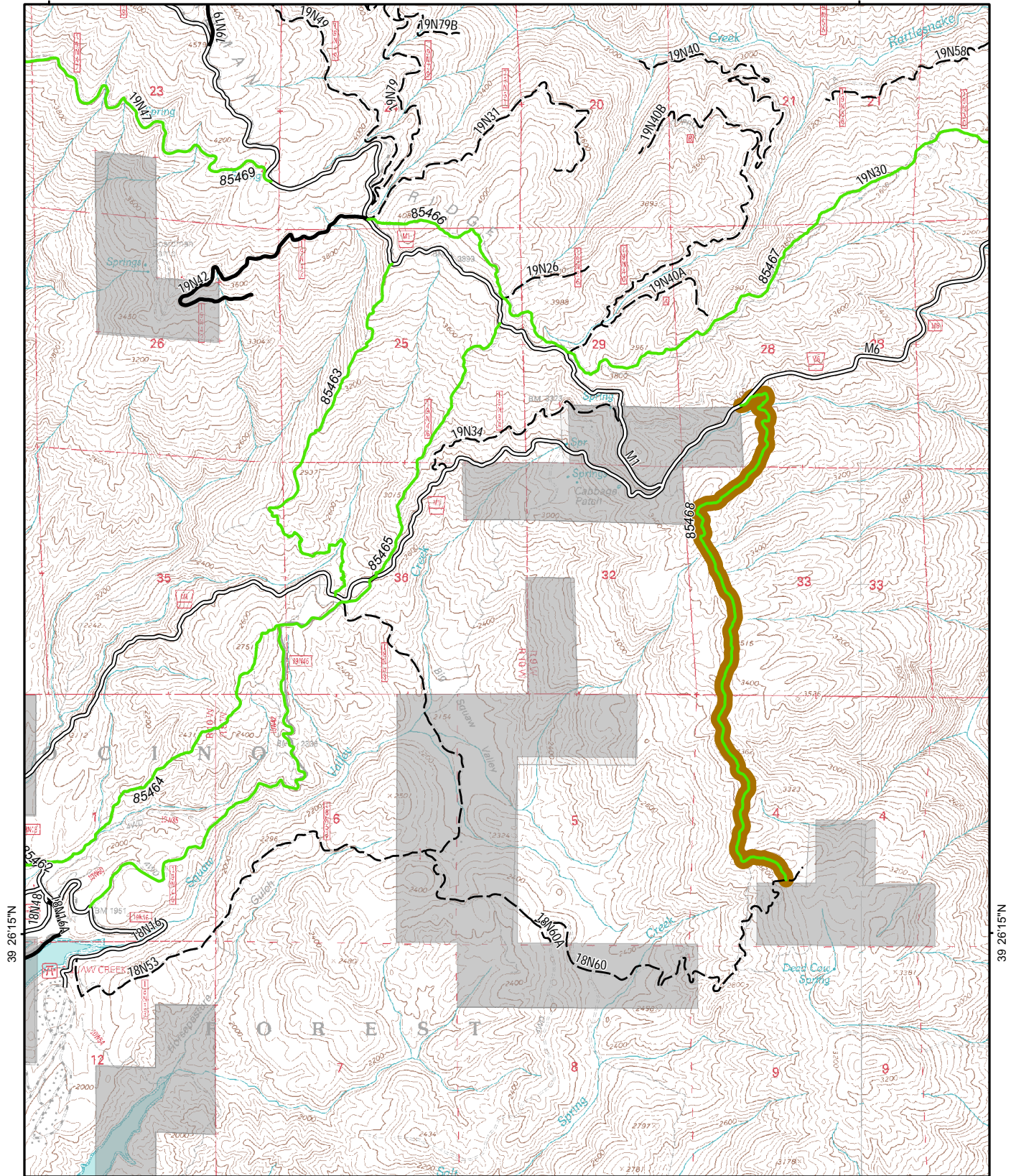


122 56'15"W

122 52'30"W



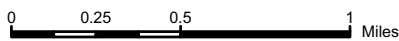
122 56'15"W

122 52'30"W

Mendocino National Forest
CLOSE OHV TRAIL 85468




July 2, 2007




 OHV Trail to Close

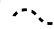
 Forest Service Motorized Trail

 County Road


 Private Ownership


**Forest Service System Road
Operational Maintenance Level**

 Unknown Maintenance Level

 Level 0 - Not Maintained

 Level 1 - Closed

 Level 2 - Open for Mixed Use

 Level 3-5 - Open to Street Legal
Vehicles and Drivers