

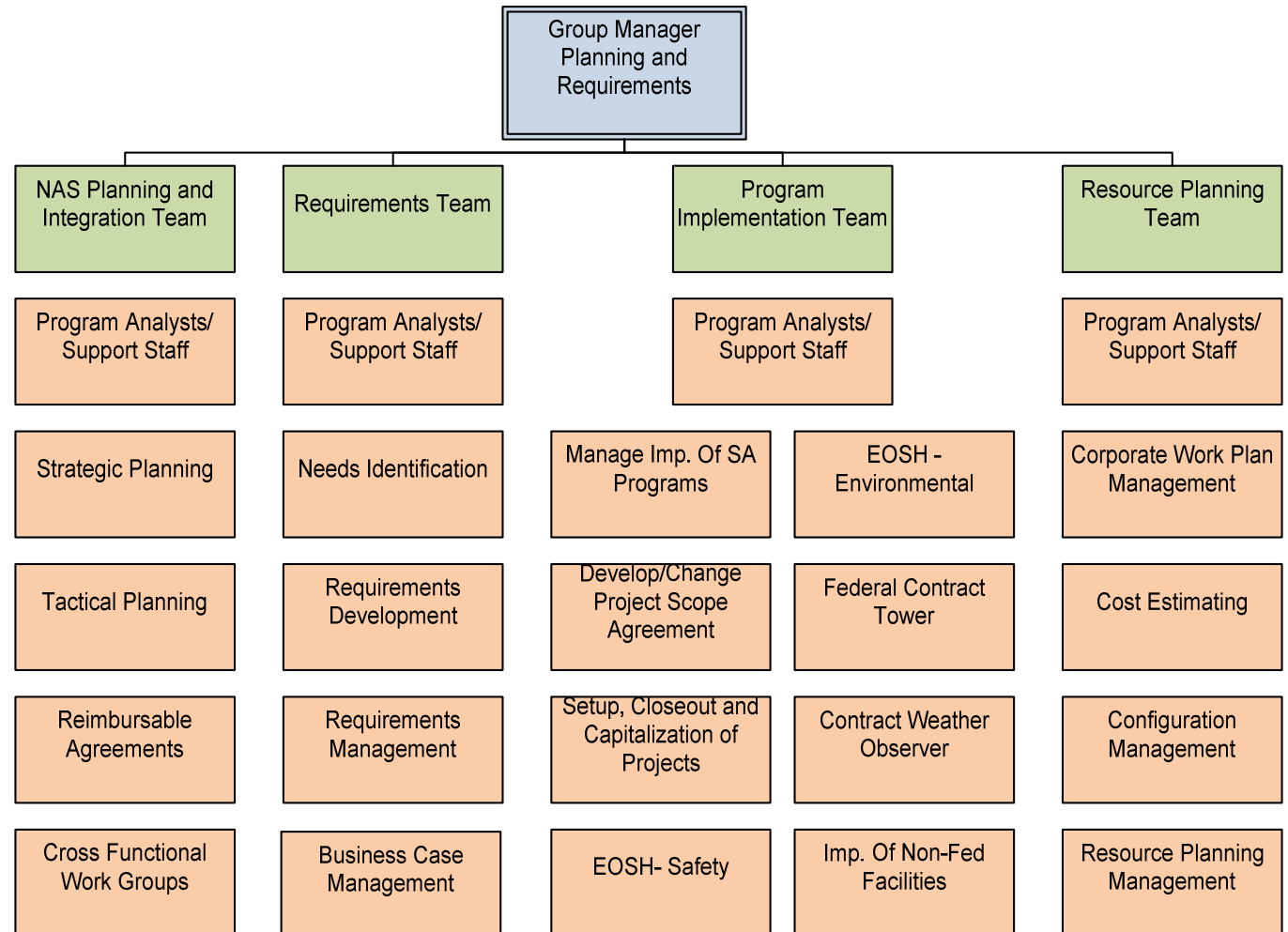
# Planning and Requirements

For more information, contact:

**FAA ATO Eastern Service Center  
Planning & Requirements Group  
(AJA-E4)**  
1701 Columbia Ave.  
College Park, GA 30337  
(404) 305-7071  
FAX (404) 305-5575

**FAA ATO Central Service Center  
Planning & Requirements Group  
(AJA-C4)**  
2601 Meacham Blvd.  
Fort Worth, TX 76137  
(817) 222-4880  
FAX (817) 222-5979

**FAA ATO Western Service Center  
Planning & Requirements Group  
(AJA-W4)**  
1601 E Valley Road  
Renton, WA 98057  
(425) 203-4600  
FAX (425) 203-4624



For detailed functional listings, please visit our  
website: <http://servicearea.ato.faa.gov>

## NAS Planning and Integration

NAS Planning and Integration is the “big picture” arm of the ATO in the Service Center. NAS Planning and Integration maintains a high level of understanding of all activities in the Service Area, internal and external to the ATO, and provides planning and integration support to help ensure that the activities occurring in the Service Area are properly aligned with the Agency’s Flight Plan, Strategic Management Process (SMP), and the Service Units’ operations/business plans.

### Requirements

The Requirements team evaluates needs submitted by the customer based on the parameters provided by the operating Service Units. The team collects, analyzes, and submits operational and technical data in support of needs validation and requirements development. The team serves as the advocate for Service Delivery Point and Service Unit requirements and funding prioritization, and develops alternatives and presents recommended solutions to the Directors of Operations. The team also compiles staff studies, business case studies, and documents to support the needs validation process.

### Program Implementation

The Program Implementation team provides management support to implement ATO services and infrastructure into facilities in the Service Area. Program Implementation Managers (PIMs) translate requirements into initial project scopes, facilitate development of the Project Scope Agreement during implementation, and are ultimately accountable for all phases of implementation including engineering, construction, installation, airspace changes, and capitalization. PIMS will issue project authorizations, task assignments and work orders to Engineering Services and others for the implementation of projects.

### Resource Planning

Resource Planning develops guidelines and procedures and ensures needed resources are identified in Operational and Capital Plans and that acquisition of resources is consistent with Agency Plans. The Resource Planning team provides Service Area oversight of Corporate Work Plan processes and databases to ensure integrity, administers the use of the Corporate Work Plan tool set and produces reports. Resource Planning also manages the Configuration Management implementation plan and needs identification. As part of the Resource Planning Team, a cost estimating function will provide expert cost estimating services in support of planning, requirements analysis, program implementation management, and project execution. These cost estimates can be provided for all phases, personnel, operation and maintenance, lifecycle costs, and will be used by the Service Area planners, specialists, engineers, and managers of all levels.

## Mission

We provide integrated planning, requirements management, and program implementation support to assist ATO Service Units, and other FAA organizations as requested, with implementing and managing ATO services and infrastructure within the Service Areas.

## Primary Services

- Strategic Planning
- Tactical Planning
- Reimbursable Agreements
- Cross Functional Work Groups Participation
- Needs Identification
- Requirements Development
- Requirements Management
- Manage Implementation of Service Area Programs
- Develop/Change Project Scope Agreements
- Setup/Closeout/Capitalization of Projects
- Environmental, Occupational Safety and Health (EOSH) – Hazard Identification and Mitigation
- Environmental, Occupational Safety and Health (EOSH) – Incident Response
- Federal Contract Towers
- Contract Weather Observation Program
- Implementation of Non-Federal Facilities
- Administer Corporate Work Plan at Service Area Level
- Initial Resource Planning
- Cost Estimating
- Administer Configuration Management Process

6/25/2008



FAA  
Air Traffic Organization

# Planning & Requirements Group

