

# Central Service Center Planning and Requirements Group

## Planning & Requirements Group

Main (817) 222-4880  
Fax (817) 222-5979  
Group Manager: Tony Roetzel  
tony.roetzel@faa.gov

## NAS Planning & Integration Team

Main (682) 647-2900  
Fax (682) 647-2946  
Team Manager: Tony Borrego  
tony.borrego@faa.gov

## NAS Planning & Integration Team

Main (682) 647-2900  
Fax (682) 647-2946  
Team Manager: Kirk Jorgensen (acting)  
kirk.jorgensen@faa.gov

## Requirements Team (Terminal)

Main (817) 222-5510  
Fax (817) 222-5979  
Team Manager: Joe Jirschele  
joe.jirschele@faa.gov

## Requirements Team (En Route)

Main (817) 222-4784  
Fax (817) 222-5979  
Team Manager: Margaret Rendon  
margaret.rendon@faa.gov

## Program Implementation Team

### Infrastructure/NAVAIDS

Main (817) 222-4885  
Fax (817) 222-5998  
Team Manager: Michelle Lott  
michelle.lott@faa.gov

## Program Implementation Team

### Enroute/Sys Ops/Comm

Main (817) 222-4885  
Fax (817) 222-4722  
Team Manager: Jeff Tague  
jeff.tague@faa.gov

## Program Implementation Team

### Terminal/Surveillance

Main (817) 222-4885  
Fax (817) 222-5998  
Team Manager: Mark Stack  
mark.stack@faa.gov

## Business Case Sustainment Team

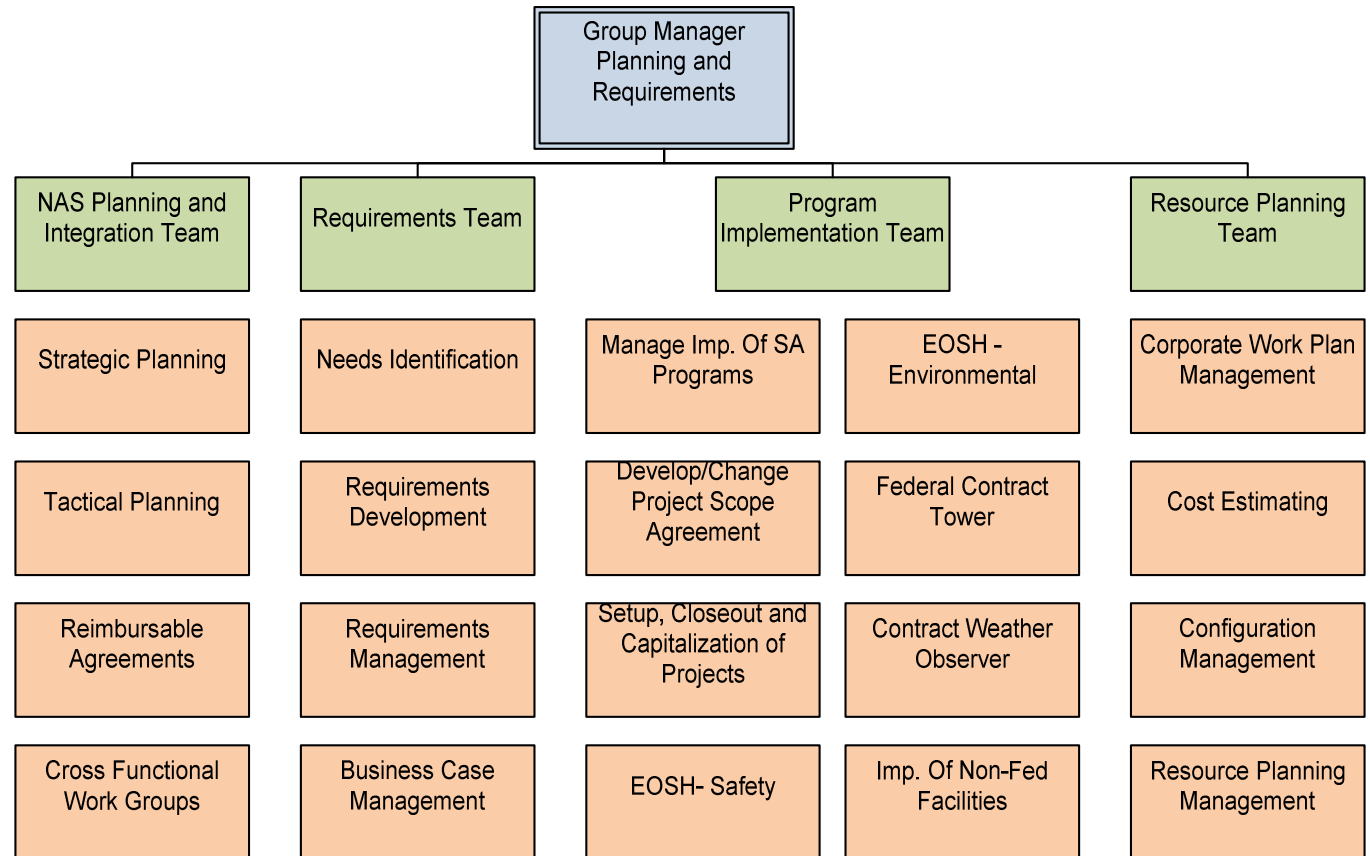
Main (817) 222-5510  
Fax (817) 222-5979  
Team Manager: Noel Cavazos  
noel.cavazos@faa.gov

## Cost Estimating Team

Main (682) 647-2930  
Fax (682) 647-2947  
Team Manager: David Wenglikowski  
david.wenglikowski@faa.gov

## Resource Planning Team

Main (817) 222-5512  
Fax (817) 222-5979  
Team Manager: Miguel Granados  
miguel.granados@faa.gov



For detailed functional listings, please visit our websites.

Internal: <http://servicearea.ato.faa.gov>

External: [http://www.faa.gov/about/office\\_org/headquarters\\_offices/ato/service\\_units/acquisition/sc/](http://www.faa.gov/about/office_org/headquarters_offices/ato/service_units/acquisition/sc/)

## NAS Planning and Integration

NAS Planning and Integration is the “big picture” arm of the ATO in the Service Center. NAS Planning and Integration maintains a high level of understanding of all activities in the Service Area, internal and external to the ATO, and provides planning and integration support to help ensure that the activities occurring in the Service Area are properly aligned with the Agency’s Flight Plan, Strategic Management Process (SMP), and the Service Units’ operations/business plans.

### Requirements

The Requirements team evaluates needs submitted by the customer based on the parameters provided by the operating Service Units. The team collects, analyzes, and submits operational and technical data in support of needs validation and requirements development. The team serves as the advocate for Service Delivery Point and Service Unit requirements and funding prioritization, and develops alternatives and presents recommended solutions to the Directors of Operations. The team also compiles staff studies, business case studies, and documents to support the needs validation process.

### Program Implementation

The Program Implementation team provides management support to implement ATO services and infrastructure into facilities in the Service Area. Program Implementation Managers (PIMs) translate requirements into initial project scopes, facilitate development of the Project Scope Agreement during implementation, and are ultimately accountable for all phases of implementation including engineering, construction, installation, airspace changes, and capitalization. PIMS will issue project authorizations, task assignments and work orders to Engineering Services and others for the implementation of projects.

### Resource Planning

Resource Planning develops guidelines and procedures and ensures needed resources are identified in Operational and Capital Plans and that acquisition of resources is consistent with Agency Plans. The Resource Planning team provides Service Area oversight of Corporate Work Plan processes and databases to ensure integrity, administers the use of the Corporate Work Plan tool set and produces reports. Resource Planning also manages the Configuration Management implementation plan and needs identification. As part of the Resource Planning Team, a cost estimating function will provide expert cost estimating services in support of planning, requirements analysis, program implementation management, and project execution. These cost estimates can be provided for all phases, personnel, operation and maintenance, lifecycle costs, and will be used by the Service Area planners, specialists, engineers, and managers of all levels.

## Mission

We provide integrated planning, requirements management, and program implementation management support to assist ATO Service Units, and other FAA organizations as requested, with implementing and managing ATO services and infrastructure within the Service Areas.

## Primary Services

- Strategic Planning
- Tactical Planning
- Reimbursable Agreements
- Cross Functional Work Groups Participation
- Needs Identification
- Requirements Development
- Requirements Management
- Manage Implementation of Service Area Programs
- Develop/Change Project Scope Agreements
- Setup/Closeout/Capitalization of Projects
- Environmental, Occupational Safety and Health (EOSH) – Hazard Identification and Mitigation
- Environmental, Occupational Safety and Health (EOSH) – Incident Response
- Federal Contract Towers
- Contract Weather Observation Program
- Implementation of Non-Federal Facilities
- Administer Corporate Work Plan at Service Area Level
- Initial Resource Planning
- Cost Estimating
- Administer Configuration Management Process

7/1/08



FAA  
Air Traffic Organization

## Central Service Center

## Planning & Requirements Group

