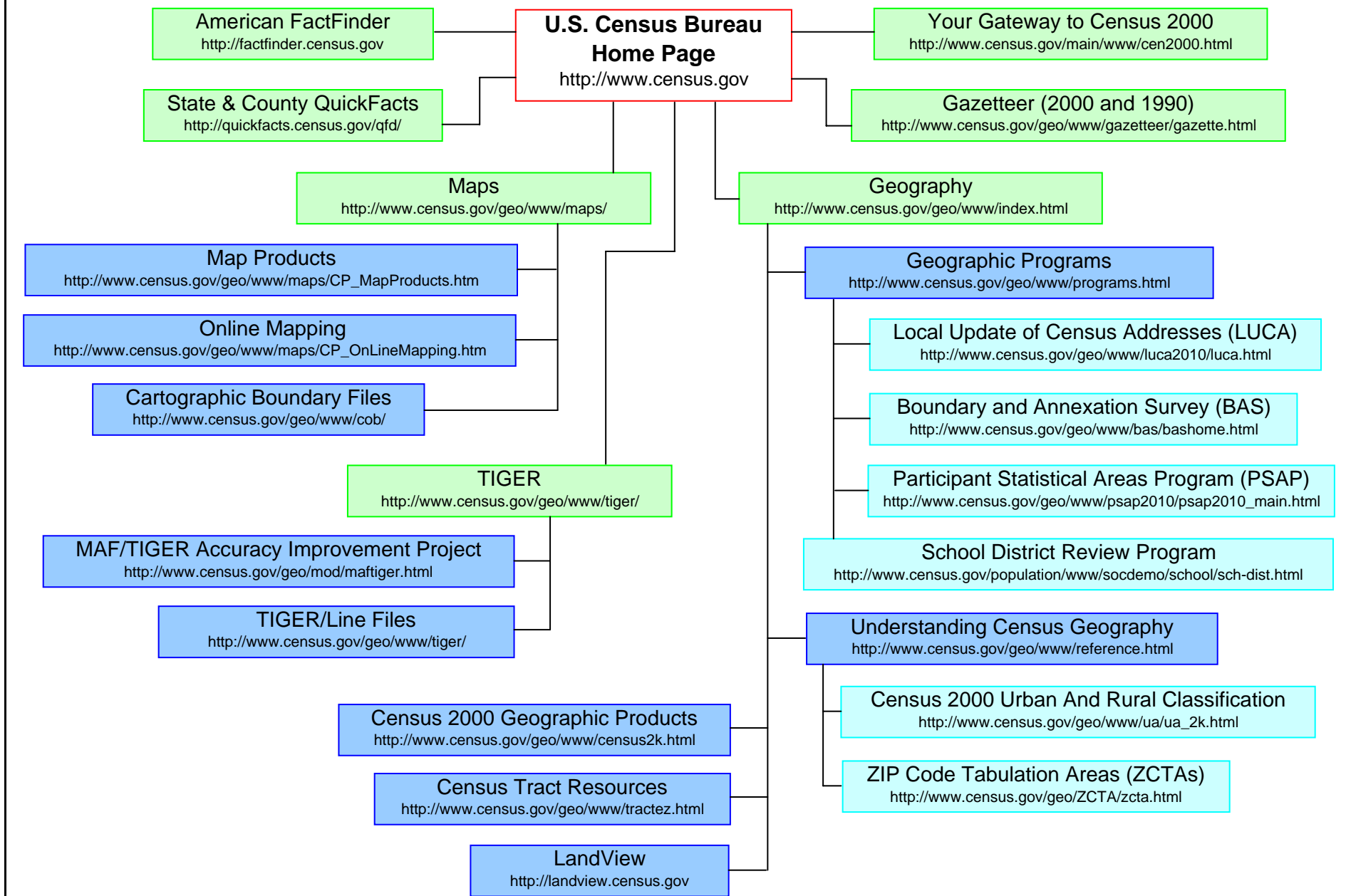


Online Cartographic & Geographic Resources



U.S. CENSUS BUREAU

Online Cartographic & Geographic Resources

The Census Bureau's Web site has numerous pages of statistics and technical information on various economic and population topics. The following brief descriptions of online geographic and cartographic resources correspond to the URL Web chart on the opposite side of this paper.

American FactFinder: American FactFinder is a data access and dissemination system that will find and retrieve geographic information and plot the information on a map.

State & County QuickFacts: Quick, easy access to facts about people, business, and geography.

Your Gateway to Census 2000: Census 2000 vintage decennial data depot. Provides links to all Census 2000 data, reports, briefs, demographic profiles, and geography.

Gazetteer: Census 2000 place, county, county subdivision and ZCTA™ files; 1990 place name search engine; 1990 place, county, and county subdivision files.

Maps: This site provides access to Census Bureau maps, online mapping engines and cartographic resources.

Map Products: Links to publicly available printed maps and free, downloadable maps in PDF format.

Online Mapping: Links to two mapping applications derived from Census Bureau map data.

Cartographic Boundary Files: Generalized, digital files suitable for use with GIS in small-scale thematic mapping.

Geography: This site provides access to all geography related information, Geographic Programs, Glossaries, Maps, Relationship Files, and the TIGER page.

Local Update of Census Addresses (LUCA): A partnership program allowing the Census Bureau to benefit from local knowledge in developing its Master Address File (MAF).

Boundary and Annexation Survey (BAS): The BAS is used to update information about the legal boundaries and names of all governmental units in the United States.

Participant Statistical Areas Program (PSAP): Information about local review and update of census block groups, census tracts, census county divisions (CCDs), and census designated places (CDPs).

Census Tract Resources: List of resources for locating census tracts and address coding to census tracts.

School District Review Program: This site provides School District Review Program information and materials.

LandView: A basic geographic viewer that maps Census TIGER and demographic data as well as selected EPA and USGS data.

Census 2000 Urban and Rural Classification: This site provides information about the Census Bureau's urban and rural classification and criteria.

ZIP Code Tabulation Areas (ZCTAs™): Approximate area representations of U.S. Postal Service (USPS) ZIP Code service areas created by the Census Bureau to meet requests by data users for statistical data by ZIP Code area. ZCTAs are based on the census blocks.

TIGER: TIGER®, TIGER/Line®, TIGER-Related Products and Frequently Asked Questions.

MAF/TIGER Accuracy Improvement Project: This site provides information about the Census Bureau's MAF/TIGER Accuracy Improvement Project.

TIGER/Line files: Spatial data files extracted from the Census Bureau's TIGER database.