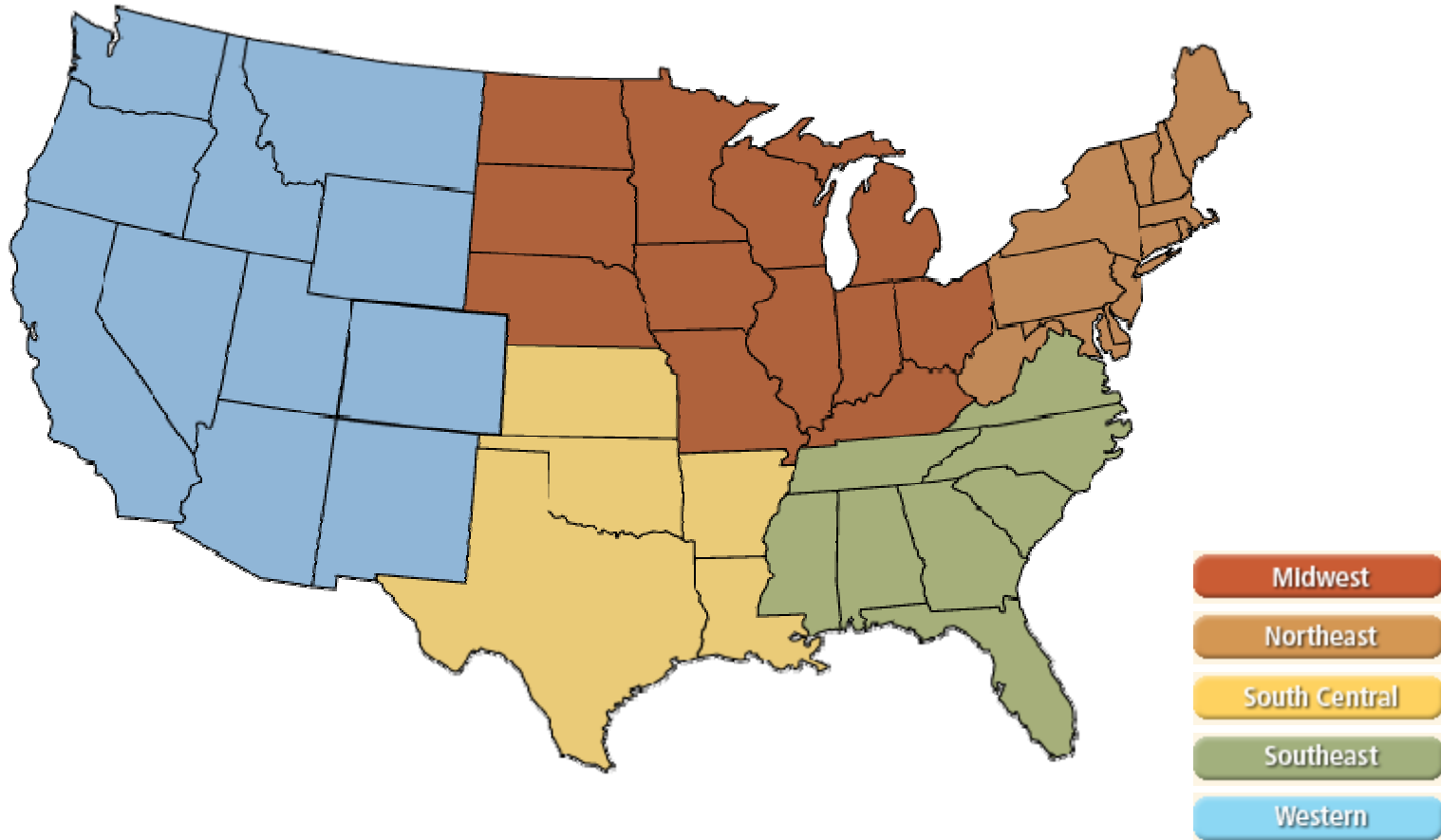
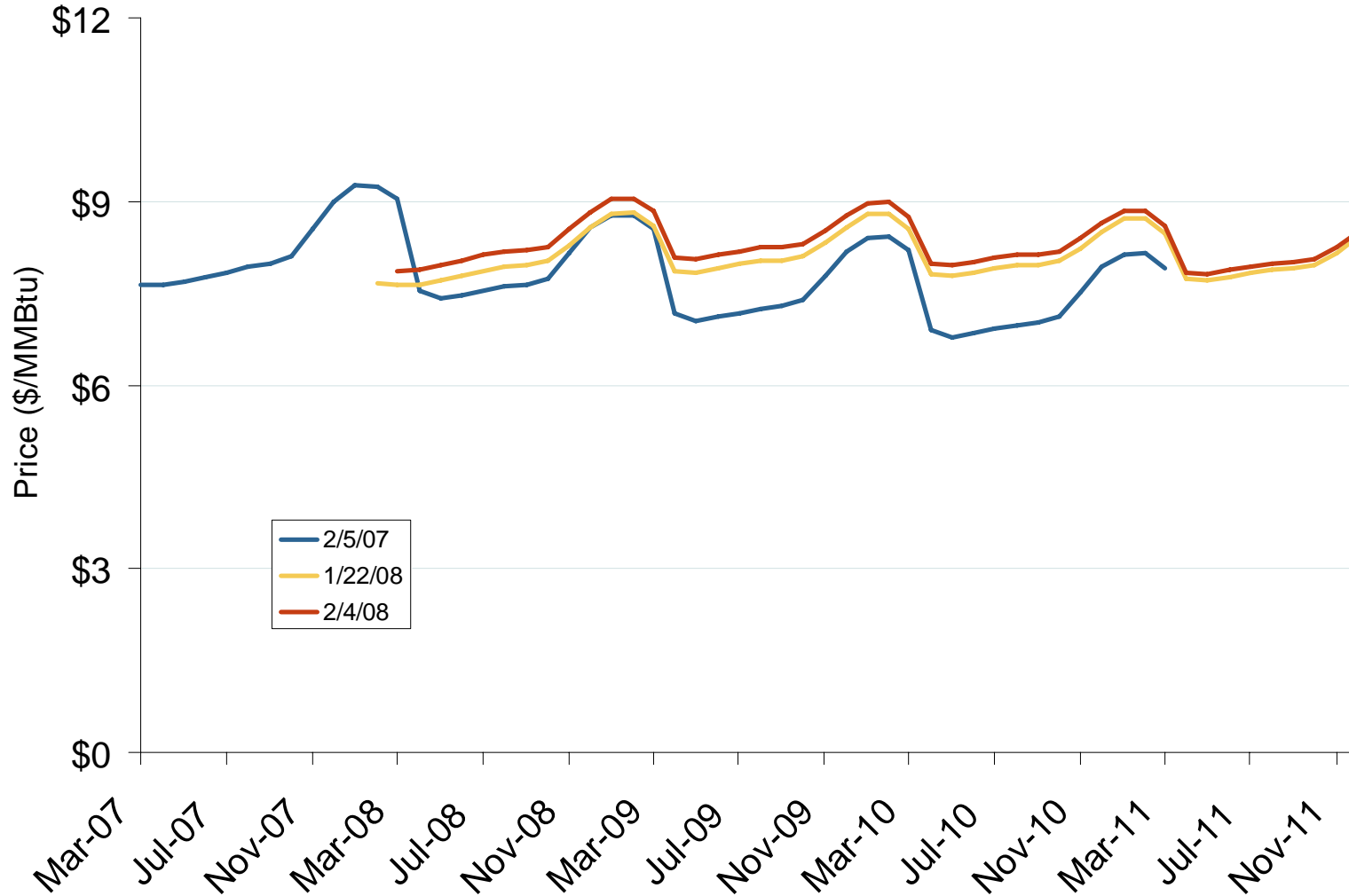


Natural Gas Futures Trading Markets



NYMEX Natural Gas Forward Price Curve

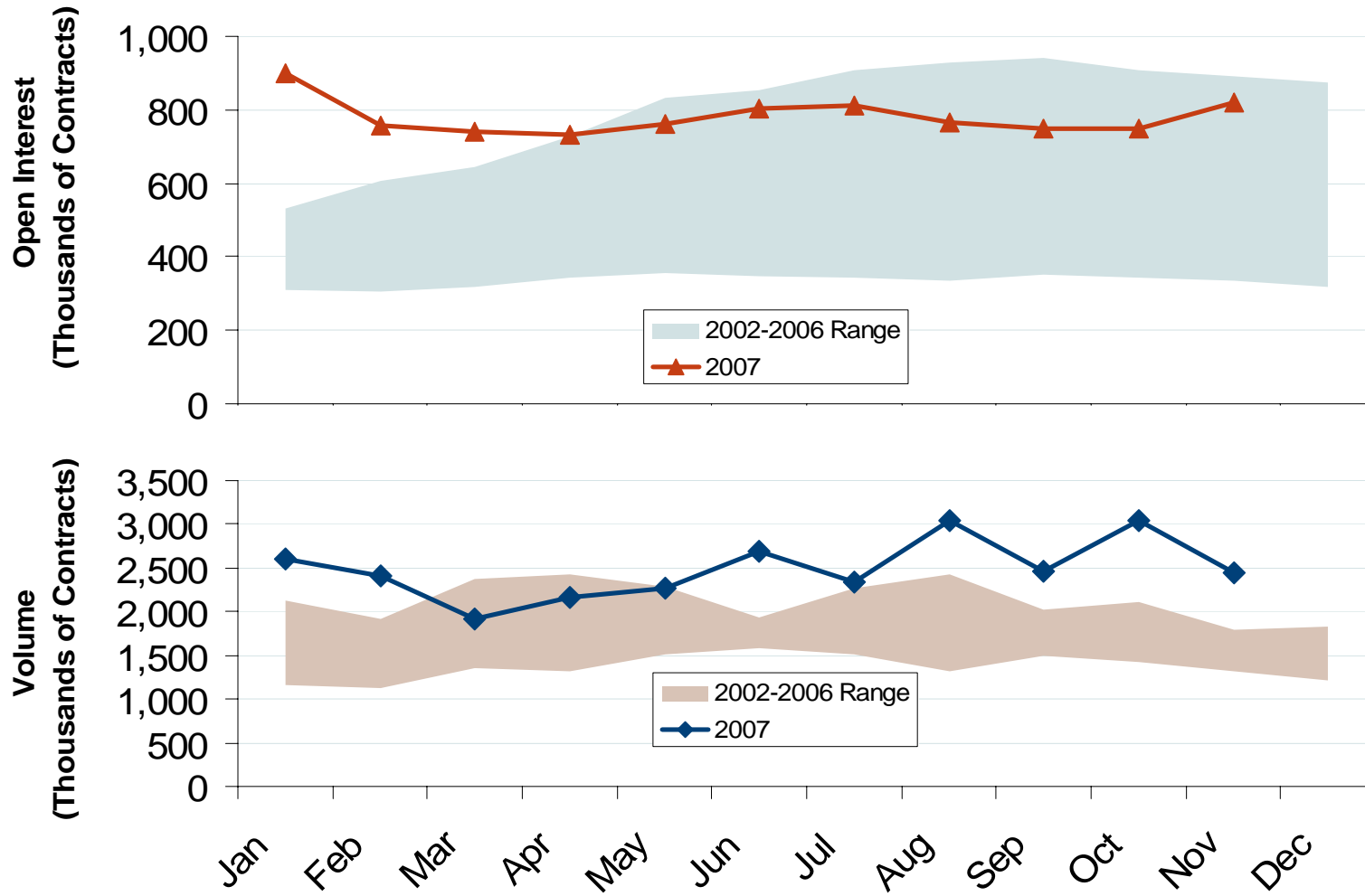


Source: Derived from NYMEX data.

Updated February 8, 2008

2009

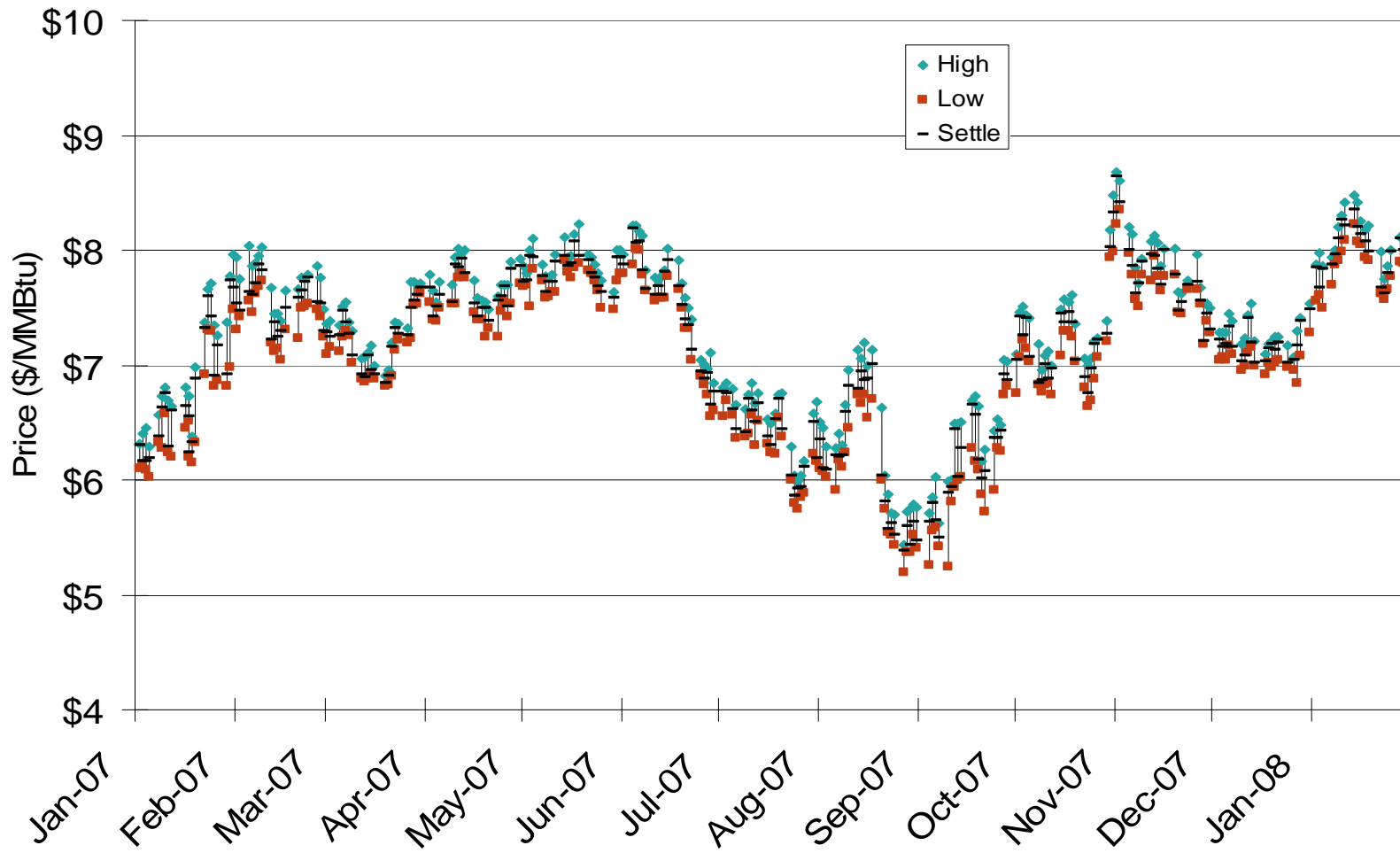
NYMEX Natural Gas Futures Month-End Open Interest and Total Monthly Volume



Source: Derived from NYMEX data.

Updated December 7, 2007
2010

NYMEX Natural Gas Futures Prompt Month Daily Settlement Price and Price Range

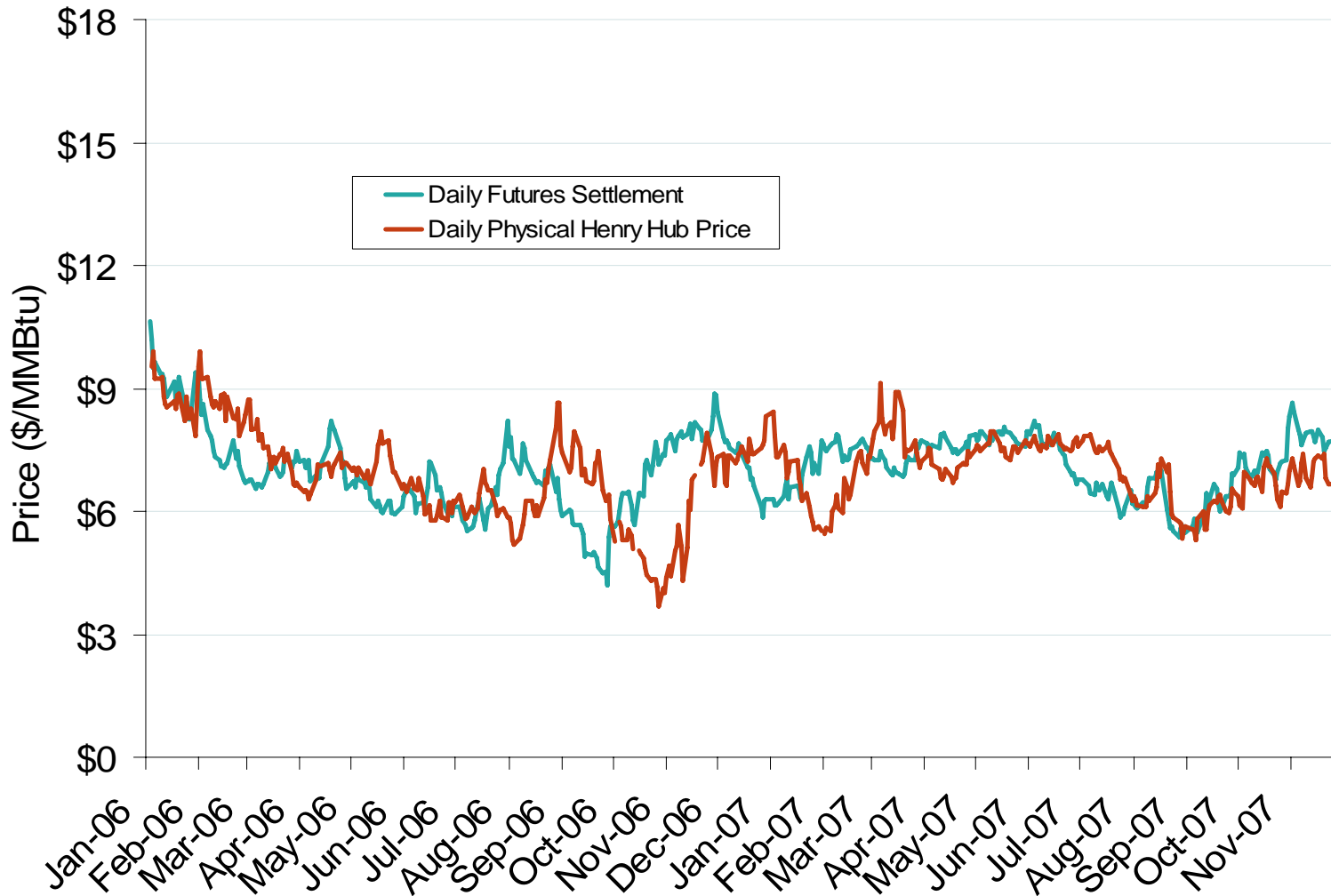


Source: Derived from NYMEX data.

Updated February 8, 2008

2086

Daily Physical Index Price and Daily Futures Settlement Price

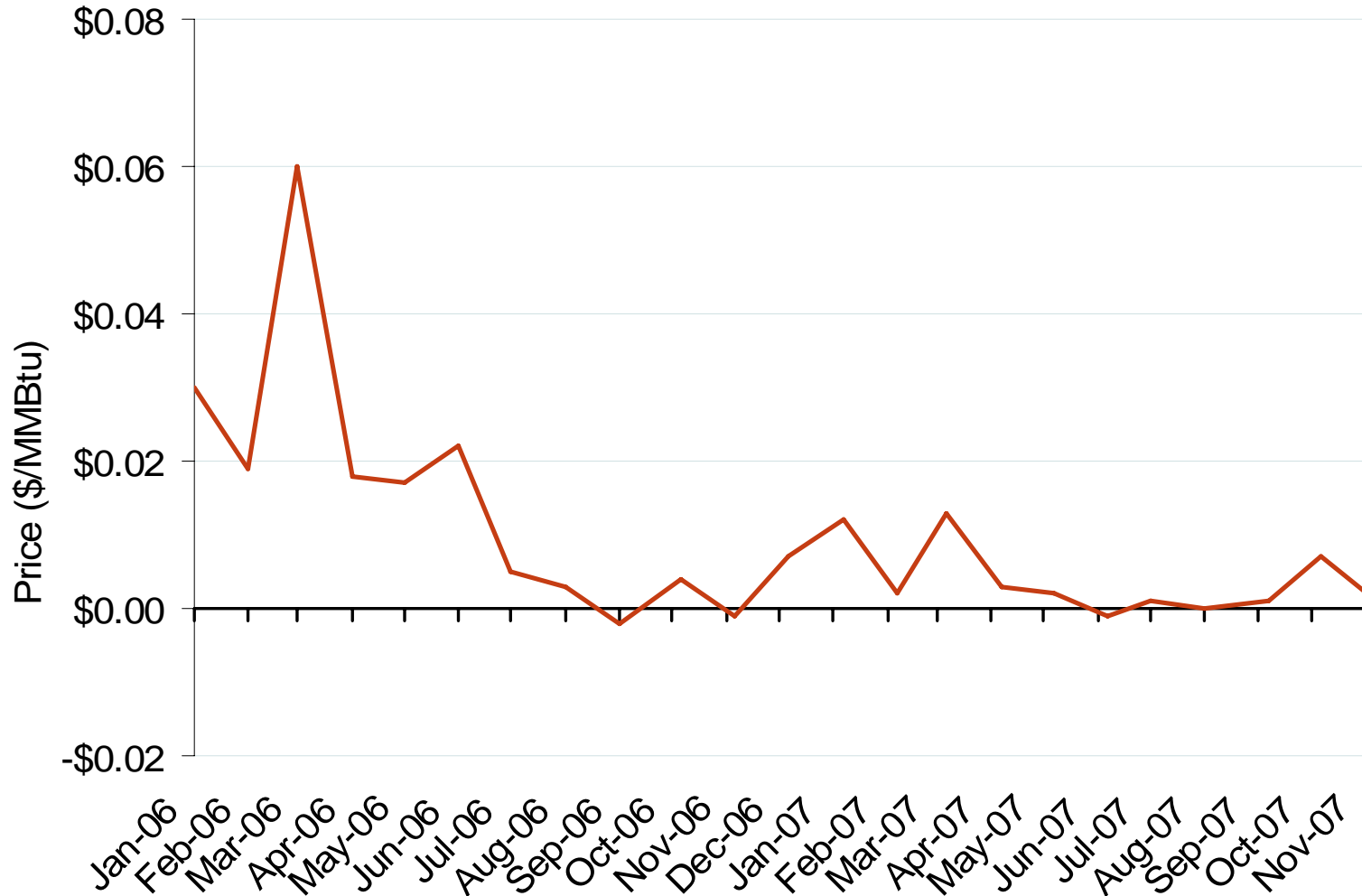


Source: Derived from *Platts* and *Bloomberg* data.

Updated December 7, 2007

2087

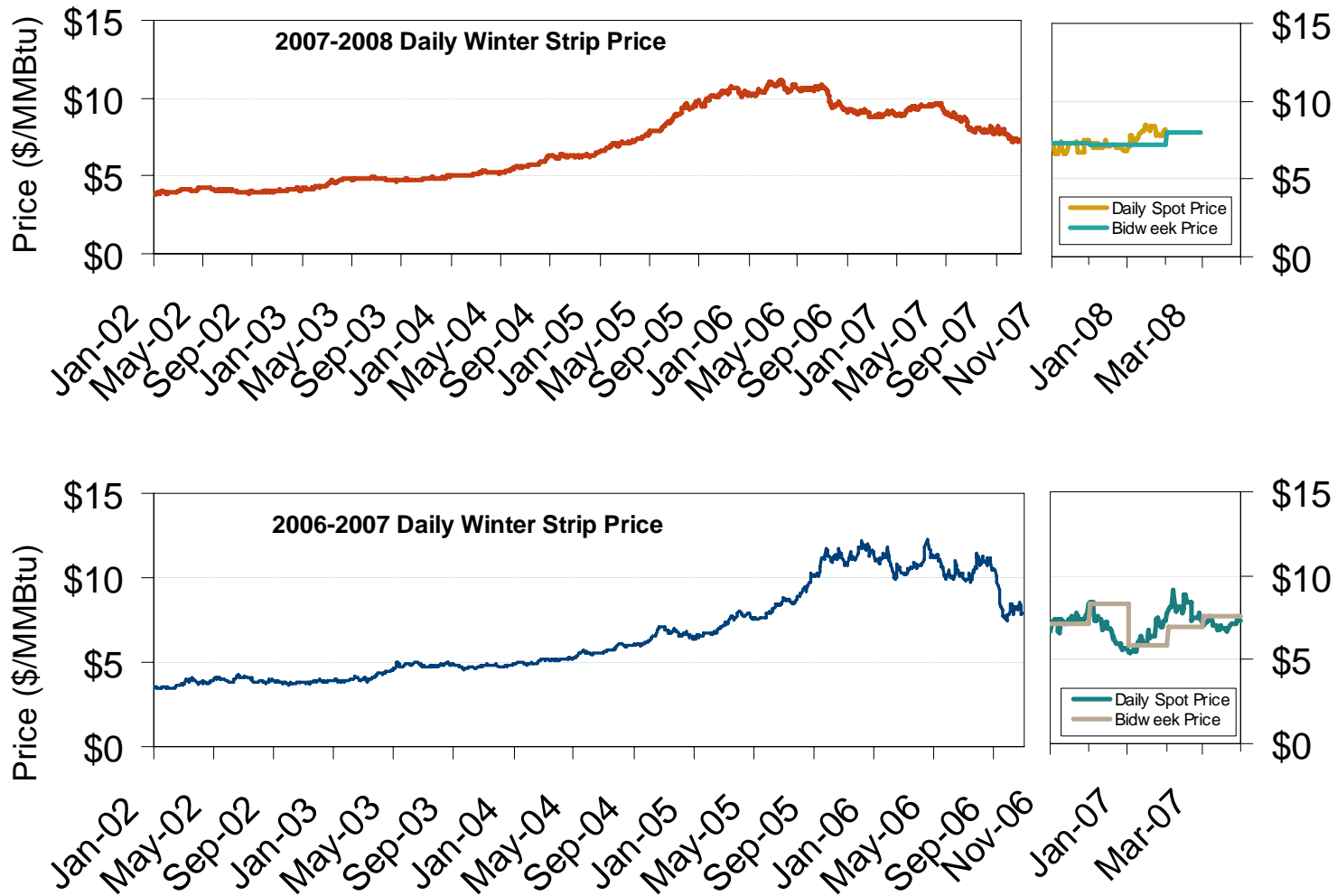
Deviation Between Monthly Physical Index and Monthly Futures Expiration Price at Henry Hub



Source: Derived from *Platts* and *Bloomberg* data.

Updated December 7, 2007 2088

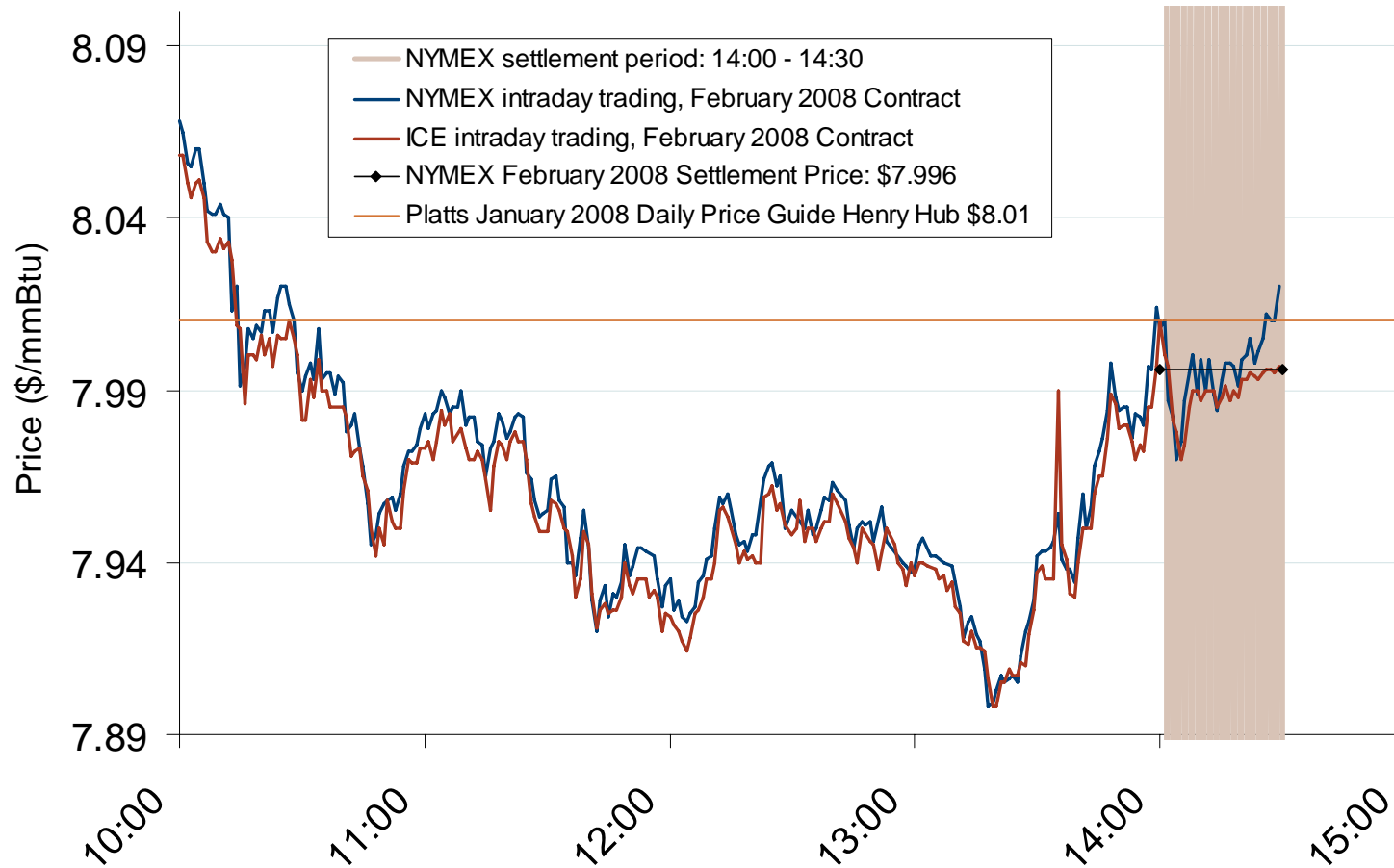
Natural Gas Winter Futures Strip and Daily Henry Hub Spot and Bidweek Prices



Source: Derived from Platts and Nymex data.

Updated February 8, 2008

February 2008 NYMEX and ICE Contract Final Settlement Day



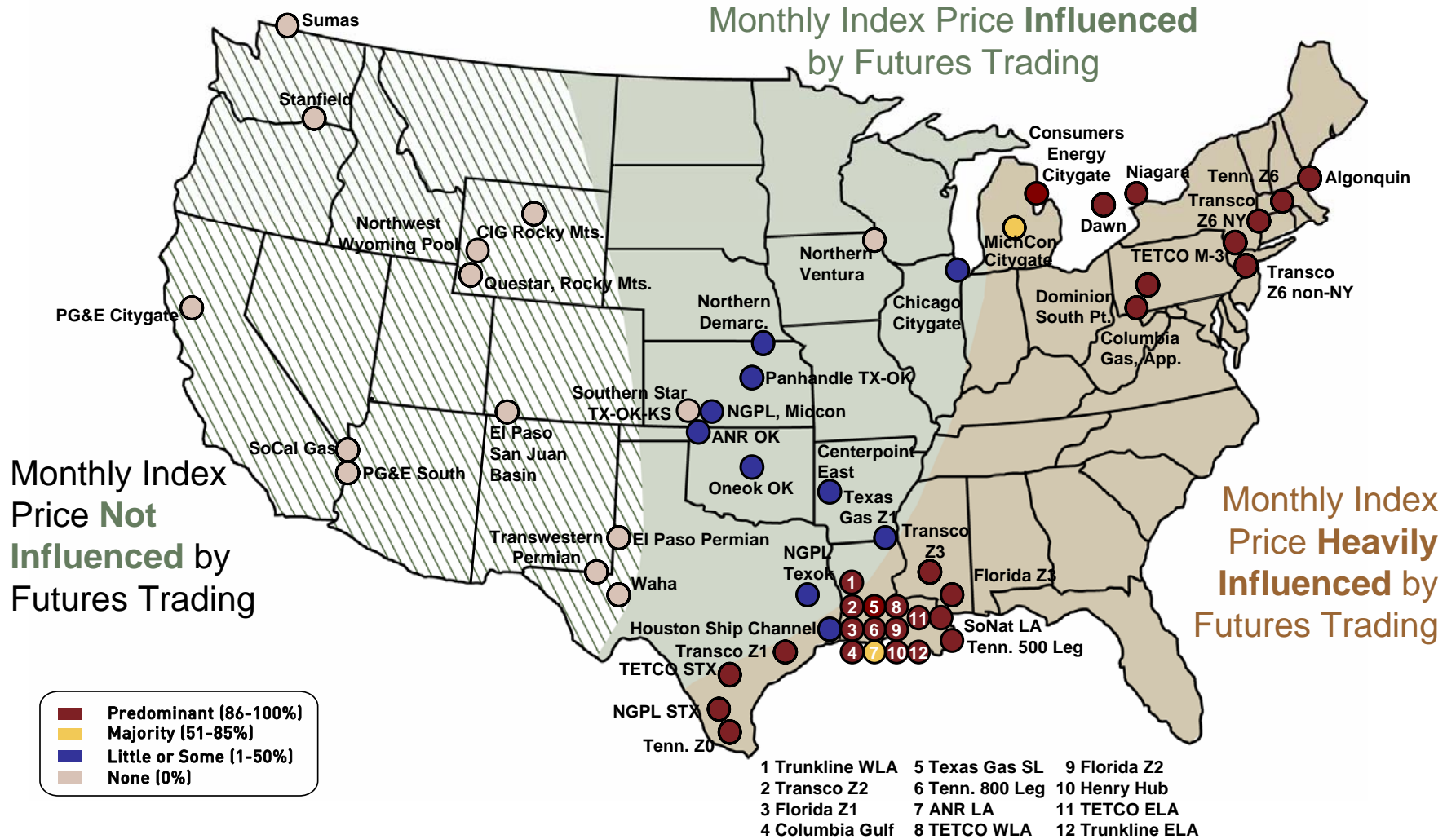
January 29, 2008 Trade Time

See 2003-2007 historical monthly final settlement day charts.

Source: Derived from Nymex and ICE data.

Updated February 4, 2008

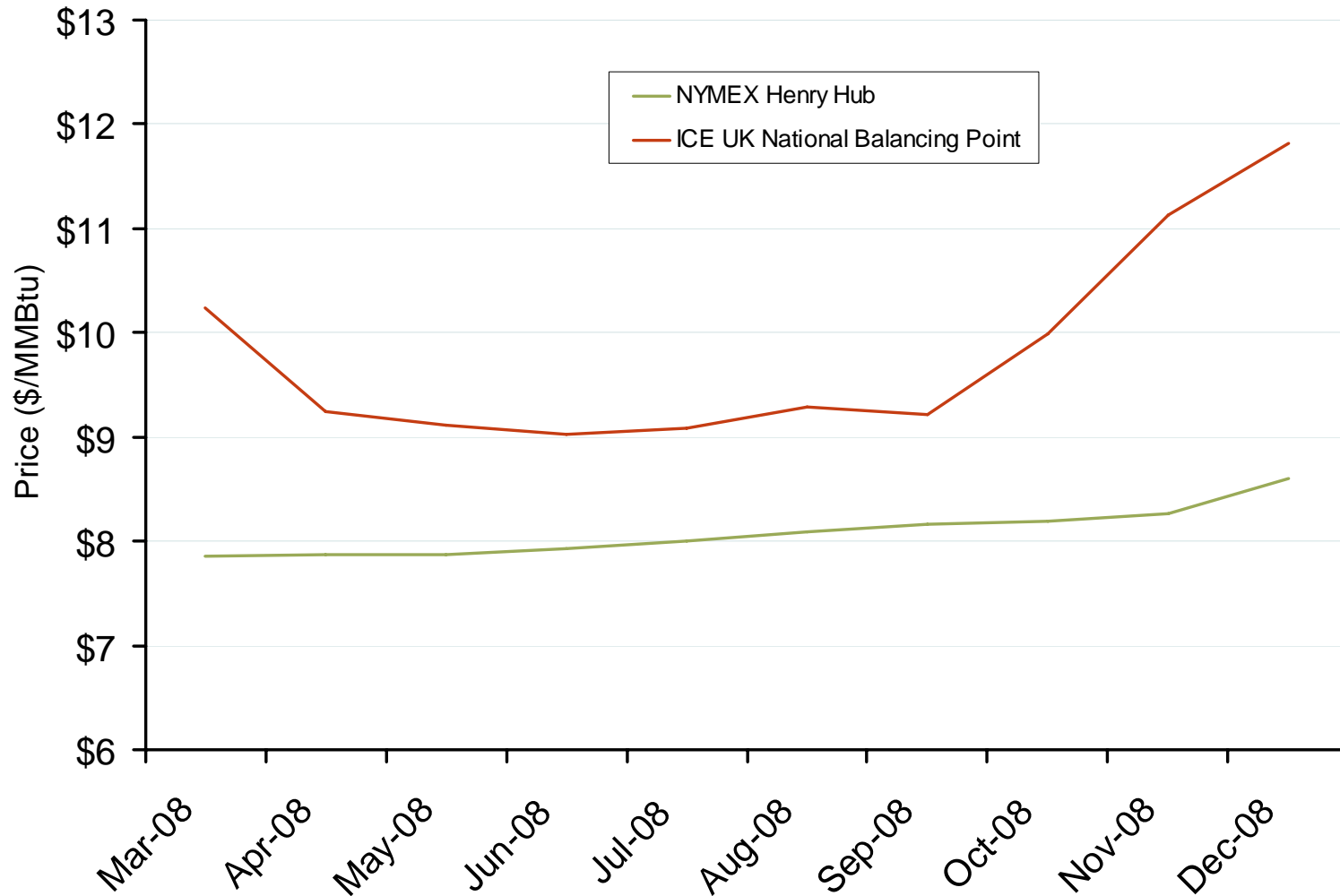
Use of Physical Basis in Natural Gas Price Indices at Major Trading Points, 2007



Source: Derived from *Platts* data for January through October 2007 indices.

Updated October 11, 2007

NYMEX Henry Hub and ICE UK National Balancing Point Natural Gas Forward Price Curves



Source: Derived from NYMEX and ICE data.

Updated February 8, 2008

2170