

Connecting to the HRSA Geospatial Data Warehouse (HGDW) Feature Service

<http://datawarehouse.hrsa.gov>

This document describes the steps necessary to use the free Java-based ArcExplorer tool from ESRI to connect to and use the HRSA Geospatial Data Warehouse feature data service (HGDW_Mapping) located at <http://datawarehouse.hrsa.gov>. (You can download and install the software from the ESRI website by visiting <http://www.esri.com/software/arcexplorer/about/arcexplorer9.html>.) Once you have obtained and installed the software, follow these steps to connect to and use the HRSA Geospatial Data Warehouse data.


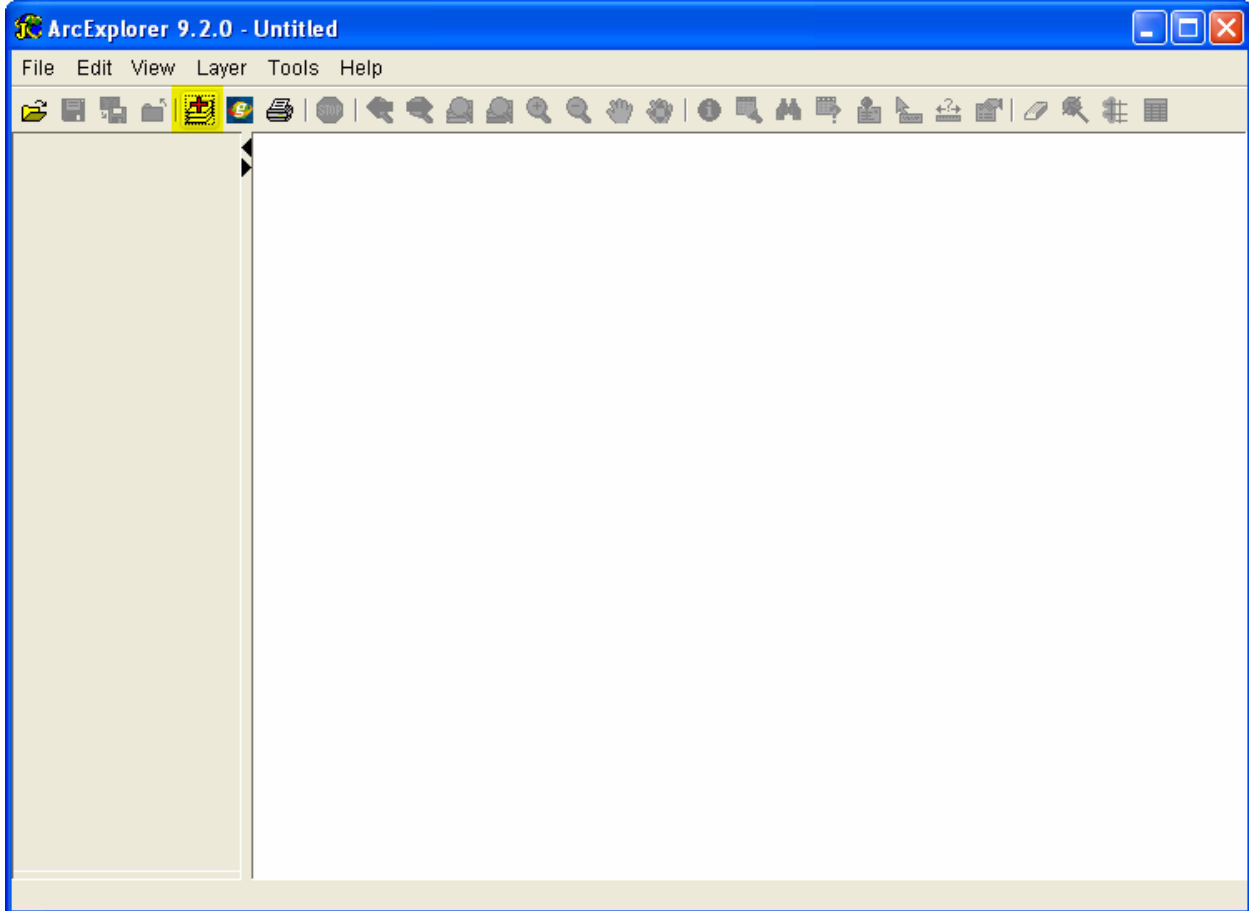
Step 1: Open ArcExplorer. Then click the “Add Data” button () on the tool bar to open the Catalog tool.

Figure 1: The ArcExplorer map interface



Connecting to the HRSA Geospatial Data Warehouse (HGDW) Feature Service

<http://datawarehouse.hrsa.gov>

Step 2: Click the plus sign next to the “WWW” entry under Data Sources to reveal the “Add Web Site” option.

Figure 2: The ArcExplorer Catalog tool

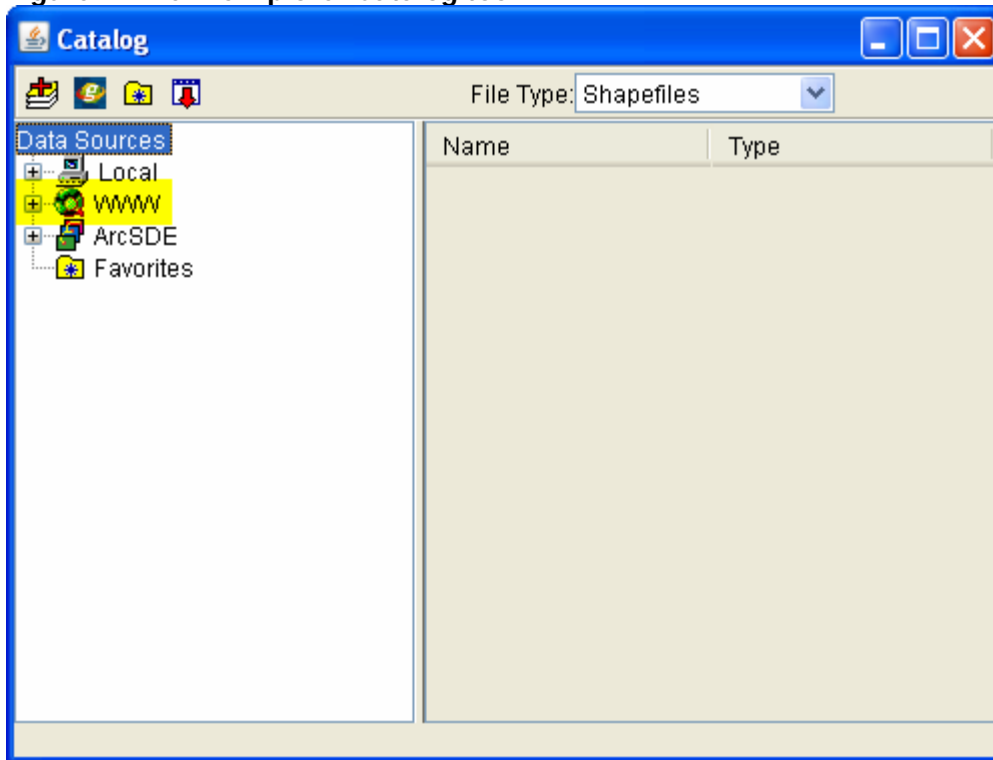
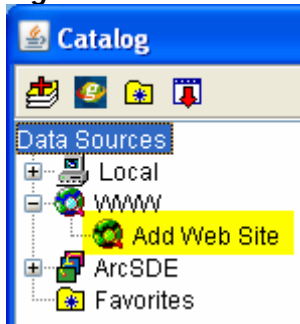


Figure 3: The Add Web Site option

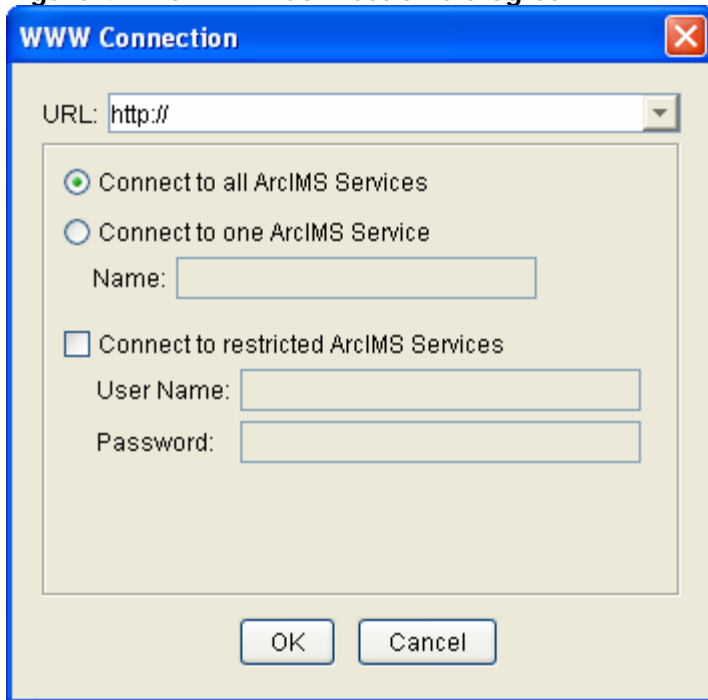


Connecting to the HRSA Geospatial Data Warehouse (HGDW) Feature Service

<http://datawarehouse.hrsa.gov>

Step 3: Double-click the “Add Web Site” option to open the WWW Connection dialog box:

Figure 4: The WWW Connection dialog box

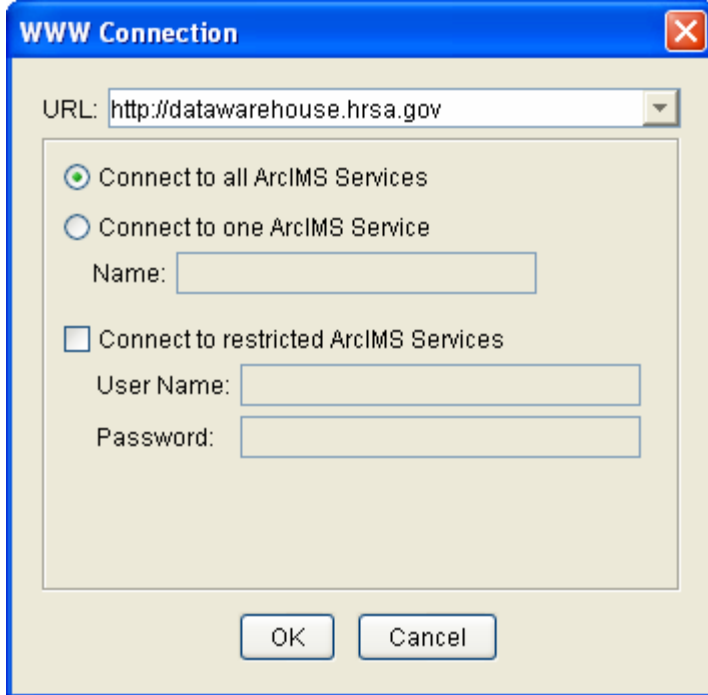


Connecting to the HRSA Geospatial Data Warehouse (HGDW) Feature Service

<http://datawarehouse.hrsa.gov>

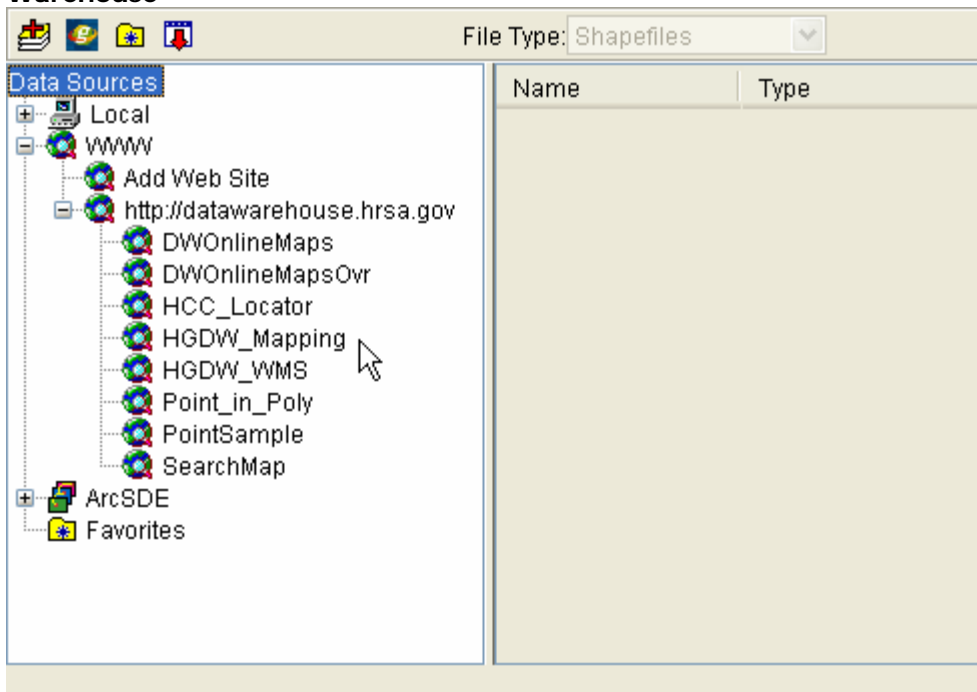
Enter the web address of the HRSA Geospatial Data Warehouse (<http://datawarehouse.hrsa.gov>) and click the OK button. Leave the default option “Connect to all ArcIMS Services” selected.

Figure 5: WWW Connection information for the HRSA Geospatial Data Warehouse



Step 4: After you click OK, the Catalog tool displays a list of all of the map services in the HGDW website.

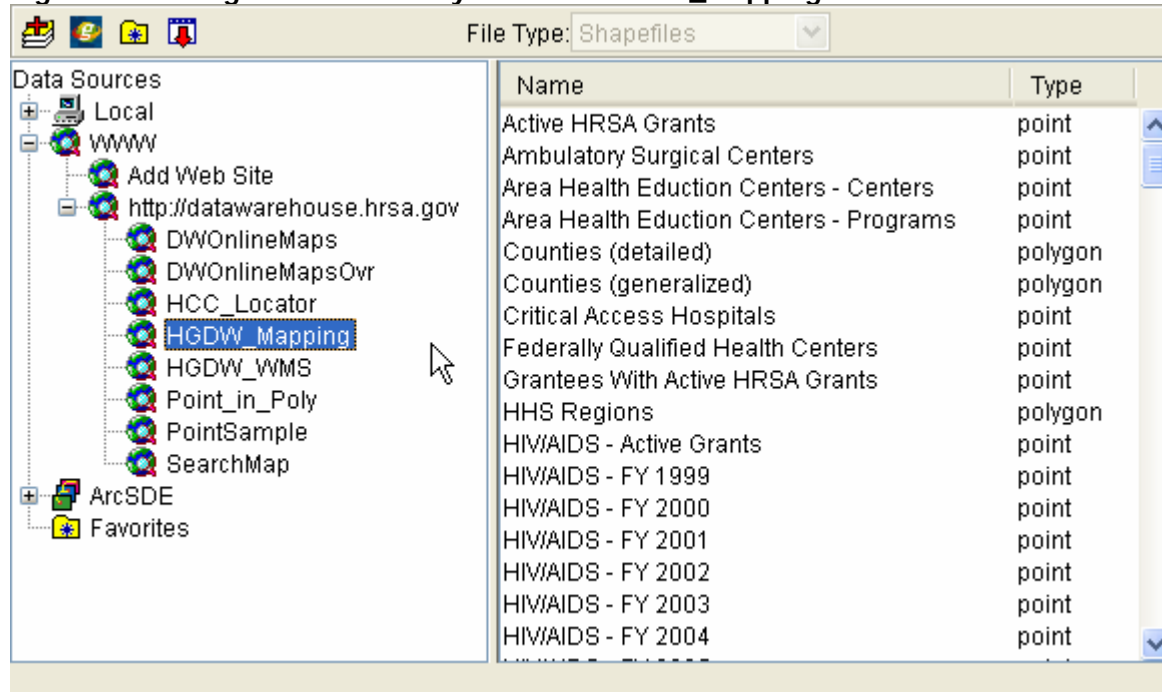
Figure 6: The Catalog Tool, showing the map services in the HRSA Geospatial Data Warehouse



<http://datawarehouse.hrsa.gov>

Step 5: Select the service named “HGDW_Mapping”. The Catalog tool will list all of the layers available in the HGDW_Mapping map service.

Figure 7: Catalog tool with the layers of the HGDW_Mapping service shown

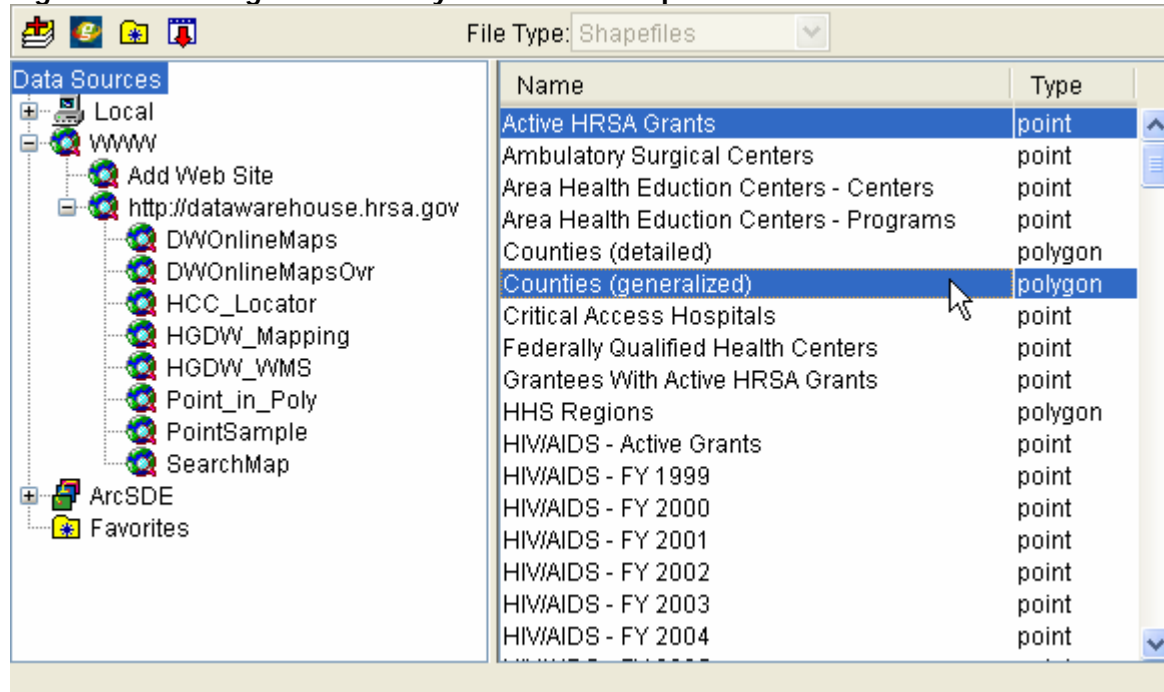



Connecting to the HRSA Geospatial Data Warehouse (HGDW) Feature Service


<http://datawarehouse.hrsa.gov>

Step 6: From the list of layers in the right hand pane of the Catalog window, select the map layer(s) you want to use. In the example shown here, the “Active HRSA Grants” and “Counties (Generalized)” layers are selected.

Figure 8: Selecting individual layers from the map service



Step 7: When you are done selecting layers, Click the “Add Data” button () on the Catalog tool bar to add the selected layer(s) to your ArcExplorer map. If you are finished working with Catalog, you can

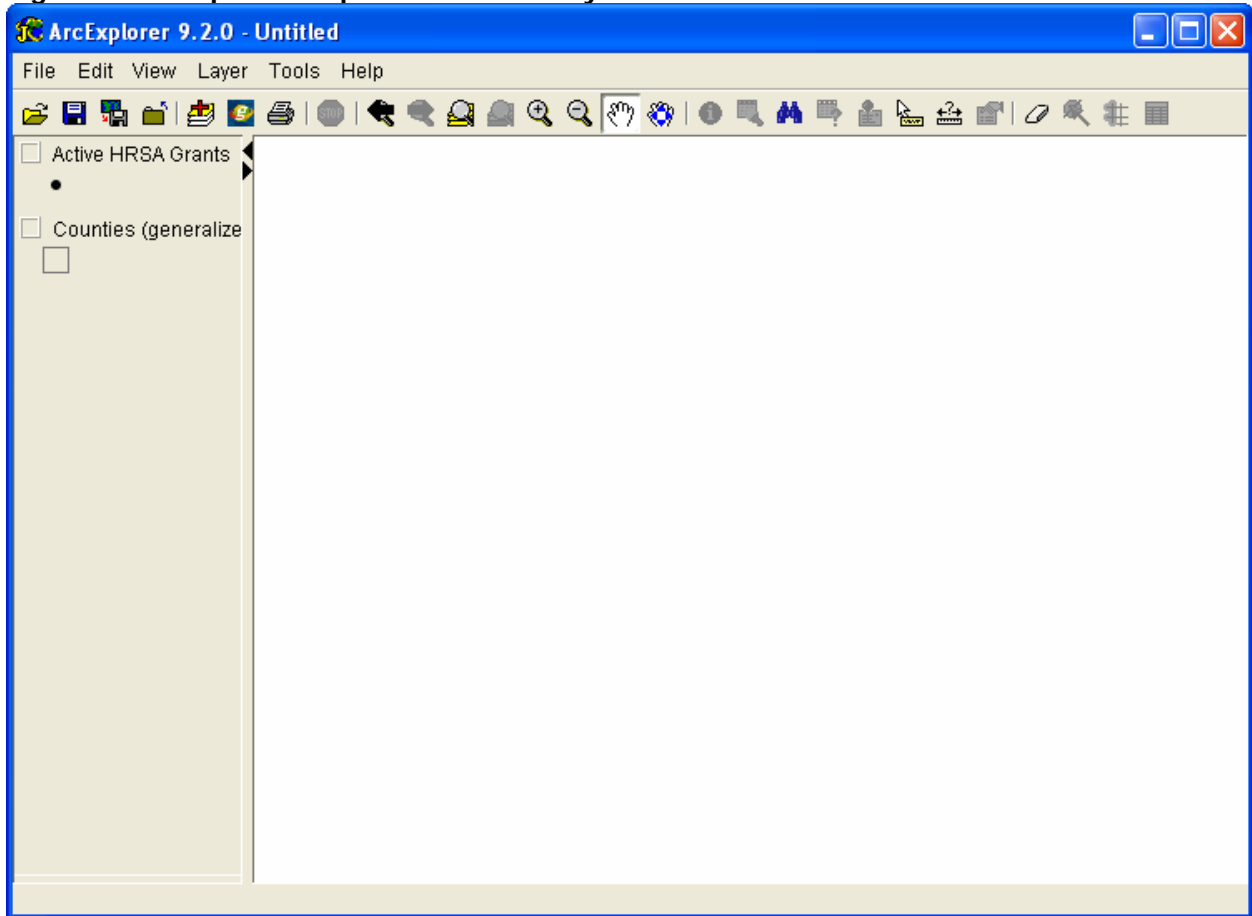
close the tool using the “Close” button () on the toolbar. Otherwise, you can click the main ArcExplorer map window to activate it and start working with your map.

Connecting to the HRSA Geospatial Data Warehouse (HGDW) Feature Service

<http://datawarehouse.hrsa.gov>

Step 8: Once you've added some or all of the layers in the HGDW_Mapping service to your map, the Table of Contents in ArcExplorer should look similar to this:

Figure 9: ArcExplorer map interface with layers added



When you add new data, it is left “turned off” (not drawn) by default. Use the check box next to each layer’s name to cause it to be drawn or hidden.

From this point, you should be able to work with the data just as if it were data on your own system. Remember that as the data in the HGDW changes you may see different features. Each time the data in the HGDW are updated, the change is noted on the Data Refresh Dates page of the HGDW website (<http://datawarehouse.hrsa.gov/RefreshDates.aspx>).