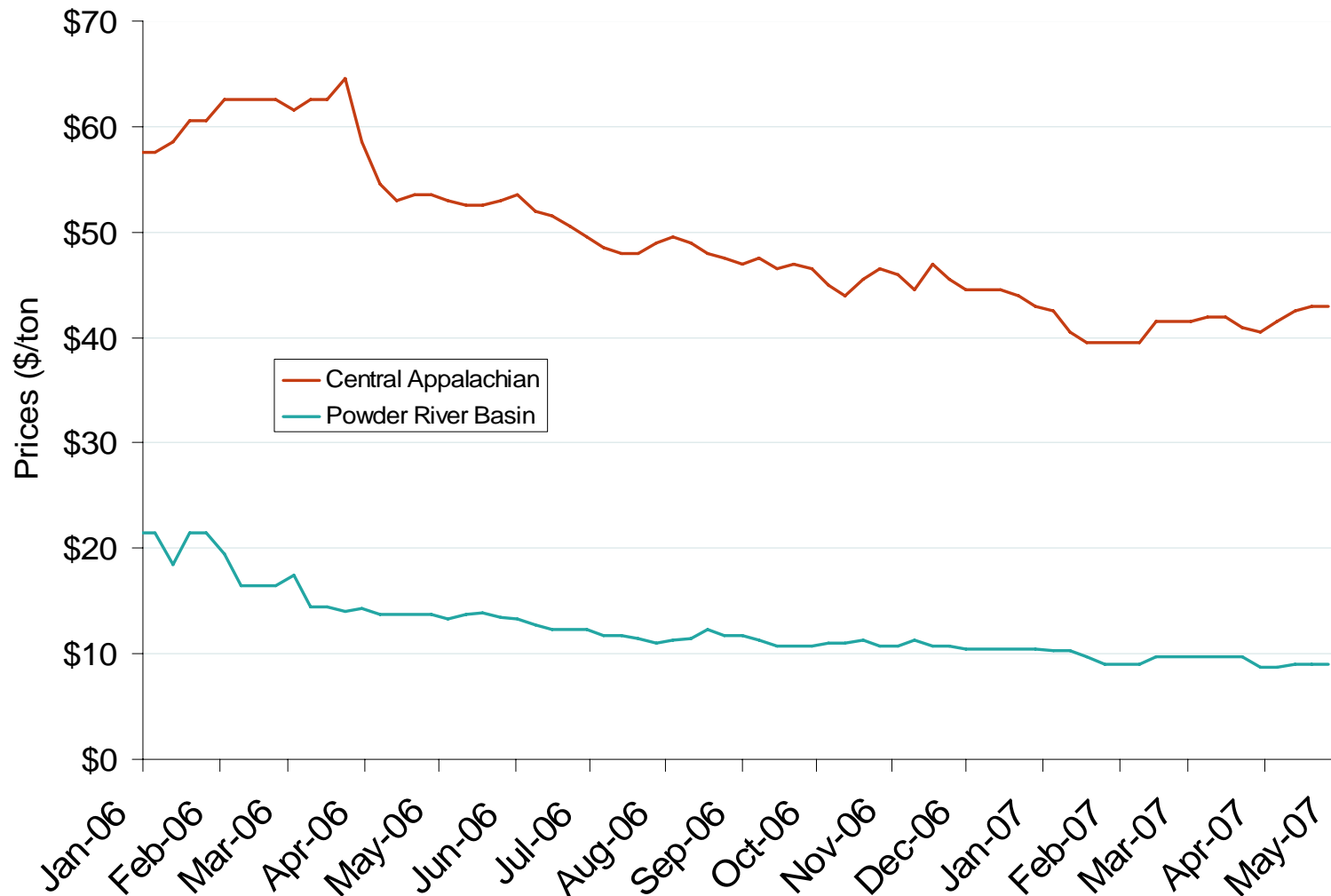


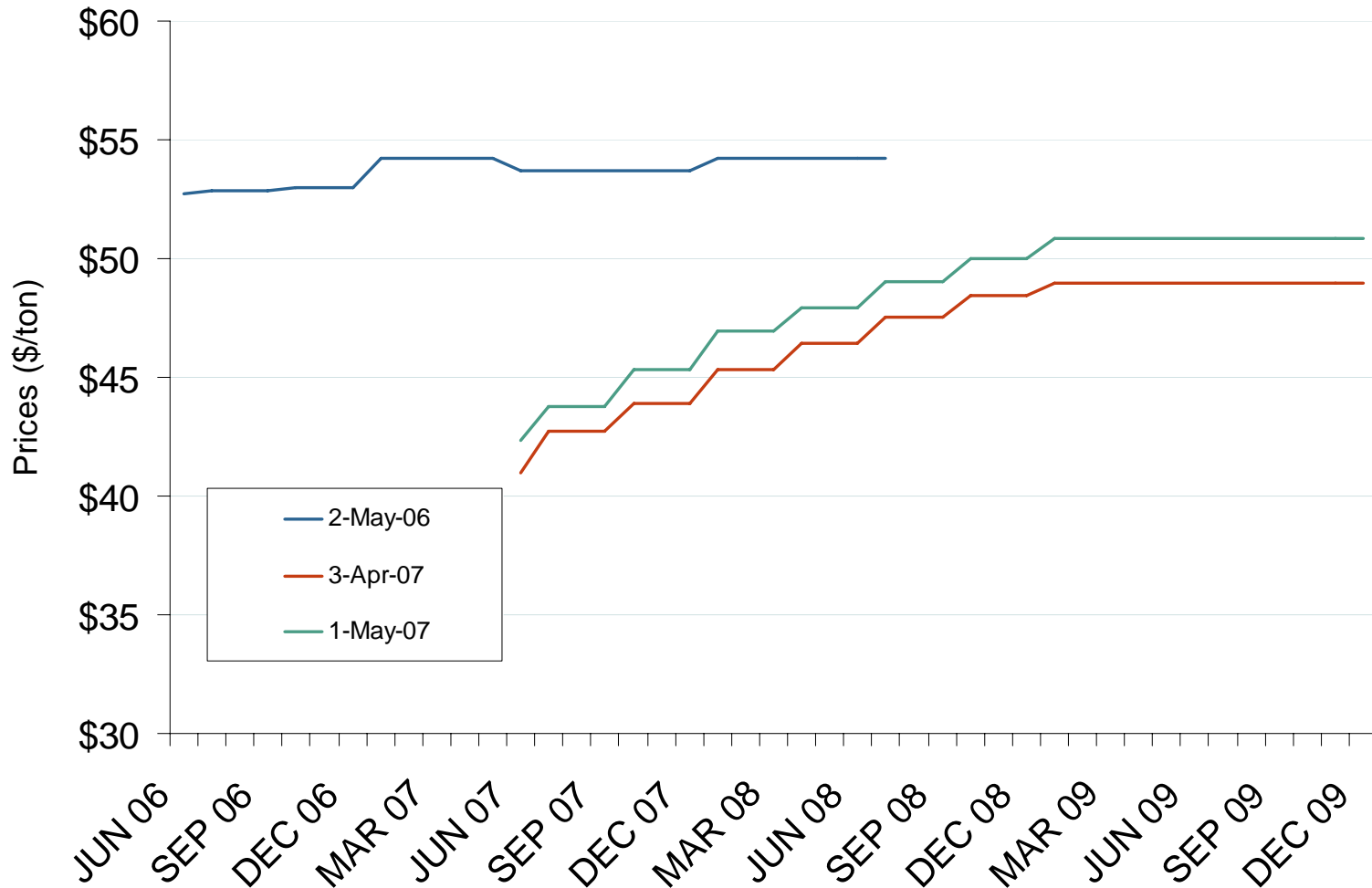
# Central Appalachian and Powder River Basin Coal Prices



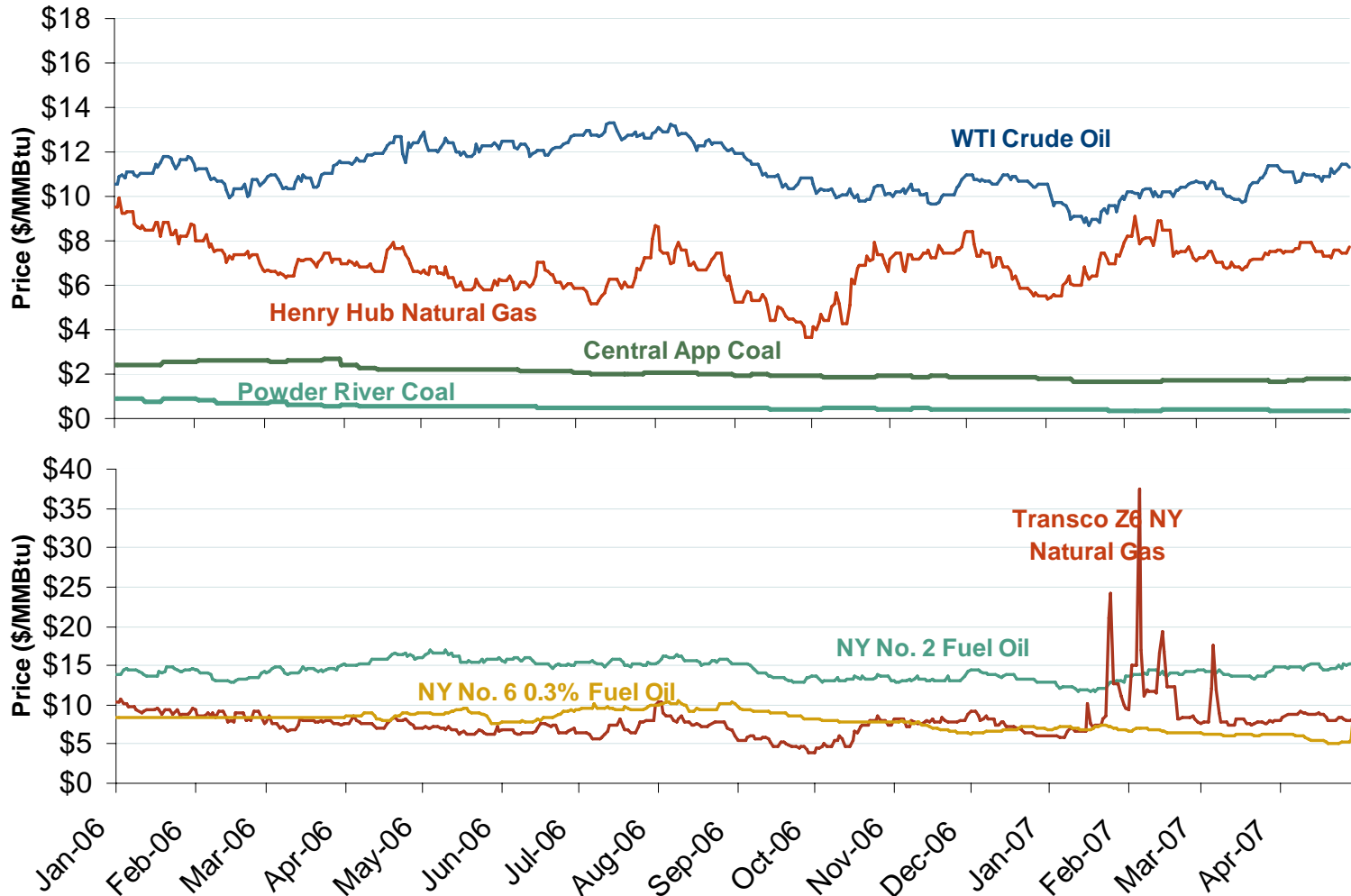
Source: Derived from Bloomberg data.

Updated May 4, 2007

## Central Appalachian Coal Futures Prices



## Oil, Coal and Natural Gas Daily Spot Prices



Source: Derived from ICE and Bloomberg data.

Note: Coal prices are quoted in \$/ton. Conversion factors to \$/MMBtu are based on contract specifications of 12,000 btus/pound for Central Appalachian coal and 8800 btus/pound for Powder River Basin coal.

Updated May 4, 2007