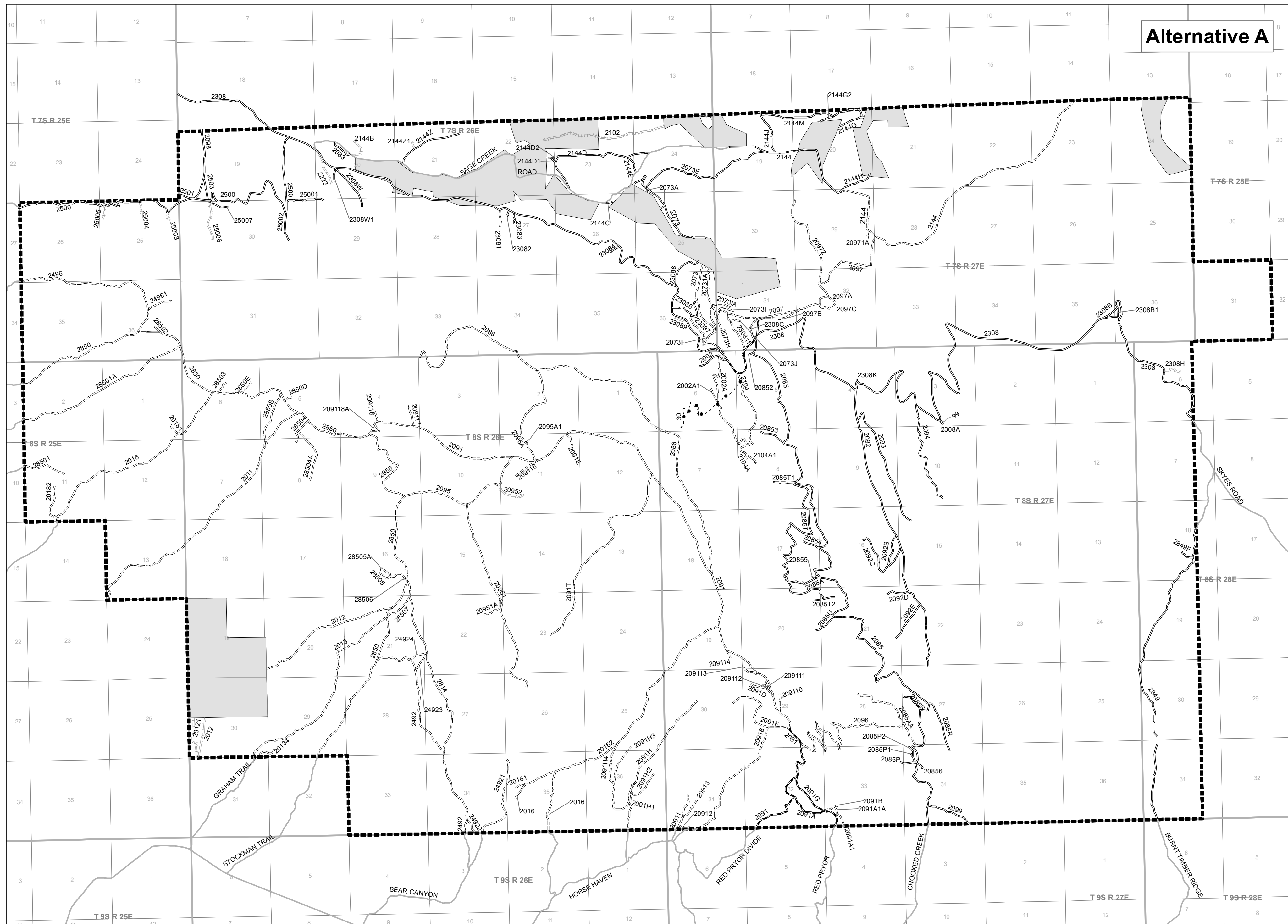
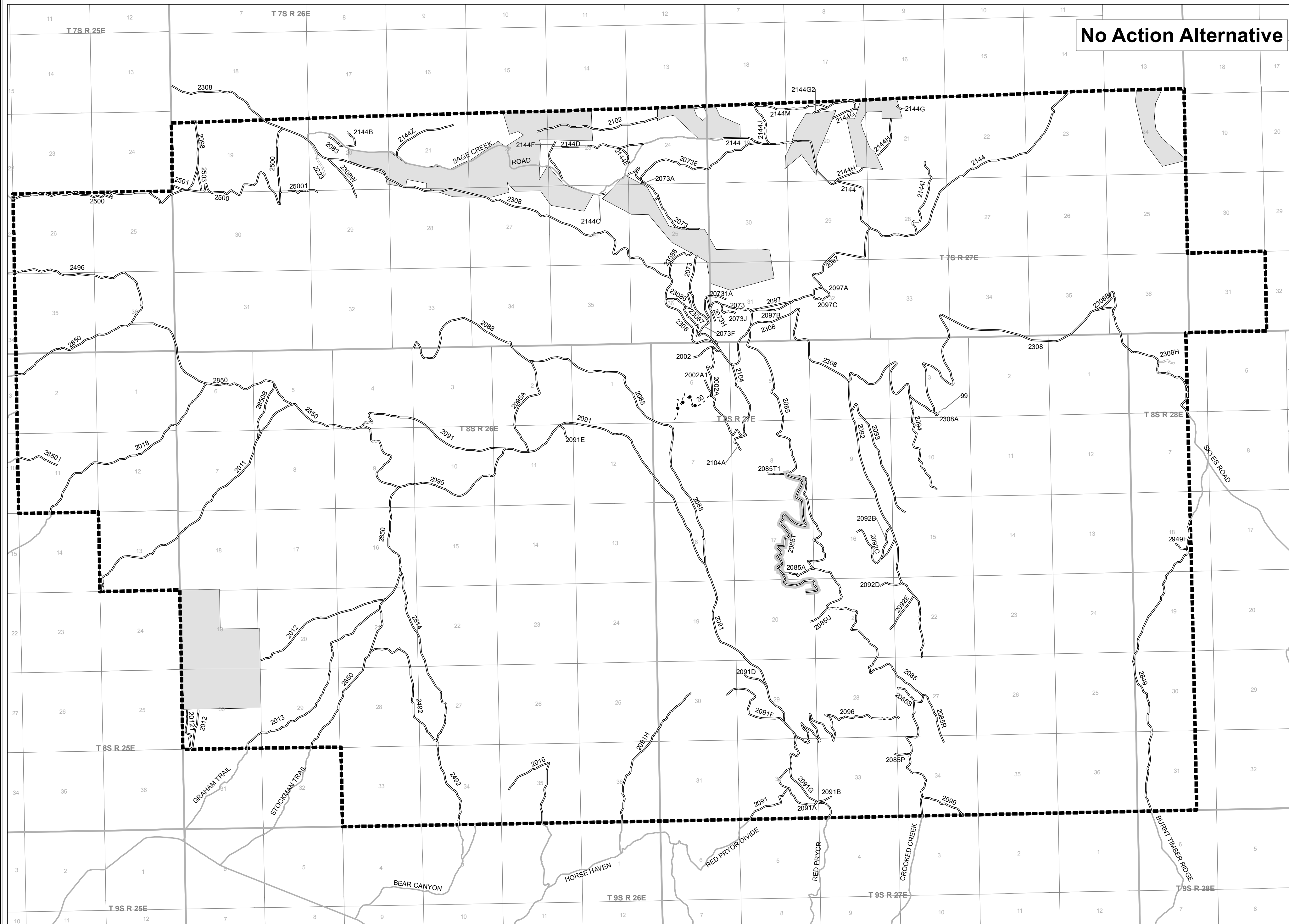


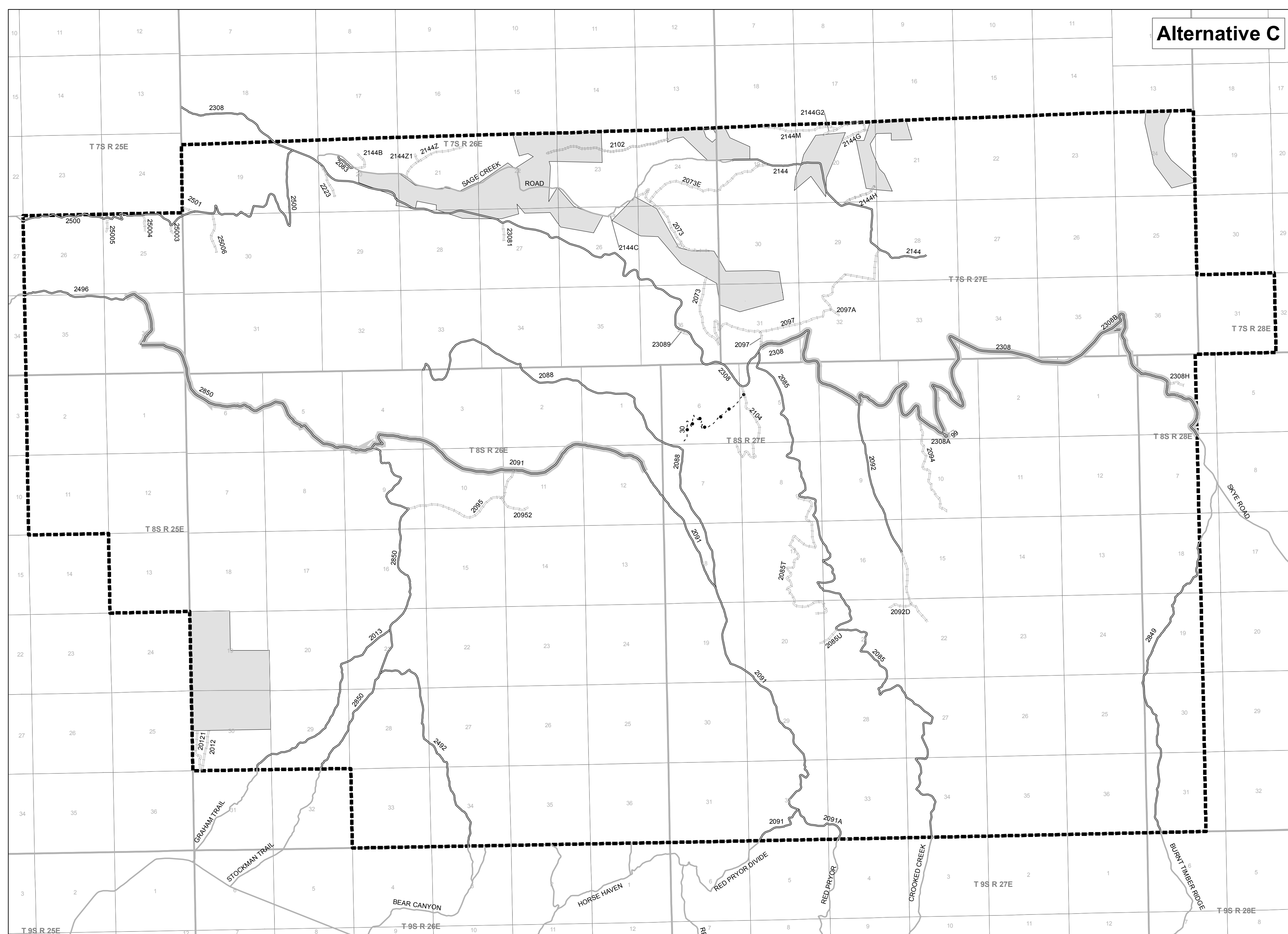
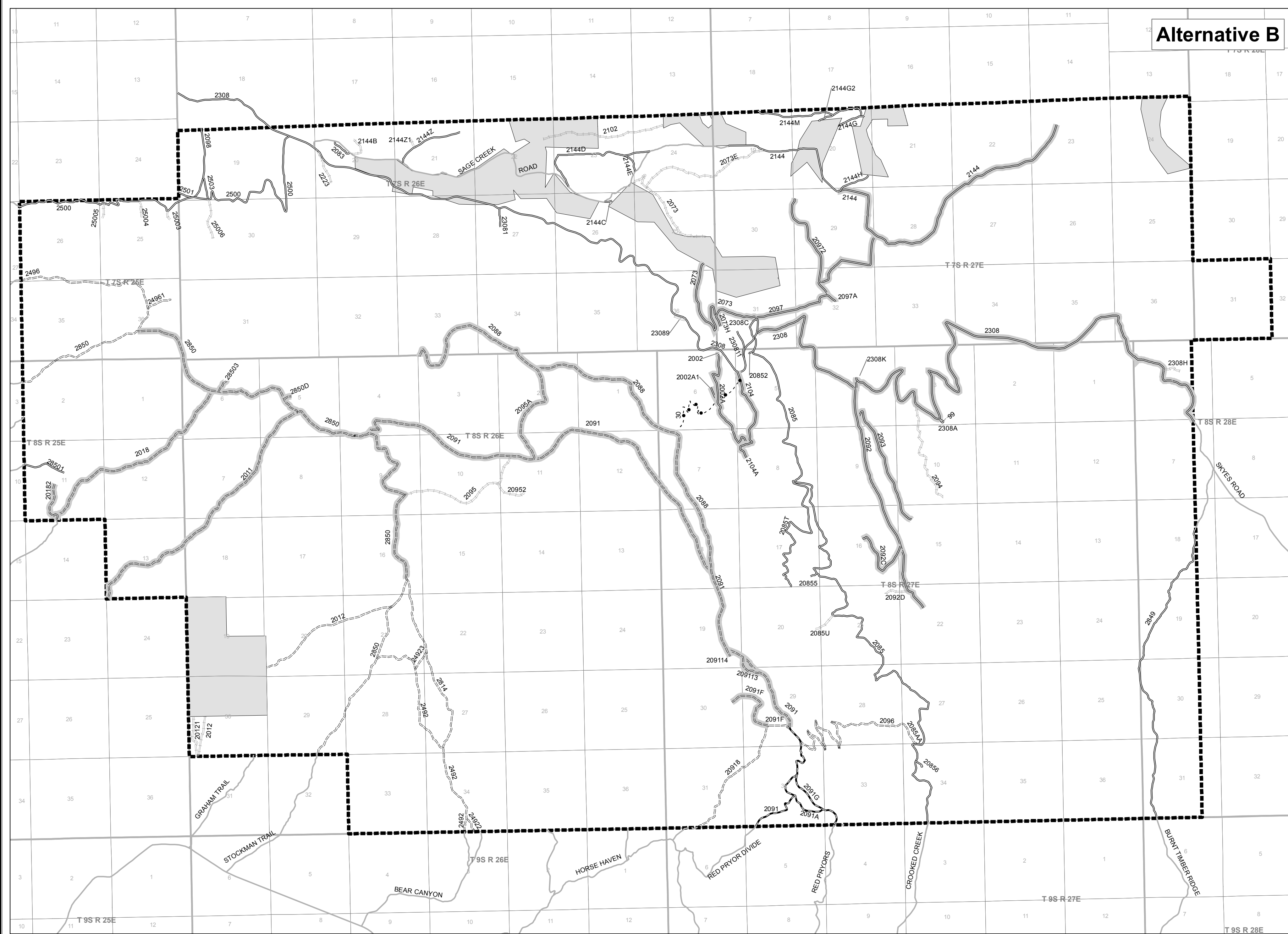
No Action Alternative

Alternative A



Alternative B

Alternative C



FEIS June 2008
Pryors Unit
Travel Management
Custer National Forest
Beatooth Ranger District

Legend (See Appendix C for further detail)

- | | | | |
|---|--|---|--|
| <ul style="list-style-type: none"> — Roads open to all vehicles, Yearlong — Roads open to all vehicles, Seasonal — Roads open to highway vehicles only, Yearlong — Roads open to highway vehicles only, Seasonal — Administrative use only — Other Public Roads | <ul style="list-style-type: none"> --- Motorized Trails --- Trails open to all OHV's, Yearlong --- Trails open to all OHV's, Seasonal --- Trails open to vehicles 50' or less in width, Yearlong --- Trails open to vehicles 50' or less in width, Seasonal --- Trails open to motorcycles, Yearlong | <ul style="list-style-type: none"> --- Non-Motorized Trails --- Trails open to hiking, mechanized (bicycles, etc) only, Yearlong --- Trails open to hiking only, Yearlong --- Trails open to hiking, pack, saddle, and stock, Day Use --- Trails open to hiking, pack, saddle, and stock, Seasonal --- Trails open to hiking, pack, saddle, and stock, Yearlong --- All non-motorized activity, Yearlong | <ul style="list-style-type: none"> □ Wilderness □ Non-National Forest Lands □ Forest Boundary |
|---|--|---|--|

Scale
1:48,000



Disclaimer
These products are developed from geospatial information prepared by the Custer National Forest. GIS data and product accuracy may vary. The most current transportation layer used was updated in May of 2006.
Map Created By: M Gonzalez
date: 8/27/2007, Updated: 5/14/2008
Project Location: J:\files\office\gis\proj\working\trans\02\travel_mgmt\final_maps
Project Name: pryors2_all.mxd

