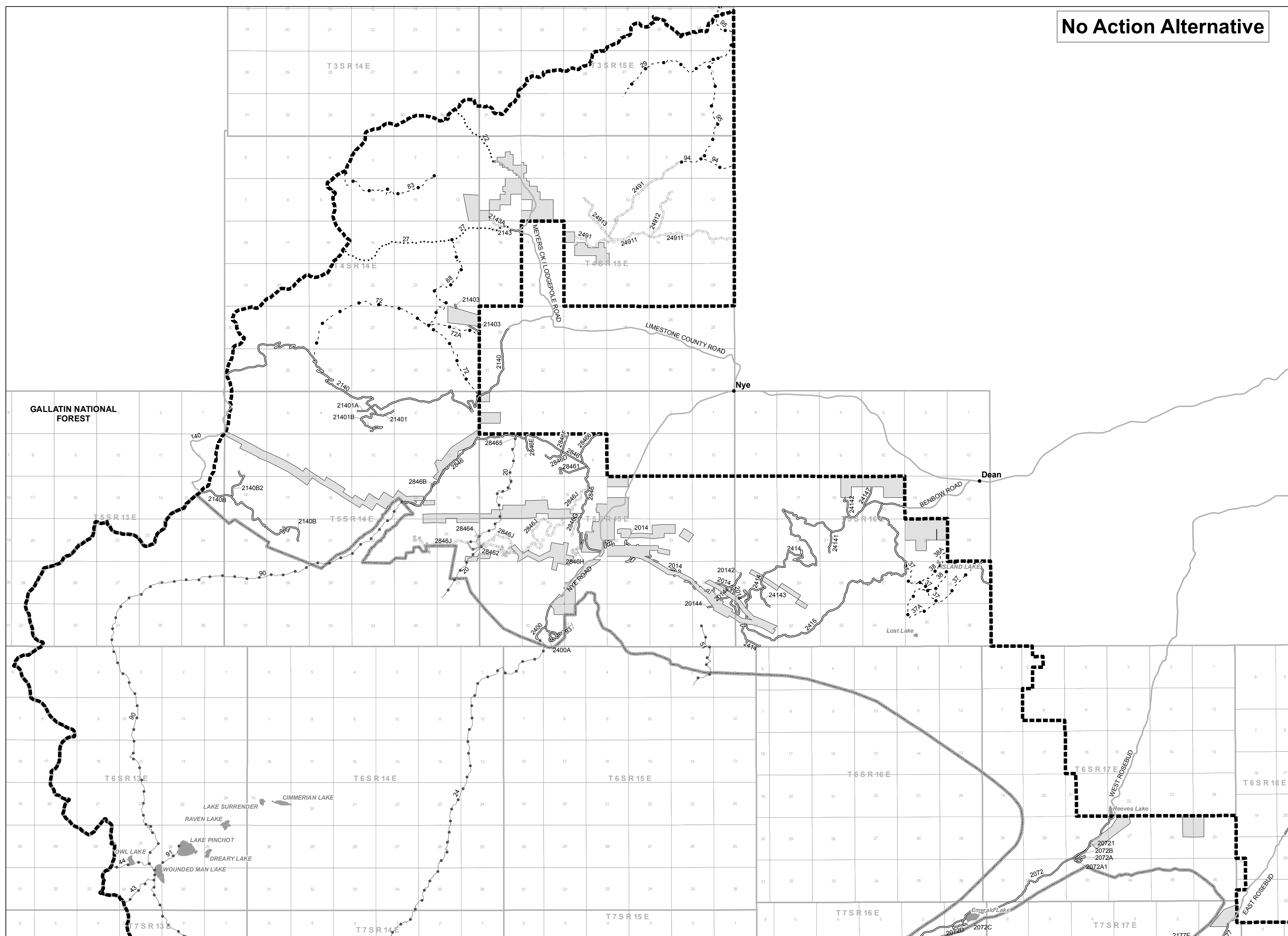
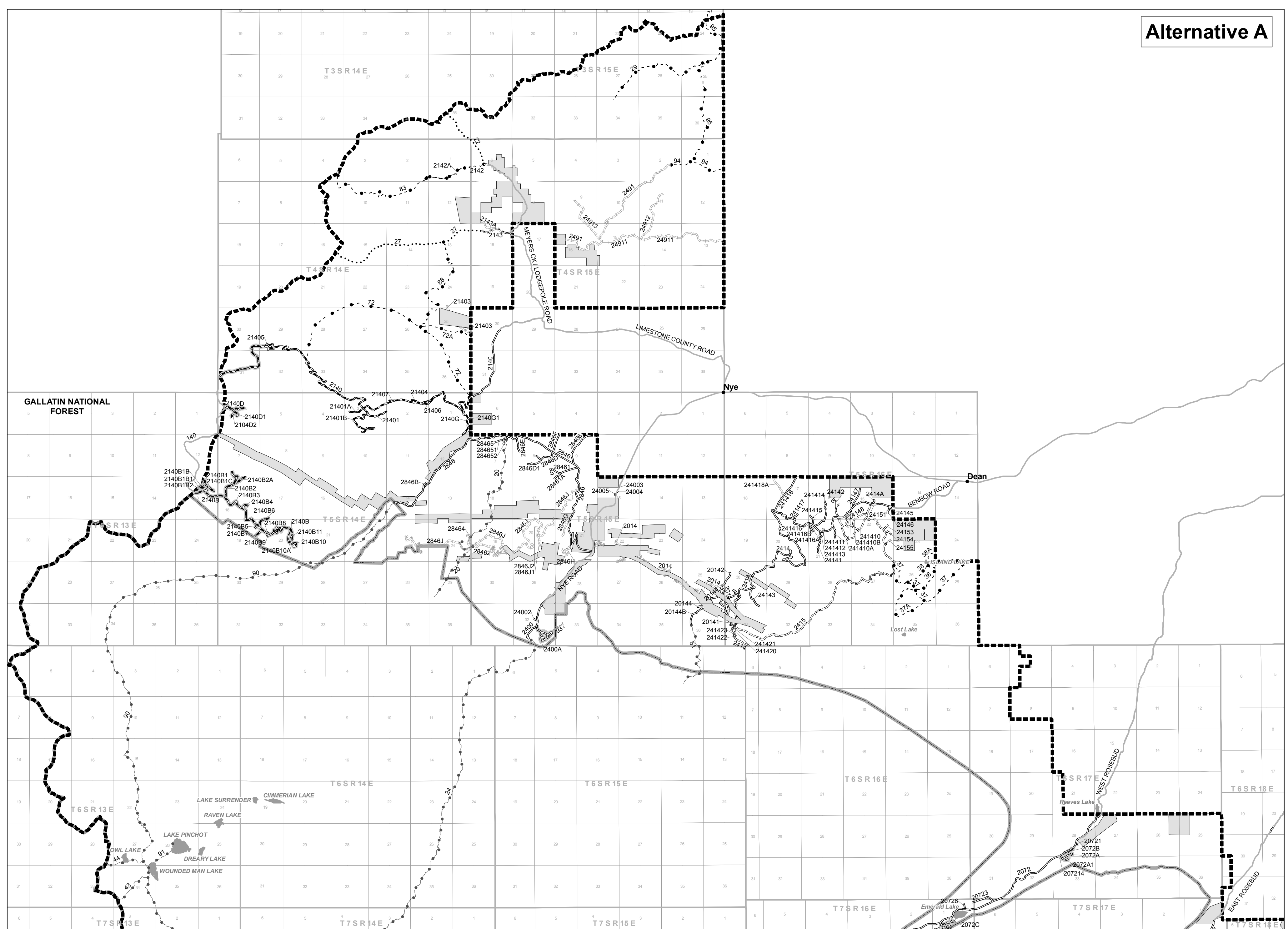


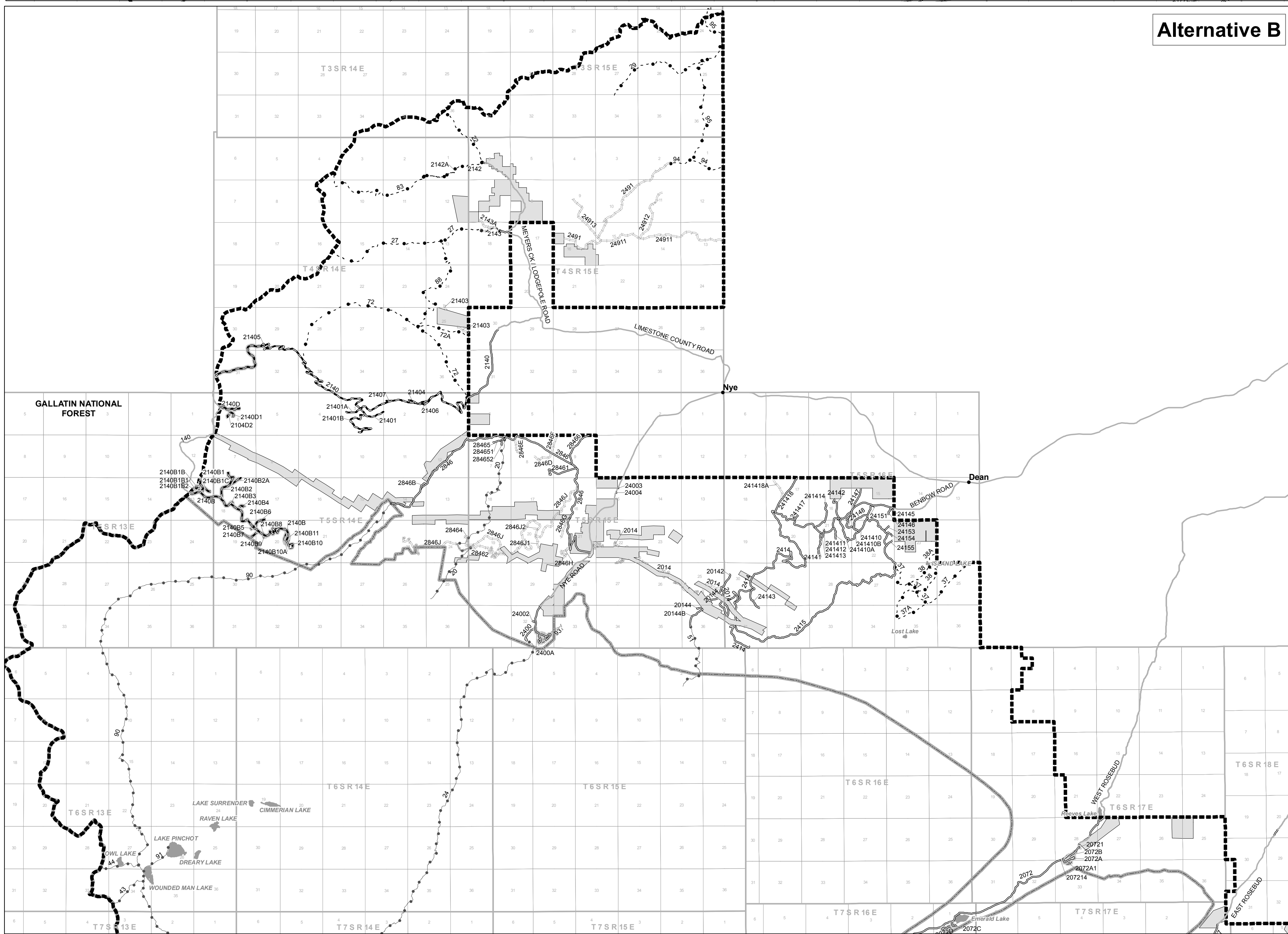
No Action Alternative



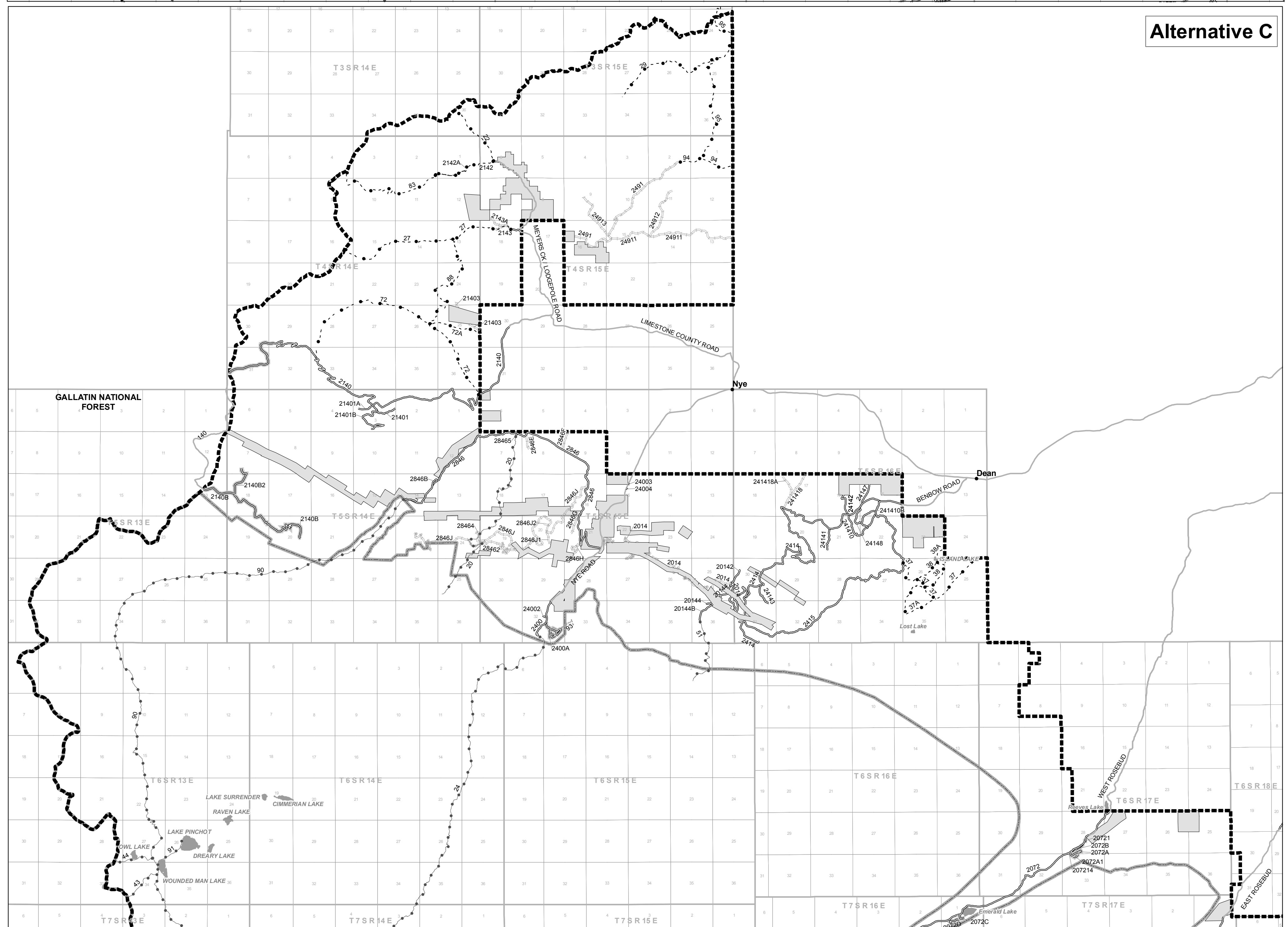
Alternative A



Alternative B



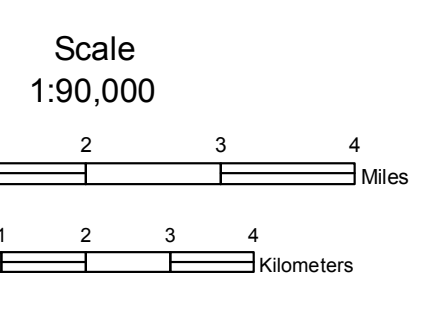
Alternative C



FEIS June 2008  
North Beartooth Unit  
Travel Management  
Custer National Forest  
Beartooth Ranger District

Legend (See Appendix C for further detail)

Roads	Motorized Trails	Non-Motorized Trails	Wilderness
— Roads open to all vehicles, Yearlong	— Trails open to all OHVs, Yearlong	— Trails open to hiking, mechanized (bicycles, etc) only, Yearlong	— Wilderness
— Roads open to all vehicles, Seasonal	— Trails open to all OHVs, Seasonal	— Trails open to hiking only, Yearlong	— Non-National Forest Lands
— Roads open to highway vehicles only, Yearlong	— Trails open to vehicles 50' or less in width, Yearlong	— Trails open to hiking, pack, saddle, and stock, Day Use	— Forest Boundary
— Roads open to highway vehicles only, Seasonal	— Trails open to motorcycles, Yearlong	— Trails open to hiking, pack, saddle, and stock, Seasonal	
— Administrative use only		— Trails open to hiking, pack, saddle, and stock, Yearlong	
— Other Public Roads		— All non-motorized activity, Yearlong	



Disclaimer  
These products are developed from geospatial information prepared by the Custer National Forest. GIS data and product accuracy may vary. The most current transportation layer used was updated in May of 2006.  
Map Created By: M Gonzalez  
date: 8/27/2007, Updated: 4/28/2008  
Project Location: J:\files\office\gispro\working\trans\d2\travel\_mgmt\draft\_maps  
Project Name: bthor3\_all.mxd

