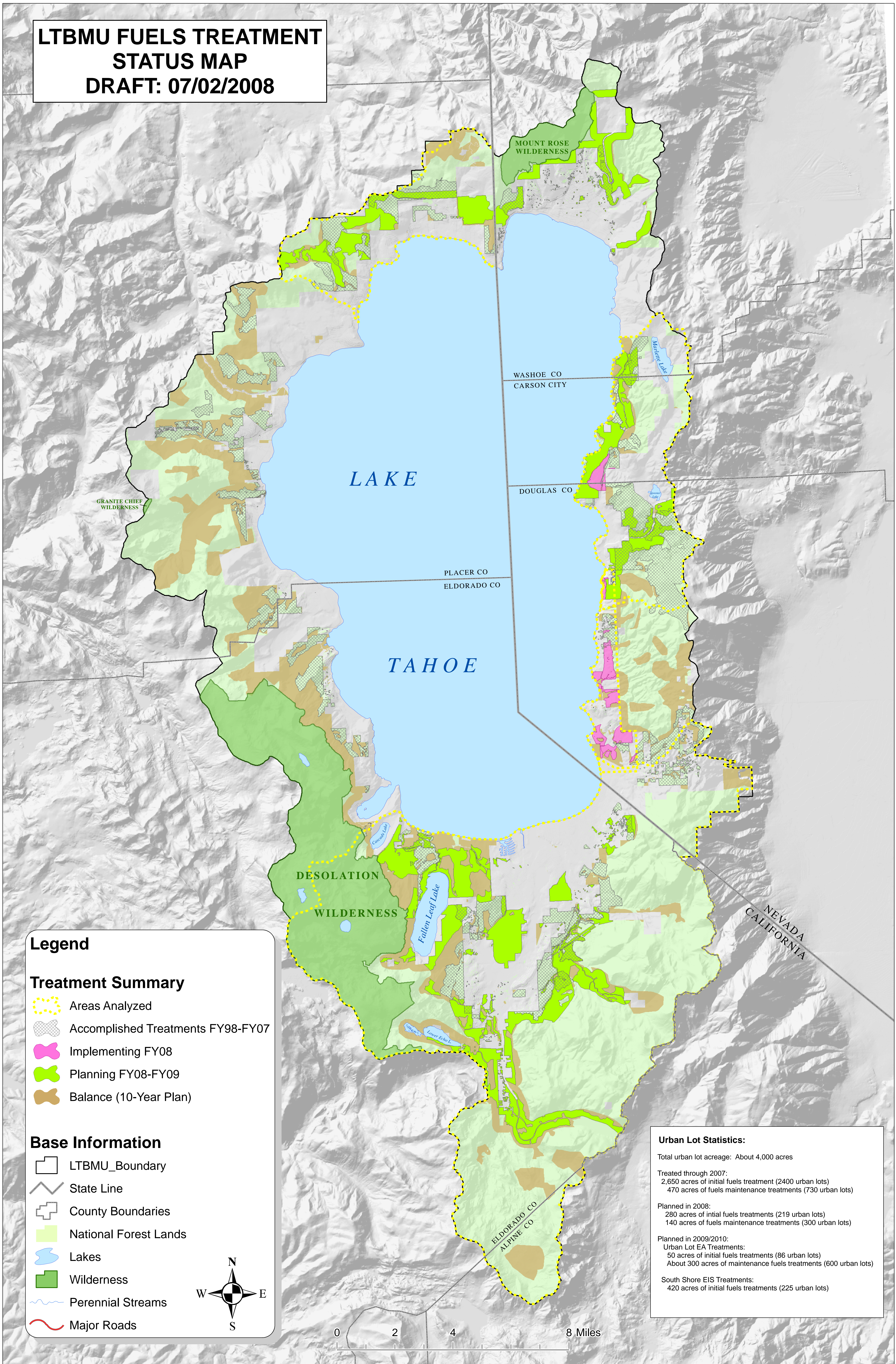


**LTBMU FUELS TREATMENT
STATUS MAP
DRAFT: 07/02/2008**



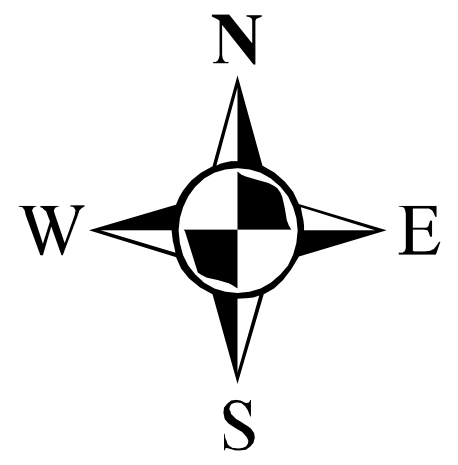
Legend

Treatment Summary

- Areas Analyzed
- Accomplished Treatments FY98-FY07
- Implementing FY08
- Planning FY08-FY09
- Balance (10-Year Plan)

Base Information

- LTBMU_Boundary
- State Line
- County Boundaries
- National Forest Lands
- Lakes
- Wilderness
- Perennial Streams
- Major Roads



Urban Lot Statistics:

Total urban lot acreage: About 4,000 acres

Treated through 2007:
 2,650 acres of initial fuels treatment (2400 urban lots)
 470 acres of fuels maintenance treatments (730 urban lots)

Planned in 2008:
 280 acres of initial fuels treatments (219 urban lots)
 140 acres of fuels maintenance treatments (300 urban lots)

Planned in 2009/2010:
 Urban Lot EA Treatments:
 50 acres of initial fuels treatments (86 urban lots)
 About 300 acres of maintenance fuels treatments (600 urban lots)

South Shore EIS Treatments:
 420 acres of initial fuels treatments (225 urban lots)