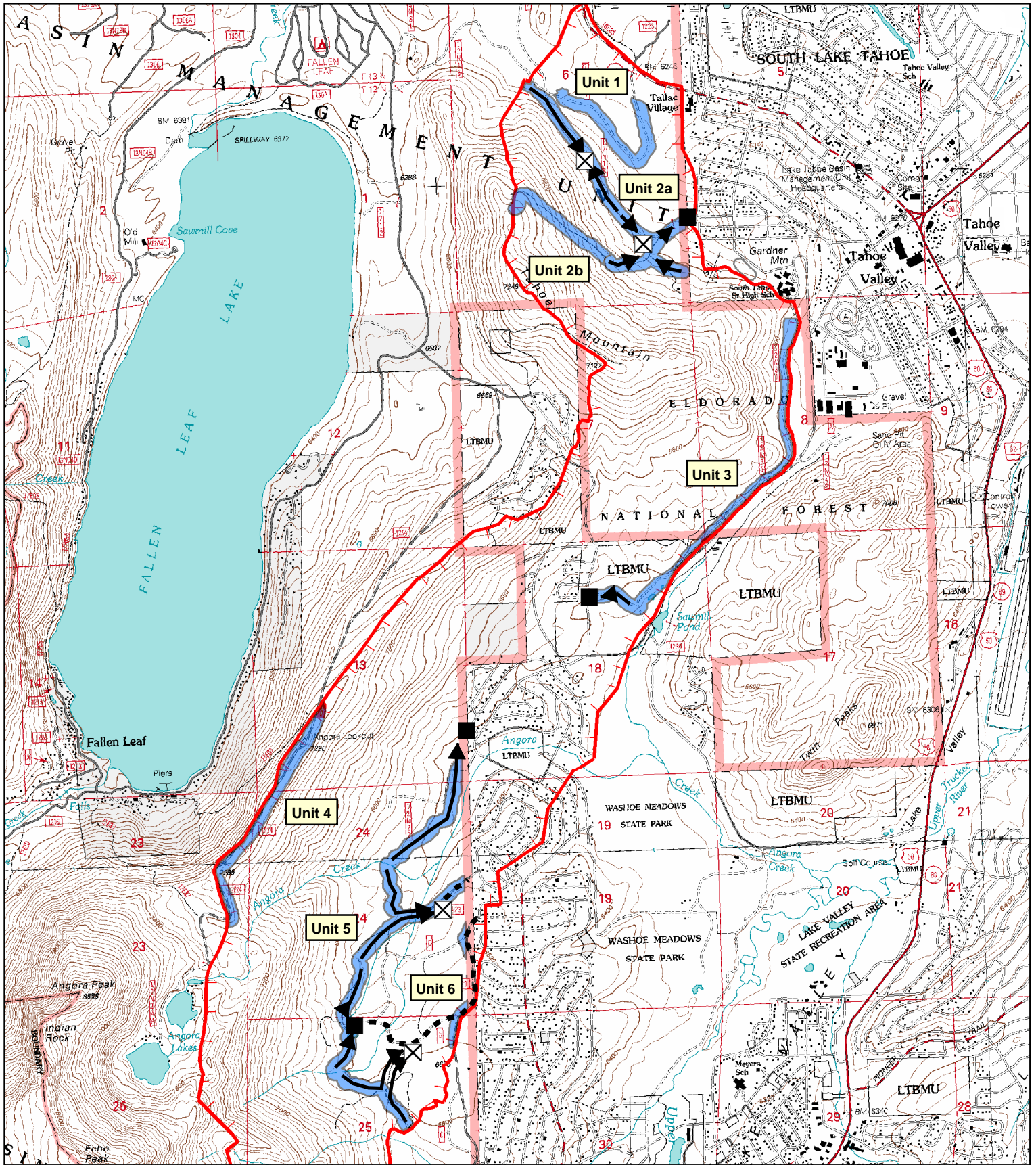


Angora Hazard Tree Removal



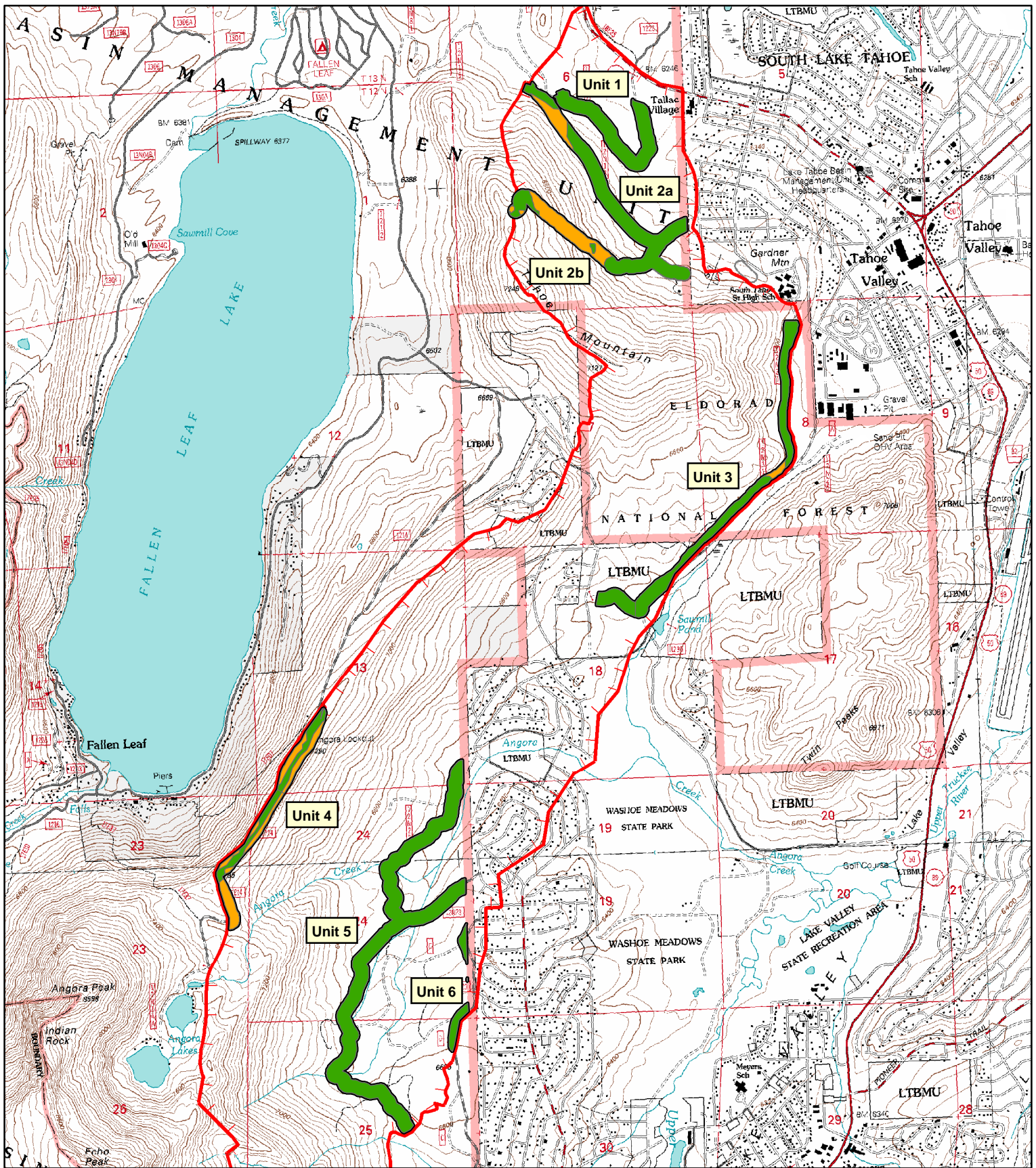
	Fire Perimeter		Haul Route
	Project Area Boundary by Unit		Skidding/Forwarding Route
Landings			Potential Use of Existing
			Potential New Landing



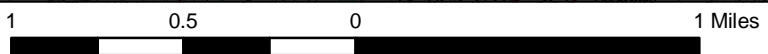
The Forest Service uses the most current and complete data available. GIS data and product accuracy may vary. They may be developed from sources of differing accuracy, available only at certain scales. Based on modeling or interpretation, incomplete while being created or revised, etc. Using GIS products for purposes other than those for which they were created, mapped, analyzed or used is not recommended. The Forest Service reserves the right to correct, update, modify or replace GIS products without notification.

For more information, contact: Lake Tahoe Basin Management Unit
 85 Corvair Drive, South Lake Tahoe, CA 96150
 (530) 540-2569 (530) 541-6936 TTY

Angora Hazard Tree Removal



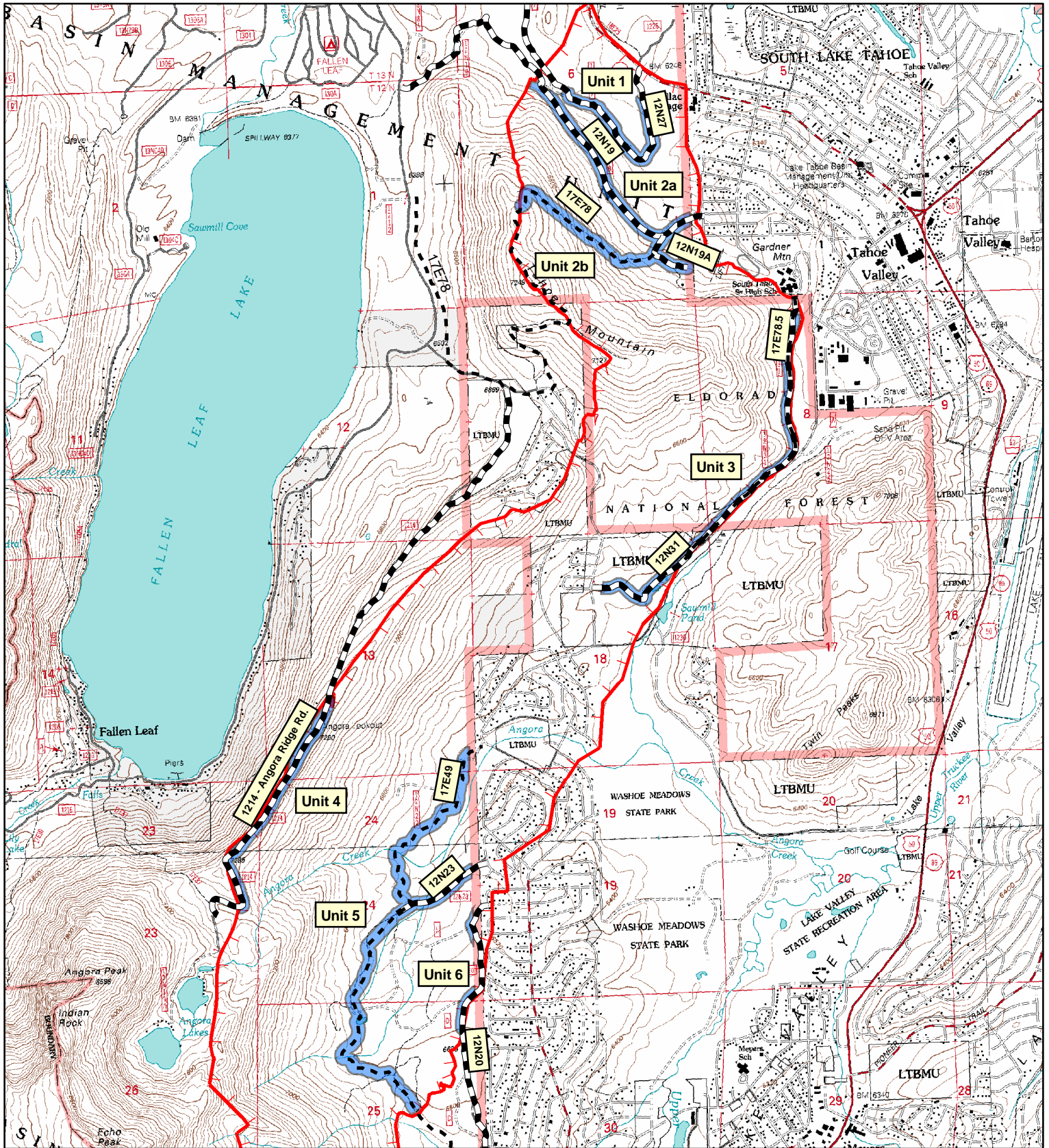
 Fire Perimeter
 Project Area Boundaries by Unit
slope
 <math><30\%</math>
 >30%







The Forest Service uses the most current and complete data available. GIS data and product accuracy may vary. They may be developed from sources of differing accuracy, available only at certain scales. Based on modeling or interpretation, incomplete while being created or revised, etc. Using GIS products for purposes other than those for which they were created, mapped, analyzed or modeled results. The Forest Service reserves the right to correct, update, modify or replace GIS products without notification.

For more information, contact: Lake Tahoe Basin Management Unit
 85 Colville Blvd, South Lake Tahoe, CA 96150
 (530) 540-2565 (530) 541-6636 TTY

Angora Hazard Tree Removal



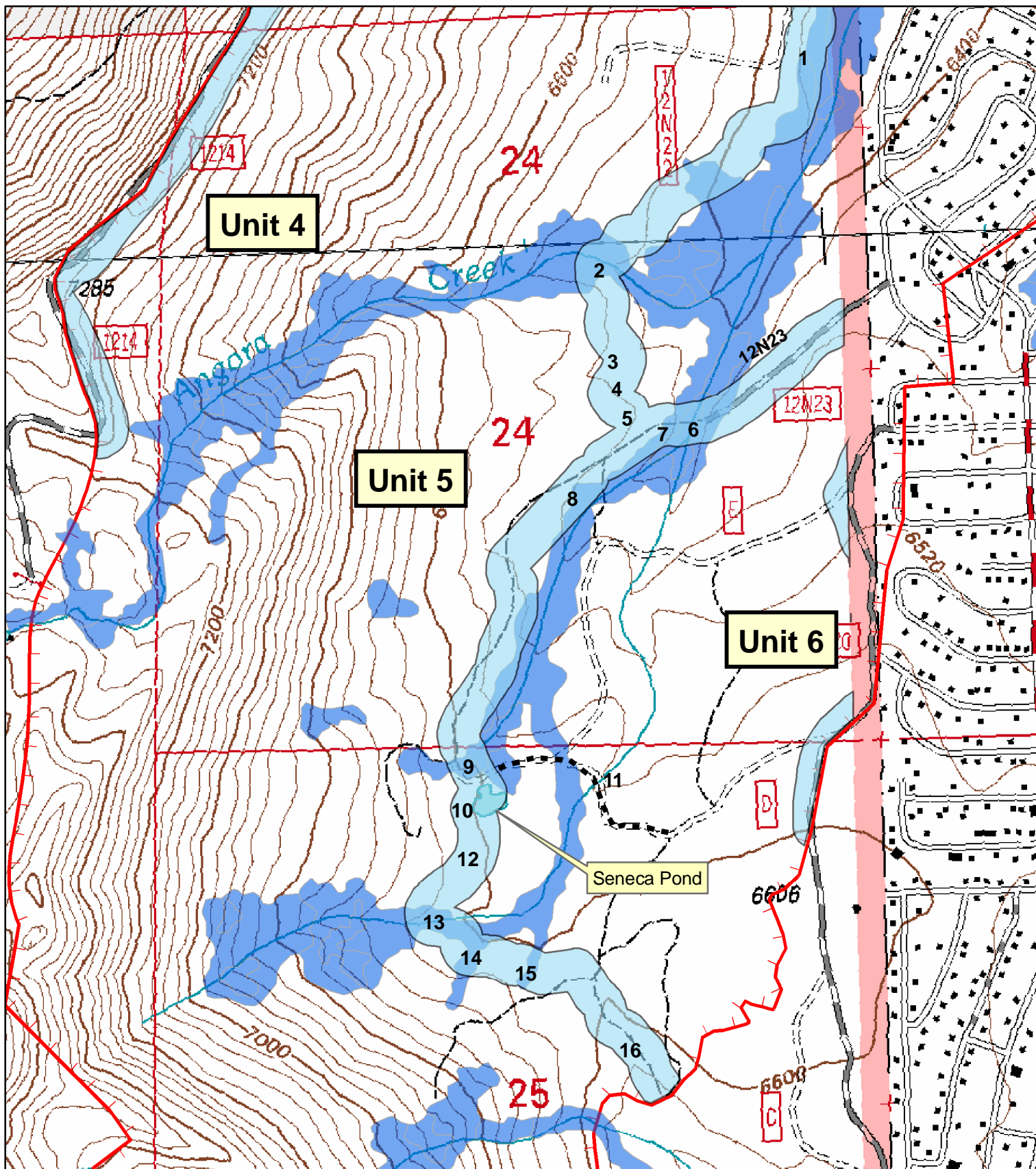
-  Fire Perimeter
-  Project Area Boundary by Unit
-  Forest System Roads
-  Forest System Trails



The Forest Service uses the most current and complete data available. GIS data and product accuracy may vary. They may be developed from sources of differing accuracy; accurate only at certain scales; based on modeling or interpretation; incomplete while being created or revised; etc. Using GIS products for purposes other than those for which they were created may yield inaccurate or misleading results. The Forest Service reserves the right to correct, update, modify or replace GIS products without notification.

For more information, contact: Lake Tahoe Basin Management Unit
 35 College Drive, South Lake Tahoe CA 96150
 (530) 542-2300 (530) 541-4055 TTY

Angora Hazard Tree Removal



- Angora Fire Perimeter
- Project Area Boundary by Unit
- Riparian Vegetation - SEZ
- Re-construct Non-System Road

Note: Numbers depicted within project area boundary reference specific Design Features. For additional information refer to the Angora Hazard Tree Removal Decision Memo, Design Features by Unit, Unit 5.



0.1 0.05 0 0.1 Miles



The Forest Service uses the most current and complete data available. GIS data and product accuracy may vary. They may be developed from sources of differing accuracy, accuracy only at certain scales. Based on modeling or interpretation; incomplete while being created or revised, etc. Using GIS products for purposes other than those for which they were created, reproduced, inaccurate or misleading results. The Forest Service reserves the right to correct, update, modify or replace GIS products without notification.

For more information, contact: Liana Tipton Basin Management Unit
85 Corralge Drive, South Lake Tahoe, CA 96150
(530) 540-2565 (530) 541-6636 TTY