



File Code: 1950

Date: September 4, 2002

On June 4, 2002, you were mailed a copy of the Kootenai Forest's Quarterly Schedule of Proposed Actions (SOPA). This SOPA is mailed to over 300 individuals, organizations, American Indian Tribes, and State and Federal agencies, on a quarterly basis and provides a summary of proposed and ongoing activities on the Kootenai National Forest. The June SOPA accompanied a letter that encouraged the use of our website (www.fs.fed.us/r1/kootenai) for viewing the SOPA and/or subscribing to the SOPA electronically. In this letter we asked that you return a form to the Forest if you wanted to remain on the "regular" mail mailing list.

A limited number of responses were received, therefore, we have included the response form again in this letter. If you have already contacted us in some manner there is no need to provide an additional response.

Again, I would like to strongly encourage everyone to utilize our website OR "subscribe" to the SOPA electronically. The internet is the most efficient, current and cost effective way of receiving information. Our future goal is to have all of our public information available to you on the website. Today, you can sign up to subscribe to the SOPA by visiting this website OR by returning the attached response form. You will receive an email message each time the SOPA is published.

The next few pages contain information to help you understand the SOPA format and the associated NEPA (National Environmental Policy Act) process. It is important for you to understand this process so that you can request the environmental documents that really interest you. I want to stress that your participation in these activities, in a timely manner, can promote better decisions by helping us understand alternatives to our proposals and to evaluate their implications on the land and the adjacent communities.

If you would like more information on a specific project identified on the SOPA, please contact the District or Forest contact person listed for each project. Or contact Kirsten Kaiser, Forest Environmental Coordinator, at 406-293-6211 or kkaiser@fs.fed.us.

Sincerely,

BOB CASTANEDA
Forest Supervisor

Enclosure

INFORMATION ABOUT THE QUARTERLY SCHEDULE OF PROPOSED ACTIONS (SOPA)

The enclosed SOPA provides information about projects for which we have a specific proposal and are in the process of analyzing, as directed by the National Environmental Policy Act (NEPA).

Projects on the SOPA are arranged in a table format and are sorted by Ranger District, by type of project, and by date expected for each decision for each project. There are several points in the planning process during which you can be the most helpful and influential, but exact steps and timing may vary depending on the type and complexity of the project. For example, the whole planning process may only take a few days for small, non-complex projects, or several years for large complex projects such as a major mining proposal. The enclosure labeled "Project Planning Process and Where You Fit In" describes these steps and identifies what you can do to be involved.

DEFINITIONS USED FOR THE SOPA

If you've received previous editions of this list you'll notice that some projects don't appear anymore. That's because we've finished the analysis, made the decision, and the appeal period (if applicable) has ended. In other cases, we've removed the projects from the list because we're unable to pursue them for various reasons (lack of funding, conflicts with other forest priorities, etc.). Please contact the person listed as the "contact" for a project anytime you have a question or would like to be included on the mailing list for the given project.

This list is not inclusive. Some projects may come up after publication that requires our immediate attention, and we may complete the decision document before the next edition.

At the top of each table we have listed the Ranger District, their address, and the "Newspaper of Record" (used by the District for legal notices of decision, and scoping of projects).

The following items describe the column headings and contents in the tables that follow.

MAP KEY: Identifies a number that goes with the attached small forest map to show the general location of the project.

TYPE OF PROJECT: Identifies the Resource Program area that's affected. Acronyms used include:

Mgmt – management

Exchg – Exchange

NAME OF PROJECT: Identifies the name of the environmental document. Acronyms used are:

EIS - Environmental Impact Statement

EA – Environmental Assessment

BPA – Bonneville Power Administration

OSR – Overstory Removal

ORV – Off Road Vehicle

Salv – Salvage

MMBF – Million board feet

LE – Land Exchange

MBF – Thousand board feet

CCF-Hundred cubic feet

RUP-Road Use Permit

LOCATION & PROJECT DESCRIPTION: Identifies both legal land description and the drainage or other identifying on-the-ground feature. If a project is located within an inventoried roadless area it is also noted here. Also included is a general description of the project, such as estimated timber volume, acres proposed for treatment, acres involved with a land exchange, etc.

Acronyms used are: T – Township

R – Range

S – Section

NEPA STATUS: Identifies where we are in the NEPA process. Acronyms used are:

NOI- Notice of Intent published in the Federal Register

ANTICIPATED DECISION DATE: This is the best estimate of when the NEPA analysis will be completed. Sometimes we're not able to meet the date for various reasons but the schedule will be validated and updated each time we send it out.

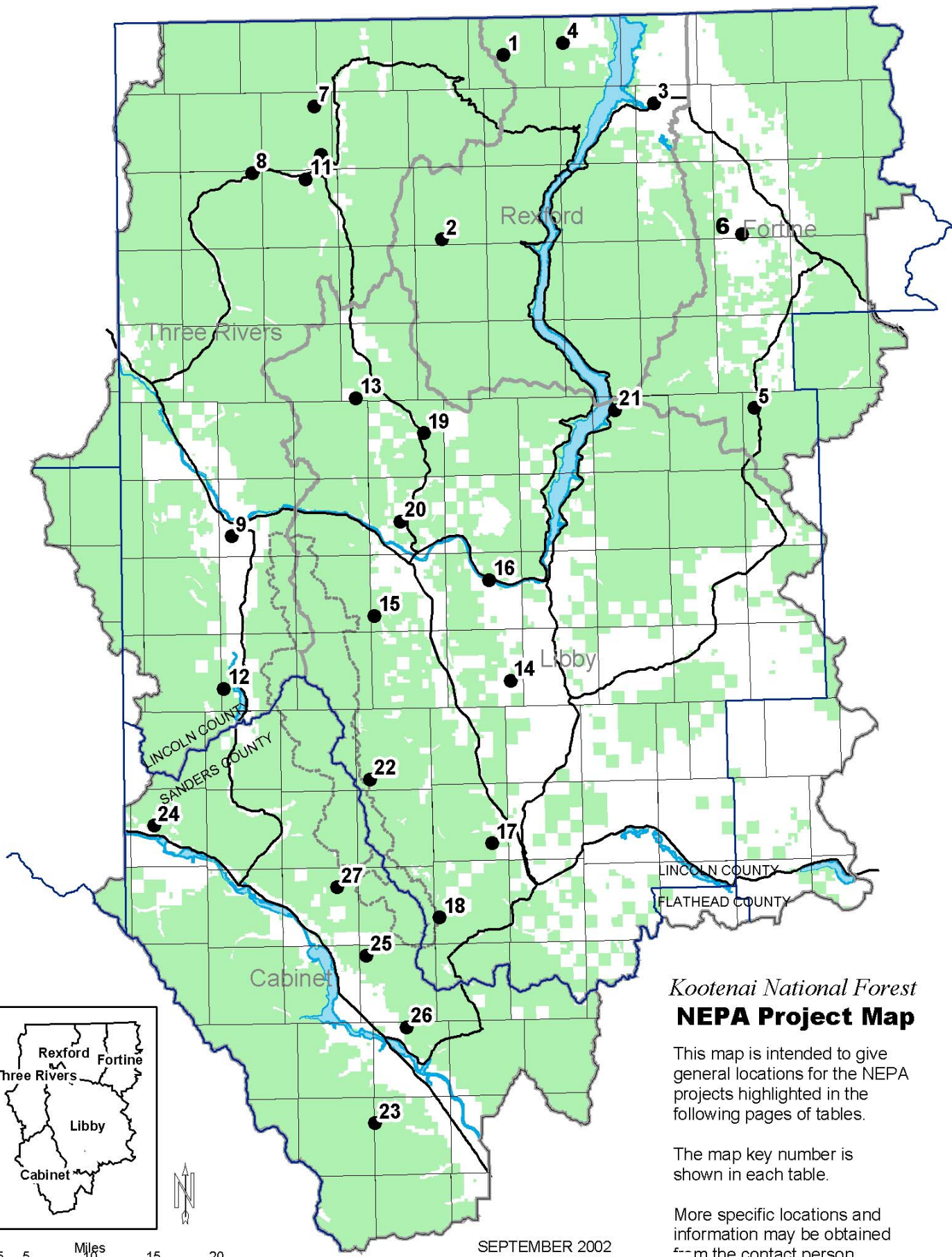
YEAR ACTIVITY TO START ON THE GROUND: This is the best estimate of when ground disturbing activities would occur and/or contracts or permits would be offered.

CONTACT PERSON: This is the person at the Ranger District or Forest to contact for further information regarding the project.

THE PROJECT PLANNING PROCESS & WHERE YOU MIGHT FIT

ANALYSIS STEP	PARTICIPATION OPTIONS
Identify need for project – Forest Service, business, organization, or individual suggests a project	Bring need for a project to the attention of Forest Service
Develop detailed project proposal (Forest Service or other project proponent)	Develop project proposal
Scoping – solicit public comment on the proposal (how it might affect forest resources & uses; how the project could be done better). This defines the scope of environmental analysis needed and the range of alternatives that should be considered	Comment on proposal – suggest issues, concerns, alternatives or mitigation measures t
Develop range of alternatives based on the issues raised during scoping. One alternative is to stay with the status quo (No Action)	Suggest variations to the original proposal
Initiate public comment process (scoping), which includes a 45-day comment period for Draft EIS's and 30-day comment period for most other projects. A copy of the environmental document will be mailed to those who requested a copy and to those who have participated in the environmental analysis process. A legal notice, requesting comments on appealable projects, will be published in the <i>Daily Inter Lake</i> , Kalispell, MT, which is our newspaper of record (36 CFR 215.5)	Provide comments on the environmental analysis. See 36 CFR 215.6 for description of information to provide
Notice of appealable decisions will be published in the newspaper of record. Copies of the decision document will be sent to those who submitted comments on the proposed action either before or during the comment period identified above (36 CFR 215.9)	Review decision: exercise option to appeal, when applicable, through administrative process
Appeal period will be open for 45 days following legal notice of decision in the newspaper except if no one expressed interest and there is no change from the proposed action. (36 CFR 215.10)	File Notice of Appeal (see section 36 CFR 215.14 for contents of an appeal) NOTE: Only those who commented through the process described above or expressed interest will be able to appeal. (36 CFR 215.11)
Implement the project	Contribute labor, equipment or funding
Monitor & evaluate project results	Provide feedback on the project

The U.S. Department of Agriculture (USDA) prohibits discrimination in its programs on the basis of race, color, national origin, sex, religion, age, disability, political beliefs, sexual orientation, or marital or family status. (Not all prohibited bases apply to all programs.) Persons with disabilities who require alternative means for communication of program information (Braille, large print, audiotape, etc.) should contact USDA's TARGET Center at 202-720-2600 (voice and TDD). To file a complaint of discrimination, write USDA, Director, Office of Civil Rights, Room 326-W, Whitten Building, 1400 Independence Avenue SW, Washington, DC 20250-9410, or call 202-720- 5964 (voice or TDD). USDA Forest Service is an equal opportunity provider and employer



Kootenai National Forest
NEPA Project Map

This map is intended to give general locations for the NEPA projects highlighted in the following pages of tables.

The map key number is shown in each table.

More specific locations and information may be obtained from the contact person.

SEPTEMBER 2002

REXFORD RANGER DISTRICT, 1299 Hwy 93 N, Eureka, MT 59917 - Phone: 406-296-2536, Fax: 406-296-7188

NEWSPAPER OF RECORD: *DAILY INTER LAKE, Kalispell, MT*

MAP KEY	TYPE OF PROJECT	NAME OF PROJECT	LOCATION & PROJECT DESCRIPTION	NEPA STATUS	ANTICIPATED DECISION DATE	YEAR ACTIVITY TO START ON GROUND	CONTACT PERSON
1	Timber Sale, Fuels, Watershed Restoration	Young J	T37N, R29W. Young Creek drainage. Includes 390 Acres, 3300 MMBF (6612CCF), Forest Plan Amendment for Open Road Density.	EA Comment Period	November 2002	2003	Ron Komac 296-7130
2	Timber Sale, Fuels, Silviculture, Watershed Restoration	Lower Big Creek	T33-36N, R29-31W. Big Creek drainage including North Fork and South Fork of Big Creek. Includes prescribed fire, thinning, and watershed restoration.	Developing Proposal	May 2003	2004	Chris Fox 296-7155
3	Recreation	Koocanusa Drawdown	T36-37N, R27, 28W, T32N, R29W. Mouth of the Tobacco River, Sophie Bay, Mouth of Bristow Creek. Access and travel management within the reservoir and draw down area.	Developing Proposal	December 2002	2003	Cindy Henry 296-7149
4	Special Uses	Young Creek State Access	T37N, R28W, Section 17. Young Creek Drainage. Road construction (1000 feet) on FS lands.	Notice of Decision 9/02	Complete	2002	Ron Komac 296-7130

FORTINE RANGER DISTRICT, PO Box 116, Eureka, MT 59917 - Phone: 406-296-2536, Fax: 406-296-7188

NEWSPAPER OF RECORD: *DAILY INTER LAKE, Kalispell, MT*

MAP KEY	TYPE OF PROJECT	NAME OF PROJECT	LOCATION & PROJECT DESCRIPTION	NEPA STATUS	ANTICIPATED DECISION DATE	YEAR ACTIVITY TO START ON GROUND	CONTACT PERSON
5	Timber Sale, Fuels, Watershed Restoration	Fortine	T33N, R26W, Sections 21-22, 27-29, 31-35; T32; T32N, R28W.; Sections 3-11, 14-36; T32N, R27W; Sections 1-2, 11-14, 23-26; T31N, R26W; Sections 3-5, 8-10, 15, and 16; Fortine Watershed. May include Forest Plan Amendments, timber harvest, prescribed burning, watershed restoration, road decommissioning.	Developing Proposal	December 2003	2004	Joleen Dunham 882-8325
6	Range	Loon Roberts Allotment Term Grazing Permit	T34N, R26W, Sections 11-15, 22-26; T34N, R26W, Sections 1-3; T35N, R26W, Sections 26, 33-35. Marl and Loon Lake areas, west of Fortine, MT.	Decision Pending	September 2002	2002	Jan Jorgensen 882-8310

MAP KEY	TYPE OF PROJECT	NAME OF PROJECT	LOCATION	NEPA STATUS	ANTICIPATED DECISION DATE	YEAR ACTIVITY TO START ON GROUND	CONTACT PERSON
7	Timber Sales, Fuels, Silviculture	Garver	Portions of T36N, R32W; T36N, R31W; T37N, R32W; and T37N, R31W; within the West Fork Yaak, Pete Creek, and Yaak Face drainages. Includes prescribed burning in the West Fork Yaak Inventoried Roadless Area , changes to old growth designations, and precommercial thinning.	Analyzing Effects	December 2002	2003	Kathy Mohar
*	Silviculture	Timber Stand Improvement 2002	Precommercial thinning is District-wide, 18 units. The White Pine pruning would occur in 3 units in the Cool Cr. Burnt Cr., and O'Brien Cr. areas.	Notice of Decision 7/22/02	Completed	2002	Joe Hessenkemper
8	Fuels	Whitetail Bog Burn	Portion of Section 31, T36N, R32W; East of Whitetail Campground (opposite side of Yaak River).	Deferred		2002 or 2003	Jeff Stevenson
9	Fuels	Plateau	Portion of Section 20, T31N, R33W; near Wilderness Plateau Subdivision, Troy, MT.	Analyzing Effects	September 2002	2003	Steve Straley
10	Fuels Silviculture	Yaak Community Fuels	Portions of Section 30, T36N, R31W. Hazard tree removal and fuel reduction on 5 acres around the Yaak Community Hall.	Analyzing Effects	September 2002	2002	Jeff Stevenson
11	Special Use Permit/Easement	Cool Creek Access	T35N, R32W, Sections 2, 3, 4, Lincoln County, Montana; across the Yaak River from Yaak, MT.	Analyzing Effects	June 2003	2003	Dick Harlow
12	Road Uses	Stanley Creek Access	Request for a RUP to haul 200 MBF of timber on FS. Rd. 4626 within portions of Section 35 and 36, T29N, R34W and portions of Section 6, T29N, R34W.	Seeking Public Comment	June 2003	2003	Dick Harlow

MAP KEY	TYPE OF PROJECT	NAME OF PROJECT	LOCATION & PROJECT DESCRIPTION	NEPA STATUS	ANTICIPATED DECISION DATE	YEAR ACTIVITY TO START ON GROUND	CONTACT PERSON
13	Timber Sale	Pipestone	T34N, R32W, Section 36; T34N, R31W, Sections 11,14,15,21-36; T34N, R30W, Section 1; T33N, R32W, Sections 1,12,23-5,36; T33N, R31W, Sections 1-36; T33N, R30W, Sections 18-20,29-33; T32N, R32W, Sections 1,12-13,24,25,36; T32N,R31W,Sections 1-36; T32N, R30W, Sections 5-10,15-21,29-32; T31N, R31W, Sections 1-22,29,30; T31N, R30W, Sections 4-9,17,18. Pipe Creek area. 13,170 CCF (5.4 MMBF). Includes Forest Plan ORD, VQO, movement corridors, and hiding cover amendments, openings greater than 40 acres, prescribed burning in the Gold Hill West Inventoried Roadless Area, 99 miles of road decommissioning, .47 miles of road construction on FS lands by Plum Creek, 2 miles of snowmachine trail construction, .24 miles of temporary road construction, 2.18 miles of road reconstruction, .68 miles of permanent road construction, and 4374 acres of prescribed burning.	DEIS Complete 5/02	September 2002	2003	Tim Charnon 283-7568
14	Timber Sale	South McSwede	T29N,R30W, Sections 28,29,32-34; T28N,R30W, Sections 1,2,9-15,22-27,33-36; T28N, R29W, Sections 7,8,18; T27N, R30W, Sections 4,5,9. 5975 CCF (2.45 MMBF). Includes 590 acres of precommercial thinning, 3 miles of temp road construction, private land access, and 9 miles of road decommissioning.	Analyzing Effects	January 2003	2003	Tim Charnon 283-7568
*	Silviculture	Tree Pruning and Thinning	Across Libby District. Whitepine pruning 1420 acres, 575 acres thinning.	Analyzing Effects	March 2002	2002	Tim Charnon 283-7568
15	Minerals	Prospect Hill	T30N, R31W, Sections 33,32,29. Mineral exploration. Includes opening a closed road, construction of less than 1 mile of road and the re-opening of two closed mine portals.	Deferred	January 2003	2003	Bobbie Lacklen 283-7518
16	Recreation	Re-Reg	T30N, R30W, Section 10. Adjacent to Highway 37 at the 8.7 mile post. Boat ramp, parking area and restroom construction. Existing ramp will be closed to vehicle traffic.	Decision Pending	September 2002	2004	Bobbie Lacklen 283-7518
17	Recreation	Bear Creek X-C Ski Trail	T29N, R31W, Section 13. Bear Creek cross country ski area. 1.5 miles of trail maintenance.	Notice of Decision 7/22/02	Complete	2002	Jon Jeresek 283-7525
18	Special Uses	Bear Lakes Access Request	T26N, R30W, Section 30. Silver Butte area. Livestock use of existing trail and 500 feet of associated trail construction accessible to livestock. Trail accesses private lands.	Decision Pending	September 2002	2002	Denise Beck 283-7504
19	Special Uses	Burrier Road Request	Included in Pipestone DEIS. Widening of 200 feet of existing road on FS lands.	DEIS Complete 5/02	September 2002	2003	Tim Charnon 283-7568

LIBBY RANGER DISTRICT, continued

MAP KEY	TYPE OF PROJECT	NAME OF PROJECT	LOCATION & PROJECT DESCRIPTION	NEPA STATUS	ANTICIPATED DECISION DATE	YEAR ACTIVITY TO START ON GROUND	CONTACT PERSON
20	Special Uses	Young Road Request	Included in Pipestone DEIS. Includes reconstruction of 1.2 miles of existing road on FS lands.	DEIS Complete 5/02	September 2002	2003	Tim Charnon 283-7568
21	Special Uses	Spring Creek Road Access	T32N, R28W, Section 5. Adjacent to Hwy 37 in Volcour Gulch area. Includes ¼ mile of road construction on FS land to access private land.	Decision Pending	September 2002	2002	Bobbie Lacklen 283-7518
22	Lands	Silver Cable	T28N, R31W, Sections 29,30,31,32 FS proposes to purchase 96 acres of private property located in Cable Creek drainage	Seeking Public Comment	January 2002		Mike Guthneck 283-7565

CABINET RANGER DISTRICT, 2693 Highway 200, Trout Creek, MT 59874 - Phone: 406-827-3533, Fax: 406-827-3203

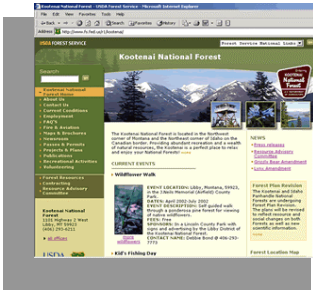
NEWSPAPER OF RECORD: DAILY INTER LAKE, Kalispell, MT

MAP KEY	TYPE OF PROJECT	NAME OF PROJECT	LOCATION & PROJECT DESCRIPTION	NEPA STATUS	ANTICIPATED DECISION DATE	YEAR ACTIVITY TO START ON GROUND	CONTACT PERSON
23	Timber Sale	Whitepine Creek	T22N, R32W, Section 4,5: T23N, R31W, Section 3-11, 14-24, 27-30: T23N, R32W, Section 1-3, 10-17, 20-29, 31-34: T24N, 31W, Section 31-33: T24N, R32W, Section 24-26, 35, 36. Whitepine Creek Drainage south of Trout Creek, MT. 33,000 CCF (15MMBF). Project includes up to 52 miles road decommissioning, Forest Plan amendments for management of old growth, open road densities and cavity nesting habitat. Includes 2 openings over 40 acres.	Notice of Decision 6/26/02	Complete	2003	John Gubel 827-0732
24	Timber Sale and Fuels	Fat Blue Eddy	T27N, R34W, Section 7-10, 15-18, 21-23, 24,25. Blue Creek and Big Eddy Creek drainages near Heron, MT. Fuel reduction in areas adjacent to private property, some timber harvest, precommercial thinning.	Seeking Public Comment	September 2003	2003	John Head 827-0738
*	Silviculture	Whitepine Pruning Project	Various plantations across district. 2800 acres. Branch pruning to reduce impacts from blister rust disease.	Notice of Decision 7/8/02	Complete	2002	Gene Newell 827-0727
*	Silviculture	Seed Production Area Maintenance	Various plantations across district. Miller Creek 42 acres, Government Mountain 30 acres, Burten 18 acres. Brush and small tree thinning, promote cone and crown growth.	Notice of Decision 7/8/02	Complete	2002	Peter Powers 827-0721
*	Silviculture	Vermilion Mistletoe Sanitation Project	Various plantations in the Vermilion River drainage 127 acres. Girdling and killing mistletoe infected larch in or near plantations to reduce infection of plantation trees and create snags for wildlife.	Notice of Decision 7/8/02	Complete	2002	Peter Powers 827-0721

MAP KEY	TYPE OF PROJECT	NAME OF PROJECT	LOCATION & PROJECT DESCRIPTION	NEPA STATUS	ANTICIPATED DECISION DATE	YEAR ACTIVITY TO START ON GROUND	CONTACT PERSON
*	Silviculture	Cabinet District Pre-commercial Thinning	Various locations across the District. 1139 acres. Thinning small trees and excess fuels from existing plantations.	Analysis completed	September 2002	2002	Gene Newell 827-0727
*	Fisheries	South Fork Bull River Watershed Restoration	T28N; R33W; Section 25. T27N; R32W; S9; PMM. South Fork Bull River Watershed	Notice of Decision 8/6/02	Complete	2002-2003	Doug Gruppenhoff 827-0741
25	Fuels	Green Mountain Fuel Reduction	T25N; R32W; Sections 1, 2, 11, 12. Green Mountain. Fuel reduction adjacent to private property with some timber harvest	Seeking Public Comment	November 2003	2003	Kurt Werst 827-0712
*	Special Uses	Special Use Permit Renewals	Various areas across district. Multiple permit renewals primarily for water systems.	Analyzing Effects	Fall 2002	2002	Bruce Haflich 827-07330
26	Land Exchange	Cox Land Exchange	T22N; R30W; Section 5(NFS), T23N; R31W; Section 11 (Private)	Seeking Public Comment	January 2003	2003	Bruce Haflich 827-07330
*	Recreation	Trailhead Enhancements	Various locations on District including Squaw Peak and Blacktail Trailheads.	Seeking Public Comment	January 2003	2003	Les Raynor 827-0720

KOOTENAI SUPERVISORS OFFICE, 1101 US Hwy 2 West, Libby, MT 59923 - Phone: 406-293-6211, Fax: 406-293-6418 **NEWSPAPER OF RECORD: DAILY INTER LAKE, Kalispell, MT**

MAP KEY	TYPE OF PROJECT	NAME OF PROJECT	LOCATION & PROJECT DESCRIPTION	NEPA STATUS	ANTICIPATED DECISION DATE	YEAR ACTIVITY TO START ON GROUND	CONTACT PERSON
27	Minerals	Rock Creek (Sterling Mine)	T26N, R3ection 2W. Includes Forest Plan amendments. Copper/silver mine near Noxon, MT.	Decision Withdrawn-Continuing Analysis	October 2002	2003	John McKay 283-7691
*	Forest Plan Amendment	Forest Plan Amendments for Motorized Access Management within the Selkirk/Cabinet-Yaak Grizzly Bear Recovery Zones	Portions of the Lolo, Idaho Panhandle and Kootenai National Forests. Motorized access management.	FEIS released 4/14/02	October 2002	2002	Kirsten Kaiser 283-7659
*	Forest Plan Amendment	Northern Rockies Lynx Amendment	18 National Forests in Regions 1, 2 and 4. Lynx management.	DEIS expected 10/02	December 2002	2002	John Haber 329-3399
*	Forest Plan Revision	Kootenai and Idaho Panhandle National Forests Forest Plan Revision	Forest-wide. Revision of Forest Plan management direction.	Seeking public comment until 12/1/02	2005	2005	Joe Krueger 283-7774



Go to www.fs.fed.us/r1/kootenai/ for information on recreational opportunities, current events, publications, contracting, fire, forest resources, press releases and lots more.

Check back regularly, as we continue to expand opportunities for public involvement on our website!

IF YOU **HAVE** PREVIOUSLY RESPONDED,
THERE IS **NO** NEED TO REPLY TO THIS REQUEST.

You will be removed from our “regular-mail” mailing list if we do not receive a response from you by October 1, 2002.

Please continue to send the SOPA to me via “regular mail.”

Name: _____
Organization: _____
Mail Address: _____
City: _____ State: ___ Zip _____ Phone: _____

Please send the SOPA to me electronically.

Name: _____
Organization: _____
Mail Address: _____
City: _____ State: ___ Zip _____ Phone: _____
E-Mail Address: _____

E-Mail addresses are easily misconstrued- please write legibly!