



File Code: 1950

Date: December 4, 2002

Welcome to the Winter 2002 edition of the quarterly Schedule of Proposed Actions (SOPA) for the Kootenai National Forest. Four times a year, this SOPA is updated, published and made available on our website (www.fs.fed.us/r1/kootenai).

We invite your active participation in project planning. Contributing your comments, suggestions, and site-specific information about these projects early in the planning process can help our Forest make better decisions.

Here is how the SOPA can be best used:

1. Look through the list of projects and decide what projects you would like to know more about.
2. Call the contact person and let them know you would like to be on the mailing list for the given project. The phone number for that person is on the SOPA.
3. Once you are placed on a project mailing list, you will then be notified about opportunities for public participation and you will receive information concerning that project as it is developed.

We will continue to provide this SOPA to you unless you ask us to remove your name from our mailing list. If you would like to save paper and postage, we will be happy to send you an e-mail when the new SOPA is available on our website.

If you have comments or suggestions on making this SOPA more useful, would like to receive the SOPA electronically, or have any questions, contact Kirsten Kaiser, Forest Environmental Coordinator, at 406-293-6211 or kkaiser@fs.fed.us.

Sincerely,

BOB CASTANEDA
Forest Supervisor

Enclosure

INFORMATION ABOUT THE QUARTERLY SCHEDULE OF PROPOSED ACTIONS (SOPA)

The enclosed SOPA provides information about projects for which we have a specific proposal and are in the process of analyzing, as directed by the National Environmental Policy Act (NEPA).

Projects on the SOPA are arranged in a table format and are sorted by Ranger District, by type of project, and by date expected for each decision for each project. There are several points in the planning process during which you can be the most helpful and influential, but exact steps and timing may vary depending on the type and complexity of the project. For example, the whole planning process may only take a few days for small, non-complex projects, or several years for large complex projects such as a major mining proposal. The enclosure labeled "Project Planning Process and Where You Fit In" describes these steps and identifies what you can do to be involved.

DEFINITIONS USED FOR THE SOPA

If you've received previous editions of this list you'll notice that some projects don't appear anymore. That's because we've finished the analysis, made the decision, and the appeal period (if applicable) has ended. In other cases, we've removed the projects from the list because we're unable to pursue them for various reasons (lack of funding, conflicts with other forest priorities, etc.). Please contact the person listed as the "contact" for a project anytime you have a question or would like to be included on the mailing list for the given project.

This list is not inclusive. Some projects may come up after publication that requires our immediate attention, and we may complete the decision document before the next edition.

At the top of each table we have listed the Ranger District, their address, and the "Newspaper of Record" (used by the District for legal notices of decision, and scoping of projects).

The following items describe the column headings and contents in the tables that follow.

MAP KEY: Identifies a number that goes with the attached small forest map to show the general location of the project.

TYPE OF PROJECT: Identifies the Resource Program area that's affected. Acronyms used include:

Mgmt – management

Exchg – Exchange

NAME OF PROJECT: Identifies the name of the environmental document. Acronyms used are:

EIS - Environmental Impact Statement

EA – Environmental Assessment

BPA – Bonneville Power Administration

OSR – Overstory Removal

ORV – Off Road Vehicle

Salv – Salvage

MMBF – Million board feet

LE – Land Exchange

MBF – Thousand board feet

CCF-Hundred cubic feet

RUP-Road Use Permit

LOCATION & PROJECT DESCRIPTION: Identifies both legal land description and the drainage or other identifying on-the-ground feature. If a project is located within an inventoried roadless area it is also noted here. Also included is a general description of the project, such as estimated timber volume, acres proposed for treatment, acres involved with a land exchange, etc.

Acronyms used are: T – Township

R – Range

S – Section

NEPA STATUS: Identifies where we are in the NEPA process. Acronyms used are:

NOI- Notice of Intent published in the Federal Register

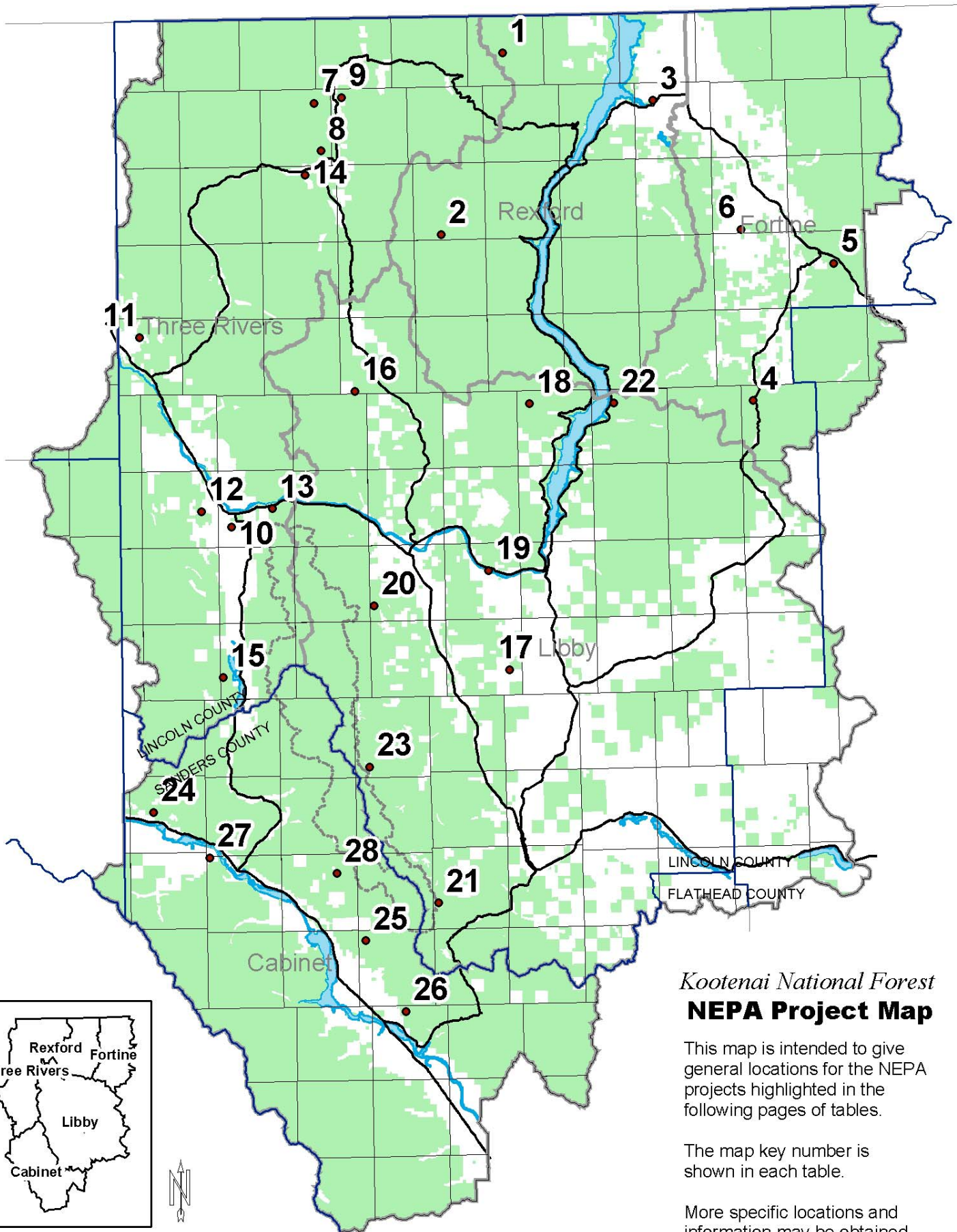
ANTICIPATED DECISION DATE: This is the best estimate of when the NEPA analysis will be completed. Sometimes we're not able to meet the date for various reasons but the schedule will be validated and updated each time we send it out.

YEAR ACTIVITY TO START ON THE GROUND: This is the best estimate of when ground disturbing activities would occur and/or contracts or permits would be offered.

CONTACT PERSON: This is the person at the Ranger District or Forest to contact for further information regarding the project.

THE PROJECT PLANNING PROCESS & WHERE YOU MIGHT FIT

ANALYSIS STEP	PARTICIPATION OPTIONS
Identify need for project – Forest Service, business, organization, or individual suggests a project	Bring need for a project to the attention of Forest Service
Develop detailed project proposal (Forest Service or other project proponent)	Develop project proposal
Scoping – solicit public comment on the proposal (how it might affect forest resources & uses; how the project could be done better). This defines the scope of environmental analysis needed and the range of alternatives that should be considered	Comment on proposal – suggest issues, concerns, alternatives or mitigation measures
Develop range of alternatives based on the issues raised during scoping. One alternative is to stay with the status quo (No Action)	Suggest variations to the original proposal
Initiate public comment process (scoping), which includes a 45-day comment period for Draft EIS’s and 30-day comment period for most other projects. A copy of the environmental document will be mailed to those who requested a copy and to those who have participated in the environmental analysis process. A legal notice, requesting comments on appealable projects, will be published in the <i>Daily Inter Lake</i> , Kalispell, MT, which is our newspaper of record (36 CFR 215.5)	Provide comments on the environmental analysis. See 36 CFR 215.6 for description of information to provide
Notice of appealable decisions will be published in the newspaper of record. Copies of the decision document will be sent to those who submitted comments on the proposed action either before or during the comment period identified above (36 CFR 215.9)	Review decision: exercise option to appeal, when applicable, through administrative process
Appeal period will be open for 45 days following legal notice of decision in the newspaper except if no one expressed interest and there is no change from the proposed action. (36 CFR 215.10)	File Notice of Appeal (see section 36 CFR 215.14 for contents of an appeal) Only those who commented through the process described above or expressed interest will be able to appeal. (36 CFR 215.11). NOTE: Persons interested in or potentially affected by an appeal may participate as an interested party (36 CFR 215.11 (2)(b)). Interested parties must submit written comments to the appeal reviewing officer within 15 days after close of the appeal filing period (36 CFR 215.13(e). The informal disposition meeting is open to the public and interested parties (36 CFR 215.16(c)).
Implement the project	Contribute labor, equipment or funding
Monitor & evaluate project results	Provide feedback on the project



Kootenai National Forest
NEPA Project Map

This map is intended to give general locations for the NEPA projects highlighted in the following pages of tables.

The map key number is shown in each table.

More specific locations and information may be obtained from the contact person.

DECEMBER 2002

MAP KEY	TYPE OF PROJECT	NAME OF PROJECT	LOCATION & PROJECT DESCRIPTION	NEPA STATUS	ANTICIPATED DECISION DATE	YEAR ACTIVITY TO START ON GROUND	CONTACT PERSON
1	Timber Sale, Fuels, Watershed Restoration	Young J	T37N, R29W. Young Creek drainage. Includes 390 acres; project-specific Forest Plan Amendment for open road density.	Notice of Decision 10/10/02	Completed	2003	Ron Komac 296-7130
2	Timber Sale, Fuels, Silviculture, Watershed Restoration	Lower Big Creek	T33-36N, R29-31W. Big Creek drainage including North Fork and South Fork of Big Creek. Approximately 3,625 acres of timber harvest and prescribed burning; 1,100 acres of underburning without harvest; road decommissioning, storage, and reconstruction; project-specific Forest Plan amendments; harvest openings greater than 40 acres.	Seeking public comment	July 2003	2004	Chris Fox 296-7155
3	Recreation	Koocanusa Drawdown	T36-37N, R27, 28W, T32N, R29W. Mouth of the Tobacco River, Sophie Bay, Mouth of Bristow Creek. Access and travel management within the Reservoir and the draw down area.	Developing Proposal	December 2002	2003	Cindy Hemry 296-7149

MAP KEY	TYPE OF PROJECT	NAME OF PROJECT	LOCATION & PROJECT DESCRIPTION	NEPA STATUS	ANTICIPATED DECISION DATE	YEAR ACTIVITY TO START ON GROUND	CONTACT PERSON
4	Timber Sale, Fuels, Watershed Restoration	Fortine	T33N, R26W, Sections 21-22, 27-29, 31-35; T32; T32N, R28W; Sections 3-11, 14-36; T32N, R27W; Sections 1-2, 11-14, 23-26; T31N, R26W; Sections 3-5, 8-10, 15, and 16; Fortine Watershed. Project includes timber harvest, prescribed burning, watershed restoration, and road decommissioning.	Developing Proposal	December 2003	2004	Joleen Dunham 882-8325
5	Recreation	North Dickey Lake Campground Well	T34N, R25W, Section 9. Installation of well and associated structures to provide water for North Dickey Lake Campground.	Seeking Public Comment	April 2003	2003	Marcy Butts 882-4451
6	Range	Loon Roberts Allotment Term Grazing Permit	T34N, R26W, Sections 11-15, 22-26; T34N, R26W, Sections 1-3; T35N, R26W, Sections 26, 33-35. Marl and Loon Lake areas, west of Fortine, MT.	Notice of Decision 10/03/02	Completed	2003	Guenter Heinz 882-8332

MAP KEY	TYPE OF PROJECT	NAME OF PROJECT	LOCATION	NEPA STATUS	ANTICIPATED DECISION DATE	YEAR ACTIVITY TO START ON GROUND	CONTACT PERSON
7	Timber Sales, Fuels Reduction, Silviculture	Garver	Portions of T36N, R32W; T36N, R31W; T37N, R32W; and T37N, R31W; within the West Fork Yaak, Pete Creek, and Yaak Face drainages. Includes prescribed burning in the West Fork Yaak Inventoried Roadless Area, changes to old growth designations.	DEIS completed. Public Comments due 12/2/02	January 2003	2003	Kathy Mohar 295-7426
8	Fuels Silviculture	Yaak Community Fuels	Portions of Section 30, T36N, R31W. Hazard tree removal and fuel reduction on 4 acres around the Yaak Community Hall, Yaak, MT.	Decision Memo pending	December 2002	2002	Jeff Stevenson 295-7477
9	Fuels Reduction	Upper Ford Fuels Reduction	Portions of Sections 6 and 7, T36N, R31W, near the Upper Ford Work Center, Yaak Valley, MT.	Analyzing effects	January 2003	2003	Ed Koberstein 295-7456
10	Fuels Reduction	Plateau	Portion of Section 20, T31N, R33W; near Wilderness Plateau Subdivision, Troy, MT.	Decision Memo pending	January 2003	2003	Steve Straley 295-7481
11	Fuels Reduction	Lime Cr. Fuels Reduction	Portion of Section 9, T33N, R34W, off Lime Cr. Rd.	Seeking public comment, analyzing effects	January 2003	2003	Miles Friend 295-7479
12	Recreation	Callahan Interpretative Trail Extension	Portion of Sections 13, 23, T31N, R34W from existing trail into the town of Troy, MT. Trail would be extended on the historic railroad grade across FS and Plum Cr. lands and tie into the Callahan Cr. Rd. (427) right of way.	Seeking public comment, analyzing effects	January 2003	2003	Mark Mason 295-7480
13	Recreation	Old Highway 2 Interpretative Trail Relocation - Hwy 56 Portal	Portion of Sections 13, 14, and 22, T31N, R33W. Re-route existing trail away from shooting area (Plum Cr. lands) and improve tread corridor (FS lands).	Seeking public comment, analyzing effects	January 2003	2003	Mark Mason 295-7480
14	Special Use Permit/Easement	Cool Creek Access	T35N, R32W, Sections 2, 3, 4. Across the Yaak River from Yaak, MT.	Analyzing effects	June 2003	2003	Dick Harlow 295-7432
15	Road Uses	Stanley Creek Access	Request for a RUP to haul 200 MBF of timber on FS. Rd. 4626 within portions of Section 35 and 36, T29N, R34W and portions of Section 6, T29N, R34W.	Analyzing effects	June 2003	2003	Dick Harlow 295-7432

MAP KEY	TYPE OF PROJECT	NAME OF PROJECT	LOCATION & PROJECT DESCRIPTION	NEPA STATUS	ANTICIPATED DECISION DATE	YEAR ACTIVITY TO START ON GROUND	CONTACT PERSON
16	Timber Sale, Fuels, Watershed Restoration	Pipestone	T34N, R32W, Section 36; T34N, R31W, Sections 11,14,15,21-36; T34N, R30W, Section1; T33N, R32W, Sections 1,12,23-5,36; T33N, R31W, Sections 1-36; T33N, R30W, Sections 18-20,29-33; T32N, R32W, Sections 1,12-13,24,25,36; T32N,R31W,Sections 1-36; T32N, R30W, Sections 5-10,15-21,29-32; T31N, R31W, Sections 1-22,29,30; T31N, R30W, Sections 4-9,17,18. Pipe Creek area. Includes Forest Plan ORD, VQO, movement corridors, and hiding cover amendments, openings greater than 40 acres, prescribed burning in the Gold Hill West Inventoried Roadless Area, 99 miles of road decommissioning, .47 miles of road construction on FS lands by Plum Creek, 2 miles of snowmachine trail construction, .24 miles of temporary road construction, 2.18 miles of road reconstruction, .68 miles of permanent road construction, and 4374 acres of prescribed burning.	DEIS Complete 5/02	February 2003	2003	Leslie Ferguson 283-7568
17	Timber Sale	South McSwede	T29N,R30W, Sections 28,29,32-34; T28N,R30W, Sections 1,2,9-15,22-27,33-36; T28N, R29W, Sections 7,8,18; T27N, R30W, Sections 4,5,9. Includes 590 acres of precommercial thinning, 3 miles of temporary road construction, private land access, and 9 miles of road decommissioning.	Analyzing Effects	August 2003	2003	Leslie Ferguson 283-7568
18	Timber Sale, Fuels	Bristow	T33N, R30W, Sections 35, 36; T33N, R29W, Sections 31, 32, 36; T33N, R28W, Sections 31; T32N, R30W, Sections 1, 2, 3, 11, 12, 21- 28; T32N, R29W, Sections 1-12, 14-17, 20-23, 27-28, 32-34; T31N, R30W, Section 11 and T31N, R29W, Sections 3-4, and 9, Jackson, Barron and Bristow Creeks. Includes 2315 acres of timber harvest, 1171 acres of fuel treatment, 1167 acres of precommercial thinning, 6 miles of temporary road construction, 3 miles of road decommissioning, Forest Plan ORD amendment and openings greater than 40 acres.	Developing Alternatives	August 2003	2003	Denise Beck 283-7504
*	Timber Sale	Districtwide Blowdown	Includes harvesting dead and down timber in various areas of Libby district involving special circumstances not included in the Forestwide Blowdown EA.	Developing Proposal	January 2003	2003	Denise Beck 283-7504
*	Silviculture	Tree Pruning and Thinning	Across Libby District. Whitepine pruning 1420 acres, 575 acres thinning.	Analyzing Effects	March 2003	2003	Leslie Ferguson 283-7568

LIBBY RANGER DISTRICT, continued

MAP KEY	TYPE OF PROJECT	NAME OF PROJECT	LOCATION & PROJECT DESCRIPTION	NEPA STATUS	ANTICIPATED DECISION DATE	YEAR ACTIVITY TO START ON GROUND	CONTACT PERSON
19	Recreation	Re-Reg	T30N, R30W, Section 10. Adjacent to Highway 37 at the 8.7 mile post. Boat ramp, parking area and restroom construction. Existing ramp will be closed to vehicle traffic.	Decision Pending	January 2003	2003	Bobbie Lacklen 283-7518
20	Minerals	Prospect Hill	T30N, R31W, Sections 33,32,29. Mineral exploration. Includes opening a closed road, construction of less than 1 mile of road and the re-opening of two closed mine portals.	Deferred	June 2003	2003	Bobbie Lacklen 283-7518
21	Special Uses	Bear Lakes Access Request	T26N, R30W, Section 30. Silver Butte area. Livestock use of existing trail and 500 feet of associated trail construction accessible to livestock. Trail accesses private lands.	Decision Pending	February 2003	2003	Denise Beck 283-7504
22	Special Uses	Spring Creek Road Access	T32N, R28W, Section 5. Adjacent to Hwy 37 in Volcour Gulch area. Includes ¼ mile of road construction on FS land to access private land.	Notice of Decision 10/02	Complete	2003	Bobbie Lacklen 283-7518
23	Lands	Silver Cable	T28N, R31W, Sections 29,30,31,32 FS proposes to purchase 96 acres of private property located in Cable Creek drainage	Seeking Public Comment	October 2003	2003	Malcolm Edwards 293 - 7773

CABINET RANGER DISTRICT, 2693 Highway 200, Trout Creek, MT 59874 - Phone: 406-827-3533, Fax: 406-827-3203

NEWSPAPER OF RECORD: DAILY INTER LAKE, Kalispell, MT

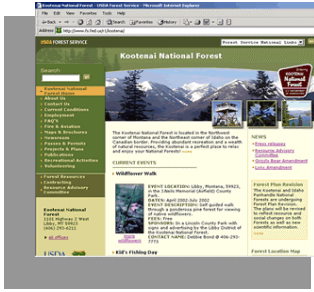
MAP KEY	TYPE OF PROJECT	NAME OF PROJECT	LOCATION & PROJECT DESCRIPTION	NEPA STATUS	ANTICIPATED DECISION DATE	YEAR ACTIVITY TO START ON GROUND	CONTACT PERSON
24	Timber Sale and Fuels	Fat Blue Eddy	T27N, R34W, Section 7-10, 15-18, 21-23, 24,25. Blue Creek and Big Eddy Creek drainages near Heron, MT. Fuel reduction in areas adjacent to private property, some timber harvest, precommercial thinning.	Seeking Public Comment	September 2003	2003	John Head 827-0738
*	Silviculture, Fuels	Cabinet District Pre-commercial Thinning	Various locations across the District. Thinning small trees and excess fuels from existing plantations.	Analyzing Effects	March 2003	2003	Gene Newell 827-0727
25	Fuels, Timber Sale	Green Mountain Fuel Reduction	T25N, R32W; Sections 1, 2, 11, 12. Green Mountain. Fuel reduction adjacent to private property with some timber harvest.	Seeking Public Comment	November 2003	2003	Kurt Werst 827-0712

CABINET RANGER DISTRICT, continued

*	Recreation	Trailhead Enhancements	Various locations across District, including Squaw Peak and Blacktail Trailheads.	Seeking Public Comment	January 2003	2003	Les Raynor 827-0720
*	Special Uses	Special Use Permit Renewals	Various areas across district. Multiple permit renewals primarily for water systems.	Varies	Varies	2002	Bruce Haflich 827-0730
26	Land Exchange	Cox Land Exchange	T22N, R30W, Section 5(NFS); T23N, R31W, Section 11 (Private).	Seeking Public Comment	January 2003	2003	Bruce Haflich 827-0730
27	Land Exchange	Noxon Admin Site Conveyance	T26N, R33W, Section 24. Adjacent to Noxon, MT townsite. National pilot authority to convey surplus government properties. Conveyance of the old Noxon ranger district station property and associated improvements (i.e. structures) to private ownership. 110 acres and structures.	Public Comment Period ends 12/2/02	October 2003	2005	Bruce Haflich 827-0730

KOOTENAI SUPERVISORS OFFICE, 1101 US Hwy 2 West, Libby, MT 59923 - Phone: 406-293-6211, Fax: 406-293-6418 **NEWSPAPER OF RECORD: DAILY INTER LAKE, Kalispell, MT**

MAP KEY	TYPE OF PROJECT	NAME OF PROJECT	LOCATION & PROJECT DESCRIPTION	NEPA STATUS	ANTICIPATED DECISION DATE	YEAR ACTIVITY TO START ON GROUND	CONTACT PERSON
28	Minerals	Rock Creek (Sterling Mine)	T26N, R32W. Includes Forest Plan amendments. Copper/silver mine near Noxon, MT.	Decision Withdrawn-Continuing Analysis	February 2003	2003	John McKay 283-7691
*	Forest Plan Amendment	Forest Plan Amendments for Motorized Access Management within the Selkirk/Cabinet-Yaak Grizzly Bear Recovery Zones	Portions of the Lolo, Idaho Panhandle and Kootenai National Forests. Motorized access management.	FEIS released 4/14/02	January 2003	2003	Kirsten Kaiser 283-7659
*	Forest Plan Amendment	Northern Rockies Lynx Amendment	18 National Forests in Regions 1, 2 and 4. Lynx management.	DEIS expected 1/03	2003	2003	John Haber 329-3399
*	Forest Plan Revision	Kootenai and Idaho Panhandle National Forests Forest Plan Revision	Forest-wide. Revision of Forest Plan management direction.	Seeking public comment until March 21, 2003	2005	2005	Joe Krueger 283-7774



Go to www.fs.fed.us/r1/kootenai/ for the current and past issues of the Quarterly Schedule of Proposed Actions(SOPA) and for information on recreational opportunities, current events, publications, contracting, fire, forest resources, press releases and lots more.

Check back regularly, as we continue to expand opportunities for public involvement on our website!

The U.S. Department of Agriculture (USDA) prohibits discrimination in its programs on the basis of race, color, national origin, sex, religion, age, disability, political beliefs, sexual orientation, or marital or family status. (Not all prohibited bases apply to all programs.) Persons with disabilities who require alternative means for communication of program information (Braille, large print, audiotape, etc.) should contact USDA's TARGET Center at 202-720-2600 (voice and TDD).

To file a complaint of discrimination, write USDA, Director, Office of Civil Rights, Room 326-W, Whitten Building, 1400 Independence Avenue SW, Washington, DC 20250-9410, or call 202-720- 5964 (voice or TDD). USDA Forest Service is an equal opportunity provider and employer.



KOOTENAI NATIONAL FOREST
1101 U.S. Highway 2 West
Libby MT 59923