



File Code: 1950

Date: June 14, 2004

Welcome to the Summer 2004 edition of the quarterly Schedule of Proposed Actions (SOPA) for the Kootenai National Forest. Four times a year, this SOPA is updated, published and made available on our website (www.fs.fed.us/r1/kootenai).

We invite your active participation in project planning. Contributing your comments, suggestions, and site-specific information about these projects early in the planning process can help our Forest make better decisions.

Here is how the SOPA can be best used:

1. Look through the list of projects and decide what projects you would like to know more about.
2. Call the contact person and let them know you would like to be on the mailing list for the given project. The phone number for that person is on the SOPA.
3. Once you are placed on a project mailing list, you will then be notified about opportunities for public participation and you will receive information concerning that project as it is developed.

We will continue to provide this SOPA to you unless you ask us to remove your name from our mailing list. If you would like to save paper and postage, we will be happy to send you an e-mail when the new SOPA is available on our website.

In the Fall of 2004 our forest will join all forests across the country in contributing to a national database identifying projects and disclosing project status. The Kootenai will continue to publish a quarterly Schedule of Proposed Actions (SOPA) on our Forest, which will be posted on our website and will be mailed to those who prefer paper copies.

If you have comments or suggestions on making this SOPA more useful, would like to receive the SOPA electronically, or have any questions, contact Kirsten Kaiser, Forest Environmental Coordinator, at 406-293-6211 or kkaiser@fs.fed.us.

Sincerely,

BOB CASTANEDA
Forest Supervisor

Enclosure

INFORMATION ABOUT THE QUARTERLY SCHEDULE OF PROPOSED ACTIONS (SOPA)

The enclosed SOPA provides information about projects for which we have a specific proposal and are in the process of analyzing, as directed by the National Environmental Policy Act (NEPA).

Projects on the SOPA are arranged in a table format and are sorted by Ranger District, by type of project, and by date expected for each decision for each project. There are several points in the planning process during which you can be the most helpful and influential, but exact steps and timing may vary depending on the type and complexity of the project. For example, the whole planning process may only take a few days for small, non-complex projects, or several years for large complex projects such as a major mining proposal. The enclosure labeled "Project Planning Process and Where You Fit In" describes these steps and identifies what you can do to be involved.

DEFINITIONS USED FOR THE SOPA

If you've received previous editions of this list you'll notice that some projects don't appear anymore. That's because we've finished the analysis, made the decision, and the appeal period (if applicable) has ended. In other cases, we've removed the projects from the list because we're unable to pursue them for various reasons (lack of funding, conflicts with other forest priorities, etc.). Please contact the person listed as the "contact" for a project anytime you have a question or would like to be included on the mailing list for the given project.

This list is not inclusive. Some projects may come up after publication that requires our immediate attention, and we may complete the decision document before the next edition.

At the top of each table we have listed the Ranger District, their address, and the "Newspaper of Record" (used by the District for legal notices of decision, and scoping of projects).

The following items describe the column headings and contents in the tables that follow.

MAP KEY: Identifies a number that goes with the attached small forest map to show the general location of the project.

TYPE OF PROJECT: Identifies the Resource Program area that's affected. Acronyms used include:

Mgmt – management

Exchg – Exchange

NAME OF PROJECT: Identifies the name of the environmental document. Acronyms used are:

EIS - Environmental Impact Statement

EA – Environmental Assessment

BPA – Bonneville Power Administration

OSR – Overstory Removal

ORV – Off Road Vehicle

Salv – Salvage

MMBF – Million board feet

LE – Land Exchange

MBF – Thousand board feet

CCF - Hundred cubic feet

RUP - Road Use Permit

ROW – Right of Way

ORD- Open Road Density

LOCATION & PROJECT DESCRIPTION: Identifies both legal land description and the drainage or other identifying on-the-ground feature. If a project is located within an inventoried roadless area it is also noted here. Also included is a general description of the project, such as estimated timber volume, acres proposed for treatment, acres involved with a land exchange, etc.

Acronyms used are: T – Township

R – Range

S – Section

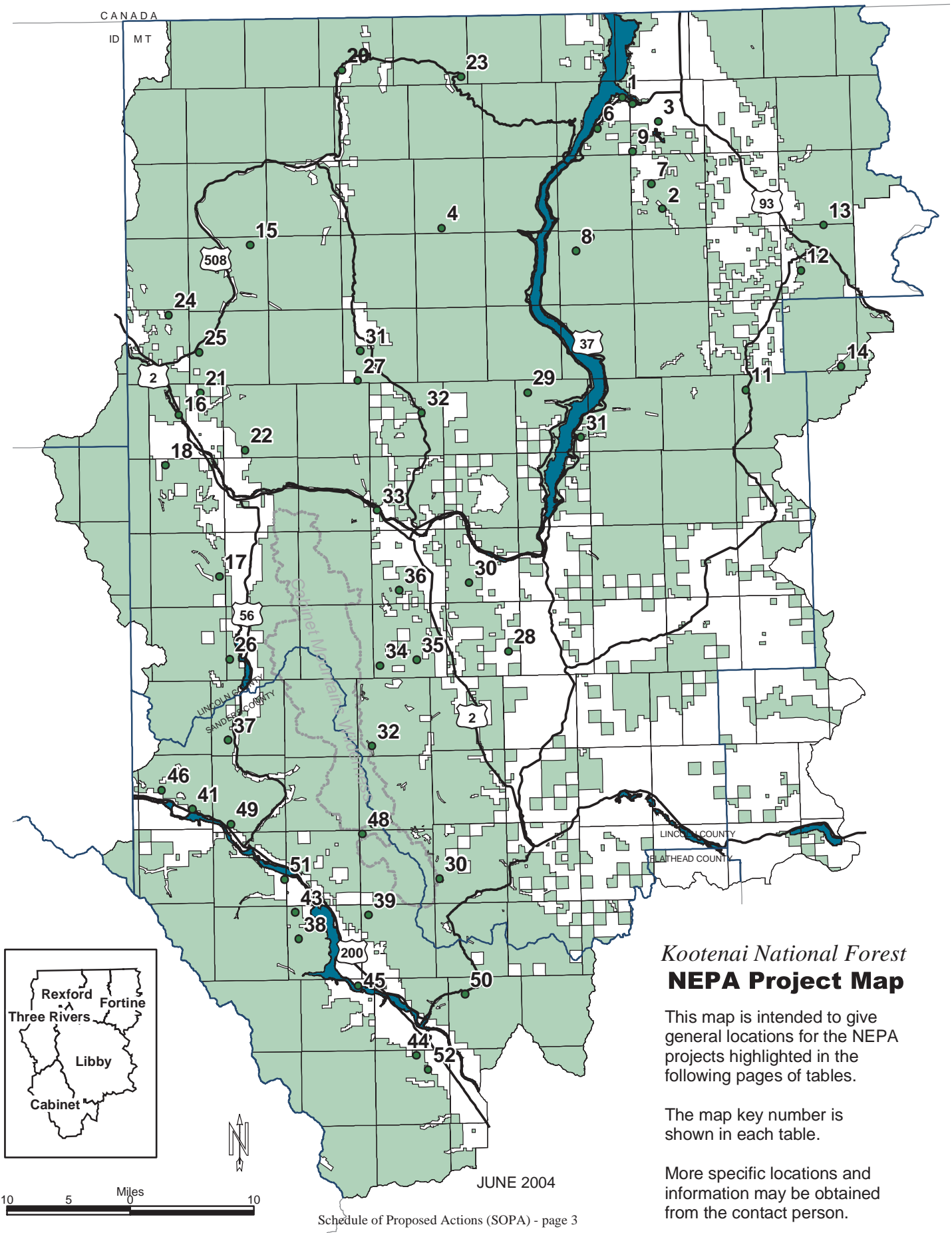
NEPA STATUS: Identifies where we are in the NEPA process. Acronyms used are:

NOI- Notice of Intent published in the Federal Register

ANTICIPATED DECISION DATE: This is the best estimate of when the NEPA analysis will be completed. Sometimes we're not able to meet the date for various reasons but the schedule will be validated and updated each time we send it out.

YEAR ACTIVITY TO START ON THE GROUND: This is the best estimate of when ground disturbing activities would occur and/or contracts or permits would be offered.

CONTACT PERSON: This is the person at the Ranger District or Forest to contact for further information regarding the project.



Kootenai National Forest
NEPA Project Map

This map is intended to give general locations for the NEPA projects highlighted in the following pages of tables.

The map key number is shown in each table.

More specific locations and information may be obtained from the contact person.

MAP KEY	TYPE OF PROJECT	NAME OF PROJECT	LOCATION & PROJECT DESCRIPTION	NEPA STATUS	ANTICIPATED DECISION DATE	YEAR ACTIVITY TO START ON GROUND	CONTACT PERSON
1	Timber Sale/ Fuels	Water Tank Timber Sale	T36N, R28W, Section 12. Project would reduce ground and ladder fuel accumulations on about 20 acres adjacent to private lands through selective timber harvest. Proposed as Categorical Exclusion #12.	Developing Proposal	June 2004	2004	Ron Komac 296-2536
2	Timber Sale/ Fuels	Cooks Spur Timber Sale	T35N, R27W, Section 33. Project would treat approximately 63 acres. Project would reduce ground and ladder fuel accumulations adjacent to private lands through selective timber harvest. Proposed as Categorical Exclusion #12.	Developing Proposal	June 2004	2004	Ron Komac 296-2536
3	Fuels, Timber Sales	Lowest Pinkham Hazardous Fuels Reduction	T36N, R 27W. Pinkham Creek drainage. Approximately 875 acres of commercial thinning and prescribed burning; 109 acres of precommercial thinning and underburning; approximately 1,029 of underburning only. Proposed as Categorical Exclusion #10.	Developing Proposal	June 2004	2004	Megan Strom 296-2536
4	Timber Sales, Fuels, Silviculture, Watershed Restoration	Lower Big Creek	T33-36N, R29-31W. Big Creek drainage including North Fork and South Fork of Big Creek. Approximately 3,625 acres of timber harvest and prescribed burning; 1,100 acres of underburning without harvest; road decommissioning, storage, and reconstruction; project-specific Forest Plan amendments for hiding cover and movement corridors; harvest openings greater than 40 acres.	Draft EIS Released for Public Comment 3/10/04	June 2004	2004	Chris Fox 296-7155
5	Timber Sales, Fuels, Silviculture, Watershed Restoration	McSutton	T32-35N, R 27-29W. Sutton Creek, McGuire Creek, and Temmle Creek drainages. Approximately 6,600 acres of timber harvest and prescribed burning; 1,100 acres of underburning without harvest; road decommissioning, storage, and reconstruction; project-specific Forest Plan amendments for hiding cover, open road densities and movement corridors; and harvest openings greater than 40 acres.	Analyzing Effects	September 2004	2005	Chris Fox 296-7155
*	Special Use	Interbel Telephone Company	Renewal of existing permits for buried telephone lines on the Rexford and Fortine Ranger Districts.	Deferred			Eric Heyn 296-2536
6	Special Use	Town of Rexford Waterline and Sewage Lagoon Permit	T36N, R28W, Section 22. Rexford townsite area. Renewal of existing permit for a water transmission line and sewage lagoon on approximately 8 acres. Includes the upgrade of a 400 foot water pipe.	Decision Pending	July 2004	2004	Eric Heyn 296-2536
7	Special Use	Johnson Special Use Road Permit	T35N, R27W. Request submitted for access on Forest Service Road # 7912. Road is approximately 3.5 miles.	Decision Pending	July 2004	2004	Eric Heyn 296-2536
8	Recreation	Lower Inch McGuire Hiking Trail	T34N, R28W, Sections 6, 8, 16, 21. Inch Mtn-Flat Creek area. Work on this non-motorized trail includes reestablishment of trail tread width, placement of erosion control barriers and trail alignment for approximately 6 miles.	Analyzing Effects	July 2004	2004	Eric Heyn 296-2536
9	Recreation	Pinkham Falls Hiking Trail	T36N, R27W, Section 31. Pinkham Creek area. Establishing non-motorized trail over former logging skid trails and placement of a new trail segment for approximately 900 feet.	Analyzing Effects	July 2004	2004	Eric Heyn 296-2536
10	Recreation	Rails to Trails Hiking Trail	T36N, R27W, Section 7. Tobacco Bay area. Maintenance of a non-motorized hiking trail for approximately 1/8 mile. Project Modified to be routine maintenance only.	Dropped			Eric Heyn 296-2536

MAP KEY	TYPE OF PROJECT	NAME OF PROJECT	LOCATION & PROJECT DESCRIPTION	NEPA STATUS	ANTICIPATED DECISION DATE	YEAR ACTIVITY TO START ON GROUND	CONTACT PERSON
11	Timber Sale, Fuels, Watershed Restoration	Fortine	T33N, R26W; Sections 21-22, 27-29, 31-35; T32, T32N, R28W; Sections 3-11, 14-36; T32N, R27W; Sections 1-2, 11-14, 23-26; T31N, R26W; Sections 3-5, 8-10, 15, and 16; Fortine Watershed. Project includes timber harvest, prescribed burning, watershed restoration, and road decommissioning.	Draft EIS Completed 3/04 Decision Pending	July 2004	2004	Joleen Dunham 882-8325
12	Fuels, Timber Sale, Watershed Restoration	Trego Healthy Forest Restoration	T32N, R26W; T33N, R25W; T33N, R26W; T34N, R25W; and T34N, R26W. Project may include ecosystem burning, thinning, intermediate timber harvest, regeneration harvest, BMP improvements to roads, and/or stream restoration.	Developing Proposal	February 2005	2005	Joleen Dunham 882-8325
13	Fuels Reduction	Gibraltar Fuels	T36N, R25W; and T35N, R25W. Project would mechanically reduce fuels (thinning, piling, and burning) on approximately 1,000 acres. In addition, approximately 2,300 acres would be prescribed burned. Proposed as Categorical Exclusion #10.	Developing Proposal	August 2004	2004	Ed Ferruzzi 882-8328
14	Timber Sale	Sunny Slopes	T32N, R25; T32N, R26W; T33N, R24; and T33N, R25W. Project would salvage beetle infested and dead Douglas-fir on approximately 250 acres. Proposed as Categorical Exclusion #14.	Developing Proposal	July 2004	2004	Joleen Dunham 882-8325
*	Special Uses	Special Use Permit Renewals	Various areas across the district. Multiple permit renewals.	Analyzing Effects	July 2004	2004	Marcy Butts 882-8341

MAP KEY	TYPE OF PROJECT	NAME OF PROJECT	LOCATION	NEPA STATUS	ANTICIPATED DECISION DATE	YEAR ACTIVITY TO START ON GROUND	CONTACT PERSON
15	Timber Sale	Dutch Oven	Portions of Sections 2, 3, and 35, T34N, R33W, in the Burnt Cr. drainage. Proposed as Categorical Exclusion # 13. Approximately 90 acres of timber harvest.	Analyzing Effects	June 2004	2004	Ed Koberstein 295-7456
16	Timber Sale	Highway 2 Lodgepole Thinning	Portion of Section 16, T32N, R34W. Proposed as Categorical Exclusion #12 and #14. Approximately 30 acres of timber harvest.	Seeking Public Comment	August 2004	2004	Ed Koberstein 295-7456
17	Timber Sale	Keeler Bottoms	Portion of Section 24, T30N, R34W in the Keeler Cr. drainage. Proposed as Categorical Exclusion #12 and #14. Approximately 100 acres of timber harvest.	Seeking Public Comment	July 2004	2004	Ed Koberstein 295-7456
18	Timber Sales, Fuels, Silviculture, Watershed Rehabilitation	West Troy	Portions of T32N, R34W; T32N, R35W; Lincoln Co., MT; T58N, R3E; T59N, R2E; T59N, R3E; Bommer Co., ID; and T60N, R3E, Boundary Co., ID. Callahan Creek, Brush Creek, Ruby Creek, and Star Creek are the major drainages. Activities include managing vegetative conditions suitable for a fire-dependent ecosystem, fuels reduction, improving conditions in old growth habitat, pre-commercial thinning, and watershed rehabilitation including road decommissioning. Approximately 850 acres of timber harvest.	Decision Signed 6/11/04	Completed	2004	Jim Benedict 295-7453 Steve Straley 295-7481

THREE RIVERS RANGER DISTRICT, continued

MAP KEY	TYPE OF PROJECT	NAME OF PROJECT	LOCATION	NEPA STATUS	ANTICIPATED DECISION DATE	YEAR ACTIVITY TO START ON GROUND	CONTACT PERSON
19	Timber Sales, Fuels, Silviculture, Watershed Rehabilitation	Northeast Yaak	Portions of R29W-R32W, T37N-T36N, northeast of the town of Yaak, Montana. Activities may include timber harvest, fuels reduction, prescribed burning, pre-commercial thinning, and watershed rehabilitation.	Developing Proposal	2005	2005	Eric Dickinson 295-7455
20	Fuels Reduction	Obermeyer Hazardous Fuels Reduction	Portions of Sections 2-5, 9-11, and 13, T35N, R32W, near the town of Yaak, Montana. Expected to be proposed as Categorical Exclusion #10. Maximum of 1000 acres treated mechanically.	Developing Proposal	2005	2005	Jeff Stevenson 295-7477
21	Recreation Maintenance, Fire, Timber Sale	Yaak Mtn. Lookout	Portion of Section 2, T32N, R34W, Yaak Mtn. Lookout maintenance includes 12 acres of timber harvest and fuels reduction.	Analyzing Effects	June 2004	2004	Mark Mason 295-7480
22	Watershed Restoration, Fisheries	O'Brien Creek Stream Restoration	Portion of Section 32, T32N, R33W. Stream stabilization to improve stream conditions and aquatic habitat.	Decision Pending	July 2004	2004	Amee Rief 295-7422
23	Watershed Restoration	Dodge Summit Road to Trail	Portion of Section 36, T37N, R30W on old Dodge Summit Road. Watershed improvement work. Yaak Headwaters Group Partnership.	Analyzing Effects	June 2004	2004	Mark Natale 295-7431
24	Minerals	Black Diamond Mine Plan of Operations	Section 2, T33N, R34W, Pine Cr. drainage. Request for access to Black Diamond Mine to sample ore material.	Analyzing Effects	June 2004	2004	Dick Harlow 295-7432
25	Minerals	Snipetown Plan of Operations	Section 19, T33N, R33W, lower Yaak River canyon. Proposal for panning and dredging instream gravels and gravel bars along the Yaak River.	Seeking Public Comment	2005	2005	Dick Harlow 295-7432
26	Road Use	Stanley Creek Road Access	Request for a RUP to haul 200 MBF of timber on FS. Rd. 4626 within portions of Sections 35 and 36, T29N, R34W and portions of Section 6, T29N, R34W.	Analyzing Effects	2004	2004	Dick Harlow 295-7432

MAP KEY	TYPE OF PROJECT	NAME OF PROJECT	LOCATION	NEPA STATUS	ANTICIPATED DECISION DATE	YEAR ACTIVITY TO START ON GROUND	CONTACT PERSON
27	Timber Sale, Fuels, Watershed Restoration	Pipestone	T34N, R32W, Section 36; T34N, R31W, Sections 11,14,15,21-36; T34N, R30W, Section 1; T33N, R32W, Sections 1,12,23-5,36; T33N, R31W, Sections 1-36; T33N, R30W, Sections 18-20,29-33; T32N, R32W, Sections 1-12,13,24,25,36; T32N, R31W, Sections 1-36; T32N, R30W, Sections 5-10,15-21,29-32; T31N, R31W, Sections 1-22,29,30; T31N, R30W, Sections 4-9,17,18. Pipe Creek area. Includes Forest Plan ORD, VQO, movement corridors, and hiding cover amendments, openings greater than 40 acres, prescribed burning in the Gold Hill West Inventoried Roadless Area, 99 miles of road decommissioning, .47 miles of road construction on FS lands by Plum Creek, 2 miles of snowmachine trail construction, .24 miles of temporary road construction, 2.18 miles of road reconstruction, .68 miles of permanent road construction, and 4374 acres of prescribed burning.	Decision Signed 6/2/2004	Completed	2004	Leslie Ferguson 283-7568
28	Timber Sale, Fuels, Watershed Restoration	South McSwede	T29N, R30W, Sections 28,29,32-34; T28N, R30W, Sections 1,2,9-15,22-27,33-36; T28N, R29W, Sections 7,8,18; T27N, R30W, Sections 4,5,9. Includes 709 acres of commercial timber harvest, 456 acres of natural fuel reduction, 550 acres of precommercial thinning, 3 miles of temporary road construction, private land access, 5 miles of road decommissioning, 26 miles of road storage, 47 miles of road repair and BMP implementation, and 5 miles of trail construction. Forest Plan amendment for open road densities.	Decision Signed 6/16/04	Completed	2004	Leslie Ferguson 283-7568
29	Timber Sale, Fuels	Bristow	T33N, R30W, Sections 35, 36; T33N, R29W, Sections 31, 32, 36; T33N, R28W, Sections 31; T32N, R30W, Sections 1, 2, 3, 11, 12, 21-28; T32N, R29W, Sections 1-12, 14-17, 20-23, 27-28, 32-34; T31N, R30W, Section 11 and T31N, R29W, Sections 3-4, and 9, Jackson, Barron and Bristow Creeks. Includes 1643 acres of timber harvest, 1526 acres of fuel treatment, 1064 acres of precommercial thinning, 5 miles of temporary road construction, 3 miles of road decommissioning, Forest Plan amendments for open road densities and openings greater than 40 acres.	Decision Signed 6/16/04	Completed	2004	Denise Beck 283-7504
30	Fuels	Farm To Market Fuels (Formerly North McSwede Interface)	T30N, R30W, Sections 19, 30, 31 and T29N, R30W Sections 6, 7, 18, Swede Mtn. & Williams Gulch area. Includes 1000 acres of fuel reduction in the urban interface and prescribed burning adjacent to the Libby airport (all sides) to reduce the encroachment of trees moving into the flight path.	Seeking Public Comment/ Analyzing Effects	June 2004	2004	Nikia Hernandez 283-7564
31	Special Uses	Tungsten Holdings Watland Access	T32N, R28W, Section 30. Road Permit authorizing 120' of new road across federal lands for residential access.	Decision Pending	July 2004	2004	Mark Petersen 283-7593
32	Special Uses	Burrier Road Access	T32N, R30W, Section 14. Road Permit across federal lands on new road.	Decision Pending	July 2004	2004	Mark Petersen 283-7593
33	Special Uses	Turner Mtn. Ski Area Improvements	T33N, R31W, Section 20, Turner Mtn. Ski area. Improvements may include septic installation and access road realignment and improvement.	Decision Pending	July 2004	2004	Leslie Ferguson 283-7568

LIBBY RANGER DISTRICT, continued

MAP KEY	TYPE OF PROJECT	NAME OF PROJECT	LOCATION	NEPA STATUS	ANTICIPATED DECISION DATE	YEAR ACTIVITY TO START ON GROUND	CONTACT PERSON
34	Special Uses	Bear Lakes Access Request	T26N, R30W, Section 30, Silver Butte area. Livestock use of existing trail and 500 feet of associated trail construction accessible to livestock. Trail accesses private lands.	Analyzing Effects	August 2004	2004	Denise Beck 283-7504
*	Special Uses	Special Use Permit Renewals	Twelve Special Use Permits on the Libby District to be renewed.	Decisions Pending	September 2004	2004	Mark Petersen 283-7593
35	Lands	Silver Cable	T28N, R31W, Sections 29, 30, 31, 32. FS proposes to purchase 96 acres of private property located in Cable Creek drainage.	Decision Pending	October 2004	2004	Malcolm Edwards 293-7773
36	Lands	Small Tracts Act Projects	T31N, R32W, Sections 24 AND T31N, R32W, Sections 13, 24. FS proposes to sell approximately ¼ acre and 4.5 acres to adjoining landowners.	Decision Pending	October 2004	2004	Mark Petersen 283-7593
37	Lands	Beebe Easement	T29N, R31W, Sections 30 and 31. Road Easement. Proponent would grant reciprocal rights to FS on same road.	Decision Pending	November 2004	2004	Mark Petersen 283-7593
38	Minerals	Cherry Creek Trenching	T29N, R31W, Section 27. Northwest Montana Gold Prospectors propose to excavate trenches to explore for placer gold adjacent to Cherry Creek.	Decision Signed 5/27/04	Completed	2004	Bobbie Laeklen 293-7773
39	Minerals	Prospect Hill	T30N, R31W, Sections 33,32,29. Mineral exploration. Includes opening a closed road, construction of less than 1 mile of road and the re-opening of two closed mine portals.	Seeking Public Comment	July 2005	2005	Bobbie Laeklen 283-7518

CABINET RANGER DISTRICT, 2693 Highway 200, Trout Creek, MT 59874 - Phone: 406-827-3533, Fax: 406-827-3203
DISTRICT NEPA COORDINATOR: JOHN HEAD

NEWSPAPER OF RECORD: DAILY INTER LAKE, Kalispell, MT

MAP KEY	TYPE OF PROJECT	NAME OF PROJECT	LOCATION & PROJECT DESCRIPTION	NEPA STATUS	ANTICIPATED DECISION DATE	YEAR ACTIVITY TO START ON GROUND	CONTACT PERSON
40	Fuels, Timber Sale	Dry Bench Emergency Helibase	T28N; R33W; S29. Dry Fork Bench. Construction of a helicopter landing/service area for emergency and fire suppression use. Existing roads would be brushed and bladed. Administrative use only post-construction.	Deferred			Kurt Werst 827-0712
41	Fuels, Timber Sale	Minton Pass Fir Thinning	T24N, R32W; Sections 19 & 20. Near Minton Peak, 7 miles west of Trout Creek, MT. Proposed as Categorical Exclusion #12.	Decision Signed 6/03/04	Completed	2004	Dave Clay 827-0732
42	Fuels, Timber Sale	Green Mountain Fuel Reduction	T25N, R32W, Sections 1, 2, 11, 12. Green Mountain area. Fuels reduction adjacent to private property with some timber harvest; 645 acres of commercial thinning and 800 acres of natural fuel burning.	EA Signed 4/22/03	July 2004	2004	Kurt Werst 827-0712
43	Fuels, Timber Sale	Back 40 Fuel Reduction	T24N; R31W; Section 6. Cabinet Ranger District Administrative Site, near Trout Creek, MT. Thinning of timber and reduction of woody fuels, using tractor logging; approx. 150 acres. Fuels would be piled and burned.	Seeking Public Comment	July 2004	2004	Kurt Werst 827-0712
44	Fuels, Timber Sale	2292 Timber Sale	T27N; R34W; S22, 25 & 26. Near Heron, MT. Salvage of insect and disease damaged trees, and fuel reduction on approx. 30 acres.	Deferred			John Gubel 827-0732

CABINET RANGER DISTRICT, continued

MAP KEY	TYPE OF PROJECT	NAME OF PROJECT	LOCATION & PROJECT DESCRIPTION	NEPA STATUS	ANTICIPATED DECISION DATE	YEAR ACTIVITY TO START ON GROUND	CONTACT PERSON
45	Fuels, Timber Sale	McKay Flats West Fuel Reduction	T26N; R32W; Sections 33, 32. Adjacent to State Hwy 200, near Noxon Rapids dam development site. Prescribed burning and thinning of stands to improve stand health and reduce fuels, on approx. 200 acres.	Seeking Public Comment	August 2004	2005	Kurt Weirst 827-0712
46	Fuels, Timber Sale	Dead Beaver Roadside Salvage	T22N; R31W; Sections 11-14. Roadside salvage of dead and dying trees along Road #301, approx. 12 miles SE of Trout Creek, MT.	Analyzing Effects	June 2004	2004	John Gubel 827-0732
47	Fuels, Timber Sale	Snowshoe	T23N; R31W; Section 3. Four miles SE of Trout Creek, MT. Commercial thinning of dense stand of trees to improve stand health, on approx. 50 acres.	Seeking Public Comment	July 2004	2004	John Gubel 827-0732
48	Fuels, Timber Sale	Rail View Salvage	T24N; R32W; Section 2. Three miles NW of Trout Creek, MT. Commercial thinning to improve stand health, on approx. 50 acres.	Seeking Public Comment	July 2004	2004	John Gubel 827-0732
49	Fuels, Timber Sale	Fat Blue Eddy	T27N, R34W, Sections 7-10, 15-18, 21-23, 24, 25; Blue Creek and Big Eddy Creek drainages near Heron, MT. Fuel reduction in areas adjacent to private property, some timber harvest, pre-commercial thinning.	Developing Proposal	December 2004	2005	John Head 827-0738
50	Recreation	Trail #935 Bridge Removal	T27N; R31W; Section 32. Existing bridge would be removed and replaced with a low water ford.	Seeking Public Comment	June 2004	2004	Bruce Haflich 827-0730
51	Recreation	Rock Creek Bridge Replacement	T26N; R31W; Section 6. Rock Creek Trail #935. Existing bridge would be removed and replaced.	Seeking Public Comment	June 2004	2004	Bruce Haflich 827-0730
52	Special Uses	Boar's Breath Small Tract Act	T27N, R33W; Section 32. 1.5 miles NW of Hwy 200 & 56 junction. Proposal is to sell approx. 1.3 acres of isolated exemption strip land to adjacent landowners under Small Tract Act authority.	Deferred	2005	2005	Bruce Haflich 827-0730
53	Special Uses	Carl E #3 Mining	T24N; R30W; Section 8. Vermilion River drainage. Small mining claim. Small exploration pits at least 500 from live water, with subsequent reclamation.	Decision Pending	June 2004	2004	Bruce Haflich 827-0730
*	Special Uses	AVISTA Power Lines Permit Renewal	Renewal for all AVISTA powerlines on Forest Service lands within Cabinet District and the Idaho Panhandle National Forest	Seeking public comment	October 2004	2004	Bruce Haflich 827-0730
54	Land Conveyance	Noxon Admin Site Conveyance	T26N, R33W, Section 24. Adjacent to Noxon, MT town site. National pilot authority to convey surplus government properties. Conveyance of the old Noxon Ranger District station property and associated improvements (i.e. structures) to private ownership. 110 acres.	Decision Pending	June 2004	2004	Bruce Haflich 827-0730
55	Land Exchange	Cox Land Exchange	T22N, R30W, Section 5 (NFS); T23N, R31W, Section 11; (Private). Exchange of NFS lands (40) for 61 acres of private land.	Analyzing Effects	July 2004	2004	Bruce Haflich 827-0730

MAP KEY	TYPE OF PROJECT	NAME OF PROJECT	LOCATION & PROJECT DESCRIPTION	NEPA STATUS	ANTICIPATED DECISION DATE	YEAR ACTIVITY TO START ON GROUND	CONTACT PERSON
*	Forest Plan Amendment	Forest Plan Amendments for Motorized Access Management within the Selkirk/Cabinet-Yaak Grizzly Bear Recovery Zones	Portions of the Lolo, Idaho Panhandle and Kootenai National Forests. Motorized access management.	Decision Signed 3/19/04	Completed	2004	Kirsten Kaiser 283-7659
*	Forest Plan Amendment	Northern Rockies Lynx Amendment	18 National Forests in Regions 1, 2 and 4. Lynx management.	DEIS Complete 1/5/04	2004	2004	Joan Dickerson 329-3314
*	Forest Plan Revision	Kootenai and Idaho Panhandle National Forests Forest Plan Revision	Forest-wide. Revision of Forest Plan management direction.	DEIS Expected 12/04	2005	2005	Kirsten Kaiser 283-7659
*	Noxious Weed Treatment	Kootenai NF Noxious Weed Management EIS	Forestwide EIS: Management of Noxious Weeds.	Seeking Public Comment	2005	2005	Louis Kuennen 283-7690



Go to www.fs.fed.us/r1/kootenai/ for the current and past issues of the Quarterly Schedule of Proposed Actions(SOPA) and for information on recreational opportunities, current events, publications, contracting, fire, forest resources, press releases and lots more.

Check back regularly, as we continue to expand opportunities for public involvement on our website!

The U.S. Department of Agriculture (USDA) prohibits discrimination in its programs on the basis of race, color, national origin, sex, religion, age, disability, political beliefs, sexual orientation, or marital or family status. (Not all prohibited bases apply to all programs.) Persons with disabilities who require alternative means for communication of program information (Braille, large print, audiotape, etc.) should contact USDA's TARGET Center at 202-720-2600 (voice and TDD).

To file a complaint of discrimination, write USDA, Director, Office of Civil Rights, Room 326-W, Whitten Building, 1400 Independence Avenue SW, Washington, DC 20250-9410, or call 202-720- 5964 (voice or TDD). USDA Forest Service is an equal opportunity provider and employer.



KOOTENAI NATIONAL FOREST
1101 U.S. Highway 2 West
Libby MT 59923