



File Code: 1950

Date: June 3, 2003

Welcome to the Summer 2003 edition of the quarterly Schedule of Proposed Actions (SOPA) for the Kootenai National Forest. Four times a year, this SOPA is updated, published and made available on our website ([www.fs.fed.us/r1/kootenai](http://www.fs.fed.us/r1/kootenai)).

We invite your active participation in project planning. Contributing your comments, suggestions, and site-specific information about these projects early in the planning process can help our Forest make better decisions.

Here is how the SOPA can be best used:

1. Look through the list of projects and decide what projects you would like to know more about.
2. Call the contact person and let them know you would like to be on the mailing list for the given project. The phone number for that person is on the SOPA.
3. Once you are placed on a project mailing list, you will then be notified about opportunities for public participation and you will receive information concerning that project as it is developed.

We will continue to provide this SOPA to you unless you ask us to remove your name from our mailing list. If you would like to save paper and postage, we will be happy to send you an e-mail when the new SOPA is available on our website.

If you have comments or suggestions on making this SOPA more useful, would like to receive the SOPA electronically, or have any questions, contact Kirsten Kaiser, Forest Environmental Coordinator, at 406-293-6211 or [kkaiser@fs.fed.us](mailto:kkaiser@fs.fed.us).

Sincerely,

BOB CASTANEDA  
Forest Supervisor

Enclosure

## INFORMATION ABOUT THE QUARTERLY SCHEDULE OF PROPOSED ACTIONS (SOPA)

The enclosed SOPA provides information about projects for which we have a specific proposal and are in the process of analyzing, as directed by the National Environmental Policy Act (NEPA).

Projects on the SOPA are arranged in a table format and are sorted by Ranger District, by type of project, and by date expected for each decision for each project. There are several points in the planning process during which you can be the most helpful and influential, but exact steps and timing may vary depending on the type and complexity of the project. For example, the whole planning process may only take a few days for small, non-complex projects, or several years for large complex projects such as a major mining proposal. The enclosure labeled "Project Planning Process and Where You Fit In" describes these steps and identifies what you can do to be involved.

### DEFINITIONS USED FOR THE SOPA

If you've received previous editions of this list you'll notice that some projects don't appear anymore. That's because we've finished the analysis, made the decision, and the appeal period (if applicable) has ended. In other cases, we've removed the projects from the list because we're unable to pursue them for various reasons (lack of funding, conflicts with other forest priorities, etc.). Please contact the person listed as the "contact" for a project anytime you have a question or would like to be included on the mailing list for the given project.

This list is not inclusive. Some projects may come up after publication that requires our immediate attention, and we may complete the decision document before the next edition.

At the top of each table we have listed the Ranger District, their address, and the "Newspaper of Record" (used by the District for legal notices of decision, and scoping of projects).

The following items describe the column headings and contents in the tables that follow.

**MAP KEY:** Identifies a number that goes with the attached small forest map to show the general location of the project.

**TYPE OF PROJECT:** Identifies the Resource Program area that's affected. Acronyms used include:

Mgmt – management

Exchg – Exchange

**NAME OF PROJECT:** Identifies the name of the environmental document. Acronyms used are:

EIS - Environmental Impact Statement

EA – Environmental Assessment

BPA – Bonneville Power Administration

OSR – Overstory Removal

ORV – Off Road Vehicle

Salv – Salvage

MMBF – Million board feet

LE – Land Exchange

MBF – Thousand board feet

CCF - Hundred cubic feet

RUP - Road Use Permit

ROW – Right of Way

**LOCATION & PROJECT DESCRIPTION:** Identifies both legal land description and the drainage or other identifying on-the-ground feature. If a project is located within an inventoried roadless area it is also noted here. Also included is a general description of the project, such as estimated timber volume, acres proposed for treatment, acres involved with a land exchange, etc.

Acronyms used are: T – Township

R – Range

S – Section

**NEPA STATUS:** Identifies where we are in the NEPA process. Acronyms used are:

NOI- Notice of Intent published in the Federal Register

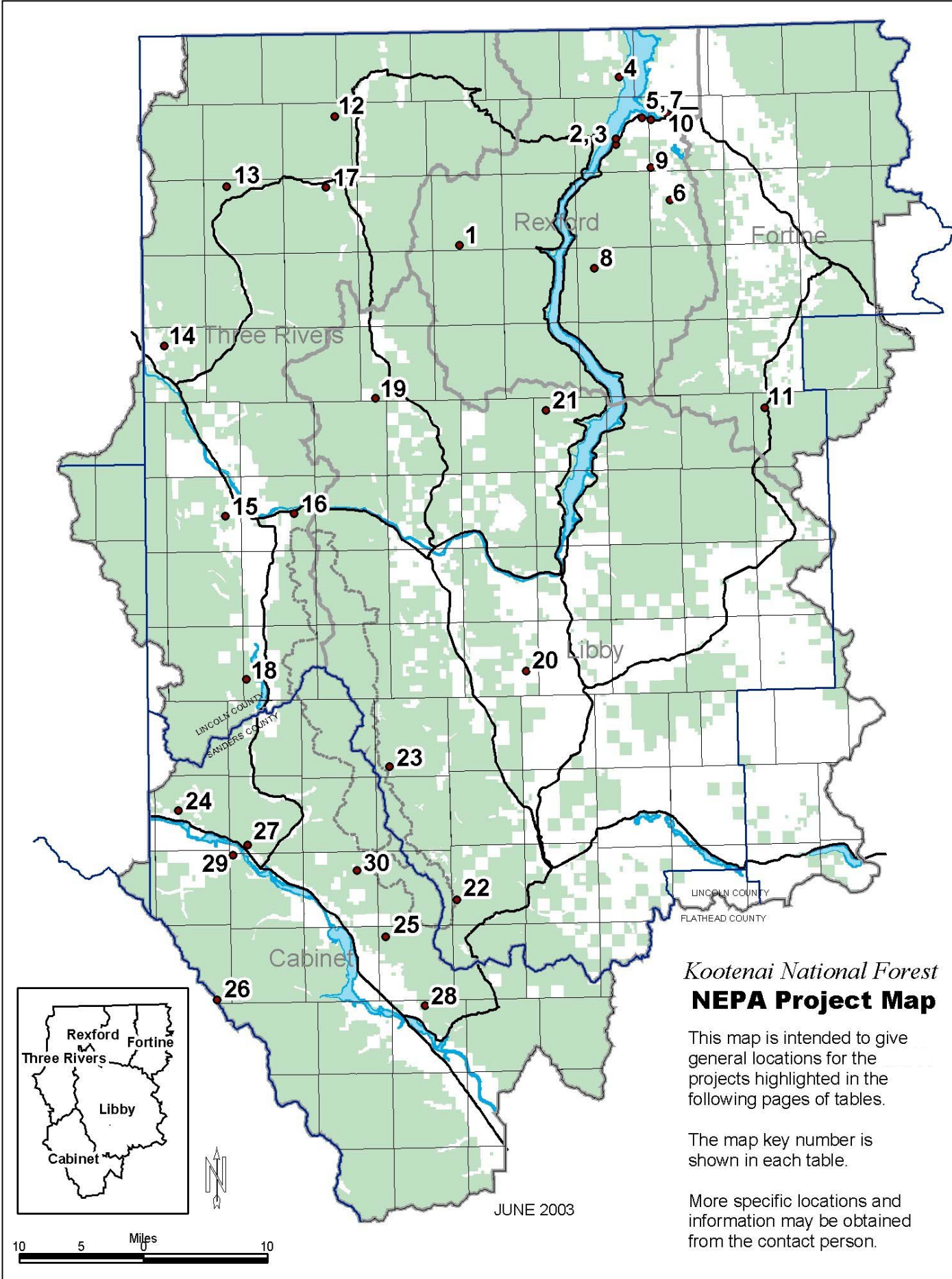
**ANTICIPATED DECISION DATE:** This is the best estimate of when the NEPA analysis will be completed. Sometimes we're not able to meet the date for various reasons but the schedule will be validated and updated each time we send it out.

**YEAR ACTIVITY TO START ON THE GROUND:** This is the best estimate of when ground disturbing activities would occur and/or contracts or permits would be offered.

**CONTACT PERSON:** This is the person at the Ranger District or Forest to contact for further information regarding the project.

## THE PROJECT PLANNING PROCESS & WHERE YOU MIGHT FIT

ANALYSIS STEP	PARTICIPATION OPTIONS
Identify need for project – Forest Service, business, organization, or individual suggests a project	Bring need for a project to the attention of Forest Service
Develop detailed project proposal (Forest Service or other project proponent)	Develop project proposal
Scoping – solicit public comment on the proposal (how it might affect forest resources & uses; how the project could be done better). This defines the scope of environmental analysis needed and the range of alternatives that should be considered	Comment on proposal – suggest issues, concerns, alternatives or mitigation measures
Develop range of alternatives based on the issues raised during scoping. One alternative is to stay with the status quo (No Action)	Suggest variations to the original proposal
Initiate public comment process (scoping), which includes a 45-day comment period for Draft EIS's and 30-day comment period for most other projects. A copy of the environmental document will be mailed to those who requested a copy and to those who have participated in the environmental analysis process. A legal notice, requesting comments on appealable projects, will be published in the <i>Daily Inter Lake</i> , Kalispell, MT, which is our newspaper of record (36 CFR 215.5)	Provide comments on the environmental analysis. See 36 CFR 215.6 for description of information to provide
Notice of appealable decisions will be published in the newspaper of record. Copies of the decision document will be sent to those who submitted comments on the proposed action either before or during the comment period identified above (36 CFR 215.9)	Review decision: exercise option to appeal, when applicable, through administrative process
Appeal period will be open for 45 days following legal notice of decision in the newspaper except if no one expressed interest and there is no change from the proposed action. (36 CFR 215.10)	File Notice of Appeal (see section 36 CFR 215.14 for contents of an appeal) Only those who commented through the process described above or expressed interest will be able to appeal. (36 CFR 215.11). NOTE: Persons interested in or potentially affected by an appeal may participate as an interested party (36 CFR 215.11 (2)(b)). Interested parties must submit written comments to the appeal reviewing officer within 15 days after close of the appeal filing period (36 CFR 215.13(e). The informal disposition meeting is open to the public and interested parties (36 CFR 215.16(c)).
Implement the project	Contribute labor, equipment or funding
Monitor & evaluate project results	Provide feedback on the project



*Kootenai National Forest*  
**NEPA Project Map**

This map is intended to give general locations for the projects highlighted in the following pages of tables.

The map key number is shown in each table.

More specific locations and information may be obtained from the contact person.

MAP KEY	TYPE OF PROJECT	NAME OF PROJECT	LOCATION & PROJECT DESCRIPTION	NEPA STATUS	ANTICIPATED DECISION DATE	YEAR ACTIVITY TO START ON GROUND	CONTACT PERSON
1	Timber Sale, Fuels, Silviculture, Watershed Restoration	Lower Big Creek	T33-36N, R29-31W. Big Creek drainage including North Fork and South Fork of Big Creek. Approximately 3,625 acres of timber harvest and prescribed burning; 1,100 acres of underburning without harvest; road decommissioning, storage, and reconstruction; project-specific Forest Plan amendments; harvest openings greater than 40 acres.	Developing Alternatives	September 2003	2004	Chris Fox 296-7155
2	Special Use	Town of Rexford Waterline and Sewage Lagoon Permit	T36N, R28W, Section 22. Rexford townsite area. Renewal of existing permit for a water transmission line and sewage lagoon on approximately 8 acres. Includes the upgrade of a 400 foot water pipe.	Seeking Public Comment	July 2003	2003	Eric Heyn 296-2536
*	Special Use	Interbel Telephone Company	Renewal of existing permits for buried telephone lines on the Rexford and Fortine Ranger Districts.	Seeking Public Comment	July 2003	2003	Eric Heyn 296-2536
3	Special Use	Green Special Use Water Transmission Line	T36N, R28W, Section 22. Rexford area. Renewal of existing water transmission line, 200 feet in length.	Seeking Public Comment	August 2003	2003	Eric Heyn 296-2536
4	Special Use/Road Use	Woodard Special Use Road Users Association Permit	T37N, R28W Section 26. West Kootenai area. Application submitted by a Road Users Association, requesting access over an existing non-system road on FS lands. Road is approximately 30 feet in length.	Seeking Public Comment	July 2003	2003	Eric Heyn 296-2536
5	Special Use/Road Use	Hoover Special Use Road Permit	T36N, R28, Section 12. Rexford area. Renewal of existing road access. Access is 150 feet in length.	Seeking Public Comment	August 2003	2003	Eric Heyn 296-2536
6	Special Use/Road Use	Johnson Special Use Road Permit	T35N, R27W. Request submitted for access on Forest Service Road # 7912. Road is approximately 3.5 miles.	Seeking Public Comment	September 2003	2004	Eric Heyn 296-2536
7	Recreation	Koocanusa Drawdown	T36-37N, R27, 28W, T32N, R29W. Mouth of the Tobacco River, Sophie Bay, Mouth of Bristow Creek. Access and travel management within the Reservoir and the draw down area.	Decision April 2003	Complete	2003	Cindy Hemry 296-7149
8	Recreation	Lower Inch McGuire Hiking Trail	T34N, R28W, Sections 6, 8, 16, 21. Inch Mtn-Flat Creek area. Work on this non-motorized trail includes reestablishment of trail tread width, placement of erosion control barriers and trail alignment for approximately 6 miles.	Seeking Public Comment	July 2003	2003	Eric Heyn 296-2536
9	Recreation	Pinkham Falls Hiking Trail	T36N, R27W, Section 31. Pinkham Creek Area. Establishing non-motorized trail over former logging skid trails and placement of a new trail segment for approximately 900 feet.	Seeking Public Comment	July 2003	2003	Eric Heyn 296-2536
10	Recreation	Rails to Trails Hiking Trail	T36N, R27W, Sections 7. Tobacco Bay Area. Establishment of a non-motorized hiking trail for approximately 1/8 mile.	Seeking Public Comment	August 2003	2003	Eric Heyn 296-2536

MAP KEY	TYPE OF PROJECT	NAME OF PROJECT	LOCATION & PROJECT DESCRIPTION	NEPA STATUS	ANTICIPATED DECISION DATE	YEAR ACTIVITY TO START ON GROUND	CONTACT PERSON
11	Timber Sale, Fuels, Watershed Restoration	Fortine	T33N, R26W, Sections 21-22, 27-29, 31-35; T32; T32N, R28W; Sections 3-11, 14-36; T32N, R27W; Sections 1-2, 11-14, 23-26; T31N, R26W; Sections 3-5, 8-10, 15, and 16; Fortine Watershed. Project includes timber harvest, prescribed burning, watershed restoration, and road decommissioning. Some openings greater than 40 acres.	Developing Alternatives	December 2003	2004	Joleen Dunham 882-8325
*	Silviculture	FY2003 Pre-Commercial Thinning	District-wide thinning outside of lynx habitat. Approximately 525 acres.	Decision Withdrawn; Decision Reissued	May 2003	2003	Scott Bates 882-8320
*	Special Use	Interbel Telephone Company	Renewal of existing permits for buried telephone lines on the Rexford and Fortine Ranger Districts.	Seeking Public Comment	July 2003	2003	Eric Heyn 296-2536

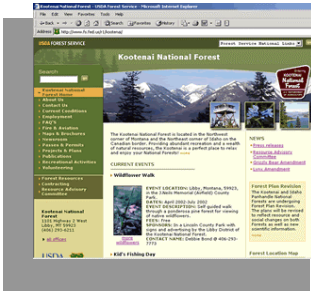
MAP KEY	TYPE OF PROJECT	NAME OF PROJECT	LOCATION	NEPA STATUS	ANTICIPATED DECISION DATE	YEAR ACTIVITY TO START ON GROUND	CONTACT PERSON
12	Timber Sales, Fuels Reduction, Silviculture	Garver	Portions of T36N, R32W; T36N, R31W; T37N, R32W; and T37N, R31W; within the West Fork Yaak, Pete Creek, and Yaak Face drainages. Includes prescribed burning in the West Fork Yaak Inventoried Roadless Area, changes to old growth designations.	Draft EIS Complete	June 2003	2003	Kathy Mohar 295-7426
13	Silviculture	Timber Stand Improvement 2003/2004	West Fork Yaak, T37N, R32W (17 acres); Hensley Hill, T36N, R32W (76 acres); Gus Creek, T35N, R33W (50 acres); Cool Creek, T35N, R32W (25 acres); Cougar Ridge, T33N, R34W (31 acres); South Side Road T61N, R3E (9 acres) and Keeler Creek, T30N, R33/34W (86 acres). Tree thinning and pruning.	Analyzing Effects	June 2003	2003	Joe Hessekemper 295-7449
14	Fuels Reduction	Lime Cr. Fuels Reduction	Portion of Section 9, T33N, R34W, off Lime Cr. Rd.	New Decision Pending	June 2003	2003	Miles Friend 295-7479
15	Recreation	Callahan Interpretative Trail Extension	Portion of Sections 13, 23, T31N, R34W from existing trail into the town of Troy, MT. Trail would be extended on the historic railroad grade across FS and Plum Cr. lands and tie into the Callahan Cr. Rd. (427) ROW.	Seeking public comment, analyzing effects	June 2003	2003	Mark Mason 295-7480
16	Recreation	Old Highway 2 Interpretative Trail Relocation - Hwy 56 Portal	Portions of Sections 13, 14, and 22, T31N, R33W. Re-route existing trail away from shooting area (Plum Cr. lands) and improve tread corridor (FS lands).	Seeking public comment, analyzing effects	June 2003	2003	Mark Mason 295-7480
17	Special Use Permit/Easement	Cool Creek Access	T35N, R32W, Sections 2, 3, 4. Across the Yaak River from Yaak, MT. Access request (less than 1 mile) for use of FS road on FS lands.	Analyzing effects	July 2003	2003	Dick Harlow 295-7432
18	Road Uses	Stanley Creek Access	Request for a RUP to haul 200 MBF of timber on FS. Rd. 4626 within portions of Section 35 and 36, T29N, R34W and portions of Section 6, T29N, R34W.	Analyzing effects	June 2003	2003	Dick Harlow 295-7432

MAP KEY	TYPE OF PROJECT	NAME OF PROJECT	LOCATION & PROJECT DESCRIPTION	NEPA STATUS	ANTICIPATED DECISION DATE	YEAR ACTIVITY TO START ON GROUND	CONTACT PERSON
19	Timber Sale, Fuels, Watershed Restoration	Pipestone	T34N, R32W, Section 36; T34N, R31W, Sections 11,14,15,21-36; T34N, R30W, Section 1; T33N, R32W, Sections 1,12,23-5,36; T33N, R31W, Sections 1-36; T33N, R30W, Sections 18-20,29-33; T32N, R32W, Sections 1,12-13,24,25,36; T32N,R31W,Sections 1-36; T32N, R30W, Sections 5-10,15-21,29-32; T31N, R31W, Sections 1-22,29,30; T31N, R30W, Sections 4-9,17,18. Pipe Creek area. Includes Forest Plan ORD, VQO, movement corridors, and hiding cover amendments, openings greater than 40 acres, prescribed burning in the Gold Hill West Inventoried Roadless Area, 99 miles of road decommissioning, .47 miles of road construction on FS lands by Plum Creek, 2 miles of snowmachine trail construction, .24 miles of temporary road construction, 2.18 miles of road reconstruction, .68 miles of permanent road construction, and 4374 acres of prescribed burning.	DEIS Complete 5/02	August 2003	2003	Leslie Ferguson 283-7568
20	Timber Sale	South McSwede	T29N,R30W, Sections 28,29,32-34; T28N,R30W, Sections 1,2,9-15,22-27,33-36; T28N, R29W, Sections 7,8,18; T27N, R30W, Sections 4,5,9. Includes 709 acres of commercial timber harvest, 456 acres of natural fuel reduction, 550 acres of precommercial thinning, 3 miles of temporary road construction, private land access, 5 miles of road decommissioning , 26 miles of road storage, 47 miles of road repair and BMP implementation, and 5 miles of trail construction.	EA Complete April 2003	September 2003	2003	Leslie Ferguson 283-7568
21	Timber Sale, Fuels	Bristow	T33N, R30W, Sections 35, 36; T33N, R29W, Sections 31, 32, 36; T33N, R28W, Sections 31; T32N, R30W, Sections 1, 2, 3, 11, 12, 21- 28; T32N, R29W, Sections 1-12, 14-17, 20-23, 27-28, 32-34; T31N, R30W, Section 11 and T31N, R29W, Sections 3-4, and 9, Jackson, Barron and Bristow Creeks. Includes 2315 acres of timber harvest, 1171 acres of fuel treatment, 1167 acres of precommercial thinning, 6 miles of temporary road construction, 3 miles of road decommissioning, Forest Plan ORD amendment and openings greater than 40 acres.	Developing Alternatives	December 2003	2004	Denise Beck 283-7504
*	Timber Sale	Districtwide Blowdown	Includes harvesting dead and down timber in various areas of Libby Ranger District.		Dropped	2003	Denise Beck 283-7504
22	Special Uses	Bear Lakes Access Request	T26N, R30W, Section 30. Silver Butte Area. Livestock use of existing trail and 500 feet of associated trail construction accessible to livestock. Trail accesses private lands.	Decision Pending	July 2003	2003	Denise Beck 283-7504
23	Lands	Silver Cable	T28N, R31W, Sections 29,30,31,32. FS proposes to purchase 96 acres of private property located in Cable Creek drainage.	Seeking Public Comment	October 2003	2004	Malcolm Edwards 293 - 7773



MAP KEY	TYPE OF PROJECT	NAME OF PROJECT	LOCATION & PROJECT DESCRIPTION	NEPA STATUS	ANTICIPATED DECISION DATE	YEAR ACTIVITY TO START ON GROUND	CONTACT PERSON
24	Timber Sale and Fuels	Fat Blue Eddy	T27N, R34W, Sections 7-10, 15-18, 21-23, 24,25. Blue Creek and Big Eddy Creek drainages near Heron, MT. Fuel reduction in areas adjacent to private property, some timber harvest, pre-commercial thinning.	Developing proposal	June 2004	2004	John Head 827-0738
25	Fuels, Timber Sale	Green Mountain Fuel Reduction	T25N, R32W; Sections 1, 2, 11, 12. Green Mountain area. Fuel reduction adjacent to private property with some timber harvest.	Analyzing Effects	November 2003	2003	Kurt Werst 827-0712
*	Silviculture	Cabinet District Pre-commercial Thinning	Various locations across the District. Thinning small trees and excess fuels from existing plantations.	Analyzing Effects	June 2003	2003	Gene Newell 827-0727
*	Special Uses	Blackfoot Communication Fiber Optic	T26N, R32W, Section 33. Installation of a 450 ft. fiber optic cable within a cleared ROW, near the Noxon Dam access road.	NEPA complete	Varies	2003	Bruce Haflich 827-0730
*	Recreation	Trailhead Enhancements	Various locations across District, including Squaw Peak, Berray Mtn, Middle and North Fork Bull River, Pillick Ridge, and Blacktail Trailheads.	Seeking Public Comment	July 2003	2003	Les Raynor 827-0720
26	Special Uses	Eighty Peak Repeater	T25N, R34W, Section 26. Eighty Peak area. Proposed installation of a radio system repeater on a site previously used for a lookout and a radar installation. Activities include installation of a small building to house equipment and installation of a propane tank to supply power.	Seeking Public Comment	July 2003	2003	Kurt Werst 827-0712
27	Special Uses	Boar's Breath Small Tract Act	T27N; R33W; Section 32. Miller Creek area. Proposal is to sell approx. 1.3 acres of isolated FS land, surrounded by private land, to adjacent landowners under Small Tract Act authority.	Developing Proposal	September 2003	2003	Bruce Haflich 827-0730
28	Land Exchange	Cox Land Exchange	T22N, R30W, Section 5(NFS); T23N, R31W, Section 11; PMM; Sanders County (Private).	Analyzing Effects	July 2003	2003	Bruce Haflich 827-0730
29	Land Conveyance	Noxon Admin Site Conveyance	T26N, R33W, Section 24. Adjacent to Noxon, MT townsite. National pilot authority to convey surplus government properties. Conveyance of the old Noxon Ranger District station property and associated improvements (i.e. structures) to private ownership. 110 acres and structures.	Analyzing Effects	October 2003	2005	Bruce Haflich 827-0730

MAP KEY	TYPE OF PROJECT	NAME OF PROJECT	LOCATION & PROJECT DESCRIPTION	NEPA STATUS	ANTICIPATED DECISION DATE	YEAR ACTIVITY TO START ON GROUND	CONTACT PERSON
30	Minerals	Rock Creek (Sterling Mine)	T26N, R32W. Includes Forest Plan amendments. Copper/silver mine near Noxon, MT.	Decision Pending	June 2003	2003	John McKay 283-7691
*	Forest Plan Amendment	Forest Plan Amendments for Motorized Access Management within the Selkirk/Cabinet-Yaak Grizzly Bear Recovery Zones	Portions of the Lolo, Idaho Panhandle and Kootenai National Forests. Motorized access management.	Decision Pending	July 2003	2003	Kirsten Kaiser 283-7659
*	Forest Plan Amendment	Northern Rockies Lynx Amendment	18 National Forests in Regions 1, 2 and 4. Lynx management.	DEIS expected 7/03	2004	2003	John Haber 329-3399
	Forest Plan Revision	Kootenai and Idaho Panhandle National Forests Forest Plan Revision	Forest-wide. Revision of Forest Plan management direction.	Scoping Complete 5/30/03 Public Mtng June 2003	2005	2005	Joe Krueger 283-7774



Go to [www.fs.fed.us/r1/kootenai/](http://www.fs.fed.us/r1/kootenai/) for the current and past issues of the Quarterly Schedule of Proposed Actions(SOPA) and for information on recreational opportunities, current events, publications, contracting, fire, forest resources, press releases and lots more.

Check back regularly, as we continue to expand opportunities for public involvement on our website!

The U.S. Department of Agriculture (USDA) prohibits discrimination in its programs on the basis of race, color, national origin, sex, religion, age, disability, political beliefs, sexual orientation, or marital or family status. (Not all prohibited bases apply to all programs.) Persons with disabilities who require alternative means for communication of program information (Braille, large print, audiotape, etc.) should contact USDA's TARGET Center at 202-720-2600 (voice and TDD). To file a complaint of discrimination, write USDA, Director, Office of Civil Rights, Room 326-W, Whitten Building, 1400 Independence Avenue SW, Washington, DC 20250-9410, or call 202-720- 5964 (voice or TDD). USDA Forest Service is an equal opportunity provider and employer.



KOOTENAI NATIONAL FOREST  
1101 U.S. Highway 2 West  
Libby MT 59923