



United States  
Department of  
Agriculture

Forest  
Service

Kootenai N. F.

506 US Highway 2 West  
Libby, MT 59923

---

File Code: 1950

Date: March 6, 2001

The Kootenai National Forest is involved in many programs and activities. Enclosed you will find information about projects for which we have a specific proposal, and are in the process of analyzing as directed by the National Environmental Policy Act (NEPA).

The projects are arranged in a table format and are sorted by Ranger District, by type of project, and by date expected for each decision for each project. There are several points in the planning process during which you can be the most helpful and influential, but exact steps and timing may vary depending on the type and complexity of the project. For example, the whole planning process may only take a few days for small, non-complex projects, or several years for large complex projects such as a major mining proposal. Nevertheless, there are some basic steps we go through for every project. The enclosure labeled "Project Planning Process and Where You Fit In" describes these steps and identifies what you can do to be involved. It is important for you to understand this process so that you may receive the environmental documents in which you are interested. I want to stress that your participation in these activities, in a timely manner, can promote better decisions by helping us better understand alternatives to our proposals and to evaluate their implications on the land and the adjacent communities.

If you would like more information on a specific project, please contact the district or forest contact person listed for each project.

Sincerely,

BOB CASTANEDA  
Forest Supervisor

enclosure



## DEFINITIONS USED FOR THE QUARTERLY SCHEDULE OF PROPOSED ACTIONS

If you've received previous editions of this list you'll notice that some projects don't appear anymore. That's because we've finished the analysis, made the decision, and the appeal period (if applicable) has ended. In other cases, we've removed the projects from the list because we're unable to pursue them for various reasons (lack of funding, conflicts with other forest priorities, etc.). Please call the person listed as the "contact" for a project anytime you have a question.

This list is not inclusive. Some projects may come up after publication that requires our immediate attention, and we may complete the decision document before the next edition.

At the top of each table we have listed the Ranger District, their address, and the "Newspaper of Record" (used by the District for legal notices of decisions, and scoping of projects).

The following items describe the column headings and contents in the tables that follow, beginning on the left side of the table.

**MAP KEY:** Identifies a number that goes with the attached small forest map to show the general location of the project.

**TYPE OF PROJECT:** Identifies the Resource Program area that's affected. Acronyms used area:

Mgmt - management  
Exchg - Exchange

**PROJECT NAME:** Identifies the name of the environmental document. Also included is a general description of the project, such as estimated timber volume, acres proposed for treatment, acres involved with a land exchange, etc. Acronyms used are:

EIS - Environmental Impact Statement	WL - Wildlife
BPA - Bonneville Power Administration	OSR - Overstory Removal
ORV - Off Road Vehicle	Salv - Salvage
MMBF - Million board feet	LE - Land Exchange
MBF - Thousand board feet	CCF-Hundred cubic feet
RUP-Road use permit	

**LOCATION:** Identifies both legal land description, and the drainage or other identifying on-the-ground feature. If a project is located within an inventoried roadless area, it is also noted here. Acronyms used are:

T - Township                      R - Range                      S - Section

**NEPA STATUS:** Identifies where we are and will be in the NEPA process during the next three months. This corresponds to the table "Project Planning Process". If several items are listed, it means we'll be moving through several stages of the planning process in the next three months. NOI means Notice of Intent that is published in the Federal Register.

**ANTICIPATED DECISION DATE:** This is the best estimate of when the NEPA analysis will be completed. Sometimes we're not able to meet the date for various reasons, but the schedule will be validated and updated each time we send it out.

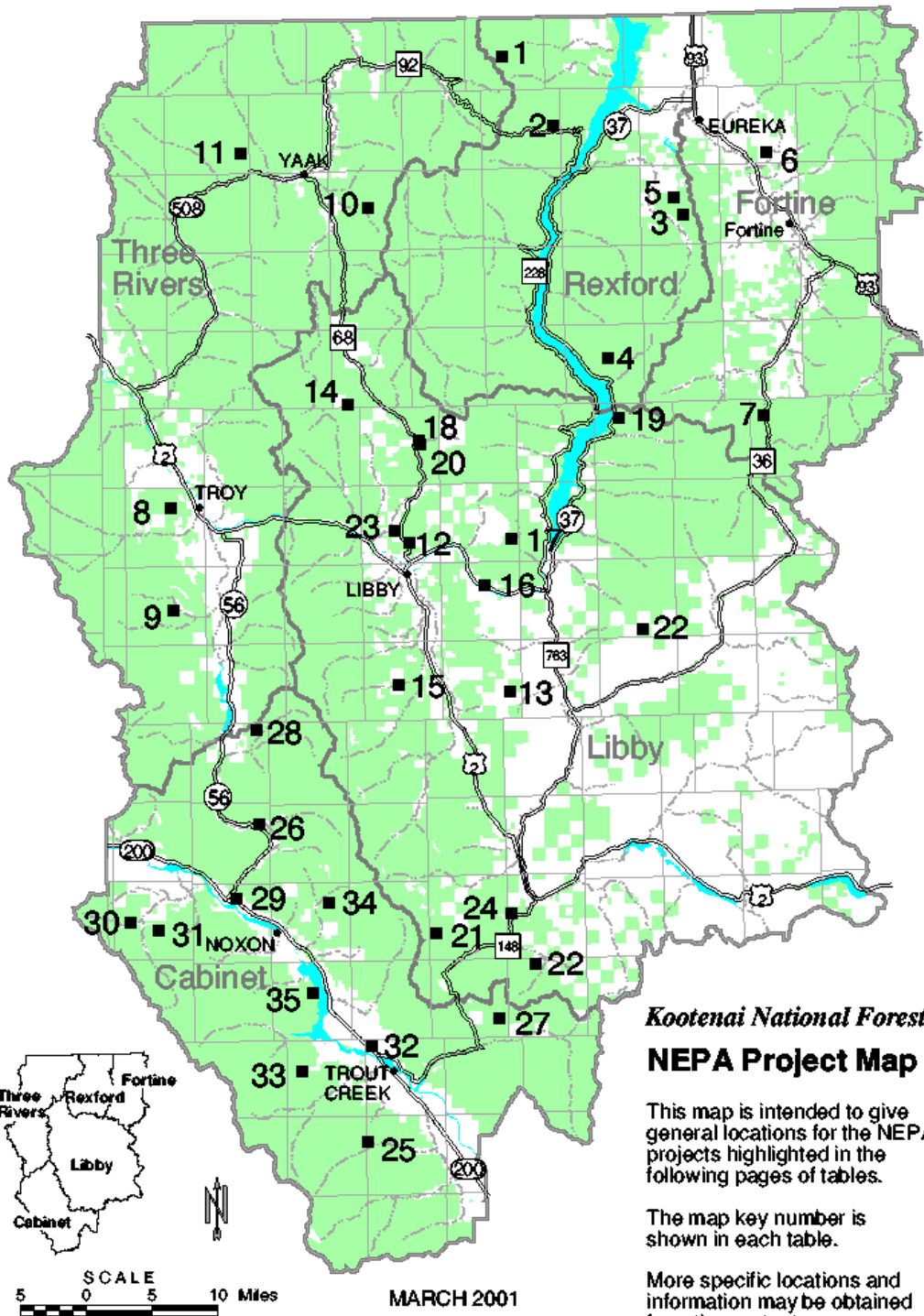
**YEAR ACTIVITY TO START ON THE GROUND:** This is the best estimate of when ground disturbing activities would occur and/or contracts or permits would be offered.

**CONTACT PERSON:** This is the person at the Ranger District or Forest to contact for further information regarding the project.

### THE PROJECT PLANNING PROCESS & WHERE YOU MIGHT FIT

ANALYSIS STEP	PARTICIPATION OPTIONS
Identify need for project - Forest Service, business or individual suggests a project	Bring need for a project to the attention of Forest Service
Develop detailed project proposal (Forest Service or other project proponent)	Develop project proposal
Scoping - solicit public comment on the proposal (how it might affect forest resources & uses; how the project could be done better). This defines the scope of environmental analysis needed and the range of alternatives that should be considered	Comment on proposal - suggest issues, alternatives or mitigation measures to reduce impacts on the environment
Develop range of alternatives based on the issues raised during scoping. One alternative is to stay with the status quo (No Action)	Suggest variations to the original proposal
Initiate public comment process which includes a 45 day comment period for Draft EIS's and 30 day comment period for EA's and timber sales that can be categorically excluded. A copy of the EIS or EA will be mailed to those who requested a copy and to those who have participated in the environmental analysis process. A legal notice, requesting comments, will be published in the Daily Interlake, Kalispell, MT, which is our newspaper of record (36 CFR 215.5)	Provide comments on the environmental analysis. See 36 CFR 215.6 for description of information to provide
Notice of decision will be published in the newspaper of record. Copies of the decision document will be sent to those who submitted comments on the proposed action either before or during the comment period identified above (36 CFR 215.9)	Review decision: exercise option to appeal through administrative process
Appeal period will be open for 45 days following legal notice of decision in the newspaper except if no one expressed interest and there is no change from the proposed action. (36 CFR 215.10)	File Notice of Appeal (see section 36 CFR 215.14 for contents of an appeal) NOTE: Only those who commented through the process described above or expressed interest will be able to appeal. (36 CFR 215.11)

Implement the project	Contribute labor, equipment or funding
Monitor & evaluate project results	Provide feedback on the project



## QUARTERLY SCHEDULE OF PROPOSED ACTIONS - MARCH 2001

**REXFORD RANGER DISTRICT**, 1299 Highway 93 North, Eureka, MT 59917 - Phone: 406-296-2536, Fax: 406-296-2588 **NEWSPAPER OF RECORD:** *DAILY INTERLAKE*, Kalispell, MT

MAP KEY	TYPE OF PROJECT	NAME OF PROJECT	LOCATION	NEPA STATUS	ANTICIPATED DECISION DATE	YEAR ACTIVITY TO START ON GROUND	CONTACT PERSON
1	Timber Sale, Prescribed Burning, Watershed Restoration	Young J	T37N, R29W, PMM, Lincoln Co., MT; Young Creek drainage.	Seeking Public Comment	July 2001	2001	Ron Komac
2	Timber Sale, Prescribed Burning, Thinning, Watershed Restoration	Gold/Boulder/Sullivan	T34-36N, R28, 29W, PMM, Lincoln Co., MT; Gold, Boulder, and Sullivan drainages. May include road decommissioning. Includes Forest Plan Amendments	Seeking Public Comment.	September 2001	2001	Ron Komac
3	Timber Sale, Prescribed Burning, Watershed Restoration	Pink Stone EIS	T 34-36N, R27-29W, PMM, Lincoln Co., MT: Pinkham Creek drainage, may include road decommissioning. Includes Forest Plan Amendments.	Seeking Public Comment	September 2001	2001	Ron Komac
4	Prescribed Burning	Ten Mile 01	T33N R28W SEC's 17, 20, and 21, PMM, Lincoln Co., MT: Tenmile Creek area.	Seeking Public Comment	March 2001	2001	Sheila Braun
5	Mineral Material Source	Virginia Hill Quarry	T35N, R27W, Sec 16. Virginia Hill Area	Dropped			Jennifer Swan

**FORTINE RANGER DISTRICT**, P.O. Box 116, Fortine, MT 59918 - Phone: 406-882-4451, Fax: 406-882-4835 **NEWSPAPER OF RECORD:** *DAILY INTERLAKE*, Kalispell, MT

MAP KEY	TYPE OF PROJECT	NAME OF PROJECT	LOCATION	NEPA STATUS	ANTICIPATED DECISION DATE	YEAR ACTIVITY TO START ON GROUND	CONTACT PERSON
6	Timber Sale	Foothills Management Project EA; 4232-5737 CCF (1.8-2.4 MMBF)	T36N, R26W, Sections 15, 17, 20, 23, 27, 28, 33 and 34; T35N, R26W Sections 2, 3, 4, 10 and 11. Proposes road decommissioning.	Decision Signed 12/08/00	Completed	2001	Toby Spribille
7	Timber Sale	Fortine Timber Sales and Associated Activities EIS; 22000-46000 CCF (9-19 MMBF)	T33N, R26W, Sec. 21-22, 27-29, 31-35; T32; T32N, R28W. Sections 3-11, 14-36; T32N, R27W, Sections 1-2, 11-14, 23-26; T31N, R26W, Sections 3-5, 8-10, 15, and 16.	Developing Proposal	May 2002	2002	Joleen Dunham
*	Special Uses	Re-Issuance of Special Use Permit; Lincoln Electric Co-op, Inc.	Rexford, Fortine, and Libby Ranger Districts	Decision Signed	Completed	2001	Steve Gauger
*	Pre-Commercial Thinning	FY2001 District-wide Pre-Commercial Thinning	District-wide, not within Lynx habitat.	Decision Pending	March 2001	2001	Scott Bates

		Approx. 700 acres					
--	--	-------------------	--	--	--	--	--

**THREE RIVERS RANGER DISTRICT**, 1437 N. Highway 2, Troy, MT 59935 - Phone:406-295-4693, Fax: 406-295-4142 **NEWSPAPER OF RECORD: DAILY INTERLAKE**, Kalispell, MT

MAP KEY	TYPE OF PROJECT	NAME OF PROJECT	LOCATION	NEPA STATUS	ANTICIPATED DECISION DATE	YEAR ACTIVITY TO START ON GROUND	CONTACT PERSON
8	Timber Sale	Troy Beetle Salvage	Sec. 20, T34N, R34W; Sec. 32, 33, T34N, R33W; Sec. 20, 31, 32, T33N, R33W; Sec. 3, 10, 15, T33N, R34W; Sec. 16, 18-20, 29, T32N, R33W; Sec. 13, T32N, R34W; Sec. 2, T32N, R35W; Sec. 2, 4, 9, T31N, R33W; Sec. 1, 12, T31N, R32W; Sec. 2, 3, 10, 11, 14, 15, 23, 24, 26, T31N, R34W; Lincoln County, Montana; and Sec. 10, T60N, R3E, Boundary County, Idaho. Includes Forest Plan Amendment.	Decision Pending	March 2001	2001	Kathy Mohar
9	Timber Sale, Prescribed Burning, Thinning, Watershed Restoration	Spar and Lake Subunits Forest Health Project	T28N - T31N, R33W and 34W, PMM, Lincoln Co., MT; Iron, Keeler, Twilight, Stanley, Ross, Camp, Madge, Spring, and Noggle drainages. Includes road decommissioning. Prescribed burning activities are proposed within the Scotchman Peaks Inventoried Roadless Area and/or proposed wilderness area. Includes Forest Plan Amendments.	Decision Pending	April 2001	2001	Kathy Mohar
10	Timber Sale, Planting, Watershed Improvement	Kelsey-Beaver	Portions of T35N, R32W; T35N, R31W; and T36N, R30W; Lincoln County, Montana. Includes Forest Plan Amendment and planting in Mt. Henry Roadless Area. May include road decommissioning and openings over 40 acres.	Seeking Public Comments	October 2001	2002	Mike Giesey
11	Precommercial Thinning, white pine pruning	Timber Stand Improvement 2001	T37N, R31W, Secs. 31 and 32; T36N, R32W, Secs. 1 & 6; T36N, R32W, Secs. 19, 20, 21, 28; T35N, R32W, Secs. 5-8; T33N, R34W, Sec. 29; T61N, R3E, Sec. 34; T29N, R34W, Sec. 12.	Analyzing Effects	March 2001	2001	Joe Hessenkemper

**LIBBY RANGER DISTRICT: Canoe Gulch RS**, 12557 HWY 37, Libby, MT 59923 Phone: 406-293-7773, FAX: 406-293-5758 **NEWSPAPER OF RECORD: DAILY INTERLAKE**, Kalispell, MT

MAP KEY	TYPE OF PROJECT	NAME OF PROJECT	LOCATION	NEPA STATUS	ANTICIPATED DECISION DATE	YEAR ACTIVITY TO START ON GROUND	CONTACT PERSON
12	Timber Sale	Sheldon Heights 6340 CCF (2.6 MMBF). Road construction (.57 miles) on FS lands to access private lands and FS treatment area. Road access change.	T31N, R30W, Sections 20, 29,30; T31N, R31W, Sections 10,11,14,15,16,21-27,34. Sheldon Mountain area.	Decision Signed 2/16/01	Completed	2001	Kirsten Kaiser
13	Timber Sale	South McSwede 5975 CCF (2.45 MMBF). Includes 590 acres of precommercial thinning, 3 miles of temp road construction, private land	T29N, 65R30W, Sections 28,29,32-34; T28N,R30W, Sections 1,2,9-15,22-27,33-36; T28N, R29W, Sections 7,8,18; T27N, R30W, Sections 4,5,9.	Seeking Public Comment	September 2001	2001	Tim Charnon

		access, and 9 miles of road decommissioning.					
--	--	--	--	--	--	--	--

**LIBBY RANGER DISTRICT: Canoe Gulch RS, 12557 HWY 37, Libby, MT 59923 Phone: 406-293-7773, FAX: 406-293-5758** **NEWSPAPER OF RECORD: DAILY INTERLAKE, Kalispell, MT**

MAP KEY	TYPE OF PROJECT	NAME OF PROJECT	LOCATION	NEPA STATUS	ANTICIPATED DECISION DATE	YEAR ACTIVITY TO START ON GROUND	CONTACT PERSON
14	Timber Sale	Pipestone 13,170 CCF (5.4 MMBF). May include Forest Plan ORD amendment. Includes prescribed burning in the Gold Hill West IRA, 65 miles of road decommissioning, .47 miles of road construction on FS lands by Plum Creek, 2.18 miles of reconstruction on FS lands by the FS and private landowners, 1000 feet of snowmachine trail construction, and .60 miles of temporary road const.	T34N, R32W, Section 36; T34N, R31W, Sections 11,14,15,21-36; T34N, R30W, Section1; T33N, R32W, Sections 1,12,23-5,36; T33N, R31W, Sections 1-36; T33N, R30W, Sections 18-20,29-33; T32N, R32W, Sections 1,12-13,24,25,36; T32N,R31W,Sections 1-36; T32N, R30W, Sections 5-10,15-21,29-32; T31N, R31W, Sections 1-22,29,30; T31N, R30W, Sections 4-9,17,18. Pipe Creek area.	Analyzing Effects	October 2001	2001	Kirsten Kaiser
*	Silviculture	Precommercial thinning. Approximately 3385 acres.	Libby District	Analyzing Effects	May 2001	2001	Kirsten Kaiser
*	Silviculture	Tree pruning. Approximately 800 acres.	Libby District	Analyzing Effects	May 2001	2001	Kirsten Kaiser
15	Recreation	Flower Creek parking lot expansion.	T30N, R31W, Section 21. Flower cross country ski area.	Seeking Public Comment	July 2001	2001	Jon Jeresek
16	Recreation/ Minerals	Re-Reg. Mineral material removal associated with boat ramp, parking and restroom construction.	T30N, R30W, Section 10. Adjacent to Highway 37 at the 8.7 mile post.	Analyzing Effects	April 2001	2001	Bobbi Lacklen
*	Minerals	Mineral Material Sources. Expansion and reclamation of 79 existing gravel pits.	Libby Ranger District	Analyzing Effects	July 2002	2002	Bobbi Lacklen
17	Special Uses	Bonneville Power Assn (BPA) Road Access. Includes ¼ mi rd construction	T31, R30, Section 25, Alexander Creek area	Decision Pending	June 2001	2001	Dick Harlow
18	Special uses	Beebe road request. Includes reconstruction of 400 feet of existing road on FS lands.	T32N, R31W, Section 14. Pipe Creek area. May be included in Pipestone decision.	Analyzing Effects	June 2001	2001	Dick Harlow
19	Special uses	Spring Creek road access. Includes 1/4 mile road construction.	T32N, R28W, Section 5. Volcour Gulch area.	Seeking Public Comment	July 2001	2001	Dick Harlow
20	Special uses	Burrier road request. Includes reconstruction (widening) of 200 feet of existing road on FS lands.	T32N, R31W, Section 14. Pipe Creek area. May be included in Pipestone decision.	Analyzing Effects	September 2001	2001	Dick Harlow
21	Special uses	Bear Lakes access request. Livestock use of existing trail and 200 feet of associated trail construction accessible to livestock. Trail accesses private lands.	T26N, R30W, Section 30. Silver Butte area.	Seeking Public Comment	September 2001	2001	Dick Harlow
22	Special uses	Installation of 7 miles of fiberoptic lines where existing lines occur. May include road improvements.	T25N, R29W, Sec 11,12; T25N, R30W, Sec 5,6; T26N, R30W, Sec 33, 34, 35, 36; T26N, R31W, Sec 17,18, 19, 30; T30N, R27W, Sec 34; T30N, R28W, Sec 2,3,4,5,12. Dunn Creek, Canyon Creek and Silver Butte areas.	Seeking Public Comment	September 2001	2001	Dick Harlow
23	Special uses	Young road request. Includes reconstruction of 1.2 miles of existing road on FS lands. Formerly known as Pipe Creek private road.	T31N, R31W, Section 21. Pipe Creek area. May be included in Pipestone decision.	Analyzing Effects	October 2001	2001	Dick Harlow



24	Fuels	Silver Butte underburning of 1000 acres	T26N, R30W, Sections 13, 14, 24. T26N, R29W, Sections 17, 18. Silver Butte area.	Analyzing Effects	April 2001	2001	Glen Gibson
----	-------	---	--	-------------------	------------	------	-------------

**CABINET RANGER DISTRICT**, 2693 Highway 200, Trout Creek, MT 59874 - Phone: 406-827-3533, Fax: 406-827-3203 **NEWSPAPER OF RECORD: DAILY INTERLAKE, Kalispell, MT**

MAP KEY	TYPE OF PROJECT	NAME OF PROJECT	LOCATION	NEPA STATUS	ANTICIPATED DECISION DATE	YEAR ACTIVITY TO START ON GROUND	CONTACT PERSON
25	Timber Sale	Whitepine Creek EIS 33,000 CCF (15MMBF). Project includes up to 52 miles road decommissioning. Possible Forest Plan amendments for management of old growth, open road densities, cavity nesting habitat. May include Regional Forester approval of openings over 40 acres. NOI published April 23, 1999.	T22N, R32W, Sec 4,5: T23N, R31W, Sec 3-11, 14-24, 27-30: T23N, R32W, Sec 1-3, 10-17, 20-29, 31-34: T24N, 31W, Sec 31-33: T24N, R32W, Sec 24-26, 35, 36. Whitepine Creek Drainage south of the town of Trout Creek.	Draft EIS expected April 2001	September 2001	2002	John Gubel
26	Recreation	Berray Mountain Trail #967 Reroute Construction (1/2 mile)	T27N, R33W, Sec 12	Analyzing Effects	April 2001	2001	Bruce Haflich
27	Recreation	Elk Lake Trailhead Improvement	T25N, R30W, Sec 25 Simms Creek area, Vermilion River	Analyzing Effects	April 2000	2001	Bruce Haflich
28	Recreation	Northfork Bull/ Middle Fork Bull Trailhead Expansion	T28N, R33W, Sec 1 & 11, Bull River Area.	Analyzing Effects	June 2001	2001	Bruce Haflich
29	Recreation	Bull River Campground Riverbank Stabilization	T28N, R33W, Sec 1 & 11, Bull River Area.	Analyzing Effects	June 2001	2001	Bruce Haflich
30	Special Uses	West Fork Elk Creek Telephone Line	T26N, R34W, Sec 20, Elk Creek Area	Analyzing Effects	April 2001	2001	Bruce Haflich
31	Fuel Reduction	Elk Creek Rural Interface Natural Fuels Reduction	T26N, R34W, Sec 16, 20, 21, 28, 33; T25N, R34W, Sec 2, 3 Elk Creek Area	Seeking Public Comment	April 2001	2001	Robert Lambrecht
32	Fuel Reduction	Administrative Site Fuel Reduction	T24N, R31W, Sec 6 Cabinet Ranger Station Administrative Site	Seeking Public Comment	June 2001	2001	John Head
33	Fuel Reduction	Tuscor Face Pine Restoration	T24N, R32W, Sec 17, 18, 19, 20 Minton Peak Area	Seeking Public Comment	July 2001	2001	John Head
*	Pre-commercial Thinning	Cabinet District Pre-commercial Thinning FY01	Various locations. Approximately 240 acres.	Developing proposed action	June 2001	2001	Gene Newell

**KOOTENAI SUPERVISORS OFFICE**, 1101 US Hwy 2 West, Libby, MT 59923 - Phone: 406-293-6211, Fax: 406-293-6418 **NEWSPAPER OF RECORD: DAILY INTERLAKE, Kalispell, MT**

MAP KEY	TYPE OF PROJECT	NAME OF PROJECT	LOCATION	NEPA STATUS	ANTICIPATED DECISION DATE	YEAR ACTIVITY TO START ON GROUND	CONTACT PERSON
34	Minerals	STERLING; Copper/ Silver Mine	T26N, R32W; Rock Creek. Includes FP amendments	Responding to Comments	July 2001	2001	John McKay
35	Land Exchange	Stimson Land Exchange	Portions of: T29N, R33W, Sec19; T31N, R34W, Sec 2; T32N, R34W, Sec 26;	Decision Pending	March 2001	2001	Tom Grabinski
*	Fuels	Forestwide Fuels Reduction	Forestwide (site specific locations available upon request)	Revising EA	April 2001	2001	Joe Krueger
*	Travel Management/ Forest Plan Amendment	BLM and FS Off-Highway Vehicle Forest Plan Amendment / EIS for MT, ND and Portions of SD	All BLM and FS lands in MT, ND and portions of SD excluding lands administered by Region 2 of the FS.	Appeal Period ends March 19, 2001	December 2000	2001	Jerry Majerus BLM (406-538-1924)