



United States
Department of
Agriculture

Forest
Service

Kootenai National Forest
406 293-6211

Forest Supervisor's Office
1101 US Highway 2 West
Libby MT 59923

File Code: 1950

Date: December 3, 2001

The Kootenai National Forest is involved in many programs and activities. Enclosed you will find information about projects for which we have a specific proposal, and are in the process of analyzing as directed by the National Environmental Policy Act (NEPA).

The projects are arranged in a table format and are sorted by Ranger District, by type of project, and by date expected for each decision for each project. There are several points in the planning process during which you can be the most helpful and influential, but exact steps and timing may vary depending on the type and complexity of the project. For example, the whole planning process may only take a few days for small, non-complex projects, or several years for large complex projects such as a major mining proposal. Nevertheless, there are some basic steps we go through for every project. The enclosure labeled "Project Planning Process and Where You Fit In" describes these steps and identifies what you can do to be involved. It is important for you to understand this process so that you may receive the environmental documents in which you are interested. I want to stress that your participation in these activities, in a timely manner, can promote better decisions by helping us better understand alternatives to our proposals and to evaluate their implications on the land and the adjacent communities.

If you would like more information on a specific project, please contact the district or forest contact person listed for each project.

Sincerely,

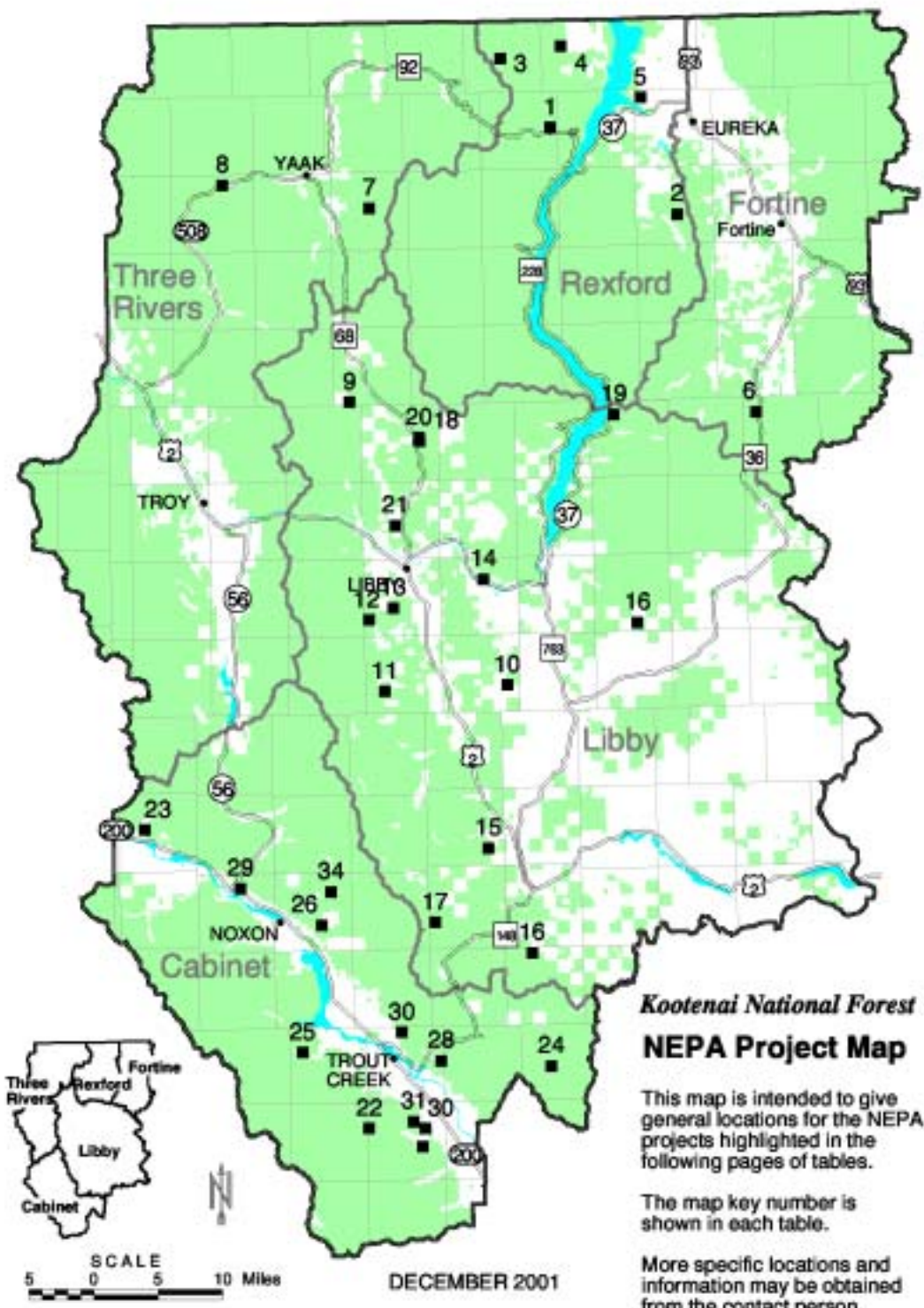
BOB CASTANEDA
Forest Supervisor

enclosure



THE PROJECT PLANNING PROCESS & WHERE YOU MIGHT FIT

ANALYSIS STEP	PARTICIPATION OPTIONS
Identify need for project - Forest Service, business or individual suggests a project	Bring need for a project to the attention of Forest Service
Develop detailed project proposal (Forest Service or other project proponent)	Develop project proposal
Scoping - solicit public comment on the proposal (how it might affect forest resources & uses; how the project could be done better). This defines the scope of environmental analysis needed and the range of alternatives that should be considered	Comment on proposal - suggest issues, alternatives or mitigation measures to reduce impacts on the environment
Develop range of alternatives based on the issues raised during scoping. One alternative is to stay with the status quo (No Action)	Suggest variations to the original proposal
Initiate public comment process which includes a 45 day comment period for Draft EIS's and 30 day comment period for EA's and timber sales that can be categorically excluded. A copy of the EIS or EA will be mailed to those who requested a copy and to those who have participated in the environmental analysis process. A legal notice, requesting comments, will be published in the Daily Interlake, Kalispell, MT, which is our newspaper of record (36 CFR 215.5)	Provide comments on the environmental analysis. See 36 CFR 215.6 for description of information to provide
Notice of decision will be published in the newspaper of record. Copies of the decision document will be sent to those who submitted comments on the proposed action either before or during the comment period identified above (36 CFR 215.9)	Review decision: exercise option to appeal through administrative process
Appeal period will be open for 45 days following legal notice of decision in the newspaper except if no one expressed interest and there is no change from the proposed action. (36 CFR 215.10)	File Notice of Appeal (see section 36 CFR 215.14 for contents of an appeal) NOTE: Only those who commented through the process described above or expressed interest will be able to appeal. (36 CFR 215.11)
Implement the project	Contribute labor, equipment or funding
Monitor & evaluate project results	Provide feedback on the project



QUARTERLY SCHEDULE OF PROPOSED ACTIONS – December 2001

REXFORD RANGER DISTRICT, 1299 Highway 93 North, Eureka, MT 59917 - Phone: 406-296-2536, Fax: 406-296-2588 **NEWSPAPER OF RECORD: *DAILY INTERLAKE***, Kalispell, MT

MAP KEY	TYPE OF PROJECT	NAME OF PROJECT	LOCATION	NEPA STATUS	ANTICIPATED DECISION DATE	YEAR ACTIVITY TO START ON GROUND	CONTACT PERSON
1	Timber Sale, Prescribed Burning, Thinning, Watershed Restoration	Gold/Boulder/Sullivan	T34-36N, R28, 29W, PMM, Lincoln Co., MT; Gold, Boulder, and Sullivan drainages. May include road decommissioning. Includes Forest Plan Amendments	Preparing Final EIS	December 2001	2001	Ron Komac
2	Timber Sale, Prescribed Burning, Watershed Restoration	Pink Stone EIS	T 34-36N, R27-29W, PMM, Lincoln Co., MT: Pinkham Creek drainage, may include road decommissioning. Includes Forest Plan Amendments.	Decision Issued October 5, 2001	Completed	2001	Ron Komac
3	Timber Sale, Prescribed Burning, Watershed Restoration	Young J	T37N, R29W, PMM, Lincoln Co., MT; Young Creek drainage.	Responding to Public Comment	December 2001	2001	Ron Komac
4	Special Uses	Young Creek FRTA – State Access	T37N, R28W, Sec 17. Young Creek Drainage	Project on Hold	July 2001	2001	Jim Kilroy
5	Special Uses	Ingram Road Access	T36 N, R 27 W Sec 6 Douglas Hill Area	Project on Hold	August 2001	2001	Jim Kilroy

FORTINE RANGER DISTRICT, P.O. Box 116, Fortine, MT 59918 - Phone: 406-882-4451, Fax: 406-882-4835 **NEWSPAPER OF RECORD: *DAILY INTERLAKE***, Kalispell, MT

MAP KEY	TYPE OF PROJECT	NAME OF PROJECT	LOCATION	NEPA STATUS	ANTICIPATED DECISION DATE	YEAR ACTIVITY TO START ON GROUND	CONTACT PERSON
6	Timber Sale	Fortine Timber Sales and Associated Activities EIS; 22000-46000 CCF (9-19 MMBF)	T33N, R26W, Sec. 21-22, 27-29, 31-35; T32; T32N, R28W. Sections 3-11, 14-36; T32N, R27W, Sections 1-2, 11-14, 23-26; T31N, R26W, Sections 3-5, 8-10, 15, and 16.	Developing Proposal	September 2002	2003	Joleen Dunham

THREE RIVERS RANGER DISTRICT, 1437 N. Highway 2, Troy, MT 59935 - Phone: 406-295-4693, Fax: 406-295-4142 **NEWSPAPER OF RECORD: *DAILY INTERLAKE***, Kalispell, MT

MAP KEY	TYPE OF PROJECT	NAME OF PROJECT	LOCATION	NEPA STATUS	ANTICIPATED DECISION DATE	YEAR ACTIVITY TO START ON GROUND	CONTACT PERSON
7	Timber Sale, Planting, Watershed Improvement	Kelsey-Beaver	Portions of T35N, R32W; T35N, R31W; and T36N, R30W; Lincoln County, Montana. Also includes planting in Mt. Henry Roadless Area. May include Forest Plan Amendment, openings over 40 acres, and road decommissioning..	FEIS/ROD pending	December 2001	2002	Mike Giesey
8	Special Use Permit/Easement	Cool Creek Access	T35N, R32W, Secs. 2, 3, 4, Lincoln County, Montana; across Yaak River from town of Yaak.	Analyzing Effects	April, 2002	2002	Mark Natale

MAP KEY	TYPE OF PROJECT	NAME OF PROJECT	LOCATION	NEPA STATUS	ANTICIPATED DECISION DATE	YEAR ACTIVITY TO START ON GROUND	CONTACT PERSON
9	Timber Sale	Pipestone 13,170 CCF (5.4 MMBF). May include Forest Plan ORD amendment. Includes prescribed burning in the Gold Hill West Roadless Area, 65 miles of road decommissioning, .47 miles of road construction on FS lands by Plum Creek, 2.18 miles of reconstruction on FS lands by the FS and private landowners, 1000 feet of snowmachine trail construction, and .60 miles of temporary road construction.	T34N, R32W, Section 36; T34N, R31W, Sections 11,14,15,21-36; T34N, R30W, Section1; T33N, R32W, Sections 1,12,23-5,36; T33N, R31W, Sections 1-36; T33N, R30W, Sections 18-20,29-33; T32N, R32W, Sections 1,12-13,24,25,36; T32N,R31W,Sections 1-36; T32N, R30W, Sections 5-10,15-21,29-32; T31N, R31W, Sections 1-22,29,30; T31N, R30W, Sections 4-9,17,18. Pipe Creek area.	Analyzing Effects	March 2002	2002	Tim Charnon
10	Timber Sale	South McSwede 5975 CCF (2.45 MMBF). Includes 590 acres of precommercial thinning, 3 miles of temp road construction, private land access, and 9 miles of road decommissioning.	T29N,R30W, Sections 28,29,32-34; T28N,R30W, Sections 1,2,9-15,22-27,33-36; T28N, R29W, Sections 7,8,18; T27N, R30W, Sections 4,5,9.	Seeking Public Comment	April 2002	2002	Tim Charnon
11	Fuels Reduction	Treasure Interface Fuels Reduction. Approximately 282 of commercial thinning to reduce fuel loads along Granite Lake Creek road and adjacent subdivisions.	T30N, R31W, Sections 22, 27, 28 and 33-35. Granite Lake Road area	Analyzing Effects	February 2002	2002	Tim Charnon
*	Silviculture	Tree pruning	Libby District	Analyzing Effects	March 2002	2002	Tim Charnon
12	Minerals	Prospect Hill. Minerals exploration. Project includes opening of a closed road, construction of <1mi. of road and the re-opening of 2 closed mine portals.	T30N, R31W, Section 33,32,29	Seeking Public Comment	April 2002	2002	Bobbie Lacklen
*	Minerals	Mineral Material Sources. Expansion and reclamation of 79 existing gravel pits.	Libby Ranger District	Analyzing Effects	January 2003	2002	Bobbie Lacklen
13	Recreation	Flower Creek parking lot expansion.	T30N, R31W, Section 21. Flower cross country ski area.	Decision 9/14/01	Completed	2001	Jon Jeresek
14	Recreation/ Minerals	Re-Reg. Mineral removal associated with boat ramp, parking and restroom construction.	T30N, R30W, Section 10. Adjacent to Highway 37 at the 8.7 mile post.	Analyzing Effects	January 2002	2003	Bobbie Lacklen
15	Recreation	Bear Creek X-C Ski Trail maintenance.	T29N, R31W, Section 13. Bear Creek cross country ski area.	Seeking Public Comment	June 2002	2002	Jon Jeresek
16	Special Uses	Installation of 7 miles of fiberoptic lines where existing lines occur. May include road improvements.	T25N, R29W, Sections 11,12; T25N, R30W, Sections 5,6; T26N, R30W, Sections 33, 34, 35, 36; T26N, R31W, Sections 17,18, 19, 30; T30N, R27W, Section 34; T30N, R28W, Sections 2,3,4,5,12. Dunn Creek, Canyon Creek and Silver Butte areas.	Decision 9/01	Completed	2001	Dick Harlow
17	Special uses	Bear Lakes access request. Livestock use of existing trail and 200 feet of associated trail construction accessible to livestock. Trail accesses private lands.	T26N, R30W, Section 30. Silver Butte area.	Seeking Public Comment	March 2002	2002	Dick Harlow

LIBBY RANGER DISTRICT: continued

MAP KEY	TYPE OF PROJECT	NAME OF PROJECT	LOCATION	NEPA STATUS	ANTICIPATED DECISION DATE	YEAR ACTIVITY TO START ON GROUND	CONTACT PERSON
18	Special uses	Beebe road request. Includes reconstruction of 400 feet of existing road on FS lands.	T32N, R31W, Section 14. Pipe Creek area. May be included in Pipestone decision.	Analyzing Effects	June 2002	2002	Dick Harlow
19	Special uses	Spring Creek road access. Includes ¼ mile road construction.	T32N, R28W, Section 5. Volcour Gulch area.	Seeking Public Comment	June 2002	2002	Dick Harlow
20	Special uses	Burrier road request. Includes reconstruction (widening) of 200 feet of existing road on FS lands.	T32N, R31W, Section 14. Pipe Creek area. May be included in Pipestone decision.	Analyzing Effects	June 2002	2002	Dick Harlow
21	Special uses	Young road request. Includes reconstruction of 1.2 miles of existing road on FS lands. Formerly known as Pipe Creek private road.	T31N, R31W, Section 21. Pipe Creek area. May be included in Pipestone decision.	Analyzing Effects	June 2002	2002	Dick Harlow

CABINET RANGER DISTRICT, 2693 Highway 200, Trout Creek, MT 59874 - Phone: 406-827-3533, Fax: 406-827-3203 **NEWSPAPER OF RECORD:** *DAILY INTERLAKE, Kalispell, MT*

MAP KEY	TYPE OF PROJECT	NAME OF PROJECT	LOCATION	NEPA STATUS	ANTICIPATED DECISION DATE	YEAR ACTIVITY TO START ON GROUND	CONTACT PERSON
22	Timber Sale	Whitepine Creek EIS 33,000 CCF (15MMBF). Project includes up to 52 miles road decommissioning. Possible Forest Plan amendments for management of old growth, open road densities, cavity nesting habitat. May include Regional Forester approval of openings over 40 acres. NOI published April 23, 1999.	T22N, R32W, Sec 4,5: T23N, R31W, Sec 3-11, 14-24, 27-30: T23N, R32W, Sec 1-3, 10-17, 20-29, 31-34: T24N, 31W, Sec 31-33: T24N, R32W, Sec 24-26, 35, 36. Whitepine Creek Drainage south of the town of Trout Creek.	Draft EIS expected December 2001	May 2002	2003	John Gubel
23	Timber Sale	Fat Blue Eddy EA	T27N, R34W, Sec 7-10, 15-18, 21-23, 24,25; Blue Cr., and Big Eddy Cr. drainages near Heron, MT	Developing Proposed Action	September 2002	2003	John Head
*	Pre-commercial Thinning	Cabinet District Pre-commercial Thinning FY01 DM	Various locations across the District. Approximately 1139 acres.	Decision Memo signed 9/01	Complete	2001	Gene Newell
24	Prescribed fire	Upper Vermilion Elk Habitat Improvement DM	T24,25 N; R29W; Sec. 35,1,2,9,10,11,14,15,16,21,22	Scoping and analysis of effects	Feb 2002	2002	Steve Johnsen
25	Stream Improvement	Trout Creek Riparian Revegetation DM	T24N; R32W; Sec. 24	Scoping and analysis of effects	Jan 2002	2002	Doug Grupenhoff

CABINET RANGER DISTRICT: continued

26	Stream Improvement	Rock Creek Sediment Abatement DM	T26N; R32W; Sec. 27	Scoping and analysis of effects	Jan 2002	2002	Doug Grupenhoff
27	Recreation	East Fork Trout Creek Trail Improvement	T23N; R32W; Sec 18-19	Analyzing Effects & scoping	April 2002	2002	Bruce Haflich
28	Recreation	Water Hill Trail Improvement	T24N; R31W; Sec 23, 24 T24N; R30W; Sec 19	Analyzing Effects & scoping	April 2002	2002	Bruce Haflich
29	Recreation	Bull River Campground Improvement	T26N; R32W; Sec 3, 10	Analyzing Effects & scoping	Jan 2002	2002	Bruce Haflich
30	Lands	Cox Land Exchange	T22N; R30W; Sec 5 (NFS land) T23N; R31W; Sec 11 (private)	Scoping	June 2002	2002	Bruce Haflich
*	Timber stand improvement	Whitepine Pruning Project	Various plantations (call for details)	Analyzing Effects	March 2002	2002	Gene Newell
*	Timber stand improvement	Seed Production Area Maintenance Project	Various plantations (call for details)	Analyzing Effects	March 2002	2002	Gene Newell
*	Timber stand improvement	Vermilion Mistletoe Sanitation Project	Various plantations in the Vermilion River drainage (call for details)	Analyzing Effects	March 2002	2002	Gene Newell
31	Special Uses	Whitepine Telephone Line DM	T23N, R31W; Sec. 16	DM signed 9/18/01	Complete	2001	Bruce Haflich

KOOTENAI SUPERVISORS OFFICE, 1101 US Hwy 2 West, Libby, MT 59923 - Phone: 406-293-6211, Fax: 406-293-6418 **NEWSPAPER OF RECORD: DAILY INTERLAKE, Kalispell, MT**

MAP KEY	TYPE OF PROJECT	NAME OF PROJECT	LOCATION	NEPA STATUS	ANTICIPATED DECISION DATE	YEAR ACTIVITY TO START ON GROUND	CONTACT PERSON
32	Minerals	STERLING; Copper/ Silver Mine	T26N, R32W; Rock Creek. Includes FP amendments	FEIS released 9/14/01 Preparing ROD	December 2001	2002	John McKay
*	Fuels	Forestwide Fuels Reduction	Forestwide (site specific locations available upon request)	Responding to Comments	December 2001	2002	Joe Krueger (406-283-7774)
*	Grizzly Bear Forest Plan Amendments	Forest Plan Amendments For Access Management in Grizzly Bear Habitat Within Selkirk/Cabinet-Yaak Recovery Zones.	Portions of Lolo NF, Idaho Panhandle NF, and Kootenai NF.	Draft EIS Public Comment Period ends 12/31/01	February 2002	2002	Rob Carlin (406-882-4451)
*	Northern Rockies Lynx Amendment	Forest Plan Amendments for Lynx	18 National Forests in Regions 1, 2 and 4.	Beginning Public Scoping Scoping period ends 12/10/01	July 2002	2002	John Haber (406-329-3399)