

Shawnee National Forest
Hiker/Equestrian Trails Designation Project
Interim Trail Map 2008
Eagle Creek and Big Grand Pierre Creek
Watersheds
Herod Vicinity

Map 1

NOT FOR RESALE

Shawnee National Forest Rules for the Big Grand Pierre Creek, Eagle Creek, Lusk Creek and Upper Bay Creek Watersheds
(the areas depicted on this map)

What is an Interim Trail?
Many of the trails that were designated by the 2006 Record of Decision for the Trails Designation Project have been identified as needing reconstruction. Some trails will even require realignment to a new location in order to maintain them to an all weather standard. Interim trails are routes that will be used temporarily until these realigned trails can be constructed. Interim trails exist in all four of the watersheds and have been chosen from among existing trails to complete loops and to make available some of the most popular riding destinations. As construction is completed and new trails are available these interim routes will be closed and rehabilitated. The Interim Trails Map will be updated periodically to show where new trail segments have been completed. Please visit any Shawnee National Forest office to obtain the most up-to-date version of the map.

Trail Signs and Symbols
Since 2006 hundreds of new trail signs have gone up in the project area. Look near the junctions of designated trails for wooden signs with routed numbers and letters.

River to River Trail #001

County Road #423
Upper Bay Creek Trail #30

River to River Trail #001

Lusk Creek Trail #457
High Point

In areas outside of wilderness the trail signs have rectangular sides. In addition to signs at junctions, non-wilderness trails may also have reassurance markers at intervals along the trail. These markers will generally appear as follows:

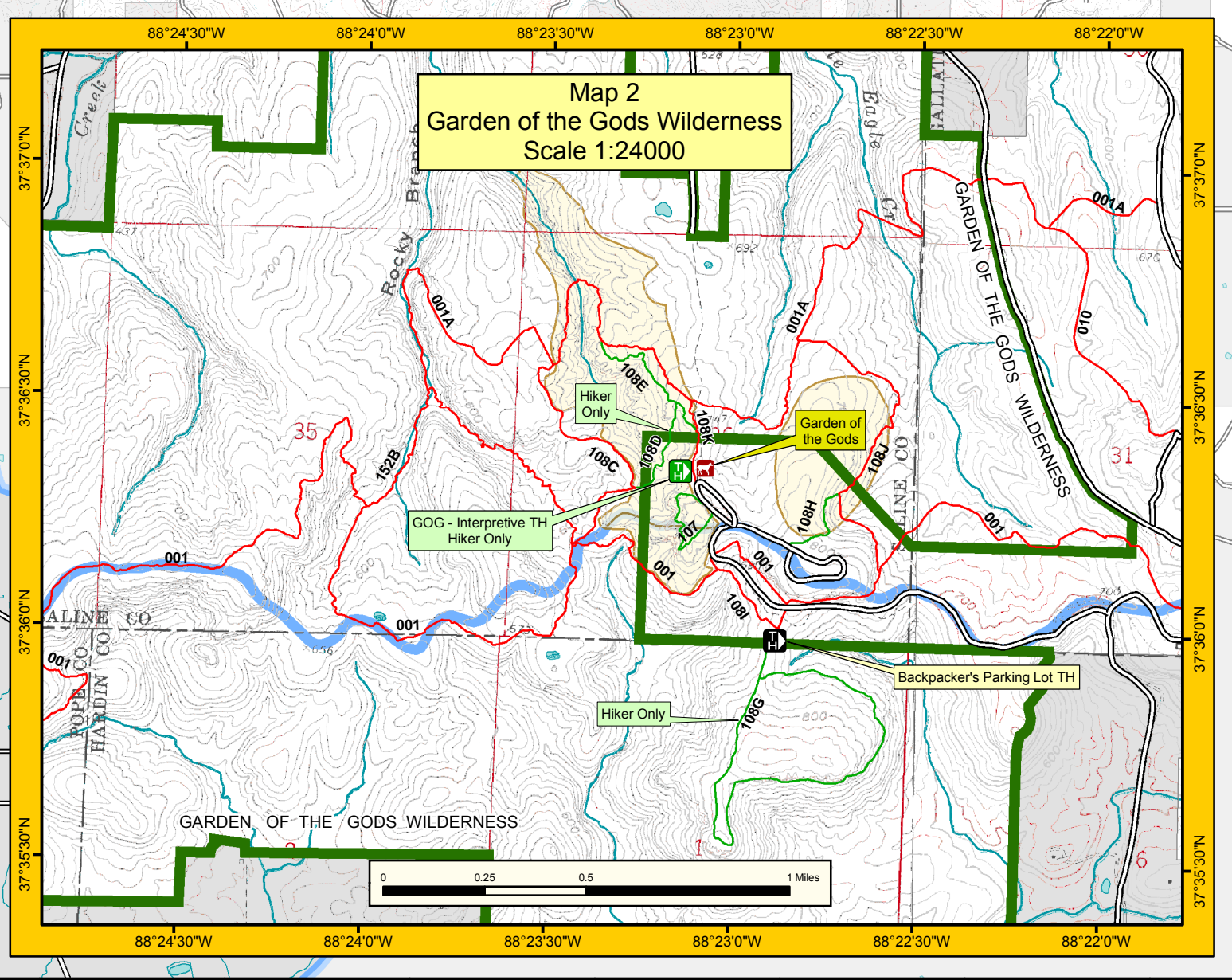
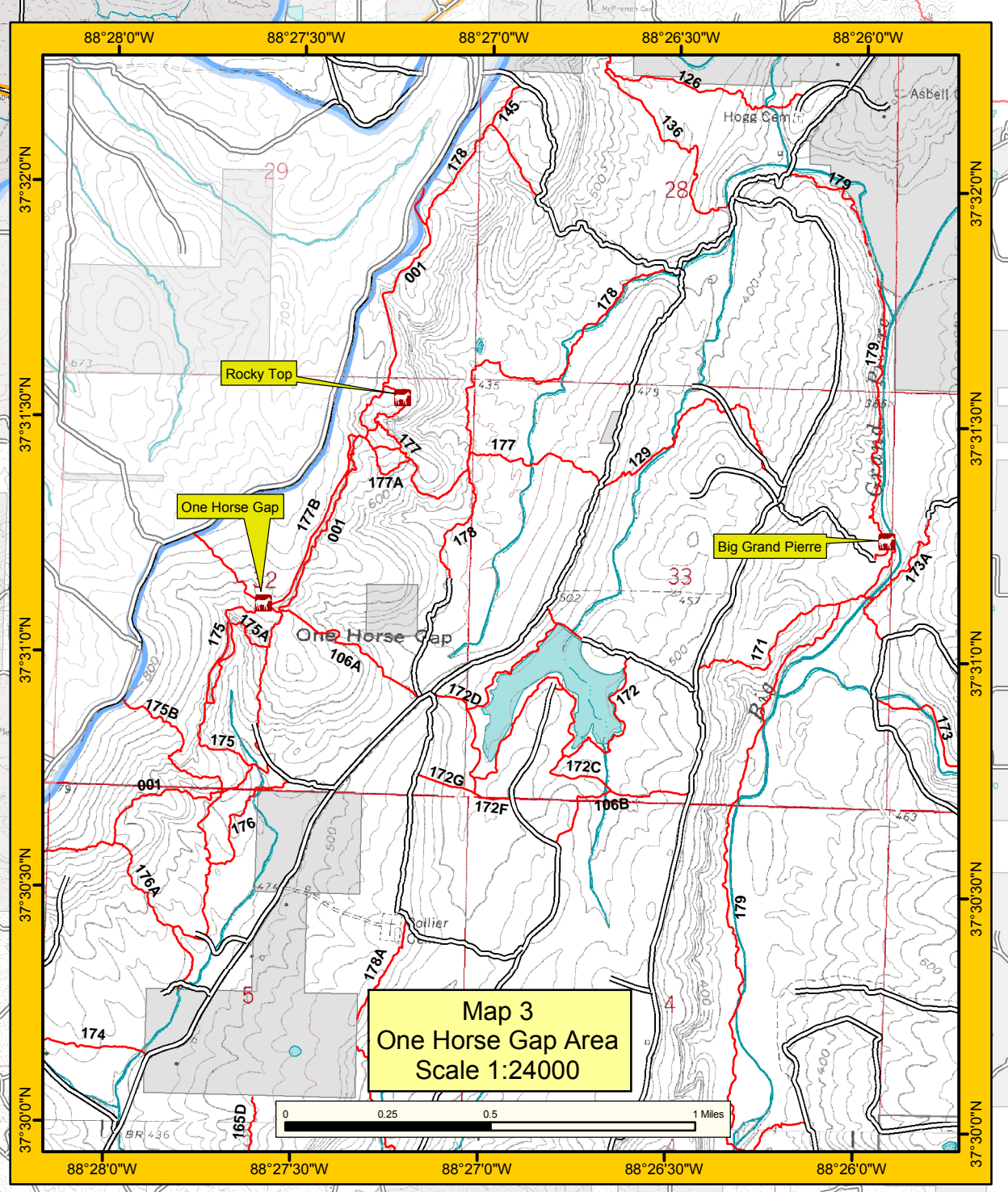
- White Diamond - Hiker/Equestrian trails
- Blue Diamond - Hiker only trails
- Blue Square over Blue Rectangle by itself or inside of a White Diamond - River to River Trail (Hiker/Equestrian)

Inside of the Lusk Creek, Bay Creek and Garden of the Gods Wilderness Areas, where the recreational experience is managed to be more primitive and challenging trails will usually be signed at trail junctions only. Look for five sided signs such as that pictured above.

Interim Horse Highlines
In several places throughout the four watersheds volunteers have placed high lines so that equestrians would have a place to tie stock without causing damage to live trees. Over time some of these areas will be moved further from the trail, away from private land or to a spot with more suitable soils. These areas are shown with the Interim Horse Tie Up symbol. Until the areas can be moved, please use the existing highline areas.

Ride-Through Only Trail at Saltpeper Cave
Trail #486 past Saltpeper Cave, and portions of Trail #481 past Natural Bridge in the Lusk Creek Wilderness have been designated as ride-through only. Equestrians are welcome to ride this trail but are asked not to stop at Saltpeper Cave or at Natural Bridge. For longer visits to these two sites equestrians are asked to tie their horses at the high line area just east of Natural Bridge and walk back to the sites.

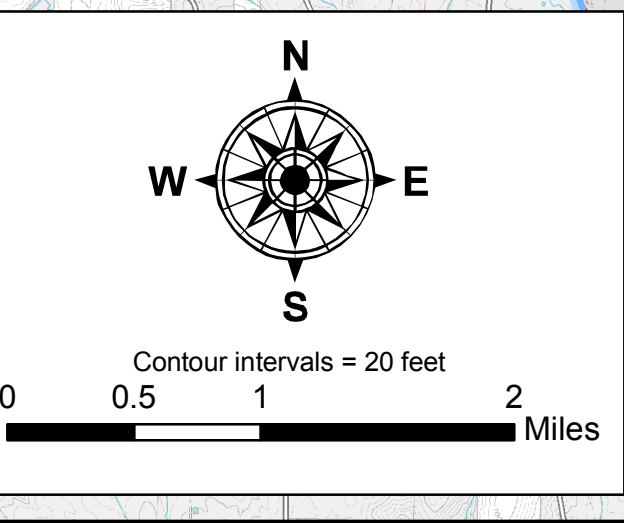
- Safety Tips**
- Take extra precautions during hunting season.
 - Let a family member or friend know where you are going and when you expect to return.
 - Many of the trails depicted on this map intersect with roads. If you choose to use a road as a part of your hike or ride be aware of traffic laws and traffic safety.
 - Expect the unexpected in the backcountry. Consider carrying the following safety items among the gear you take to the back country:
 - A map and compass (and the ability to use them)
 - Extra food and drinking water
 - Rain gear
 - Extra clothing layers during cooler seasons
 - Flashlight
 - Pocketknife
 - First-aid kit
 - Protection from sun and insects
 - Waterproof matches or a lighter



Where can I Tie My Horse?

Horses should not be tied directly to trees. High Lines have been constructed by volunteers in the following locations to provide places for equestrians to stop and tie off their horses. When stopping outside of one of these areas please cross tie or otherwise restrain your animals out of reach of live trees.

Big Grand Pierre Watershed Highlines			
High Line	Latitude	Longitude	Access Trail
Rocky Top	37° 31' 31" N	88° 27' 12" W	177, 001
One Horse Gap	37° 31' 05" N	88° 27' 32" W	001, 106, 175, 177
Hogg Cemetery	37° 32' 35" N	88° 26' 34" W	169
Grand Pierre	37° 31' 15" N	88° 25' 55" W	179
Eagle Creek Watershed Highlines			
High Line	Latitude	Longitude	Access Trail
Garden of the Gods	37° 36' 20" N	88° 23' 05" W	108K
Buzzard Point	37° 36' 01" N	88° 21' 33" W	001
Initial Tree	37° 36' 25" N	88° 17' 47" W	150, 005



What is a non-native invasive species?
Non-native invasive species are plants and animals that are introduced outside of their normal range that reproduce rapidly and cause major changes to the areas where they become established. In the absence of environmental or competitive stresses that normally limit their distribution plant species such as kudzu or garlic mustard can completely overtake native vegetation. In Midwestern waterways, zebra mussels are seriously diminishing populations of native aquatic species. Meanwhile, the emerald ash borer is slowly munching its way out of the upper Midwest, killing the ash trees of the native deciduous forest.

The Shawnee National Forest has many non-native invasive species that inhabit the forest floor. Some, like autumn olive or multiflora rose are well established and will be nearly impossible to eradicate. They can be seen adjacent to trails throughout the area. The species shown here, garlic mustard, kudzu, Chinese Yam and Nepalese browntop are less ubiquitous and their spread could yet be stopped.

Non-Native Invasive Species

What can I do to limit the spread of non-native invasive species?
Please help your public land managers to stop the spread of non-native invasive species by adopting the following practices:

- Learn to identify non-native invasive species, especially the ones depicted here, and watch for them.
- Report any infestation to the local land manager. For sightings on the Shawnee National Forest call 618-658-1312.
- Check for seeds and plant parts and clean equipment, boots, gear clothing and animals, including dogs, prior to riding or hiking, between trips and, before leaving an infested area.
- Use weed-free feeds beginning a few days prior to, and all during your visit to public land.
- Dispose of seeds in a plastic bag or in a trash can.
- Avoid transporting firewood or other materials that could harbor emerald ash borers or other invasive pests.

If I'm a trail user, why should I care?
Non-native invasive species pose a threat to public lands all over the country. When they form dense stands they leave areas undesirable for hiking and camping. Their eradication is time consuming and expensive and they have been the cause of restrictions on recreational access to some areas. These species alter native plant and animal communities and eliminate opportunities for anglers, mushroomers, birders, hunters and other nature lovers.

Non-native invasive species are transported by many vectors including wind, water and forest animals. The fact that some species are prevalent along trails suggests that these species regularly use recreationists to hitchhike from one place to another. Research has shown that non-native invasive plants can be carried by boots and clothing, on vehicles, including trailers, and in the hair and manure of stock.

Nepalese browntop

Kudzu

Chinese Yam

Garlic Mustard

New in 2008

The Record of Decision for the Trails Designation Project includes the restriction of stock to the designated trail system within the four watersheds depicted on this map. Included on this map are the boundaries of the area where pack or saddle stock use of National Forest is restricted to designated trails. Instead of using the actual watershed divides, the boundaries are generally identified on nearby roads. This was done to make it easier to identify the boundaries on the ground.

Authorized routes for riding or leading a horse or other pack or saddle animal include the designated trails, interim trails, designated stock confinement areas, equestrian trailheads and roads displayed on this Interim Trails Map. For additional information on the restriction to designated trails, the closure order written for enforcement, or for a list of the roads that form the boundary of the closure area, please contact the Shawnee National Forest Office in Harrisburg, IL (618) 253-7114, or Vienna, IL (618) 658-2111.

03.17.2008

Legend Scale 1:48000

- Parking Area (Hiker Only)
- Trailhead (Hiker Only)
- Trailhead
- Horse Camps
- Horse High Line Area
- Interim High Line Area
- Hiker/Equestrian Trails
- Ride Through Only Trail
- Interim Trails
- Hiker Only Trails
- Existing Roads
- Closure Order Boundary
- Streams
- Lusk Creek ZA
- Natural Areas
- Wilderness
- National Forest Land
- Non National Forest Land
- Watershed Boundary

The Forest Service uses the most current and complete data available. GIS data and product accuracy may vary. They may be developed from sources of differing accuracy, accurate only at certain scales, based on modeling or interpretation, incomplete while being created or revised, etc. Using GIS products for purposes other than those for which they were created, may yield inaccurate or misleading results. The Forest Service reserves the right to correct, update, modify, or replace GIS products without notification. The Forest Service will not be liable for any activity involving the information. Additionally, trails on this map may be removed from use due to resource damage. The USDA Forest Service is an Equal Opportunity provider.

Shawnee

National Forest
Illinois

2008

INTERIM TRAILS MAP
TRAILS DESIGNATION PROJECT

NATIONAL FOREST EQUESTRIAN AND
HIKING TRAILS FOR THE EDDYVILLE AND
HEROD, ILLINOIS VICINITY
Hidden Springs Ranger District, Shawnee National Forest
NOT FOR RESALE