

Reykjavik

CPWG/5

Sigurleifur Kristjansson

Isavia

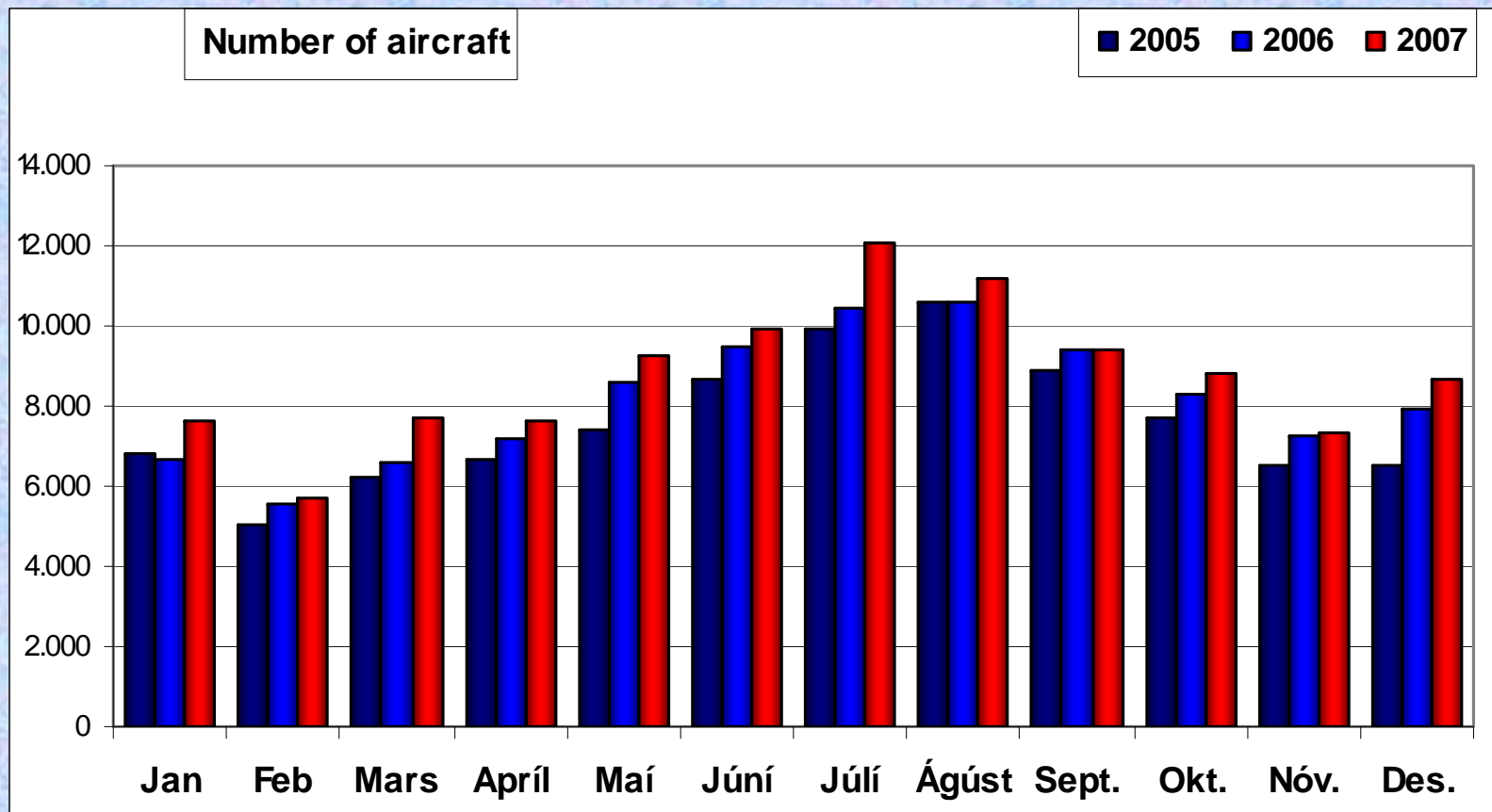
Reykjavik

- Traffic
- CPDLC
- Communications north of 80N
 - Lost Com Procedures.
 - NAT SPG TF - RCP
- SATCOM
- ADS-C
- ADS-B

Total traffic

Number of aircraft through Reykjavik area							
	2003	2004	2005	2006	2007	diff.% 06/07	Accum
Jan	5.220	5.515	6.785	6.635	7.642	15,2%	15,2%
Feb	5.277	5.089	5.044	5.558	5.716	2,8%	9,6%
Mars	5.752	6.317	6.190	6.600	7.687	16,5%	12,0%
Apríl	5.868	6.249	6.668	7.212	7.652	6,1%	10,4%
Maí	6.659	7.032	7.396	8.557	9.273	8,4%	9,9%
Júní	7.470	8.181	8.692	9.494	9.920	4,5%	8,7%
Júlí	8.924	9.459	9.917	10.447	12.110	15,9%	10,1%
Ágúst	8.071	9.027	10.608	10.583	11.173	5,6%	9,4%
Sept.	7.378	8.411	8.906	9.388	9.398	0,1%	8,2%
Okt.	6.551	7.035	7.687	8.272	8.838	6,8%	8,1%
Nóv.	5.908	5.812	6.524	7.233	7.360	1,8%	7,5%
Des.	5.564	6.489	6.553	7.895	8.645	9,5%	7,7%
	78.642	84.616	90.970	97.874	105.414	7,7%	

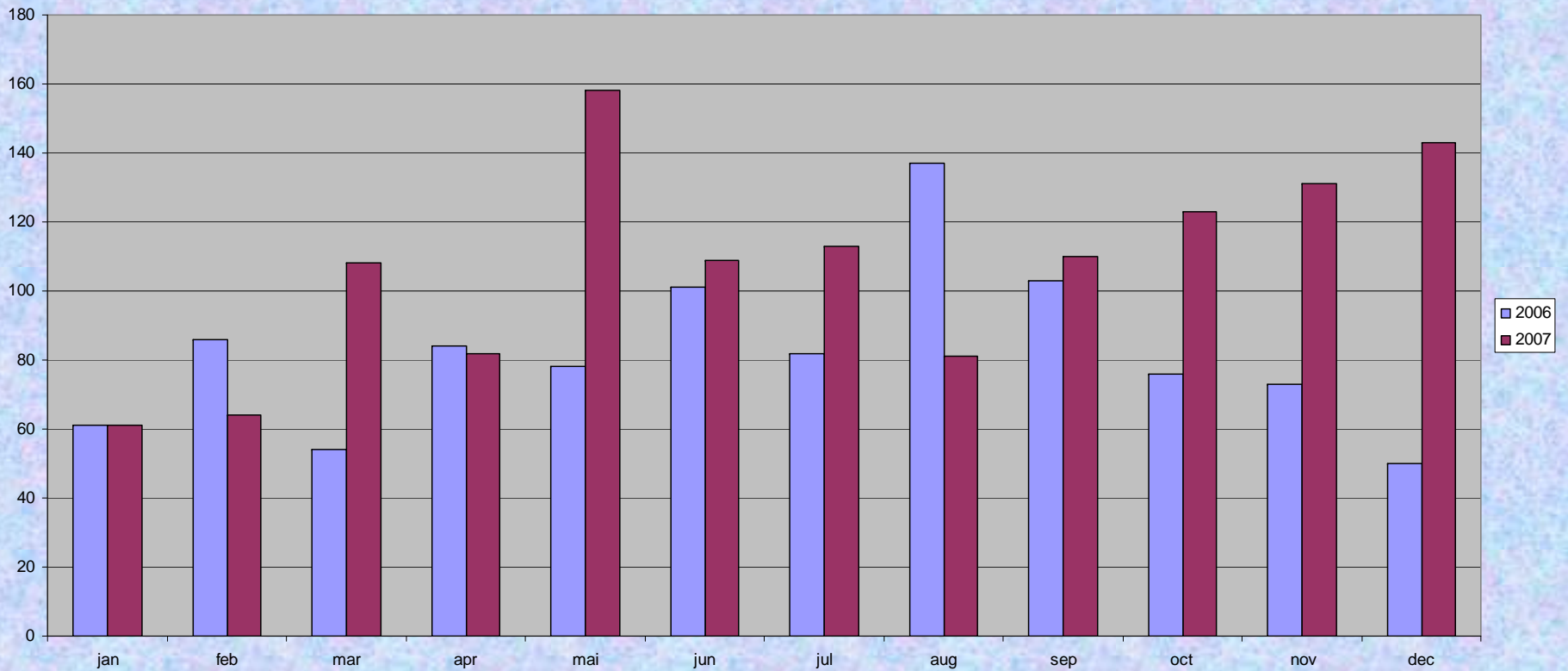
Traffic



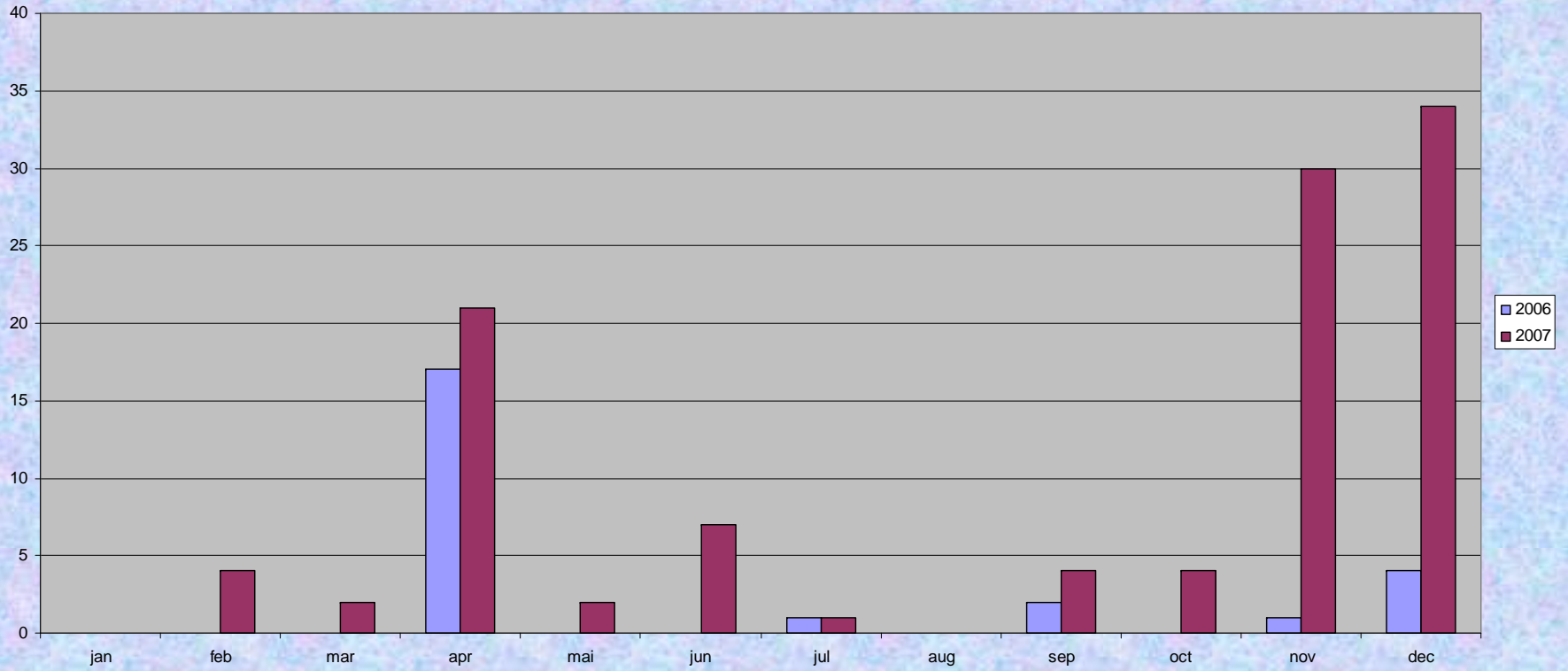
Traffic via ABERI

- Eastbound
 - 2006 – 985
 - 2007 – 1283
- Increase 30%
- Westbound
 - 2006 – 25
 - 2007 – 109
- Increase 336%

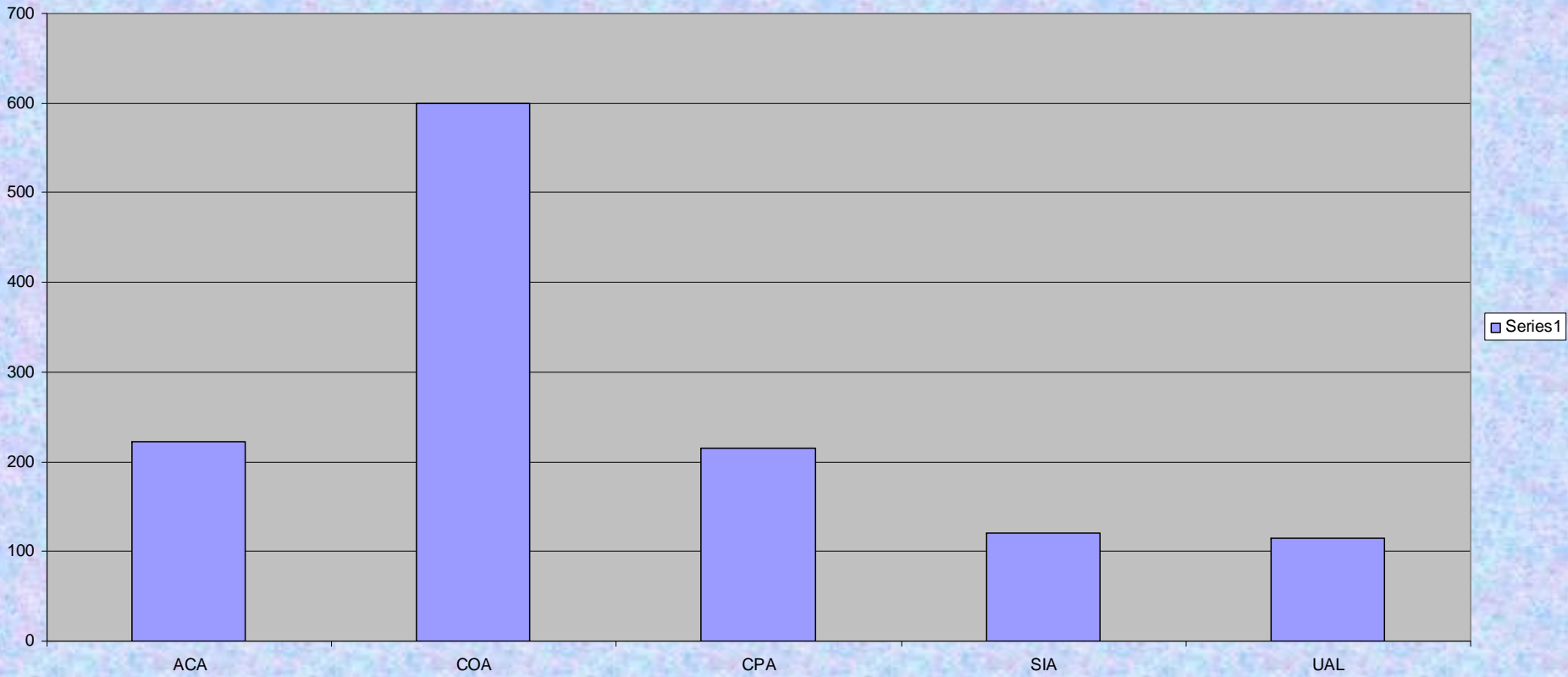
Traffic via ABERI eastbound



Traffic via ABERI westbound



Numer of flights per airline



SATCOM

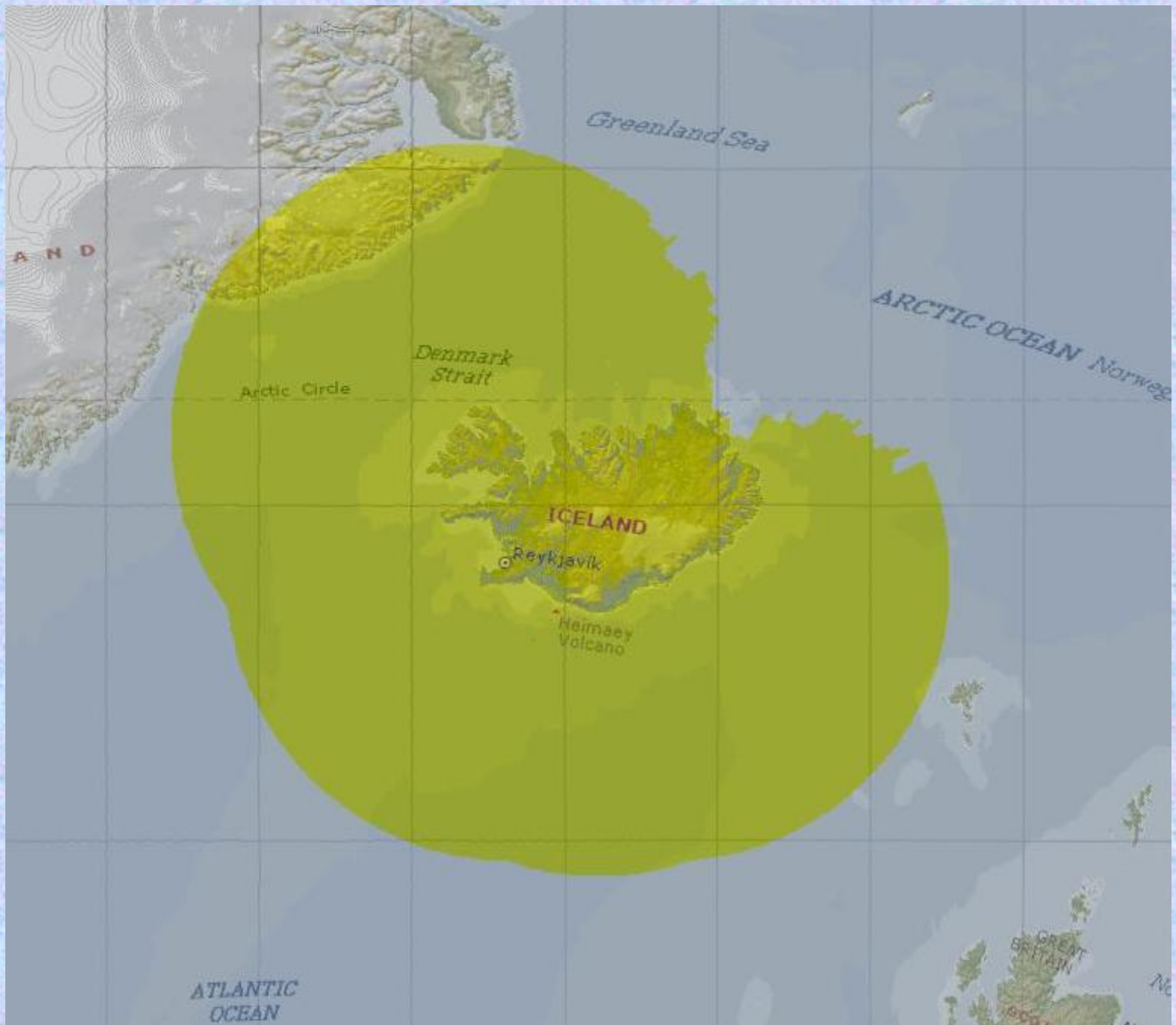
- Automatic correlation in the FDPS between FPL and SATCOM number.
- Need to solve coverage limitations north of 80 North.
- Is Iridium the solution?
- Are there other possibilities?
- What are the views of the operators?

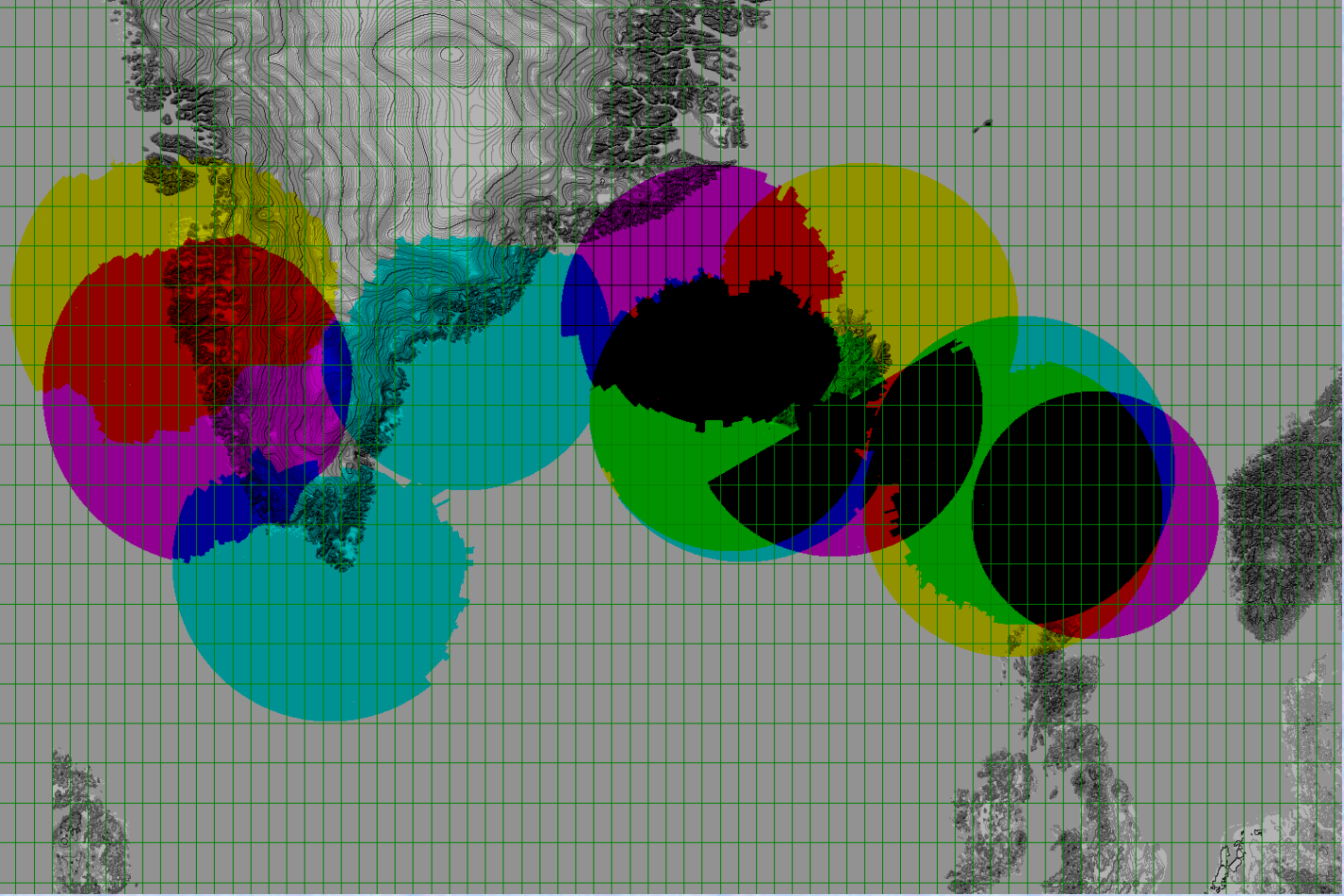
ADS-C

- Will be used more for clearance conformance monitoring.
- Lateral and vertical monitoring.
- Same coverage problems as CPDLC and SATCOM.

ADS-B

- 4 ground stations up and running Iceland
- 2 additional ground stations will be installed in Faroes and;
- 1 ground station in eastern Greenland.





Questions

Thank you