

Trails Non-Wilderness

Trabuco Ranger District (951) 736-1811
Cleveland National Forest



Multi-use single track trails - hiking, mountain biking, equestrian

No motorized vehicles

Chiquito Trail (6W07)

Distance: 6.4 miles. **Difficulty:** Easy to moderate
Elevation: 1,770 ft. to 3,400 ft. **Change:** 900 ft.
Access: The lower trailhead can be accessed from the San Juan Loop Trail and the upper from the Viejo Tie trail.
Trail Notes: Contours across ridge and then up Lion Canyon. The trail climbs out of the head of the canyon and ends at the North Main Divide Road just south of Blue Jay Campground. Steep terrain, poison oak, great views and Chiquito Falls (seasonal). Chiquito basin has wildflowers, large meadows and shaded oaks.

El Cariso Nature Trail (5W10) (Next to Fire Station)

Distance: 1.2 miles. **Difficulty:** Easy
Elevation: 2,570 ft. to 2,690 ft. **Change:** 120 feet
Trail Notes: A self-guided loop begins at the El Cariso Fire Station. The trail features sweeping views, an old mine and the Ca. Firefighters Memorial site.

Falcon Trail (6W10)

Distance: 0.4 miles **Difficulty:** Easy
Elevation change: minor
Trail Notes: Trail connects Falcon group camp to lower Blue Jay campground.

Holy Jim Trail (6W03)

Distance: 4.5 miles. (From parking lot to falls is 2.8 miles, parking lot to Main Divide road is 3 miles).
Difficulty: Moderate to strenuous
Elevation change: 1,900 feet, gain/loss 650 feet.
Access: Trabuco Canyon. Take Live Oak Canyon road to the Trabuco creek wash. Drive up the road, heading east, about 4.5 miles to trailhead parking. High profile vehicles recommended.

Joplin Trail (6W02)

Distance: 6.4 **Difficulty:** Moderate to strenuous.
Elevation change: 2650
Access: Santiago truck trail or North Main Divide road.
Trail notes: Steep grades, narrow. Trail crosses private land.

Ladd Canyon (7W04)

Distance: 1.8 miles. **Difficulty:** Moderate to strenuous
Elevation change: 800 feet
Access: North Main Divide road .5 mile from the Eagle road junction (Eagle is landlocked at bottom).
Trail notes: Trail drops almost a mile to Ladd Canyon spring. Return same route. Trail landlocked on west end.

Los Pinos Trail (6W06)

Distance: 8.2 miles. **Difficulty:** Strenuous
Elevation change: 3,300 feet
Access: The upper trailhead is on North Main Divide road 5.8 miles from Ortega Highway (Hwy 74). The lower trailhead is in Hot Springs Canyon, 1.5 miles beyond the San Juan Fire Station off the Ortega Highway on the Lazy W Ranch. Trail ends on private property. Call the Lazy W Ranch in advance of visit for permission to cross their property. Call (949)728-0141

San Juan Trail (6W05)

Distance: 11.6 miles. **Difficulty:** Moderate to strenuous
Elevation change: 2,600 feet
Access: The lower trail-head is in Hot Springs Canyon, ¾ mile past the San Juan Fire Station. The upper trailhead is at Blue Jay Campground entrance, 4 miles north of the Ortega Highway on Long Canyon Road.

San Juan Loop Trail (5W08)

Distance: 2.1 miles **Difficulty:** Easy
Elevation change: 350 feet
Access: The upper trailhead is off the Ortega Highway (Highway 74), across from the Candy Store. Trail loops along the edge of Upper San Juan Campground and returns to the San Juan Loop parking lot

Trabuco Canyon Trail (6W04)

Distance: 2.6 miles from W. Horsethief to Main Divide. Trabuco/Main Divide/West Horsethief loop is 10.2 miles.
Difficulty: Moderate
Elevation change: 2,300 feet
Access: The lower trailhead is 1.6 miles up the West Horsethief trail. Parking is 1/2 mile east of the Holy Jim parking lot. Narrow unpaved road. The upper trailhead is near Munhall Saddle on North Main Divide road 6.8 mi from Hwy 74.

Viejo Tie (6W09)

Distance: 1.4 miles. **Difficulty:** Easy to moderate
Elevation change: 50 feet
Access: The tie connects the Chiquito trail with the San Juan trail forming a loop.

West Horsethief Trail (6W11)

Distance: 3.4 miles. **Difficulty:** Moderate
Trabuco/Main Divide/West Horsethief loop is 10.2 miles.
Elevation change: 2,200 feet
Access: The lower trailhead is 1/2 mile up road from Holy Jim parking lot.. The upper trailhead is on North Main Divide road 9.4 miles from Hwy 74.

CAMPING IS PERMITTED IN CAMPGROUNDS ONLY



Forest Service
Pacific Southwest
Region

Cleveland National Forest
<http://www.fs.fed.us/r5/cleveland/>

Updated July 2007

Forest system trails not listed are:

Coldwater (6W01) and Horsethief East (5W01)
Public access is blocked on the eastern end.

Plan ahead and prepare.

- Trails are open year round. The best time to visit is October through May – fall through spring. Exceptions: All roads and trails are closed during high fire danger forest closure. Some trails are closed during Arroyo toad breeding season. *Check conditions before you visit.*
- Take a Forest Service trail map with you.
- Stay on designated trails.
- Wear clothing appropriate to your activity and prepare for changing weather conditions.
- Be aware of natural hazards; ticks, poison oak, rattlesnakes, mountain lions, uneven tread, and loose rock are some of the hazards that found along the trails.
- Take plenty of drinking water!
- Leave your itinerary with a friend.

Fire Danger Level: Forest use restrictions are related to the fire danger levels. Please check before you visit the forest. Call the hotline at (619) 593-2183 or log on to www.fs.fed.us/r5/cleveland. No public access during fire closure.

Forest Truck Trails are gated, administrative access roads open to official vehicles only. Hikers, mountain bikers and equestrians need to be cautious as vehicles may also be on the road.

- 2.9 mi Silverado (5S03) (NON-MOTORIZED)
- 8.2 mi Silverado Ridge (5S05) (1st 4.3 mi private)
- 9.5 mi Harding (5S08)
- 8.1 mi Santiago (5S09)

Forest roads open to street legal vehicles and non-motorized use.

- 6.4 miles Bedford Canyon (4S03)
- 8.2 miles Indian (5S01)
- 45.2 miles Main Divide Road (3S04)
- 7.8 miles Maple Springs (5S04)

Be cautious when traveling these roads.

OHV trails are available at Wildomar OHV Area.

Connector roads:

- 8 miles Blackstar - County of Orange
- 6 miles Skyline Drive - County of Riverside
- 5.6 mi Trabuco Canyon - First 5 miles Private

Some forest roads and trails may be closed for resource reasons including for Arroyo Toad breeding season.

Trabuco Ranger District office:

Phone (951) 736-1811 Fax (951) 736-3002
1147 E. Sixth Street Corona, CA 92879

Contact office for information, passes, maps, current forest and road conditions, overnight wilderness permits, and for list of vendors who sell passes and forest maps.

Cleveland National Forest website

[Http://fsweb.cleveland.r5.fs.fed.us](http://fsweb.cleveland.r5.fs.fed.us)

Know and follow all rules and regulations.

Recreation Use Fee Area

Trailhead parking requires parking fees. The Annual Forest Adventure Pass is recommended. Nearest Day Use fees stations are: San Juan Loop parking lot, San Juan trailheads, Holy Jim trailhead, Silverado fire station and at District campgrounds. Place the receipt or your Annual Pass on your dashboard.

Annual Pass: \$30. Day Pass/Day Use fee: \$5

Fees are waived twice each year:

National Trails Day - first Saturday of June

Public Lands Appreciation Day - last Saturday of Sept.

Camp in designated campgrounds ONLY.

San Mateo Canyon Wilderness

Wilderness trails are described in a separate document. Overnight permits are required for the San Mateo Canyon Wilderness. Call the Trabuco Ranger District for a free permit at (951) 736-1811. Please plan ahead.

Santa Ana Mountains

Natural History Association

To learn about the natural history of the Trabuco Ranger District, join us at our monthly public hikes and events.

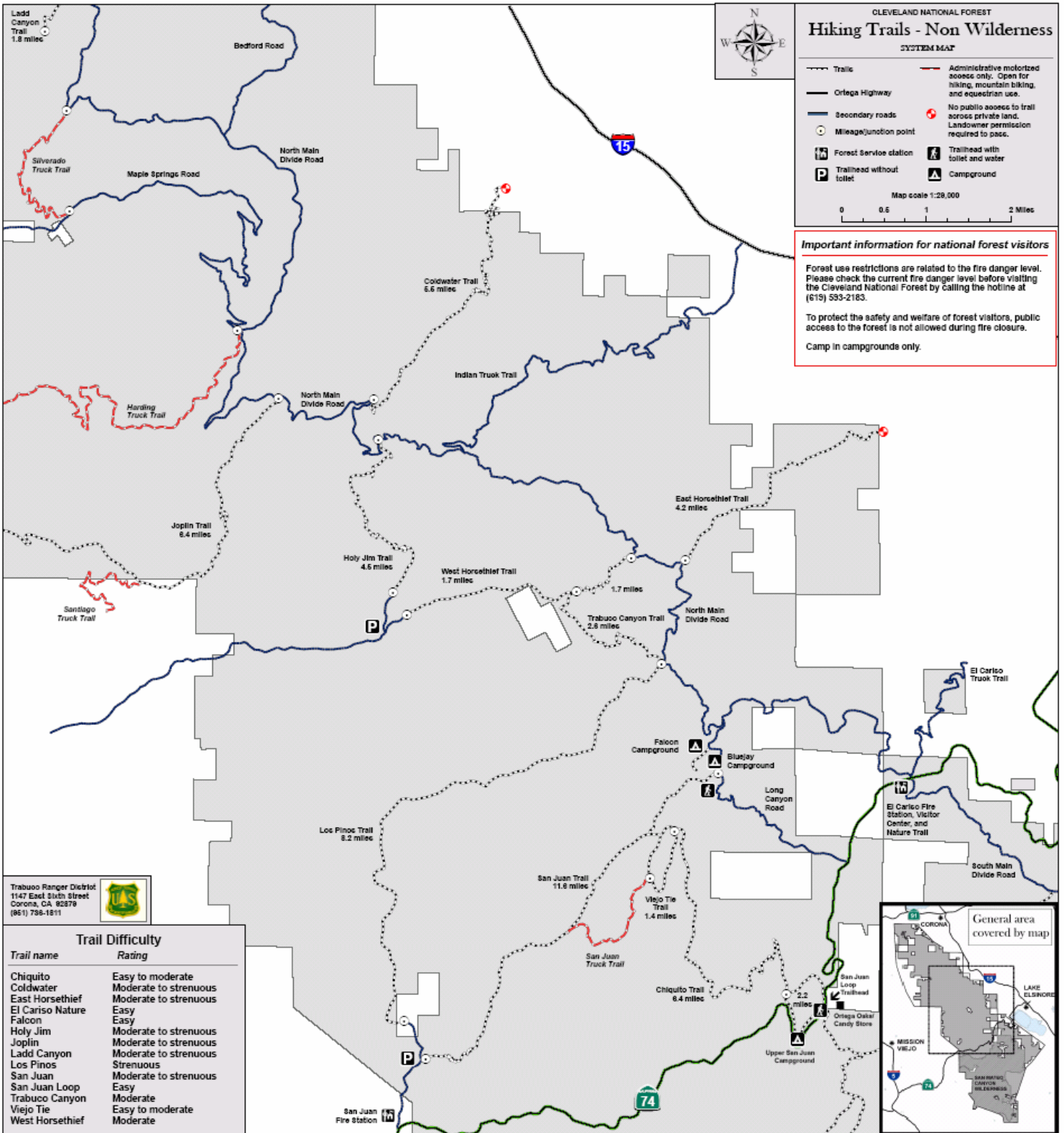
For information, contact the Santa Ana Mountains Natural History Association website at:

www.freewebs.com/santaanamountains

or call the Trabuco District volunteer coordinator.

Volunteer Opportunities!

The Trabuco Ranger District has a wide variety of volunteer opportunities available. They include trail, recreation sites, and sign maintenance; habitat restoration; road and trail patrols; program development; and clerical. Community Service and Eagle Scout projects are also available. Contact the district volunteer coordinator at (951) 736-1811 for more information.



CLEVELAND NATIONAL FOREST
Hiking Trails - Non Wilderness
 SYSTEM MAP

Trails
 Ortega Highway
 Secondary roads
 Mileage/junction point
 Forest Service station
 Trailhead with toilet and water
 Trailhead without toilet
 Campground

Administrative motorized access only. Open for hiking, mountain biking, and equestrian use.
 No public access to trail across private land. Landowner permission required to pass.

Map scale 1:28,000

0 0.5 1 2 Miles

Important information for national forest visitors

Forest use restrictions are related to the fire danger level. Please check the current fire danger level before visiting the Cleveland National Forest by calling the hotline at (619) 533-2163.

To protect the safety and welfare of forest visitors, public access to the forest is not allowed during fire closure.

Camp in campgrounds only.

Trabuco Ranger District
 1147 East 31st Street
 Corona, CA 92678
 (951) 795-1511



Trail Difficulty	
Trail name	Rating
Chiquito	Easy to moderate
Coldwater	Moderate to strenuous
East Horsethief	Moderate to strenuous
El Cariso Nature	Easy
Falcon	Easy
Holy Jim	Moderate to strenuous
Joplin	Moderate to strenuous
Ladd Canyon	Moderate to strenuous
Los Pinos	Strenuous
San Juan	Moderate to strenuous
San Juan Loop	Easy
Trabuco Canyon	Moderate
Viejo Tie	Easy to moderate
West Horsethief	Moderate

