

## Districts and schools

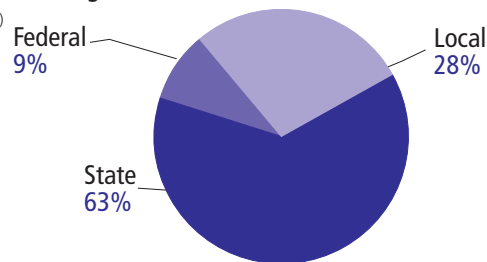
	1993-94	2003-04
Number of districts (CCD)	19	19
<b>Number of public schools (CCD)</b>		
Elementary	86	105
Middle	41	43
High	32	32
Combined	18	19
Other	n/a	1
Total	177	200
<b>Number of charter schools (CCD)</b>		
		13

## Finances

Total current expenditures (CCD, in thousands of dollars, adjusted for inflation to 2002-03)	1993-94	2002-03
Instructional	\$508,593	\$693,970
Noninstructional	34,525	52,592
Support	277,358	381,184
Total	820,476	1,127,746

Per-pupil expenditures (CCD, adjusted for inflation to 2002-03)	1993-94	2002-03
	\$7,774	\$9,693

## Sources of funding (CCD, 2002-03)



Title I allocation 2002-03 (ED; Includes Title I, Part A) \$30,637,587

KEY:	
*	= Less than 0.5 percent
—	= Not applicable
n/a	= Not available
#	= Sample size too small to calculate
FTE	= Full Time Equivalent

## Students

Public school enrollment (CCD)	1993-94	2003-04
Pre-K	565	642
K-8	76,052	82,256
9-12	28,930	34,770
Total (K-12)	104,982	117,026

Race/ethnicity (CCD)	1993-94	2003-04
American Indian/Alaskan Native	*	*
Asian/Pacific Islander	2%	3%
Black, non-Hispanic	28	32
Hispanic	3	8
White, non-Hispanic	66	57

Students with disabilities (OSEP)	1993-94	2003-04
	11%	12%

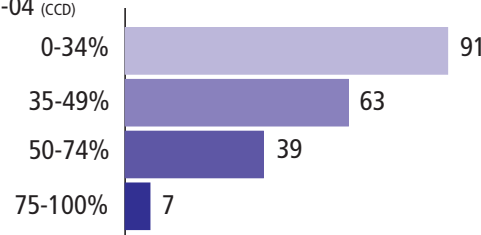
Students with limited English proficiency (NCELA)	1993-94	2003-04
	1%	4%

Migrant students (OME)	1993-94	2003-04
	1%	1%

Eighth-grade students enrolled in Algebra I for high school credit (NAEP)	1996	2003
	39%	21%

Students eligible to participate in the Free or Reduced-Price Lunch Program, 2003-04 (CCD) 39,817

Number of schools, by percent of students eligible to participate in the Free or Reduced-Price Lunch Program, 2003-04 (CCD)



## Staff

Number of FTE teachers (CCD)	1993-94	2003-04
Elementary	2,429	3,269
Middle	1,741	1,752
High	1,838	2,159
Combined	287	362
Other	-	12
Total	6,295	7,554

Number of FTE non-teacher staff (CCD)	1993-94	2003-04
Instructional aides	846	1,361
Instructional coordinators	61	188
Administrators	491	658
Other	3,862	4,631
Total	5,260	6,838

Percentage of teachers with a major in the main subject taught, grades 7-12 (SASS)	1994	2000
English	90%	61%
Mathematics	#	74
Science	82	68
Social studies	77	n/a

Percentage of core courses taught by highly qualified teachers, 2003-04 (As defined and reported by states, collected by ED)



## Outcomes

	1993-94	2000-01
High school dropout rate (NCES)	5%	4%
Avg. freshman graduation rate (NCES)	74	71
College-going rate (IPEDS/NCES)	65	60

NAEP state results (NCES)	1994	2005
Reading, Grade 4		
Proficient level or above	23%	35%
Basic level or above	52	74
Math, Grade 8		
Proficient level or above	19%	30%
Basic level or above	55	73

## Statewide Accountability Information

See Appendix B for Delaware's definitions of proficient for Reading and mathematics for grades 3, 8, and 10.

See [http://www.doe.state.de.us/files/pdf/de\\_edreportcard200304.pdf](http://www.doe.state.de.us/files/pdf/de_edreportcard200304.pdf) for more details on the statewide accountability system.

**State assessment for NCLB accountability:** Delaware Student Testing Program

**State student achievement levels:** Well Below the Standard, Below the Standard, Meets the Standard, Distinguished, Exceeds the Standard

### NCLB Accountability Goals

2001-02 Annual measurable objective starting point			Target (2003-04)
Grade 3	Reading	57%	57%
	Mathematics	33	33
Grade 8	Reading	57	57
	Mathematics	33	33
Grade 10	Reading	57	57
	Mathematics	33	33

### 2003-04 NCLB accountability results, applied to 2004-05 school year

AYP outcomes and consequences	Title I schools	All schools	All districts
Made AYP	81 (82%)	131 (76%)	19 (100%)
Identified for improvement:			
Year 1	6 (6%)	34 (20%)	0
Year 2	4 (4%)	6 (3%)	0
Corrective action	3 (3%)	3 (2%)	0
Restructuring	0	0	0
Exited Improvement status (made AYP twice after being identified for improvement)	0	0	0

### Other indicator, 2003-04

Other indicator, 2003-04	State target	State outcome
Elementary/middle school indicator: Decrease in the number of students performing below the standard	Progress toward 0 students below the standard.	Met
High school indicator: Graduation rate	Progress toward or above 90%	Met

### NCLB choice participation

NCLB choice participation	Number of Title I students	Percent of eligible students
Title I school choice:	195	*
Supplemental educational services:	54	*

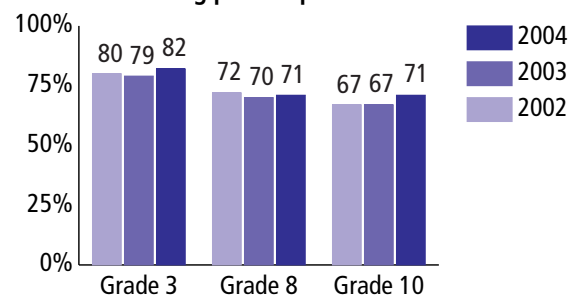
## Student Achievement 2003-04

### Delaware Student Testing Program, used for NCLB accountability

#### Reading

Proficient level or above for:	Grade 3	Grade 8	Grade 10
All students	82%	71%	71%
Economically disadvantaged students	73	55	50
Migrant students	90	75	n/a
Students with disabilities	53	30	16
Students with limited English proficiency	68	19	23
Black, non-Hispanic	70	54	51
Hispanic students	74	56	55
White, non-Hispanic	90	82	80

#### Student achievement trend: Reading percent proficient level or above



#### Mathematics

Proficient level or above for:	Grade 3	Grade 8	Grade 10
All students	78%	50%	53%
Economically disadvantaged students	67	30	31
Migrant students	82	60	n/a
Students with disabilities	47	16	11
Students with limited English proficiency	70	23	30
Black, non-Hispanic	61	28	27
Hispanic students	74	33	34
White, non-Hispanic	87	64	63

#### Student achievement trend: Mathematics percent proficient level or above

