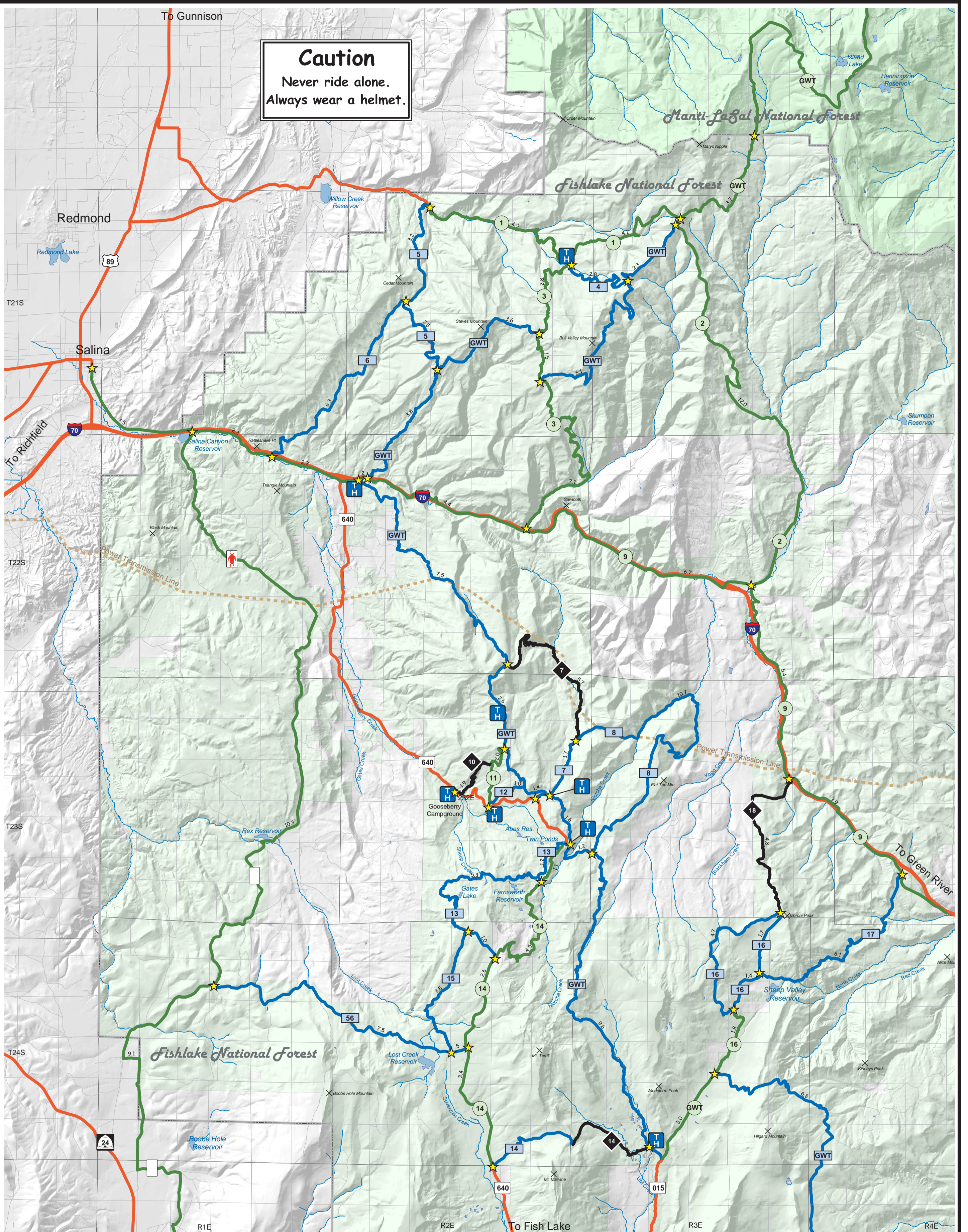


Caution
Never ride alone.
Always wear a helmet.



Legend

★ Intersections

Difficulty

Green line Easiest ①

Blue line More Difficult ②

Black line Most Difficult ③

Orange line Access Routes

Ownership

Green box Forest Service

White box Private or Other

Gooseberry ATV Trails
Fishlake National Forest



GWT:	Great Western Trail	*55.6 Miles	Route 10	Squaw Hollow Trail	1.9 Miles
Route 1	Willow Creek Road	9.2 Miles	Route 11	Oak Ridge Road	2.0 Miles
Route 2	Salina Creek Road	12.0 Miles	Route 12	Gooseberry Mtn. Trail	1.0 Miles
Route 3	Water Hollow Road	9.9 Miles	Route 13	Gates-Farnsworth Trail	8.1 Miles
Route 4	Little Redmond Trail	2.8 Miles	Route 14	UM Pass Trail/Sevenmile Road	17.1 Miles
Route 5	Steves Pass Trail	6.0 Miles	Route 15	Humphrey Springs Trail	3.8 Miles
Route 6	Steves Basin Trail	6.3 Miles	Route 16	Sheep Valley Loop	9.8 Miles
Route 7	Browns Hole Trail	7.5 Miles	Route 17	Tommy Hollow Road	6.1 Miles
Route 8	Flat Top Trail	10.6 Miles	Route 18	Meadow Gulch Trail	4.8 Miles
Route 9	I-70 Frontage Road	25.3 Miles	Route 56	Lost Creek Road	7.9 Miles
			Paiute	Paiute ATV Trail	**30.6 Miles

*Great Western Trail measured from Forest Boundary to south edge of map.

**Paiute ATV Trail measured from Salina to south edge of map.

