

# Recreation Facility Analysis



## 5-year Program of Work and Programmatic Results of Implementation

CORONADO National Forest  
October 26, 2007

[This page is blank.]

Recreation Facility Analysis  
5-year Program of Work

**CORONADO National Forest**

**Reviewed by:** //s Jeanine Derby  
FOREST SUPERVISOR  
CORONADO National Forest

**Date:** 10/30/07

**Reviewed by:** //s *Judith E. Levin*  
REGIONAL RHWR DIRECTOR  
Southwestern Region

**Date:** 11/27/07

**Concurrence:** //s *Abel M. Camarena*  
REGIONAL FORESTER  
Southwestern Region

**Date:** 11/28/07

[This page is blank.]

# Table of Contents

<b>1.</b>	<b>INTRODUCTION .....</b>	<b>1</b>
<b>2.</b>	<b>SUMMARY - Programmatic Effects of Implementation .....</b>	<b>2</b>
	A. BRIEF DESCRIPTION OF PROCESS.....	2
	B. FOREST RECREATION NICHE .....	3
	C. CRITICAL MONETARY FACTORS.....	6
	D. INVENTORY .....	7
	E. RESULTS.....	8
	F. PROPOSED MANAGEMENT ACTION SUMMARY .....	9
<b>3.</b>	<b>RECREATION SITES PRIORITY RANKING REPORT .....</b>	<b>10</b>
<b>4.</b>	<b>TABLE OF TASKS .....</b>	<b>13</b>
	A. SITE-SPECIFIC TASKS .....	13
	B. PROGRAMMATIC ACTIONS.....	16
	C. INVESTMENT PRIORITIES TO REDUCE DEFERRED MAINTENANCE.....	17
	D. SITES WITH NO PROPOSED CHANGES.....	19
	D. DEFERRED MAINTENANCE REDUCTION ANALYSIS .....	22
<b>5.</b>	<b>APPENDIX.....</b>	<b>23</b>
	A. RECREATION SITE DEVELOPMENT SCALE GUIDE .....	23
	B. MANAGEMENT OPTION CODE LIST .....	24

[This page is blank.]

## 1. INTRODUCTION

This document is a living, working road map to guide the Forest in providing a quality, sustainable recreation sites program. It describes the vision for the overall Forest recreation program and outlines proposals specific to individual developed recreation sites.

The proposals and guidance contained in this document were developed through, and are the end result of, the national Recreation Facility Analysis (RFA) process. Existing and projected visitor demands, recreation program niche, resource conditions, links to the community, program costs, and revenue were all considered in developing proposals.

This document will serve as a framework from which the Forest will prioritize investments, and pursue changes in operations or maintenance of recreation sites. Proposals are wholly consistent with the Southwestern Region's "Recreation Strategy" and the Coronado Forest Land and Resource Management Plan.

The Forest recognizes that site-specific analysis and public involvement may be necessary prior to implementing some of the proposals contained in this document. As implementation of site-specific proposals are considered, they will be evaluated to determine if they are subject to the National Environmental Policy Act (NEPA) and all required procedures shall be executed.

The Forest also recognizes that proposals relating to fees will require consistency with criteria outlined in the Recreation Enhancement Act (REA) and coordination with the Arizona-BLM Recreation Resource Advisory Council (RAC).

This analysis was conducted by the Forest from January through September 2005. Benchmark and predicted costs, available allocation projections, and market data used in the analysis are a snapshot from that time period.

## 2. SUMMARY - Programmatic Effects of Implementation

### A. BRIEF DESCRIPTION OF PROCESS

The purpose of the Recreation Facility Analysis process is to display the tasks needed over the next 5 years to bring the Forest's recreation infrastructure into alignment with the resources available to operate and maintain it to standard. Many of our facilities were built 30-50 years ago and have reached the end of their useful life without significant deferred maintenance investment. Other facilities receive no or little use, and no longer serve the demand that existed 30-50 years ago. The fundamental premise of the program of work is to create an inventory which is sufficiently sustainable and flexible to be adapted annually to any changes in available resources. The program of work has been developed to meet the following objectives:

- Operate and maintain sites to standard within available revenue stream.
- Reduce deferred maintenance by 20% over the 5 year life of the program of work.
- Focus available resources on sites which conform most closely to the Forest Recreation Program Niche.
- Maintain and enhance customer satisfaction with available sites.

The RFA process defines the proposed actions for management of forest recreation sites in order to meet the desired future condition that aligns with the Forest Plan. For purposes of the analysis and planning for future proposed actions, four categories (A-D) of proposed management are used. These categories are:

- 1) Category A: sites that are under some type of operational or contractual agreement whose terms are longer than the 5-year period of the RFA.
- 2) Category B: sites that meet the unit niche; are environmentally sustainable within the capability and capacity of the natural resources; are supported by and provide support to local communities; and have a sustainable management cost-benefit ratio.
- 3) Category C: sites that do not meet all of the above criteria, but with a combination of mitigation, additional resources, or other type of action could be made to qualify for Category B status.
- 4) Category D: sites that do not meet all of the (Category B) criteria; or fall sufficiently short in one or more of the criterion so as to render the capability of meeting it unsustainable.

Sites were evaluated and ranked based on conformance to the forest niche and amount of recreation use (35%), financial efficiency (35%), and environmental and community sustainability (30%).

Some sites were identified as non-discretionary based primarily on existing agreements such as concession permits.



B. FOREST RECREATION NICHE

Thursday, April 28, 2005

**Niche Statement** (for coming decade)

**Marketing Phrase: Escape to the Sky Islands**

**Niche Emphasis: The Coronado National Forest is southern Arizona’s Mountain Playground! From warm sprawling deserts and rugged canyons to cool alpine forests, the Coronado displays a richness and depth of landscape found nowhere else in the United States. The forest connects visitors to a past rich with history and fosters respect for a land of niches upon niches; from rare birds to intensely focused recreation.**

**The proximity of the “Sky Islands” to large urban areas and nearby rural communities creates the opportunity for intense and numerous four-season short-duration recreation activities that allow visitors to beat the summer heat, enjoy the mild winter climate, see the fall colors, go play in the snow, and briefly escape the sights and sounds of the city.**

**Settings/Special Places/ Values**

The confluence of the Rockies and the Sierra Madres and the Sonoran and Chihuahuan deserts creates an intricate and complex landscape ranging from desert and grassland to oak woodlands and high elevation pine and fir forest. Situated across 12 distinct mountain ranges, known as “islands”, and surrounded by large tracts of low elevation public and private land, the Coronado National Forest provides refuge for winter visitors and relief from the heat for Southern Arizonans in the summer. The forest is characterized by the magnificent Sonoran desert and its mighty Saguaro cactus, breathtaking vistas and rockscapes, deep canyons, cool mountain forests and incredible night skies. With elevations ranging from 2,400 to 10,720 feet, the Forest ecosystems provide biological diversity as varied as that encountered from Mexico to Canada.

Scenic Corridors – Popular paved driving corridors, many designated as scenic byways, are the conduit for connecting people from low elevation, highly urban settings to high elevation quiet. These corridors provide dramatic geologic and vegetative contrasts from the surrounding lowlands and sweeping views of the surrounding landscape. The scenic corridors connect visitors to a wide range of opportunities to experience and enjoy the Sky Islands.

Backcountry – Ranging from low elevation desert to high elevation conifers, the Coronado backcountry is typified by a rugged and primitive setting, punctuated by the occasional road corridor and providing opportunities to enjoy more rustic and challenging outdoor experiences.

Wilderness – The forest has 8 Wildernesses and one Wilderness Study Area scattered throughout the 12 Sky Islands. The Coronado Wilderness are rugged and dramatic, with varying intensity and quality of trail systems.

**Activities/Opportunities**

Recreation activities that can be enjoyed on the Coronado are as diverse as the people who come to visit. The most popular activities, however, are hiking, viewing wildlife/birding, picnicking, sightseeing, and visiting historic areas. New and leading-edge activities such as geo-caching and telescoping, typify a short-duration recreation Mecca serving a highly diverse population expecting to enjoy a wide variety of day-use activities. Fishing and boating are also available, but limited in this arid land, while opportunities for the fast-growing sport of mountain biking are growing. Winter sports are possible in the higher elevations; Mt. Lemmon Ski Valley is the most southern ski area in the United States.

A number of historic/cultural sites are scattered throughout and provide opportunities to connect visitors with a past rich in history.

Scenic Corridors – Driving, wildlife viewing, hiking, developed camping and picnicking, destination rock climbing, biking, information.

Backcountry – Motorized touring ,hiking, hunting, horseback riding, bird watching, visiting historic sites, primitive camping.

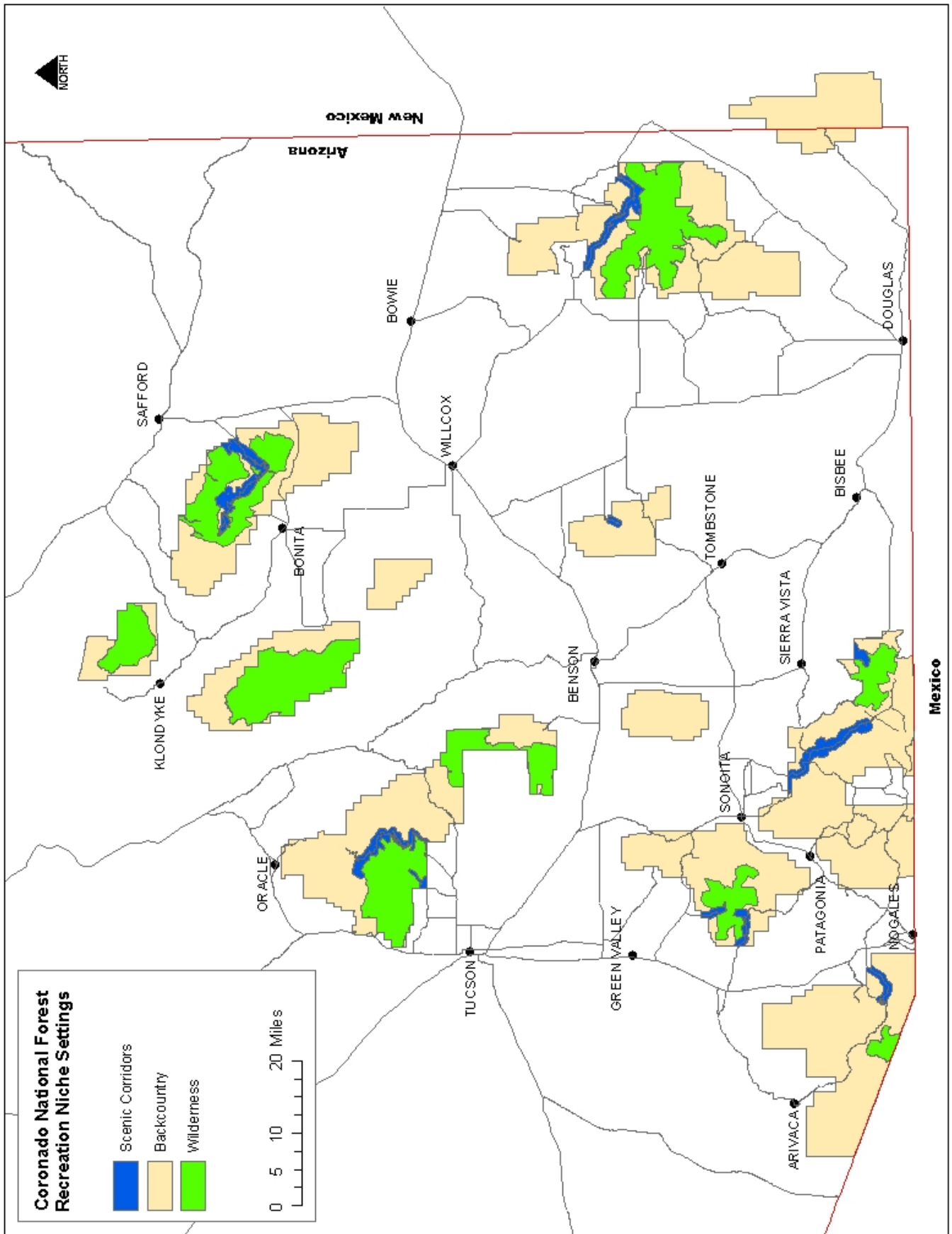
Wilderness– Hiking, back-packing, hunting, and horseback riding.

**Primary Visitors**

Local Urban	Very diverse, frequent day-use visitor in close proximity to the forest.
Urban	Very diverse visitors within a two – four hour drive.
Small communities	Very diverse day-use visitor.
Destination	Coming to the forest for a specific purpose such as birding, rock-climbing, beetles and butterflies.

		<b>DEVELOPED SITES NICHE BRIDGE for the NEXT DECADE</b>					
		<u>Scenic Corridors</u>		<u>Backcountry</u>		<u>Wilderness</u>	
<b>SETTING AREA</b> Key words that describe the setting as it relates to developed sites.		Popular paved driving corridors, many designated as scenic byways. The scenic corridors connect visitors to a wide range of opportunities to experience and enjoy the Sky Islands.		Ranging from low elevation desert to high elevation conifers, the Coronado backcountry is typified by a rugged and primitive setting, punctuated by the occasional road corridor and providing opportunities to enjoy more rustic and challenging outdoor experiences.		The forest has 8 Wildernesses and one Wilderness Study Area scattered throughout the 12 Sky Islands. The Coronado Wilderness is rugged and dramatic, with varying intensity and quality of trail systems.	
<b>SETTING PRIORITY</b> Which setting(s) supports the niche the most for developed sites?		H		M		M	
<b>SITE FUNCTION/THEME</b> How sites are designed/managed to best meet the niche.		Protect the resource and manage intense day use. Scenic corridors include Mt. Lemmon, Sabino Canyon, Madera, Cave Creek, Catalina State Park, and Mt. Graham.		Facilitate dispersal of visitors to maximize backcountry solitude with minimal facilities.		Protect the wilderness resource and accommodate intense use.	
<b>KEY ACTIVITIES</b> in support of the niche for the coming decade		Driving for pleasure, viewing scenery and wildlife, picnicking, camping and biking.		Motorized touring, hiking, hunting, horseback riding, bird watching, visiting historic sites, and primitive camping.		Hiking, back-packing, hunting, and horseback riding.	
<b>I N F R A S T R U C T U R E</b>	<b>PRIMARY SITE TYPE/ DEVELOPMENT SCALE</b>	<b>Site Type</b>	<b>Development Scale**</b>	<b>Site Type</b>	<b>Dev. Scale</b>	<b>Site Type</b>	<b>Dev. Scale</b>
		Scenic OL	3 & 4	Trailheads	3	N/A	
		Picnic Areas	3 & 4	Campgrounds	3		
		Trailheads	2 & 3				
		Campgrounds	3 & 4				
	Info Center	5					
	<b>SITE CAPACITY</b> Low <50, Medium = 50-150 High >150	Medium - High		Medium		Medium	
<b>Programmatic Strategies:</b> Include land ethic messages and historical ties into developed sites whenever possible.							

**\*\* - Development Scale** The classification of the scale of development of recreation sites. Scale ranges from 0, “No Site Modification” to 5, “Extensive Site Modification”. Development scales are defined by levels of site modifications, type of construction materials used, management controls, design style, development density, and services.



C. CRITICAL MONETARY FACTORS

This matrix displays asset and expense information for the Forest Recreation Sites program before and after 5-year Program of Work development.

CORONADO National Forest				
A.	CRITICAL MONETARY FACTOR	BASELINE CONDITION (Benchmark Data)	Program of Work CHANGED CONDITION	Program of Work PERCENT CHANGE
OPERATIONAL ASSETS	APPROPRIATED FUNDS AVAILABLE (Based on 2005 Allocation)	\$ 441,430	\$ 441,430	0%
	FEE RECEIPTS AVAILABLE	\$ 696,135	\$ 777,799	12%
	OTHER FUNDS AVAILABLE	\$ 5,006	\$ 5,000	0%
EXPENSES	OPERATING COSTS	\$ 1,072,014	\$ 857,106	-20%
	ANNUAL MAINTENANCE COSTS	\$ 571,185	\$ 251,018	-56%
	DEFERRED MAINTENANCE COSTS*	\$ 3,202,141	\$ 2,191,337	-32%

\*-Deferred Maintenance included for all sites except CATEGORY D

**Deferred Maintenance.** "Maintenance that was not performed when it should have been or when it was scheduled and which, therefore, was put off or delayed for a future period."

When allowed to accumulate without limits or consideration of useful life, deferred maintenance leads to deterioration of performance, increased costs to repair, and decrease in asset value.

D. INVENTORY

The Inventory Matrix displays the recreation site inventory characteristics before and after 5-year Program of Work development. It displays the number of sites by site type.

CORONADO National Forest					
B.	INVENTORY CHARACTERISTICS	BASELINE CONDITION (Benchmark Data)	PROGRAM OF WORK - CHANGED CONDITION	PROGRAM OF WORK - CHANGED CONDITION	PROGRAM OF WORK - CHANGED CONDITION
			CATEGORY A & B Sites	CATEGORY C Sites	CATEGORY D Sites
			TIER SITE TYPE CATEGORY		
	CAMPGROUND DEV SCALE 2	1	1	0	0
	CAMPGROUND DEV SCALE 3	19	19	0	0
	CAMPGROUND DEV SCALE 4-5	11	11	0	0
	PICNIC SITE DEV SCALE 2-3	12	12	0	0
	PICNIC SITE DEV SCALE 4-5	16	16	0	0
	TRAILHEAD	16	16	0	0
	BOATING/ SWIM SITES/ FISHING SITES	5	5	0	0
	INTERP MAJOR/VC	1	1	0	0
	GROUP CAMPGROUND/ GROUP PICNIC	10	10	0	0
	CABINS/LOOK-OUTS	0	0	0	0
	INTERP MINOR/ OBSERVATION/ INFO SITES	22	22	0	0
	HORSE CAMP	3	3	0	0
	INFO SITE ADMIN	0	0	0	0
	OTHER 1 - ORG SITE FS	1	1	0	0

NOTE: There are no Category C (Close) or Category D (Decommission) sites resulting from this analysis.

E. RESULTS

The Results Matrix describes the significant programmatic results of the ranking process.

CORONADO National Forest				
C1.	PROGRAMMATIC RESULTS	BASELINE CONDITION (Benchmark Data)	PROGRAM OF WORK - CHANGED CONDITION (does not include CATEGORY C and D sites)	Program of Work PERCENT CHANGE (does not include CATEGORY C and D sites)
METRICS	AVERAGE NICHE CONFORMANCE SCORE	14.76	14.76	0%
	AVERAGE DEVELOPMENT SCALE	3.71	3.71	0%
	AVERAGE UNDERSERVED POPULATION SCORE	1.82	1.82	0%
	% OF CAPACITY ACCESSIBLE	1.686%	1.675%	-1%
	% OF CAPACITY W/ ACCESSIBLE FURNISHINGS ONLY	0.048%	0.048%	-1%
	PAOT-DAYS TO REGIONAL REQUIRED STANDARDS	2,234,392	2,908,230	30%
	CAPACITY (PAOT)	10,382	10,447	1%
	CAPACITY (PAOT-DAYS)	3,239,555	2,908,230	-10%
	ANNUAL O&M COST PER PAOT DAY	\$ 0.51	\$ 0.38	-25%
	ANNUAL NET O&M COST PER EST. VISIT	\$ 0.65	\$ 0.23	-65%

C2.	PROGRAMMATIC RESULTS	BASELINE CONDITION (Benchmark Data)	PROGRAM OF WORK - CHANGED CONDITION (does not include CATEGORY D sites)	Program of Work PERCENT CHANGE (does not include CATEGORY D sites)
	TOTAL DEFERRED MAINTENANCE	\$ 3,202,141	\$ 2,191,337	-32%

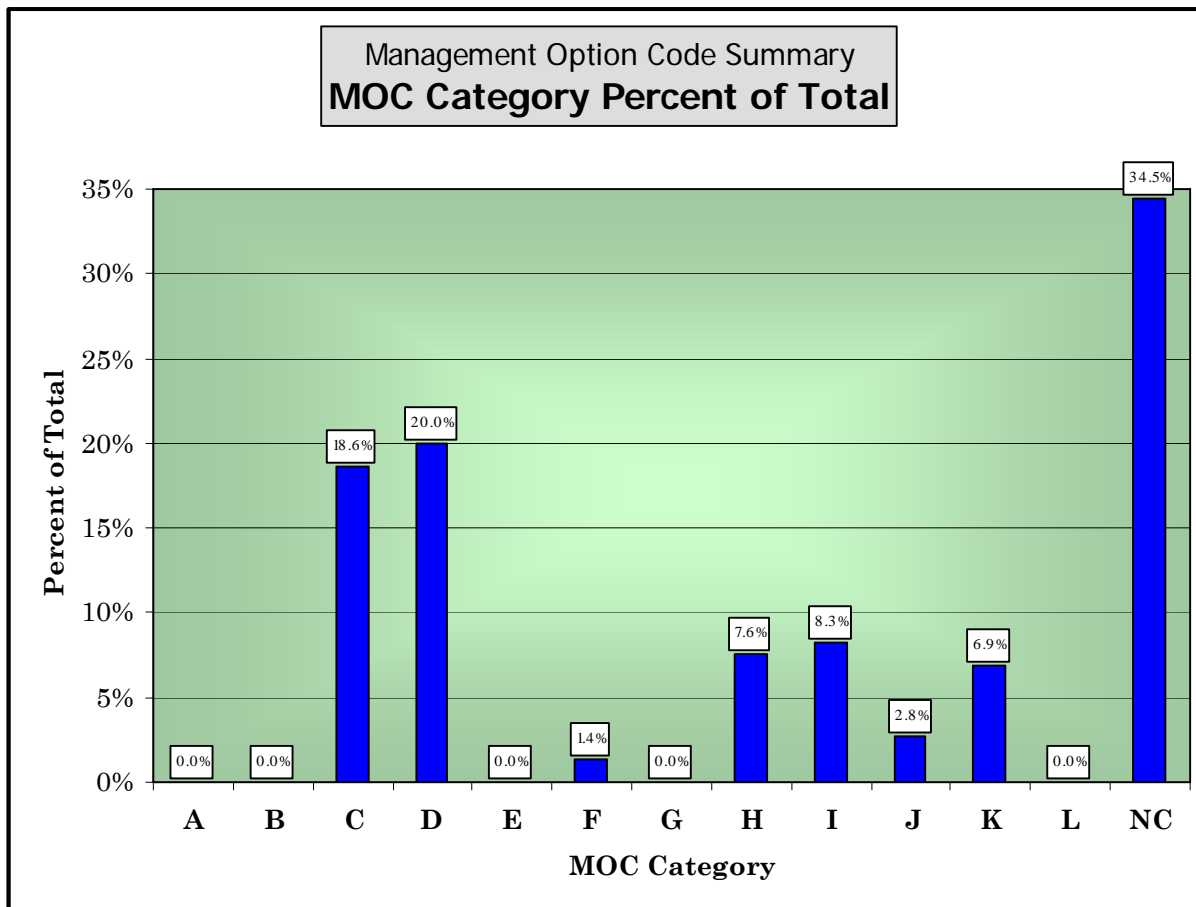
Annual O&M Cost per visit and per PAOT day are averages derived from a summation of ALL the 117 analyzed recreation facilities on the Forest; the cost per visit and per PAOT for each site and site type will vary.

PAOT - An acronym for Persons-At-One-Time; a measure of facility or site designed recreation carrying capacity, particularly for developed sites. National conventions include 5 persons per family picnic/camp unit, 3.5 persons per parking lot stall at a trailhead or visitor center, 1.5 persons per motorcycle parking stall and 40 persons per tour bus parking stall.

O&M - Operations and maintenance; includes the activities and resources required to annually operate and maintain recreation sites at a level of quality which meets their management objectives and customer satisfaction. Costs associated with O&M are generally recurrent, as opposed to capital investment costs that are generally one-time and non-recurrent.

F. PROPOSED MANAGEMENT ACTION SUMMARY

CORONADO National Forest Management Option Code Summary		
MANAGEMENT OPTION CODE CATEGORY	OPTION CODE COUNT	PERCENT OF TOTAL
A-DECOMMISSION	0	0.0%
B-CLOSURE	0	0.0%
C-CHANGE SEASON	27	18.6%
D-REMOVE OR ELIMINATE COST SOURCE OR SERVICE SEASON	29	20.0%
E-REDUCE SERVICE FREQUENCY	0	0.0%
F-INCREASE/IMPROVE SERVICES	2	1.4%
G-CONSTRUCT A NEW AREA	0	0.0%
H-CHANGE OPERATOR	11	7.6%
I-CHANGE FEES	12	8.3%
J-CHANGE CAPACITY	4	2.8%
K-SITE CONVERSION	10	6.9%
L-REPLACEMENT/REPAIR	0	0.0%
NC-NO CHANGE	50	34.5%



### 3. RECREATION SITES PRIORITY RANKING REPORT

The Forest's Recreation Sites Priority Ranking Report lists recreation sites in rank score priority order. The report includes site type, site rank score, site tier category, planned management season, and planned site capacity. Ranking is based on how well a site meets the four objectives of the RFA analysis. (Objectives are listed page 2). Tier Category designations are based on initial ranking and Forest Leadership Team analysis.

#### 8. REPORT: 5-Year Program of Work - Table of Ranked Site Planned Operating Season & Capacity

MNG ORG	SITE NAME	SITE TYPE	TOTAL RANK SCORE	TIER CATEGORY	PLANNED OPENING DATE	PLANNED CLOSING DATE	PLANNED CAPACITY [PAOT]
30501	CAMP RUCKER CG	GROUP CAMPGROUND	101	CATEGORY A	1-Apr	1-Dec	55
30501	COCHISE STRONGHOLD	CAMPGROUND	96	CATEGORY B	1-Sep	1-Jun	183
30505	GORDON HIRABAYASHI CAMPGROUND	CAMPGROUND	95	CATEGORY B	1-Jan	31-Dec	91
30505	LOWER SABINO EAST DAM, SINGLE FAMILY PICNIC	PICNIC SITE	95	CATEGORY B	1-Jan	31-Dec	80
30501	CAVE CREEK VISITOR CENTER	INTERPRETIVE SITE (MINOR)	92	CATEGORY B	1-Jan	19-Feb	91
30502	MADERA CANYON	PICNIC SITE	91	CATEGORY B	1-Jan	31-Dec	65
30505	ROSE CANYON CG	CAMPGROUND	89	CATEGORY B	20-Apr	16-Oct	860
30505	SABINO DAM OVERLOOK	PICNIC SITE	89	CATEGORY B	1-Jan	31-Dec	35
30502	PROCTOR PARKING	INTERPRETIVE SITE (MINOR)	88	CATEGORY B	1-Jan	31-Dec	157
30505	UPPER SABINO CANYON, FAMILY PICNIC	PICNIC SITE	87	CATEGORY B	1-Jan	31-Dec	65
30505	INSPIRATION ROCK	PICNIC SITE	86	CATEGORY B	1-Jan	31-Dec	105
30502	CALABASAS	GROUP CAMPGROUND	85	CATEGORY B	1-Jan	14-Apr	200
30503	LAKEVIEW	CAMPGROUND	85	CATEGORY B	1-Jan	31-Dec	325
30505	SABINO CANYON VIC	INTERPRETIVE SITE (MAJOR)	85	CATEGORY B	1-Jan	31-Dec	1152
30505	WINDY POINT	OBSERVATION SITE	85	CATEGORY B	1-Jan	31-Dec	288
30501	SUNNY FLAT	CAMPGROUND	84	CATEGORY B	1-Jan	31-Dec	119
30502	MADERA TRAILHEAD	PICNIC SITE	83	CATEGORY B	1-Jan	31-Dec	35
30505	SHUTTLE STOP 9	TRAILHEAD	83	CATEGORY B	1-Jan	31-Dec	105
30505	BEAR CANYON TH	TRAILHEAD	81	CATEGORY B	1-Jan	31-Dec	165
30504	UPPER ARCADIA	GROUP CAMPGROUND	80	CATEGORY B	1-Jan	14-Apr	89
30505	CHIHUAHUA PINE	PICNIC SITE	80	CATEGORY B	1-Jan	31-Dec	95
30505	LOMA LINDA	PICNIC SITE	80	CATEGORY B	1-Jan	31-Dec	60
30505	MOLINO BASIN TH	TRAILHEAD	80	CATEGORY B	1-Jan	31-Dec	63
30505	BABAD DO'AG	OBSERVATION SITE	79	CATEGORY B	1-Jan	31-Dec	52
30505	PALISADES VISITOR CENTER	INTERPRETIVE SITE (MINOR)	79	CATEGORY B	15-May	21-Sep	42
30505	ROSE CANYON LAKE (FISHING)	FISHING SITE	79	CATEGORY B	1-Jan	31-Dec	126
30501	STEWART	CAMPGROUND	78	CATEGORY B	4-Apr	30-Sep	30
30502	MT. WRIGHTSON PA	PICNIC SITE	78	CATEGORY B	1-Jan	31-Dec	100
30505	SPENCER CANYON	CAMPGROUND	78	CATEGORY B	15-Apr	15-Oct	230
30502	MADERA AMPHITHEATER	INTERPRETIVE SITE (MINOR)	77	CATEGORY B	1-Jan	31-Dec	75
30502	WHITE HOUSE	PICNIC SITE	77	CATEGORY B	1-Jan	31-Dec	70
30504	STOCKTON PASS	CAMPGROUND	77	CATEGORY B	1-Jan	31-Dec	40
30505	BOX CAMP	TRAILHEAD	77	CATEGORY B	1-Jan	31-Dec	53
30504	TWILIGHT GROUP SITE	GROUP CAMPGROUND	76	CATEGORY B	1-Jan	21-Feb	150
30505	ALDER	PICNIC SITE	76	CATEGORY B	1-Apr	31-Oct	60
30504	SHANNON	CAMPGROUND	75	CATEGORY B	1-May	19-Sep	62
30505	SYKES KNOB	PICNIC SITE	75	CATEGORY B	1-Jan	31-Dec	55
30503	CARR CANYON PICNIC SITE	PICNIC SITE	74	CATEGORY B	1-Jan	31-Dec	55
30504	NOON CREEK	PICNIC SITE	74	CATEGORY B	1-Oct	1-May	75
30505	MIDDLE BEAR CANYON	PICNIC SITE	74	CATEGORY B	1-Jan	31-Dec	55



MNG ORG	SITE NAME	SITE TYPE	TOTAL RANK SCORE	TIER CATEGORY	PLANNED OPENING DATE	PLANNED CLOSING DATE	PLANNED CAPACITY [PAOT]
30505	MT. LEMMON/ASPEN	TRAILHEAD	74	CATEGORY B	1-Apr	27-Oct	70
30502	LOWER THUMB ROCK	PICNIC SITE	73	CATEGORY B	1-Jan	31-Dec	20
30504	RIGGS FLAT-C	CAMPGROUND	73	CATEGORY B	1-May	9-Nov	155
30505	BOX ELDER	PICNIC SITE	73	CATEGORY B	1-Apr	31-Oct	40
30505	BUTTERFLY	TRAILHEAD	73	CATEGORY B	1-Apr	31-Oct	53
30505	LOWER GREEN MOUNTAIN	TRAILHEAD	73	CATEGORY B	1-Jan	31-Dec	25
30505	SAN PEDRO VISTA	OBSERVATION SITE	73	CATEGORY B	1-Jan	31-Dec	35
30505	LOWER SABINO	PICNIC SITE	72	CATEGORY B	1-Jan	31-Dec	40
30505	PEPPERSAUCE	CAMPGROUND	72	CATEGORY B	1-Jan	31-Dec	95
30505	SUNSET	TRAILHEAD	72	CATEGORY B	1-Jan	31-Dec	35
30505	WHITETAILED GROUP	GROUP CAMPGROUND	72	CATEGORY B	15-Apr	15-Oct	300
30505	BEAR CANYON OVERLOOK	PICNIC SITE	71	CATEGORY B	1-Jan	31-Dec	10
30505	GENERAL HITCHCOCK	CAMPGROUND	71	CATEGORY B	1-Jan	31-Dec	55
30501	HERB MARTYR	CAMPGROUND	70	CATEGORY B	1-Jan	31-Dec	25
30502	KENTUCKY CAMP	INTERPRETIVE SITE (MINOR)	70	CATEGORY B	1-Jan	31-Dec	70
30504	HOSPITAL FLAT	CAMPGROUND	70	CATEGORY B	1-May	29-Jun	50
30505	ASPEN VISTA	OBSERVATION SITE	70	CATEGORY B	1-Jan	31-Dec	53
30505	CACTUS ENVIRONMENTAL ED CENTER, GROUP PICNIC	GROUP PICNIC SITE	70	CATEGORY B	1-Jan	31-Dec	65
30505	MARSHALL GULCH	PICNIC SITE	70	CATEGORY B	1-Apr	31-Oct	85
30505	MOLINO BASIN-PS	PICNIC SITE	70	CATEGORY B	1-Jan	31-Dec	20
30501	IDLEWILDE	CAMPGROUND	69	CATEGORY B	4-Apr	30-Sep	50
30502	WHITE ROCK	CAMPGROUND	69	CATEGORY B	1-Jan	31-Dec	25
30504	ARCADIA	CAMPGROUND	69	CATEGORY B	1-Jan	14-Apr	95
30505	SHOWERS POINT	GROUP CAMPGROUND	69	CATEGORY B	15-Apr	15-Oct	75
30501	SOUTH FORK PG	PICNIC SITE	68	CATEGORY B	1-Jan	31-Dec	90
30502	WHIPPLE PICNIC GROUND	PICNIC SITE	68	CATEGORY B	1-Jan	31-Dec	50
30505	GEOLOGY VISTA	OBSERVATION SITE	68	CATEGORY B	1-Jan	31-Dec	28
30505	MOLINO CANYON VISTA	OBSERVATION SITE	68	CATEGORY B	1-Jan	31-Dec	63
30505	SEVEN CATARACTS VISTA	OBSERVATION SITE	68	CATEGORY B	1-Jan	31-Dec	35
30501	JOHN HANDS	CAMPGROUND	67	CATEGORY B	1-Jan	31-Dec	35
30502	MADERA NATURE TRAIL	INTERPRETIVE SITE (MINOR)	67	CATEGORY B	1-Jan	31-Dec	75
30502	UPPER THUMB ROCK	PICNIC SITE	66	CATEGORY B	1-Jan	31-Dec	60
30504	CUNNINGHAM	CAMPGROUND	66	CATEGORY B	1-May	29-Jun	79
30502	MADERA ENTRANCE STATION	INFORMATION SITE	65	CATEGORY B	1-Jan	5-Jun	4
30503	REEF TOWNSITE CAMPGROUND	GROUP CAMPGROUND	65	CATEGORY B	2-Apr	12-Jun	74
30503	ROCK BLUFF	GROUP CAMPGROUND	65	CATEGORY B	1-Jan	13-Feb	55
30504	COLUMBINE CORRALS	HORSE CAMP	64	CATEGORY B	1-May	29-Jun	30
30504	RIGGS FLAT-FS	FISHING SITE	63	CATEGORY B	1-May	9-Nov	105
30504	ROUND THE MOUNTAIN	HORSE CAMP	63	CATEGORY B	1-Sep	2-Jun	33
30504	WET CANYON	PICNIC SITE	63	CATEGORY B	1-Apr	15-Nov	0
30502	ROSEMONT OHV	TRAILHEAD	62	CATEGORY B	1-Jan	31-Dec	50
30502	BOG SPRINGS	CAMPGROUND	61	CATEGORY B	1-Jan	31-Dec	85
30505	BIGELOW TH (PALISADE)	TRAILHEAD	61	CATEGORY B	1-Jan	31-Dec	42
30505	LOWER BUG SPRING	TRAILHEAD	61	CATEGORY B	1-Jan	31-Dec	35
30505	MT. BIGELOW TH	TRAILHEAD	61	CATEGORY B	1-Apr	31-Oct	42
30501	RUSTLER PARK CG	CAMPGROUND	60	CATEGORY B	2-Apr	30-Sep	125
30503	PARKER CANYON LAKE	FISHING SITE	60	CATEGORY B	1-Jan	31-Dec	245
30503	REEF TOWNSITE CG	CAMPGROUND	60	CATEGORY B	2-Apr	30-Sep	85
30504	SOLDIER CREEK	CAMPGROUND	60	CATEGORY B	1-May	9-Nov	67
30505	ALAMBRE OHV STAGING AREA	TRAILHEAD	59	CATEGORY B	1-Jan	31-Dec	105
30505	CACTUS	PICNIC SITE	59	CATEGORY B	1-Jan	31-Dec	15
30505	SABINO FEE STATION	INFORMATION SITE	59	CATEGORY B	1-Jan	31-Dec	4
30502	PENA BLANCA LAKE	FISHING SITE	58	CATEGORY B	1-Jan	31-Dec	88

MNG ORG	SITE NAME	SITE TYPE	TOTAL RANK SCORE	TIER CATEGORY	PLANNED OPENING DATE	PLANNED CLOSING DATE	PLANNED CAPACITY [PAOT]
30502	PENA BLANCA LAKE (BOATING)	BOATING SITE	58	CATEGORY B	1-Jan	31-Dec	53
30503	CARR HOUSE VISITOR INFO STATION	INTERPRETIVE SITE (MINOR)	58	CATEGORY B	1-Jan	31-Dec	88
30505	CYPRESS	PICNIC SITE	58	CATEGORY B	1-Jan	31-Dec	40
30505	MOLINO BASIN-C	CAMPGROUND	58	CATEGORY B	1-Nov	29-Apr	285
30501	BATHTUB	CAMPGROUND	57	CATEGORY B	1-Apr	1-Dec	55
30505	UPPER GREEN MOUNTAIN	TRAILHEAD	57	CATEGORY B	1-Jan	31-Dec	21
30501	CATHEDRAL VISTA POINT	OBSERVATION SITE	56	CATEGORY B	1-Jan	31-Dec	21
30505	SABINO CANYON GROUP	GROUP PICNIC SITE	56	CATEGORY B	1-Jan	31-Dec	85
30502	KENT SPRINGS CENTER	ORGANIZATION SITE FS OWNED	55	CATEGORY B	1-Jan	31-Dec	52
30504	CLARK PEAK CORRALS	HORSE CAMP	55	CATEGORY B	1-May	29-Jun	10
30501	COUNCIL ROCKS INTERPRETIVE TRAIL	INTERPRETIVE SITE (MINOR)	54	CATEGORY B	1-Jan	31-Dec	32
30501	RUSTLER PARK TH	TRAILHEAD	54	CATEGORY B	1-Apr	1-Dec	35
30501	SYCAMORE	CAMPGROUND	54	CATEGORY B	1-Jan	31-Dec	45
30504	COLUMBINE VISITOR CENTER	INTERPRETIVE SITE (MINOR)	54	CATEGORY B	1-May	29-Jun	55
30501	CYPRESS PARK	CAMPGROUND	52	CATEGORY B	1-Apr	1-Dec	58
30501	RUCKER FOREST CAMP	CAMPGROUND	52	CATEGORY B	1-Apr	1-Dec	83
30503	MILLER CANYON PERIMETER	TRAILHEAD	52	CATEGORY B	1-Jan	31-Dec	53
30502	RED ROCK	PICNIC SITE	50	CATEGORY B	31-May	14-Jun	50
30505	MOLINO FEE STATION, FEE STATION, ADMINISTRATIVE	INFORMATION SITE	49	CATEGORY B	1-Jan	31-Dec	4
30501	CAMP RUCKER HISTORIC SITE	INTERPRETIVE SITE (MINOR)	46	CATEGORY B	1-Jan	31-Dec	35
30501	PINERY CANYON	CAMPGROUND	46	CATEGORY B	1-Feb	1-Dec	20
30503	RAMSEY VISTA	CAMPGROUND	43	CATEGORY B	2-Apr	30-Sep	40
30501	WEST TURKEY CREEK CG	CAMPGROUND	42	CATEGORY B	1-Apr	1-Dec	50
30504	PETERS FLAT	INTERPRETIVE SITE (MINOR)	42	CATEGORY B	1-May	9-Nov	15

MNG ORG – Managing Organization Number; first number denotes the Region, the next two numbers the Forest, and the last two numbers the Ranger District.

EX: 3 = Southwestern Region (Region 3)  
05 = Coronado National Forest  
01 = Douglas Ranger District  
02 = Nogales Ranger District  
03 = Sierra Vista Ranger District  
04 = Safford Ranger District  
05 = Santa Catalina Ranger District

#### 4. TABLE OF TASKS

##### A. SITE-SPECIFIC TASKS

The site-specific tasks table lists tasks (Management Option Codes), one-time cost to implement and pertinent documentation for each recreation site. Only sites with proposed management changes are listed.

CORONADO National Forest	\$181,000	TOTAL ONE-TIME COST TO IMPLEMENT TASKS
--------------------------	-----------	--

<b>8a. INFO ENTRY: 5-Year Proposed Program of Work - Table of Tasks</b>							
MNG ORG	SITE NAME	SITE TYPE	TASK (See Appendix B for list of Task Descriptions)	START DATE	FINISH DATE	ONE-TIME COST TO IMPLEMENT ACTION	TASK COMMENTS
30501	BATHTUB	CAMPGROUND	K1,D3	2011	2011	\$5,000	Reduce to Development Scale 1; remove toilet bldg, leave tables until unserviceable. Site is redundant; other similar sites in close proximity.
30501	CAMP RUCKER CG	GROUP CAMPGROUND	C2,D3	2008	2008	\$3,500	Remove 1 toilet bldg. 1 toilet will still be available. Reduce season.
30501	CAMP RUCKER HISTORIC SITE	INTERPRETIVE SITE (MINOR)	C2, H3			\$0	Complete deferred maintenance work with volunteers. Operate site on weekends (Friday thru Sunday) only.
30501	CAVE CREEK VISITOR CENTER	INTERPRETIVE SITE (MINOR)	H2			\$0	Operate with volunteer or other partnership
30501	COCHISE STRONGHOLD	CAMPGROUND	C2,D8	2010	2010	\$1,000	Reduce season. Water system closed in 2005.
30501	CYPRESS PARK	CAMPGROUND	C2			\$0	Reduce season (open April through November).
30501	HERB MARTYR	CAMPGROUND	K1,D3	2009	2009	\$12,500	Remove toilet and leave tables and grills until unserviceable. Eliminate vehicular access due to resource concerns in riparian area (install gate). Site would be available to walk-in use.
30501	IDLEWILDE	CAMPGROUND	D3	2008	2008	\$3,500	Remove 1 toilet bldg. 1 toilet will still be available and identified for future replacement.
30501	JOHN HANDS	CAMPGROUND	K1,D3	2009	2009	\$12,500	Remove toilet and leave tables and grills until unserviceable. Eliminate vehicular access due to resource concerns in riparian area (install gate). Site would be available to walk-in use.
30501	PINERY CANYON	CAMPGROUND	K1			\$0	Remove improvements, tables, and grills as they become unserviceable. Maintain as dispersed camping area.
30501	RUCKER FOREST CAMP	CAMPGROUND	C2			\$0	Reduce season (open April through November).
30501	RUSTLER PARK CG	CAMPGROUND	C2,D3,D8	2008	2008	\$7,000	Remove 1 toilet bldg (likely bldg at top of CG); two would still be available (identified for future replacement). Close water system. Reduce season (open May through September weekends (Friday thru Sunday)).
30501	RUSTLER PARK TH	TRAILHEAD	C2	2010	2010	\$1,500	Move the entrance gate below trailhead. Area would still be available to year-round walk-in use. Trailhead parking would be available May through September.
30501	SYCAMORE	CAMPGROUND	K1,D4	2010	2010	\$10,000	Move servicable tables and grills to West Turkey Creek.
30501	WEST TURKEY CREEK CG	CAMPGROUND	I3,J1	2009	2010	\$3,500	Expand site (using tables and grills removed from Sycamore) as demand warrants. Consider use fee.
30502	CALABASAS	GROUP CAMPGROUND	C2,I4			\$0	Operate site on weekends (Friday thru Sunday) only, increase fee, and add to national campground reservation system.
30502	KENT SPRINGS CENTER	ORGANIZATION SITE FS OWNED	H6			\$0	Propose that permittee maintain and operate water system.
30502	KENTUCKY CAMP	INTERPRETIVE SITE (MINOR)	H3			\$0	Reduce deferred maintenance on bldgs approx 90% using Friends of Kentucky Camp and proceeds from cabin rentals.

30502	LOWER THUMB ROCK	PICNIC SITE	I3	2009	2011	\$1,000	Begin charging day-use fee (after Pena Blanca Lake reclamation)
30502	RED ROCK	PICNIC SITE	C4			\$0	Reduce season (open holiday weekends (Friday thru Sunday) from Memorial Day through Labor Day).
30502	UPPER THUMB ROCK	PICNIC SITE	I3	2009	2011	\$1,000	Begin charging day-use fee (after Pena Blanca Lake reclamation)
30502	WHIPPLE PICNIC GROUND	PICNIC SITE	H2			\$0	Seek partner to operate site (Smithsonian Visitor Center or other).
30502	WHITE ROCK	CAMPGROUND	K1,D3	2009	2009	\$15,000	Reduce to Development Scale 1
30503	CARR CANYON PICNIC SITE	PICNIC SITE	I3	2009	2010	\$1,000	Begin charging a fee (fence road from picnic area to Carr House prior to implementing fee to reduce resource impacts by vehicles)
30503	CARR HOUSE VISITOR INFO STATION	INTERPRETIVE SITE (MINOR)	C3,H3			\$0	Reduce Deferred Maintenance on Carr House approx 90% using Friends of the Huachuca Mtns. Operate site on weekends (Friday thru Sunday) only from May 1 to Sept. 30.
30503	LAKEVIEW	CAMPGROUND	D3,D8	2010	2010	\$2,000	Reduce number of toilets; remove as they become unserviceable. One or more toilets would still be available (identified for future replacement). Some hydrants were removed in 2006.
30503	RAMSEY VISTA	CAMPGROUND	C2			\$0	Operate campground April through November.
30503	REEF TOWNSITE CAMPGROUND	GROUP CAMPGROUND	C2			\$0	Accept reservations for weekends (Friday thru Sunday) only.
30503	REEF TOWNSITE CG	CAMPGROUND	D3			\$0	Remove toilet bldg. 1 toilet bldg would still be available.
30504	ARCADIA	CAMPGROUND	D3			\$0	Remove one toilet bldg. 1 toilet building would still be available.
30504	CLARK PEAK CORRALS	HORSE CAMP	C3			\$0	Operate site on weekends (Friday thru Sunday) only.
30504	COLUMBINE CORRALS	HORSE CAMP	C3			\$0	Operate site on weekends (Friday thru Sunday) only.
30504	COLUMBINE VISITOR CENTER	INTERPRETIVE SITE (MINOR)	H3,C3			\$0	Recruit volunteers to staff. Operate site on weekends (Friday thru Sunday) only.
30504	CUNNINGHAM	CAMPGROUND	C3			\$0	Operate site on weekends (Friday thru Sunday) only.
30504	HOSPITAL FLAT	CAMPGROUND	C3			\$0	Toilet building was replaced in 2006. Operate site on weekends (Friday thru Sunday) only
30504	NOON CREEK	PICNIC SITE	K2,I3,C2	2011	2011	\$15,000	Convert to campground. Operate October through May. Begin charging fee.
30504	ROUND THE MOUNTAIN	HORSE CAMP	C2			\$0	Reduce season. Open Fall through Spring.
30504	SHANNON	CAMPGROUND	C3			\$0	Operate site on weekends (Friday thru Sunday) only.
30504	STOCKTON PASS	CAMPGROUND	K1,D3	2011	2011	\$5,000	Remove facilities.
30504	TWILIGHT GROUP SITE	GROUP CAMPGROUND	C3			\$0	Operate site on weekends (Friday thru Sunday) Spring through Fall.
30504	UPPER ARCADIA	GROUP CAMPGROUND	C3			\$0	Operate site on weekends (Friday thru Sunday) year-round.
30504	WET CANYON	PICNIC SITE	H2			\$0	Seek partner to operate site and reduce Deferred Maintenance (Arizona Department of Transportation or other).
30505	ALAMBRE OHV STAGING AREA	TRAILHEAD	I3	2009	2012	\$1,000	Begin charging day-use fee.
30505	ALDER	PICNIC SITE	C2	2008	2008	\$4,000	Reduce operating season (install entrance gates).
30505	BEAR CANYON OVERLOOK	PICNIC SITE	D4,J2	2012	2012	\$1,000	Remove 4 picnic units.

30505	BOX ELDER	PICNIC SITE	C2			\$0	Reduce operating season.
30505	BUTTERFLY	TRAILHEAD	C2			\$0	Reduce operating season.
30505	CACTUS	PICNIC SITE	J2,F16	2008	2012	\$32,500	Add 3 small ramadas over tables and remove 7 picnic units.
30505	CACTUS ENVIRONMENTAL ED CENTER, GROUP PICNIC	GROUP PICNIC SITE	F1,I4	2008	2012	\$3,500	Add electrical outlets to ramadas and increase reservation fee.
30505	LOMA LINDA	PICNIC SITE	D5			\$0	Remove dumpster (bear-proof trash bins would remain)
30505	LOWER SABINO	PICNIC SITE	D3,D4,D8	2008	2008	\$6,500	Remove 10 picnic units, one toilet bldg, and 2 hydrants. 1 or more toilet would still be available.
30505	LOWER SABINO EAST DAM, SINGLE FAMILY PICNIC	PICNIC SITE	D3	2008	2008	\$3,500	Remove 1 toilet. 1 or more toilet would still be available on west side of creek.
30505	MARSHALL GULCH	PICNIC SITE	D5,C2	2010	2010	\$3,000	Remove trash dumpster (bear-proof trash bins will remain) and reduce operating season.
30505	MOLINO BASIN-C	CAMPGROUND	D8	2012	2012	\$1,000	Site was reconstructed in recent years. Close public water system.
30505	MT. BIGELOW TH	TRAILHEAD	D3	2008	2008	\$3,500	Remove toilet.
30505	MT. LEMMON/ASPEN	TRAILHEAD	C2			\$0	Reduce season.
30505	PALISADES VISITOR CENTER	INTERPRETIVE SITE (MINOR)	H2			\$0	Currently open with volunteer during summer months. Propose to Pima County that they operate Visitor Center and/or consider a volunteer and visitor information at new community center in Summerhaven.
30505	PEPPERSAUCE	CAMPGROUND	H2			\$0	Seek partner to operate site (Oracle State Park or other).
30505	SABINO CANYON GROUP	GROUP PICNIC SITE	K1			\$0	Remove improvements as they become unserviceable
30505	SABINO DAM OVERLOOK	PICNIC SITE	D3,D4,J2	2012	2012	\$3,000	Remove one toilet bldg and 5 picnic units
30505	SYKES KNOB	PICNIC SITE	K1	2008	2008	\$4,000	Remove remaining facilities and rehabilitate site.
30505	UPPER SABINO CANYON, FAMILY PICNIC	PICNIC SITE	D3,D4,D8	2008	2010	\$14,500	Remove 1 toilet, 20 sites, and water system. Other toilets and picnic sites would remain.
30505	WHITETAILED GROUP	GROUP CAMPGROUND	H1			\$0	Site is now operated by concession.

B. PROGRAMMATIC ACTIONS

**CORONADO National Forest**

**8b. INFO ENTRY: 5-Year Proposed Program of Work - Programmatic Actions**

ACTION	LEAD	TIME FRAME
1. Develop criteria for recommending facility replacement (due to age/condition, accessibility, environmental impacts, etc.).	Misty Shafiqullah	March 2008
2. Complete condition surveys for all existing recreation facilities. This includes buildings (such as restrooms), furnishings (such as tables, grills, and food lockers), other major facilities (such as fishing and boating facilities), and associated elements (such as walls, steps, roads, signs, and paths).	Stan Helin	December 2008
3. Current deferred maintenance costs in corporate inventory database [Infra] reflect repair tasks although replacement tasks are often more appropriate (i.e., feature has exceeded service life). This has resulted in a significant undercounting of actual deferred maintenance needs.  Review deferred maintenance costs in Infra for all sites and, using condition survey data (see Programmatic Action #2), update tasks and costs to accurately reflect Forest rec site deferred maintenance needs.	Stan Helin	December 2010
4. Study the feasibility of implementing self-service fee collection on Mt. Lemmon.	Larry Raley	March 2008
5. Re-evaluate recreation sites at Pena Blanca Lake after the dredging is complete.	Stan Helin	October 2008
6. Analyze potential for administrative and recreation cabins and look-out to be included in the Cabin Rental program.	Stan Helin	May 2008
7. Evaluate status of drinking water systems and implement strategies to reduce deferred maintenance costs	Stan Helin Kevin Coyle	May 2009
8. To better meet changing user demands explore opportunities to: -- replace low priority sites with different type rec sites in different locations -- convert low development scale sites (no improvements) to higher development scale sites (toilets and improvements).	Celeste Gordon	October 2008
9. To sustain existing program, evaluate the need for fee increases in Mt Lemmon, Sabino, & Madera Canyon fee areas. Fee changes would be evaluated to address anticipated decreases in recreation site operations and maintenance allocations, increasing costs of operations and maintenance, and growing visitor use.	Stan Helin	Annually

C. INVESTMENT PRIORITIES TO REDUCE DEFERRED MAINTENANCE

The following table lists sites with priority deferred maintenance needs that are currently unfunded. Cost estimates were developed in 2006 as part of the Forest's submittal package for Regional Capital Investment Program (CIP) consideration. Update cost estimates as other funding opportunities are pursued.

**CORONADO National Forest**

<b>8c. INFO ENTRY: 5-Year Proposed Program of Work - Investment Priorities to Reduce DM</b>		
PROJECT NAME	SCOPE OF PROJECT	COST
IDLEWILDE CAMPGROUND	Replace existing toilet building	\$ 75,000
STEWART CAMPGROUND	Replace existing toilet building	\$ 75,000
CAVE CREEK VC	Replace walkway between parking and VC for accessibility	\$ 10,000
WHITEHOUSE PICNIC AREA	Replace deteriorating walks between parking and ramada	\$ 6,500
MADERA AMPHITHEATRE	Reconstruct and surface parking lot	\$ 40,000
MADERA CANYON NATURE TRAIL	Reconstruct and surface nature trail	\$ 130,000
PROCTOR PARKING	Resurface parking lot	\$ 19,500
UPPER THUMB ROCK PICNIC	Reconstruct concrete paths to 2 ramadas	\$ 20,000
REEF TOWNSITE CG	Replace existing 2 toilets bldgs with one new toilet bldg,	\$ 75,000
ROCK BLUFF GROUP CAMPGROUND	Replace toilet bldg and resurface parking lot	\$ 95,000
LAKEVIEW CAMPGROUND	Replace 4 toilet buildings and reconstruct road, including resurfacing, replacing culverts, installing signs, etc.	\$ 420,000
CUNNINGHAM CAMPGROUND	Replace toilet building	\$ 75,000
RIGGS CAMPGROUND	Replace 4 toilet buildings and reconstruct road and parking, including resurfacing, replacing culverts, installing signs, etc.	\$ 540,000
ARCADIA CAMPGROUND	Replace toilet bldg	\$ 75,000
SWIFT TRAIL REC SITES	Replace picnic tables (25 @ \$1000 each) at following sites: Cunningham - 3 Clark Peak - 3 Hospital Flat - 10 Round the Mountain - 3 Riggs - 6	\$ 25,000
SABINO CANYON VC	Surface parking lot	\$ 600,000
SABINO CANYON VC	Revise & replace info panels at pay station	\$ 6,000

PROJECT NAME	SCOPE OF PROJECT	COST
UPPER SABINO PICNIC	Replace 3 existing toilet buildings	\$ 225,000
LOWER SABINO PICNIC	Replace 3 existing toilet buildings	\$ 225,000
GENERAL HITCHCOCK	Improve erosion problem/replace erosion control walls	\$ 30,000
WHITETAIL GROUP	Replace toilet building at site #5 (burned in fire)	\$ 75,000



D. SITES WITH NO PROPOSED CHANGES

<b>Recreation Sites with No Proposed Changes</b>			
MANAGING ORG	SITE NAME	SITE TYPE	TASK COMMENTS
30501	CATHEDRAL VISTA POINT	OBSERVATION SITE	
30501	COUNCIL ROCKS INTERPRETIVE TRAIL	INTERPRETIVE SITE (MINOR)	
30501	SOUTH FORK PG	PICNIC SITE	
30501	STEWART	CAMPGROUND	
30501	SUNNY FLAT	CAMPGROUND	Site reconstructed in 2005. No other changes planned for next 5 years.
30502	BOG SPRINGS	CAMPGROUND	
30502	MADERA AMPHITHEATER	INTERPRETIVE SITE (MINOR)	
30502	MADERA CANYON	PICNIC SITE	
30502	MADERA ENTRANCE STATION	INFORMATION SITE	
30502	MADERA NATURE TRAIL	INTERPRETIVE SITE (MINOR)	
30502	MADERA TRAILHEAD	PICNIC SITE	
30502	MT. WRIGHTSON PA	PICNIC SITE	
30502	PENA BLANCA LAKE	FISHING SITE	
30502	PENA BLANCA LAKE (BOATING)	BOATING SITE	
30502	PROCTOR PARKING	INTERPRETIVE SITE (MINOR)	
30502	ROSEMONT OHV	TRAILHEAD	
30502	WHITE HOUSE	PICNIC SITE	
30503	MILLER CANYON PERIMETER	TRAILHEAD	
30503	PARKER CANYON LAKE	FISHING SITE	
30503	ROCK BLUFF	GROUP CAMPGROUND	
30504	PETERS FLAT	INTERPRETIVE SITE (MINOR)	
30504	RIGGS FLAT-C	CAMPGROUND	
30504	RIGGS FLAT-FS	FISHING SITE	

MANAGING ORG	SITE NAME	SITE TYPE	TASK COMMENTS
30504	SOLDIER CREEK	CAMPGROUND	
30505	ASPEN VISTA	OBSERVATION SITE	
30505	BABAD DO'AG	OBSERVATION SITE	
30505	BEAR CANYON TH	TRAILHEAD	
30505	BIGELOW TH (PALISADE)	TRAILHEAD	
30505	BOX CAMP	TRAILHEAD	
30505	CHIHUAHUA PINE	PICNIC SITE	
30505	CYPRESS	PICNIC SITE	
30505	GENERAL HITCHCOCK	CAMPGROUND	
30505	GEOLOGY VISTA	OBSERVATION SITE	
30505	GORDON HIRABAYASHI CAMPGROUND	CAMPGROUND	
30505	INSPIRATION ROCK	PICNIC SITE	
30505	LOWER BUG SPRING	TRAILHEAD	
30505	LOWER GREEN MOUNTAIN	TRAILHEAD	
30505	MIDDLE BEAR CANYON	PICNIC SITE	
30505	MOLINO BASIN-PS	PICNIC SITE	
30505	MOLINO BASIN TH	TRAILHEAD	Picnic tables have been replaced in recent years.
30505	MOLINO CANYON VISTA	OBSERVATION SITE	
30505	MOLINO FEE STATION, FEE STATION, ADMINISTRATIVE	INFORMATION SITE	
30505	ROSE CANYON CG	CAMPGROUND	Reconstruct 1 group picnic site and construct accessible campsites (Project is on funded Regional capital investment program list for \$800,000 in FY2008)
30505	ROSE CANYON LAKE (FISHING)	FISHING SITE	
30505	SABINO CANYON VIC	INTERPRETIVE SITE (MAJOR)	
30505	SABINO FEE STATION	INFORMATION SITE	
30505	SAN PEDRO VISTA	OBSERVATION SITE	
30505	SEVEN CATARACTS VISTA	OBSERVATION SITE	

MANAGING ORG	SITE NAME	SITE TYPE	TASK COMMENTS
30505	SHOWERS POINT	GROUP CAMPGROUND	
30505	SHUTTLE STOP 9	TRAILHEAD	Site obliterated by debris flow 8/2006. Site replacement under public review/analysis
30505	SPENCER CANYON	CAMPGROUND	Replace tables, fire rings, and grills as funds are available.
30505	SUNSET	TRAILHEAD	
30505	UPPER GREEN MOUNTAIN	TRAILHEAD	
30505	WINDY POINT	OBSERVATION SITE	

D. DEFERRED MAINTENANCE REDUCTION ANALYSIS

Variable DM Reduction Rate					
DM Total	% Reduction	Reduction \$	Annual Expenditure Required for 4 or 5 Years to Meet Target	Target DM \$ by Target Date	Target Date
\$3,202,141	20%	\$640,428	\$128,100	\$2,561,713	2010
\$2,561,713	50%	\$1,601,071	\$320,200	\$960,642	2015
\$320,214	20%	\$640,428	\$128,100	\$320,214	2020

Straight Line DM 14 Year Reduction Rate					
DM Total	% Reduction	Reduction \$	Annual Expenditure Required to Meet 2020 Target	Target DM \$ by 2020	Target Date
\$3,202,141	90%	\$2,881,927	\$205,900	\$320,214	2020
DM Total After MOC Staff Work	Target DM \$ by 2020	Reduction \$ After MOC Staff Work	Annual Expenditure Required to Meet 2020 Target after MOC Staff Work		
\$2,191,337	\$320,214	\$1,871,123	\$133,700		
<b>* Reduction from MOC staff work</b>			<b>\$1,010,804</b>		
<b>Yrs. Resulting from staff work</b>			<b>5</b>		

Annual Funds Available for DM			
Annual Expenditure Required to Meet 2020 Target after MOC Staff Work	Annual Granger-Thye Fee Off-set	Annual Revenues Available for DM	Remaining Annual DM Reduction Shortfall
\$133,700	\$ 5,525	\$0	\$128,175

## 5. APPENDIX

### A. RECREATION SITE DEVELOPMENT SCALE GUIDE

Scale #	Definition
0	<p><b>No site modification</b></p> <ul style="list-style-type: none"> <li>○ No constructed improvements evident at the site</li> <li>○ Little to no controls or regimentation</li> <li>○ Primary access usually over primitive roads</li> <li>○ Spacing informal and often established by user</li> </ul>
1	<p><b>Almost no site modification.</b></p> <ul style="list-style-type: none"> <li>○ Rustic or rudimentary improvements designed for protection of the site rather than comfort of the users.</li> <li>○ Use of synthetic materials excluded.</li> <li>○ Minimum controls are subtle.</li> <li>○ No obvious regimentation.</li> <li>○ Primary access usually over primitive roads</li> <li>○ Spacing informal and extended to minimize contacts between users.</li> </ul>
2	<p><b>Minimal site modification.</b></p> <ul style="list-style-type: none"> <li>○ Rustic or rudimentary improvements designed primarily for protection of the site rather than the comfort of the users.</li> <li>○ Use of synthetic materials avoided.</li> <li>○ Minimum controls are subtle.</li> <li>○ Little obvious regimentation.</li> <li>○ Spacing informal and extended to minimize contacts between users.</li> <li>○ Primary access usually over primitive roads.</li> <li>○ Interpretive services informal, almost subliminal.</li> </ul>
3	<p><b>Moderate site modification.</b></p> <ul style="list-style-type: none"> <li>○ Facilities about equal for protection of natural site and comfort of users.</li> <li>○ Contemporary/rustic design of improvements is usually based on use of native materials. Inconspicuous vehicular traffic controls usually provided.</li> <li>○ Roads may be hard surfaced and trails formalized.</li> <li>○ Development density about 3 family units per acre.</li> <li>○ Primary access may be over high standard roads.</li> <li>○ Interpretive services informal if offered, but generally direct.</li> </ul>
4	<p><b>Heavy site modification.</b></p> <ul style="list-style-type: none"> <li>○ Some facilities designed strictly for comfort and convenience of users.</li> <li>○ Luxury facilities not provided.</li> <li>○ Facility design may incorporate synthetic materials.</li> <li>○ Extensive use of artificial surfacing of roads and trails.</li> <li>○ Vehicular traffic control usually obvious.</li> <li>○ Primary access usually over paved roads.</li> <li>○ Development density 3-5 family units per acre.</li> <li>○ Plant materials usually native.</li> <li>○ Interpretive services, if offered, often formal or structured.</li> </ul>
5	<p><b>Extensive site modification.</b></p> <ul style="list-style-type: none"> <li>○ Facilities mostly designed for comfort and convenience of users and usually include flush toilets; may include showers, bathhouses, laundry facilities, and electrical hookups.</li> <li>○ Synthetic materials commonly used.</li> <li>○ Formal walks or surfaced trails.</li> <li>○ Regimentation of users is obvious.</li> <li>○ Access usually by high-speed highways.</li> <li>○ Development density 5 or more family units per acre.</li> <li>○ Plant materials may be non-native.</li> <li>○ Formal interpretive services usually available. Designs formalized and architecture may be contemporary.</li> <li>○ Mowed lawns and clipped shrubs not unusual.</li> </ul>

## B. MANAGEMENT OPTION CODE LIST

### A – DECOMMISSION [Capture decommissioning costs in 5-year Program of Work]

1. Decommission
  - a. As soon as practical
  - b. Begin glide path
2. Partial Decommission (e.g., remove campsites next to boat ramp)

### B - CLOSURE

1. Close – defer decommissioning
2. Partial Closure – defer decommissioning (e.g., close campsites next to boat ramp but don't remove yet)
3. Closure pending completion of site improvements

### C - CHANGE SEASON [If a change, reflect in columns J or K, in worksheet 3, the change in operating days]

1. Increase season
2. Reduce season
3. Intermittent closure during season
4. Open weekends/holidays only
5. Open for hunting season only

### D – REMOVE OR ELIMINATE A COST SOURCE or SERVICE SEASON [use Site task cost detail in Worksheet 2b of the Ranking Template]

1. Reduce mowed area
2. Remove trashcans
3. Remove restroom facilities
4. Remove tables and/or grills
5. Other changes to site design or features to reduce costs
- 6.
7. Other changes to eliminate on-site services
8. Close or remove water system
9. Close or remove waste water system

### E - REDUCE SERVICE FREQUENCY SEASON [use Site task cost detail in Worksheet 2b of the Ranking Template] THESE CODES ARE RARELY USED AND REQUIRE SIGNIFICANT DOCUMENTATION

1. Reduce service – mow less frequent
2. Reduce service – trash and clean-up less frequent
3. Reduce service – restroom cleaning less frequent
4. Reduce service – staff presence reduced on site
5. Reduce service – less frequent bulletin board posting
- 6.
7. Reduce service – other

### F – INCREASE/IMPROVE SERVICES [use applicable rates in Features section of Recreation Sites module in Infra]

1. Add electrical hook-ups
2. Increase amps of existing electrical hook-ups
3. Add water hook-ups
4. Add sewer hook-ups
5. Add hot showers
6. Upgrade existing feature (e.g., replace SST with flush toilets)
7. Add amenities (playground, swim area, etc)
8. Add a Host site(s)

9. Major reconstruction/upgrade of the recreation area
10. Increase staff presence (including law enforcement)
- 11.
12. Improve visitor information and bulletin boards
13. Improve signing
14. Add water delivery service to individual users
15. Add greywater/blackwater pumping service to individual users
16. Other
17. Add a toilet building(s)

#### G – CONSTRUCT A NEW AREA

1. Construct a new site

#### H – CHANGE OPERATOR or WORKFORCE

1. Change to a concession operation [**apply a 60% savings to O&M cost per operating day**]
2. Operate through a partner agreement (e.g., local community, State agency, etc)
3. Volunteer (increase use of volunteers at the site)
4. Contractor (begin or expand use of contracting)
5. Prison labor (begin or expand use of prison labor)
6. Other

#### I – CHANGE FEES

1. Eliminate fee
2. Reduce fee
3. Begin charging a fee
4. Increase current fee
5. Increase fee compliance efforts

#### J – CHANGE CAPACITY (PAOT) [If a change, reflect in columns S or T, in worksheet 3, the change in capacity]

1. Increase Capacity (Add a loop, build additional sites, add parking, etc)
2. Reduce Capacity (i.e., close a loop, remove camp units, eliminate a parking area, etc.)

#### K -- SITE CONVERSION

1. Change in Development Scale
2. Change in Site Type
3. Study feasibility of converting site from FA&O facility to recreation site

#### L – REPLACEMENT/REPAIR

1. Replacement of an existing constructed feature that results in the reduction of Deferred Maintenance
2. Repair of an existing constructed feature that results in the reduction of Deferred Maintenance.
3. Conversion of constructed features to meet accessibility standards.

#### NC – NO CHANGE (i.e., none of the above site specific changes apply)

1. No change – currently USFS operated
2. No change – currently concession operation
3. No change – currently operated by a partner under some other type of formal agreement

Note – A site can have more than one code