

L3-84-SP - D26-1

D26-1

9-20-JH

L3-84-SP; D26-1 - Fragment w/ complete Crust + Substrate:

Traverse Substrate to top of Crust.

substrate subhedral + anhedral granules w/ much porosity
+ no fossils + Chem = Si much > than all, trace Al,
K, Fe, Ca, Ti, Na,

Crust ~~is~~ Si, Al, K, white, phyllosite -

Cement = same w/ Fe -

Contact: in Crust dark = Fe > Mn that's all

Lite Substrate stuff -

Photo 1; general of Contact -

~~The~~ Crust has flaky parts near contact -

v. massive is very Fe-rich -

not so rare -

rare minerals in Crust? -

Crust is massive to granular -

frag. of rod. ? + bladed spherul - mostly flaky texture -

laminated -

Amorphous dark laminae = Mn = Fe - more NaCl - ^{philly salt}

Surrounding matrix Mn = Fe, w/ more Ca

outer surface is boulders w/ Caotic laminae -

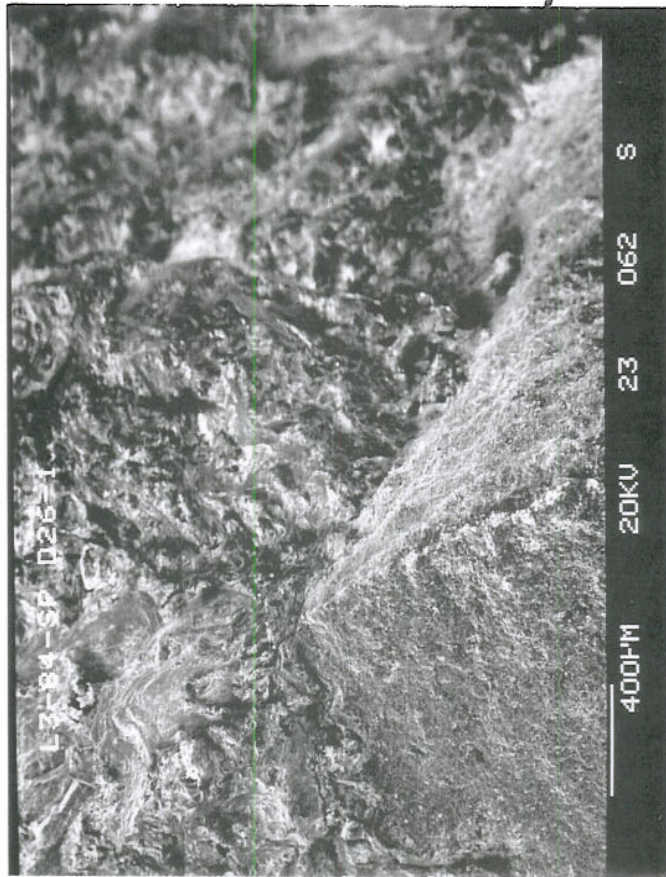


Photo 1

Center