

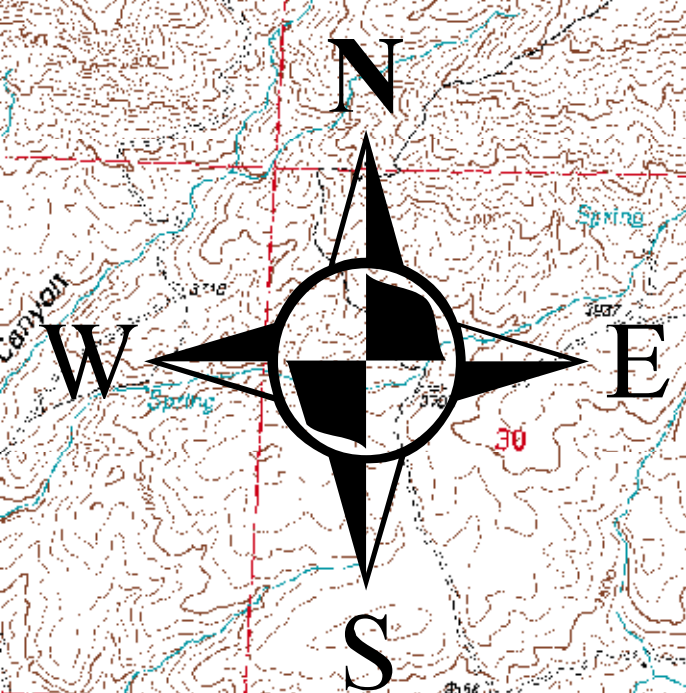
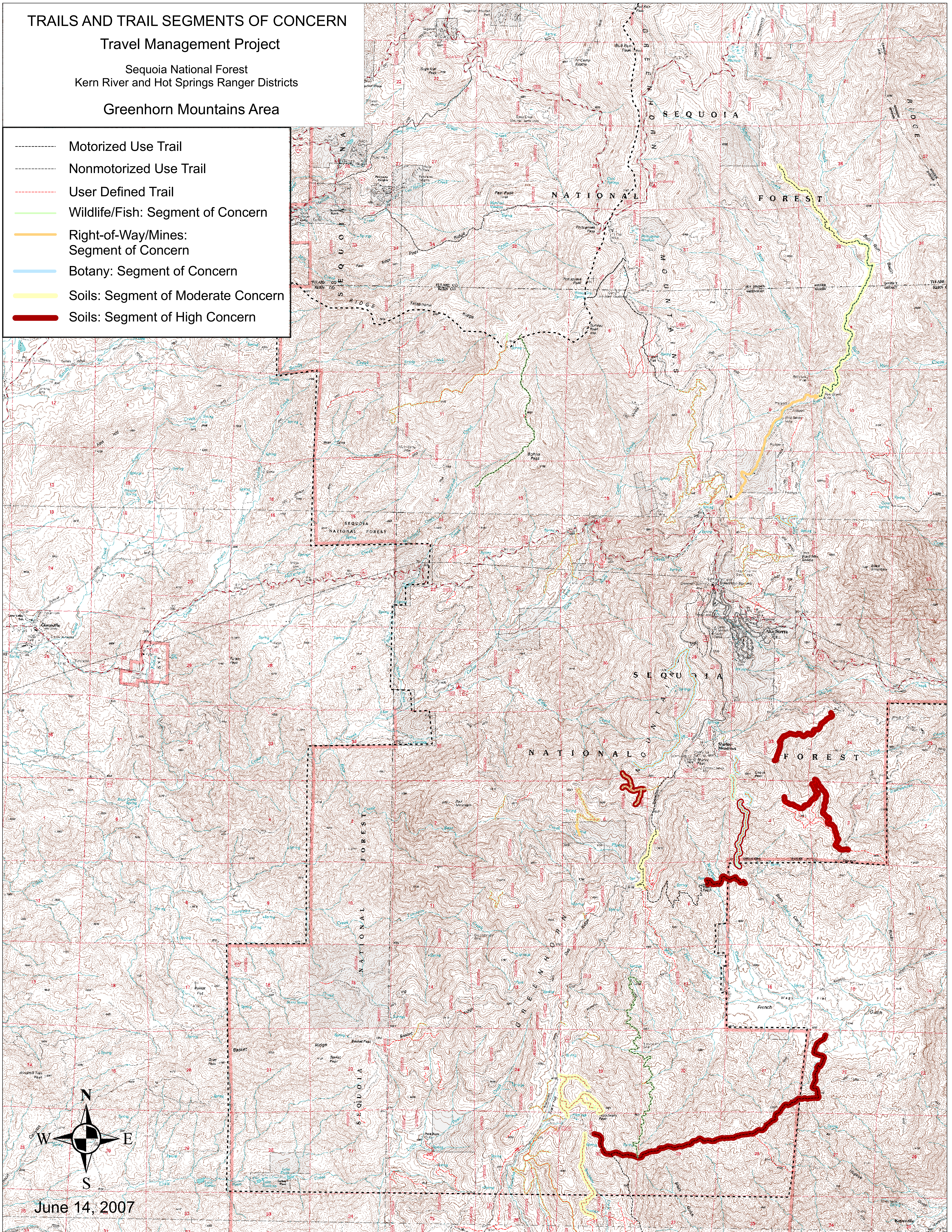
TRAILS AND TRAIL SEGMENTS OF CONCERN

Travel Management Project

Sequoia National Forest
Kern River and Hot Springs Ranger Districts

Greenhorn Mountains Area

- Motorized Use Trail
- Nonmotorized Use Trail
- User Defined Trail
- Wildlife/Fish: Segment of Concern
- Right-of-Way/Mines: Segment of Concern
- Botany: Segment of Concern
- Soils: Segment of Moderate Concern
- Soils: Segment of High Concern



June 14, 2007