

# Sector Allocations in the Northeast

Drew Kitts

Economist

Social Sciences Branch

NEFSC, Woods Hole, MA

## **“Sector” Definition – as currently envisioned in the Northeast**

- Limited access
- Hard TAC
- Allocation of TAC to group of self-selecting vessel owners
- Allocations based on fishing history
- Vessel carries history in/out of sectors
- Operations plan

# Examples

(green = currently exist,  
others in various stages of development)

- Multispecies
  - **Georges Bank Cod Hook Sector**
  - Georges Bank Fixed Gear Sector
  - Downeast Groundfish Initiative
- **Montauk Tilefish Association (de facto)**
- Various herring fishery groups
- New England Red Crab Harvesters Association
- East Coast Scallop Harvesters Association
- RI fluke fishermen (state)

# Herring (so close...)

- Attempted to establish a *process* for sector self selection
  - Sectors could form at any time
- Last minute PDT/SSB/Regional Office debate even though basic outline was in A#1 documents for years
- Very little regional policy guidance (only had groundfish sector experience)

# Overview of Herring Example

- Sectors form around four area based TACs
- Common pool for non-sector vessels
- Vessels may have sector membership in multiple areas but only in one sector per area
- Allocation based on recent history
  - Considerable debate about using older landings data to create limited access
- Fishing history while in a sector doesn't count in subsequent movement

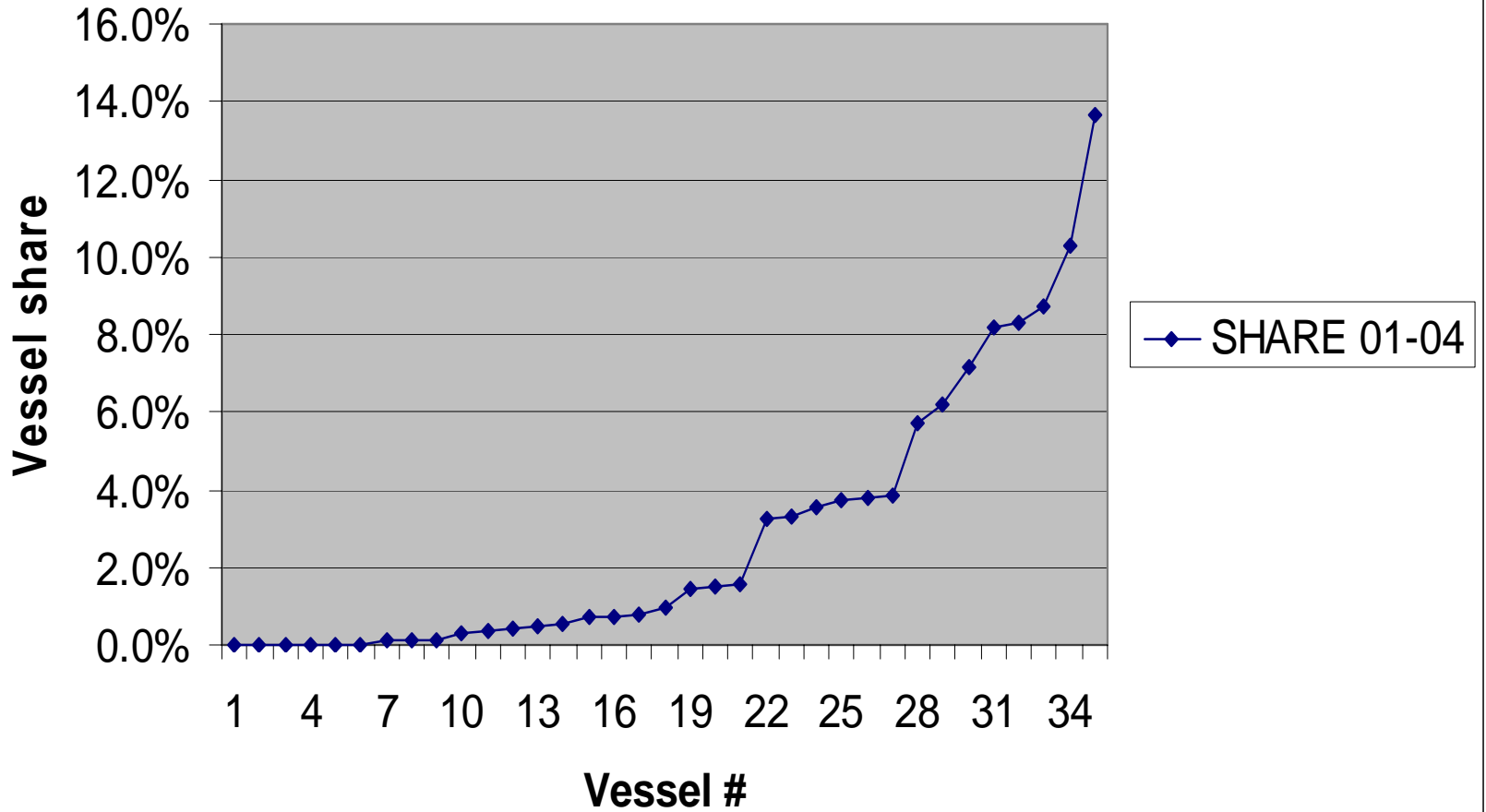
# Allocation (it always comes down to this...)

- Vessel carries percentage share to/from sector
  - Calculate high-three average (H3) for all vessels from 2001 forward (ongoing until vessel enters sector)
  - Vessel share =  $\text{Vessel H3} / \text{all vessel pre-sector H3}$
- H3 will never decrease but share may increase or decrease depending on activity of other vessels
- May have created a race but needed to treat utilized and under-utilized area TACs differently

# So, What Happened?

- Occurred simultaneously with limited access
- Questionable pre-FMP area based landings history
- Lack of overall policy guidance (sectors and decentralized management in general)
- Allocation battles
- Amendment 1 qualified too many vessels with little or no history into the primary fishing area

# Proposed Action - Area 1A (Vessel Level Shares)





# Social Scientists as Facilitators

- Sectors in the Northeast are just beginning
  - Typical modeling studies are lower priority
- Really need:
  - Institutional design/policy formation guidance
  - Outreach/education – industry, Councils, RO
  - Financial feasibility studies
- Other
  - Link to capacity initiatives
  - Relate to ecosystem based management
  - Document sector experiences