

Figure 89. FAA L-880 Style A (Constant Voltage) System Wiring Diagram.

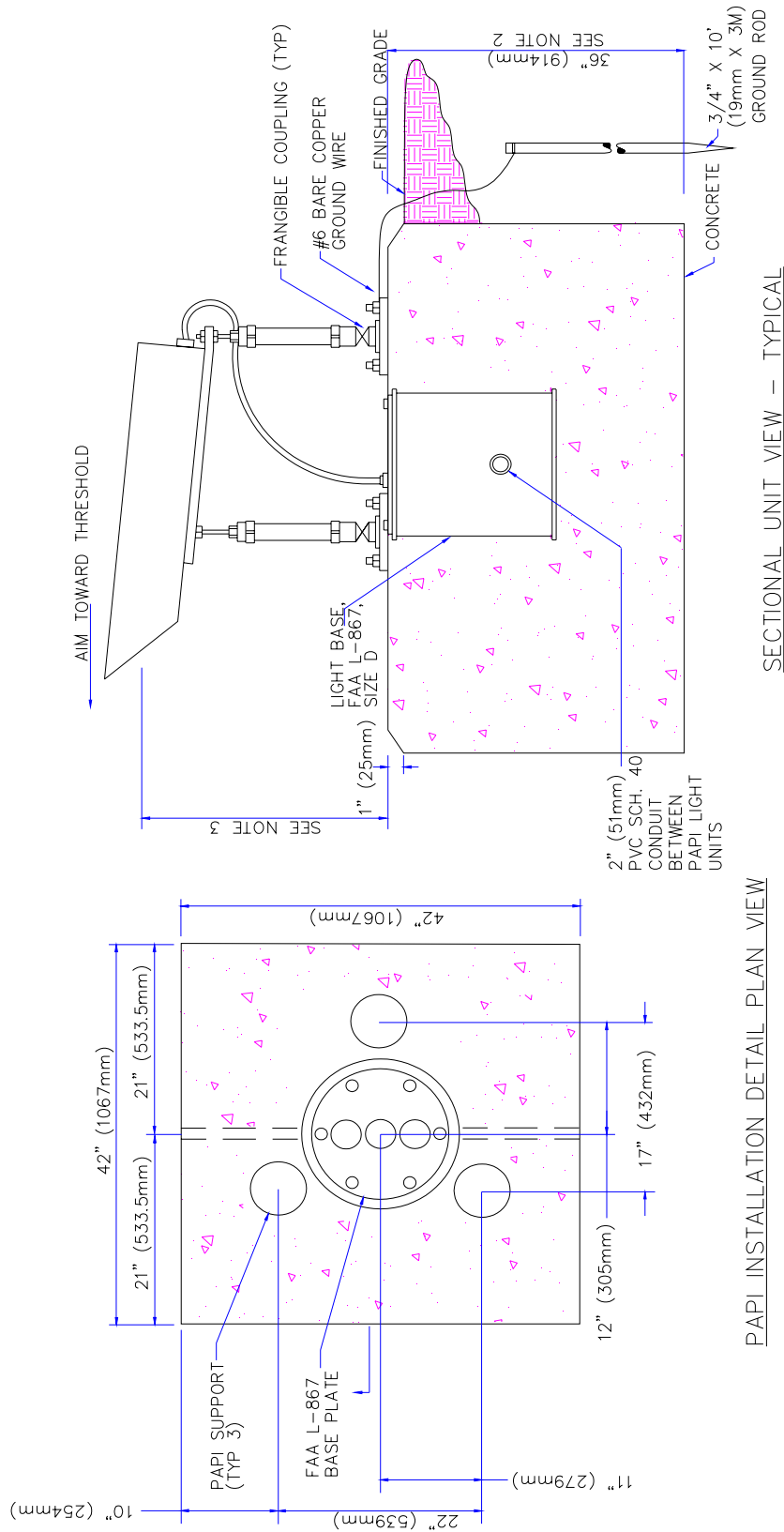


Figure 90. PAPI Light Housing Unit (LHU) Installation Detail.

PAPI LIGHT HOUSING UNIT (LHU) INSTALLATION DETAIL

NOT TO SCALE

NOTES:

1. DIMENSIONS SHOWN ARE TYPICAL AND MAY NOT APPLY TO ALL PAPI MANUFACTURERS. OBTAIN AND CONFIRM DIMENSIONS FROM MANUFACTURER PRIOR TO INSTALLATION.
2. DEPTH OF FOUNDATION SHALL BE MIN. 36" (914mm) OR 12" (305mm) BELOW FROST LINE WHICHEVER IS GREATER.
3. AIMING ANGLE AND LOCATION OR UNITS SHALL BE AS INDICATED ON CONTRACT DOCUMENTS.
4. LOCATION OF L-867 LIGHT BASE MAY BE BEHIND UNIT AS AN ALTERNATE LOCATION TO ALLOW EASIER ACCESS TO TRANSFORMERS OR WIRE SPLICES.

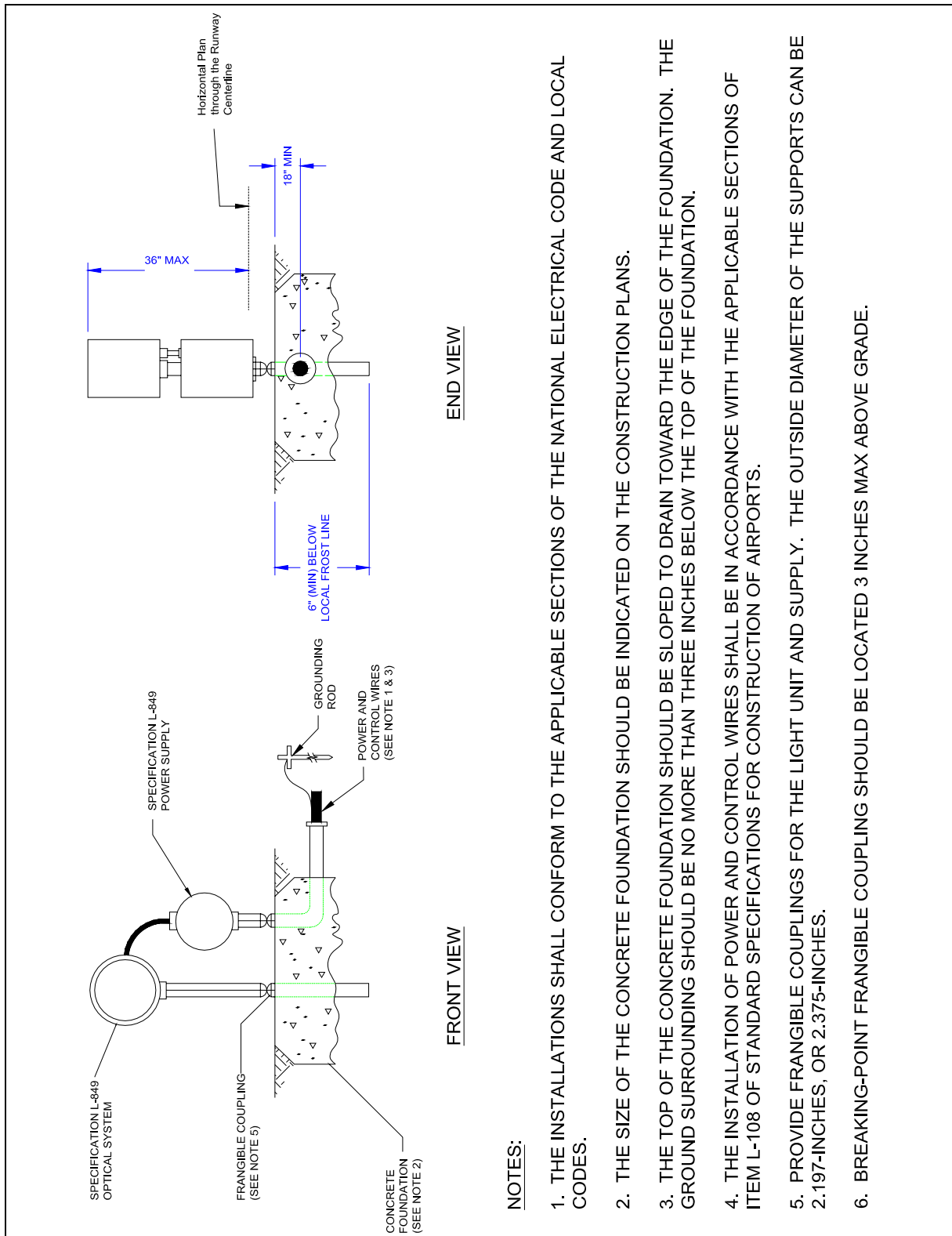


Figure 91. Typical Installation Details for Runway End Identifier Lights (REILs).

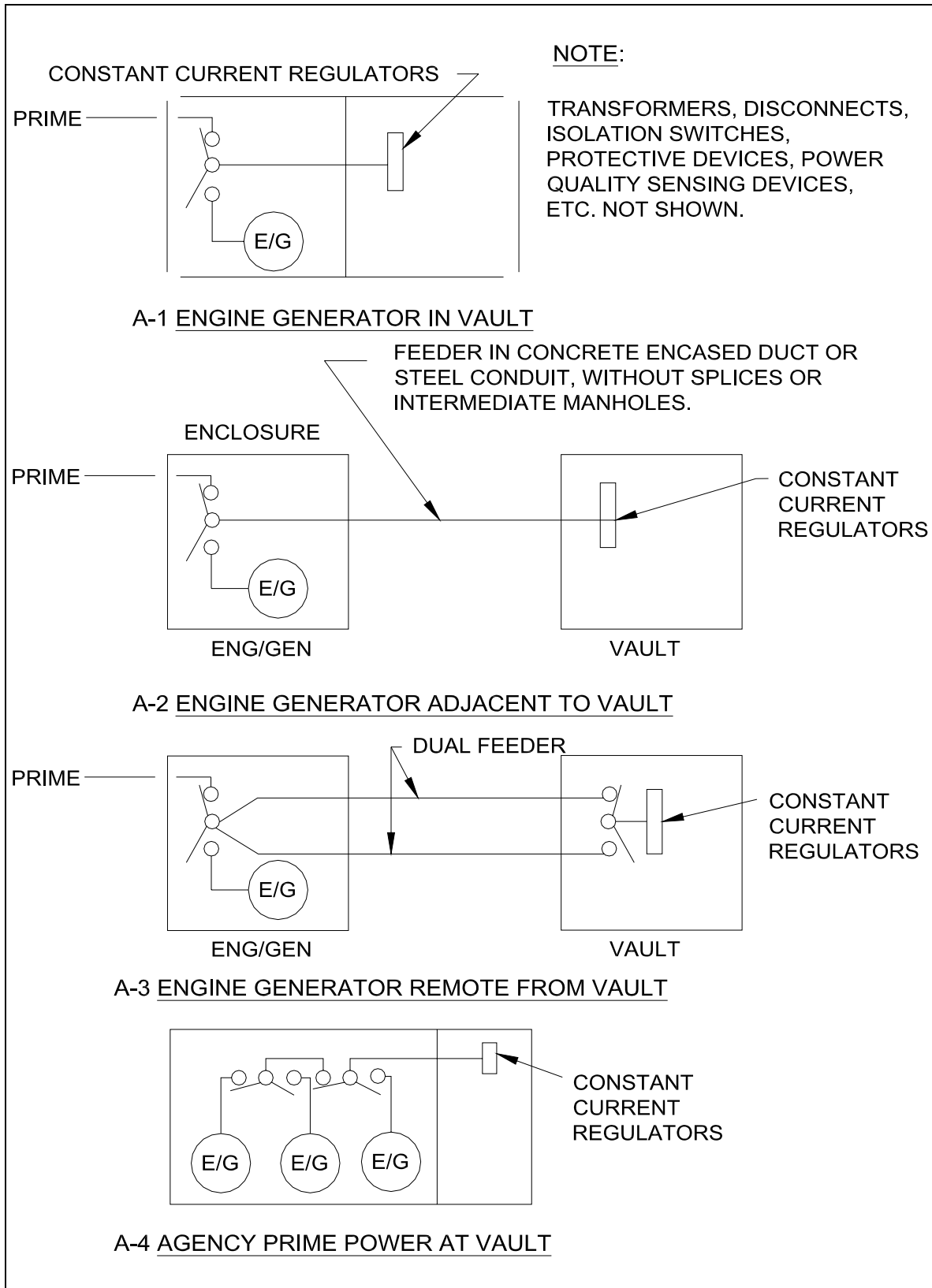


Figure 92. Configuration “A” Electrical Power.

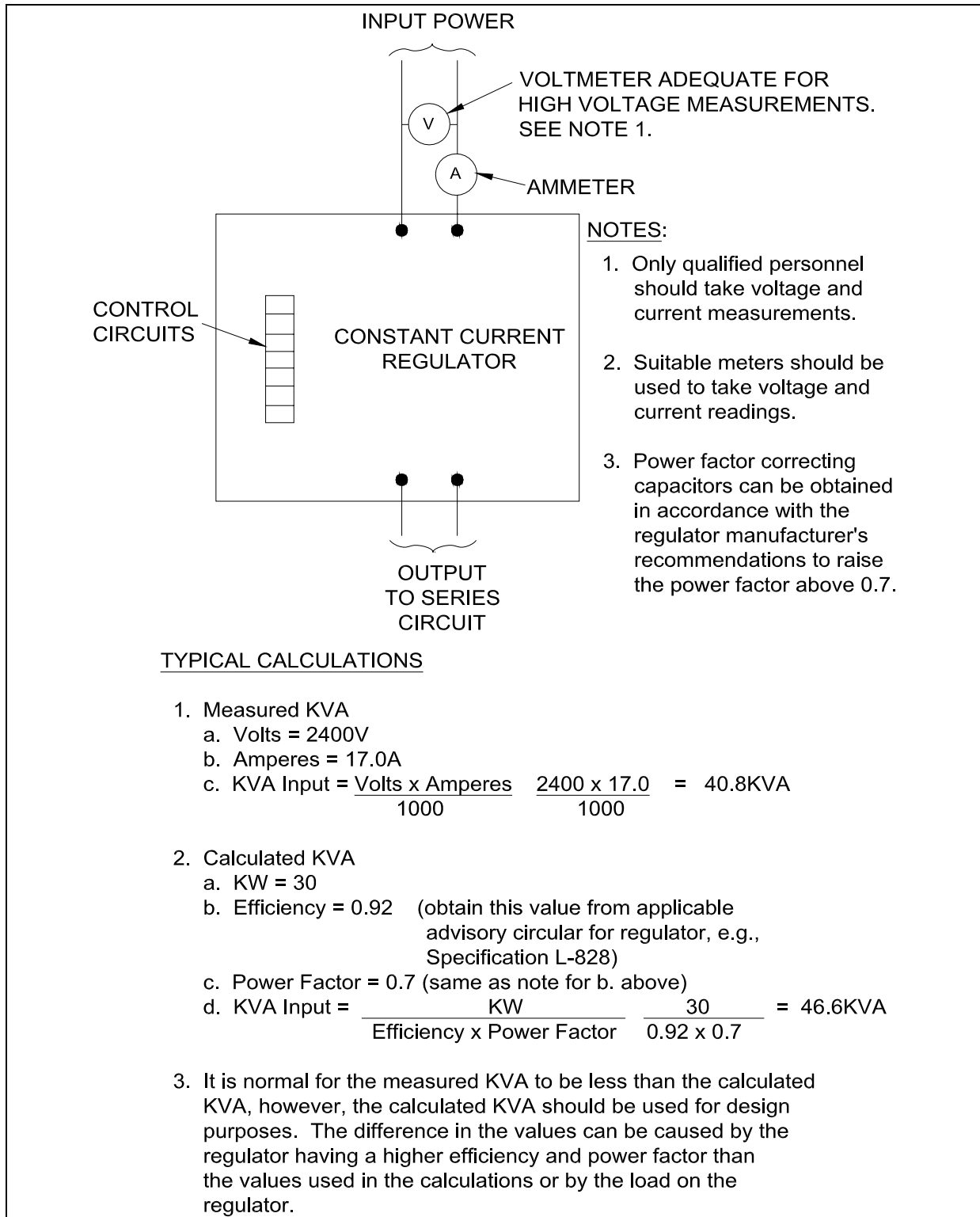


Figure 93. Typical KVA Input Requirements.

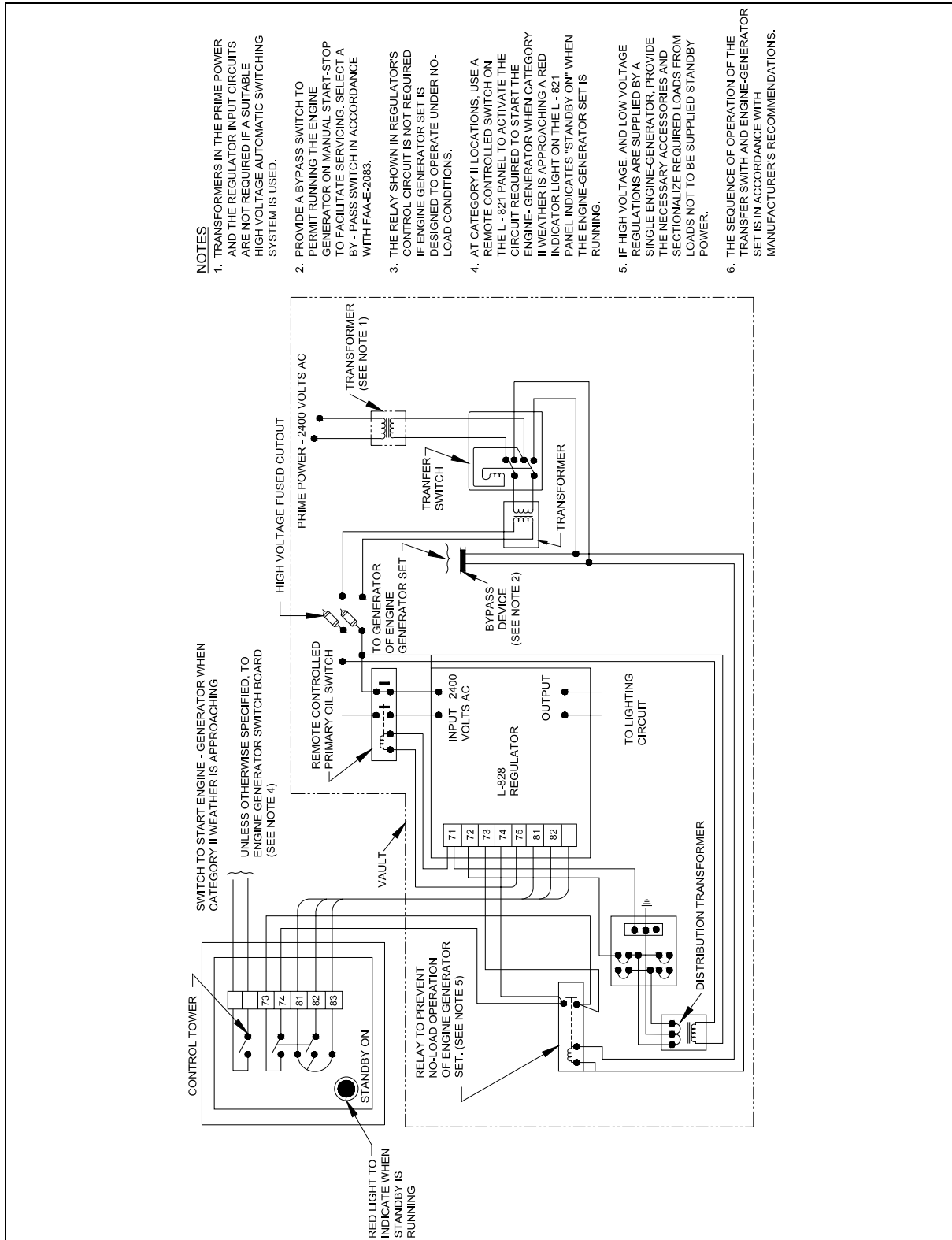


Figure 94. Typical Wiring Diagram for Configuration "A" Electrical Power.

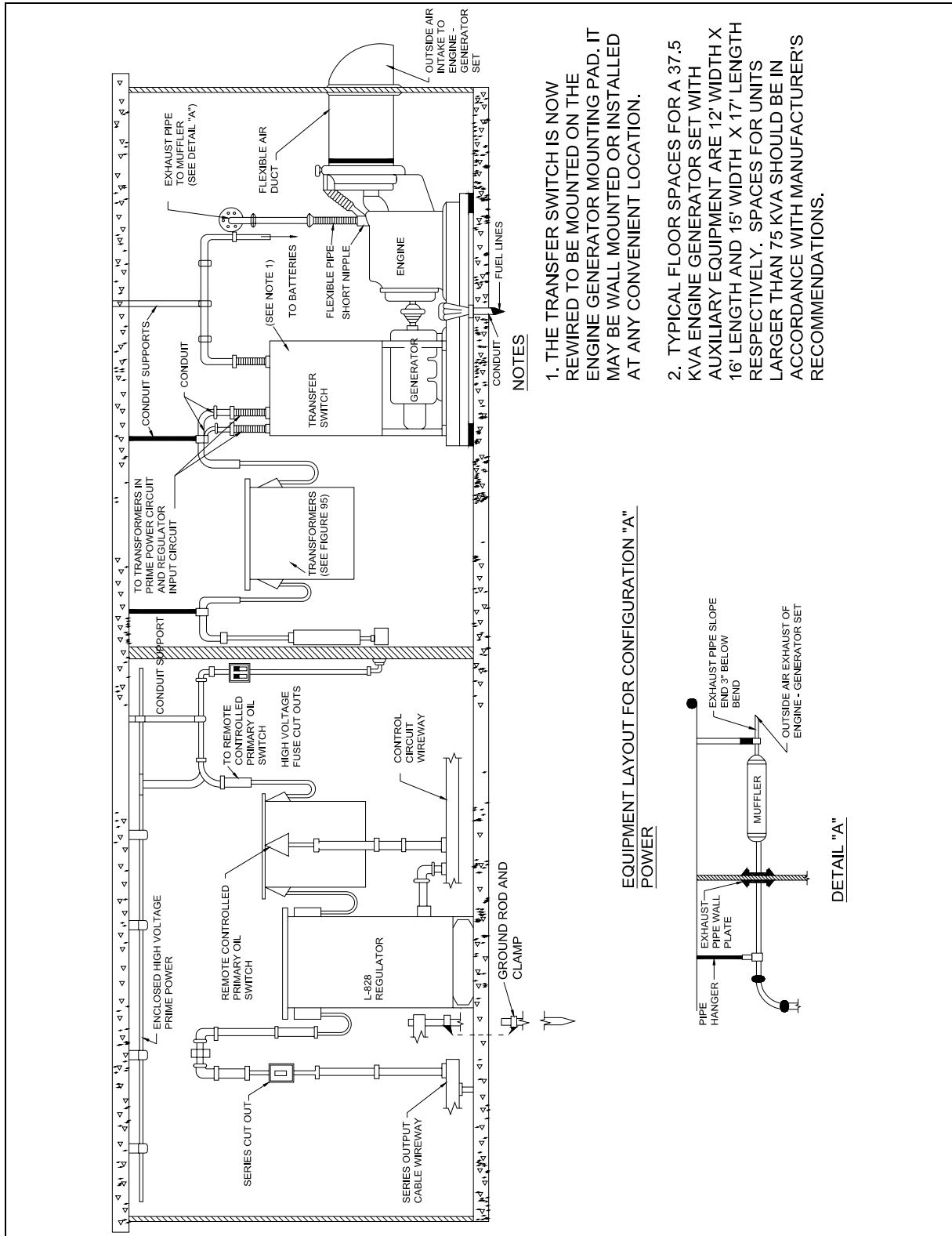


Figure 95. Typical Equipment Layout for Configuration "A" Electrical Power.

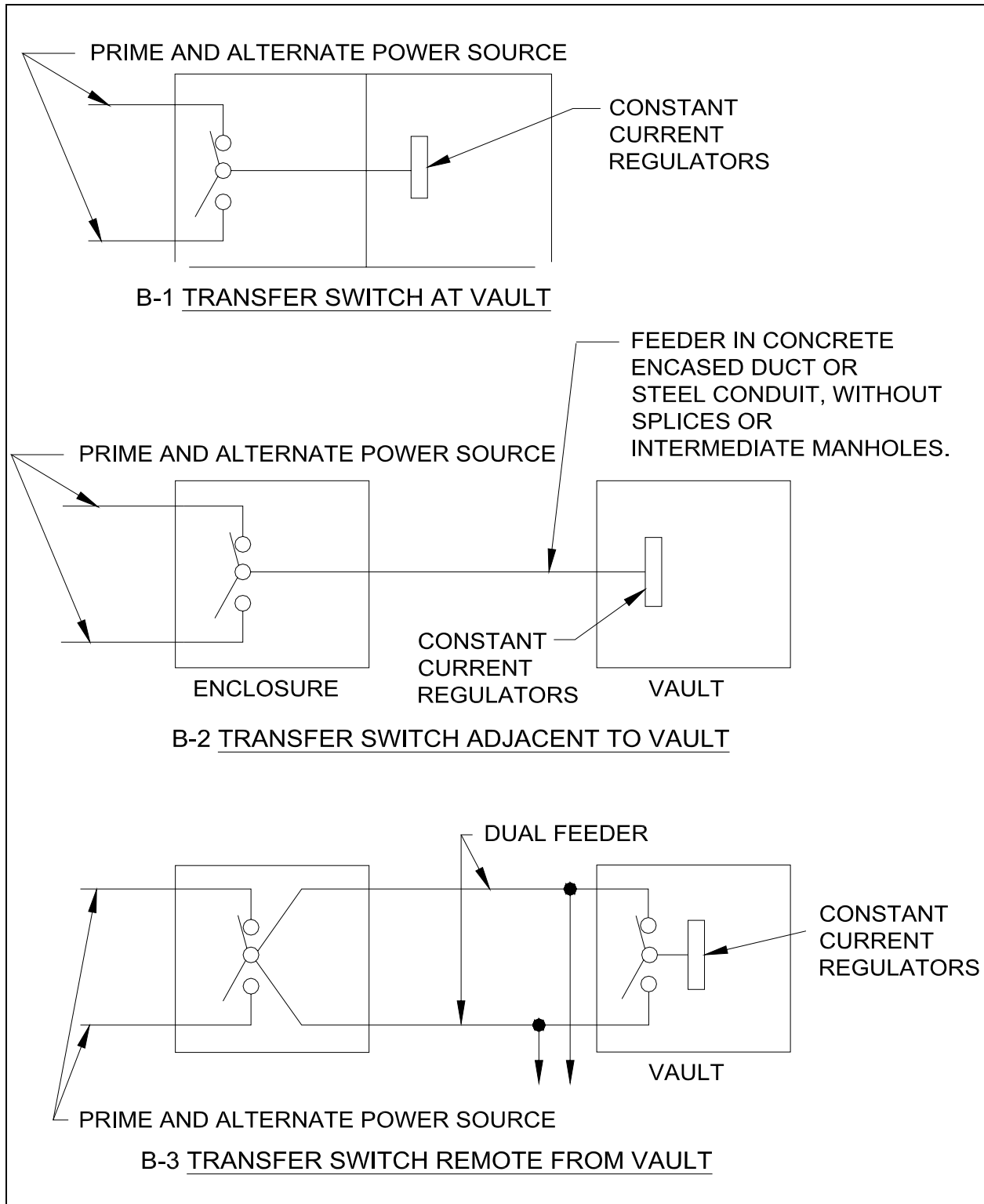


Figure 96. Configuration "B" Electrical Power.



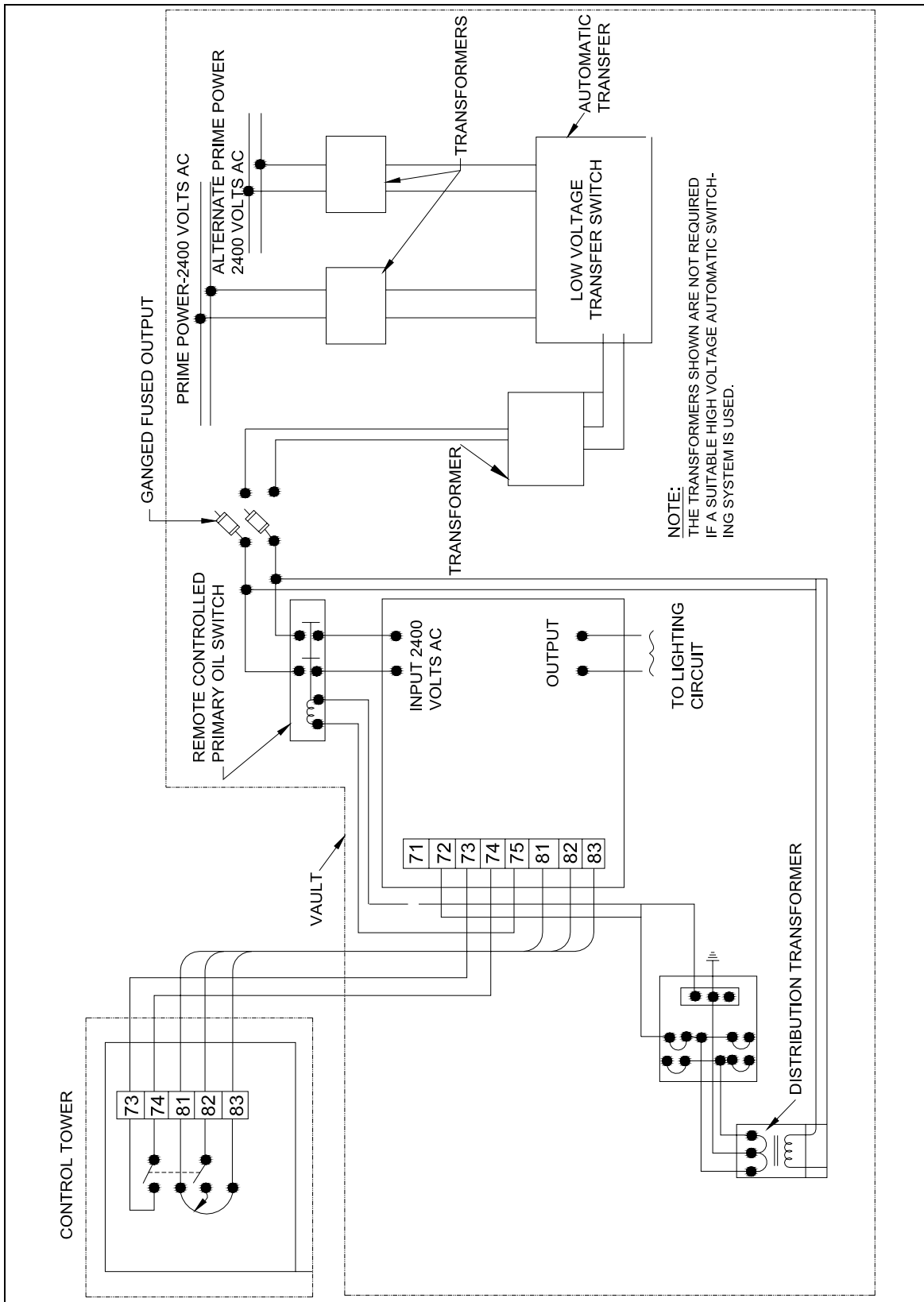


Figure 97. Typical Wiring Diagram for Configuration "B" Electrical Power.

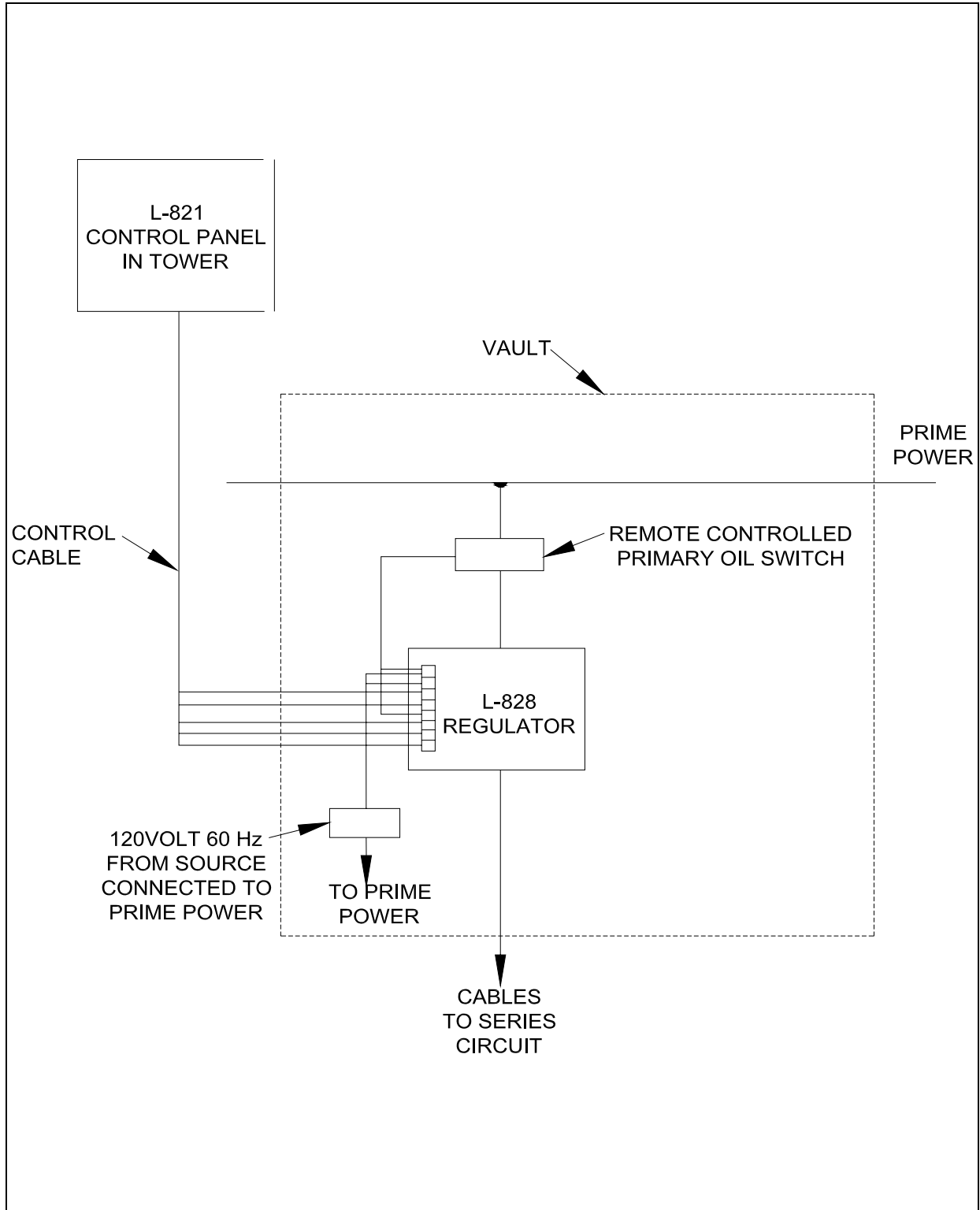


Figure 98. Typical Wiring Diagram for Configuration "C" Power.

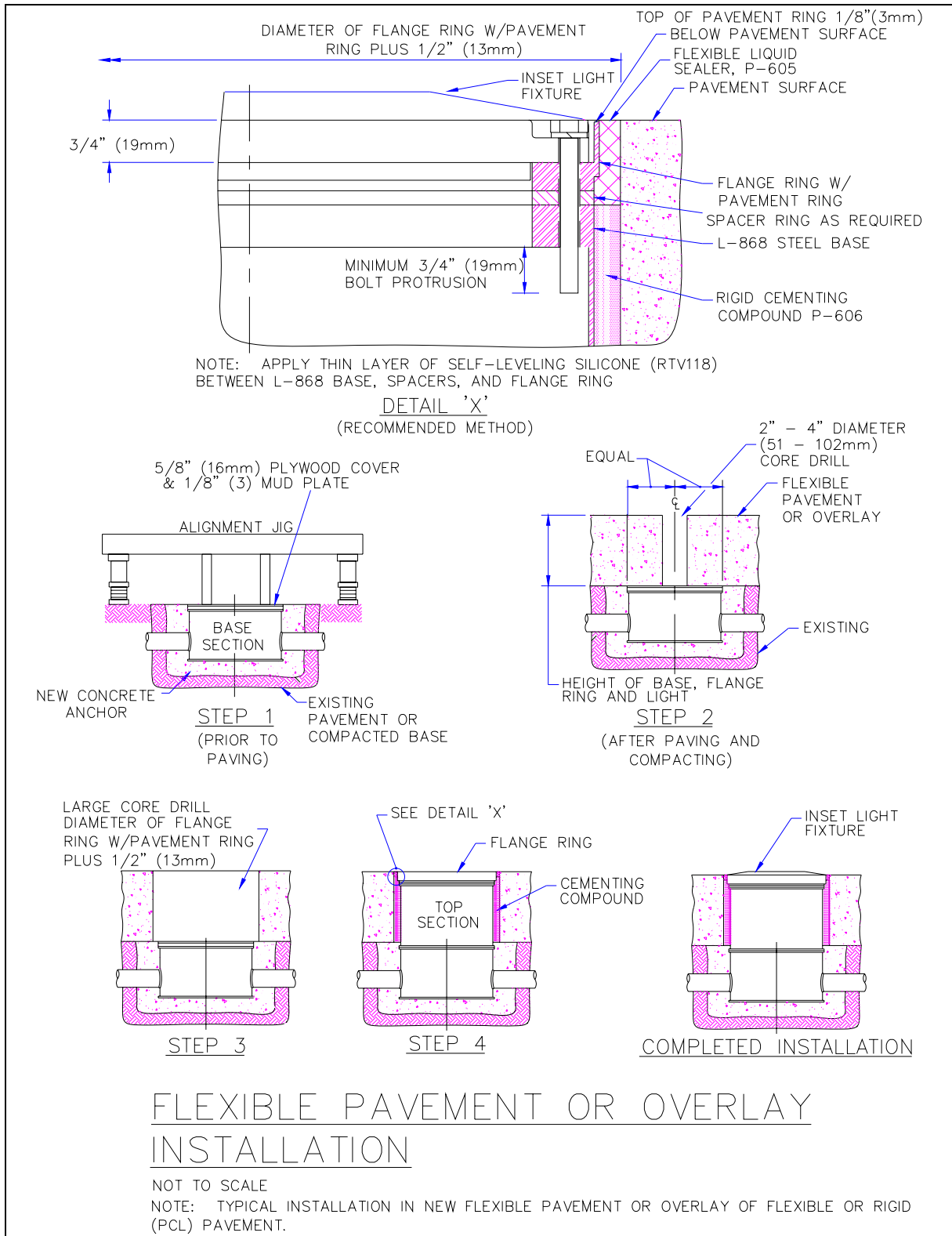


Figure 99. Flexible Pavement or Overlay Installation.

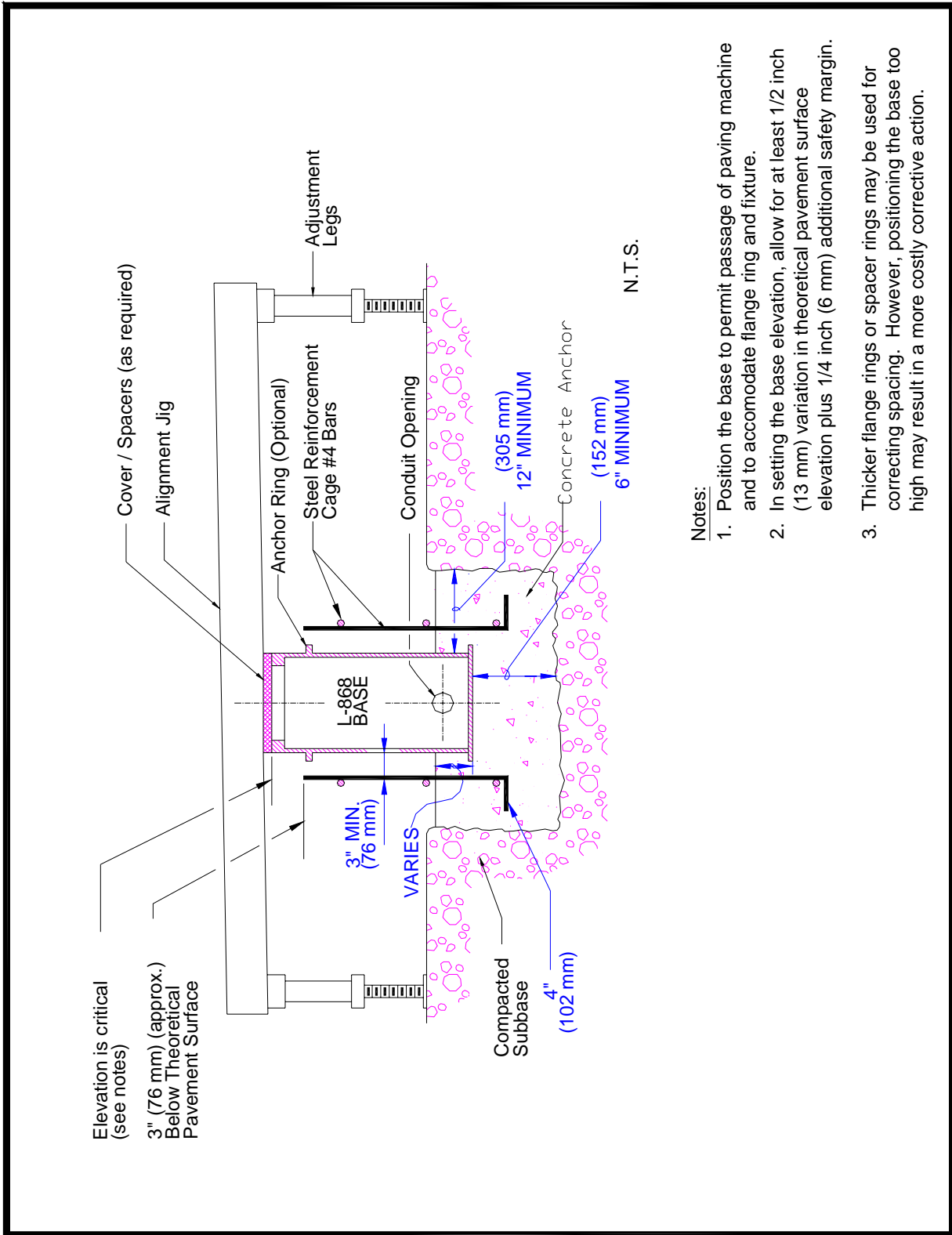


Figure 100. Use of Alignment Jig, No Reference Edge Available, Non-adjustable Base and Conduit System.

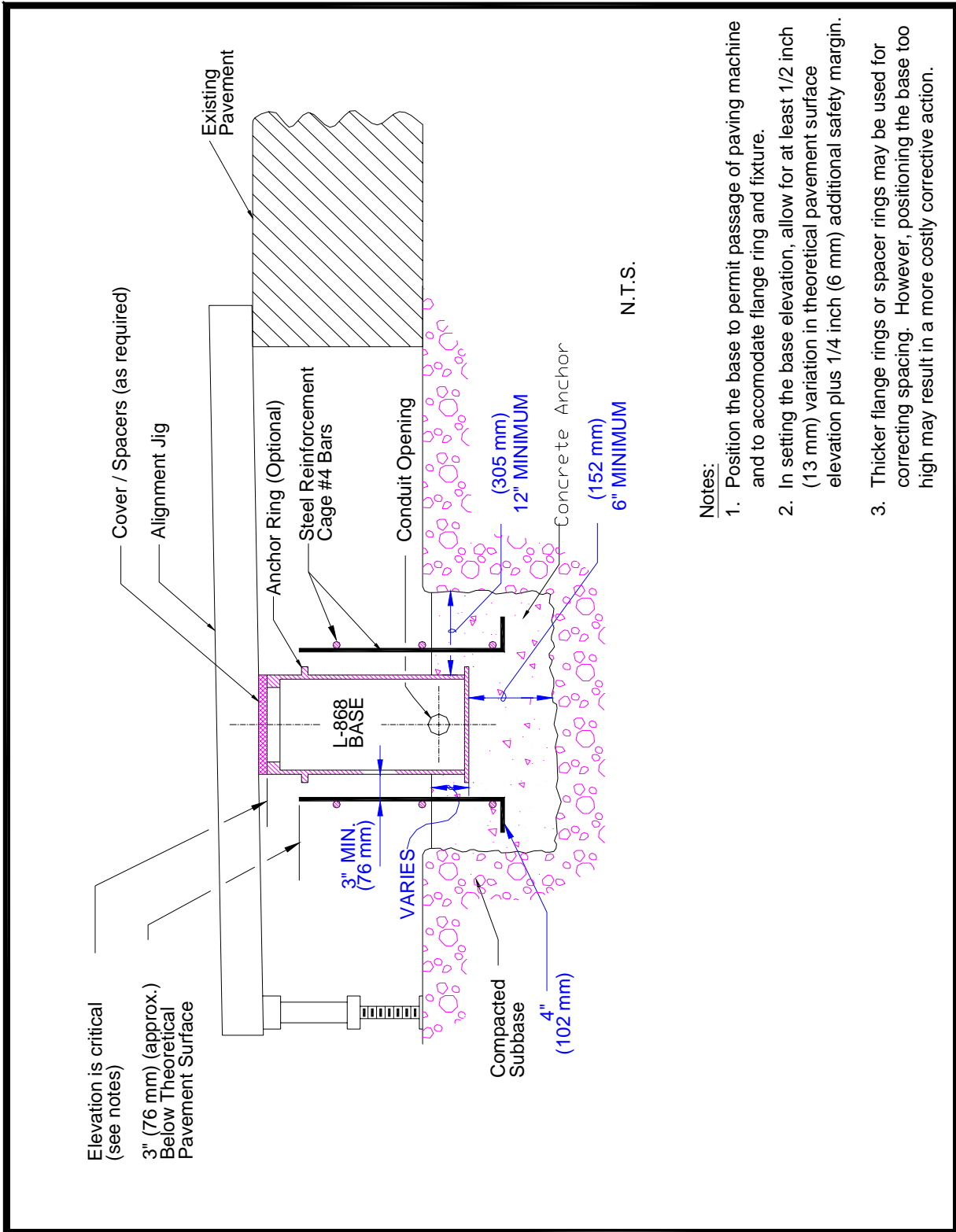


Figure 101. Use of Alignment Jig, Reference Edge Available, Non-adjustable Base and Conduit System.

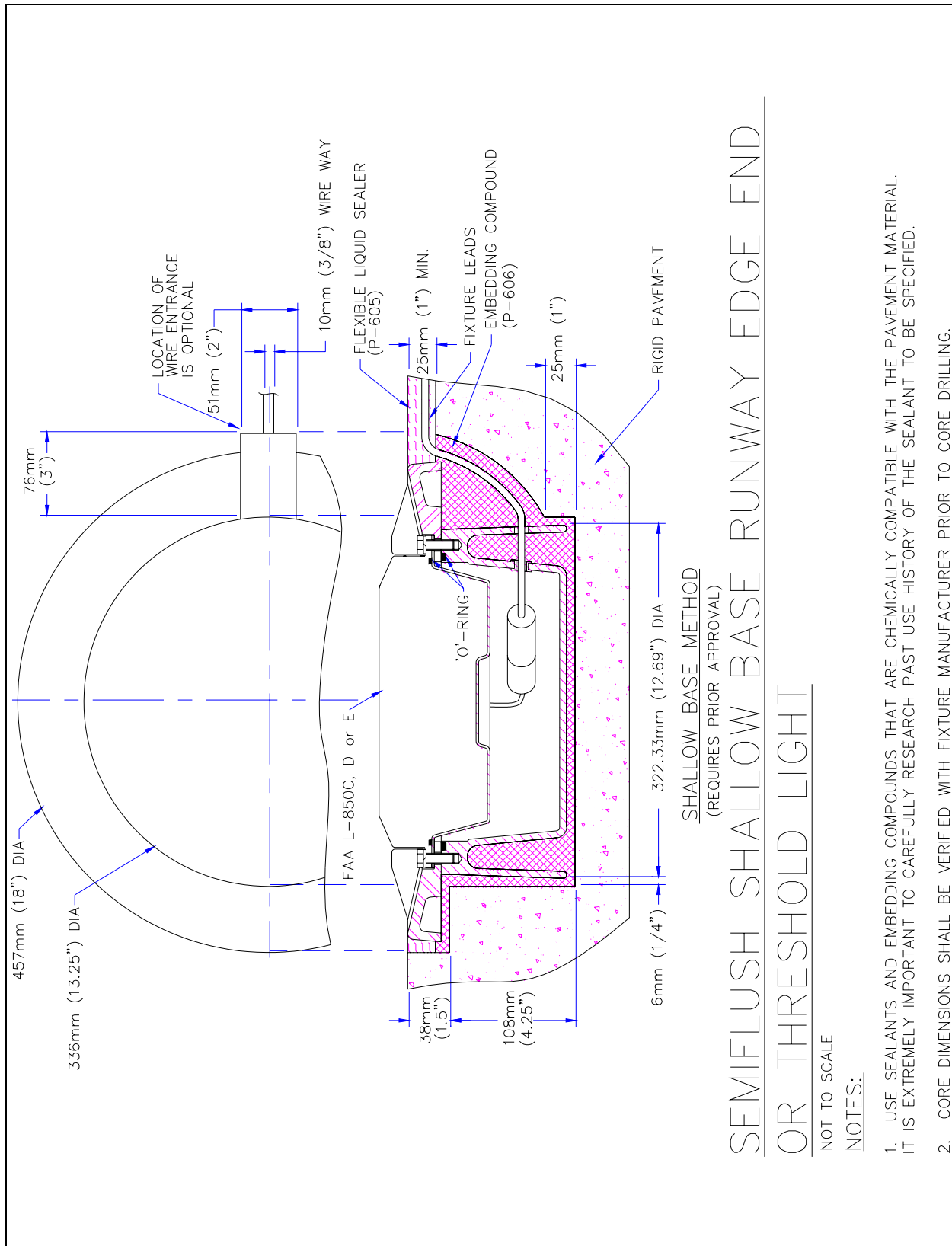


Figure 102. In-pavement Shallow Base Runway Edge End or Threshold Light.

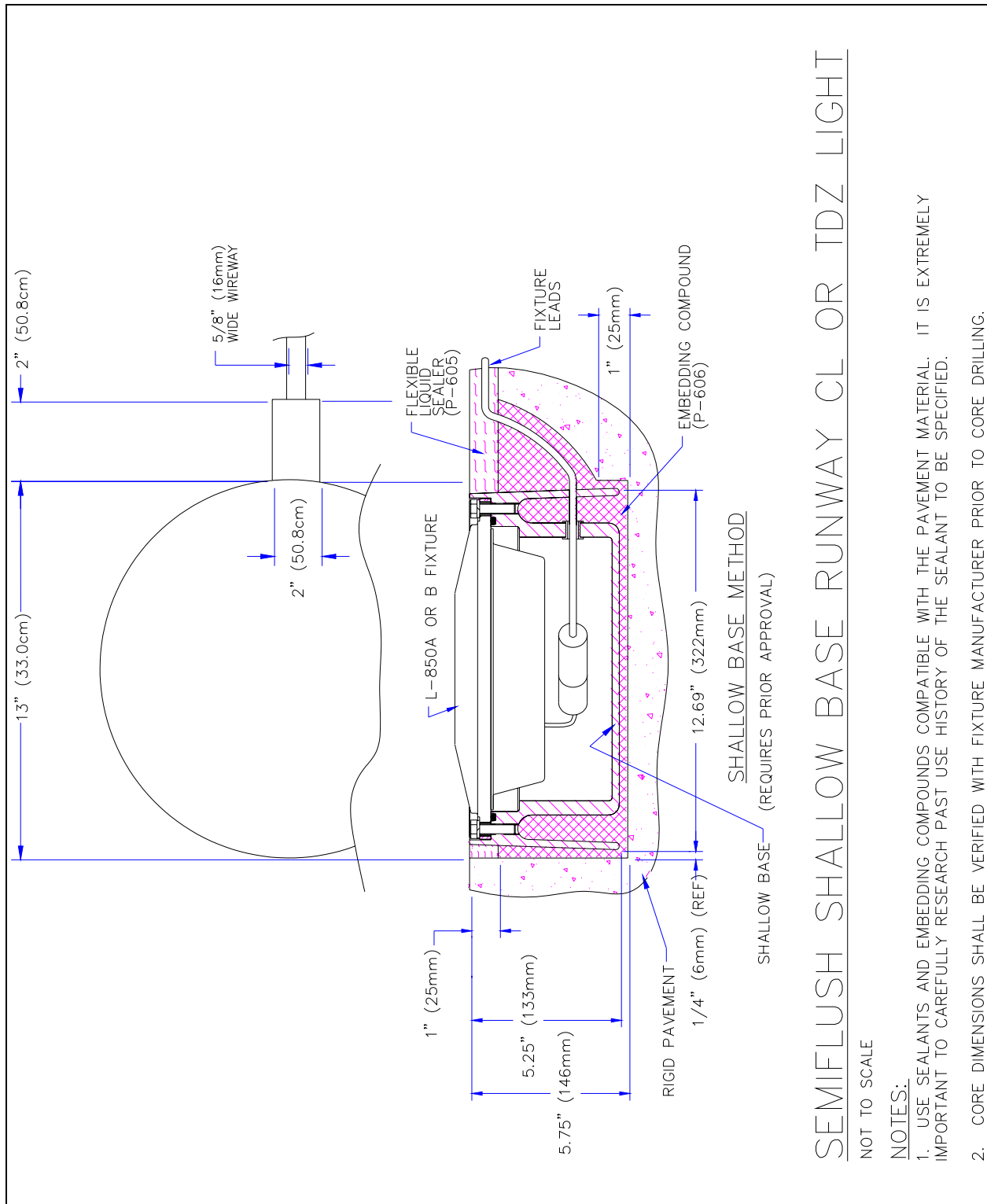


Figure 103. In-pavement Shallow Base Runway Centerline or TDZ Light.

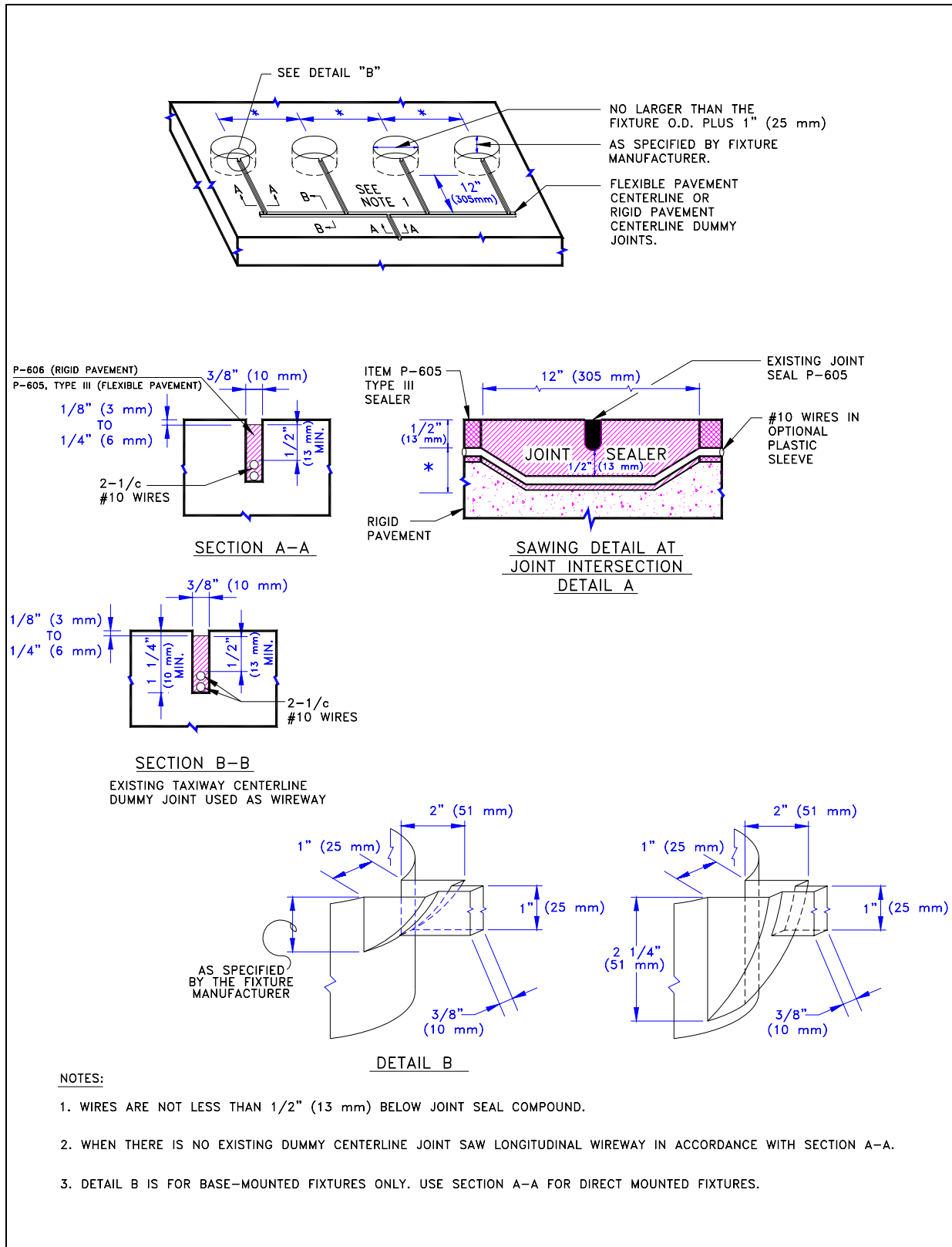


Figure 104. Sawing and Drilling Details for In-Pavement Taxiway Centerline Lights.



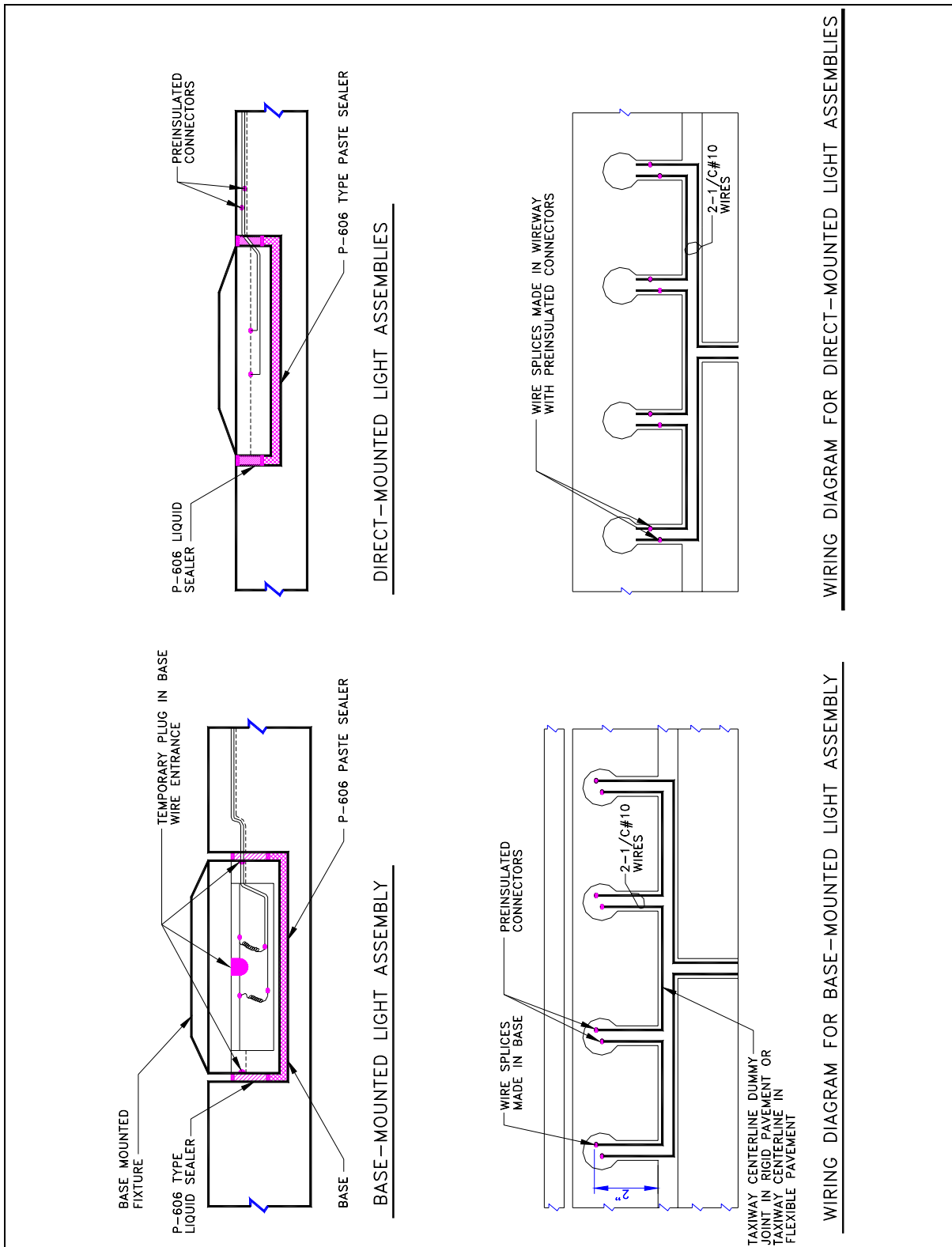


Figure 105. Wiring Details for Direct- and Base-Mounted Taxiway Centerline Lights.

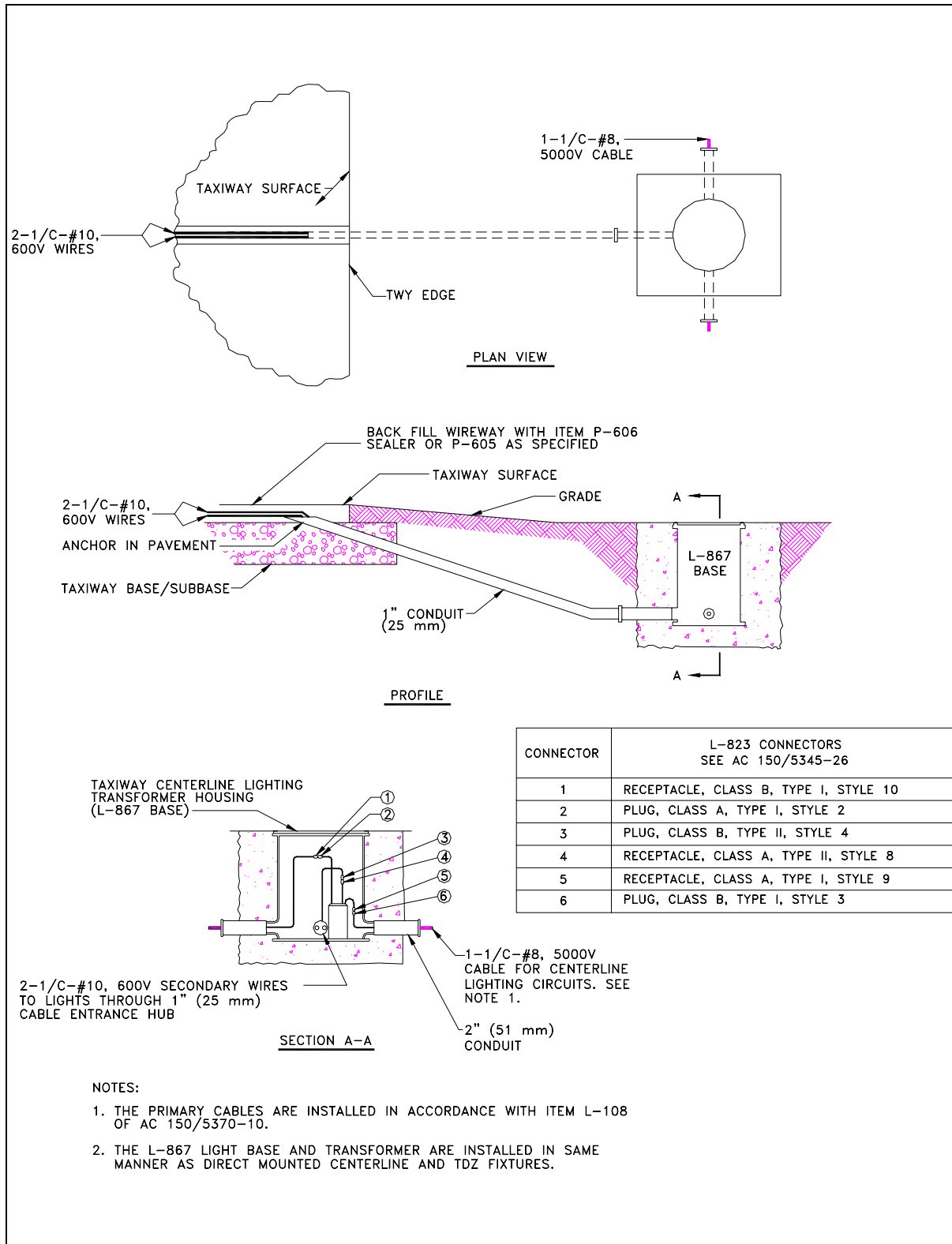


Figure 106. Typical Transformer Housing and Conduit Installation Details for Taxiway Centerline Lights.

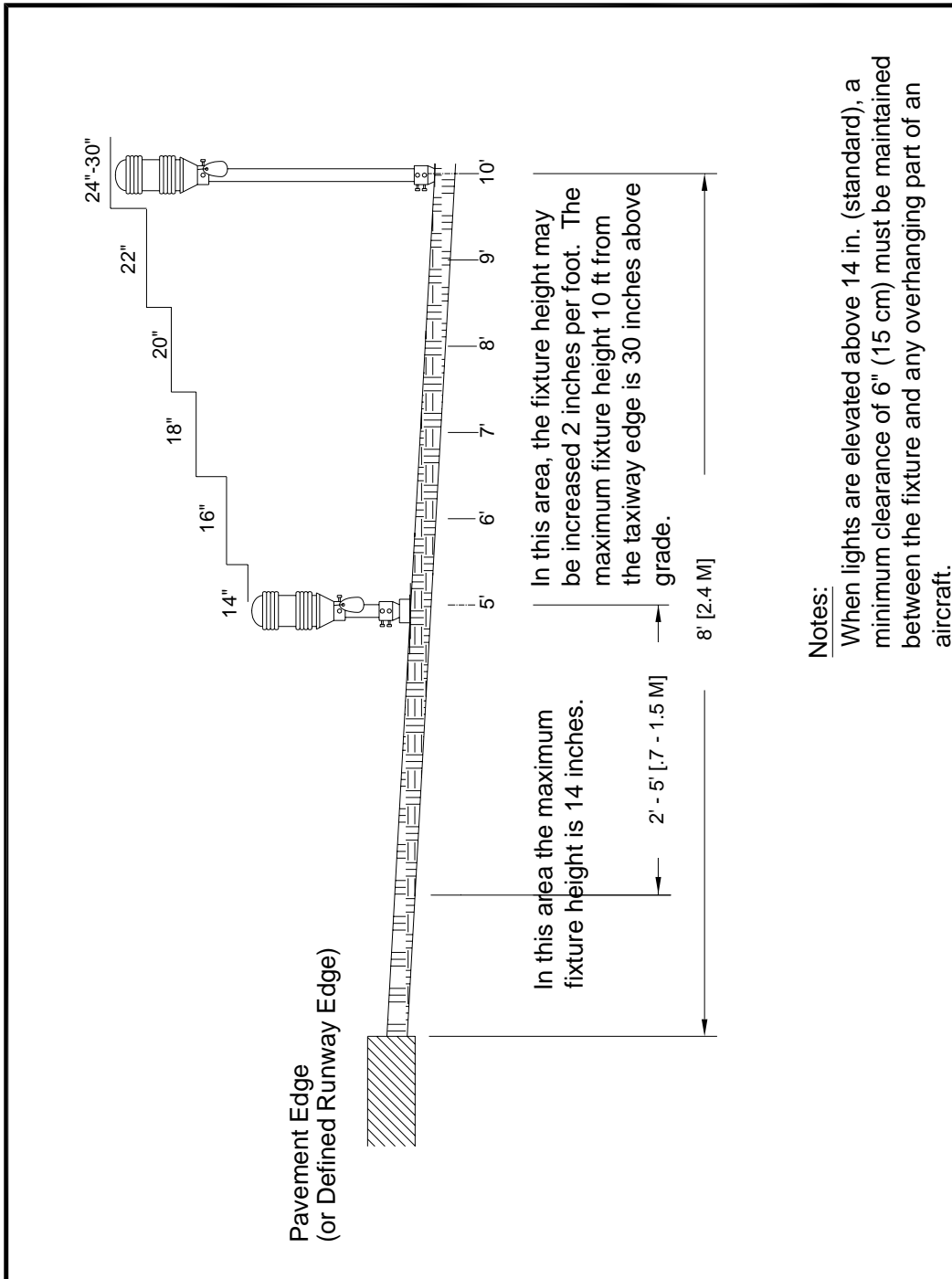


Figure 107. Adjustment of Edge Light Elevation for High Snowfall Areas.

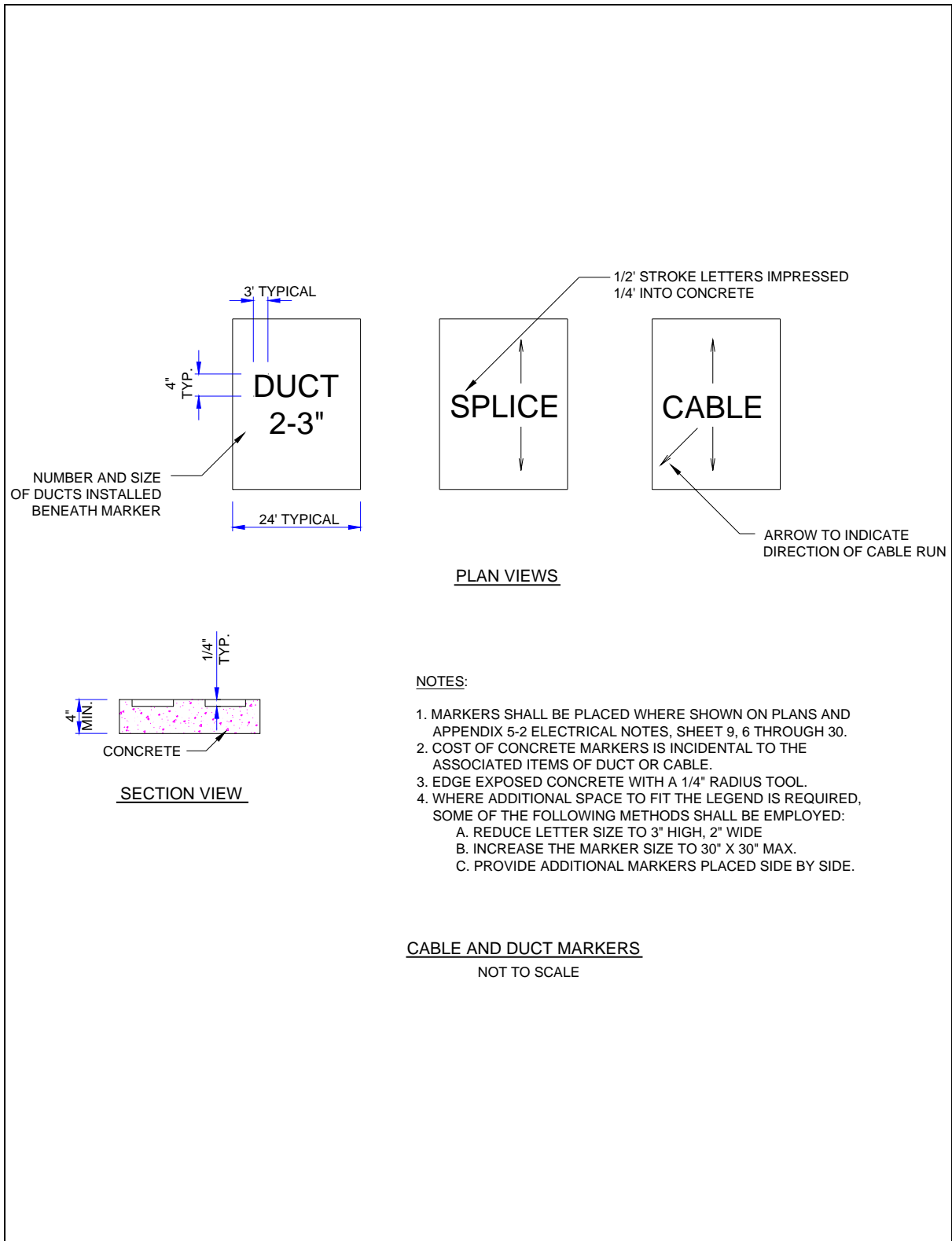


Figure 108. Cable and Duct Markers.

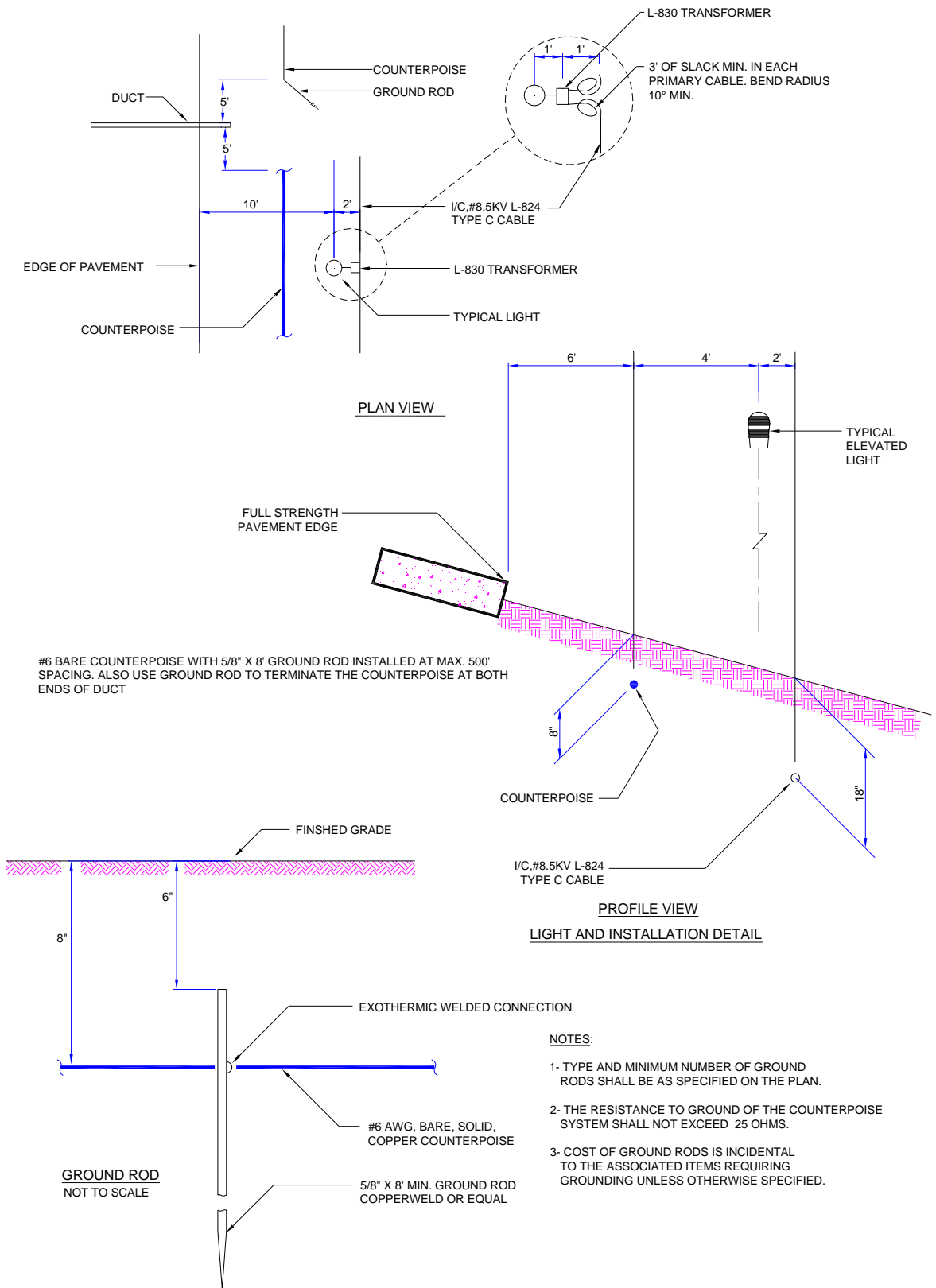


Figure 109. Counterpoise Installation.

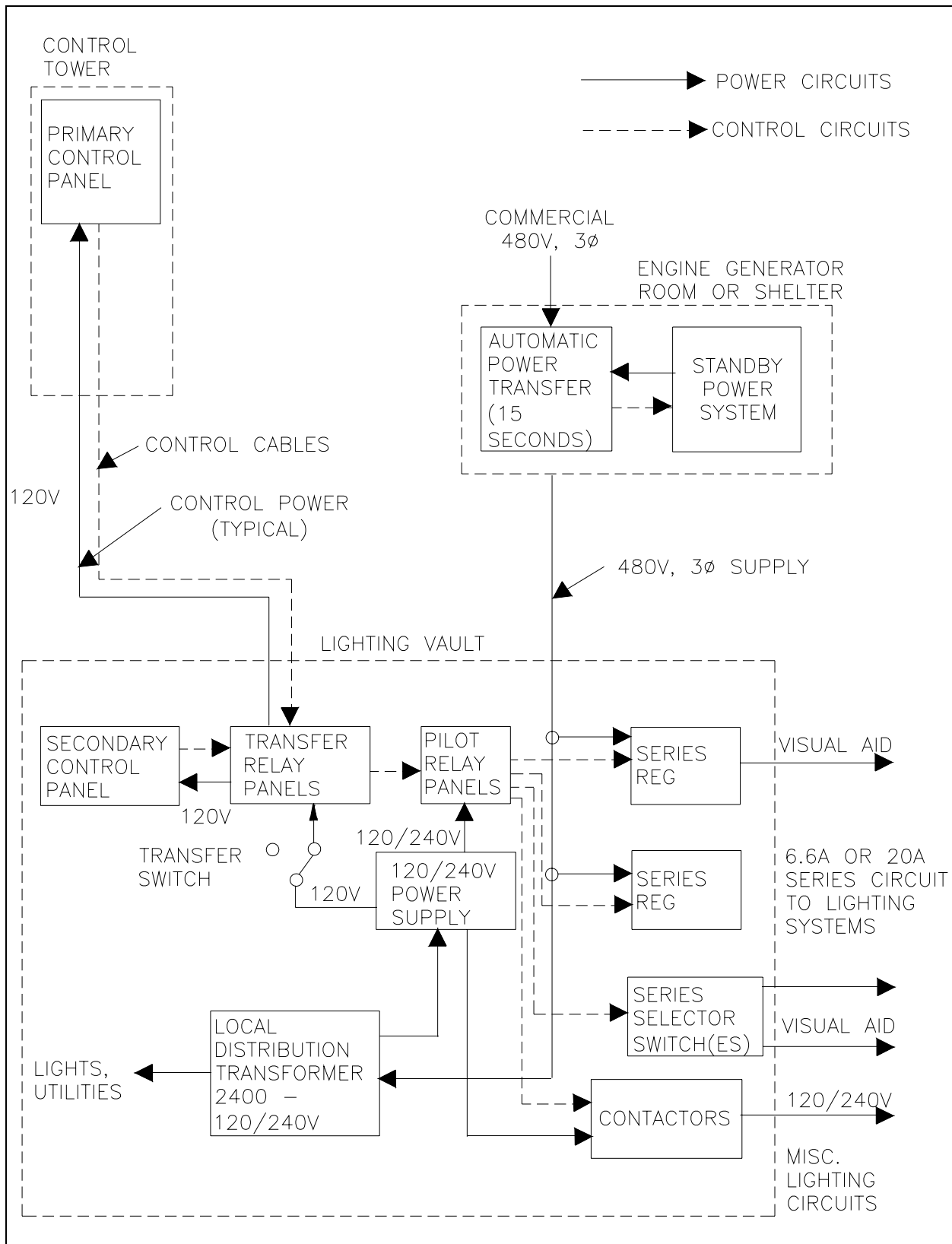


Figure 110. Power and Control System Block Diagram.

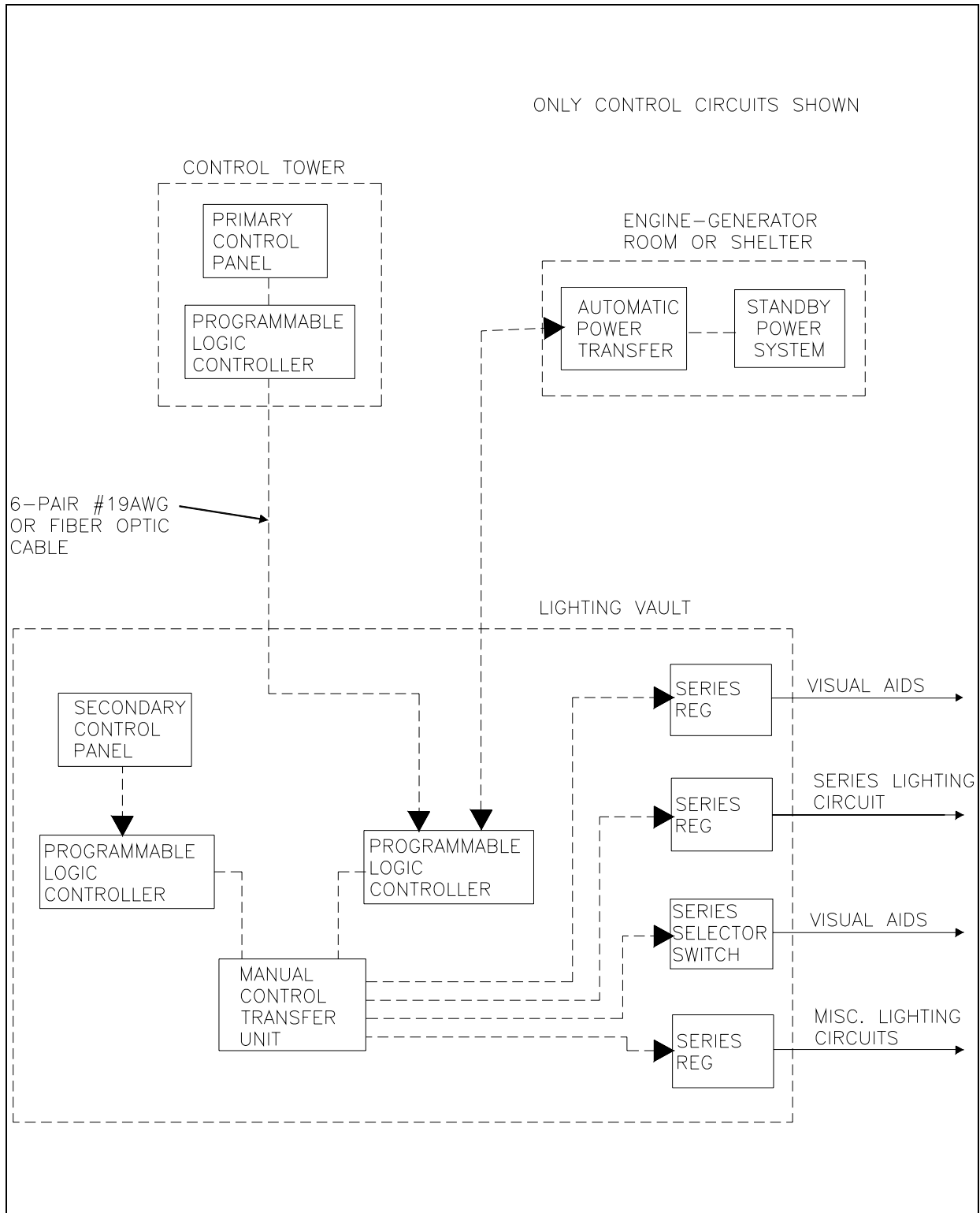


Figure 111. Typical PLC Control System Block Diagram.

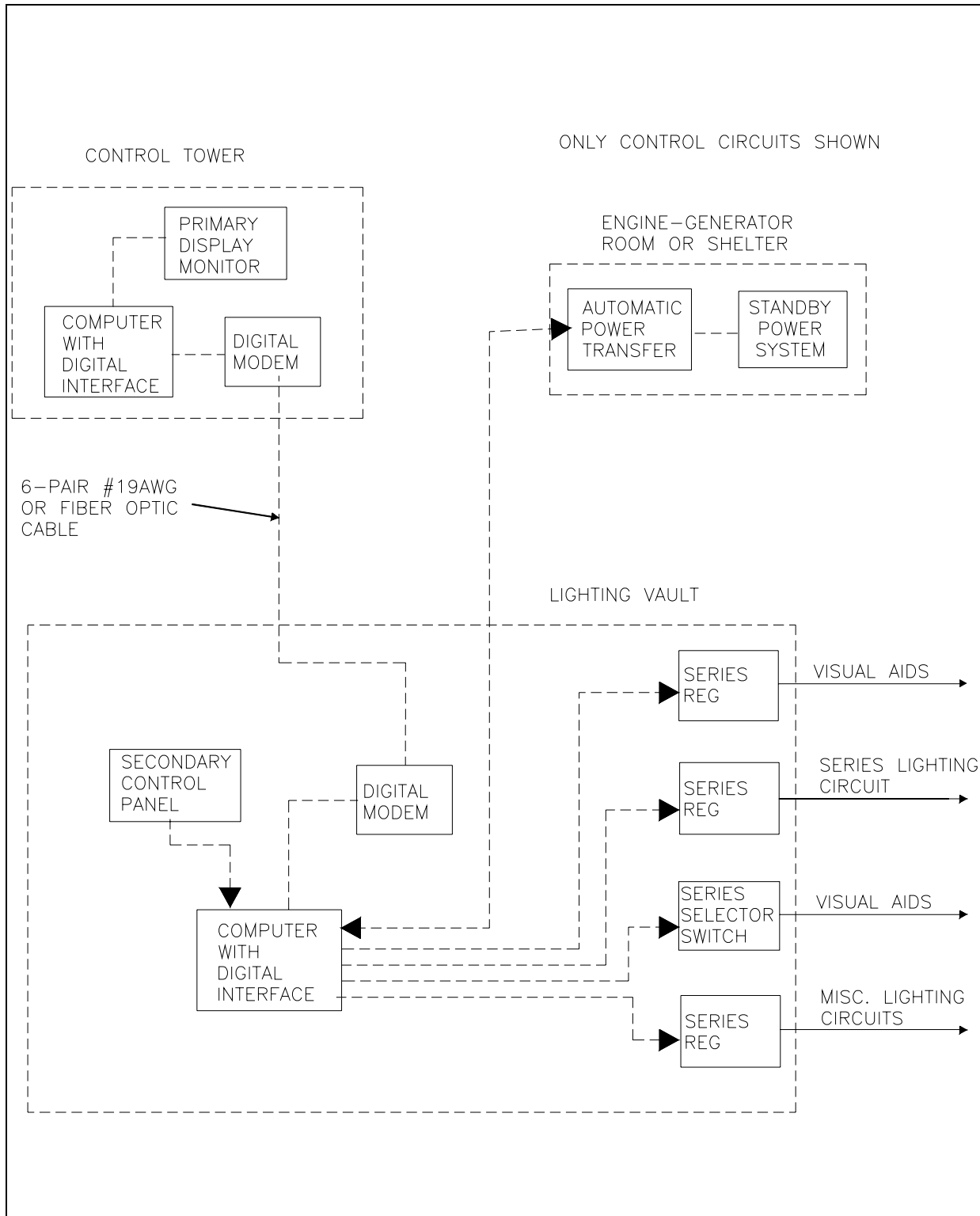


Figure 112. PC Control System Block Diagram.