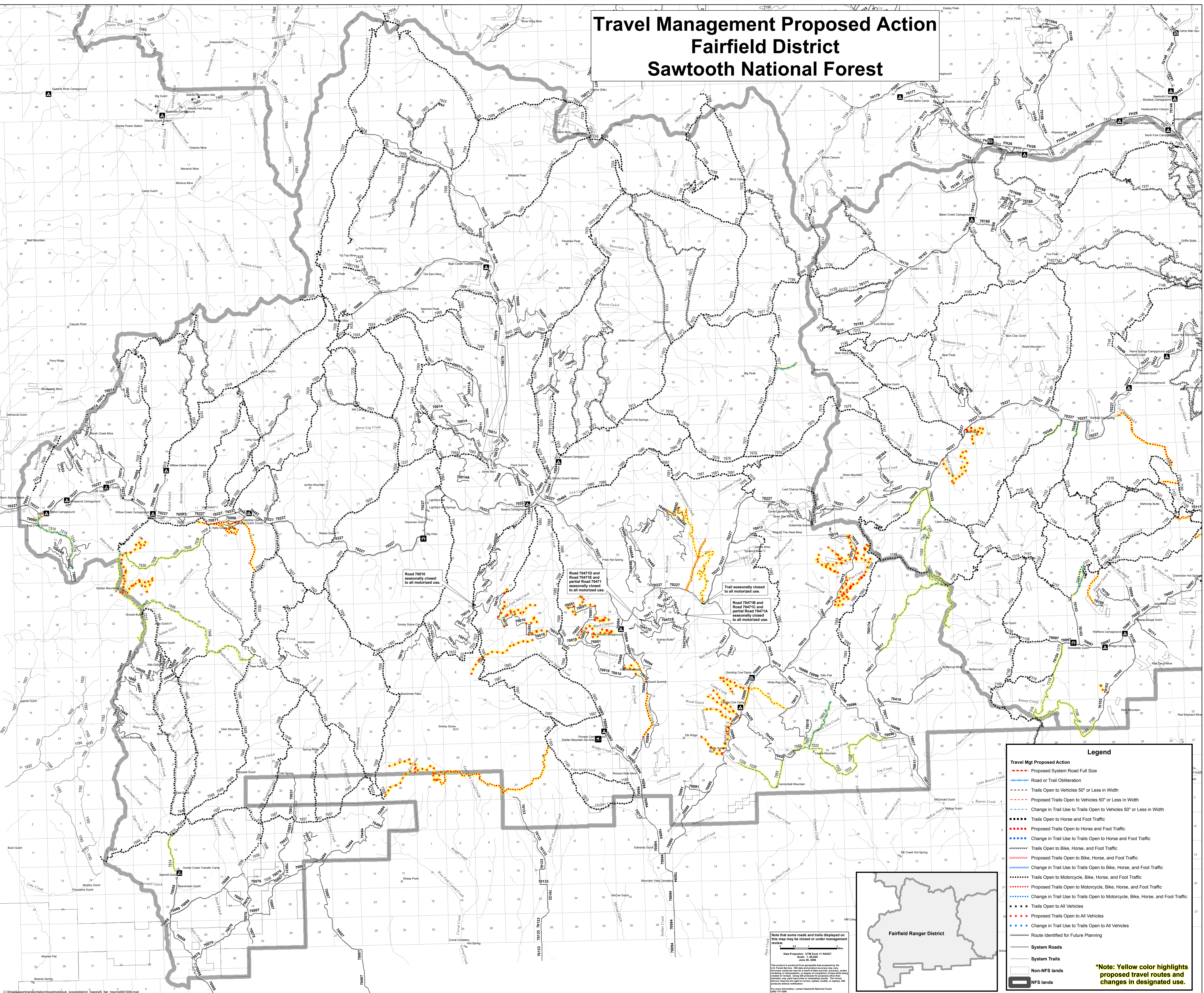


# Travel Management Proposed Action Fairfield District Sawtooth National Forest



### Legend

**Travel Mgt Proposed Action**

- Proposed System Road Full Size
- Road or Trail Obliteration
- Trails Open to Vehicles 50' or Less in Width
- Proposed Trails Open to Vehicles 50' or Less in Width
- Change in Trail Use to Trails Open to Vehicles 50' or Less in Width
- Trails Open to Horse and Foot Traffic
- Proposed Trails Open to Horse and Foot Traffic
- Change in Trail Use to Trails Open to Horse and Foot Traffic
- Trails Open to Bike, Horse, and Foot Traffic
- Proposed Trails Open to Bike, Horse, and Foot Traffic
- Change in Trail Use to Trails Open to Bike, Horse, and Foot Traffic
- Trails Open to Motorcycle, Bike, Horse, and Foot Traffic
- Proposed Trails Open to Motorcycle, Bike, Horse, and Foot Traffic
- Change in Trail Use to Trails Open to Motorcycle, Bike, Horse, and Foot Traffic
- Trails Open to All Vehicles
- Proposed Trails Open to All Vehicles
- Change in Trail Use to Trails Open to All Vehicles
- Route Identified for Future Planning
- System Roads
- System Trails
- Non-NFS lands
- NFS lands

**Note: Yellow color highlights proposed travel routes and changes in designated use.**

Note that some roads and trails displayed on this map may be closed or under management review.

Data Projection: UTM Zone 11 NAD83  
Datum: NAD83  
Date: 25, 2008

This product is produced from geospatial data prepared by the U.S. Forest Service. All data and product accuracy are not warranted or represented, or degree of completion of data being provided or revised. Using this product for purposes other than those intended may result in errors, omissions, or misstatements. The Forest Service reserves the right to correct, update, modify, or replace this product without notification.

For more information, contact Sawtooth National Forest (208) 325-5566.