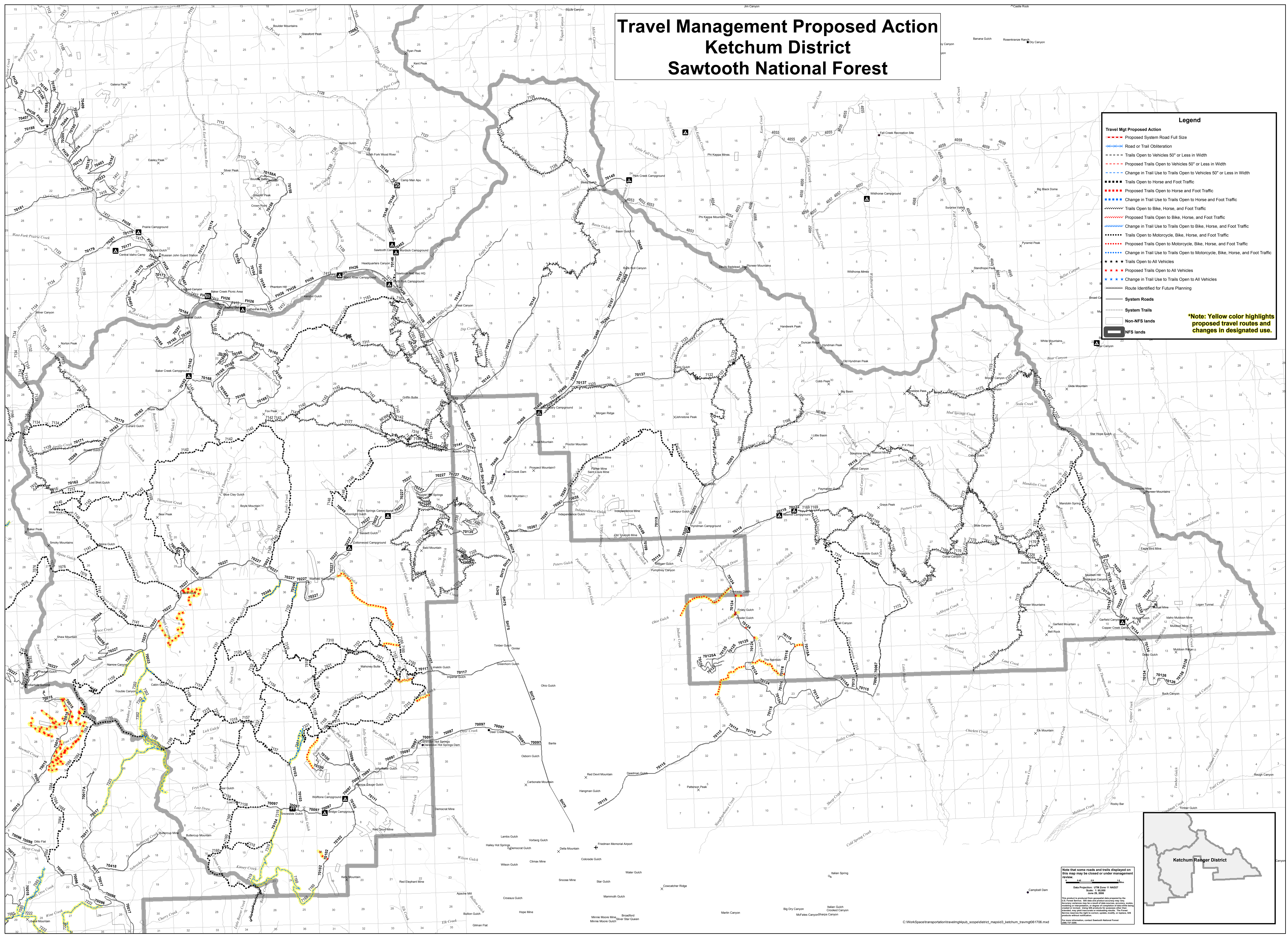


Travel Management Proposed Action Ketchum District Sawtooth National Forest

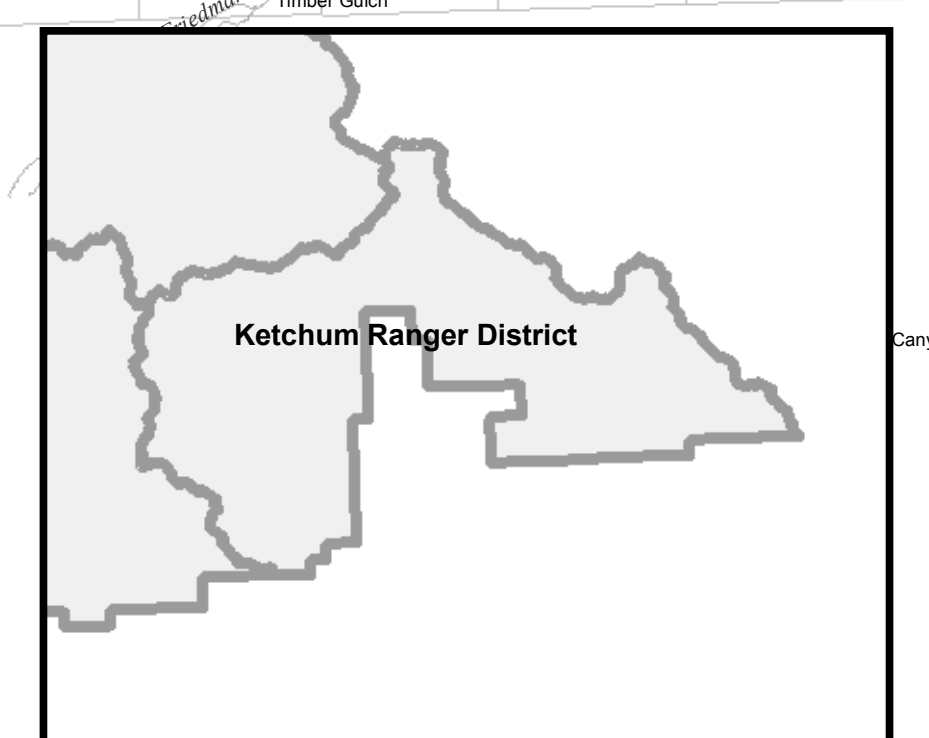


Legend

Travel Mgt Proposed Action

- Proposed System Road Full Size
- Road or Trail Obliteration
- Trails Open to Vehicles 50' or Less in Width
- Proposed Trails Open to Vehicles 50' or Less in Width
- Change in Trail Use to Trails Open to Vehicles 50' or Less in Width
- Trails Open to Horse and Foot Traffic
- Proposed Trails Open to Horse and Foot Traffic
- Change in Trail Use to Trails Open to Horse and Foot Traffic
- Trails Open to Bike, Horse, and Foot Traffic
- Proposed Trails Open to Bike, Horse, and Foot Traffic
- Change in Trail Use to Trails Open to Bike, Horse, and Foot Traffic
- Trails Open to Motorcycle, Bike, Horse, and Foot Traffic
- Proposed Trails Open to Motorcycle, Bike, Horse, and Foot Traffic
- Change in Trail Use to Trails Open to Motorcycle, Bike, Horse, and Foot Traffic
- Trails Open to All Vehicles
- Proposed Trails Open to All Vehicles
- Change in Trail Use to Trails Open to All Vehicles
- Route Identified for Future Planning
- System Roads
- System Trails
- Non-NFS lands
- NFS lands

Note: Yellow color highlights proposed travel routes and changes in designated use.



Notes that some roads and trails displayed on this map may be closed or under management review.

Scale: 1:50,000
Date: 11/11/2022
Scale: 1:50,000
Date: 11/11/2022

This product is produced from geospatial data prepared by the U.S. Forest Service. All data and product creation was done using ArcGIS software. All data and product creation was done using ArcGIS software. All data and product creation was done using ArcGIS software.