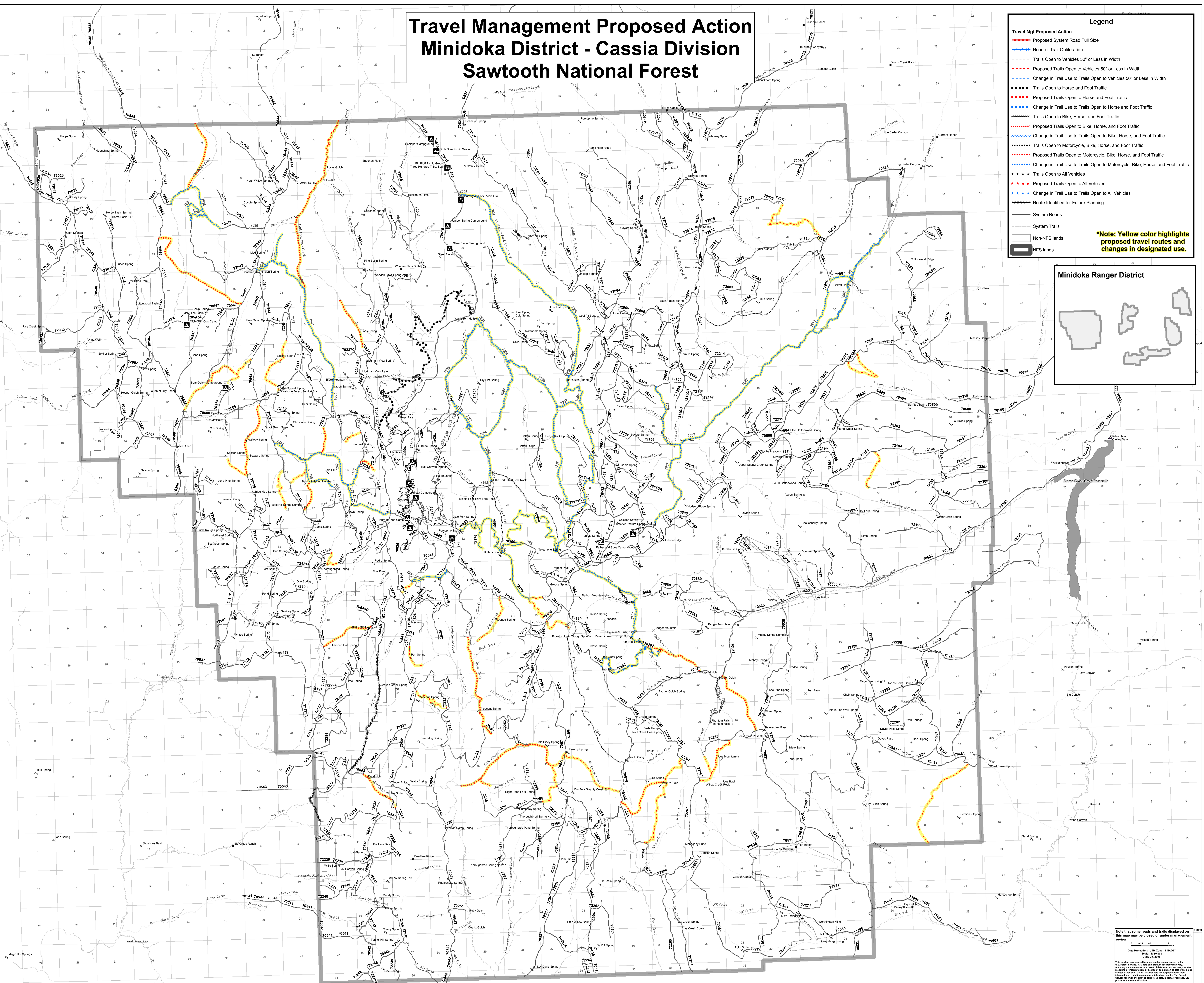
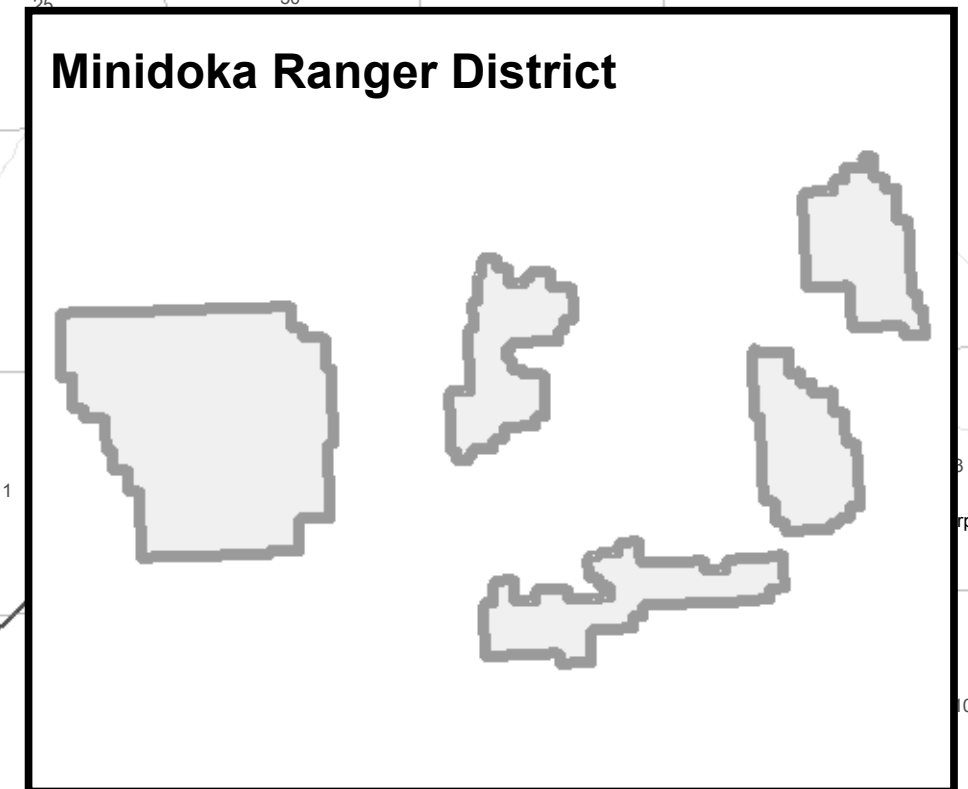


# Travel Management Proposed Action Minidoka District - Cassia Division Sawtooth National Forest

**Legend**

- Proposed System Road Full Size
- Road or Trail Obliteration
- Trails Open to Vehicles 50' or Less in Width
- Proposed Trails Open to Vehicles 50' or Less in Width
- Change in Trail Use to Trails Open to Vehicles 50' or Less in Width
- Proposed Trails Open to Horse and Foot Traffic
- Change in Trail Use to Trails Open to Horse and Foot Traffic
- Trails Open to Bike, Horse, and Foot Traffic
- Proposed Trails Open to Bike, Horse, and Foot Traffic
- Change in Trail Use to Trails Open to Bike, Horse, and Foot Traffic
- Trails Open to Motorcycle, Bike, Horse, and Foot Traffic
- Proposed Trails Open to Motorcycle, Bike, Horse, and Foot Traffic
- Change in Trail Use to Trails Open to Motorcycle, Bike, Horse, and Foot Traffic
- Trails Open to All Vehicles
- Proposed Trails Open to All Vehicles
- Change in Trail Use to Trails Open to All Vehicles
- Route Identified for Future Planning
- System Roads
- System Trails
- Non-NFS lands
- NFS lands

**Note: Yellow color highlights proposed travel routes and changes in designated use.**



Note that some roads and trails displayed on this map may be closed or under management review.

Scale: 1" = 10,000'

Date: 11/11/2027

This product is produced from geospatial data prepared by the U.S. Forest Service. It is not intended for use in any other context, including but not limited to, navigation, engineering, or other professional applications. The Forest Service does not warrant the accuracy, reliability, or completeness of the data or the product. The Forest Service is not responsible for any errors or omissions in this product. The Forest Service is not responsible for any damages, including consequential damages, arising from the use of this product. The Forest Service is not responsible for any claims, including consequential claims, arising from the use of this product. The Forest Service is not responsible for any claims, including consequential claims, arising from the use of this product.