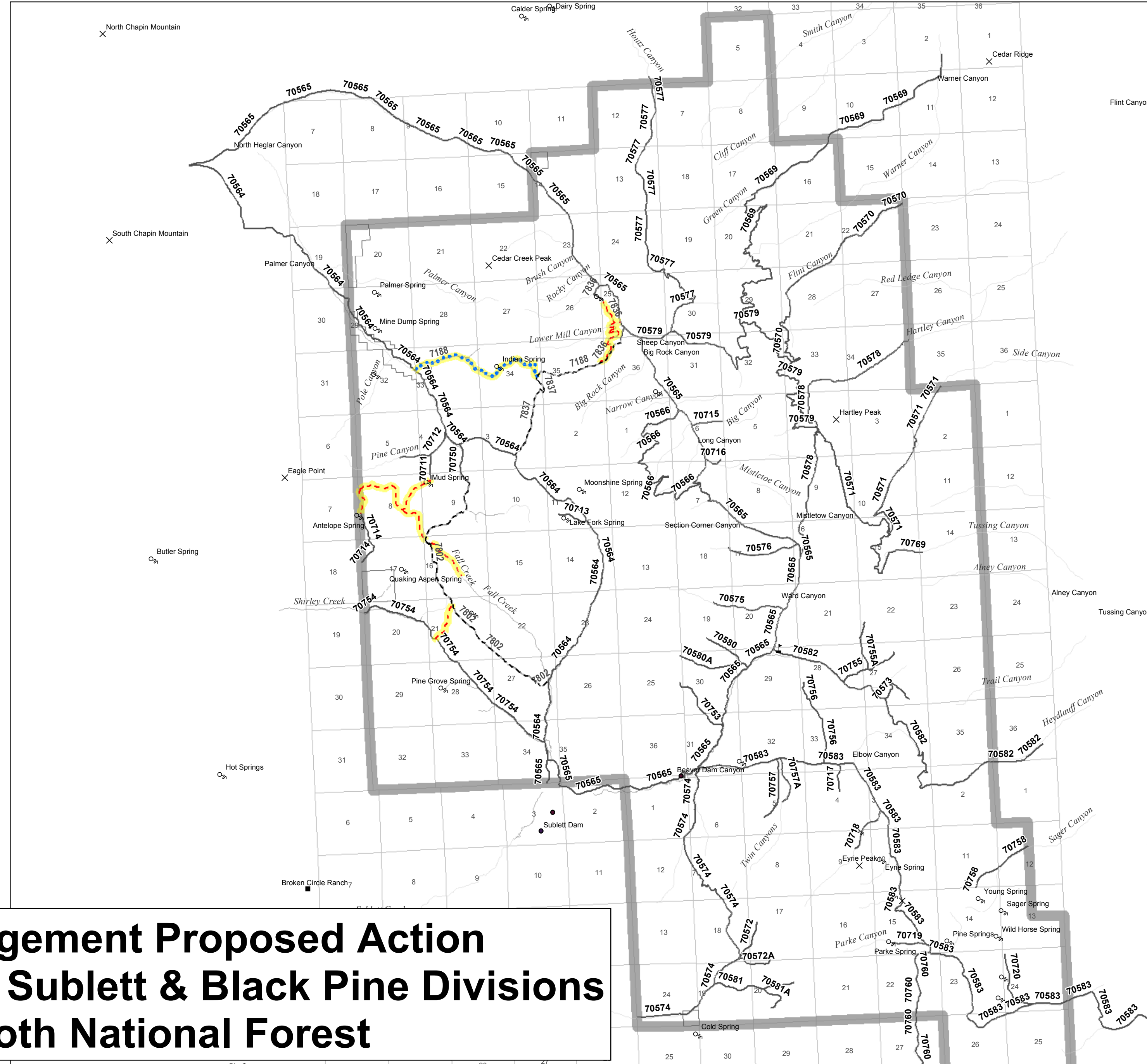
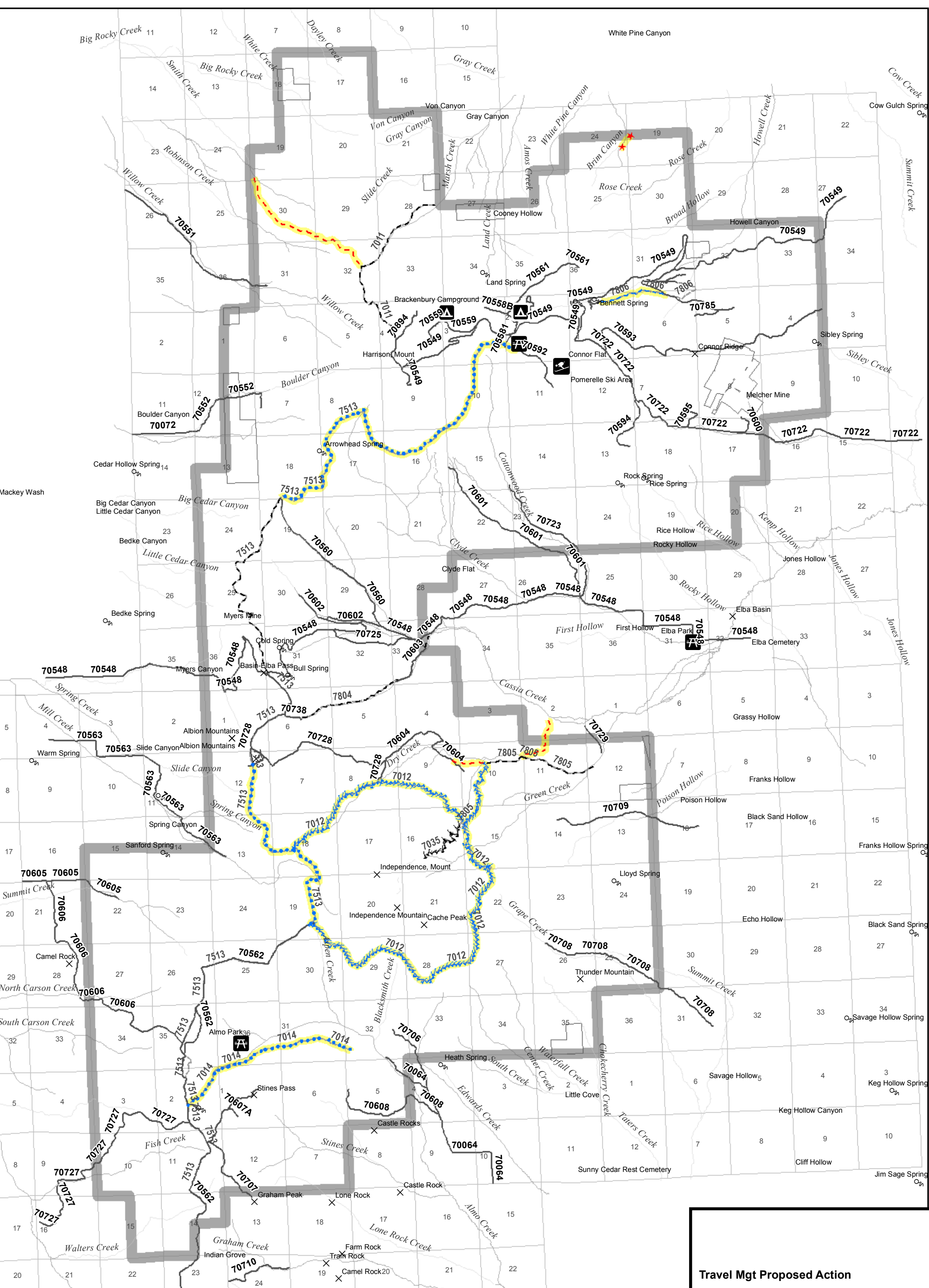
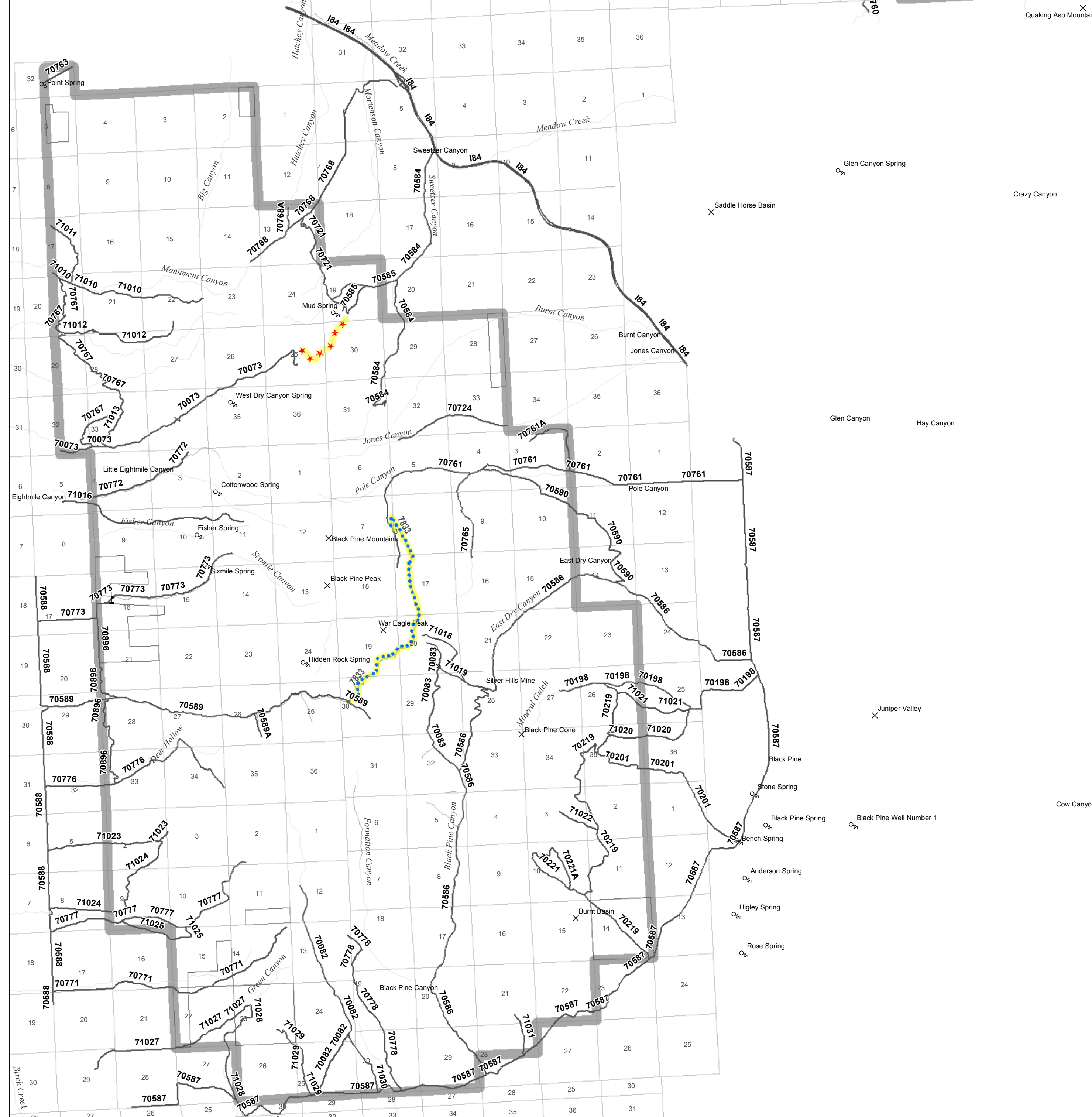


# Travel Management Proposed Action Minidoka District - Albion Division Sawtooth National Forest



# Travel Management Proposed Action Minidoka District - Sublett & Black Pine Divisions Sawtooth National Forest



### Legend

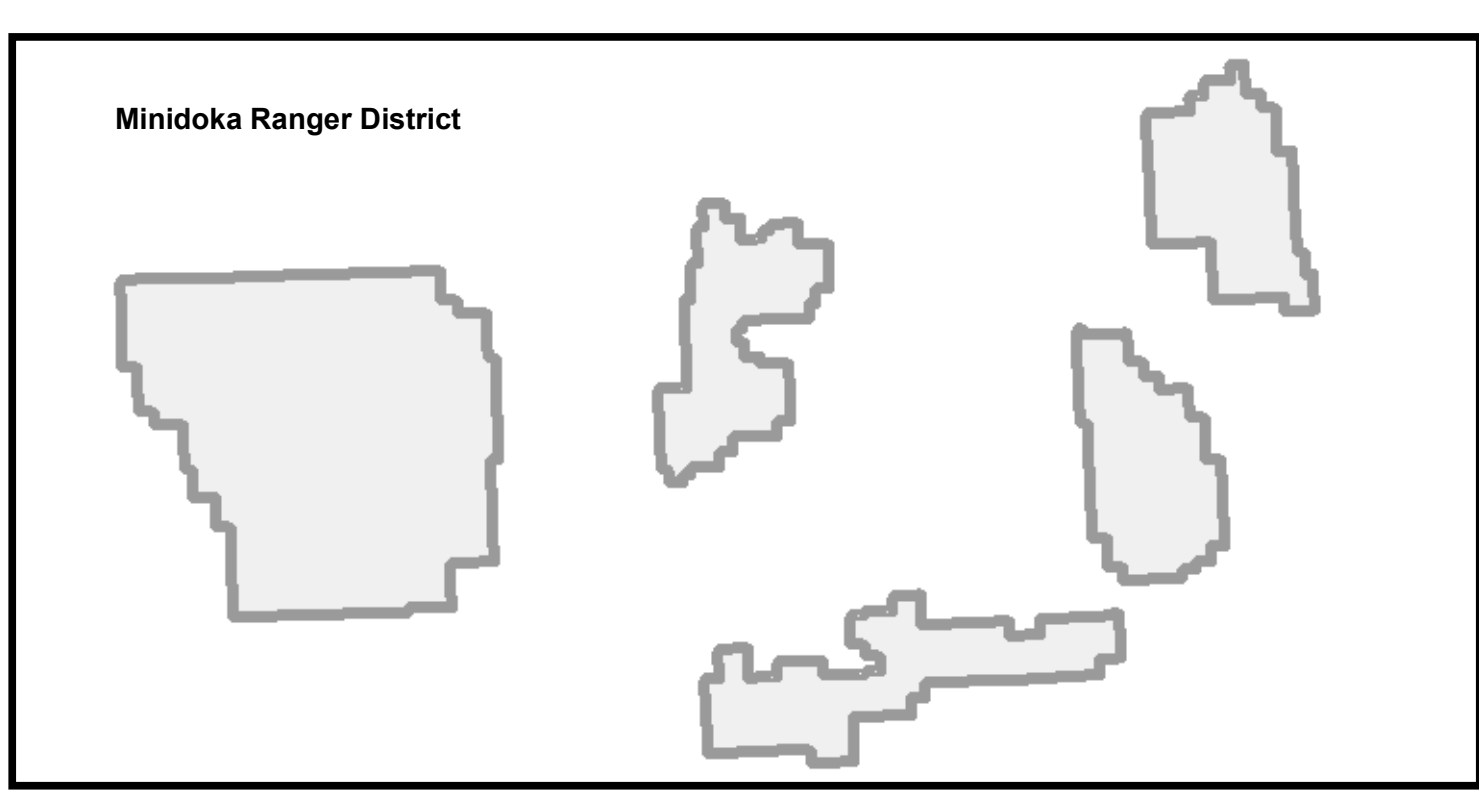
<b>Travel Mgt Proposed Action</b>	— System Roads
— Proposed System Road Full Size	— System Trails
— Road or Trail Obliteration	□ Non-NFS lands
— Trails Open to Vehicles 50' or Less in Width	□ NFS lands
— Proposed Trails Open to Vehicles 50' or Less in Width	
— Change in Trail Use to Trails Open to Vehicles 50' or Less in Width	
— Trails Open to Horse and Foot Traffic	
— Proposed Trails Open to Horse and Foot Traffic	
— Change in Trail Use to Trails Open to Horse and Foot Traffic	
— Trails Open to Bike, Horse, and Foot Traffic	
— Proposed Trails Open to Bike, Horse, and Foot Traffic	
— Change in Trail Use to Trails Open to Bike, Horse, and Foot Traffic	
— Trails Open to Motorcycle, Bike, Horse, and Foot Traffic	
— Proposed Trails Open to Motorcycle, Bike, Horse, and Foot Traffic	
— Change in Trail Use to Trails Open to Motorcycle, Bike, Horse, and Foot Traffic	
— Trails Open to All Vehicles	
— Proposed Trails Open to All Vehicles	
— Change in Trail Use to Trails Open to All Vehicles	
— Route Identified for Future Planning	

**\*Note: Yellow color highlights proposed travel routes and changes in designated use.**

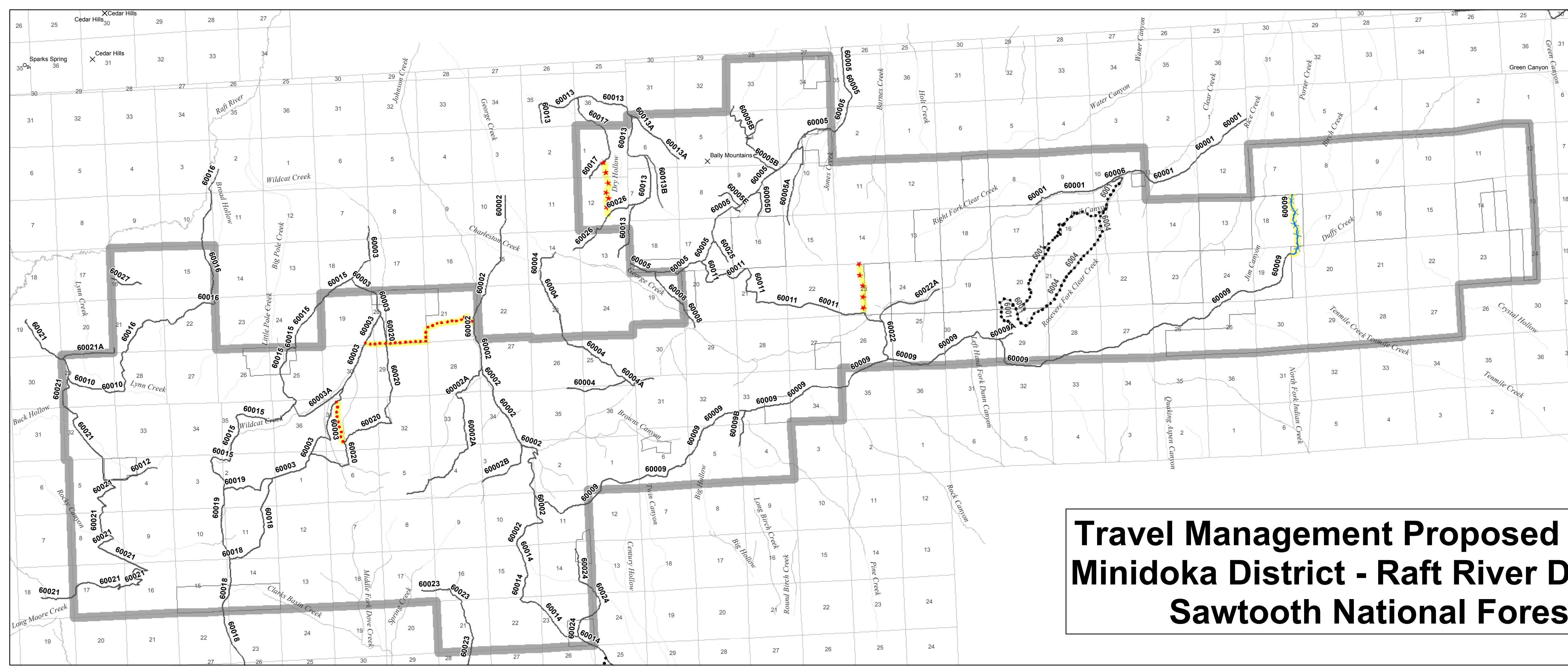
Note that some roads and trails displayed on this map may be closed or under management review.

Scale: 1:10,000  
Date: June 23, 2009

This product is produced from geospatial data prepared by the U.S. Forest Service. GIS data and geospatial accuracy are not guaranteed. It is the user's responsibility to verify the accuracy, completeness, and currency of the data. The U.S. Forest Service is not responsible for any errors or omissions in this product. For more information, contact Sawtooth National Forest (208) 721-2559.



C:\WorkSpace\transportation\traveling\map\scope\dist\map\dist\_1\albion\rafter\sublett\rafter\061608.mxd



# Travel Management Proposed Action Minidoka District - Raft River Division Sawtooth National Forest