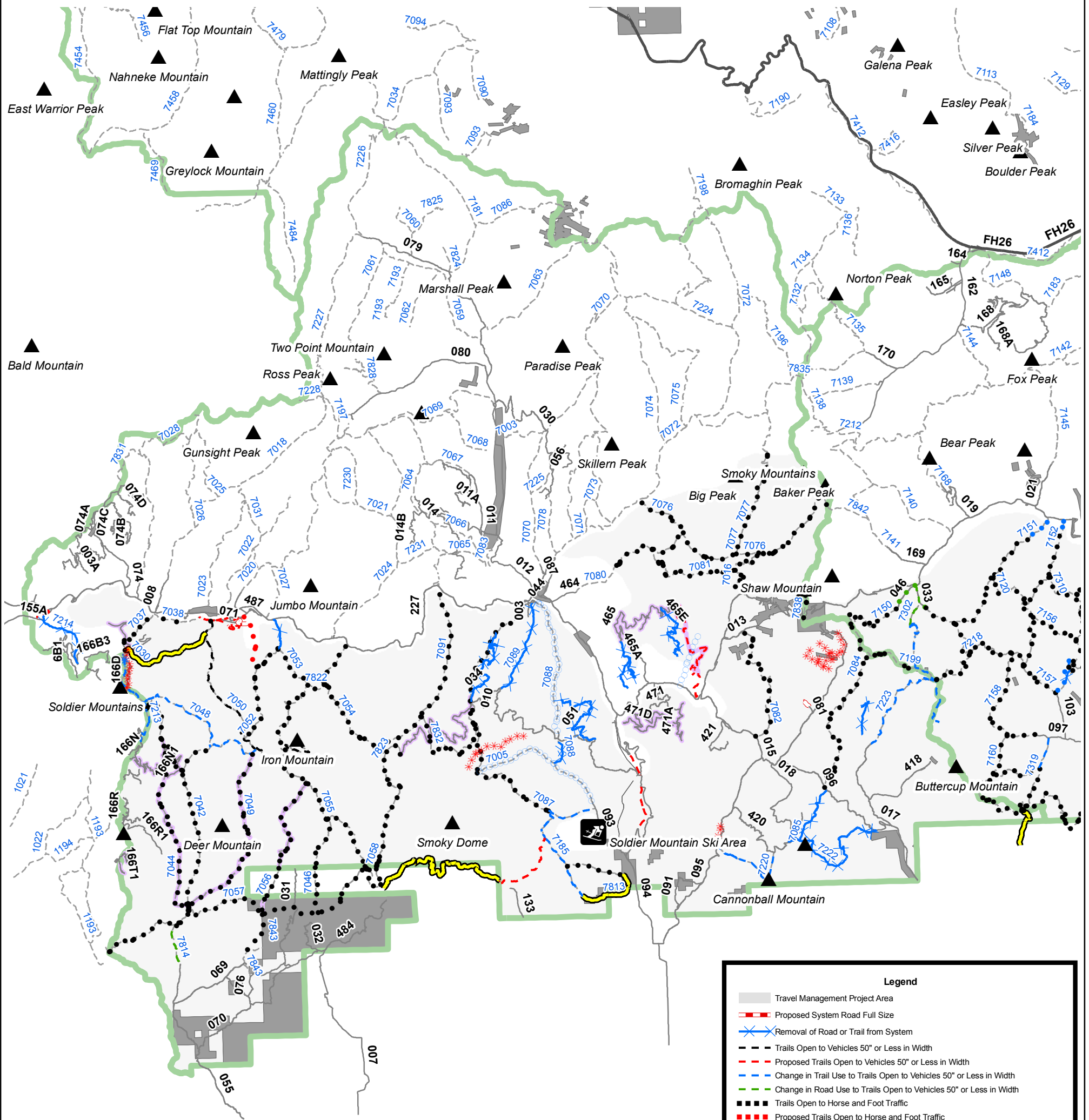


**Travel Management
Alternative 4
Fairfield District
Sawtooth National Forest**



Legend

- Travel Management Project Area
- Proposed System Road Full Size
- Removal of Road or Trail from System
- Trails Open to Vehicles 50" or Less in Width
- Proposed Trails Open to Vehicles 50" or Less in Width
- Change in Trail Use to Trails Open to Vehicles 50" or Less in Width
- Change in Road Use to Trails Open to Vehicles 50" or Less in Width
- Trails Open to Horse and Foot Traffic
- Proposed Trails Open to Horse and Foot Traffic
- Change in Trail Use to Trails Open to Horse and Foot Traffic
- Change in Road Use to Trails Open to Horse and Foot Traffic
- Trails Open to Bike, Horse, and Foot Traffic
- Proposed Trails Open to Bike, Horse, and Foot Traffic
- Change in Trail Use to Trails Open to Bike, Horse, and Foot Traffic
- Change in Road Use to Trails Open to Bike, Horse, and Foot Traffic
- Trails Open to Motorcycle, Bike, Horse, and Foot Traffic
- Proposed Trails Open to Motorcycle, Bike, Horse, and Foot Traffic
- Change in Trail Use to Trails Open to Motorcycle, Bike, Horse, and Foot Traffic
- Change in Road Use to Trails Open to Motorcycle, Bike, Horse, and Foot Traffic
- Trails Open to All Vehicles
- Proposed Trails Open to All Vehicles
- Change in Trail Use to Trails Open to All Vehicles
- Change in Road Use to Trails Open to All Vehicles
- Route Identified for Future Planning
- Seasonal Closures
- Forest Highways
- System Trails - Labeled in Blue
- NFS lands
- Non-NFS lands
- Peak
- Ski Area
- System Roads - Oper Maint Levels 2-5 - Labeled in Black

