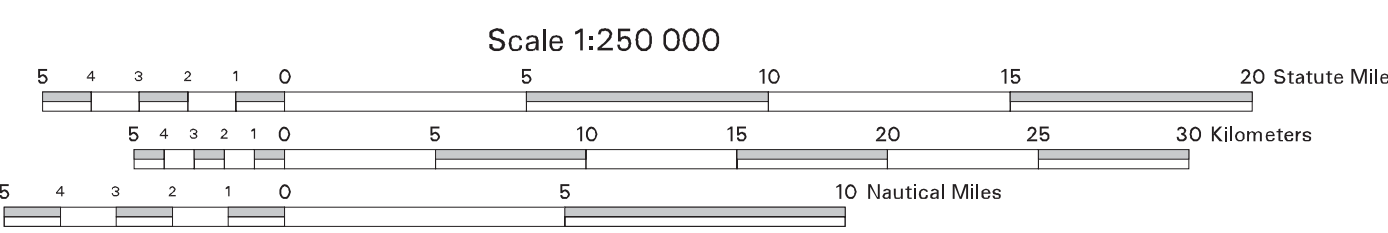


The boundaries of the regular blocks are 4,800 international meters on a side and contain 2,304 hectares. The regular boundaries are defined in terms of X and Y coordinates of the Universal Transverse Mercator Grid System based on the Geodetic Reference System (GRS) 1980 Ellipsoid.

Copies of these diagrams and other information may be obtained at the appropriate MMS OCS Region.

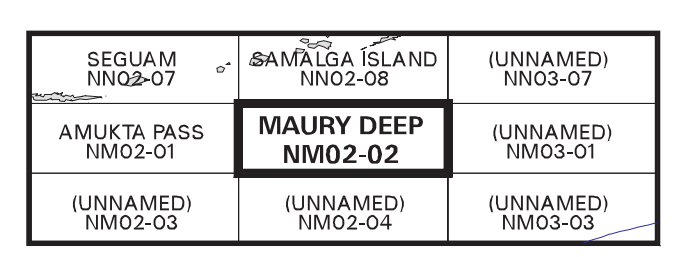
Areas and dimensions of the irregular blocks along the zone boundary are as indicated.

UNITED STATES DEPARTMENT OF THE INTERIOR
MINERALS MANAGEMENT SERVICE
OUTER CONTINENTAL SHELF OFFICIAL PROTRACTOR DIAGRAM



NORTH AMERICAN DATUM OF 1983
(WORLD GEODETIC SYSTEM OF 1984)

LOCATION DIAGRAM



This diagram is prepared in accordance with 30 CFR 256.8

For the Director
Selma Hammel
Chief, Leasing Division, Mapping and Boundary Branch
Denver, Colorado
Date 03-JUN-2003