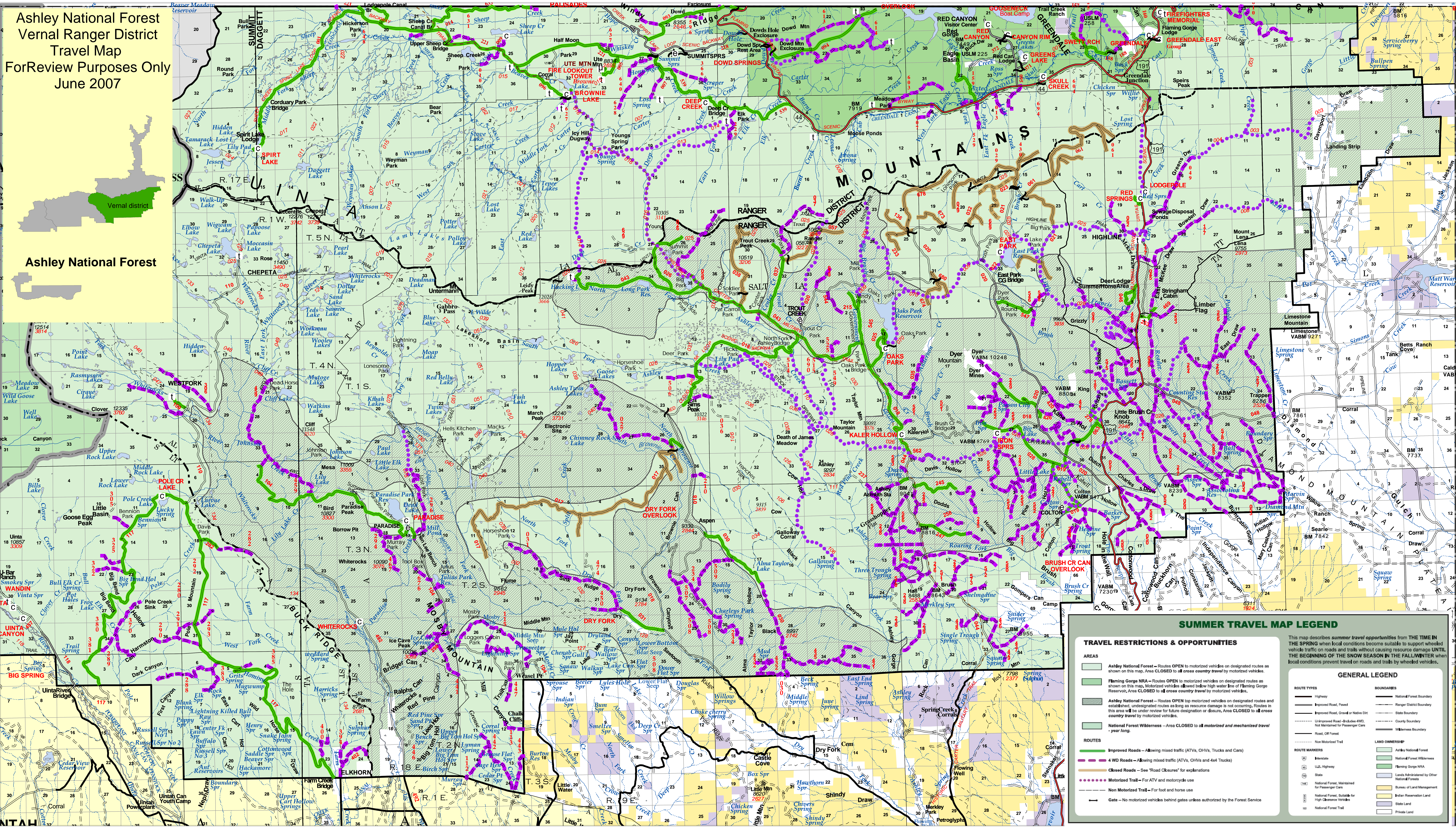


Ashley National Forest
 Vernal Ranger District
 Travel Map
 For Review Purposes Only
 June 2007



SUMMER TRAVEL MAP LEGEND

This map describes *summer travel opportunities from the time in the spring* when local conditions become suitable to support wheeled vehicle traffic on roads and trails without causing resource damage *UNTIL THE BEGINNING OF THE SNOW SEASON IN THE FALL/WINTER* when local conditions prevent travel on roads and trails by wheeled vehicles.

TRAVEL RESTRICTIONS & OPPORTUNITIES		GENERAL LEGEND	
AREAS	<ul style="list-style-type: none"> Ashley National Forest - Routes OPEN to motorized vehicles on designated routes as shown on this map. Area CLOSED to all cross country travel by motorized vehicles. Flaming Gorge NRA - Routes OPEN to motorized vehicles on designated routes as shown on this map. Motorized vehicles allowed below high water line of Flaming Gorge Reservoir. Area CLOSED to all cross country travel by motorized vehicles. Ashley National Forest - Routes OPEN to motorized vehicles on designated routes and established, undesignated routes as long as resource damage is not occurring. Routes in this area will be under review for future designation or closure. Area CLOSED to all cross country travel by motorized vehicles. National Forest Wilderness - Area CLOSED to all motorized and mechanized travel - year long. 	BOUNDARIES	<ul style="list-style-type: none"> National Forest Boundary Ranger District Boundary State Boundary County Boundary Wilderness Boundary
ROUTES	<ul style="list-style-type: none"> Improved Roads - Allowing mixed traffic (ATVs, OHVs, Trucks and Cars) 4 WD Roads - Allowing mixed traffic (ATVs, OHVs and 4x4 Trucks) Closed Roads - See "Road Closures" for explanations Motorized Trail - For ATV and motorcycle use Non Motorized Trail - For foot and horse use Gate - No motorized vehicles behind gates unless authorized by the Forest Service 	LAND OWNERSHIP	<ul style="list-style-type: none"> Ashley National Forest National Forest Wilderness Flaming Gorge NRA Land Administered by Other National Forests Bureau of Land Management Indian Reservation Land State Land Private Land
ROUTE MARKERS	<ul style="list-style-type: none"> Interstate U.S. Highway State National Forest, Maintained for Passenger Cars National Forest, Suitable for High Clearance Vehicles National Forest Trail 	LAND OWNERSHIP	