

**Preliminary  
Waterborne Commerce Statistics**

**For Calendar Year 2007**

**Waterborne Commerce National Totals  
And  
Selected Inland Waterways  
For Multiple Years**

**Institute for Water Resources  
Navigation Data Center**

**U.S. Army Corps of Engineers**

**Waterborne Commerce Statistics Center  
November 5, 2008**

## Introduction

In order to provide waterborne commerce information as soon as possible, the Waterborne Commerce Statistics Center (WCSC) has prepared this summary document of preliminary waterborne commerce statistics for calendar year 2007. The foreign inbound and outbound data is preliminary import, export, and inbound/outbound in-transit data. The domestic national totals are based on calendar year 2007 data collected from vessel operating companies. Both the foreign and domestic data are subject to correction and may differ slightly from the final figures to be released later.

All graphs and tables (except page 1) show domestic tonnages (short tons). All graphs after page 1 include all internal tonnage, which is tonnage moving exclusively on waterways within the boundaries of the United States. The deep-draft sections of the Mississippi, the Columbia and the Gulf Intracoastal Waterway include domestic coastwise data as well. This coastwise tonnage travels on these internal waterways and also Coastwise (the oceans or the Gulf of Mexico). All the data for the current year (2007) is preliminary. The data of prior years are the final figures. Also, please note that rounding may result in commodity tonnages that do not add up to the totals for a waterway.

WCSC is also using the Internet to expedite release of statistics. Please visit our World Wide Web home page at:

[www.iwr.usace.army.mil/ndc/wcsc/wcsc.htm](http://www.iwr.usace.army.mil/ndc/wcsc/wcsc.htm).

There you will find the timeliest WCSC statistics including this report, quarterly estimates and our monthly internal traffic indicators.

Questions or comments may be communicated to:

Waterborne Commerce Statistics Center, USACE  
P. O. Box 61280  
New Orleans, LA 70161-1280  
Telephone: (504) 862-1404  
(504) 862-1441  
Fax No.: (504) 862-1423  
E-Mail: CEIWR-NDCWCSC.WEBMASTER@usace.army.mil

## Table of Contents

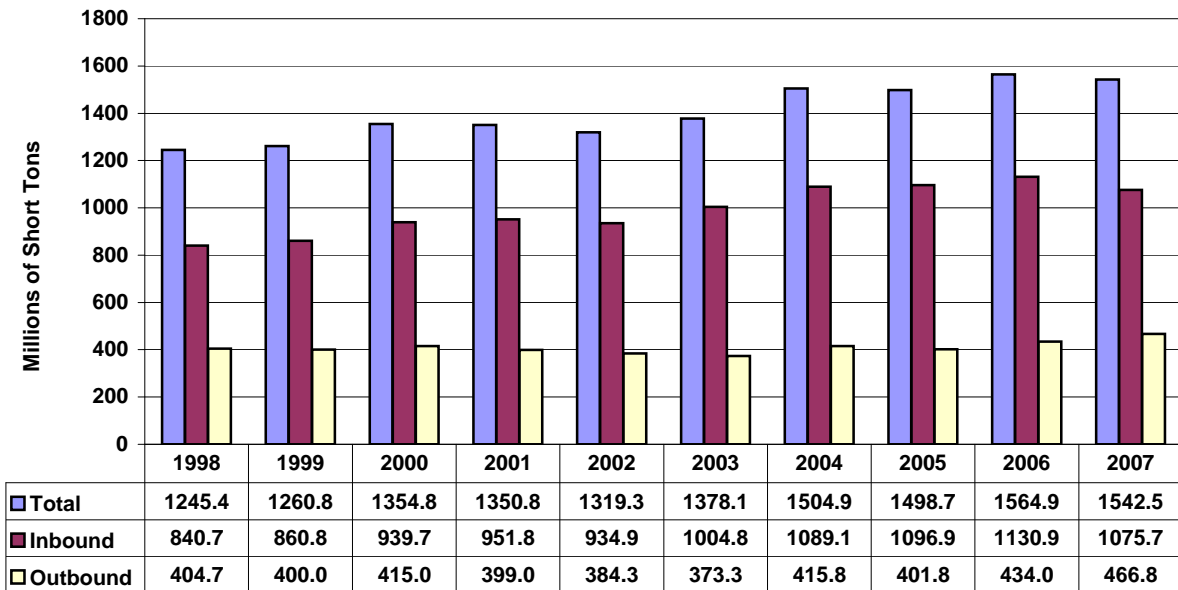
Table/Graph	Page
Introduction	i
Table of Contents	ii
Explanation of Commodity Groups	iii
Foreign Waterborne Inbound and Outbound Traffic (1998-2007)	1
Domestic Waterborne Commerce of the U.S. – By Type Traffic (1998-2007)	1
Internal Waterways Tonnage Comparisons: 2007 vs 2006	2
Internal Waterways Tonnage Comparisons: Graph of Percent Change	3
National Internal Commodities	4
Total of Selected Waterways (1998-2007)	5
Allegheny River	6
Atchafalaya River	8
Atlantic Intracoastal Waterway	10
Big Sandy River	12
Black Warrior and Tombigbee Rivers	14
Columbia River	16
Cumberland River	18
Gulf Intracoastal Waterway	20
Illinois Waterway	22
Kanawha River	24
McClellan-Kerr Waterway	26
Mississippi River	28
Missouri River	30
Monongahela River	32
Ohio River	34
Snake River	36
Tennessee River	38
Tennessee-Tombigbee Waterway	40

## Explanation of Commodity Groups

Coal:	Coal, lignite, and coke
Petro & Petro Products:	Petroleum and Petroleum Products
Chemicals:	Chemicals and fertilizers
Crude Materials:	Crude materials, inedible, such as: forest products, pulp, sand, gravel, stone, iron ore, marine shells, non-ferrous metallic ores, and sulphur
Manufactured Goods:	Primary manufactured goods, such as: paper and allied products, concrete, iron, steel, non-ferrous metals, and wood products
Food and Farm:	Food, grain, and farm products
Manufactured Equipment:	All manufactured equipment
Waste material:	Waste material, such as: garbage, landfill, sewage sludge, and waste water.
Other:	Commodity group not specifically listed in a table. (This will differ from table to table).

## Foreign Waterborne Inbound and Outbound Traffic

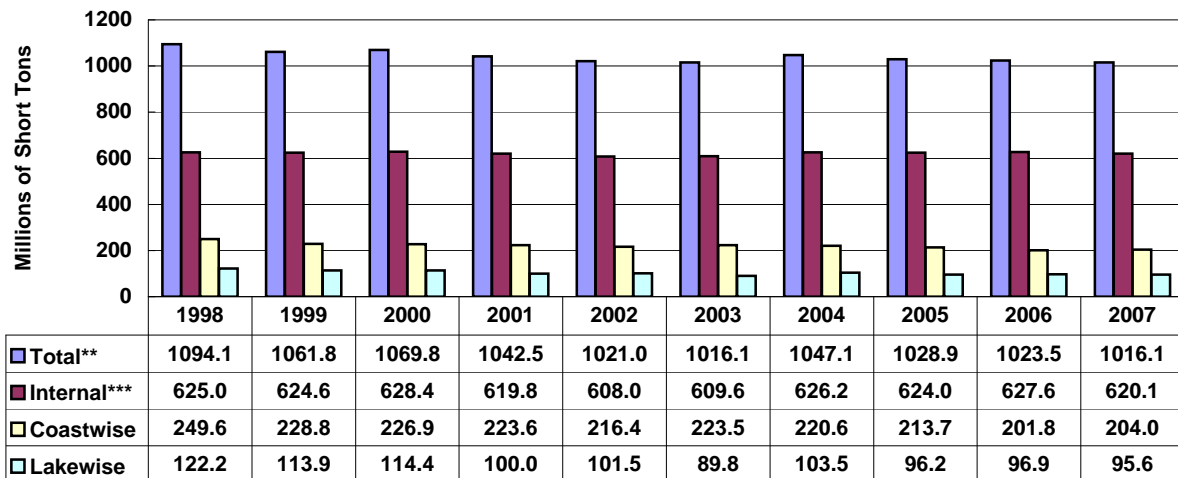
1998-2007\*, Millions of Short Tons



\*Preliminary as of November 5, 2008.

## Domestic Waterborne Commerce of the U.S.

1998-2007\*, Millions of Short Tons, by Type of Traffic



\*Preliminary as of November 5, 2008.

\*\*Total also includes Intraport and Intra-territory traffic.

\*\*\*Total Internal excludes waterway improvement materials, and beginning in 1996, excludes fish.

## Domestic U.S. Waterborne Traffic

Annual Tonnage Comparisons: 2007\* VS 2006

Millions of Short Tons

	CY06	CY07*	Percent Change
<b>National Totals**</b>			
Domestic	1023.5	1016.1	-0.72%
Lakewise	96.9	95.6	-1.28%
Coastwise	201.8	204.0	1.06%
Intraport	91.4	91.2	-0.15%
Intra-territory	5.8	5.1	-11.67%
Internal	627.6	620.1	-1.20%

### National Internal Commodities

Coal	183.2	182.1	-0.61%
Petroleum	159.5	164.7	3.24%
Chemicals	48.9	51.0	4.13%
Crude Materials	120.4	107.9	-10.41%
Manufactured Goods	30.9	27.0	-12.58%
Food and Farm	73.6	77.5	5.28%
Manufactured Equipment	9.5	8.8	-8.30%
Other	1.4	1.2	-17.47%

### Waterways

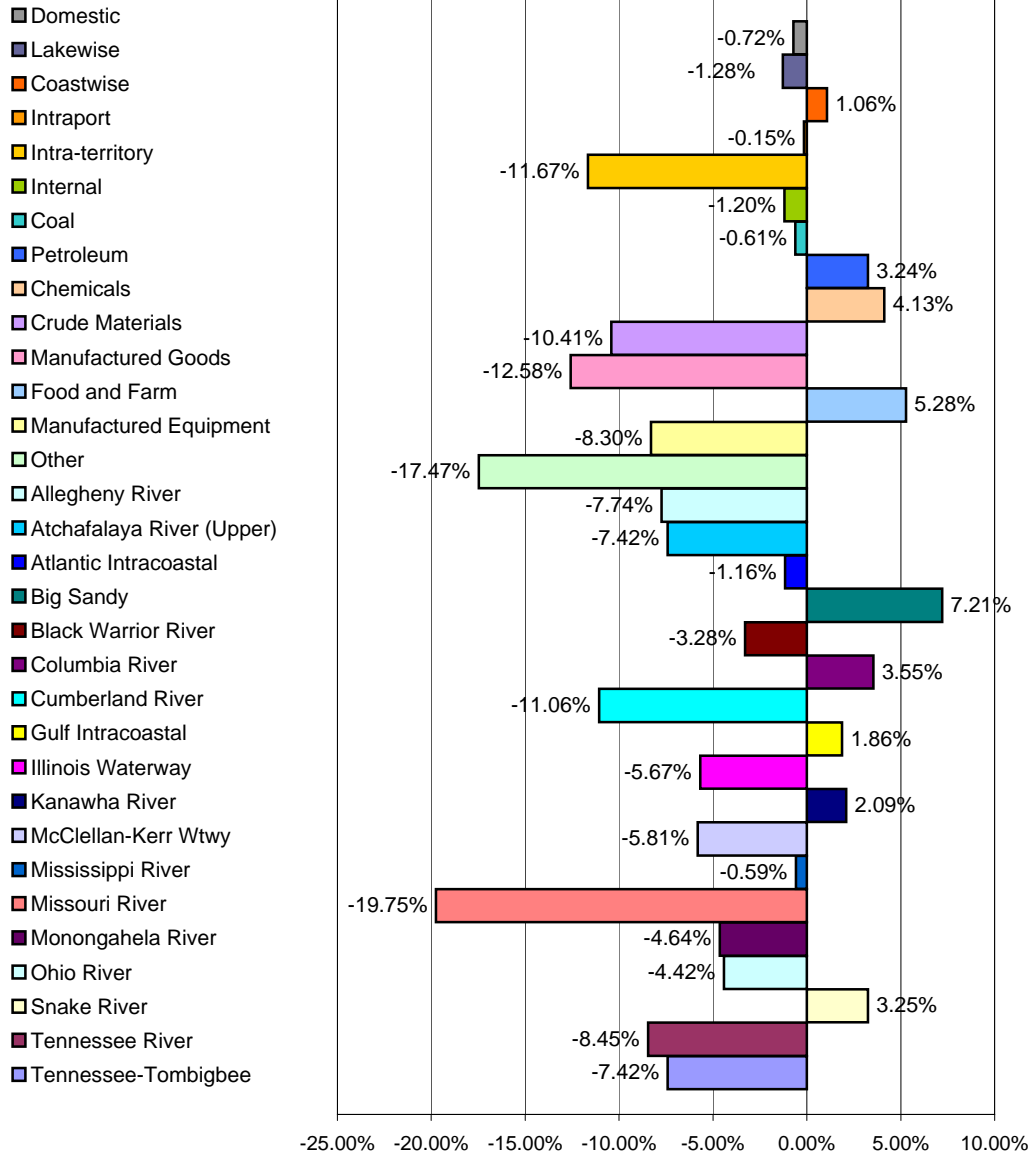
Allegheny River	2.9	2.7	-7.74%
Atchafalaya River (Upper)	11.7	10.8	-7.42%
Atlantic Intracoastal	2.5	2.5	-1.16%
Big Sandy	20.4	21.8	7.21%
Black Warrior River	21.6	20.9	-3.28%
Columbia River***	17.9	18.5	3.55%
Cumberland River	25.3	22.5	-11.06%
Gulf Intracoastal***	122.6	124.9	1.86%
Illinois Waterway	43.6	41.1	-5.67%
Kanawha River	20.6	21.0	2.09%
McClellan-Kerr Wtwy	12.8	12.1	-5.81%
Mississippi River***	313.5	311.7	-0.59%
Missouri River	8.3	6.7	-19.75%
Monongahela River	28.0	26.7	-4.64%
Ohio River	241.5	230.9	-4.42%
Snake River	5.2	5.4	3.25%
Tennessee River	54.0	49.4	-8.45%
Tennessee Tombigbee	6.6	6.1	-7.42%

\* Preliminary as of November 5, 2008.

\*\*All National Totals exclude fish and waterway improvement materials.

\*\*\*Includes domestic coastwise tonnage.

## Domestic U.S. Waterborne Traffic Tonnage Comparisons: 2007\* vs. 2006

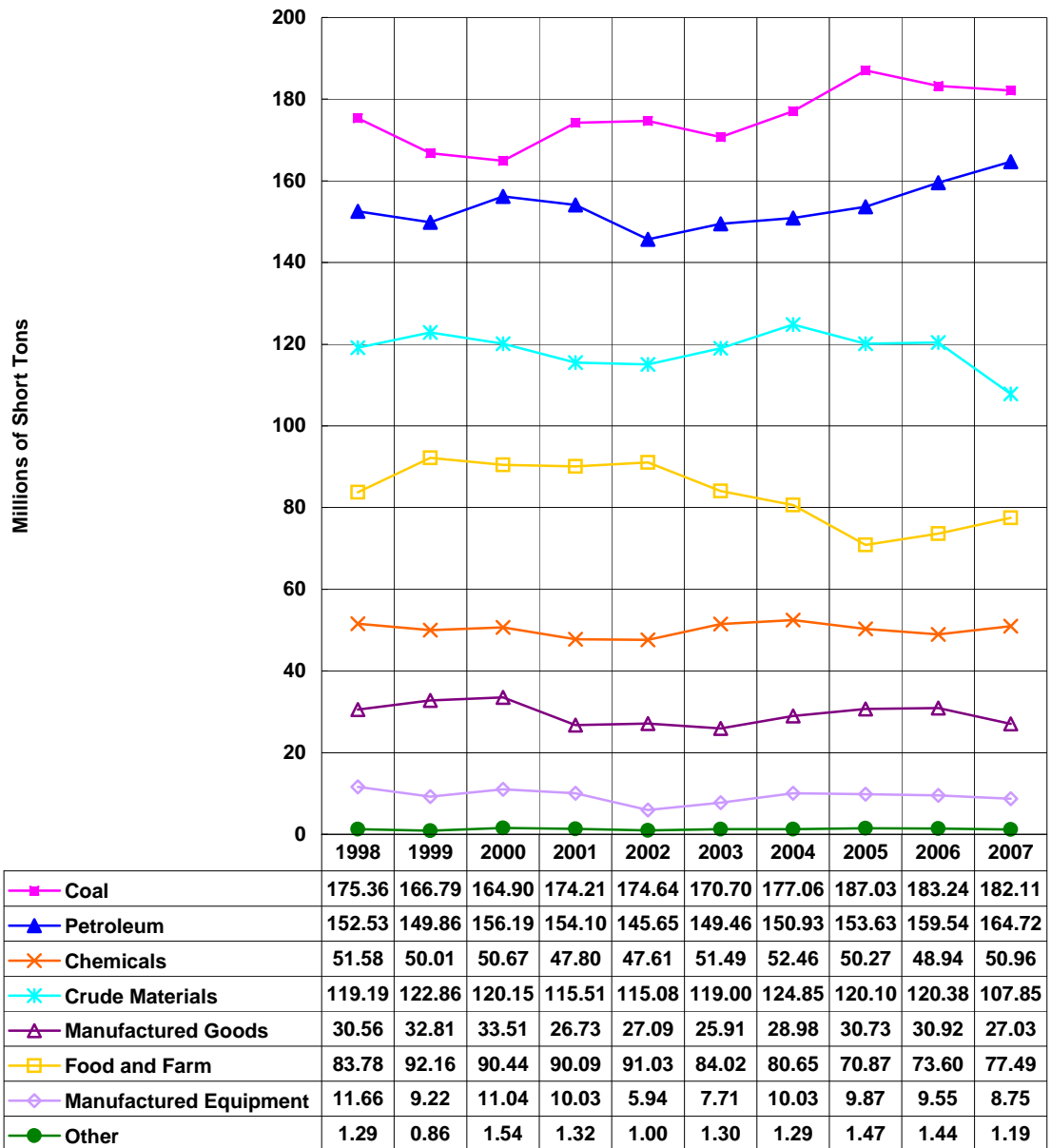


\*Preliminary as of October 5, 2008.

Waterway improvement materials and fish excluded from National Totals.

## National Internal Commodities

1998-2007\*, Millions of Short Tons, By Commodity

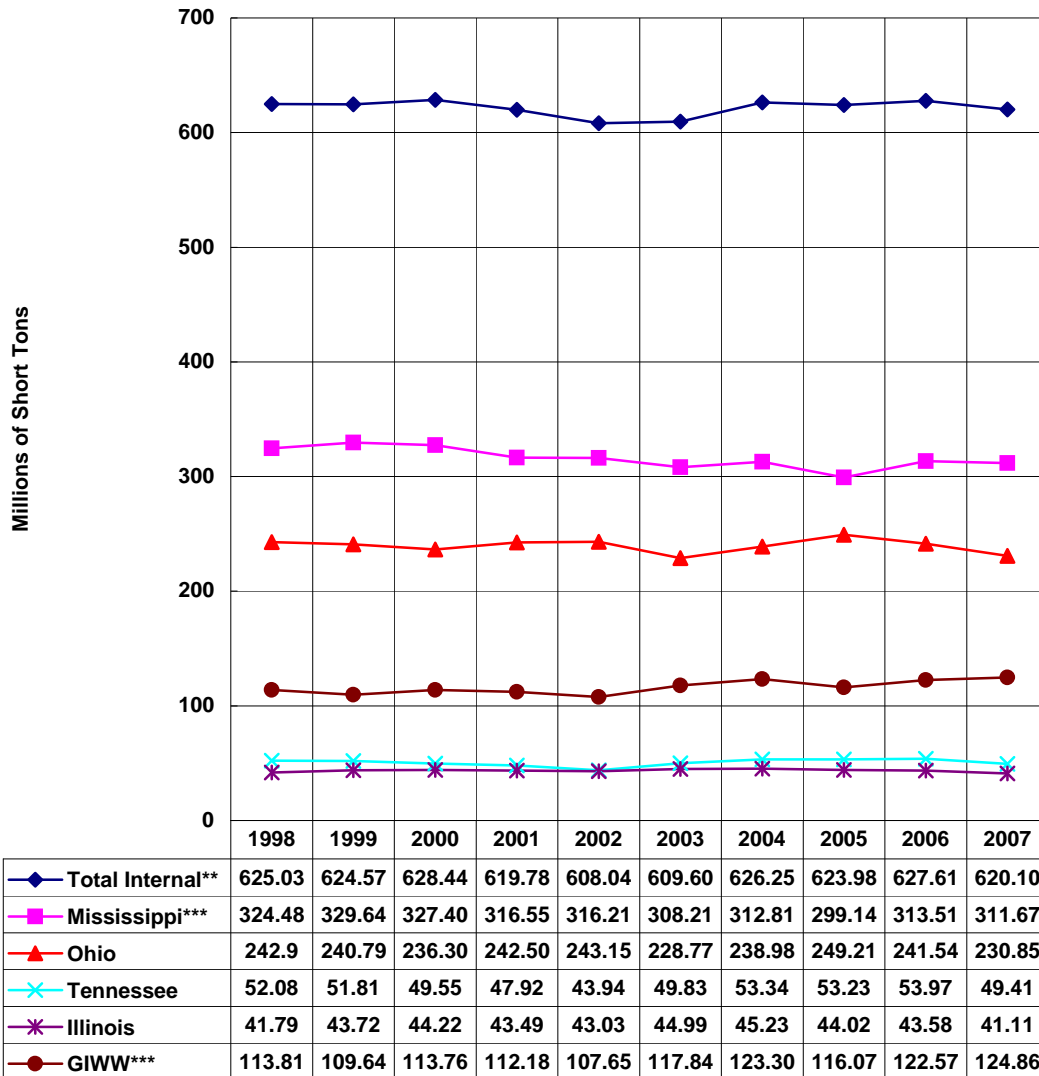


\*Preliminary as of November 5, 2008.



## Commerce on Selected Waterways

Internal Traffic, 1998-2007\*

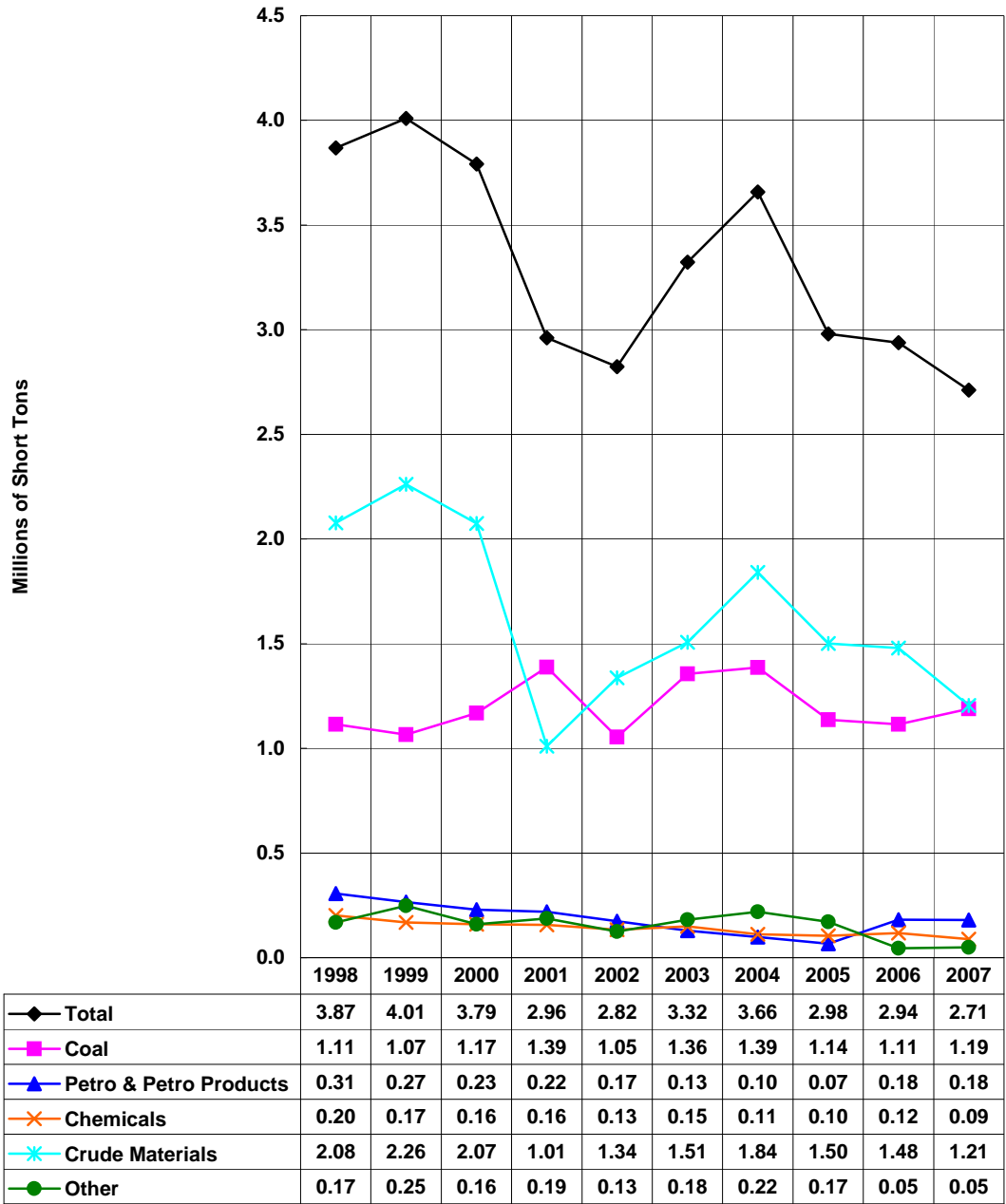


\*Preliminary as of November 5, 2008.

\*\*Total Internal excludes waterway improvement materials, and beginning in 1996, excludes fish.

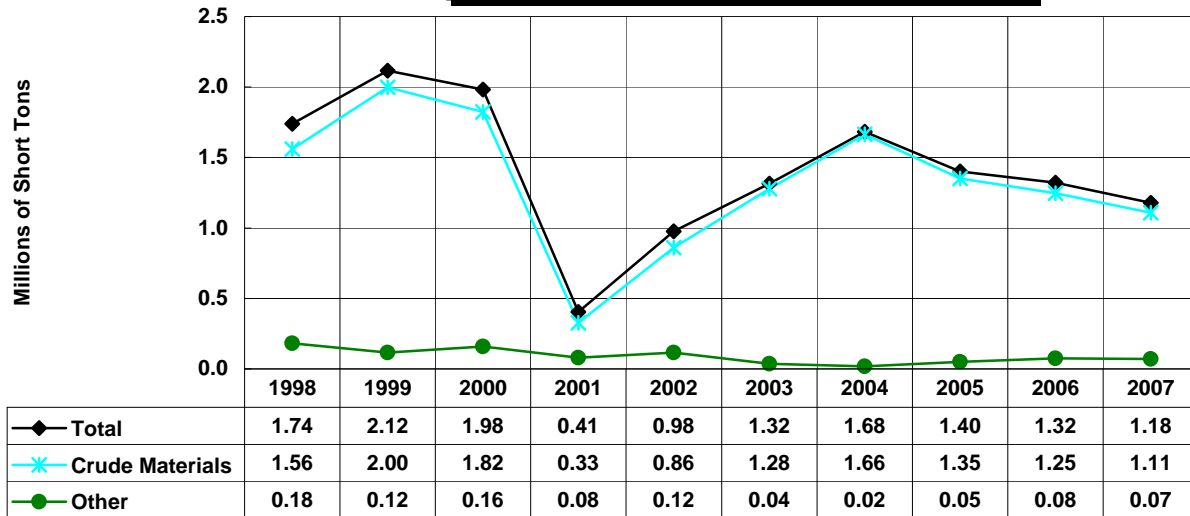
\*\*\*Includes domestic coastwise tonnage.

**Allegheny River - Totals**  
1998-2007\*, Millions of Short Tons, By Commodity



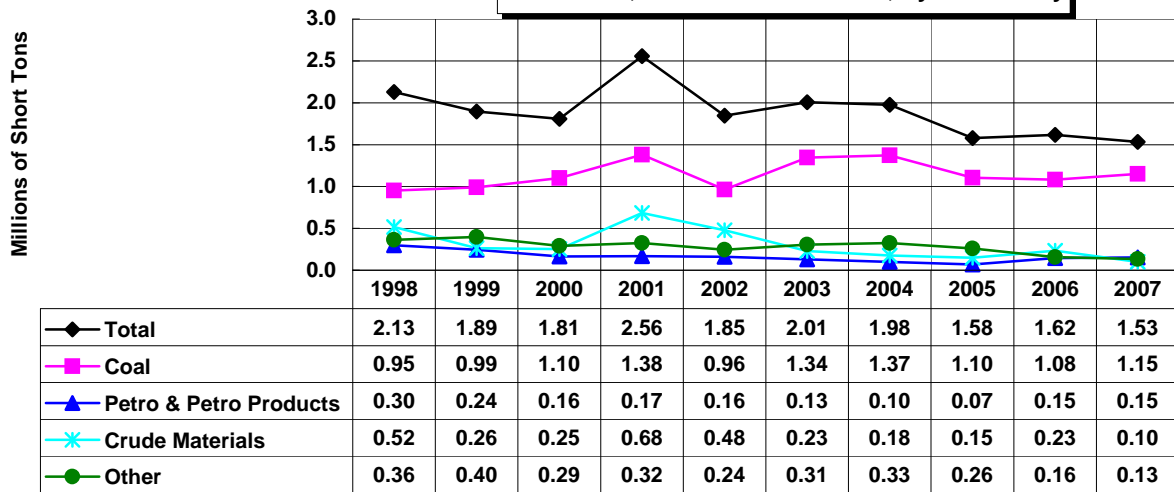
\*Preliminary as of November 5, 2008.

### Allegheny River - Downbound 1998-2007\*, Millions of Short Tons, By Commodity



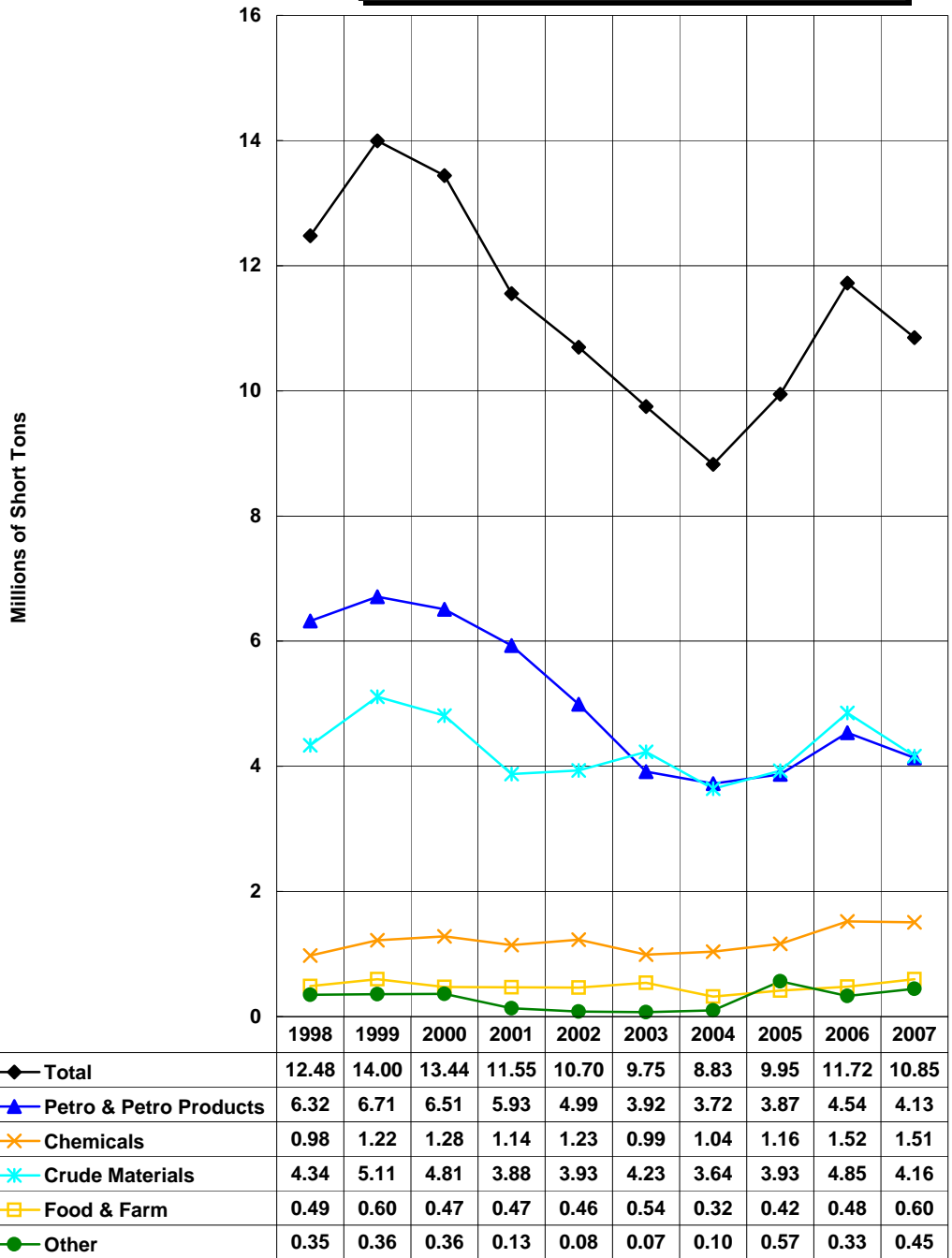
\*Preliminary as of November 5, 2008.

### Allegheny River - Upbound 1998-2007\*, Millions of Short Tons, By Commodity



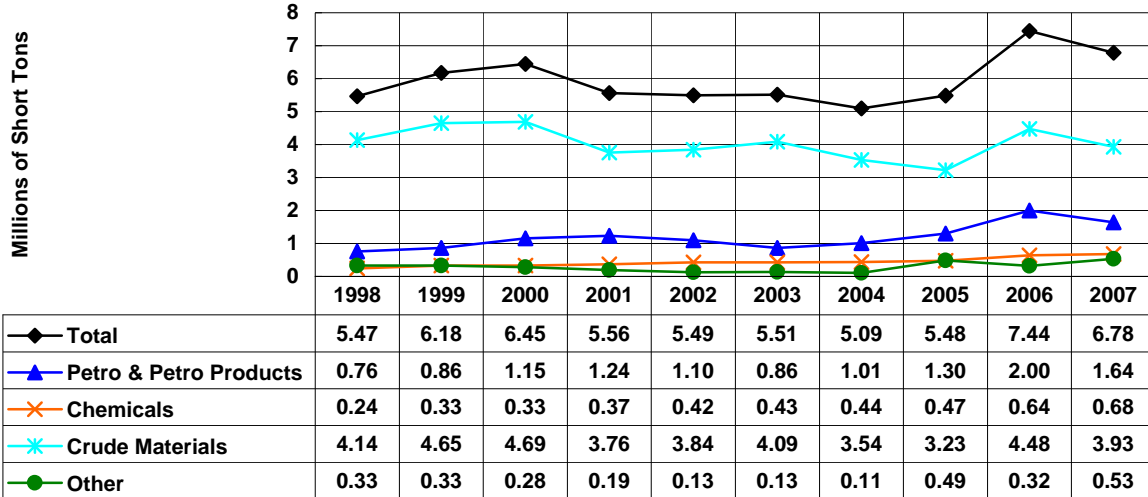
\*Preliminary as of November 5, 2008.

### Upper Atchafalaya River - Totals 1998-2007\*, Millions of Short Tons, By Commodity



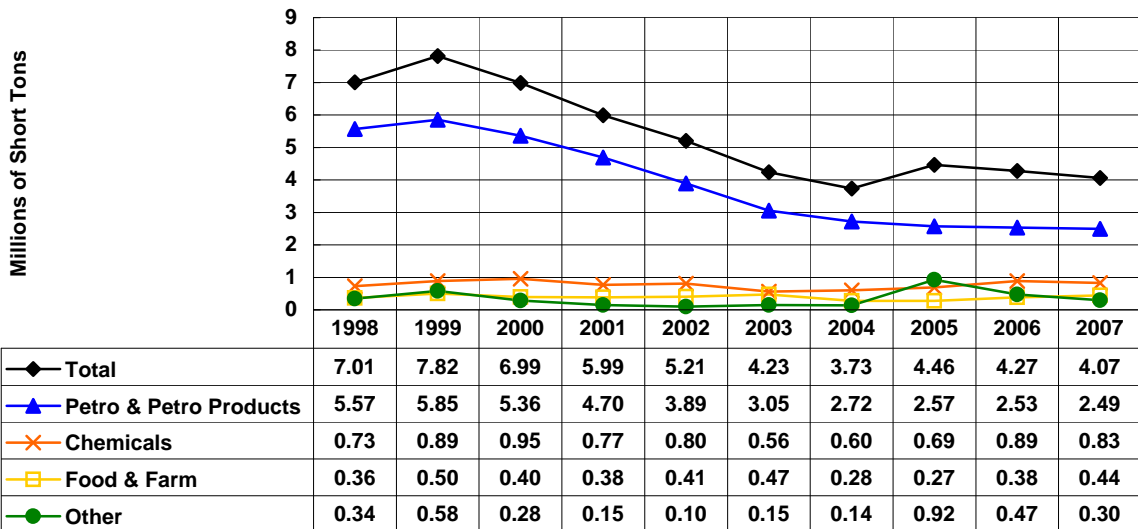
\*Preliminary as of November 5, 2008.

### Upper Atchafalaya River - Downbound 1998-2007\*, Millions of Short Tons, By Commodity



\*Preliminary as of November 5, 2008.

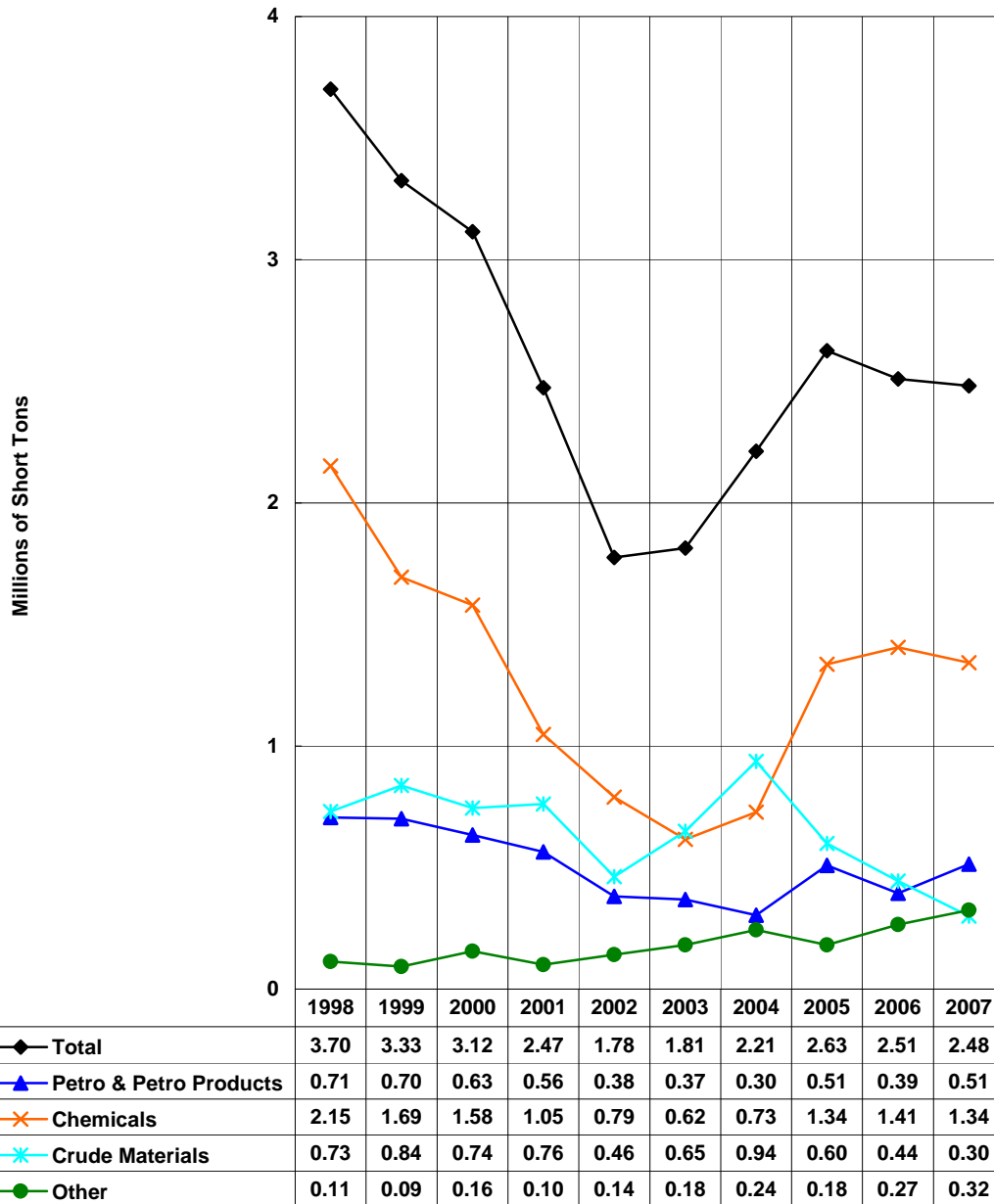
### Upper Atchafalaya River - Upbound 1998-2007\*, Millions of Short Tons, By Commodity



\*Preliminary as of November 5, 2008.

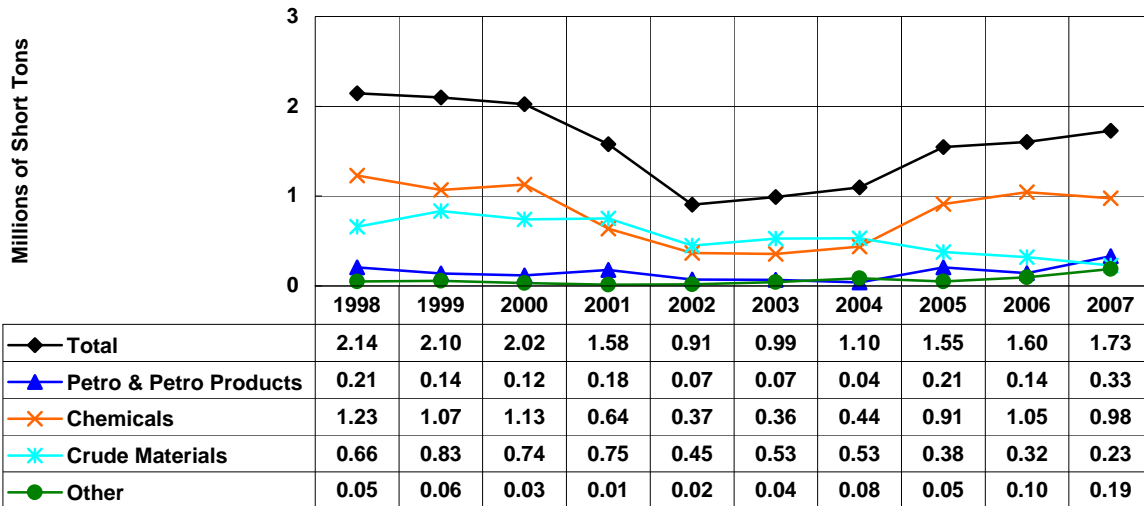
## Atlantic Intracoastal Waterway Totals

1998-2007\*, Millions of Short Tons, By Commodity



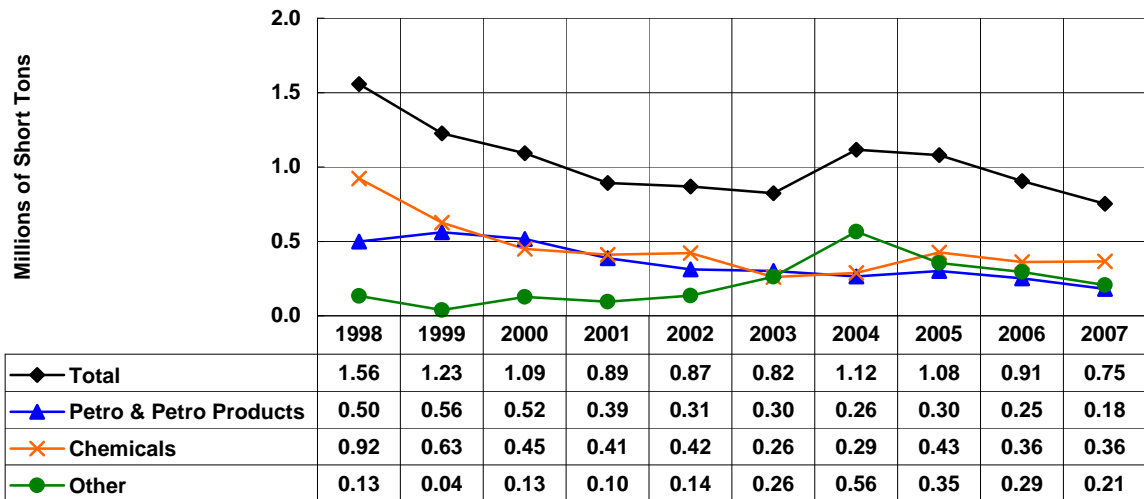
\*Preliminary as of November 5, 2008.

### Atlantic Intracoastal Waterway Southbound 1998-2007\*, Millions of Short Tons, By Commodity



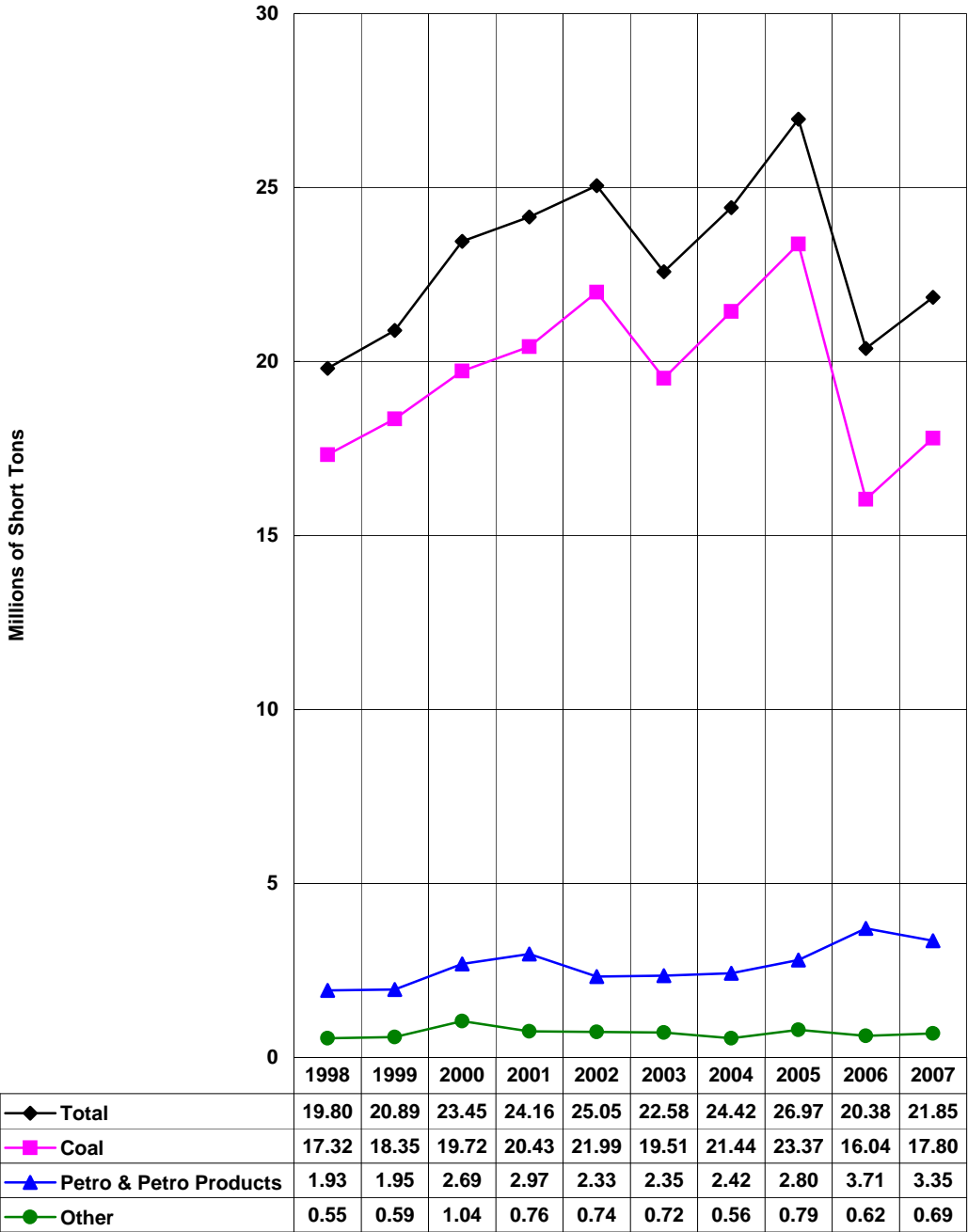
\*Preliminary as of November 5, 2008.

### Atlantic Intracoastal Waterway Northbound 1998-2007\*, Millions of Short Tons, By Commodity



\*Preliminary as of November 5, 2008.

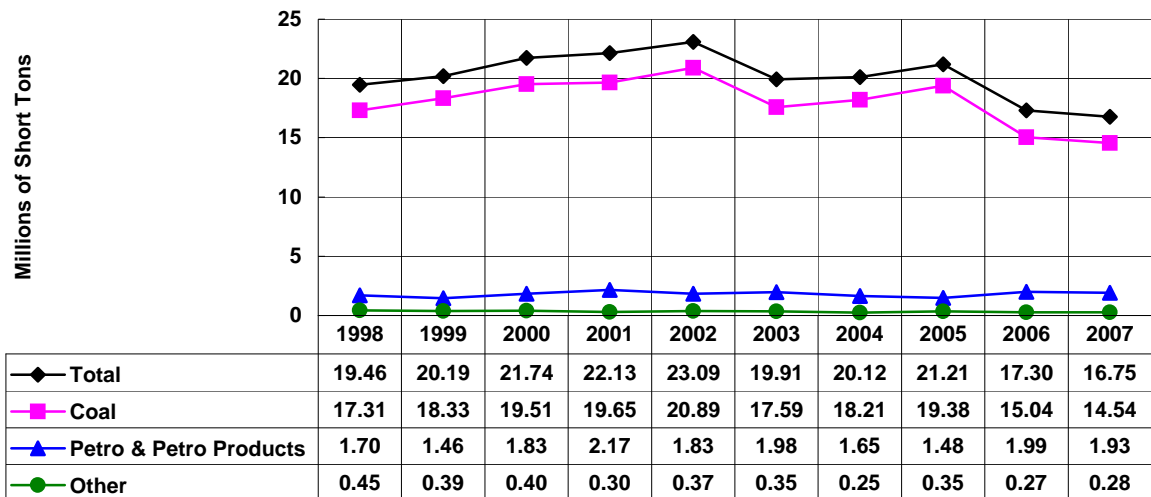
**Big Sandy River - Totals**  
1998-2007\*, Millions of Short Tons, By Commodity



\*Preliminary as of November 5, 2008.

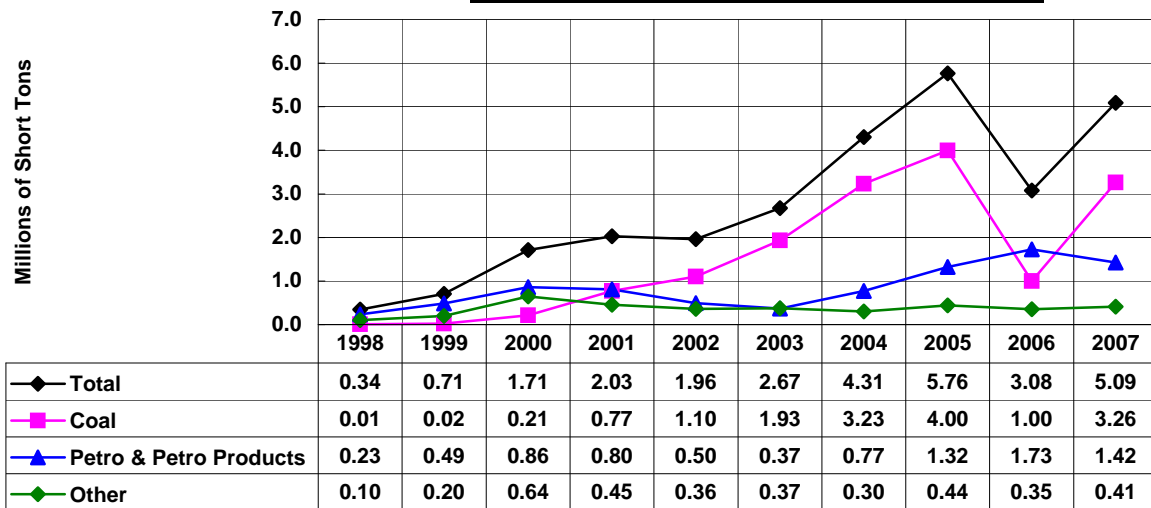


### Big Sandy River - Downbound 1998-2007\*, Millions of Short Tons, By Commodity



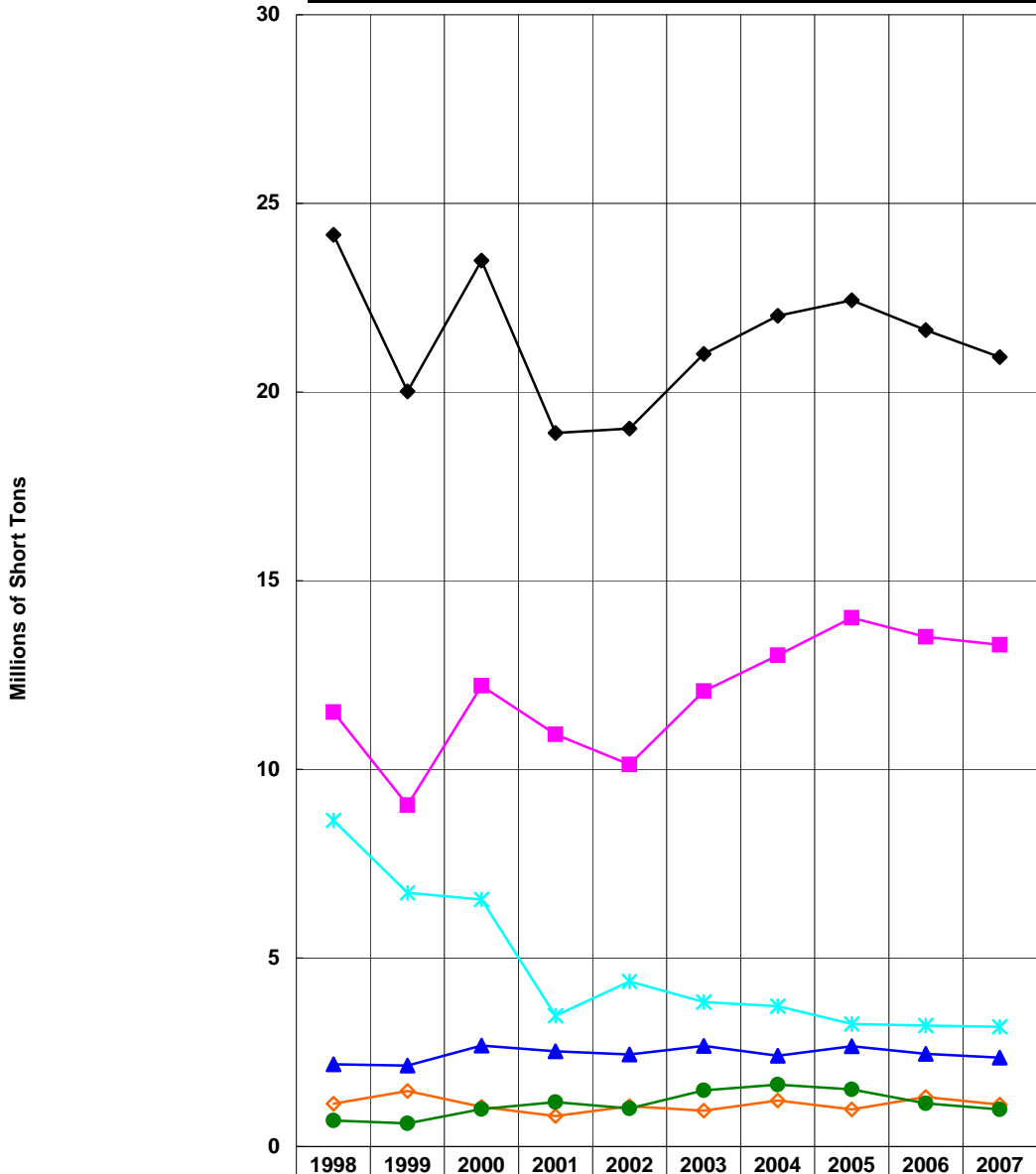
\*Preliminary as of November 5, 2008.

### Big Sandy River - Upbound 1998-2007\*, Millions of Short Tons, By Commodity



\*Preliminary as of November 5, 2008.

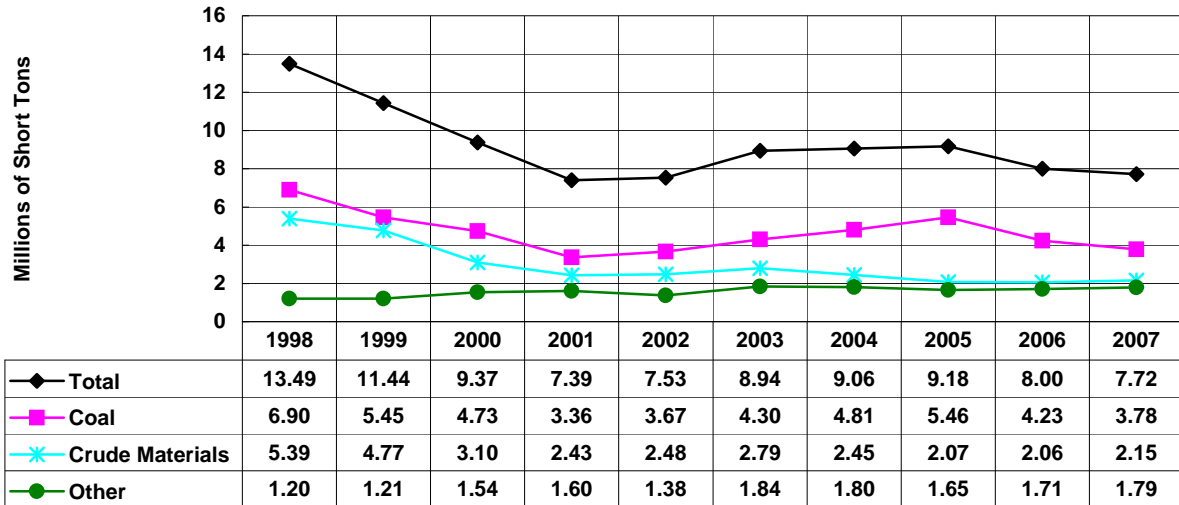
## Black Warrior & Tombigbee Rivers Totals 1998-2007\*, Millions of Short Tons, By Commodity



◆ Total	24.17	20.01	23.48	18.91	19.03	21.01	22.02	22.43	21.64	20.93
■ Coal	11.51	9.05	12.21	10.93	10.13	12.07	13.02	14.02	13.51	13.30
▲ Petro & Petro Products	2.18	2.15	2.68	2.53	2.44	2.67	2.41	2.66	2.45	2.36
* Crude Materials	8.65	6.72	6.55	3.47	4.38	3.83	3.72	3.25	3.21	3.18
◇ Manufactured Goods	1.13	1.47	1.05	0.81	1.07	0.95	1.22	0.98	1.32	1.11
● Other	0.69	0.62	1.00	1.18	1.01	1.49	1.65	1.52	1.15	0.98

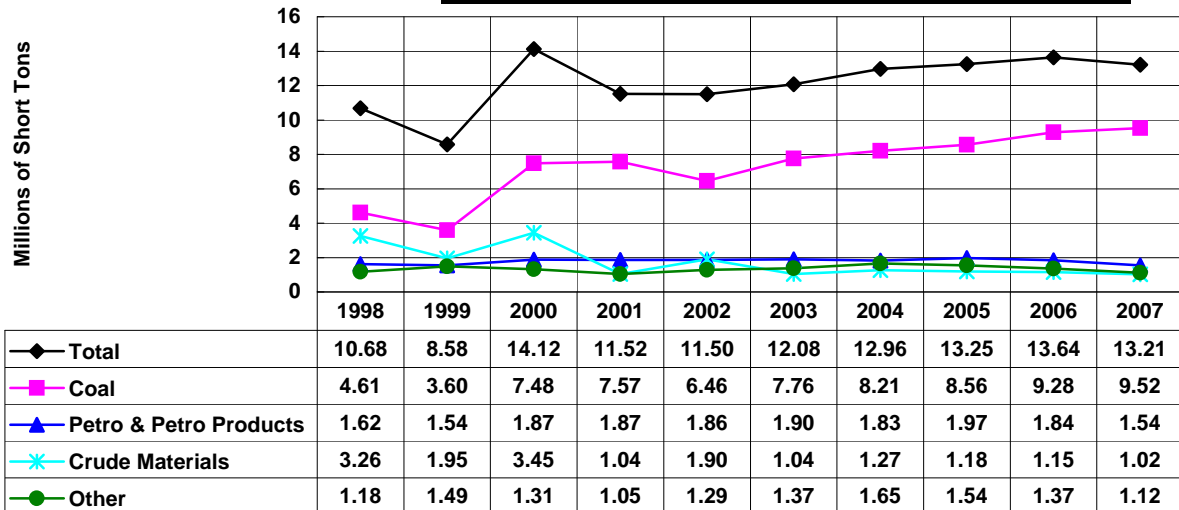
\*Preliminary as of November 5, 2008.

### Black Warrior & Tombigbee Rivers Downbound, 1998-2007\*, Millions of Short Tons, By Commodity



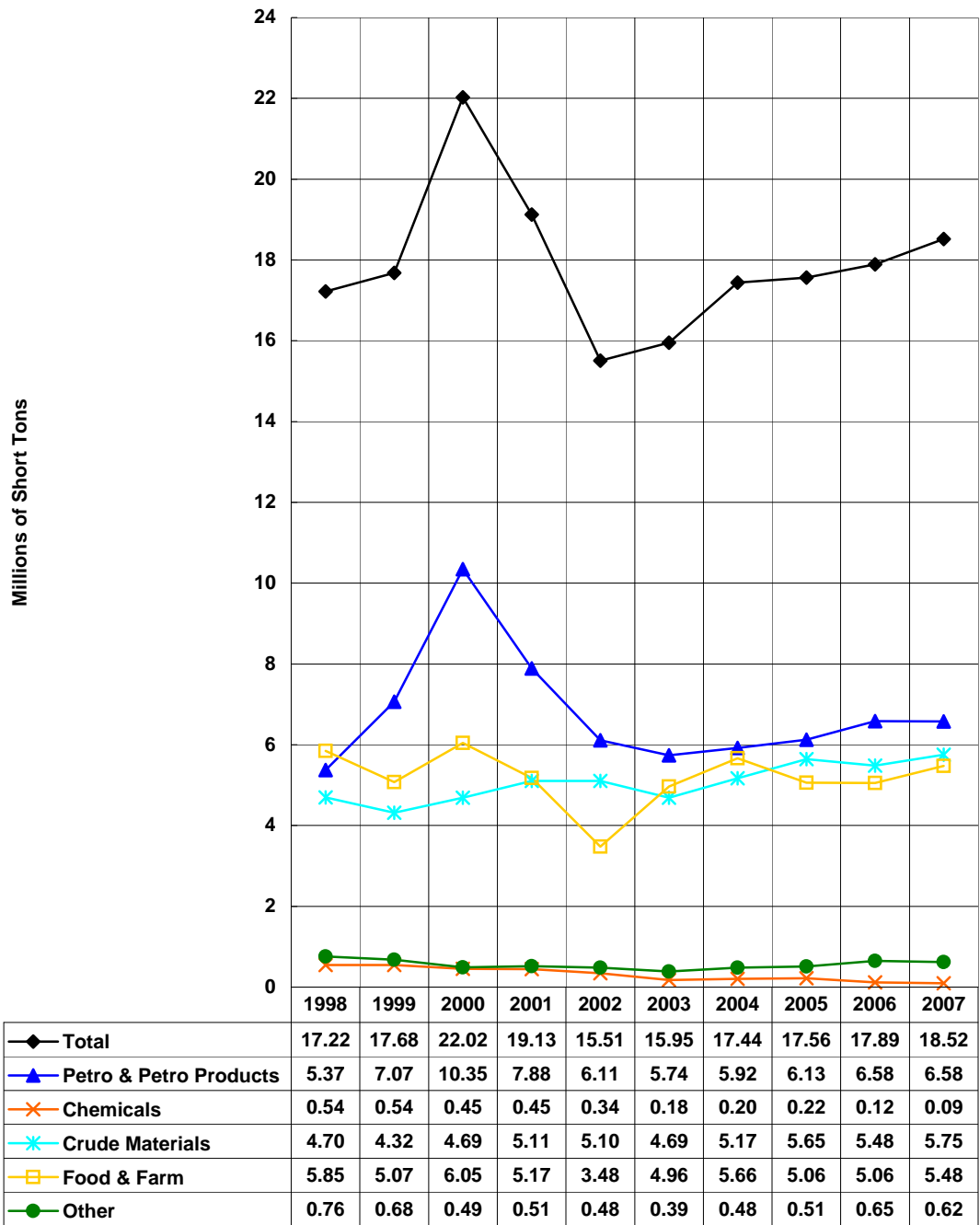
\*Preliminary as of November 5, 2008.

### Black Warrior & Tombigbee Rivers Upbound, Millions of Short Tons, 1998-2007\*, By Commodity



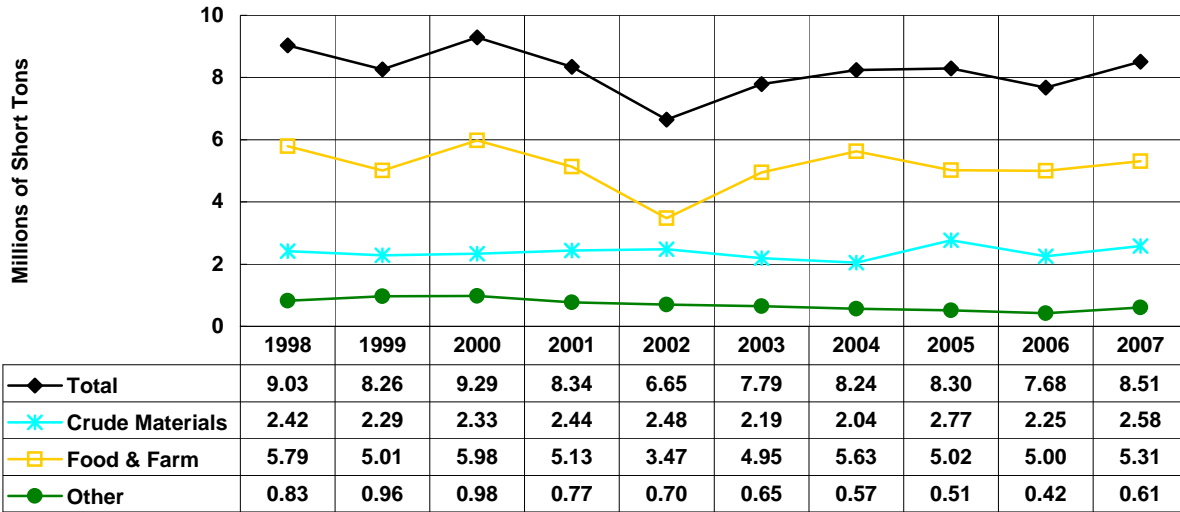
\*Preliminary as of November 5, 2008.

### Columbia River - Totals 1998-2007\*, Millions of Short Tons, By Commodity



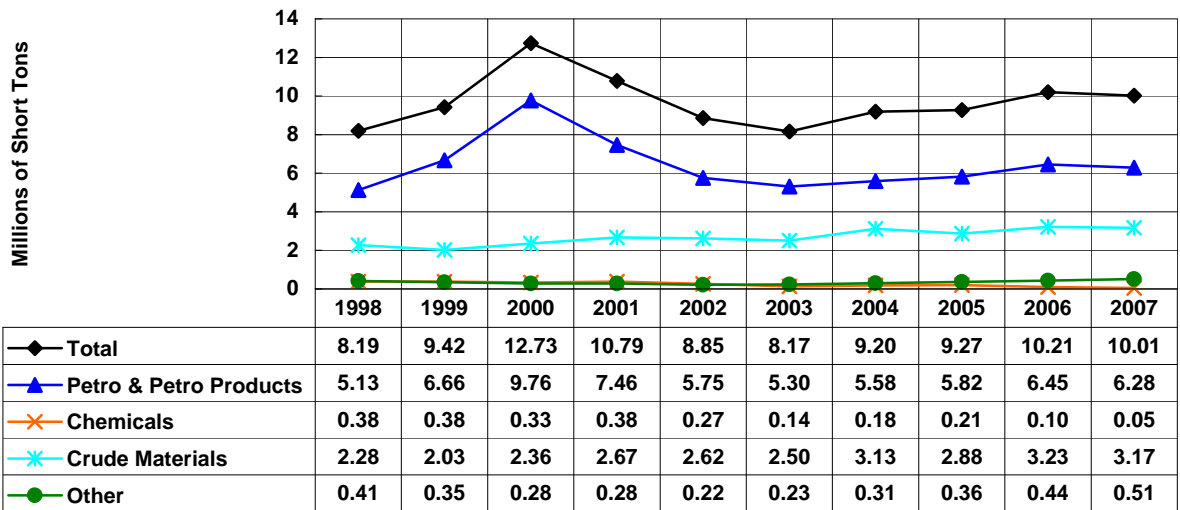
\*Preliminary as of November 5, 2008.  
Domestic tonnage only (including coastwise).

### Columbia River - Downbound 1998-2007\*, Millions of Short Tons, By Commodity



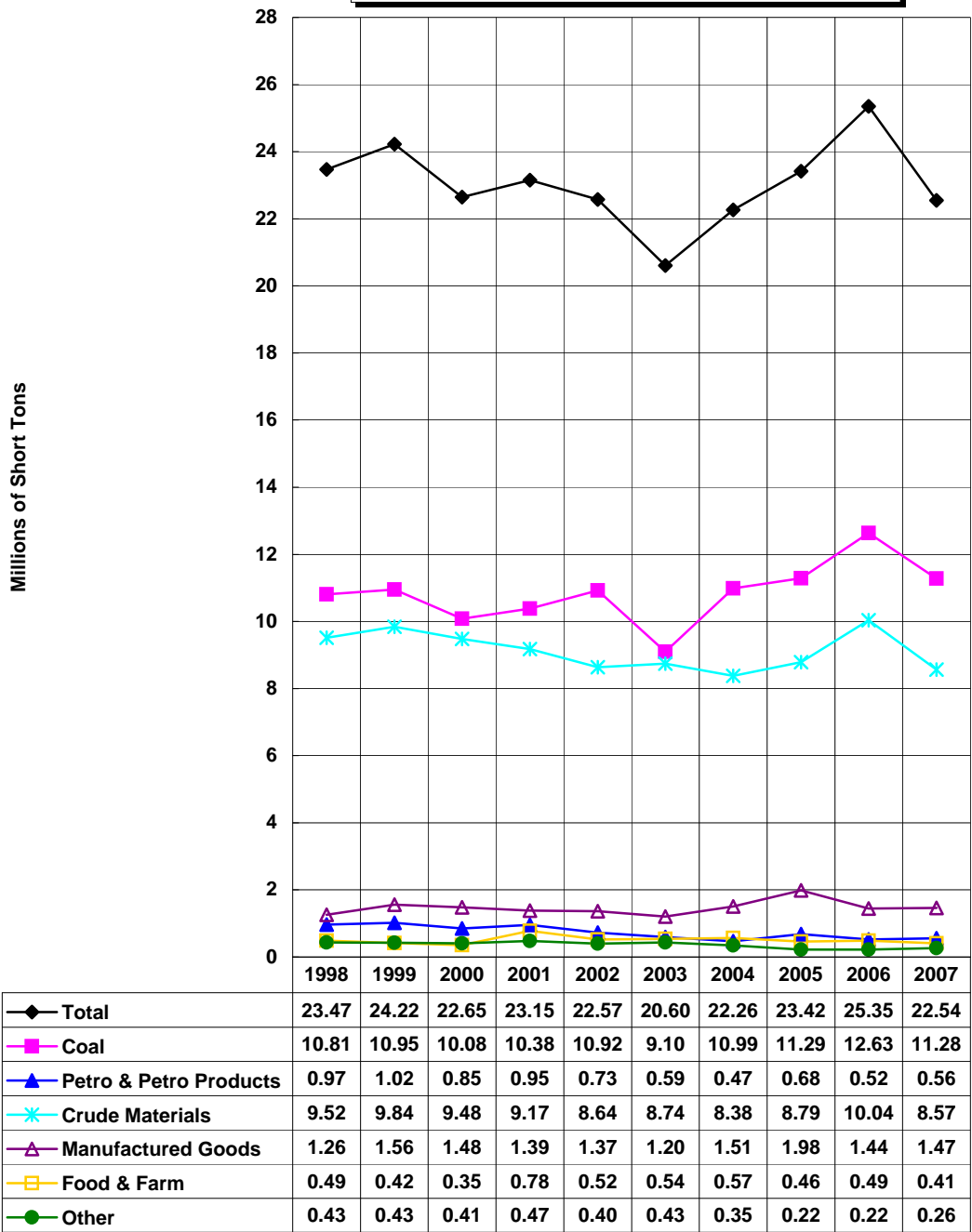
\*Preliminary as of November 5, 2008.  
Domestic tonnage only (including coastwise).

### Columbia River - Upbound 1998-2007\*, Millions of Short Tons, By Commodity



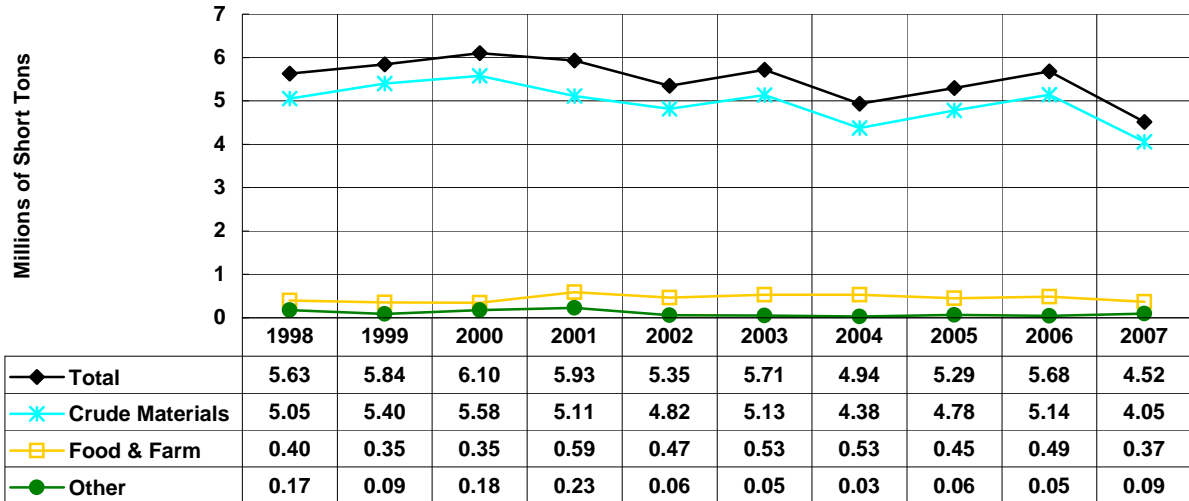
\*Preliminary as of November 5, 2008.  
Domestic tonnage only (including coastwise).

### Cumberland River - Totals 1998-2007\*, Millions of Short Tons, By Commodity



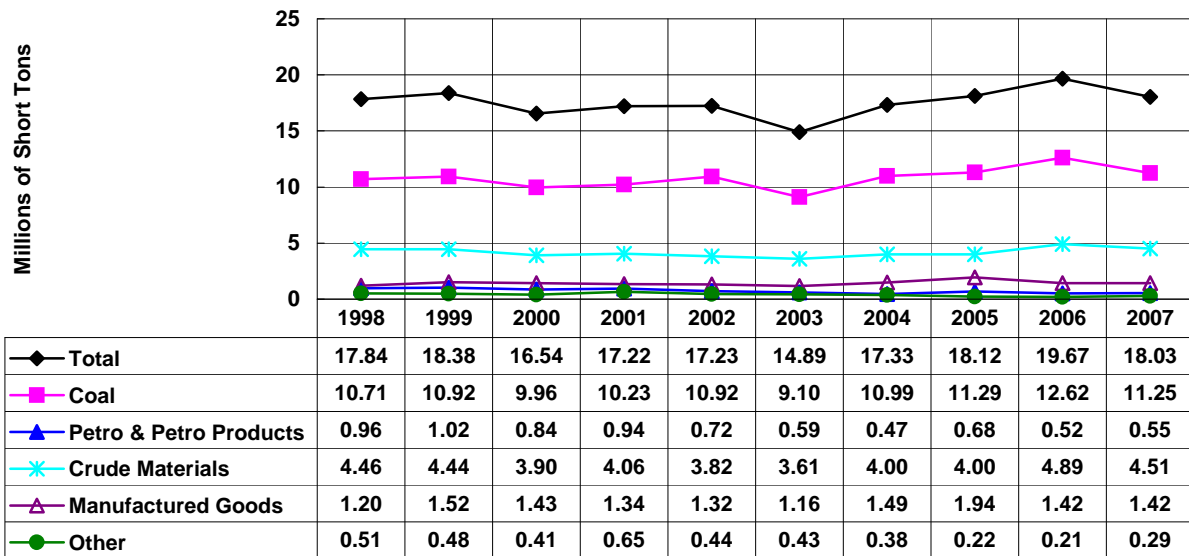
\*Preliminary as of November 5, 2008.

### Cumberland River - Downbound 1998-2007\*, Millions of Short Tons, By Commodity



\*Preliminary as of November 5, 2008.

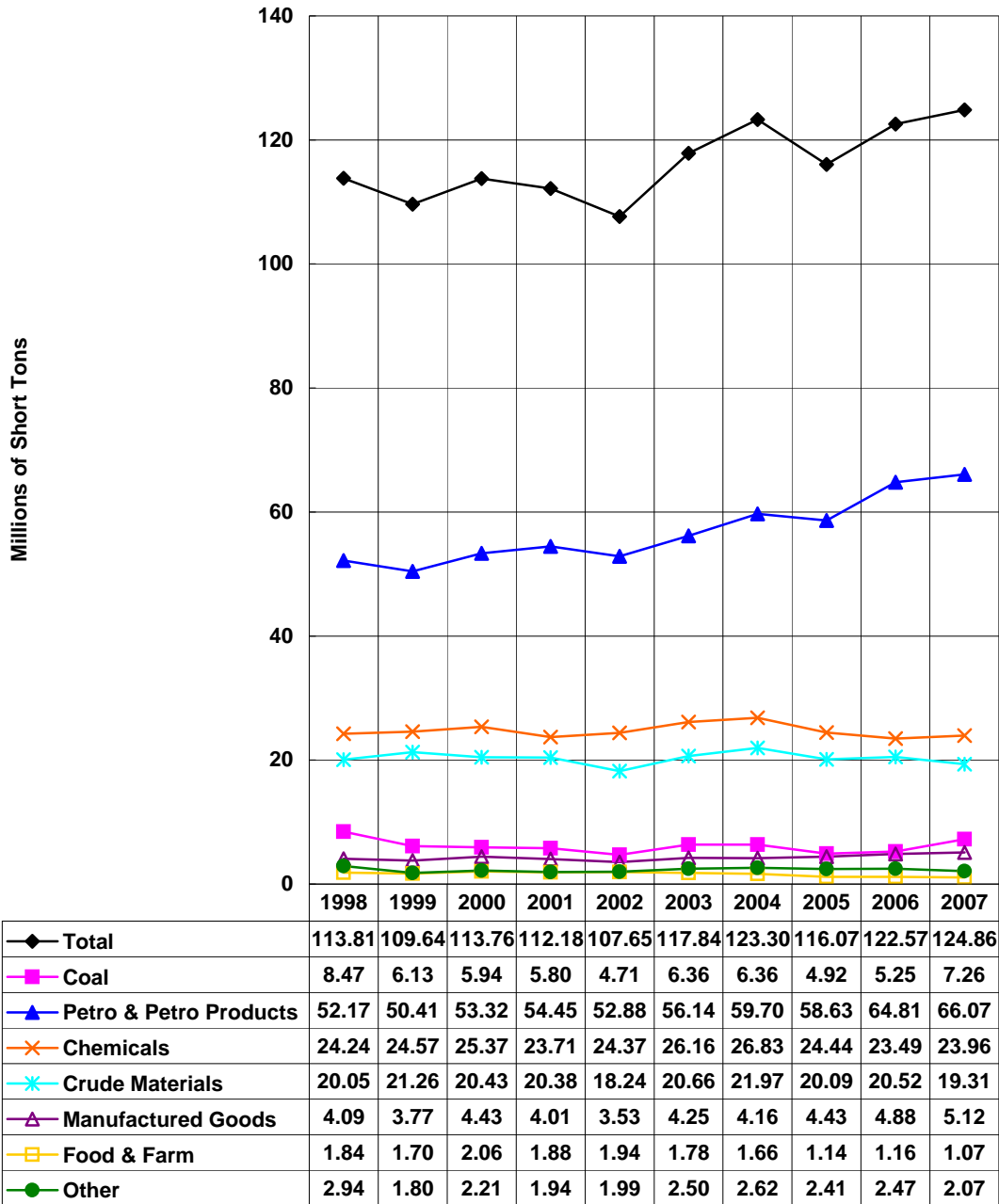
### Cumberland River - Upbound 1998-2007\*, Millions of Short Tons, By Commodity



\*Preliminary as of November 5, 2008.

## Gulf Intracoastal Waterway Totals

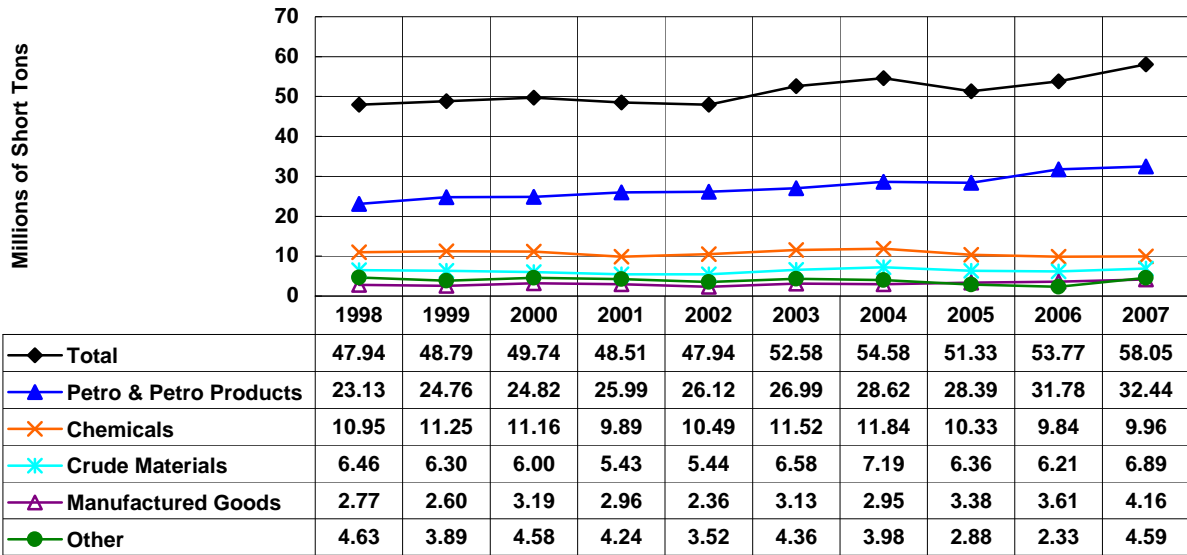
1998-2007\*, Millions of Short Tons, By Commodity



\*Preliminary as of November 5, 2008.  
Includes coastwise tonnage.

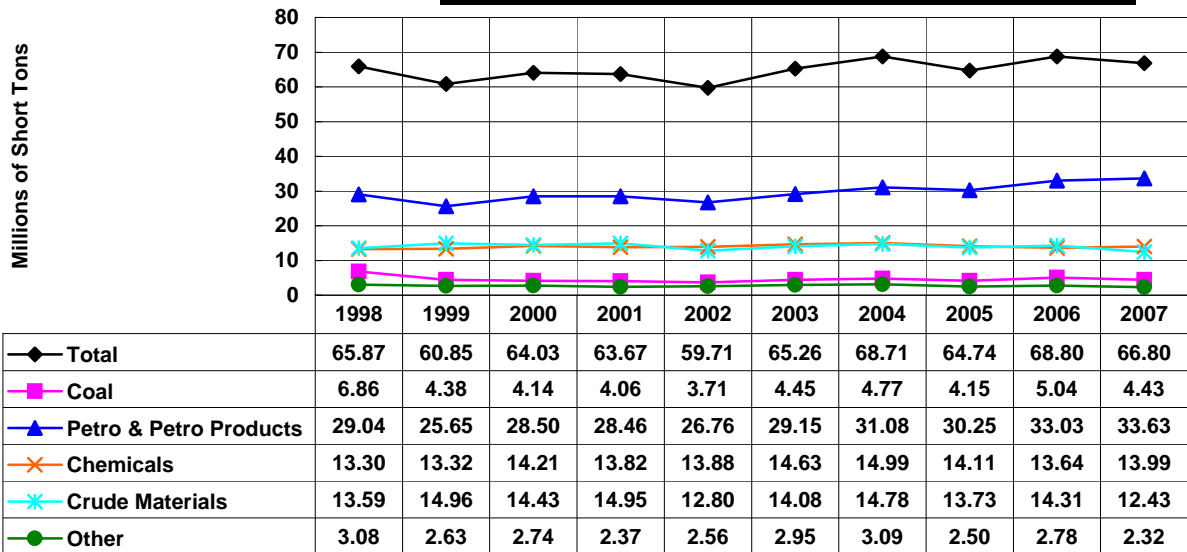


### Gulf Intracoastal Waterway Westbound 1998-2007\*, Millions of Short Tons, By Commodity



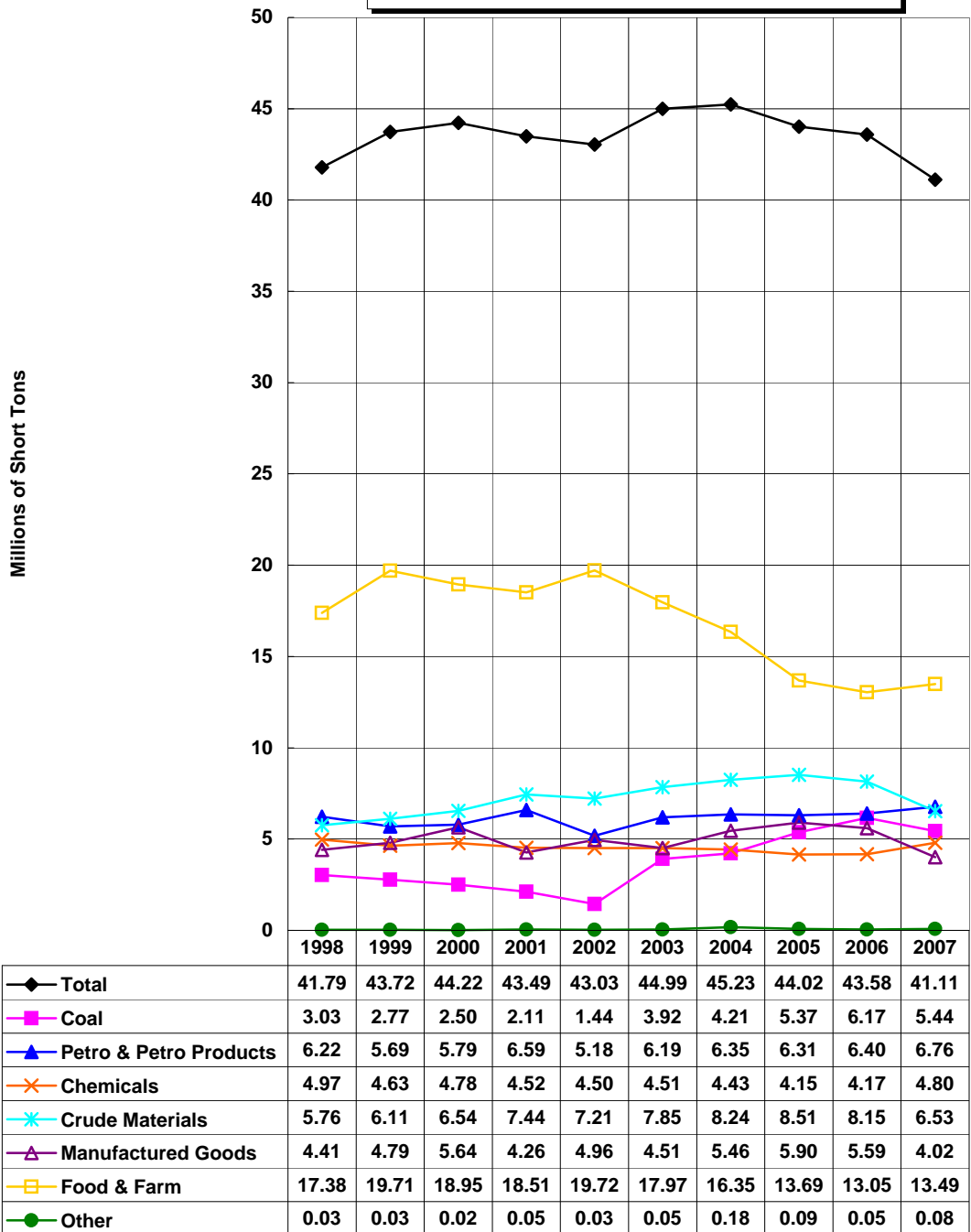
\*Preliminary as of November 5, 2008.  
Includes coastwise tonnage.

### Gulf Intracoastal Waterway Eastbound 1998-2007\*, Millions of Short Tons, By Commodity



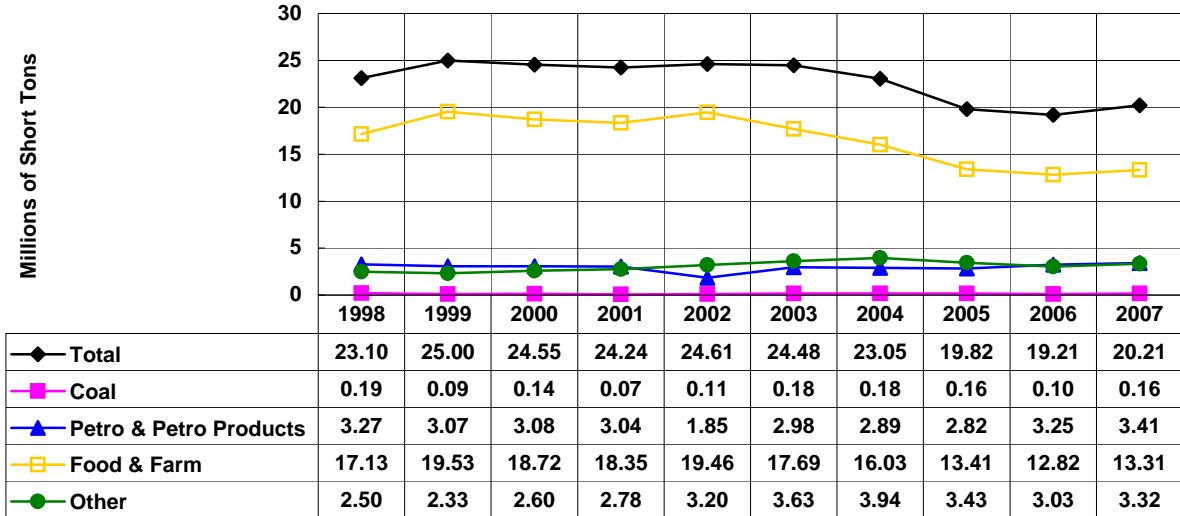
\*Preliminary as of November 5, 2008.  
Includes coastwise tonnage.

**Illinois Waterway - Totals**  
 1998-2007\*, Millions of Short Tons, By Commodity



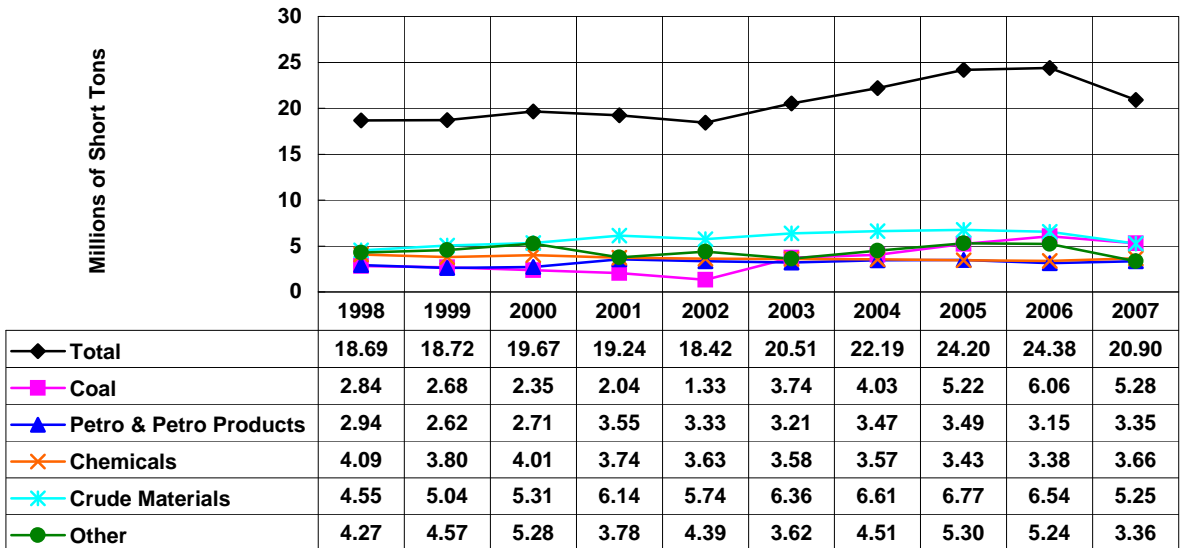
\*Preliminary as of November 5, 2008.

### Illinois Waterway - Downbound 1998-2007\*, Millions of Short Tons, By Commodity



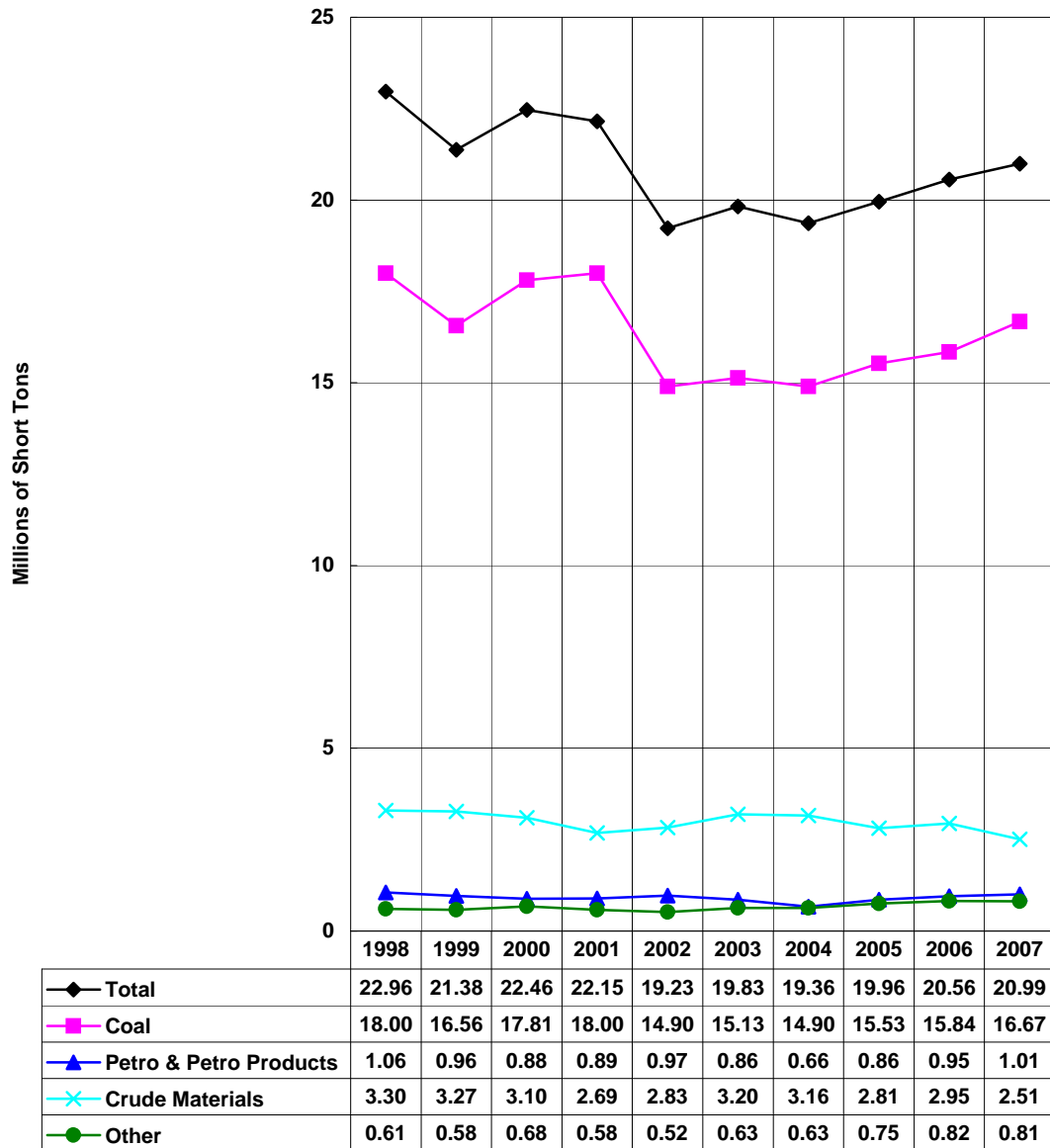
\*Preliminary as of November 5, 2008.

### Illinois Waterway - Upbound 1998-2007\*, Millions of Short Tons, By Commodity



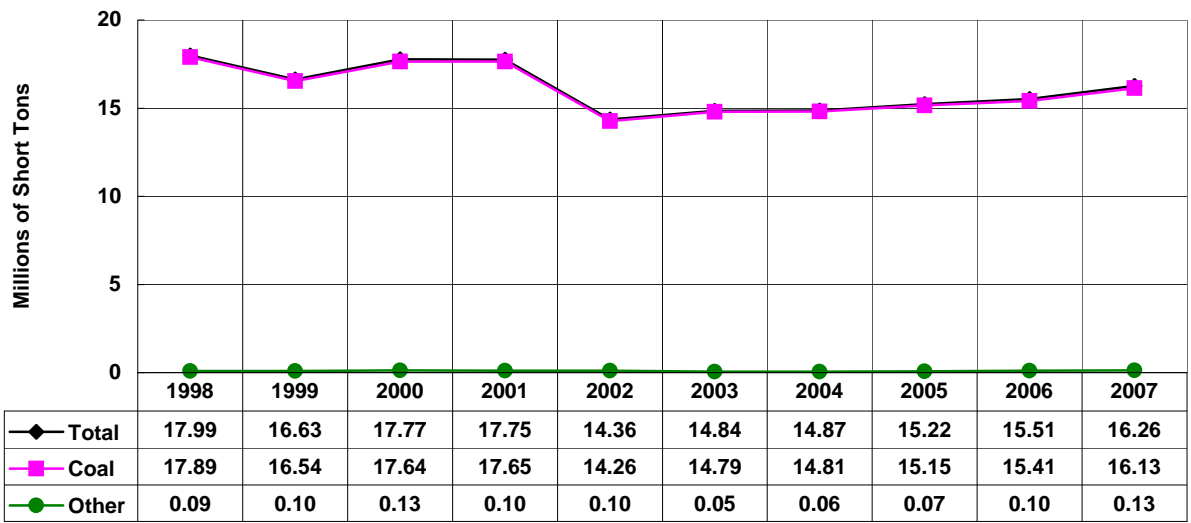
\*Preliminary as of November 5, 2008.

### Kanawha River - Totals 1998-2007\*, Millions of Short Tons, By Commodity



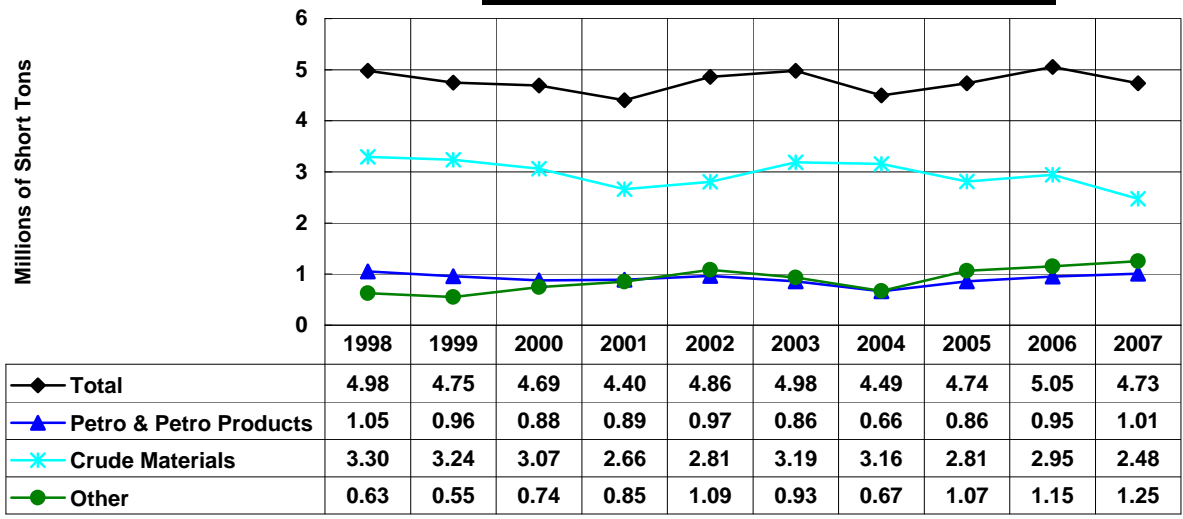
\*Preliminary as of November 5, 2008.

### Kanawha River - Downbound 1998-2007\*, Millions of Short Tons, By Commodity



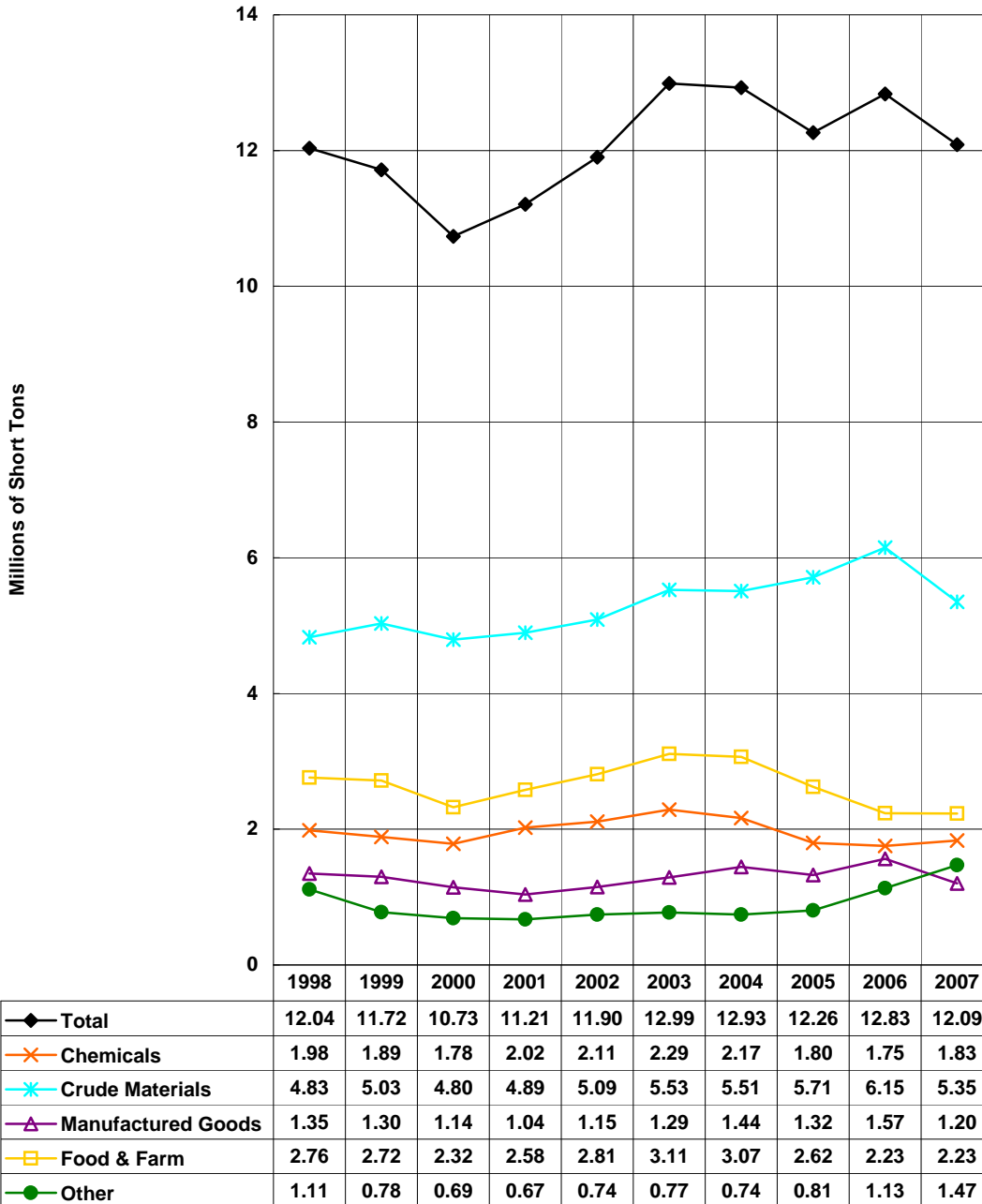
\*Preliminary as of November 5, 2008.

### Kanawha River - Upbound 1998-2007\*, Millions of Short Tons, By Commodity



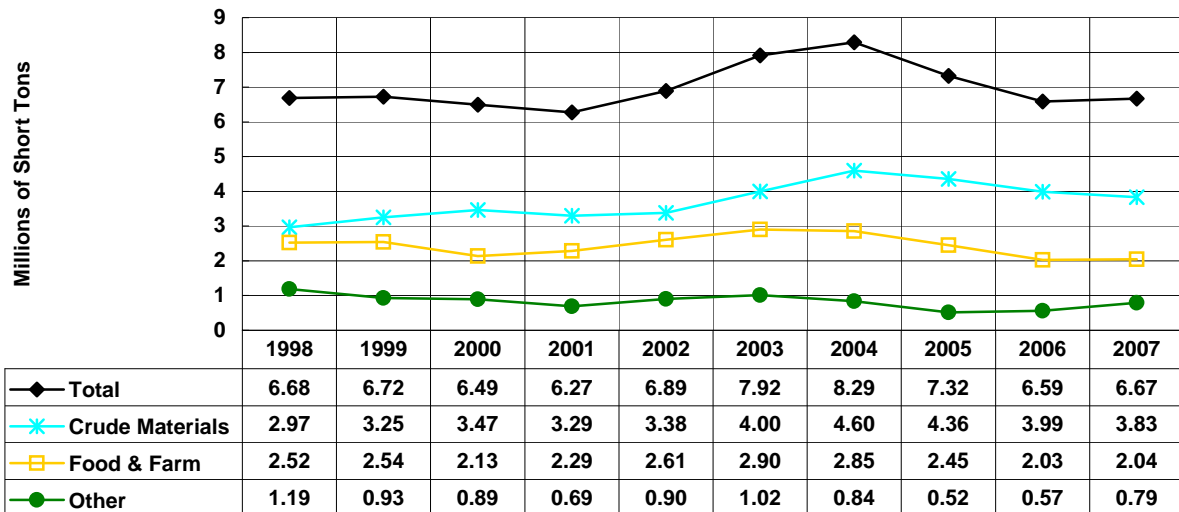
\*Preliminary as of November 5, 2008.

### McClellan-Kerr Waterway - Totals 1998-2007\*, Millions of Short Tons, By Commodity



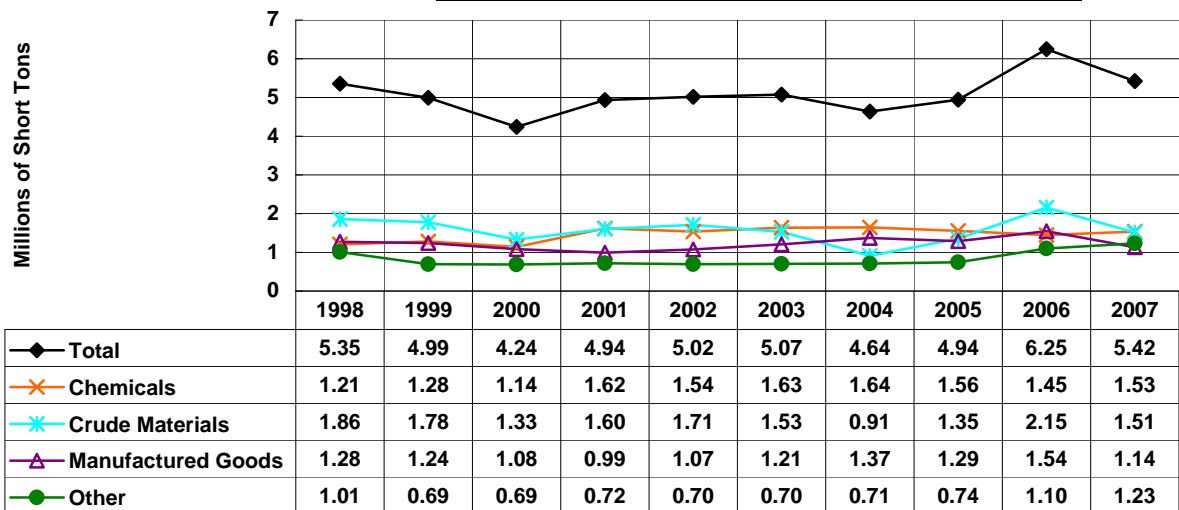
\*Preliminary as of November 5, 2008.

### McClellan-Kerr Waterway - Downbound 1998-2007\*, Millions of Short Tons, By Commodity



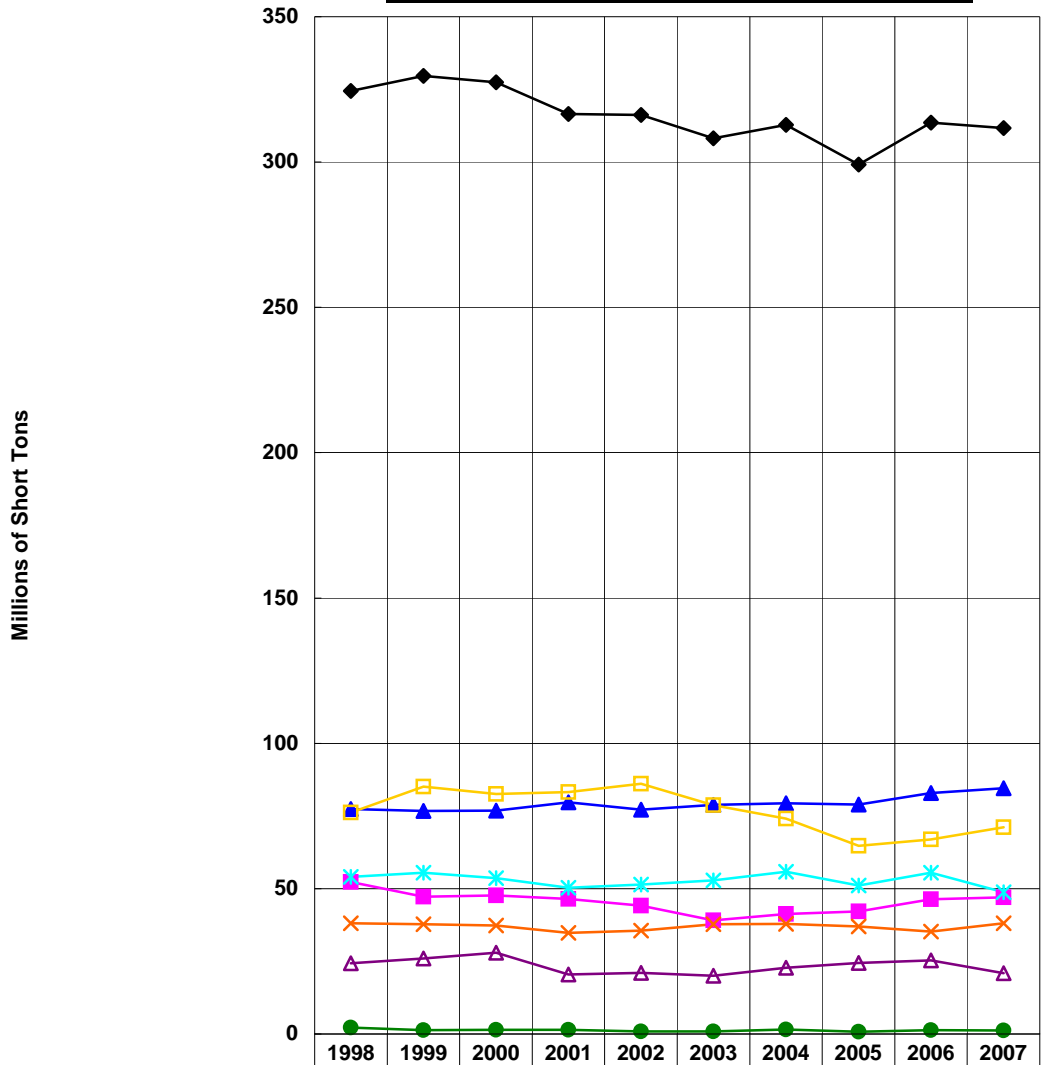
\*Preliminary as of November 5, 2008.

### McClellan-Kerr Waterway - Upbound 1998-2007\*, Millions of Short Tons, By Commodity



\*Preliminary as of November 5, 2008.

### Mississippi River - Totals 1998-2007\*, Millions of Short Tons, By commodity

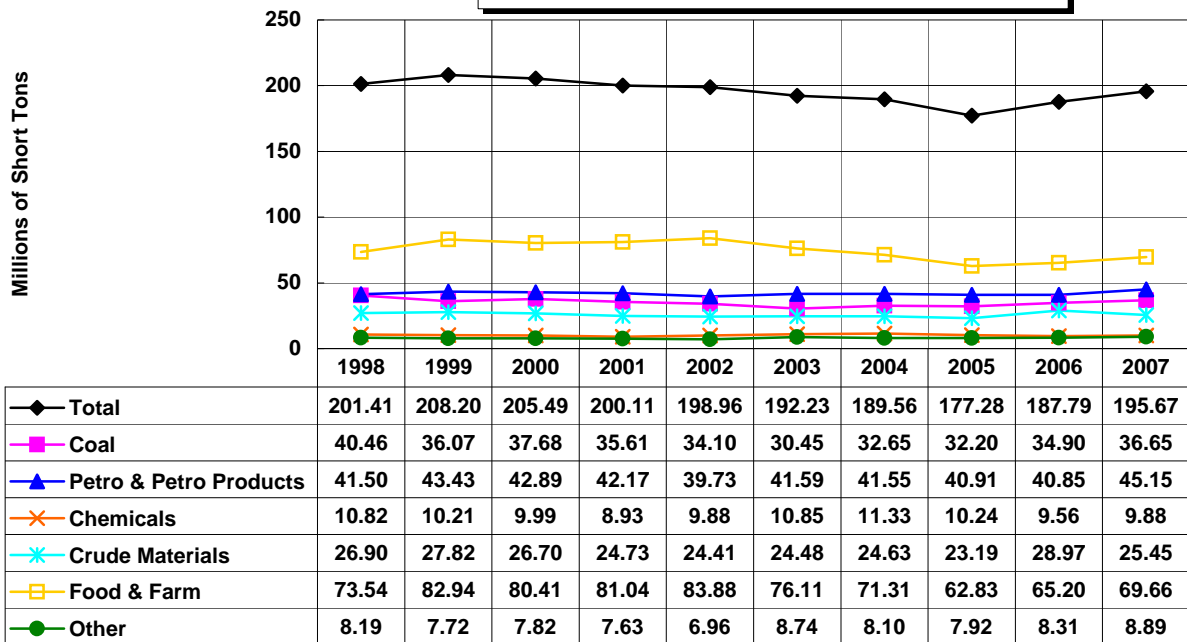


◆ Total	324.48	329.64	327.40	316.55	316.21	308.21	312.81	299.14	313.51	311.67
■ Coal	52.24	47.28	47.65	46.46	44.09	39.08	41.31	42.20	46.30	47.00
▲ Petro & Petro Products	77.44	76.70	76.83	79.75	77.16	78.83	79.33	78.93	82.92	84.56
✕ Chemicals	38.05	37.79	37.38	34.79	35.52	37.81	37.88	37.02	35.24	38.06
✧ Crude Materials	54.01	55.47	53.59	50.36	51.38	52.81	55.85	51.12	55.49	48.73
△ Manufactured Goods	24.36	25.93	27.97	20.45	21.02	20.00	22.76	24.40	25.28	20.97
□ Food & Farm	76.22	85.12	82.59	83.28	86.15	78.76	74.15	64.76	66.92	71.16
● Other	2.15	1.35	1.39	1.46	0.89	0.92	1.53	0.72	1.36	1.20

\*Preliminary as of November 5, 2008.  
Domestic tonnage only (including coastwise).

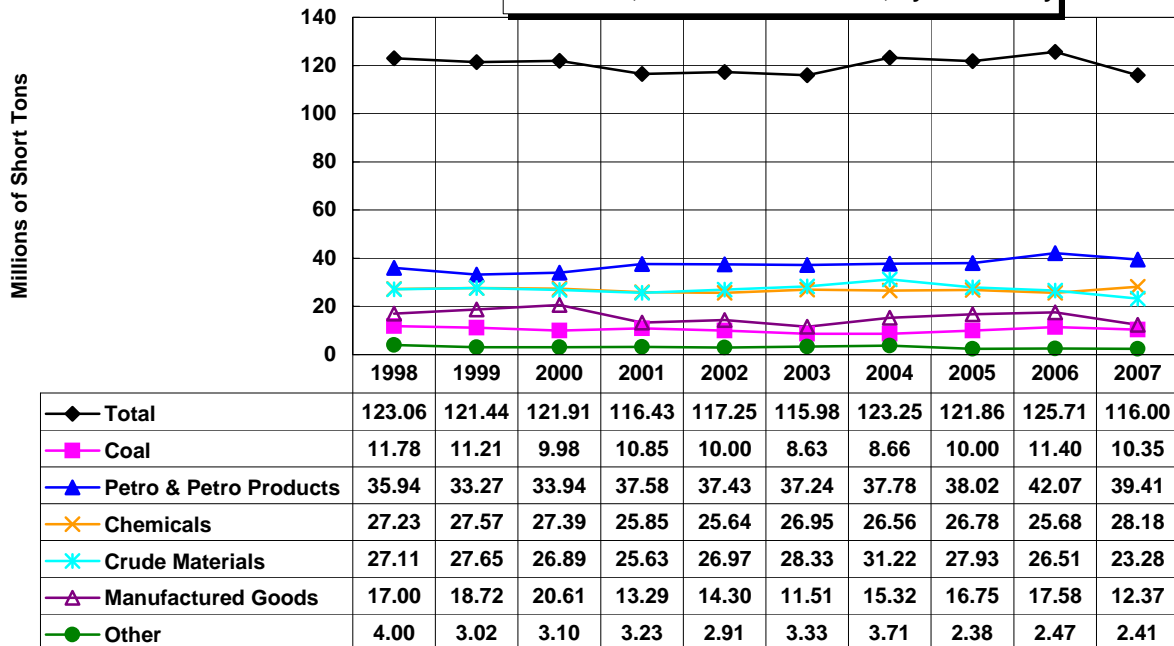


### Mississippi River - Downbound 1998-2007\*, Millions of Short Tons, By Commodity



\*Preliminary as of November 5, 2008.  
Domestic tonnage only (including coastwise).

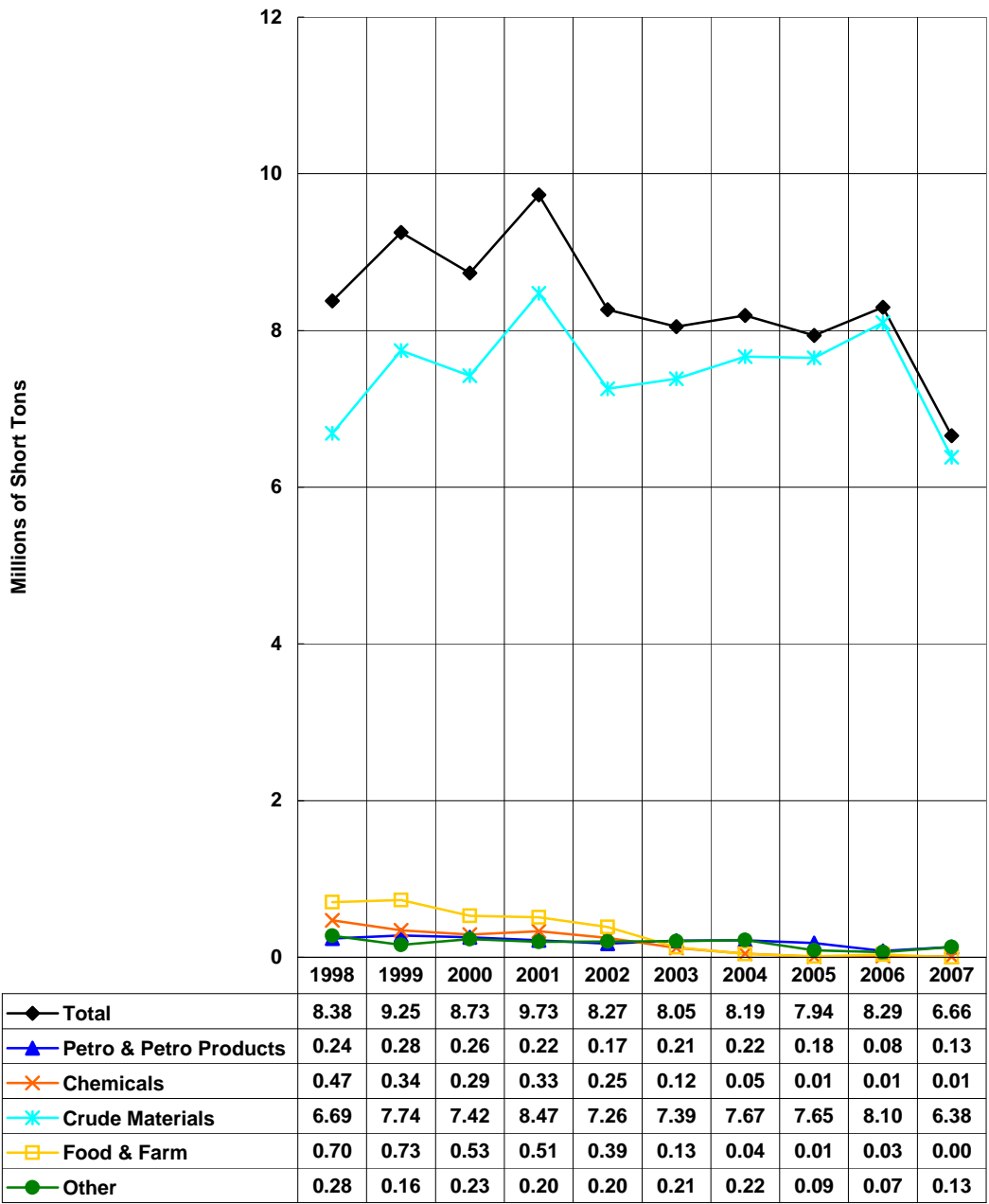
### Mississippi River - Upbound 1998-2007\*, Millions of Short Tons, By Commodity



\*Preliminary as of November 5, 2008.  
Domestic tonnage only (including coastwise).

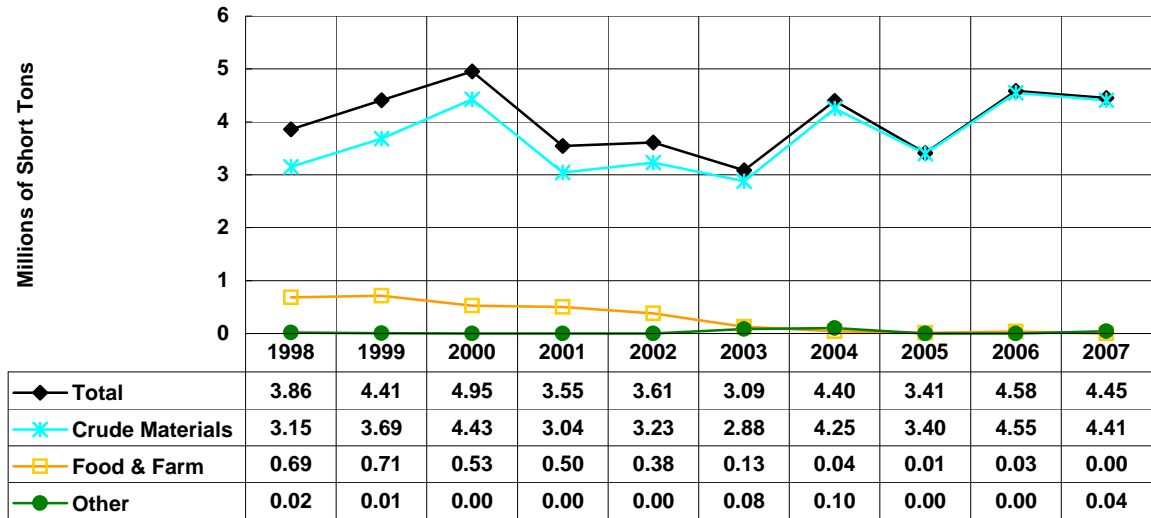
## Missouri River Totals

1998-2007\*, Millions of Short Tons, By Commodity



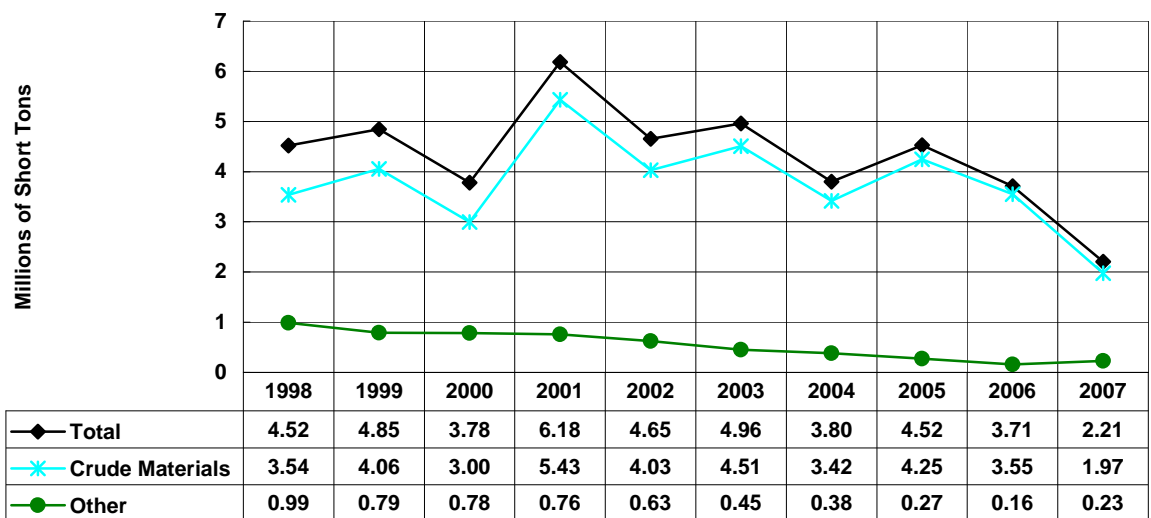
\*Preliminary as of November 5, 2008.

### Missouri River Downbound 1998-2007\*, Millions of Short Tons, By Commodity



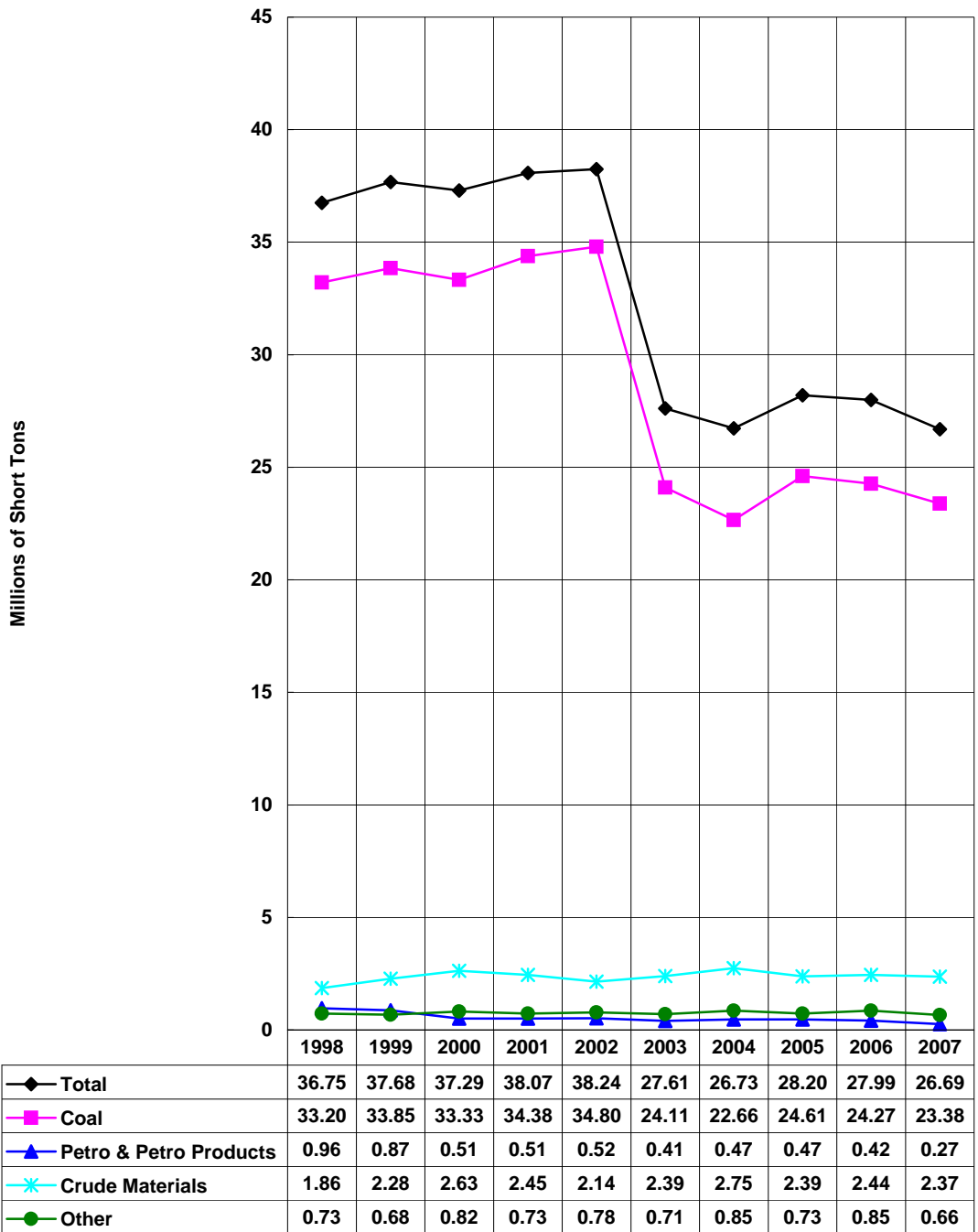
\*Preliminary as of November 5, 2008.

### Missouri River Upbound 1998-2007\*, Millions of Short Tons, By Commodity



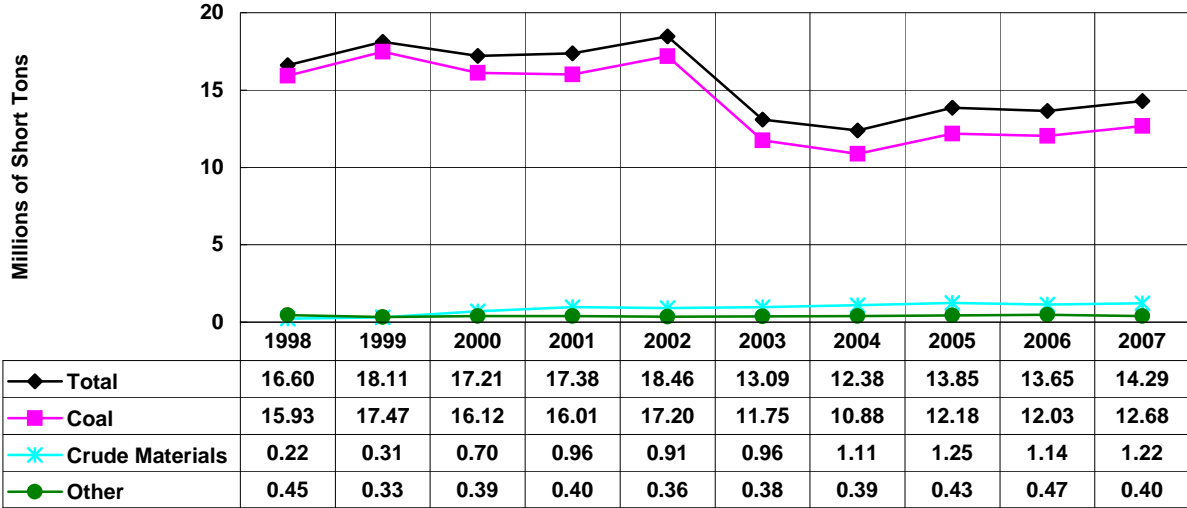
\*Preliminary as of November 5, 2008.

**Monongahela River - Totals**  
 1998-2007\*, Millions of Short Tons, By Commodity



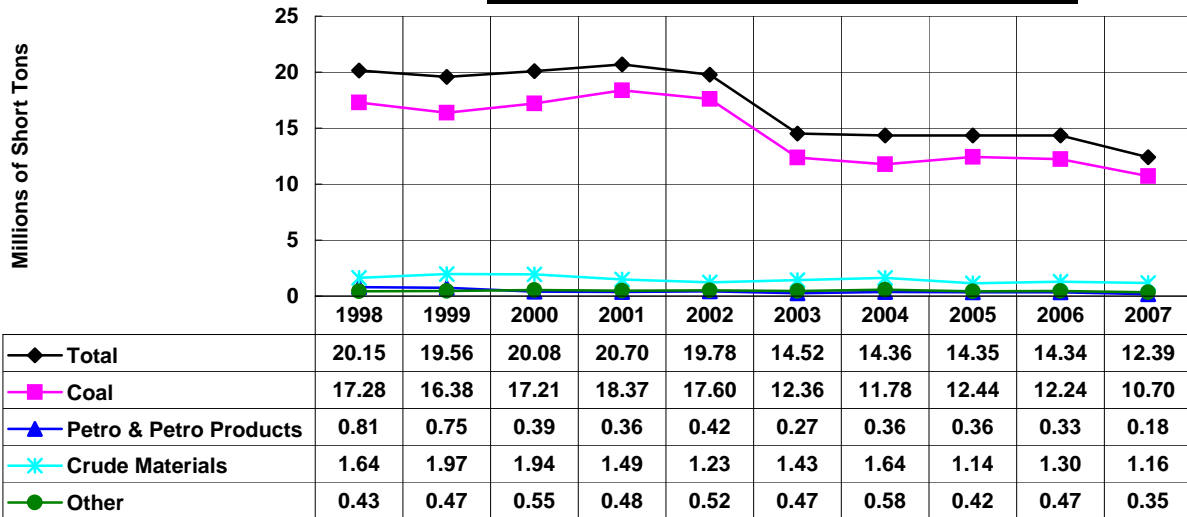
\*Preliminary as of November 5, 2008.

### Monongahela River - Downbound 1998-2007\*, Millions of Short Tons, By Commodity



\*Preliminary as of November 5, 2008.

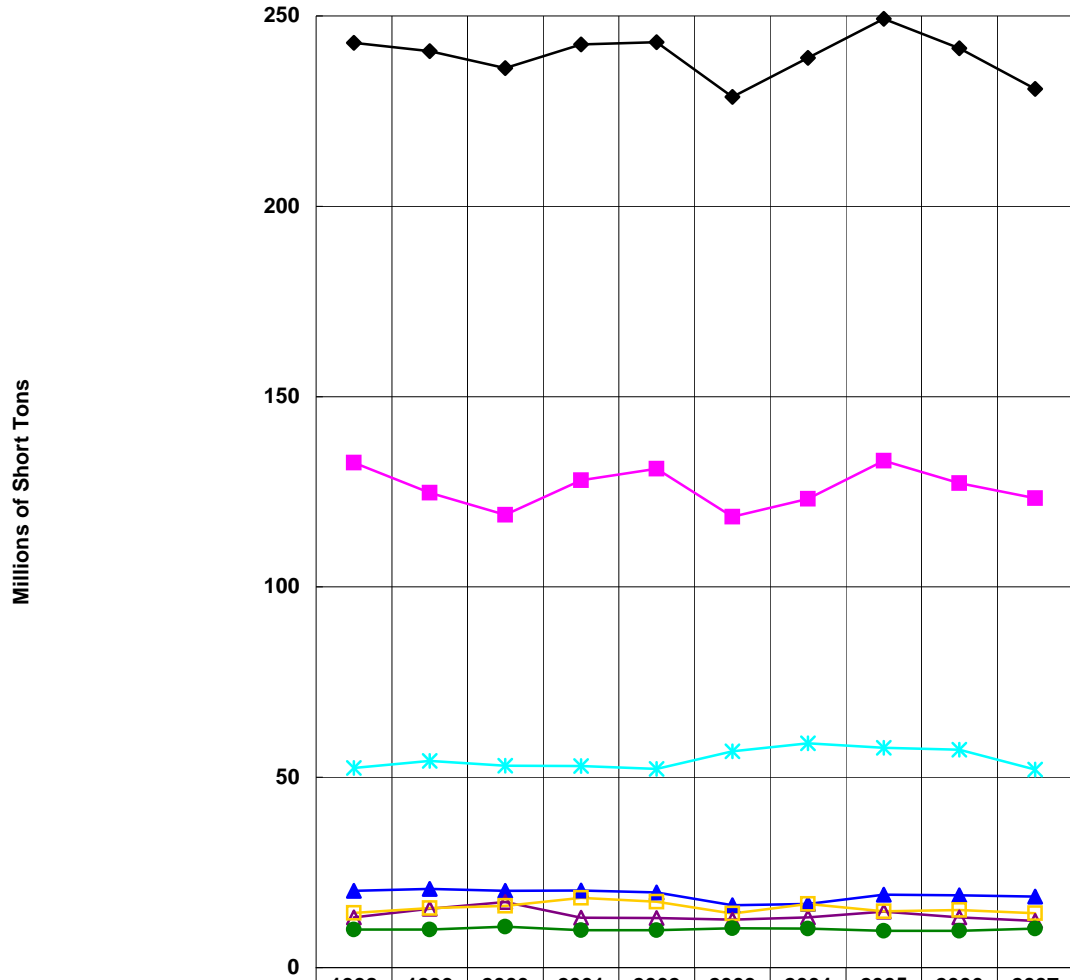
### Monongahela River - Upbound 1998-2007\*, Millions of Short Tons, By Commodity



\*Preliminary as of November 5, 2008.

## Ohio River - Totals

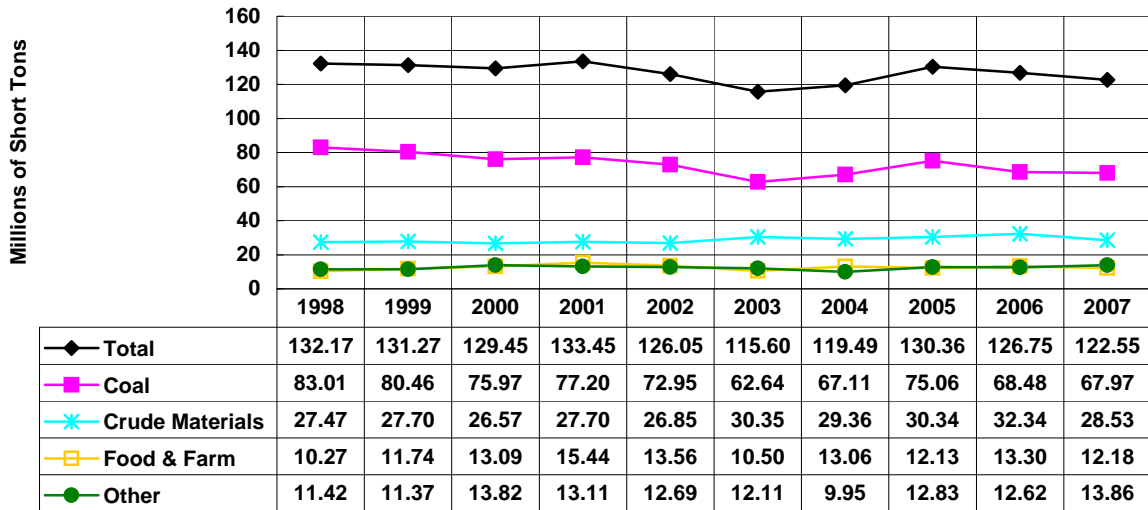
1998-2007\*, Millions of Short Tons, By Commodity



	1998	1999	2000	2001	2002	2003	2004	2005	2006	2007
◆ Total	242.90	240.79	236.30	242.50	243.15	228.77	238.98	249.21	241.54	230.85
■ Coal	132.69	124.75	118.93	128.00	131.04	118.46	123.11	133.15	127.31	123.34
▲ Petro & Petro Products	20.16	20.64	20.19	20.28	19.75	16.38	16.76	19.17	18.98	18.66
* Crude Materials	52.42	54.28	53.02	52.93	52.22	56.85	58.94	57.75	57.21	52.04
▲ Manufactured Goods	13.20	15.49	17.19	13.08	13.00	12.58	13.19	14.70	13.21	12.26
▣ Food & Farm	14.39	15.60	16.23	18.34	17.33	14.17	16.74	14.78	15.14	14.28
● Other	10.04	10.02	10.73	9.86	9.81	10.34	10.25	9.67	9.68	10.27

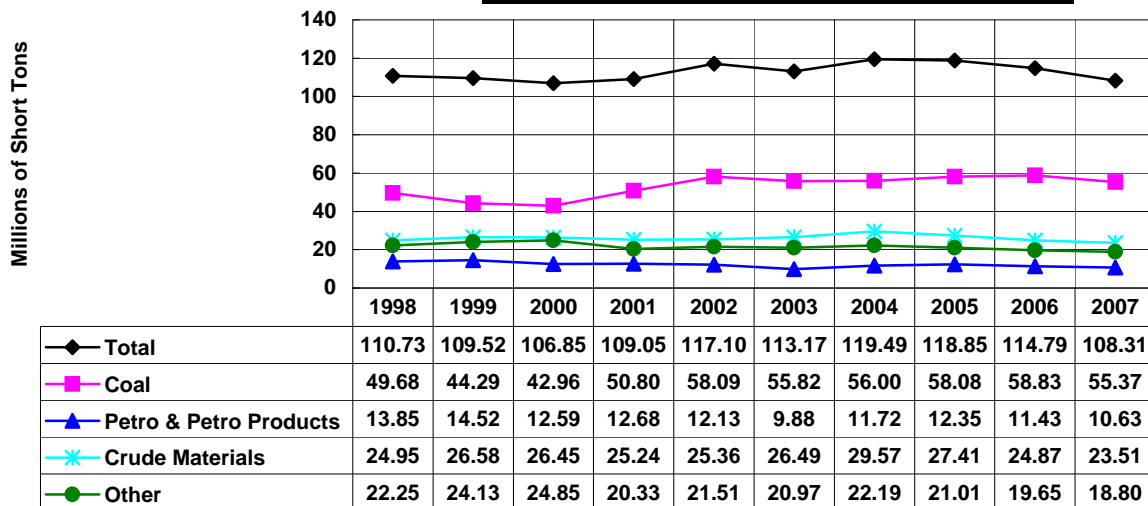
\*Preliminary as of November 5, 2008.

### Ohio River - Downbound 1998-2007\*, Millions of Short Tons, By Commodity



\*Preliminary as of November 5, 2008.

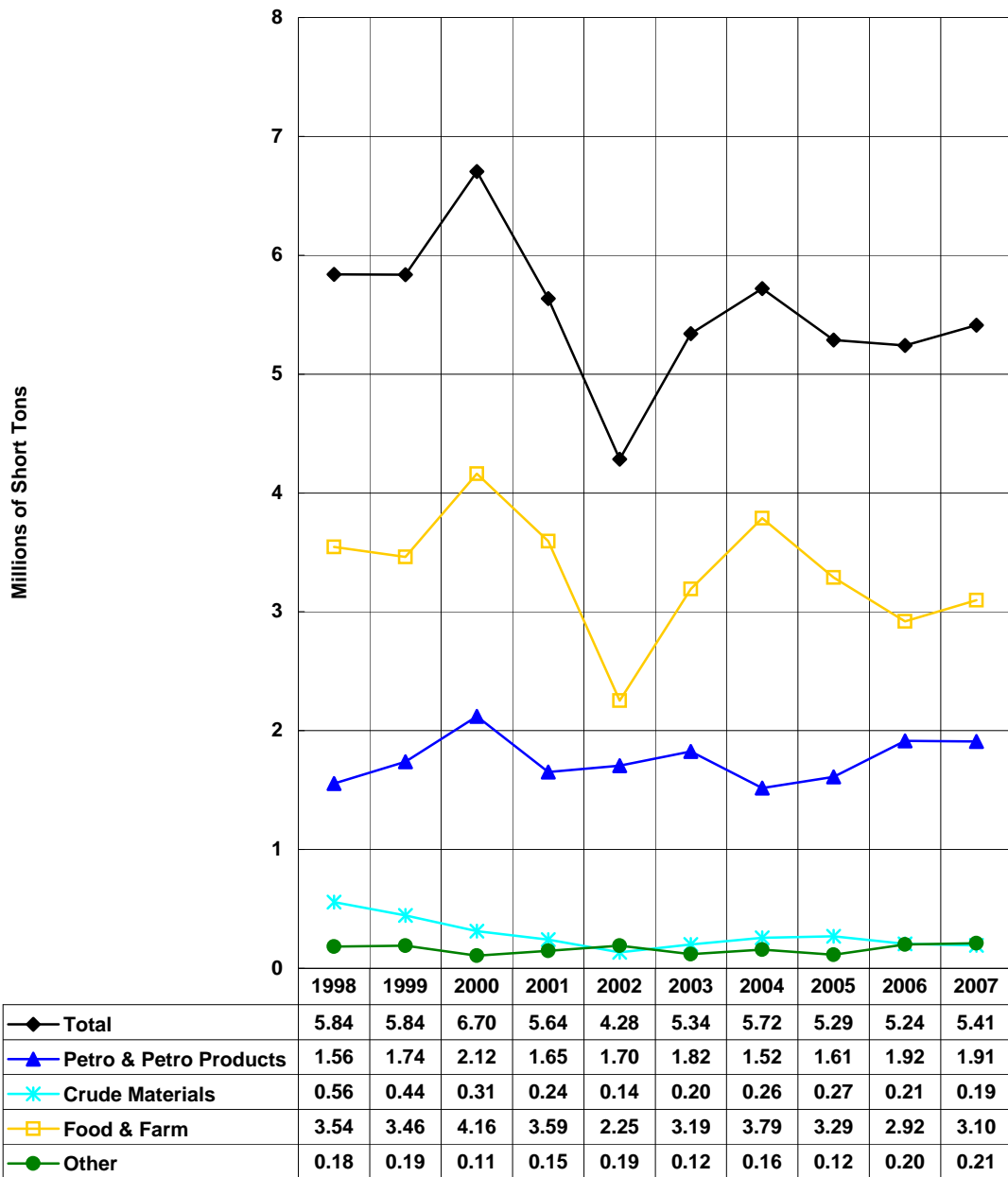
### Ohio River - Upbound 1998-2007\*, Millions of Short Tons, By Commodity



\*Preliminary as of November 5, 2008.

## Snake River - Totals

1998-2007\*, Millions of Short Tons, By Commodity

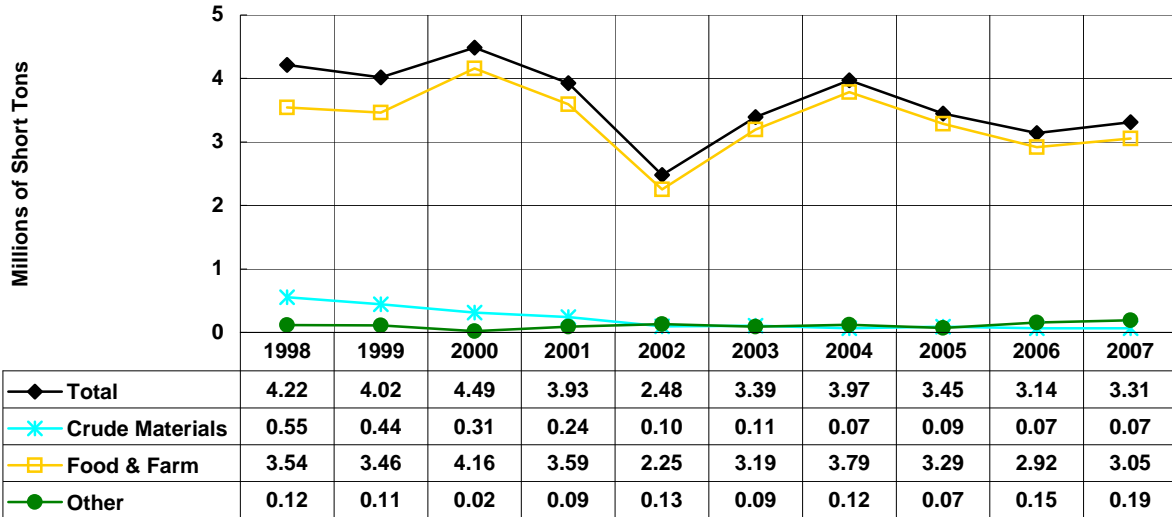


\*Preliminary as of November 5, 2008.



## Snake River - Downbound

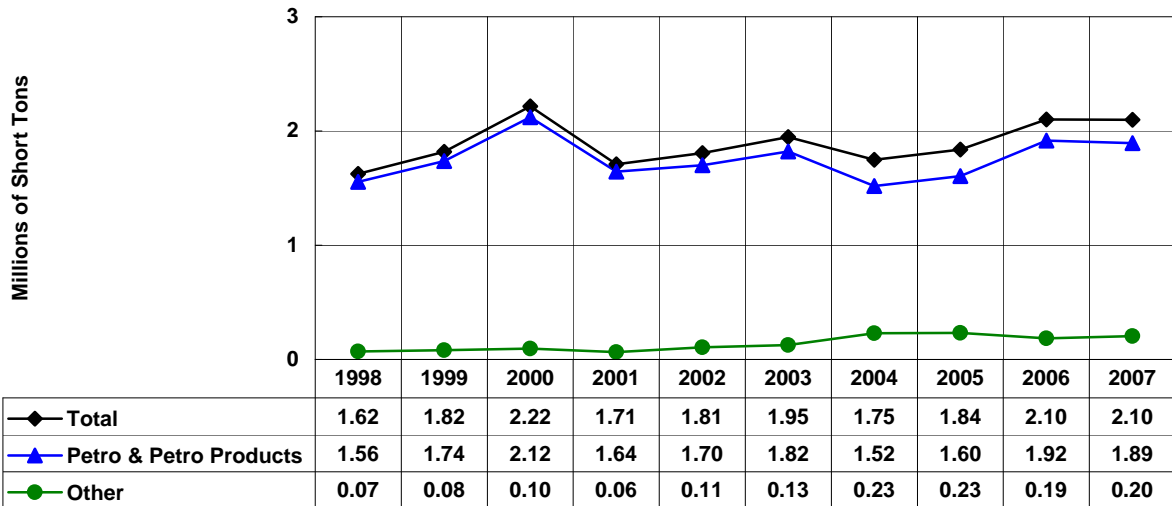
1998-2007\*, Millions of Short Tons, By Commodity



\*Preliminary as of November 5, 2008.

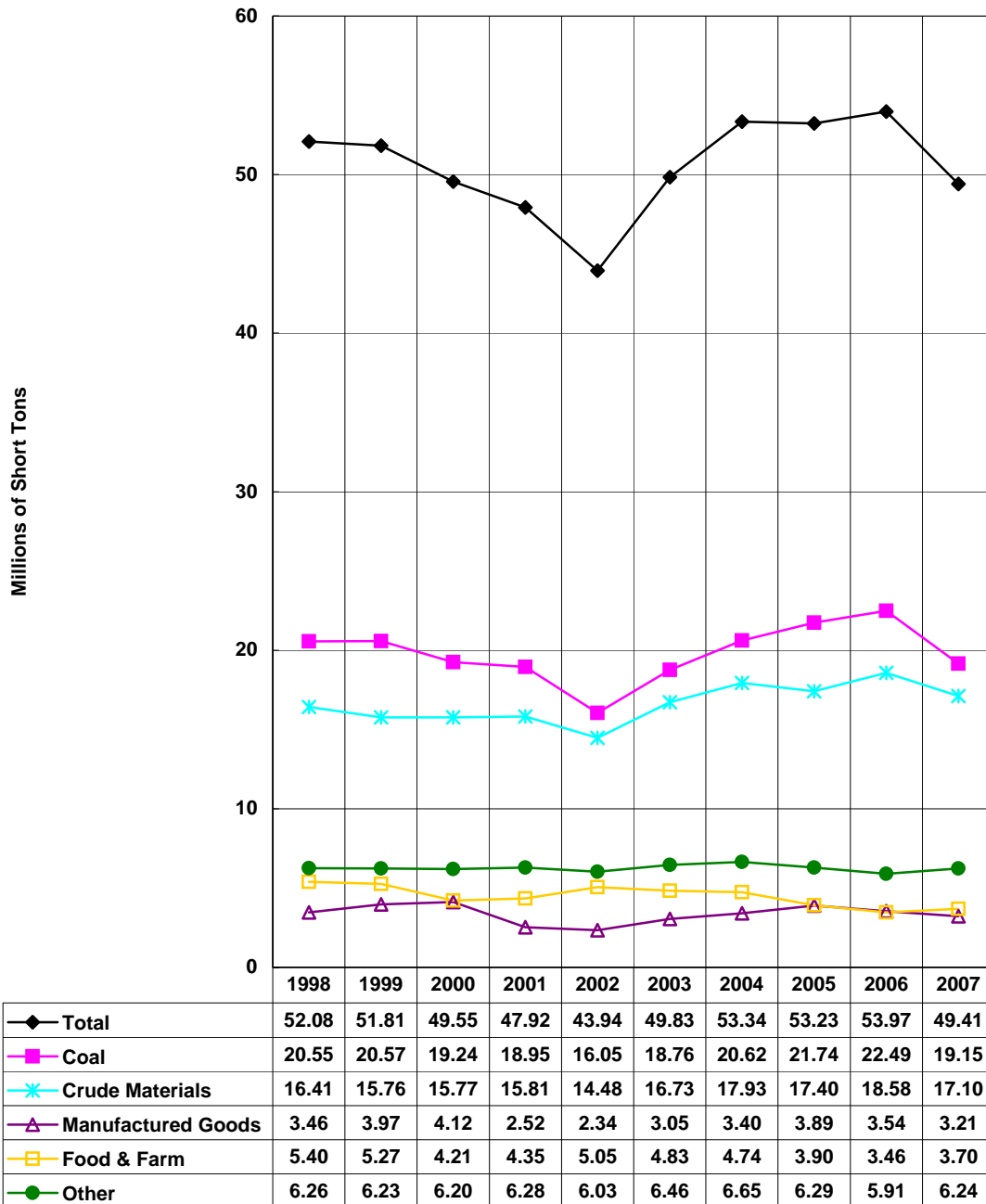
## Snake River - Upbound

1998-2007\*, Millions of Short Tons, By Commodity



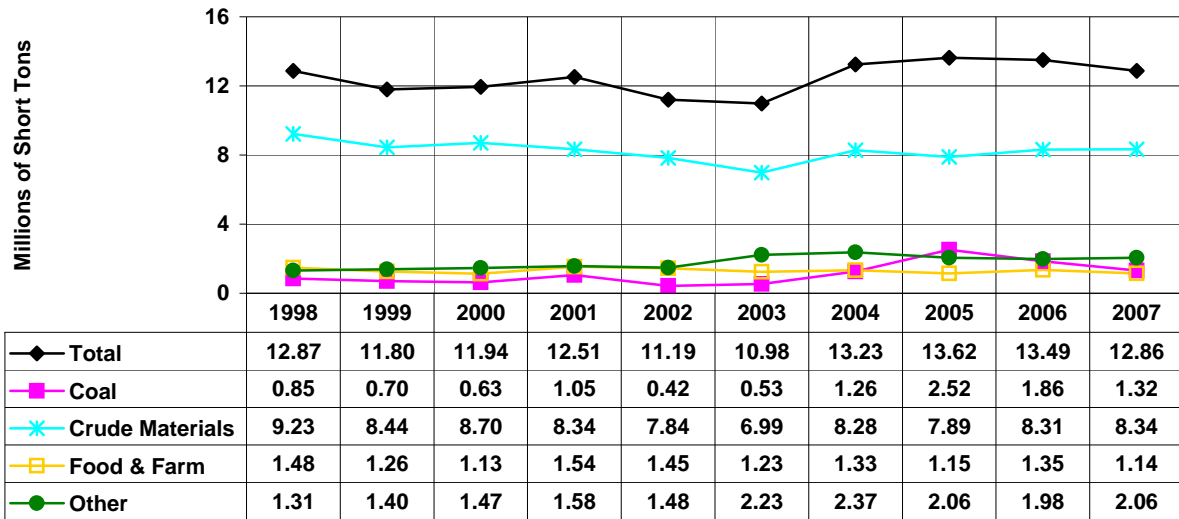
\*Preliminary as of November 5, 2008.

**Tennessee River - Totals**  
1998-2007\*, Millions of Short Tons, By Commodity



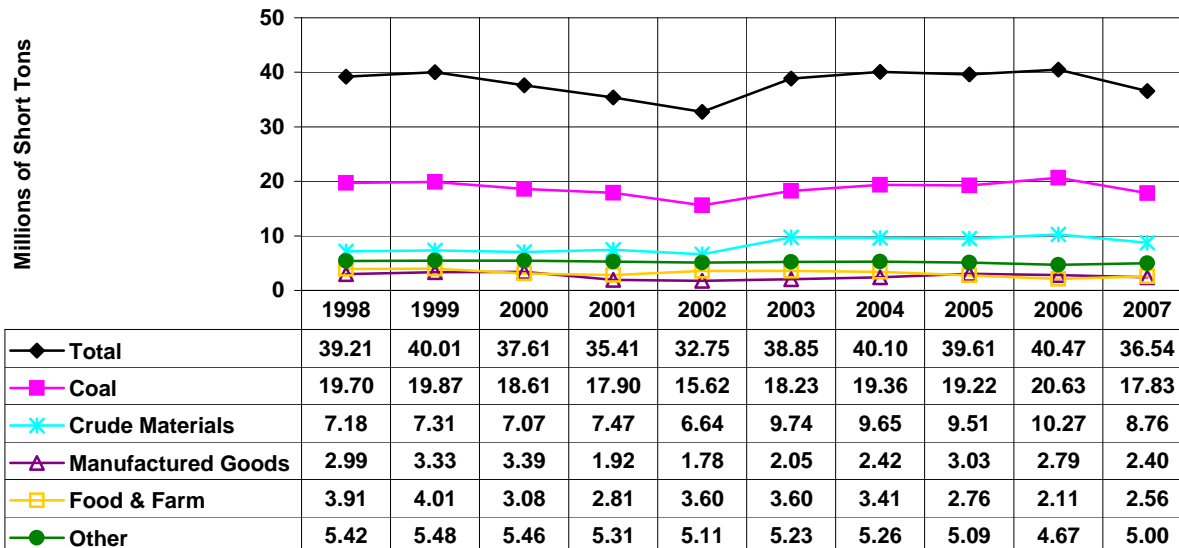
\*Preliminary as of November 5, 2008.

### Tennessee River - Downbound 1998-2007\*, Millions of Short Tons, By Commodity



\*Preliminary as of November 5, 2008.

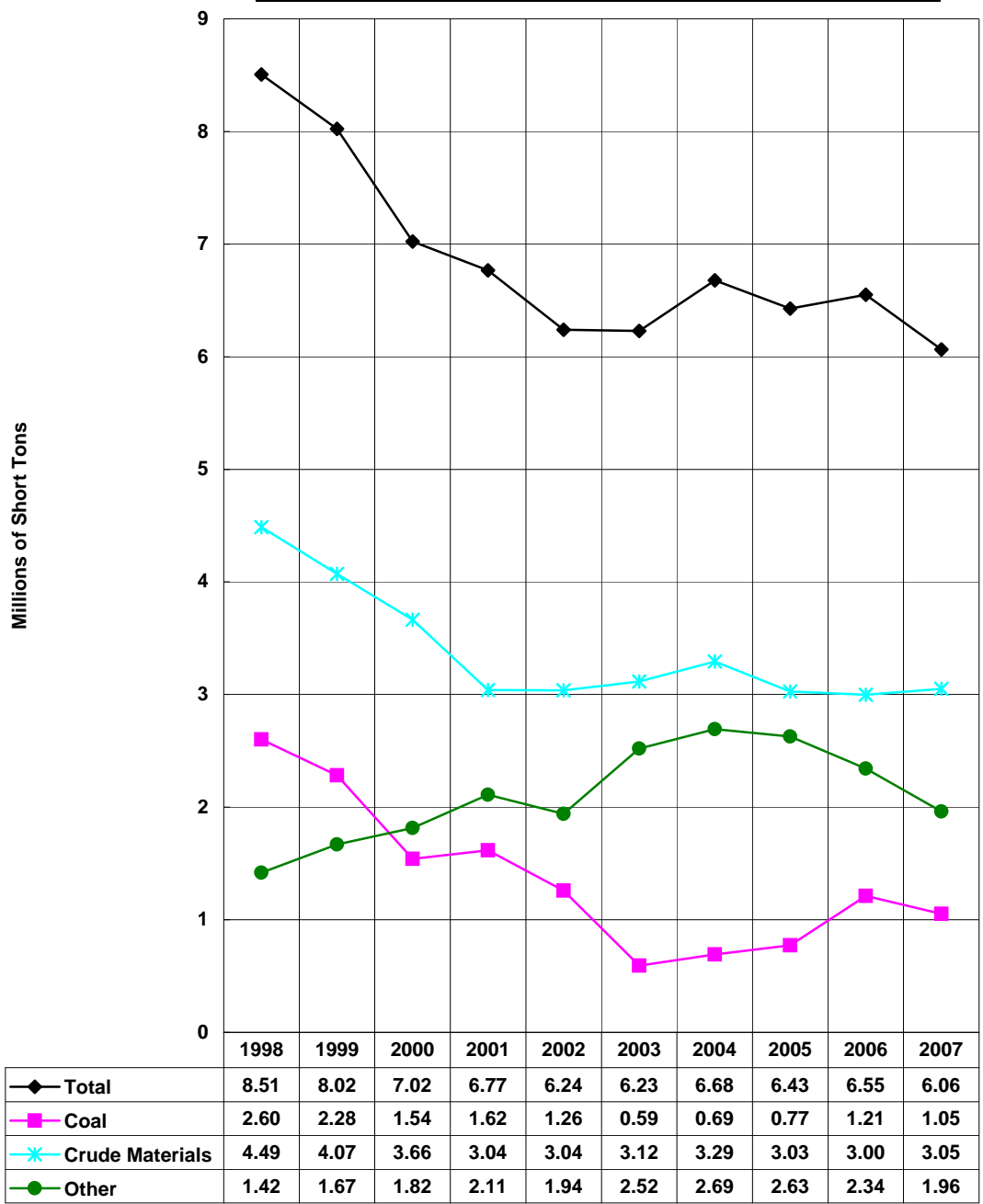
### Tennessee River - Upbound 1998-2007\*, Millions of Short Tons, By Commodity



\*Preliminary as of November 5, 2008.

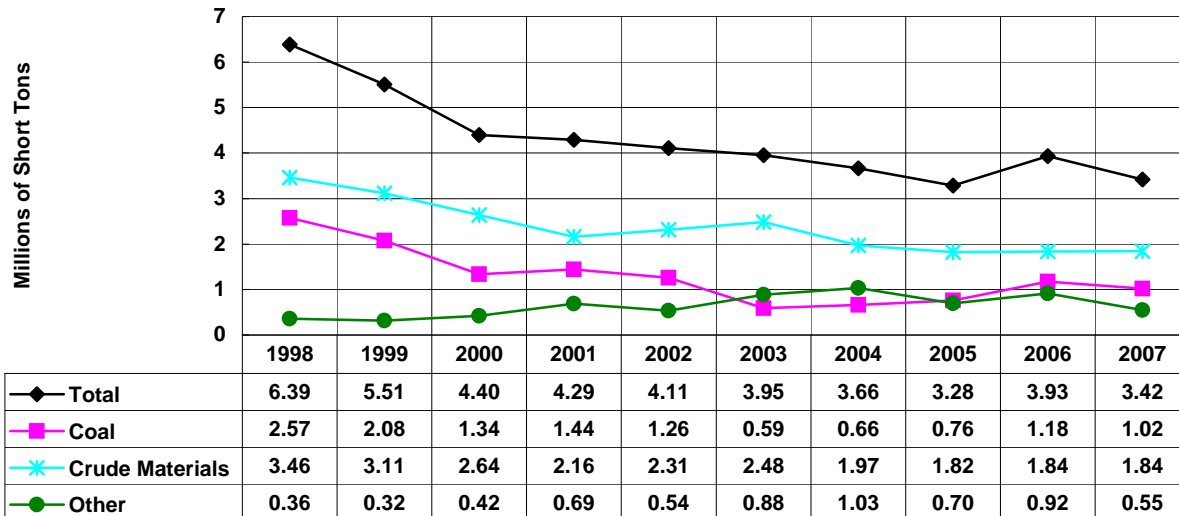
## Tennessee-Tombigbee Waterway - Totals

1998-2007\*, Millions of Short Tons, By Commodity



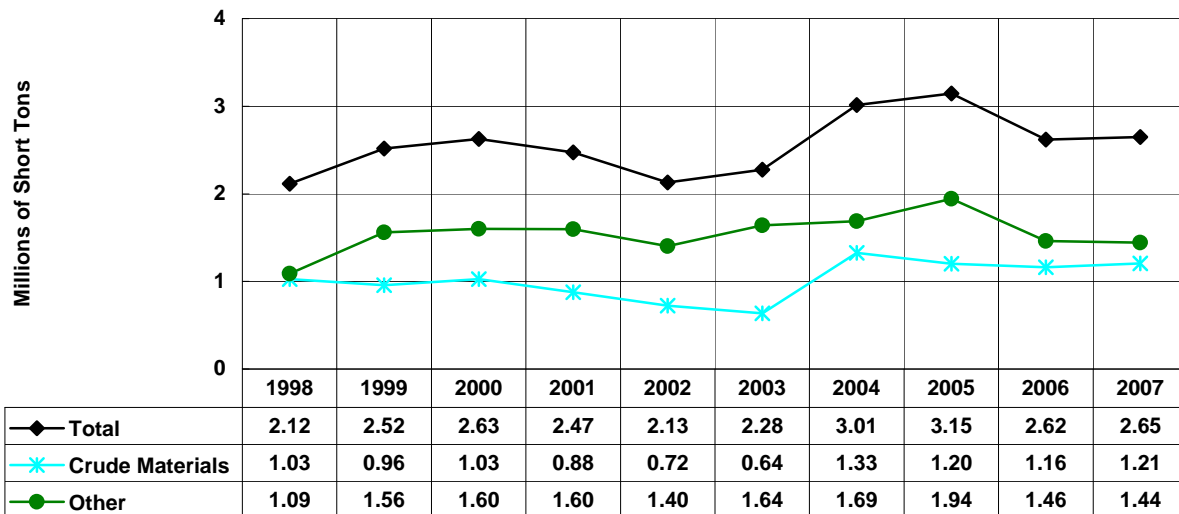
\*Preliminary as of November 5, 2008.

### Tennessee - Tombigbee Waterway Southbound, 1998-2007\*, Millions of Short Tons, By Commodity



\*Preliminary as of November 5, 2008.

### Tennessee - Tombigbee Waterway Northbound, 1998-2007\*, Millions of Short Tons, By Commodity



\*Preliminary as of November 5, 2008.