

Trail Information

The Mountain Man Trail (solid lines) is designated primarily as a single-track trail for dirt bikers; however, mountain-bikers, horseback riders and hikers may also use the trail.

The main trail begins at the Zing trailhead where there is an unloading and parking area. Camping is not permitted at the trailhead. The trail continues for several miles in a north easterly direction. This trail is blazed with a yellow diamond pattern.

The Jeep Trail (dotted lines) is a double-track trail designed for Off-Highway Vehicle riders, dirt bikers, mountain bikers, horseback riders and hikers.

The Zing trailhead is the main entrance for the Jeep Trail. This trail is designated with an orange diamond. Most of this trail follows old forest roads. Some sections of the trail that were created to provide connecting loops require crossing steep slopes. These particular sections offer a greater challenge, requiring more skill.

High clearance vehicles, such as jeeps, may only travel on trail numbers 42 and 51. The northern entrance to these trails is at the Austin trailhead. Trail 42 may also be accessed from Van Buren County Road 423. Access to the southern end of trail 51 is gained from Forest Service Road 1334 near Brock Creek Lake Dam.

Safety First

- Every rider should wear personal safety gear such as a helmet, goggles and gloves.
- Stay on the trail.
- Share your travel plans. Make a trail plan and stick to it. Let someone know where you are going and when you expect to return.
- Travel with a partner.

Be prepared. Carry navigational aides, water and emergency supplies.

- Stay informed of current and expected weather conditions. Water can rise quickly at stream crossings during heavy rains.
- Do not depend on cell phones. Reception and transmission signals are intermittent within the forest.

Regulations

- Cross-country travel is not permitted. Stay on the designated trails.
- All Off-Highway Vehicles (OHVs) must have a muffler in good working condition and be equipped with a spark arrester. Fires started due to faulty equipment will be the responsibility of the user.
- Drivers are prohibited from operating any vehicle while under the influence of alcohol or drugs.
- Persons less than 12 years of age are prohibited from operating OHVs unless accompanied by an adult 18 years of age or older.
- Use headlights between one half hour before sunset to one half hour after sunrise.
- Always ride in a single-file formation when riding in groups.
- Vehicles owned by Arkansas residents must be registered with the Arkansas Department of Revenue.

For more information, contact:

Big Piney Ranger District
12000 SR 27
Hector, AR 72843
(479) 284-3150



The U.S. Department of Agriculture (USDA) prohibits discrimination in all its programs and activities on the basis of race, color, national origin, age, disability, and where applicable, sex, marital status, familial status, parental status, religion, sexual orientation, genetic information, political beliefs, reprisal, or because all or a part of an individual's income is derived from any public assistance program. (Not all prohibited bases apply to all programs.) Persons with disabilities who require alternative means for communication of program information (Braille, large print, audiotape, etc.) should contact USDA's TARGET Center at (202) 720-2600 (voice and TDD). To file a complaint of discrimination write to USDA, Director, Office of Civil Rights, 1400 Independence Avenue, S.W., Washington, D.C. 20250-9410 or call (800) 795-3272 (voice) or (202) 720-6382 (TDD). USDA is an equal opportunity provider and employer.

Ozark-St. Francis National Forests

Big Piney Ranger District

Brock Creek Trails

Off Highway Vehicles
Dirt Biking
Mountain Biking
Horseback Riding
Hiking



Southern Region

Arkansas

October 2008

Attractions:

The Big Piney Ranger District is located within the heart of the Ozarks. Visitors can view picturesque rock bluffs, swim in crystal clear streams and hike wooded hillsides.

The Brock Creek Trails are a multi-use trail system located on the Big Piney Ranger District in the beautiful Ozark National Forest. The trail system consists of two major loops and many interconnecting loops. The combined loops provide over 42 miles of trail for dirt bikers, Off-Highway Vehicle (OHV) riders, 4-wheelers, mountain bikers and horseback riders.

The trails meander through majestic oak/hickory forests and occasional areas of pine. These areas also contain small streams that traverse through the trail system, adding to the beauty of the area.

The Brock Creek Trails offer riders of all skill levels a great place for outdoor recreation that is suitable for the whole family.

Enjoying the Trails:

Traffic flows in both directions on the trails, so watch for oncoming traffic. Small portions of the double track are used to access the single track trails, so keep in mind that larger vehicles could be sharing those sections of the trails.

Most of the single-track trails are designed for slower technical riding. Remember your skill level!

Facilities:

Brock Creek Trail

Parking & unloading area at the trailhead.

Brock Creek Campground (Nearby)

Vault Toilet

Six campsites (with picnic tables, fire rings, and lantern posts)

NOTE: There is no water or electrical hook-ups available.

Fees:

User fees and regulations are posted at the self-service pay station near the entrance.

Directions:

To Reach Zing Trailhead, take Conway County Road 32 north from Jerusalem for six miles then turn right on Van Buren County Road 226 for 1 mile then left on Van Buren County Road 423 for 1.5 miles, trailhead is on the left.

Mountain Man Trailhead is 3 miles past Zing Trailhead on the right.

To Reach Austin Trailhead, take Conway County Road 32 north from Jerusalem for 10 miles turn right on Van Buren County Road 2 for 1.5 miles, trailhead is on the right.

Trail Designations

Yellow Diamonds - Single Track Trails (Numbers 20 - 29 on map)

Orange Diamonds - Double Track Trails (Numbers 40 - 52 on map)

Ozark-St. Francis National Forests <http://www.aokforests.com>

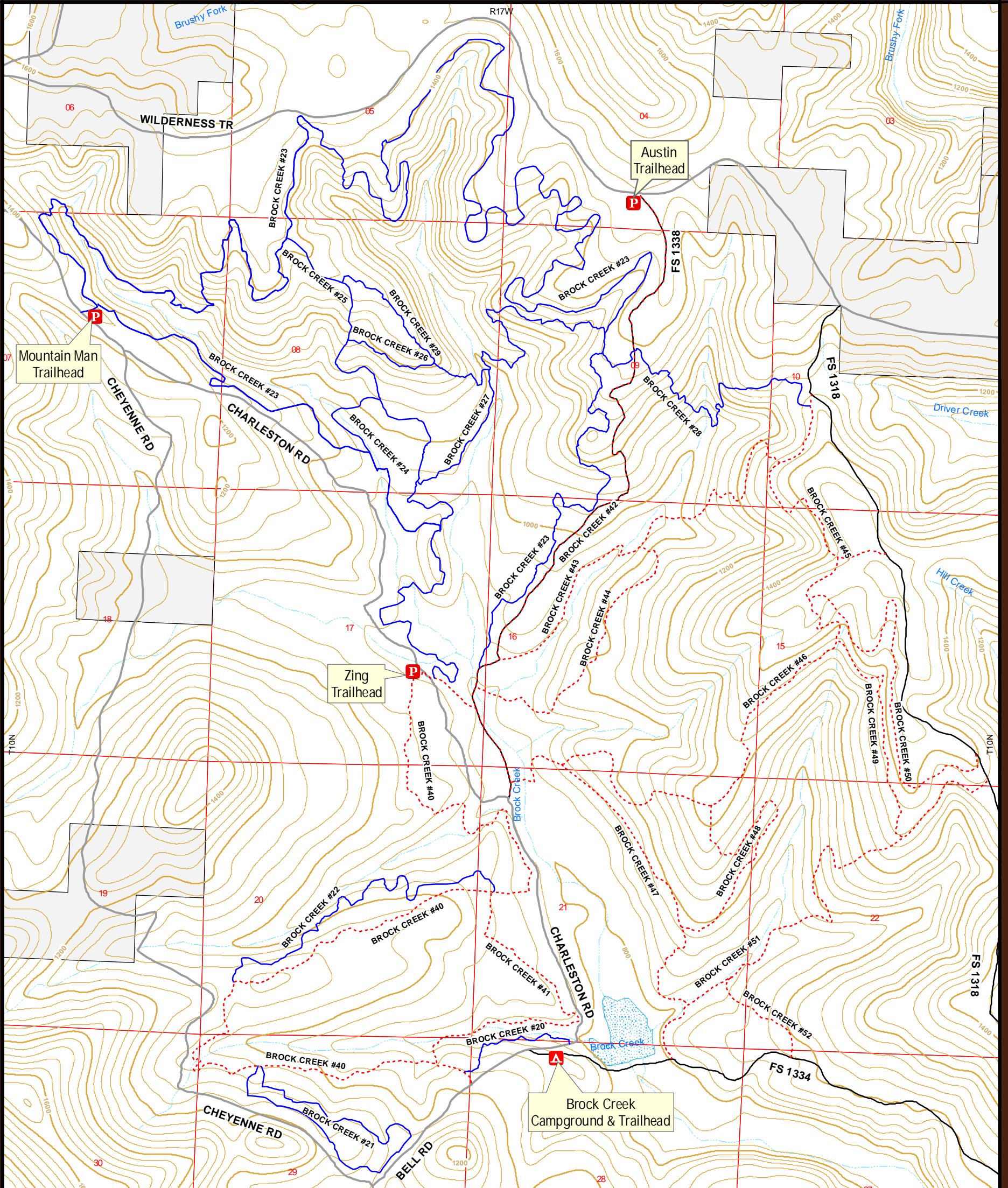
605 W. Main Street, Russellville, AR 72801 479-964-7200



Brock Creek Trail

Ozark - St. Francis National Forests

Big Piney Ranger District



	Campground		County Road
	Trailheads		Forest Service Road
	OHV Trails		Private Land
	Single Track Trails		Brock Creek Lake

The U.S. Forest Service uses the most current and complete data available. GIS data and product accuracy may vary. They may be developed from sources of differing accuracy, accurate only at certain scales, based on modeling or interpolation, incomplete while being created or revised, etc. Using GIS products for purposes other than those for which they were created may yield inaccurate or misleading results. The U.S. Forest Service reserves the right to correct, update, modify, or replace GIS products without notification. For further information, contact:

Ozark - St. Francis National Forests
Big Piney Ranger District
12000SR 27
Hector, AR 72843
479-284-3150

Scale: 1:24,000
Contour Interval 40 Feet

"The USDA is an equal opportunity provider and employer."

