

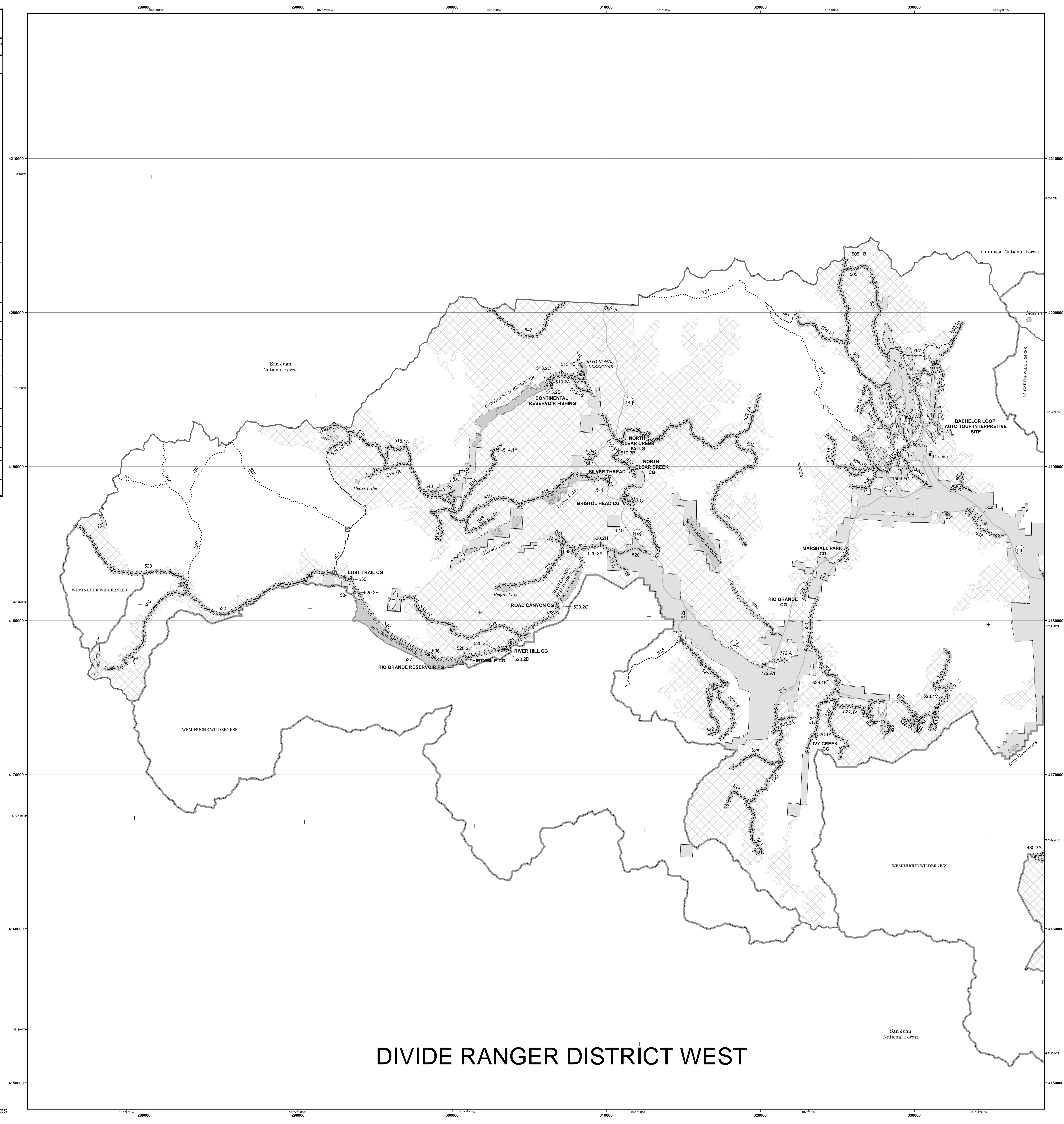
Seasonal Designations				
Route Number	Legend	Dates Allowed	Beginning Mile Post	Ending Mile Post
14	Roads open to Highway Legal Vehicles Only, with Seasonal Designation	05/16-03/14	0.00	11.70
14	Roads open to all Vehicles, with Seasonal Designation	05/16-03/14	11.70	27.12
264, 264.2A, 264.2B, 265.1A, 265.2B, 265.2C, 267, 268, 269, 270, 271, 271.2A, 271.2B, 271.2C, 271.2D, 327, 329, 329.1C, 329.1D, 330, 330.3A, 331, 332, 332.1D, 333, 334, 335, 335.1B, 336, 339, 340, 340.1E, 341, 342, 345, 350, 350.1A, 350.2B, 355, 355.1A, 355.1C, 355.2A, 355.3A, 359, 360.3C, 360.4A, 360.4B, 360.4C, 360.4D, 361, 374, 375, 376, 377, 377.1A, 380, 380.2B, 380.2C, 380.3A, 380.3C, 380.5A, 380.5C, 381, 383, 384, 385, 386, 387, 388, 390, 391, 391.2B, 401, 402, 402.1A, 403, 410, 413, 413.1, 413.1A, 430, 430.3A, 430.3B, 430.3C, 430.5B, 432, 433, 438	Roads open to all Vehicles, with Seasonal Designation	05/16-03/14	Entire	Length
500, 501, 502.1A, 503, 504.1A, 504.1B, 504.1C, 504.1D, 504.1E, 505, 505.1A, 505.1B, 506, 507, 508, 508.1A, 508.1B, 509, 510, 510.1A, 510.3A, 510.3A.1, 511, 511.1A, 512, 513, 513.1A, 513.1B, 513.1C, 513.2A, 513.2B, 513.2C, 514, 514.1E, 515, 516, 516.1A, 517, 518, 518.1A, 518.1B, 518.1C, 520, 520.1G, 520.2A, 520.2B, 520.2C, 520.2D, 520.2E, 520.2F, 520.2G, 520.2H, 520.2I, 520.3G, 520.4G, 521, 523, 523.5A, 524, 525, 526, 526.1A, 527, 527.1A, 528, 528.1A, 528.1F, 528.1G, 528.1H, 528.1I, 528.1V, 528.1Z, 529, 530, 532, 532.2A, 533, 533.1V, 534, 535, 536, 537, 538, 541, 542, 543, 547, 548, 551, 552, 553, 555, 556, 600, 600.3A, 601, 602, 603, 603.1A, 609, 610, 611, 611.1E, 612, 613, 614, 615, 616, 617, 630.2A, 630.2C, 630.5B, 640, 640.1A, 640.3B, 640.4B, 644, 644.1A, 645, 646, 646.1C, 648, 649, 650, 655, 659, 661, 662, 665, 667, 670.2A, 671, 671.1A, 672, 673, 675, 676, 678, 680, 680.2A, 680.2B, 684, 685, 690.2A, 729, 744, 772.A, 772.A.1	Roads open to all Vehicles, with Seasonal Designation	05/16-03/14	Entire	Length
28	Roads open to Highway Legal Vehicles Only, with Seasonal Designation	05/16-03/14	0.00	13.00
28	Roads open to all Vehicles, with Seasonal Designation	05/16-03/14	13.00	21.65
360	Roads open to Highway Legal Vehicles Only, with Seasonal Designation	05/16-03/14	0.00	3.91
360	Roads open to all Vehicles, with Seasonal Designation	05/16-03/14	3.91	16.64
502	Roads open to Highway Legal Vehicles Only, with Seasonal Designation	05/16-03/14	0.00	0.17
502	Roads open to all Vehicles, with Seasonal Designation	05/16-03/14	0.17	5.60
630	Roads open to Highway Legal Vehicles Only, with Seasonal Designation	05/16-03/14	0.00	0.93
630	Roads open to all Vehicles, with Seasonal Designation	05/16-03/14	0.93	21.26
650	Roads open to Highway Legal Vehicles Only, with Seasonal Designation	05/16-03/14	0.00	4.85
650	Roads open to all Vehicles, with Seasonal Designation	05/16-03/14	4.85	28.40
660	Roads open to Highway Legal Vehicles Only, with Seasonal Designation	05/16-03/14	0.00	5.00
660	Roads open to all Vehicles, with Seasonal Designation	05/16-03/14	5.00	12.20
670	Roads open to Highway Legal Vehicles Only, with Seasonal Designation	05/16-03/14	0.00	4.10
280	Roads open to all Vehicles, with Seasonal Designation	06/01-02/29	Entire	Length

Dispersed Camping

Motor vehicle use off of designated roads for the purpose of dispersed camping is permitted for up to 300 feet from the centerline of the road, allowing the same vehicles as the road allows and the same season as the road is open. This applies to the following roads:

14, 28, 264, 264.2A, 264.2B, 265.1A, 265.2B, 265.2C, 267, 268, 269, 270, 271, 271.2A, 271.2B, 271.2C, 271.2D, 280, 327, 329, 329.1C, 329.1D, 330, 330.3A, 331, 332, 332.1D, 333, 334, 335, 335.1B, 336, 339, 340, 340.1E, 341, 342, 345, 350, 350.1A, 350.2B, 355, 355.1A, 355.1C, 359, 360, 360.3C, 360.4C, 360.4D, 361, 374, 375, 376, 377, 377.1A, 380, 380.2B, 380.2C, 380.3A, 380.3C, 380.5A, 380.5C, 381, 383, 384, 385, 386, 387, 388, 390, 391, 391.1B, 401, 402, 402.1A, 403, 404, 430, 430.3A, 430.3B, 430.5B, 432, 433, 438,

500, 501, 502.1A, 502, 503, 503.1A, 504.1A, 504.1B, 504.1C, 504.1D, 504.1E, 505, 505.1A, 505.1B, 506, 507, 508, 508.1A, 508.1B, 509, 510, 510.1A, 510.3B, 511, 512, 513, 513.1A, 513.1B, 513.1C, 513.2A, 513.2B, 513.2C, 514, 514.1E, 515, 516, 516.1A, 517, 518, 518.1A, 518.1B, 518.1C, 519, 520, 520.1G, 520.2A, 520.2B, 520.2C, 520.2D, 520.2E, 520.2G, 520.2H, 520.2I, 521, 522, 522.1F, 523, 523.5A, 524, 525, 526, 526.1A, 527, 527.1A, 528, 528.1A, 528.1F, 528.1G, 528.1U, 528.1V, 528.1Z, 529, 530, 531, 532, 532.2A, 533, 533.1V, 534, 535, 536, 537, 538, 541, 542, 543, 547, 548, 551, 552, 553, 555, 556, 600, 600.3A, 601, 602, 603, 609, 610, 610.3B, 611, 611.1E, 612, 613, 614, 615, 616, 617, 618, 630, 630.2A, 630.2C, 630.5B, 640, 640.1A, 640.3B, 640.4B, 644, 644.1A, 645, 646, 646.1C, 648, 649, 650, 655, 659, 660, 661, 662, 665, 667, 670.2A, 670, 670.2B, 671, 672, 673, 675, 676, 678, 680, 680.2A, 680.2B, 684, 685, 690.2A, 729, 744, 772.A, 772.A.1



DIVIDE RANGER DISTRICT WEST

