

NIOSH ALERT

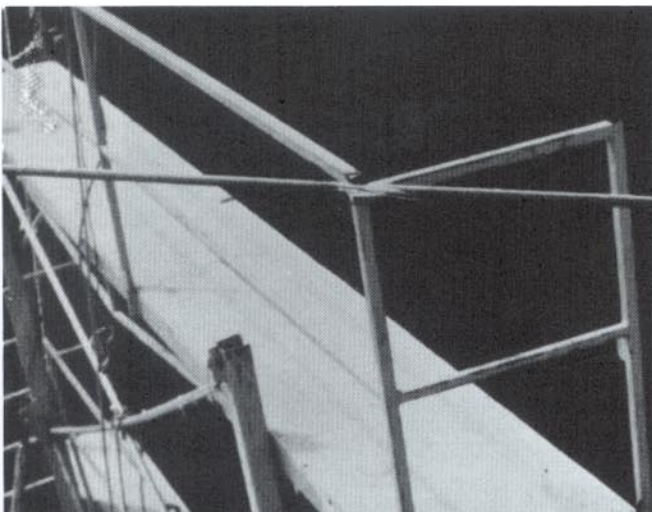
Scaffolds Near Overhead Power Lines

WARNING!

Workers may be electrocuted when erecting, moving, or working from metal or conductive scaffolds near overhead power lines.

Take the following actions to protect yourself if you are erecting, moving, or working from metal or conductive scaffolds near overhead power lines.

- Be aware of overhead power lines in your work area. **Most overhead power lines are not insulated.**
 - Conduct initial and daily surveys of the worksite and implement control measures and training to address hazards at the site.
 - Recognize the hazards of moving, erecting, or working from scaffolds near overhead power lines.
 - Restrict the use of electrically conductive tools or materials where they may contact overhead power lines.
 - Be trained in cardiopulmonary resuscitation (CPR).
- **Always** maintain the following minimum clearance between scaffolds and power lines:
 - 2 feet for insulated power lines of less than 300 volts
 - 10 feet for insulated power lines of 300 volts or more and for all uninsulated power lines
 - If scaffolds must be moved in the area of overhead power lines, appoint a competent worker to observe the clearance between the power lines and the scaffold and warn others if the minimum distance is not maintained.
 - If minimum clearance cannot be maintained when scaffolds must be erected or moved near overhead power lines, notify the utility company to de-energize the power lines or provide adequate insulation before any work is initiated.



Metal scaffold contacting an overhead power line.

For additional information, refer to the NIOSH Alert on Scaffolds Near Overhead Power Lines [DHHS (NIOSH) 91-110], or call 1-800-35-NIOSH. Single copies are available free from the following:

Publications Dissemination, DSDTT
National Institute for Occupational Safety
and Health
4676 Columbia Parkway
Cincinnati, OH 45226
(513) 533-8287



U.S. Department of Health and Human Services
Public Health Service
Centers for Disease Control
National Institute for Occupational Safety
and Health