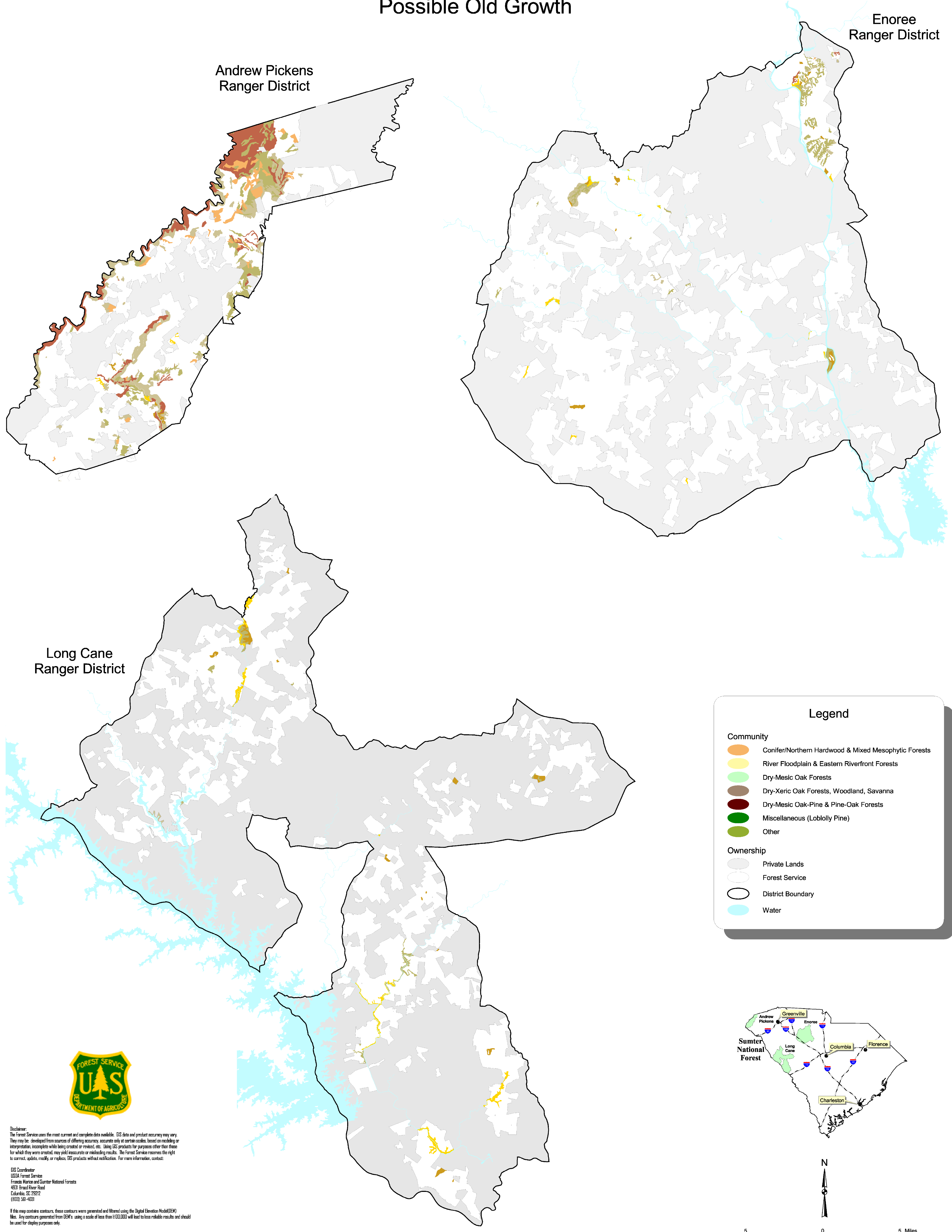


Sumter National Forest Possible Old Growth



Andrew Pickens
Ranger District

Enoree
Ranger District

Long Cane
Ranger District

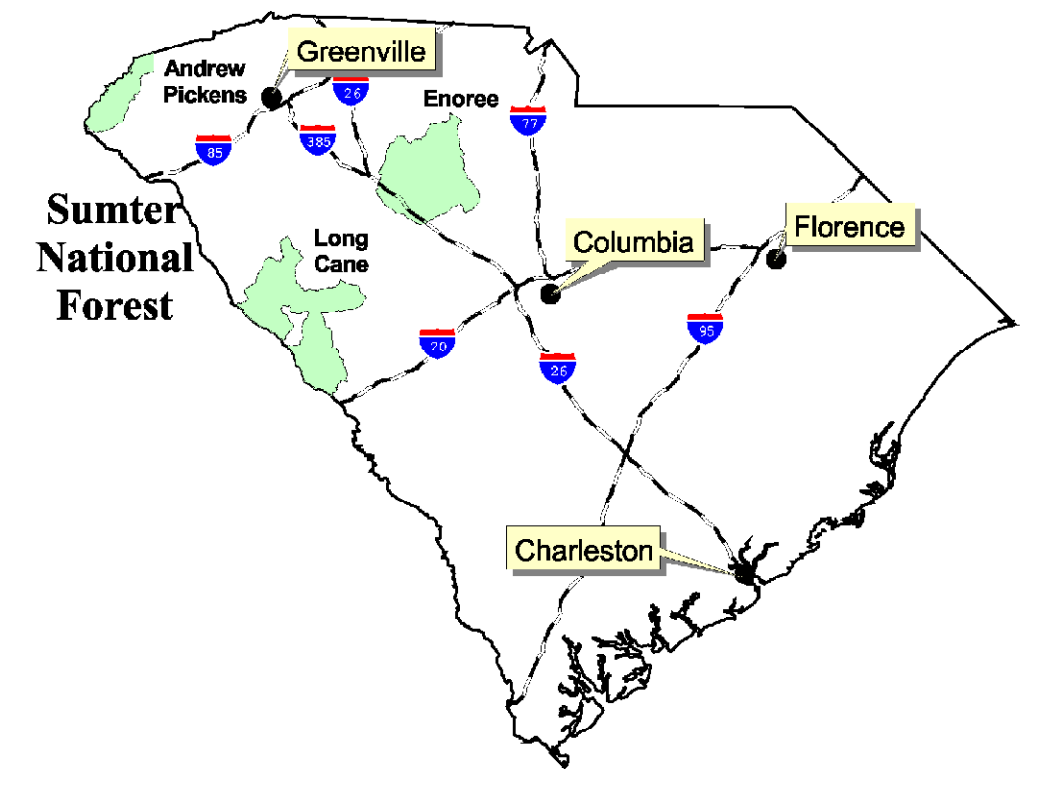
Legend

Community

- Conifer/Northern Hardwood & Mixed Mesophytic Forests
- River Floodplain & Eastern Riverfront Forests
- Dry-Mesic Oak Forests
- Dry-Xeric Oak Forests, Woodland, Savanna
- Dry-Mesic Oak-Pine & Pine-Oak Forests
- Miscellaneous (Loblolly Pine)
- Other

Ownership

- Private Lands
- Forest Service
- District Boundary
- Water



Disclaimer: The Forest Service uses the most current and complete data available. GIS data and product accuracy may vary. They may be developed from sources of differing accuracy, accurate only at certain scales, based on modeling or interpretation, incomplete with being created or revised, etc. Using GIS products for purposes other than those for which they were created, may yield inaccurate or misleading results. The Forest Service reserves the right to correct, update, modify, or replace GIS products without notification. For more information, contact:

GIS Coordinator
USDA Forest Service
Francis Marion and Sumter National Forests
453 Broad River Road
Columbia, SC 29212
(803) 581-4051

If this map contains contours, these contours were generated and thinned using the Digital Elevation Model (DEM). Note: Any contours generated from DEM's using a scale of less than 1:50,000 will tend to lose reliable results and should be used for display purposes only.