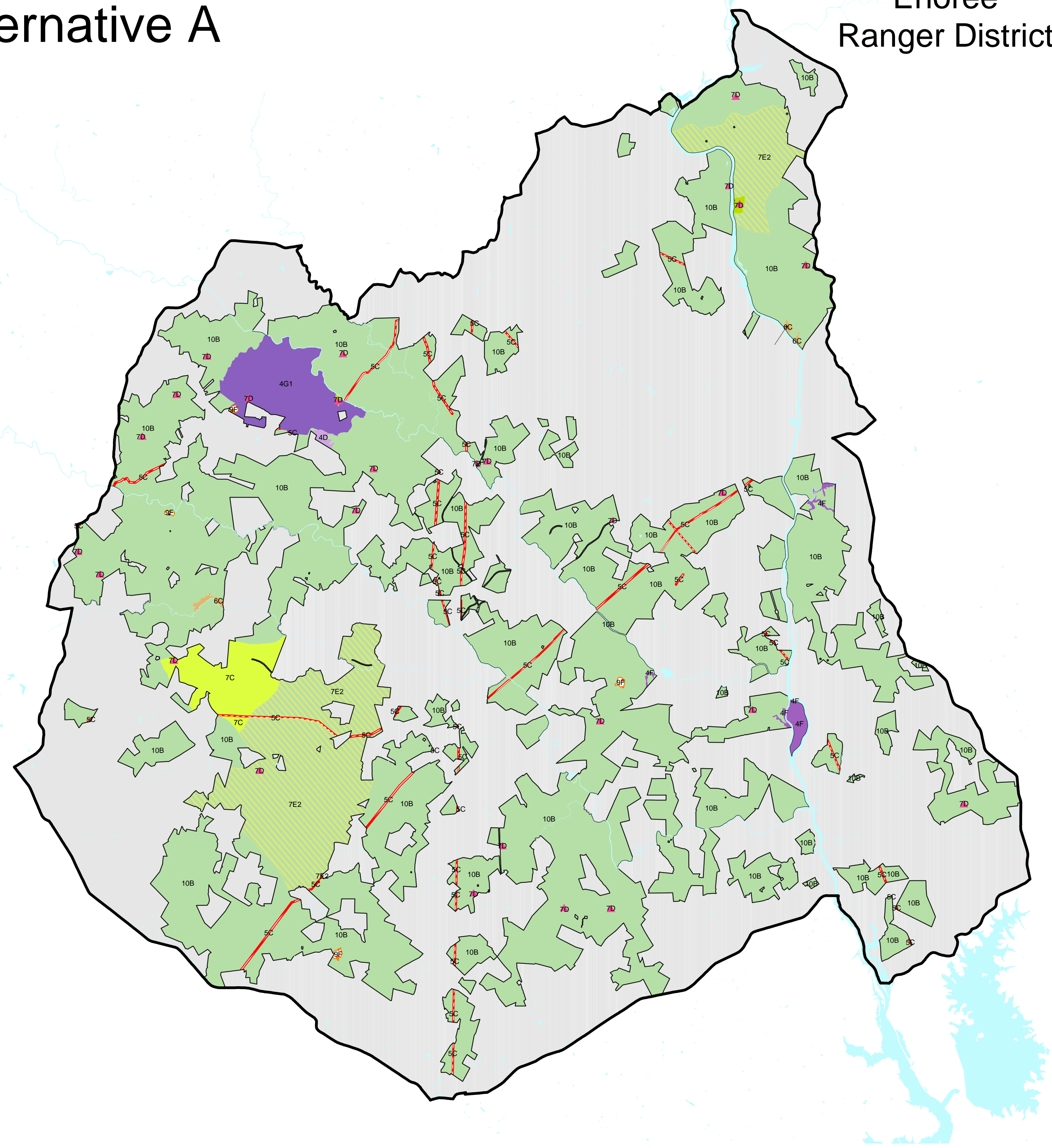
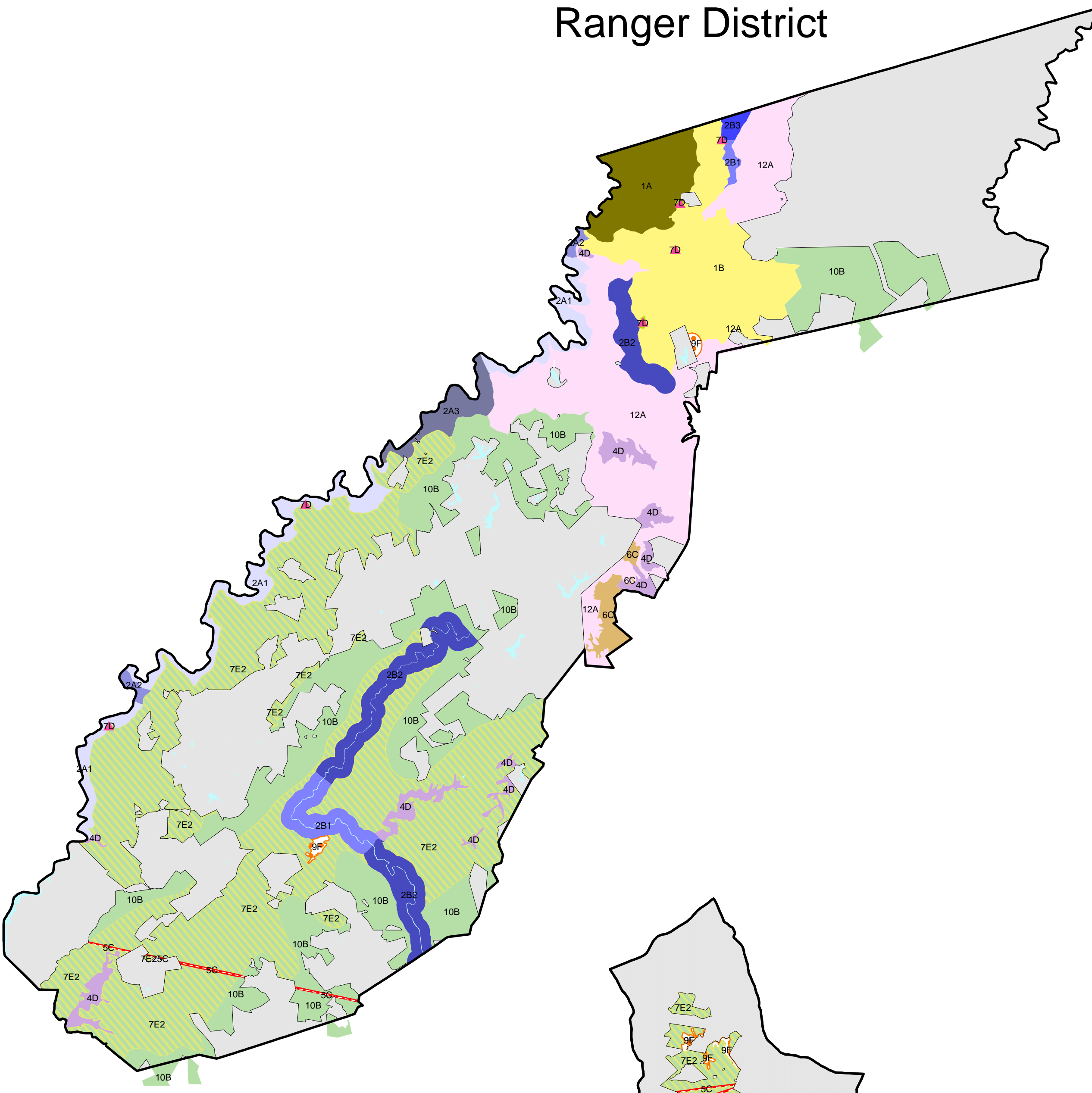


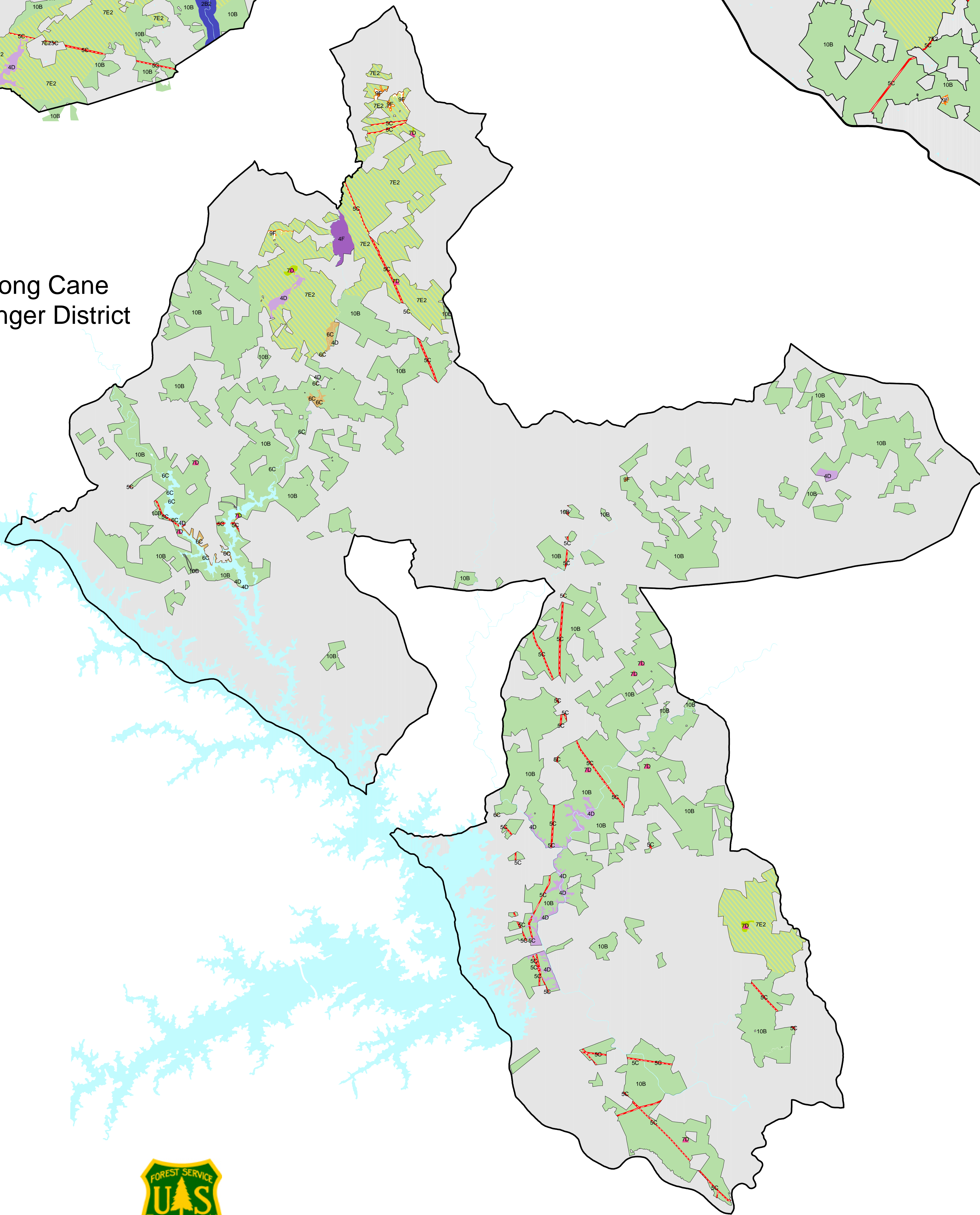
Sumter National Forest Alternative A

Enoree
Ranger District

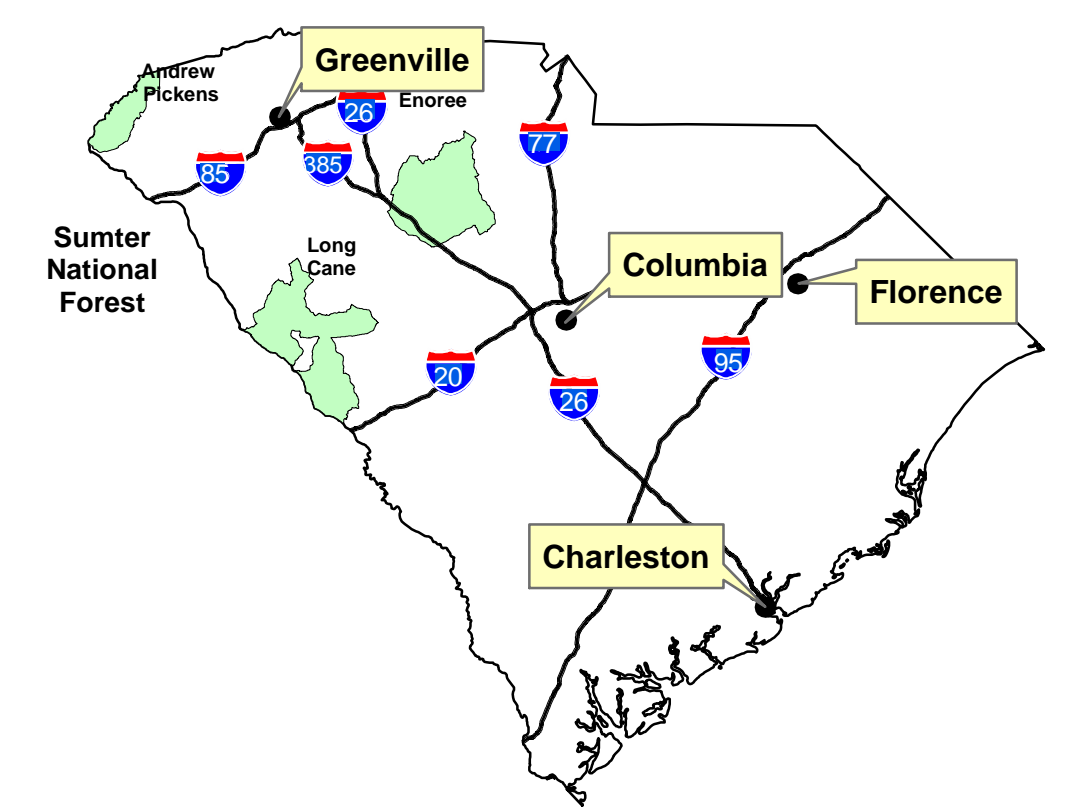
Andrew Pickens
Ranger District



Long Cane
Ranger District



- Legend**
- 1.A - Designated Wilderness Area
 - 1.B - Recommended Wilderness Study Area
 - 2.A.1 - Designated Wild River Segments
 - 2.A.2 - Designated Scenic River Segments
 - 2.A.3 - Designated Recreational River Segments
 - 2.B.1 - Eligible Wild and Scenic Wild River Segments
 - 2.B.2 - Eligible Wild and Scenic Scenic River Segments
 - 2.B.3 - Eligible Wild and Scenic Recreational River Segments
 - 4.D - Biological/Zoological Areas (All areas not shown)
 - 4.F - Scenic Areas
 - 4.G.1 - Calhoun Experimental Forest
 - 5.A - Administrative Sites
 - 5.C - Designated Utility Corridors
 - 6.A - Emphasize Natural Processes
 - 6.B - Areas Managed to Restore/Maintain Old Growth Characteristics
 - 6.C - Old Growth Areas Managed with a Mix of Natural Processes and Restoration Activities (All areas not shown)
 - 6.D - Old Growth Areas with Core Surrounded by areas with extended forest rotations
 - 6.E - Old Growth Area with Core Surrounded by Areas under Uneven-Aged Management
 - 7.A - Scenic Byway Corridor
 - 7.C - OHV Use Areas
 - 7.D - Concentrated Recreation Zone
 - 7.E - Dispersed Recreation Areas
 - 7.E.2 - Dispersed Recreation Areas with Vegetation Management
 - 8.A.1 - Mix of Successional Forest Habitats
 - 8.A.2 - Area-Sensitive Mid- to Late-Successional Forest Habitats
 - 8.B.2 - Woodland and Grassland Savanna Habitats
 - 8.C - Wide Ranging Area-Sensitive Species (or Black Bear Habitat)
 - 8.D - Red-Cockaded Woodpecker Habitat Management Areas
 - 9.A.3 - Watershed Restoration Area
 - 9.A.4 - Aquatic T/E/S Watersheds
 - 9.E - Maintenance and Restoration of Xeric Pine and Pine-Oak Forests
 - 9.F - Rare Communities (All areas not shown)
 - 9.G.2 - Maintenance and Restoration of Upland Oak-Hickory and Mixed Pine-Oak Forests
 - 9.H - Maintenance and/or Restoration of Plant Associations in the Chattooga River Watershed
 - 10.A - Sustained Yield Timber Management
 - 10.B - High Quality Forest Products
 - 11 - Riparian Corridors
 - 12.A - Remote Backcountry Recreation - Few Roads
 - 12.B - Remote Backcountry Recreation - Non-Motorized
 - Private Lands
 - District boundary
 - Water



Disclaimer:
The Forest Service uses the most current and complete data available. GIS data and product accuracy may vary. They may be developed from sources of differing accuracy, accurate only at certain scales, based on modeling or interpretation, incomplete while being created or revised, etc. Using GIS products for purposes other than those for which they were created, may yield inaccurate or misleading results. The Forest Service reserves the right to correct, update, modify, or replace, GIS products without notification.

