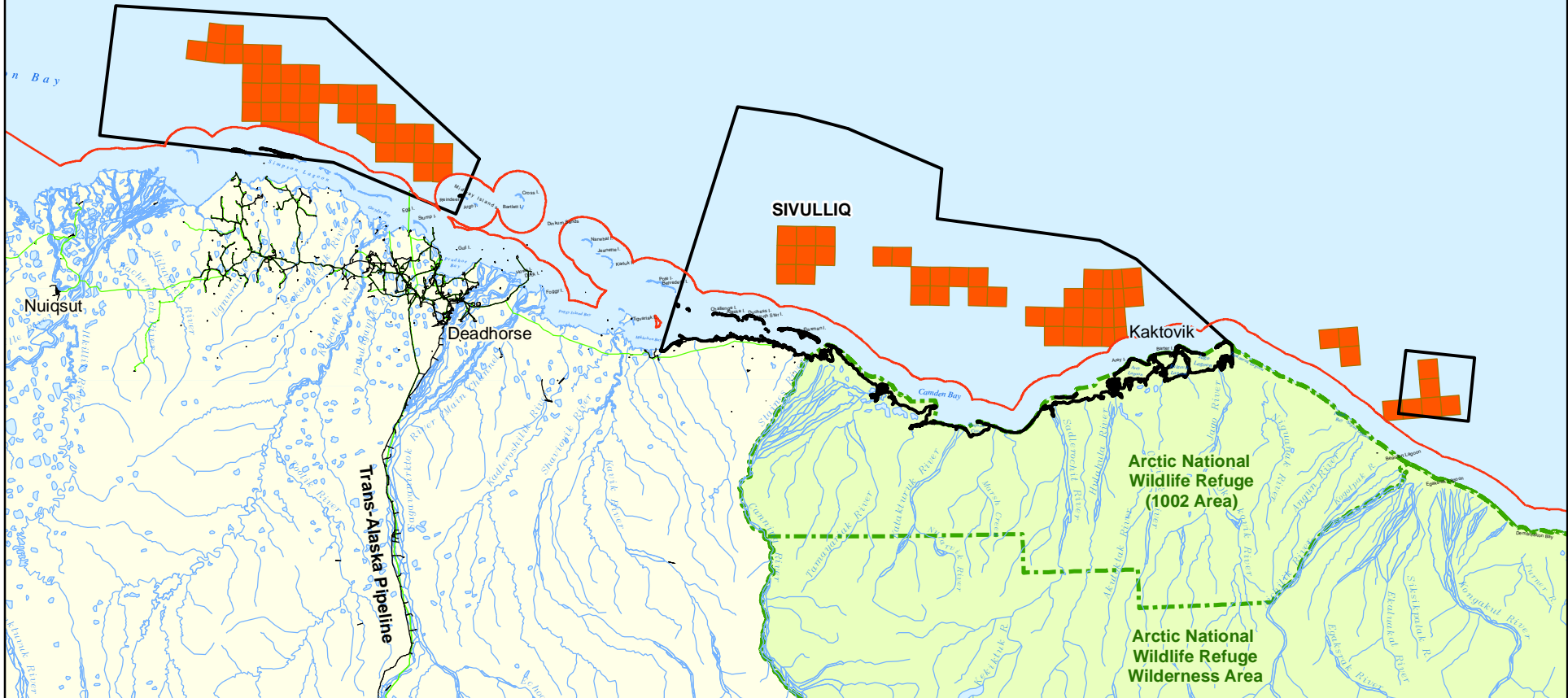
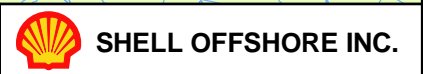


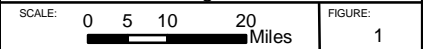
B E A U F O R T S E A



- Marine Survey Permit Area
- Road
- Federal/State Waters Jurisdiction Boundary
- Shell Lease Block
- Pipeline
- National Park System & Wildlife Refuge
- Facility



**LOCATION OF 2007 OPEN WATER PROGRAM ACTIVITIES**  
Outer Continental Shelf and Submerged State Lands



NAD 1983, Alaska State Plane Zone 3 (Feet), Umiat Meridian.  
Oil & Gas Leases accurate as of 02/16/07. Lease data provided by Mapmakers Alaska Inc. (Copyright 2001 Mapmakers Alaska).