



U.S. Department
of Transportation
**Federal Aviation
Administration**

ADMINISTRATOR'S FACT BOOK

March 2003

(Updated quarterly)

Produced by:
Assistant Administrator for Financial Services
Office of Cost and Performance Management
Standards and Information Division

Web site: <http://www.atctraining.faa.gov/factbook>

Table of Contents

FAA Vision and Mission	Inside Front Cover
FAA Values	Inside Back Cover

Safety

Aviation Accidents by Type of Operations	3*
Aviation Accident Rates by Type of Operation	4*
Airspace Incidents by Incident Type	5*
Airspace Incident Rates by Incident Type	6*
NTSB U.S. Transportation Fatalities	7*

FAA Air Traffic

FAA Air Traffic Activity	8*
Air Route Traffic Control Center Activity	9*
50 Busiest FAA Air Traffic Control Towers	10*
50 Busiest Approach Control Facilities	12*
Automated Flight Service Station Activity	14*

Airports

Number of U.S. Airports	16*
National Airspace Systems Delays	17*

Aircraft

U.S. Air Carrier Activity	18
U.S. General Aviation Activity	19*
Aircraft Certification Service	20*

Industry Trends

Scheduled U.S. Air Carrier Traffic & Fin. Trends	21*
Aviation Forecasts	22

Airmen

Active Pilots and Nonpilots	23
-----------------------------------	----

FAA Organizational Chart	Center Fold*
--------------------------------	--------------

<i>FAA Regional Boundaries Map</i>	26
--	----

Table of Contents (cont.)

Commercial Space Transportation

AST Licensing and Industry Activity.....	27*
U.S. Commercial Space Launch Schedule.....	28*

FAA Resources

FAA Employment	29*
FAA Percent Minority and Women Employment	30*
FAA Major Work Force Employment	31*
Labor Relations	32*
FAA Finances.....	33*
FAA Facilities and Aircraft.....	34*

Organization

FAA Officials--Washington Headquarters	35*
FAA Officials--Major Field Organizations	38*
FAA Officials--International Offices.....	40*
FAA Strategic Goals & FY03 Performance Goals	41*

For further information call APF-100 (202-267-9946)

*Updated this issue

Distribution: A-WXYZE-3; A-FOF-O(STD)

Aviation Accidents by Type of Operation

Type of Operation	Year	Jan	Feb	Mar	Apr	May	Jun	Jul	Aug	Sep	Oct	Nov	Dec	Year Total
Large Air Carrier	2001	1	4	5	4	3	2	3	6	7	4	4	2	45
	2002	3	3	6	5	3	6	4	1	2	2	4	0	39
Commuter	2001	1	0	0	1	1	0	1	1	0	2	0	0	7
	2002	0	0	2	0	1	1	2	1	2	0	0	0	9
Air Taxi	2001	7	5	6	6	7	6	8	9	5	6	1	6	72
	2002	5	5	7	1	4	7	8	6	4	5	2	5	59
General Aviation	2001	104	106	121	146	156	192	244	206	118	123	120	87	1,723
	2002	94	92	115	136	164	210	206	203	162	122	116	83	1,703
Rotorcraft*	2001	11	15	18	9	15	17	25	21	18	11	14	7	181
	2002	13	11	16	15	21	29	23	19	21	12	14	11	205

* Part 135 and US registered general aviation rotorcraft accidents.

Sep 2001 does include the 4 aircraft destroyed in the terrorist attacks of Sep. 11th

Note: Preliminary data and subject to change.

As of: 12/31/02

Source: AAI-200

(202) 267-3279

Aviation Accident Rates by Type of Operation

Type of Operation	1998		1999		2000		2001		% Chg 01-00	
	Number	Rate	Number	Rate	Number	Rate	Number	Rate	Number	Rate
Large Air Carriers.....	50	.29	52	.29	57	.31	40	.21	-30%	-32%
Commuter.....	8	2.26	13	3.79	12	3.21	7	2.11	-42%	-34%
Air Taxi.....	77	2.03	73	2.21	81	2.28	72	2.12	-11%	-7%
General Aviation.....	1,904	7.45	1,906	6.41	1,838	6.33	1,721	6.56	-6%	4%

Accident Rates are per 100,000 Flight Hours

Rotorcraft rates discontinued, currently under review

Note: Preliminary data and subject to change.

As of: 3/26/02

Source: AAI-200

(202) 267-3279

Airspace Incidents by Incident Type

Incident Type	Year	Jan	Feb	Mar	Apr	May	Jun	Jul	Aug	Sep	Oct	Nov	Dec	Year Total
Near Midair Collisions	2001	16	17	19	14	29	28	15	20	17	13	11	12	211
	2002	14	11	12	16	15	19	22	15	17	18	15	6	180
Pilot Deviations	2001	116	112	148	142	183	154	146	176	167	227	271	134	1,976
	2002	137	128	142	168	153	175	174	174	192	154	183	164	1,944
Operational Errors	2001	69	82	111	101	112	108	122	130	87	104	91	66	1,183
	2002	87	66	109	110	93	87	86	84	78	99	80	66	1,045
Vehicle Pedestrian Deviations	2001	38	37	30	49	37	37	53	41	42	41	32	21	458
	2002	28	29	31	40	38	27	28	29	43	24	25	16	358
Surface Incidents	2001	94	101	103	111	124	123	107	119	98	116	95	59	1,250
	2002	62	68	87	90	121	102	83	88	100	61	82	65	1,009
Runway Incursions*	2001	24	33	39	35	37	42	37	31	23	39	25	18	383
	2002	14	18	31	27	46	30	23	32	35	26	28	26	336

Note: Preliminary data and subject to change.

Source: ATX-400

(202) 385-4802

*ATS

(202) 385-4788

As of: 01/08/03

*As of: 12/31/02

Airspace Incident Rates by Incident Type

Incident Type									Percent Change	
	1999		2000		2001		2002		2001 - 2002 (4)	
	Number	Rate	Number	Rate	Number	Rate	Number	Rate	Number	Rate
Operational Errors (1).....	992	.60	1,138	.69	1,183	.74	1,045	.66	-12%	-11%
Pilot Deviations (2).....	1,629	.99	1,900	1.15	1,976	1.20	1,944	1.18	-2%	-2%
Surface Incidents (3).....	1,048	1.53	1,391	2.06	1,250	1.91	1,009	1.55	-19%	-19%

(1) Per 100,000 Facility Activities

(2) Per 100,000 Flight Hours

(3) Per 1,000,000 Airport Operations

(4) Calculations use fifteen decimal places for rates (rounded two places for display).

Note: 2002 data preliminary and subject to change.

As of: 01/08/03

Source: ATX-400

(202) 385-4802

National Transportation Safety Board

2001-2000 U.S. Transportation Fatalities

	2001 ¹	2000
Highway		
Passenger cars.....	20,269	20,492
Light Trucks and Vans.....	11,564	11,418
Pedestrians.....	4,698	4,739
Motorcycles.....	3,067	2,862
Pedalcycles ²	701	690
Medium and heavy trucks.....	696	741
Buses.....	N/A	22
All Other ³	735	857
Total.....	41,730	41,821
Grade Crossings⁴	(418)	(425)
Rail		
Intercity ⁵		
Trespassers and nontrespassers ⁶	591	544
Employees and contractors.....	26	28
Passengers on trains.....	3	4
Transit ⁷		
Light, heavy, and commuter rail.....	175	194
Total.....	795	770
Marine		
Recreational Boating.....	700	701
Cargo Transport.....	21	36
Commercial fishing.. ⁸	23	41
Commercial Passengers.....	23	23
Total.....	767	801
Aviation		
General Aviation.....	553	594
Airlines.. ⁹	531	92
Air Taxi.....	60	71
Commuter.....	13	5
Foreign/Unregistered.. ¹⁰	5	17
Total.....	1,162	779
Pipeline		
Gas.....	7	37
Liquids.....	0	1
Total.....	7	38
GRAND TOTAL.....	44,461	44,209

¹ 2001 preliminary estimates. Aviation data from NTSB; all other from DOT. ² Includes bicycles or other cycles. ³ Includes vehicle occupant fatalities in vehicle types; ex. farm or construction equipment. ⁴ Grade crossing fatalities not counted separately for determining the grand totals because they are included in the highway and rail categories, as appropriate. ⁵ Data reported to Federal Rail Administration (FRA). ⁶ includes persons on railroad property with and without permission. Does not include motor vehicle occupants killed at grade crossings. ⁷ Data reported to the FTA. Fatalities for commuter rail operations may also be reported to the FRA and may be included in the intercity railroad fatalities. ⁸ Refers to only operational fatalities. ⁹ Of the 531 airline fatalities in 2001, 265 occurred aboard the four hijacked airplanes on September 11, 2001. ¹⁰ Includes non-U.S. registered aircraft involved in accidents in the U.S.

Air Traffic

FAA Air Traffic Activity (In Thousands)

Aircraft Handled by	Jan-Dec	Jan-Dec
FAA ARTCC's	2002*	2,001
Air Carrier.....	23,143	24,017
Air Taxi.....	8,878	8,408
General Aviation.....	8,147	8,004
Military.....	3,949	3,984
TOTAL....	44,117	44,413

Airport Operations

Logged by FAA Towers

Air Carrier.....	13,101	13,965
Air Taxi.....	9,599	9,266
General Aviation.....	23,918	24,447
Military.....	1,989	2,020
TOTAL....	48,607	49,698

Instrument Operations

Logged by FAA Towers

Air Carrier.....	14,408	15,259
Air Taxi.....	11,649	11,359
General Aviation.....	19,190	19,358
Military.....	3,425	3,542
TOTAL....	48,672	49,518

Flight Services

Logged by: **

Flight Service Stations.....	909	946
Automated Flight Service Stations.....	27,696	28,953
TOTAL....	28,605	29,899

*Preliminary
As of: 12/31/02

Source: APO-130
(202) 267-3350

**Source: ATX-400
(202) 385-4734

Air Route Traffic Control Center Activity

CY 2001 Rank	Center	Aircraft Handled (000's)	
		Jan-Dec 2002*	Jan-Dec 2001
1	Cleveland, OH.....	3,027	3,066
2	Atlanta, GA.....	2,926	2,910
3	Chicago, IL.....	2,856	2,820
4	New York, NY.....	2,797	2,807
5	Washington, DC.....	2,574	2,684
6	Indianapolis, IN.....	2,675	2,581
7	Miami, FL.....	2,183	2,191
8	Memphis, TN.....	2,200	2,179
9	Kansas City, KS.....	2,132	2,146
10	Jacksonville, FL.....	2,206	2,140
11	Fort Worth, TX.....	2,111	2,138
12	Los Angeles, CA.....	2,023	2,097
13	Minneapolis, MN.....	2,063	2,052
14	Houston, TX.....	1,971	2,022
15	Boston, MA.....	1,798	1,864
16	Albuquerque, NM.....	1,738	1,780
17	Denver, CO.....	1,701	1,682
18	Oakland, CA.....	1,606	1,648
19	Salt Lake City, UT.....	1,526	1,526
20	Seattle, WA.....	1,281	1,363
21	Anchorage, AK.....	602	589
22	Guam **	120	128

*Preliminary

**Center Radar Approach Control (CERAP)

As of: 12/31/02

Source: APO-130
(202) 267-3350

50 Busiest FAA Airport Traffic Control Towers

CY 2001 Rank	Tower and State	Airport Operations (000's)	
		Jan-Dec 2002*	Jan-Dec 2001
1	Chicago/O'Hare Int'l., IL.....	923	912
2	Atlanta International, GA.....	891	887
3	Dallas/Ft. Worth Int'l., TX.....	777	803
4	Los Angeles Int'l, CA.....	645	739
5	Phoenix Sky Harbor Int'l, AZ.....	590	607
6	Detroit Metro Wayne Co., MI.....	498	523
7	Denver International, CO.....	509	508
8	Minneapolis-St. Paul Int'l, MN.....	507	501
9	Las Vegas/McCarran Int'l, NV.....	498	499
10	Lambert-St. Louis Int'l, MO.....	452	479
11	Houston/G Bush Intercont'l, TX.....	462	477
12	Boston/Logan Int'l, MA.....	405	472
13	Charlotte/Douglas Int'l, NC.....	459	471
14	Miami International, FL.....	446	470
15	Philadelphia Int'l, PA.....	468	467
16	Van Nuys, CA.....	498	457
17	Pittsburgh International, PA.....	425	451
18	Newark International, NJ.....	411	445
19	Washington Dulles Int'l, VA.....	392	424
20	Seattle Tacoma Int'l, WA.....	365	401
21	Orlando/Sanford, FL.....	324	398
22	Metropolitan Oakland Int'l.....	372	396
23	Memphis International, TN.....	398	394
24	San Francisco Int'l, CA.....	351	388
25	Covington/Cincinnati Int'l, KY.....	485	386

*Preliminary

As of: 12/31/02

50 Busiest FAA Airport Traffic Control Towers

CY 2001 Rank	Tower and State	Airport Operations (000's)	
		Jan-Dec 2002*	Jan-Dec 2001
26	Santa Ana/John Wayne, CA.....	376	385
27	Denver/Centennial.....	422	384
28	La Guardia, NY.....	368	377
29	Daytona Beach Int'l, FL.....	355	374
30	Salt Lake City Int'l, UT.....	407	370
31	Long Beach/Daugherty, CA.....	351	359
32	Phoenix-Deer Valley, AZ.....	390	340
33	Honolulu International, HI.....	324	327
34	Orlando International, FL.....	303	326
35	Prescott/E. A. Love Field, AZ.....	339	325
36	Baltimore/Wash. Int'l, MD.....	305	324
37	John F. Kennedy Int'l, NY.....	301	318
38	Anchorage International, AK.....	309	300
39	Portland International, OR.....	278	394
40	Cleveland Hopkins Int'l, OH.....	262	292
41	Seattle/Boeing Field, WA.....	286	291
42	Fort Lauderdale/Hollywood, FL.....	281	290
43	Pontiac/Oakland Co. Int'l, MI.....	278	283
44	Tulsa/Riverside, OK.....	322	281
45	Chicago Midway, IL.....	304	277
46	Raleigh/Durham Int'l, NC.....	240	274
47	Fresno Yosemite Int'l, CA.....	162	274
48	San Jose International, CA.....	223	272
49	Washington National, DC.....	217	270
50	Grand Forks International, FL.....	286	270

50 Busiest Radar Approach Control Facilities

CY 2001 Rank	Facilities/State	Instrument Ops (000s)	
		Jan-Dec 2002*	Jan-Dec 2001
1	Southern Calif. TRACON, CA.....	2,156	2,274
2	New York TRACON, NY.....	1,986	2,019
3	Chicago TRACON, IL.....	1,416	1,382
4	Dallas/Ft Worth, TRACON, TX.....	1,289	1,318
5	Bay TRACON, CA ¹	848	1,041
6	Miami International, FL.....	915	940
7	Atlanta TRACON, GA.....	1,283	859
8	Houston TRACON, TX.....	829	832
9	Phoenix TRACON, AZ.....	773	747
10	Denver TRACON, CO.....	715	705
11	Detroit TRACON, MI.....	689	699
12	Washington Dulles Int'l, VA.....	664	686
13	Philadelphia International, PA.....	692	664
14	Minneapolis TRACON, MN.....	629	660
15	San Juan CERAP, PR.....	587	638
16	St Louis TRACON, MO.....	615	635
17	Las Vegas TRACON, NV.....	608	631
18	Orlando International, FL.....	593	625
19	Boston TRACON, MA.....	557	617
20	Daytona Beach Int'l, FL.....	595	612
21	Charlotte/Douglas Int'l, NC.....	594	597
22	Seattle/Tacoma TRACON, WA.....	542	588
23	Washington National, DC.....	591	586
24	Tampa International, FL.....	559	578
25	Salt Lake City TRACON, UT.....	621	564

* Preliminary ¹Missing 2002 data

Source: APO-130
(202) 267-3350

As of: 12/31/02

50 Busiest Radar Approach Control Facilities

CY 2001 Rank	Facilities/State	Instrument Ops (000's)	
		Jan-Dec 2002*	Jan-Dec 2001
26	Pittsburgh International, PA.....	524	548
27	Baltimore-Washington Int'l, MD.....	513	539
28	Covington/Cincinnati Int'l, KY.....	617	513
29	Memphis International, TN.....	474	480
30	Jacksonville Int'l, FL.....	451	474
31	Sacramento TRACON, CA¹.....	308	461
32	San Antonio Int'l, TX.....	436	433
33	Pensacola TRACON, FL.....	403	424
34	Port Columbus Int'l, OH.....	405	391
35	Palm Beach International, FL.....	356	388
36	Cleveland Hopkins Int'l, OH.....	363	385
37	Yankee TRACON, CT.....	357	376
38	Corpus Christi, TX.....	361	372
39	Portland TRACON, OR.....	339	356
40	Raleigh-Durham Int'l, NC.....	323	355
41	Dayton International, OH.....	357	354
42	Indianapolis Int'l, IN.....	308	340
43	Milwaukee/Gen Mitchell Intl, WI....	337	335
44	Austin, TX.....	328	326
45	Kansas City International, MO.....	321	322
46	Anchorage TRACON, AK.....	327	320
47	Norfolk International, VA.....	309	312
48	Oklahoma City/Will Rogers, OK	315	306
49	Albuquerque International, NM.....	312	304
50	Nashville International, TN.....	305	303

Automated Flight Service Stations Activity

CY 2001 Rank	AFSS/State	Flight Services (000's)	
		Jan-Dec 2002*	Jan-Dec 2001
1	Miami AIFSS, FL.....	1,075	1,266
2	St. Petersburg, FL.....	1,176	1,203
3	Fort Worth, TX.....	818	839
4	Lansing, MI.....	775	818
5	Macon, GA.....	790	762
6	Seattle, WA.....	667	741
7	Prescott, AZ.....	706	739
8	Bridgeport, CT.....	594	738
9	Denver, CO.....	692	697
10	Raleigh, NC.....	640	682
11	Kankakee, IL.....	633	673
12	Princeton, MN.....	613	659
13	Leesburg, VA.....	657	648
14	San Angelo, TX.....	618	624
15	Green Bay, WI.....	547	582
16	San Juan AIFSS, PR.....	396	574
17	Williamsport, PA.....	422	562
18	Millville, NJ.....	537	562
19	Conroe, TX.....	505	528
20	Anniston, AL.....	511	526
21	Terre Haute, IN.....	510	526
22	Columbia, MO.....	487	516
23	Mc Alester, OK.....	518	493
24	Gainesville, FL.....	654	491
25	Oakland AIFSS, CA.....	492	484
26	Anderson, SC.....	444	474
27	Kenai AIFSS, AK.....	459	465
28	Albuquerque, NM.....	428	441
29	St. Louis, MO.....	404	435
30	Cleveland, OH.....	413	433

* Preliminary

Source: ATX-400
(202) 385-4734

Automated International Flight Service Station--AIFSS

As of: 12/31/02

Automated Flight Service Stations Activity

CY 2001 Rank	AFSS/State	Flight Services (000's)	
		Jan-Dec 2002*	Jan-Dec 2001
31	Altoona, PA.....	406	432
32	Hawthorne, CA.....	487	417
33	Reno, NV.....	379	415
34	Rancho Murieta, CA.....	340	411
35	Jonesboro, AR.....	397	405
36	Riverside, CA.....	383	405
37	Wichita, KS.....	355	387
38	Nashville, TN.....	363	386
39	Dayton, OH.....	361	383
40	San Diego, CA.....	343	381
41	Mc Minnville, OR.....	374	380
42	Grand Forks, ND.....	380	355
43	Bangor, ME.....	374	347
44	Cedar City, UT.....	321	342
45	De Ridder, LA.....	326	338
46	Burlington, VT.....	362	333
47	Islip AIFSS, NY.....	352	327
48	Fort Dodge, IA.....	296	309
49	Louisville, KY.....	273	297
50	Buffalo, NY.....	268	285
51	Elkins, WV.....	260	277
52	Honolulu, HI.....	225	263
53	Great Falls, MT.....	227	252
54	Greenwood, MS.....	258	251
55	Columbus, NE.....	225	244
56	Huron, SD.....	237	241
57	Jackson, TN.....	209	227
58	Fairbanks, AK.....	197	213
59	Boise, ID.....	182	204
60	Casper, WY.....	184	200
61	Juneau, AK.....	134	138

Airports

Number of U.S. Airports ¹ (As of December 31)

	2002	2001	2000
Total Airports	19,572	19,356	19,281
Public Use Airports.....	5,286	5,294	5,317
# with Paved Runways.....	3,940	3,947	3,953
# with Unpaved Runways....	1,346	1,347	1,364
# with Lighted Runways.....	4,024	4,034	4,035
# with Unlighted Runways...	1,262	1,260	1,282
Private Use Airports.....	14,286	14,062	13,964
# with Paved Runways.....	4,632	4,555	4,463
# with Unpaved Runways...	9,654	9,507	9,501
# with Lighted Runways.....	1,183	1,118	1,010
# with Unlighted Runways..	13,103	12,944	12,954
Public use airports abandoned...	16	26	13
Private use airports abandoned.	121	220	156
Certificated Airports*	633	635	651
Civil	558	560	563
Military	75	75	88

¹ Includes civil and joint-use civil-military airports, heliports, STOLports, and seaplane bases in the U.S. and its territories.

² Preliminary

* Certificated airports serve Air Carrier Operations with aircraft seating more than 30 passengers. (FAR Part 139).

Source: AAS-330
(202) 267-8752

As of: 12/31/02

National Airspace Total System Delays

Year	Jan	Feb	Mar	Apr	May	Jun	Jul	Aug	Sep	Oct	Nov	Dec	YTD Total
2002*	14,158	13,821	20,020	24,027	28,533	33,770	32,304	29,056	24,493	25,266	17,712	22,489	285,649
2001	27,894	31,599	30,040	30,260	36,460	41,607	40,037	49,423	18,628	13,365	13,249	15,541	348,103
2000	26,015	27,208	32,205	35,332	36,570	50,114	44,430	47,893	43,357	43,794	34,365	29,006	450,289 r/
1999	24,345	19,851	23,180	34,046	39,533	41,602	45,162	37,189	32,833	28,223	23,330	24,822	374,116 r/
1998	27,623	24,855	24,159	22,563	29,187	37,093	25,672	30,549	20,194	23,988	20,439	19,912	306,234 r/

Delays of 15 minutes or longer

r/ Revised

* Preliminary information that is subject to change

Source: ATT-220
(703) 904-4470

As of: 12/31/02

Aircraft

U.S. Air Carrier Activity

	CY 2000	CY 1999	CY 1998
Total Number of Aircraft¹.....	19,399	19,145	18,754
Type of Carrier			
Domestic, flag, supplemental, scheduled, cargo air carriers, and commercial operators.....	7,368	7,094	6,959
Commuter Air Carriers and Air Taxis.....	12,031	12,051	11,795
Total Number of Aircraft¹.....	19,399	19,145	18,754
Type of Aircraft			
Jet.....	7,769	7,270	6,865
Turboprop.....	3,857	3,740	3,535
Piston.....	5,358	5,757	6,065
Rotary Wing.....	2,415	2,378	2,289
Air Carrier Traffic Statistics² (Millions)*		r/	r/
Passenger miles flown.....	708,926	668,626	635,517
Passenger enplanements.....	678	646	625
Ton miles.....	116,096	95,842	91,650
Aircraft miles flown.....	7,039	6,557	6,226
Passenger load factor ³			
Domestic.....	71.2%	69.8%	70.0%
International.....	76.0%	74.4%	72.8%

¹ Source: Vital Information System

² Includes domestic and international scheduled service, of Certificated Route Air Carriers only.

³ Proportion of aircraft seating capacity that is sold.

r/ Revised.

As of: 12/31/01

Source: AFS-40

(202) 267-3433

*BTS (K-25)

(202) 366-8513

U.S. General Aviation and Air Taxi Activity

(Calendar Years)

	Estimated Active Aircraft (thousands)		Estimated Hours Flown (Millions)	
	2001	2000	2001	2000
Total	211.2	217.5	29.1	31.0
By Type Aircraft				
Piston.....	163.3	170.5	20.9	22.2
Turboprop.....	6.6	5.8	1.9	2.0
Jet.....	7.8	7.0	2.7	2.8
Rotary Wing.....	6.8	7.2	2.1	2.3
Other.....	6.5	6.7	0.3	0.4
Experimental.....	20.4	20.4	1.2	1.3
By Type Flying				
Corporate.....	7.8	11.0	2.7	3.8
Business.....	21.6	25.2	3.4	3.6
Personal.....	158.3	148.2	12.4	11.7
Instructional.....	10.5	14.9	4.6	5.4
Aerial Application.....	2.9	4.3	1.0	1.4
Aerial Observation.....	4.6	5.1	1.5	1.6
Aerial Other.....	0.5	1.0	0.2	N/A
External Load.....	0.2	0.2	0.1	0.2
Other Work.....	1.1	1.8	0.3	0.5
Sightseeing.....	0.5	0.9	0.2	0.2
Air Tours.....	0.3	0.3	0.2	0.2
Air Taxi.....	1.9	3.7	2.2	1.7
Air Medical Services...	1.0	1.0	0.4	0.4

N/A = Not Applicable

Source: APO-110

As of: 1/16/03

(202) 267-3103

Aircraft Certification Service

Aircraft Certification Mission and Program Profiles

	FY 2002	FY 2001
Type Certificates/Supplemental Type Certificates Issued.....	830	817
Other Design Approvals Issued.....	5,820	5,900
Production Approvals (Including Amendments) Issued.....	2,678	2,729
Airworthiness Certificates Issued.....	757	619
New Airworthiness Directives (AD) Issued.....	389	529
New Designees (Representative of the Administrator) Appointed.....	1,019	870
Total Active Designees.....	4,813	4,750

As of: 9/30/02

Source: AIR-503
(202) 267-7260

Industry Trends

Scheduled U.S. Air Carrier Traffic and Financial Trends

	2nd Qtr FY 2002	2nd Qtr FY 2001	Numerical Change	Percent Change
TRAFFIC				
ASM'S (in millions)				
Majors.....	587,097	671,727	(84,629)	(12.6)
Nationals.....	50,846	49,529	1,317	2.7
Regionals.....	893	647	246	38.0
Totals.....	638,836	721,902	(83,066)	(11.5)
RPM's (in millions)				
Majors.....	412,037	475,039	(63,002)	(13.3)
Nationals.....	34,273	33,376	897	2.7
Regionals.....	499	344	155	45.0
Totals.....	446,809	508,759	(61,950)	(12.2)
Load Factor (in percent)				
Majors.....	70.2	70.7	(0.5)	
Nationals.....	67.4	67.4	0.0	
Regionals.....	55.8	53.2	2.7	
Totals.....	69.9	70.5	(0.5)	
FINANCIAL				
Revenues (in millions)				
Majors.....	\$69,146	\$86,208	(\$17,062)	(19.8)
Nationals.....	6,551	8,564	(2,013)	(23.5)
Regionals.....	691	681	10	1.4
Totals.....	\$76,388	\$95,453	(\$19,065)	(20.0)
Expenses (in millions)				
Majors.....	\$77,280	\$87,297	(\$10,017)	(11.5)
Nationals.....	6,914	8,573	(1,660)	(19.4)
Regionals.....	689	691	(2)	(0.3)
Totals.....	\$84,882	\$96,561	(\$11,679)	(12.1)
Operating Profit/Loss (in millions)				
Majors.....	\$8,134	\$1,090	(\$7,045)	
Nationals.....	(363)	(10)	(353)	
Regionals.....	2	(10)	12	
Totals.....	(\$8,495)	(\$1,109)	(\$7,386)	

As of: 10/18/02

Source: APO-110
(202) 493-4236

Aviation Forecasts

Actual Forecast
 FY 2001 FY 2005

FAA FACILITY WORKLOAD

Aircraft Handled by FAA ARTCC's (Millions)

Air Carrier.....	24.9	25.2
Air Taxi/Commuter.....	8.3	9.7
General Aviation.....	8.0	8.6
Military.....	4.0	4.1

Operations Logged by FAA Towers (Millions)

Airport.....	66.2	71.5
Instrument.....	50.9	53.3

Flight Services Logged by Flight Services Stations (Millions)

	29.0	30.7
--	------	------

CIVIL AVIATION ACTIVITY

Certificated Route Air Carrier

Revenue Passenger Enplanements (Millions)*.....	649.6	701.0
Revenue Passenger Miles (Billions)*.....	682.2	752.4

Air Carrier Aircraft.....

	5,840	6,771
--	-------	-------

General Aviation Estimated

Hours Flown (Millions)**.....	29.0	29.3
Active Aircraft (Thousands)**.....	216.2	215.7

ESTIMATED FUEL CONSUMED BY U.S. DOMESTIC CIVIL AVIATION (Millions of Gallons)

Jet Fuel

Air Carrier.....	19,864	20,692
General Aviation.....	986	1,174

Aviation Gas

Air Carrier.....	2	2
General Aviation.....	313	326

Active Pilots (Thousands)**.....	649,957	661,975
---	----------------	----------------

** Calendar Year

Source: APO-110
 (202) 493-4236

As of: 3/18/02

Active Pilots and Nonpilots (As of 31 December)

	2001		2000	
	Total	Women	Total	Women
Pilot-Total	612,274	35,776	625,581	36,757
Student.....	86,731	10,230	93,064	10,809
Private.....	243,823	13,894	251,561	14,554
Commercial.....	120,502	5,932	121,858	5,807
Airline Transport.....	144,702	4,630	141,596	4,411
Other ¹	16,516	1,090	17,502	1,176
Nonpilot-Total²	513,100	17,114	547,453	16,552
Mechanic.....	310,850	5,295	344,434	5,047
Repairmen.....	40,085	1,789	38,208	1,704
Ground Instructor.....	72,261	5,169	72,326	5,154
Flight Engineer.....	65,398	2,124	65,098	2,076
Other ³	24,506	2,737	27,387	2,571
Flight Instructor	82,875	5,386	80,931	5,193

¹ Includes helicopter (only) & glider (only), and recreational pilot certificates.

² Excludes non-pilots 70 years old or over in all certificate types except flight engineers and flight navigators.

³ Includes flight navigators, parachute riggers, and dispatchers.

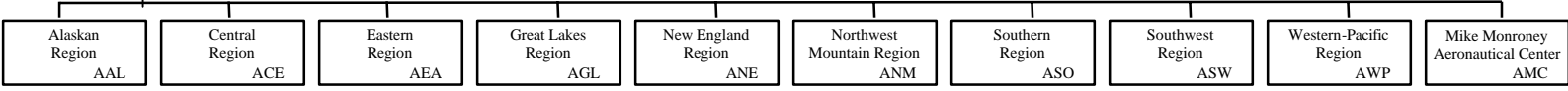
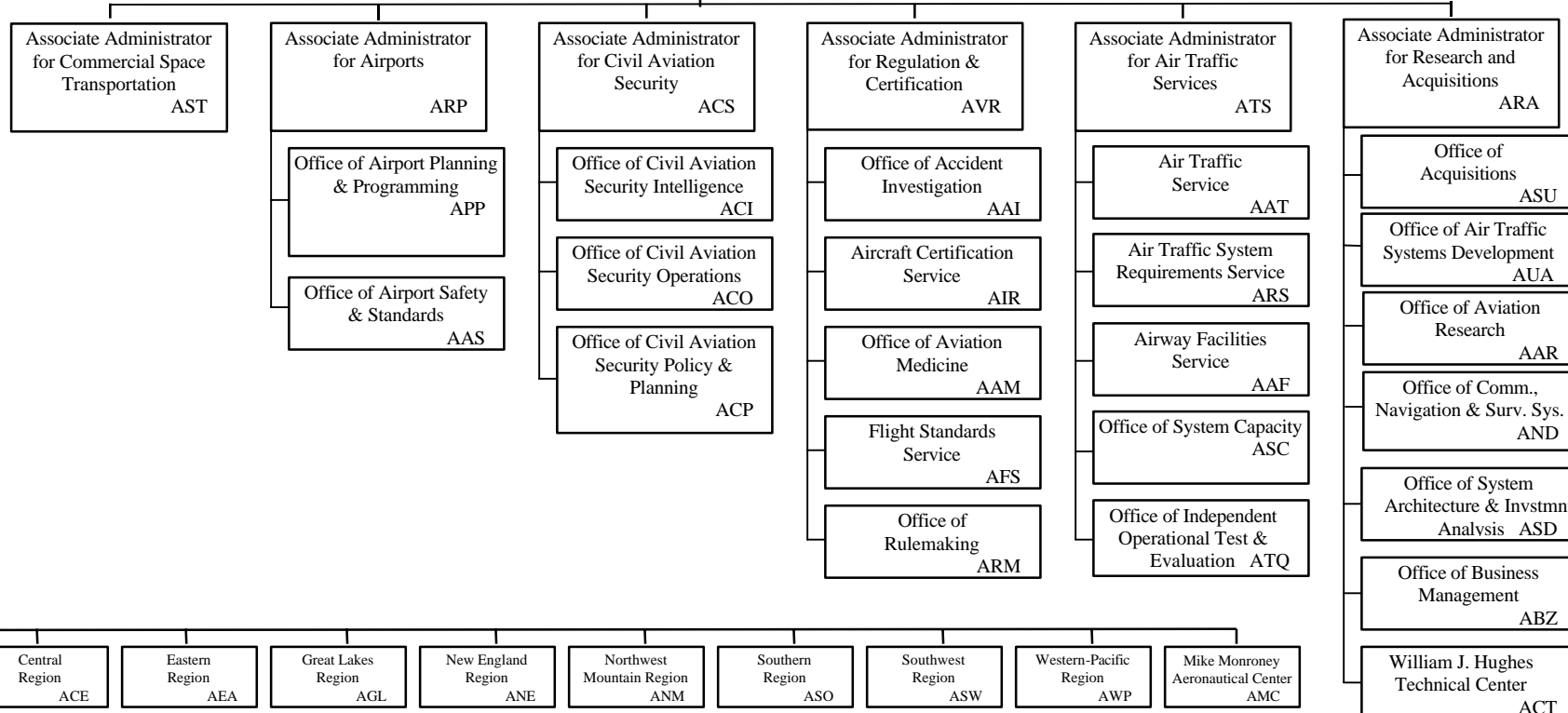
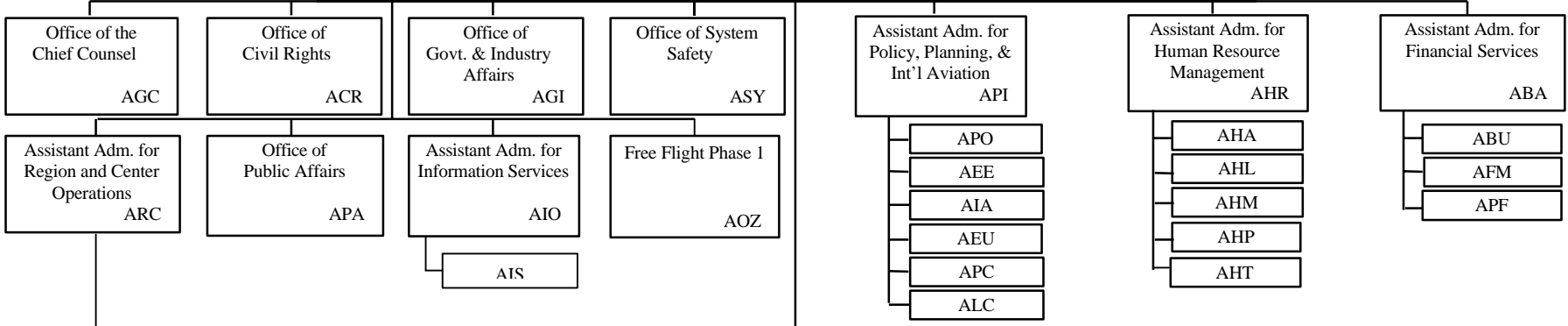
As of 12/31/01

Source: APO-110
(202) 267-3352

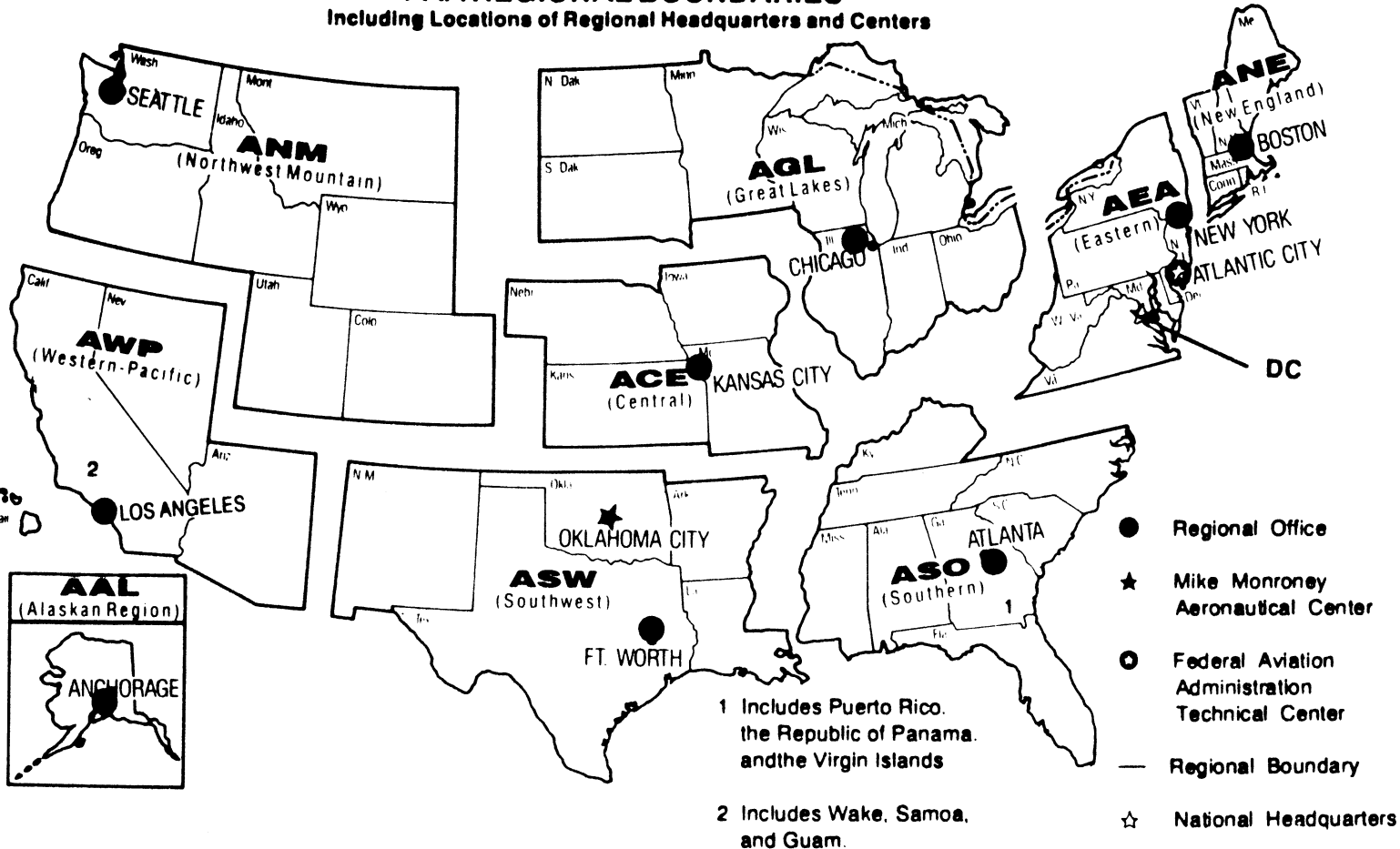
FEDERAL AVIATION ADMINISTRATION

Administrator
AOA

Deputy
Administrator
ADA



**U.S. DEPARTMENT OF TRANSPORTATION
Federal Aviation Administration
FAA REGIONAL BOUNDARIES**
Including Locations of Regional Headquarters and Centers



U.S. Commercial Space Transportation Activity and AST Licensing

	CY 2001	CY 2002	CY 2003 (Projected)
Licensed Commercial Launches			
TOTAL	6	7	10
Number of Orbital Launches	5	6	10
Number of Sub-Orbital Launches	1	1	0
By Launch Vehicle Type			
Delta Family (Boeing Company)	1	2	0
Atlas Family (Lockheed Martin)	1	3	4
Pegasus (Orbital Sciences Corp.)	0	0	1
Taurus (Orbital Sciences Corp.)	1	0	1
Athena 1&2 (Lockheed Martin)	0	0	0
Zenit 3SL (KB Yuzhnoye, Ukraine)	2	1	4
other suborbital	1	1	0
By Launch Site (Federal)			
Cape Canaveral Air Station, FL	1	4	4
Vandenberg AFB, CA	2	1	2
Kwajalein Missile Range	0	0	0
By Launch Site (Commercial)			
California Spaceport	0	0	0
Florida Space Authority	0	0	0
Virginia Space Flight Center	0	0	0
Kodiak Launch Complex (Alaska)	0	0	0
International Sites/Pacific Ocean	3	2	4

Source: AST
(202) 385-4804

As of: 01/27/03

United States Commercial Space Launch Schedule, CY 2003

(launch dates are subject to change)

Payload (Operator)/ Description	Launch Company/ Vehicle	Launch Date/ Launch Site
<i>Hellas-Sat (Greece)</i> Comm. Satellite	Lockheed Martin (International Launch Services, ILS) Atlas V	March Cape Canaveral Air Force Station, FL
<i>Unannounced</i> Comm. Satellite	Sea Launch Zenit 3SL	March Pacific Ocean Platform
<i>Asia Sat 4 (China)</i> Comm. Satellite	Lockheed Martin (International Launch Services, ILS) Atlas IIIB	April Cape Canaveral Air Force Station, FL
<i>Orb View 3 (U.S.)</i> Remote Sensing Satellite	Orbital Sciences Corp. Pegasus XL	April Vandenberg Air Force Base, CA
<i>Rainbow (U.S.)</i> Comm. Satellite	Lockheed Martin (ILS) Atlas V	May Cape Canaveral Air Force Station, FL
<i>Unannounced</i>	Sea Launch Zenit 3SL	2 nd Quarter Pacific Ocean Platform
<i>Thuraya (United Arab Emirates)</i> Comm. Satellite	Sea Launch Zenit 3SL	3 rd Quarter Pacific Ocean Platform
<i>SuperBird 6 (Japan)</i> Comm. Satellite	Lockheed Martin (ILS) Atlas IIAS	September Cape Canaveral Air Force Station, FL
<i>ROCSAT 2 (TAIWAN)</i> Remote Sensing	Orbital Sciences Taurus XL	October Vandenberg Air Force Base, CA
<i>Unannounced</i> Remote Sensing	Sea Launch Zenit 3SL	4 th Quarter Pacific Ocean Platform

As of: 1/24/03

Source: AST
(202) 267-7989

FAA Resources

FAA Employment (Permanent Employees)¹

	FY 02	FY 01 Revised
Line of Business		
Air Traffic Services (ATS).....	36,238	36,349
Regulation and Certification (AVR).....	6,422	6,195
Civil Aviation Security (ACS).....	*	1,221
Airports (ARP).....	461	472
Research and Acquisitions (ARA).....	1,894	1,858
Comm. Space Transportation (AST)....	58	44
Staff Offices.....	3,761	3,762
Total.....	48,853	49,901
Region/Center/Headquarters (included in above total)		
Aeronautical Center.....	1,581	1,582
Alaskan.....	1,399	1,406
Central.....	2,509	2,587
Eastern.....	5,350	5,411
Great Lakes.....	6,474	6,588
New England.....	1,947	1,996
Northwest Mountain.....	4,171	4,224
Southern.....	7,690	7,883
Southwest.....	5,335	5,430
Western-Pacific.....	5,435	5,661
Washington Headquarters (only) ²	3,980	4,109
Washington Headquarters Field ³	1,997	2,055
Technical Center.....	985	969

¹ Full time permanent and part time permanent employees only.

² Washington Headquarters employees physically located in FOB-10A and surrounding areas (i.e. Portals, Market Square, etc.).

³ Washington Headquarters employees physically located in the Field (i.e. Technical Center, Aeronautical Center, etc.)

* ACS transferred to Transportation Security Administration (TSA). The portion of ACS that remained in FAA will be included in FY03.

As of: 09/30/02

Source: APF-100
(202) 267-9946

FAA Percent Minority & Female Employment¹

Lines of Business/Region/Center/Headquarters	% Minority		%Female	
	FY 02	FY 01 r	FY 02	FY 01r
AirTraffic Services (ATS).....	17.2	16.8	19.2	19.1
Regulation and Certification (AVR).....	18.4	17.9	28.5	28.3
Civil Aviation Security (ACS).....	*	27.7	*	42.3
Airports (ARP).....	24.7	23.3	38.8	39.6
Research and Acquisitions (ARA).....	28.7	27.5	37.2	38.2
Commercial Space Transportation (AST).....	48.2	45.4	25.9	31.8
Staff Offices.....	32.2	32.0	54.2	54.0
Total.....	19.0	18.9	22.4	24.3
Aeronautical Center.....	23.9	23.7	44.1	43.4
Alaskan.....	13.7	13.8	23.7	25.3
Central.....	14.1	14.2	24.8	24.7
Eastern.....	15.2	15.4	19.2	19.4
Great Lakes.....	10.7	10.7	20.1	20.6
New England.....	7.3	7.7	20.7	21.0
Northwest Mountain.....	11.9	12.0	22.1	22.7
Southern.....	20.5	20.3	19.6	19.9
Southwest.....	22.0	21.2	20.1	20.6
Western-Pacific.....	28.7	28.6	20.9	20.8
Washington Headquarters (only) ²	33.5	32.5	43.9	45.0
Washington Headquarters Field ³	18.9	18.1	31.8	31.0
Technical Center.....	21.0	20.1	31.8	32.4

¹ Full-time permanent, and part-time permanent employees only (FTE 1111 & 1132).

² Washington Headquarters employees physically located in FOB-10A and surrounding areas (i.e. Portals, Market Square, etc.).

³ Washington Headquarters employees physically located in the Field (i.e. Technical Center, Aeronautical Center, etc.).

* ACS transferred to Transportation Security Administration(TSA). The portion of ACS that remained in FAA will be included in FY03.

r Revised

As of: 09/30/02

Source: APF-100
(202) 267-9946

Major Work Force Employment

	Employment ¹				
	FY02	FY01	FY 00	%Chg. FY02 - FY01	Actual Change
Air Traffic Controller Work Force	17,501	17,389	17,423	0.6%	112
ATCS ² (bargaining unit employees)	15,238	14,997	14,904	1.6%	241
Traffic Management Coordinators ²	654	666	622	-1.8%	-12
Operations Supervisors ²	1,609	1,726	1,897	-6.8%	-117
Flight Service Stations	2,864	2,934	2,976	-2.4%	-70
Field Maintenance (210-211 only)	7,901	8,188	7,830	-3.5%	-287
Security Work Force	*	1,172	1,136	*	*
Airports Work Force	454	461	440	-1.5%	-7
Research & Acquisition Work Force ³	1,958	1,910	1,945	2.5%	48
Aircraft Certification	1,123	1,025	992	9.6%	98
Flight Standards Work Force	4,533	4,476	4,206	1.3%	57

¹ Full time permanent appointments (operations direct).

² Included in Air Traffic Controller Work Force Total.

³ Includes direct operations, F&E, and R,E&D.

* Security Work Force transferred to Transportation Security Administration.

Note: Traffic Management Supervisors (TMS) are no longer included in Controller Work Force.

Source: APF-100
(202) 267-9946

As of: 09/30/02

Labor Relations

	BARGAINING UNITS	LABOR AGREEMENTS	EMPLOYEES REPRESENTED
Unions.....	46	23	38,934
AFGE.....	11	7	1,530
AFSCME (HQ).....	5	0	2,064
LIUNA.....	1	1	171
NAATS.....	1	1	2,257
NAGE.....	3	3	327
NATCA (AT).....	4	3	16,756
NATCA (AF).....	2	1	1,468
NATCA (Other).....	8	0	1,613
NFFE.....	3	2	793
PAACE.....	3	2	402
PASS (AF/AEA).....	1	1	7,619
PASS (AVN).....	1	1	318
PASS (AFS).....	2	1	3,454
PASS (AIR).....	1	0	162

AFGE	--American Federation of Government Employees
AFSCME	--American Federation of State, County, and Municipal Employees
LIUNA	--Laborer's International Union of North America
NAATS	--National Association of Air Traffic Specialists
NAGE	--National Association of Government Employees
NACTA	--National Air Traffic Controllers Association
NFFE	--National Federation of Federal Employees
PAACE	--Professional Association of Aeronautical Center Employees
PASS	--Professional Airway System Specialists

Source: AHL-ZUU
(202) 267-3375

As of: 2/20/03

FAA Finances

(In Millions of Dollars)

	FY 2002 ¹	FY 2003 ^{2/3}	FY 2004 ³
	Actual	Est.	Est.
Budget Authority			
Grants-In-Aid (Obliquation Lim/Approp).....	3,475	3,400	3,400
Research, Engineering, & Development....	245	124	100
Facilities and Equipment.....	3,006	2,981	2,916
Operations.....	7,077	7,077	7,591
Total.....	13,803	13,582	14,007
Obligations Incurred--Operations			
Appropriation by Line of Business			
Air Traffic Services.....	5,477	5,764	6,097
Regulation and Certification.....	767	794	873
Civil Aviation Security.....	170	0	0
Research and Acquisitions.....	194	202	218
Commercial Space Transportation.....	12	12	13
Regions/Center Operations.....	86	89	85
Human Resources.....	69	71	82
Financial Services.....	49	52	50
Staff Offices.....	110	108	143
Emergency Response Fund	215	27	0
Information Services/CIO	0	5	30
Total.....	7,149	7,124	7,591
Airport Grant Obligations (NET)			
Primary Airports & Cargo.....	1,125	1,125	1,061
States/Territories/Insular/Alaska Supp.....	666	669	684
Carryover Entitlements.....	315	250	355
Discretionary Fund.....	1,202	1,192	1,213
Total.....	3,308	3,236	3,313
Total FAA Outlays.....	13,096	13,371	14,162
Trust Fund Receipts from Excise Taxes			
Passenger Ticket Tax.....	4,726	4,655	5,180
Passenger Flight Segment Tax.....	1,532	1,888	2,032
Waybill Tax.....	474	433	461
Fuel Tax	789	748	778
International Departure/Arrival Tax.....	1,282	1,426	1,526
Rural Airports Tax.....	80	75	83
Frequent Flyer Tax.....	148	155	158
Interest on Investment.....	860	708	709
Offsetting Collections.....	178	136	136
Total.....	10,069	10,224	11,063

Numbers may not add due to rounding.

¹ FY02 includes Emergency Supplemental Funding per P.L. 107-117(Operations, \$200M; F&E, \$108.5M; R,E&D, \$50M; and Grants-in-Aid, \$175M).

² FY03 estimates reflect the Administration's 2003 policy proposals because an FY03 Appropriation had not been enacted at the time the FY04 President's Budget was prepared.

³ FY03 and FY04 exclude Civil Service Retirement System and Federal Employee Health Benefits accruals.

Source: ABU-100
(202) 267-9070

As of: 2/6/03

FAA NAS Operational Facilities and FAA Aircraft (As of December 31)

	2002	2001	2000
NAS Operational Facilities¹	40,746	40,910	40,921
Communications.....	14,194	14,145	14,103
Automation.....	4,049	4,000	3,889
Environment.....	6,494	6,552	6,620
Navigation.....	11,104	11,210	11,211
Surveillance.....	1,871	1,833	1,794
Weather.....	3,034	3,170	3,304
Air Traffic Control Facilities²			
Air Route Traffic Control Center.....	21	21	21
Airport Traffic Control Tower.....	449	448	496
Flight Service ³	76	76	75
Flight Service Stations.....	16	16	14
Automated Flight Service Stations.....	60	60	61

¹ Excludes non-federal facilities and foreign facilities.

² Included in NAS operational facilities.

³ Flight Service include Flight Service Stations and Automated Flight Service Stations.

As of: 12/31/02

Source: AOP-200
(202) 267-3628

FAA Officials

Washington Headquarters

Routing Symbol	Officials
AOA*	Administrator Marion C. Blakey, 202-267-3111 David Mandell, Chief of Staff, 202-267-3111 Bobby Sturgell, Senior Counsel to AOA, 202-267-8111
ADA	Deputy Administrator Vacant, 202-267-8111
AOZ	<i>Free Flight</i> <i>Director, John Thornton, 202-220-3300</i>
ASI*	<i>Security and Investigations</i> <i>Director, Eugene Ross Hamory, 202-267-8537</i>
ABA*	Assistant Administrator for Financial Services John F. Hennigan, CFO (Actg.), 202-267-9105 Deputy, John F. Hennigan, 202-267-8928
ABU*	<i>Office of Budget</i> <i>Director, Alex Keenan, 202-267-8010</i>
AFM	<i>Office of Financial Management</i> <i>Director, David M. Lavada, 202-267-3018</i>
APF	<i>Office of Cost and Performance Management</i> <i>Director, Tim Lawler, 202-267-7140</i>
ACR	Assistant Administrator for Civil Rights Fanny Rivera, 202-267-3254 Deputy, Barbara A. Edwards, 202-267-3264
AGC*	Chief Counsel Vacant, 202-267-3222 Deputy, James Whitlow, 202-267-3773
AGI*	Asst. Administrator for Government & Industry Affairs David Balloff, 202-267-3277 Deputy, David V. Broome, 202-267-8211
AHR	Asst. Administrator for Human Resource Management Glenda Tate, 202-267-3456 Deputy, Mary Ellen Dix, 202-267-3850
AHA*	<i>Office of the Accountability Board</i> <i>Director, Maria Fernandez-Greczmiel, 202-267-3065</i>
AHD*	<i>Office of Organization, Learning & Development</i> <i>Director, Barbara J. Smith (Atcg.), 202-267-9041</i>
AHL	<i>Office of Labor & Employee Relations</i> <i>Director, Melvin Harris, 202-267-3979</i>
AHM	<i>Center for Management Development</i> <i>Director, Barbara J. Smith, 386-446-7136</i>
AHP	<i>Office of Personnel</i> <i>Director, Roger M. Edwards, 202-267-3979</i>

FAA Officials

Washington Headquarters--(Cont)

Routing Symbol	Officials
AIO	Assistant Administrator for Information Services Daniel J. Mehan, CIO, 202-493-4570 Deputy, Arthur Pyster, 202-493-4570
AIS	<i>Office of Information Systems Security</i> <i>Director, Michael F. Brown, 202-267-7104</i>
APA*	Assistant Administrator for Public Affairs Greg Martin, 202-267-3883 Deputy, Laura Brown, 202-267-3883
API	Asst. Administrator for Policy, Planning, and Intl. Aviat. Louise E. Maillett (Actg.), 202-267-3033 Deputy, Louise E. Maillett, 202-267-3927
AEE	<i>Office of Environment and Energy</i> <i>Director, Carl Bureson, 202-267-3576</i>
AIA*	<i>Office of International Aviation</i> <i>Director, Ava L. Wilkerson, 202-267-3213</i>
APO	<i>Office of Aviation Policy and Plans</i> <i>Director, John M. Rodgers, 202-267-3274</i>
ARC	Assistant Administrator for Region/Center Operations Ruth Leverenz, 817-222-5001 / 202-267-7369
ASY	Assistant Administrator for System Safety Christopher A. Hart, 202-267-3611 Deputy, Daniel C. Hedges, 202-267-3611
ARA	Associate Administrator for Research and Acquisitions Charles E. Keegan, 202-267-7222 Deputy, Dennis DeGaetano, 202-267-7222
AAR	<i>Office of Aviation Research</i> <i>Director, Herman Kedness, Ph.D., 202-267-9251</i>
ABZ	<i>Office of Business Management</i> <i>Director, Lauraline Gregory, 202-267-3616</i>
AND	<i>Office of Communications, Navigation, and Surveillance Sys.</i> <i>Director, Daniel P. Salvano, 202-267-3200</i>
ASD*	<i>Office of System Architecture and Investment Analysis</i> <i>Director, John A. Scardina, 202-385-7100</i>
ASU	<i>Office of Acquisitions</i> <i>Director, Gilbert B. Devey, 202-267-8513</i>
AUA	<i>Office of Air Traffic Systems Development</i> <i>Director, Gregory D. Burke, 202-493-0237</i>
ARP	Associate Administrator for Airports Woodie Woodward, 202-267-9471 Deputy, Paul L. Galis, 202-267-8738
AAS	<i>Office of Airport Safety and Standards</i> <i>Director, David L. Bennett, 202-267-3053</i>
APP	<i>Office of Airport Planning & Programming</i> <i>Director, Catherine M. Lang, 202-267-8775</i>

FAA Officials

Washington Headquarters--(Cont.)

Routing Symbol	Officials
AST*	Assoc. Adm. for Commercial Space Transportation Patricia Grace Smith, 202-267-7793 Deputy, Vacant, 202-267-7848
ATS*	Associate Administrator for Air Traffic Services Steven J. Brown, 202-267-7111 Deputy, Peter H. Challan, 202-267-3133
AAF*	<i>Airway Facilities Service</i> <i>Director, Steven B. Zaidman, 202-267-8181</i>
AAI	<i>Air Traffic Service</i> <i>Director, Bill G. Peacock, 202-267-3666</i>
ARI	<i>Runway Safety</i> <i>Director, William S. Davis, 202-385-4778</i>
AKS	<i>Air Traffic System Requirements Service</i> <i>Director, James H. Washington, 202-385-7500</i>
ASC	<i>Office of System Capacity and Requirements</i> <i>Director, Paula R. Lewis, 202-267-7370</i>
ATB*	<i>Terminal Business Service</i> <i>Director, William Voss, 202-264-3000</i>
ATQ	<i>Independent Operational Test and Evaluation</i> <i>Director, A. Martin Phillips, 202-267-3341</i>
AVR	Associate Administrator for Regulation & Certification Nicholas A. Sabatini, 202-267-3131 Deputy, Peggy Gilligan, 202-267-7804
AAI	<i>Office of Accident Investigation</i> <i>Director, Steven B. Wallace, 202-267-9612</i>
AAM	<i>Office of Aviation Medicine</i> <i>Director, Jon L. Jordon, MD, 202-267-3535</i>
AFS	<i>Flight Standards Service</i> <i>Director, James Ballough, 202-267-8237</i>
AIC	<i>Aircraft Certification Service</i> <i>Director, John J. Hickey, 202-267-8235</i>
ARM	<i>Office of Rulemaking</i> <i>Director, Anthony F. Fazio, 202-267-9677</i>
Duty Officer	(202) 267-3333

FAA Officials

Major Field Organizations

Routing Symbol	Officials
AAL	Alaskan Region, Regional Administrator Patrick N. Poe, 907-271-5645 222 West 7th Avenue, Box 14 Anchorage, Alaska 99513-7587 Duty Officer, 907-271-5936
ACE	Central Region, Regional Administrator Christopher Blum, 816-329-3050 901 Locust Kansas City, Missouri 64106 Duty Officer, 816-329-3000
ACT	William J. Hughes Technical Center, Director Anne Harlan, Ph.D., 609-485-6641 Atlantic City International Airport New Jersey 08405 Duty Officer, 609-485-6482
AEA	Eastern Region, Regional Administrator Arlene B. Feldman, 718-553-3000 1 Aviation Plaza 159-30 Rockaway Blvd. Jamaica, New York 11434-4809 Duty Officer, 718-553-3100
AGL	Great Lakes Region, Regional Administrator Cecelia Hunziker, 847-294-7294 2300 East Devon Avenue Des Plaines, Illinois 60018 Duty Officer, 847-294-8400
AMC	Mike Monroney Aeronautical Center, Director Lindy Ritz, 405-954-4521 6500 South MacArthur Oklahoma City, Oklahoma 73125 Duty Officer, 405-954-3583

FAA Officials

Major Field Organizations--(Cont.)

Routing Symbol	Officials
ANE	New England Region, Regional Administrator Amy Lind Corbett, 781-238-7020 12 New England Executive Park Burlington, Massachusetts 01803 Duty Officer, 781-238-7001
ANM	Northwest Mountain Region, Regional Administrator Tom Busker (Actg.), 425-227-2001 1601 Lind Avenue, S.W. Renton, Washington 98055-4056 Duty Officer, 425-227-2000
ASO	Southern Region, Regional Administrator Carolyn Blum, 404-305-5000 1701 Columbia Avenue College Park, Georgia 30337 Duty Officer, 404-305-5180
ASW	Southwest Region, Regional Administrator Ruth Leverenz, 817-222-5001 2601 Meacham Blvd. Ft. Worth, Texas 76137-4298 Duty Officer, 817-222-5006
AWP	Western-Pacific Region, Regional Administrator William C. Withycombe, 310-725-3550 15000 Aviation Boulevard Hawthorne, California 90261 Duty Officer, 310-725-3300

FAA Officials

International Area Offices

Routing Symbol	Officials
AEU	Europe, Africa, & Middle East Area Office, Director Paul Feldman, 011-322-508-2700 American Embassy, Brussels PSC 82 Box 002 APO AE 09724-1011
ALC	Latin America & Caribbean Area Office, Director Joaquin Archilla, 305-716-3300 8600 NW 36th Street Miami, FL 33166
APC*	Asia-Pacific Area Office, Director Elizabeth E. Erickson, 011-65-6540-4114 American Embassy 27 Napier Road Singapore 258508

FAA STRATEGIC GOALS & FY03 PERFORMANCE GOALS

SAFETY

Strategic Goal: *By 2007, reduce U.S. aviation fatal accident rates by 80% from 1996 levels.*

Strategies for Change:

- Accident prevention.
- Safety Information Sharing and Analysis.
- Certification and Surveillance.

FY 2003 GPRA Performance Goals:

Commercial Air Carrier Fatal Accident Rate: Reduce commercial fatal accidents per 100,000 departures to .033 or less.

General Aviation Fatal Accidents: Reduce the number of general aviation fatal accidents to 374 or less.

FY 2003 Supplemental Goals:

Runway Incursions: Reduce the number of category A/B runway incursions to 44 or less.

Operational Errors: Reduce the number of category A/B operational errors to 642 or less.

SECURITY

Strategic Goal: Prevent security incidents in the aviation system.

The goal is changing in light of September 11, 2001 and the transfer of functions to the Transportation Security Administration (TSA). FAA's focus has been largely on the transition to TSA and on information security.

SYSTEM EFFICIENCY

Strategic Goal: *Provide an aerospace transportation system that meets the needs of users and is efficient in the application of FAA and aerospace resources.*

Strategies for Change:

- Free Flight and Operational Evolution.
- NAS Modernization.
- System Integration.

FY 2003 GPRA Performance Goals:

On-Time Arrival: Increase the percentage of aircraft arriving no later than 15 minutes after the scheduled arrival time to 78.2%.

Aircraft Noise Exposure: Limit the number of people in the U.S. exposed to significant aircraft noise to 437,000 or less.

FY 2003 Supplemental Goals:

Airport Daily Arrival Capacity: Maintain an average airport daily arrival capacity of 49.12 (in thousands) at the 35 OEP airports.

Airport Arrival Efficiency Rate: Achieve an airport arrival efficiency rate of 95.49 percent at the 35 OEP airports.

People Benefiting from Noise Projects. Increase the cumulative number of people in residential communities that benefit from noise compatibility projects to 12,500.

ORGANIZATIONAL EXCELLENCE GOALS

People: The Foundation of Accomplishment

The model work environment at FAA

Create and maintain a hospitable work environment that supports a productive and skilled work force reflective of the Nation's diversity to accomplish the mission and better serve our customers now and into the 21st century.

Strategies for Change:

- Intellectual Capital.
- Managing the Diverse Work Force.
- Quality of Work Life.

Reform: The Framework for Accomplishment

FAA is reforming how it does business. The ATO is FAA's major structural reform to integrate modernization, operation, and maintenance of air traffic management. It focuses responsibility on a Chief Operating Officer and bases accountability on results.

Strategies for Change:

- Acquisition Reform.
- Personnel Reform.
- Financial Reform.

ORGANIZATIONAL EXCELLENCE GOALS (continued)

Environment: Our Responsibility

Environmental issues, especially aviation noise, are a key challenge to growth and prosperity of civil aerospace in the 21st century. Aerospace environmental impact must be reduced while not constraining aviation and commercial space transportation.

Strategies for Change:

- Understanding Aerospace Environmental Impacts.
- Reducing Aerospace Environmental Impacts.
- Quantify and Mitigate Environmental Impacts of FAA Activities.

Global Leadership: Commitment to Worldwide Improvements

FAA is committed to working for worldwide improvements in safety, security and system efficiency.

Strategies for Change:

- International Safety Oversight.
- Global Development and Implementation of Aerospace Traffic Management.
- International Regulatory Harmonization.

FY 2003 Performance Goals:

Major Acquisition Milestones Met: Meet 80% of budget and schedule milestones for critical programs published in the Capital Investment Plan (CIP).

Customer Satisfaction: Achieve a score of at least 62 on the American Customer Satisfaction Index (ACSI).

President's Management Agenda: Achieve a "Yellow Light" in the five areas of the President's Management Agenda on the DOT Scorecard.

(Budget to Performance, Competitive Sourcing, E-Government, Financial Management, and Human Capital)



FAA VISION

To provide the safest, most efficient and responsive aerospace system in the world, and to be the best Federal employer, continuously improving service to customers and employees.

FAA Mission

FAA provides a safe, secure, and efficient global aerospace system that contributes to national security and the promotion of US aerospace safety.

As the leading authority in the international aerospace community, FAA is responsive to the dynamic nature of customer needs, economic conditions, and environmental concerns.

FAA VALUES

We Believe in

- ☆ Trust*
- ☆ Integrity*
- ☆ Honesty*
- ☆ Involvement*
- ☆ Teamwork*
- ☆ Diversity*
- ☆ Respect*

We Are Committed To

- ☆ Responsiveness*
- ☆ Quality*
- ☆ Timeliness*
- ☆ Fiscal Responsibility*
- ☆ Accountability*
- ☆ Communication*

We Will Achieve These Values By

- ☆ Giving people what they need, then letting them do their jobs.*
- ☆ Making timely decisions at the lowest level and respecting them.*
- ☆ Committing our best to our customers.*
- ☆ Valuing our people.*
- ☆ Being open to new ideas.*
- ☆ Speaking out for what we believe, even when it is unpopular.*
- ☆ Recognizing each person's contributions and realizing each person's full potential.*
- ☆ Collaborating across organizations.*
- ☆ Taking pride in what we do.*