



U.S. Department  
of Transportation  
**Federal Aviation  
Administration**

# **ADMINISTRATOR'S FACT BOOK**

**June 2003**

(Updated quarterly)

Produced by:  
Assistant Administrator for Financial Services  
Office of Cost and Performance Management  
Standards and Information Division

Web site: <http://www.atctraining.faa.gov/factbook>

# Table of Contents

<b>FAA Vision and Mission.....</b>	<b>Inside Front Cover</b>
<b>FAA Values .....</b>	<b>Inside Back Cover</b>

## **Safety**

Aviation Accidents by Type of Operations .....	3*
Aviation Accident Rates by Type of Operation.....	4*
Airspace Incidents by Incident Type.....	5*
Airspace Incident Rates by Incident Type.....	6*
NTSB U.S. Transportation Fatalities .....	7

## **FAA Air Traffic**

FAA Air Traffic Activity .....	8*
Air Route Traffic Control Center Activity.....	9*
50 Busiest FAA Air Traffic Control Towers.....	10*
50 Busiest Approach Control Facilities.....	12*
Automated Flight Service Station Activity.....	14*

## **Airports**

Number of U.S. Airports.....	16
National Airspace Systems Delays .....	17*

## **Aircraft**

U.S. Air Carrier Activity .....	18
U.S. General Aviation Activity.....	19
Aircraft Certification Service .....	20

## **Industry Trends**

Scheduled U.S. Air Carrier Traffic & Fin. Trends .....	21
Aviation Forecasts .....	22

## **Airmen**

Active Pilots and Nonpilots .....	23
-----------------------------------	----

FAA Organizational Chart.....	Center Fold*
-------------------------------	--------------

<i>FAA Regional Boundaries Map .....</i>	<i>26</i>
--	-----------

# Table of Contents (cont.)

## Commercial Space Transportation

AST Licensing and Industry Activity .....	27
U.S. Commercial Space Launch Schedule .....	28

## FAA Resources

FAA Employment .....	29
FAA Percent Minority and Women Employment.....	30
FAA Major Work Force Employment.....	31*
Labor Relations.....	32
FAA Finances .....	33
FAA Facilities and Aircraft .....	34

## Organization

FAA Officials--Washington Headquarters.....	35*
FAA Officials--Major Field Organizations.....	38
FAA Officials--International Offices .....	40
FAA Strategic Goals & FY03 Performance Goals.....	41

---

For further information call APF-100 (202-267-9946)

---

\*Updated this issue

Distribution: A-WXYZE-3; A-FOF-O(STD)

## Aviation Accidents by Type of Operation

Type of Operation	Year	Jan	Feb	Mar	Apr	May	Jun	Jul	Aug	Sep	Oct	Nov	Dec	Year Total
Large Air Carrier	2002	3	3	6	5	3	7	5	1	2	2	4	0	41
	2003	5	3	4	5									17
Commuter	2002	0	0	2	0	1	1	1	1	2	0	0	0	8
	2003	0	0	0	0									0
Air Taxi	2002	5	5	8	1	4	7	7	6	4	5	2	5	59
	2003	7	5	3	7									22
General Aviation	2002	95	93	114	137	164	209	207	204	163	122	118	89	1,715
	2003	101	87	134	143									465
Rotorcraft*	2002	13	11	16	15	21	29	23	19	21	12	14	12	206
	2003	15	9	13	12									49

\* Part 135 and US registered general aviation rotorcraft accidents.

Sep 2001 does include the 4 aircraft destroyed in the terrorist attacks of Sep. 11th

Note: Preliminary data and subject to change.

As of: 05/15/03

Source: AAI-200

(202) 267-3279

## Aviation Accident Rates by Type of Operation

Type of Operation	1998		1999		2000		2001		% Chg 01-00	
	Number	Rate	Number	Rate	Number	Rate	Number	Rate	Number	Rate
Large Air Carriers.....	50	.29	52	.29	57	.31	40	.21	-30%	-32%
Commuter.....	8	2.26	13	3.79	12	3.21	7	2.11	-42%	-34%
Air Taxi.....	77	2.03	73	2.21	81	2.28	72	2.12	-11%	-7%
General Aviation.....	1,904	7.45	1,906	6.41	1,838	6.33	1,721	6.56	-6%	4%

Accident Rates are per 100,000 Flight Hours

Rotorcraft rates discontinued, currently under review

Note: Preliminary data and subject to change.

As of: 3/26/02

Source: AAI-200

(202) 267-3279

## Airspace Incidents by Incident Type

Incident Type	Year	Jan	Feb	Mar	Apr	May	Jun	Jul	Aug	Sep	Oct	Nov	Dec	Year Total
Near Midair Collisions	2002	14	11	12	16	15	19	22	15	17	19	13	7	180
	2003	10	12	11	8									41
Pilot Deviations	2002	136	128	142	169	153	175	174	173	191	153	175	164	1,933
	2003	123	153	310	274									860
Operational Errors	2002	87	66	109	110	93	87	86	84	78	99	79	65	1,043
	2003	71	89	99	109									368
Vehicle Pedestrian Deviations	2002	28	29	31	40	38	27	28	29	43	24	24	18	359
	2003	26	29	32	19									106
Surface Incidents	2002	62	68	87	91	121	101	83	88	101	63	82	71	1,018
	2003	69	75	83	59									286
Runway Incursions*	2002	14	18	31	27	46	30	23	33	35	25	28	26	336
	2003	29	26	30	19									104

Note: Preliminary data and subject to change.

Source: ATX-400  
(202) 385-4802  
\*ATS  
(202) 385-4788

As of: 05/15/03

\*As of: 04/30/03

## Airspace Incident Rates by Incident Type

Incident Type									Percent Change	
	1999		2000		2001		2002		2001 - 2002 (4)	
	Number	Rate	Number	Rate	Number	Rate	Number	Rate	Number	Rate
Operational Errors (1).....	992	.60	1,138	.69	1,182	.74	1,043	.66	-12%	-11%
Pilot Deviations (2).....	1,629	.99	1,900	1.15	1,975	1.20	1,933	1.17	-2%	-3%
Surface Incidents (3).....	1,048	1.53	1,391	2.06	1,251	1.91	1,018	1.57	-19%	-18%

9

(1) Per 100,000 Facility Activities

(2) Per 100,000 Flight Hours

(3) Per 1,000,000 Airport Operations

(4) Calculations use fifteen decimal places for rates (rounded two places for display).

Note: 2002 data preliminary and subject to change.

As of: 05/15/03

Source: ATX-400

(202) 385-4802

# National Transportation Safety Board 2001-2000 U.S. Transportation Fatalities

	2001 <sup>1</sup>	2000
<b>Highway</b>		
Passenger cars.....	20,269	20,492
Light Trucks and Vans.....	11,564	11,418
Pedestrians.....	4,698	4,739
Motorcycles.....	3,067	2,862
Pedalcycles <sup>2</sup> .....	701	690
Medium and heavy trucks.....	696	741
Buses.....	N/A	22
All Other <sup>3</sup> .....	735	857
<b>Total.....</b>	<b>41,730</b>	<b>41,821</b>
<b>Grade Crossings<sup>4</sup></b>	<b>(418)</b>	<b>(425)</b>
<b>Rail</b>		
Intercity <sup>5</sup>		
Trespassers and nontrespassers <sup>6</sup> .....	591	544
Employees and contractors.....	26	28
Passengers on trains.....	3	4
Transit <sup>7</sup>		
Light, heavy, and commuter rail.....	175	194
<b>Total.....</b>	<b>795</b>	<b>770</b>
<b>Marine</b>		
Recreational Boating.....	700	701
Cargo Transport.....	21	36
Commercial fishing <sup>8</sup> .....	23	41
Commercial Passengers.....	23	23
<b>Total.....</b>	<b>767</b>	<b>801</b>
<b>Aviation</b>		
General Aviation.....	553	594
Airlines <sup>9</sup> .....	531	92
Air Taxi.....	60	71
Commuter.....	13	5
Foreign/Unregistered <sup>10</sup> .....	5	17
<b>Total.....</b>	<b>1,162</b>	<b>779</b>
<b>Pipeline</b>		
Gas.....	7	37
Liquids.....	0	1
<b>Total.....</b>	<b>7</b>	<b>38</b>
<b>GRAND TOTAL.....</b>	<b>44,461</b>	<b>44,209</b>

<sup>1</sup> 2001 preliminary estimates. Aviation data from NTSB; all other from DOT. <sup>2</sup> Includes bicycles or other cycles. <sup>3</sup> Includes vehicle occupant fatalities in vehicle types; ex. farm or construction equipment. <sup>4</sup> Grade crossing fatalities not counted separately for determining the grand totals because they are included in the highway and rail categories, as appropriate. <sup>5</sup> Data reported to Federal Rail Administration (FRA). <sup>6</sup> includes persons on railroad property with and without permission. Does not include motor vehicle occupants killed at grade crossings. <sup>7</sup> Data reported to the FTA. Fatalities for commuter rail operations may also be reported to the FRA and may be included in the intercity railroad fatalities. <sup>8</sup> Refers to only operational fatalities. <sup>9</sup> Of the 531 airline fatalities in 2001, 265 occurred aboard the four hijacked airplanes on September 11, 2001. <sup>10</sup> Includes non-U.S. registered aircraft involved in accidents in the U.S.



# Air Traffic

## FAA Air Traffic Activity (In Thousands)

Aircraft Handled by	Jan-Mar	Jan-Mar	Jan-Dec
<b>FAA ARTCC's</b>	<b>2003*</b>	<b>2,002</b>	<b>2,002</b>
Air Carrier.....	5,607	5,559	23,143
Air Taxi.....	2,222	2,165	8,878
General Aviation.....	1,870	1,939	8,147
Military.....	938	966	3,949
<b>TOTAL....</b>	<b>10,637</b>	<b>10,629</b>	<b>44,117</b>
<b>Airport Operations</b>			
<b>Logged by FAA Towers</b>			
Air Carrier.....	3,081	3,152	13,101
Air Taxi.....	2,317	2,277	9,599
General Aviation.....	5,106	5,569	23,918
Military.....	462	495	1,989
<b>TOTAL....</b>	<b>10,966</b>	<b>11,493</b>	<b>48,607</b>
<b>Instrument Operations</b>			
<b>Logged by FAA Towers</b>			
Air Carrier.....	3,412	3,452	14,408
Air Taxi.....	2,866	2,803	11,649
General Aviation.....	3,979	4,324	19,190
Military.....	772	861	3,425
<b>TOTAL....</b>	<b>11,029</b>	<b>11,440</b>	<b>48,672</b>
<b>Flight Services</b>			
<b>Logged by: **</b>	<b>Jan-Apr</b>	<b>Jan-Apr</b>	<b>Jan-Dec</b>
	<b>2003*</b>	<b>2,002</b>	<b>2,002</b>
Flight Service Stations.....	213	208	909
Automated Flight Service Stations.....	8,124	8,790	27,714
<b>TOTAL....</b>	<b>8,337</b>	<b>8,998</b>	<b>28,623</b>

\*Preliminary

As of: 03/31/03

\*\*\*As of: 04/30/03

Source: APO-130

(202) 267-3350

\*\*Source: ATX-400

(202) 385-4734

# Air Route Traffic Control Center Activity

CY 2002 Rank	Center	Aircraft Handled (000's)		
		Jan-Mar 2003*	Jan-Mar 2002	Jan-Dec 2002
1	Cleveland, OH.....	699	715	3,027
2	Atlanta, GA.....	710	717	2,926
3	Chicago, IL.....	672	655	2,856
4	New York, NY.....	676	657	2,797
5	Indianapolis, IN.....	631	633	2,675
6	Washington, DC.....	610	622	2,574
7	Jacksonville, FL.....	584	569	2,206
8	Memphis, TN.....	536	524	2,200
9	Miami, FL.....	603	610	2,183
10	Kansas City, KS.....	493	508	2,132
11	Fort Worth, TX.....	513	504	2,111
12	Minneapolis, MN.....	473	466	2,063
13	Los Angeles, CA.....	501	491	2,023
14	Houston, TX.....	488	496	1,971
15	Boston, MA.....	405	404	1,798
16	Albuquerque, NM.....	428	442	1,738
17	Denver, CO.....	419	409	1,701
18	Oakland, CA.....	387	386	1,606
19	Salt Lake City, UT.....	355	366	1,526
20	Seattle, WA.....	299	300	1,281
21	Anchorage, AK.....	128	126	602
22	Guam ** .....	28	29	120

\*Preliminary

\*\*Center Radar Approach Control (CERAP)

As of: 03/31/03

Source: APO-130  
(202) 267-3350

# 50 Busiest FAA Airport Traffic Control Towers

CY 2002 Rank	Tower and State	Airport Operations (000's)		
		Jan-Mar 2003*	Jan-Mar 2002	Jan-Dec 2002
1	Chicago/O'Hare Int'l., IL.....	223	213	923
2	Atlanta International, GA.....	218	216	891
3	Dallas/Ft. Worth Int'l., TX.....	186	185	777
4	Los Angeles Int'l, CA.....	156	152	645
5	Phoenix Sky Harbor Int'l, AZ.....	147	142	590
6	Denver International, CO.....	124	118	509
7	Minneapolis-St. Paul Int'l, MN.....	123	117	507
8	Van Nuys, CA.....	112	123	498
9	Las Vegas/McCarran Int'l, NV <sup>1</sup> .....	79	120	498
10	Detroit Metro Wayne Co., MI.....	121	120	498
11	Covington/Cincinnati Int'l, KY.....	119	114	485
12	Philadelphia Int'l, PA.....	106	112	468
13	Houston/G Bush Intercont'l, TX.....	113	112	462
14	Charlotte/Douglas Int'l, NC.....	102	116	459
15	Lambert-St. Louis Int'l, MO.....	102	110	452
16	Miami International, FL.....	112	113	446
17	Pittsburgh International, PA.....	88	451	425
18	Denver/Centennial.....	79	103	422
19	Newark International, NJ.....	98	99	411
20	Salt Lake City Int'l, UT.....	98	97	407
21	Boston/Logan Int'l, MA.....	87	95	405
22	Memphis International, TN.....	99	95	398
23	Washington Dulles Int'l, VA.....	89	96	392
24	Phoenix-Deer Valley, AZ.....	99	105	390
25	Santa Ana/John Wayne, CA.....	86	91	376

\*Preliminary

As of: 03/31/03

# 50 Busiest FAA Airport Traffic Control Towers

CY 2002 Rank	Tower and State	Airport Operations (000's)		
		Jan-Mar 2003*	Jan-Mar 2002	Jan-Dec 2002
26	Metropolitan Oakland Int'l.....	85	95	372
27	La Guardia, NY.....	90	86	368
28	Seattle Tacoma Int'l, WA.....	82	85	365
29	Daytona Beach Int'l, FL.....	85	99	355
30	San Francisco Int'l, CA.....	82	82	351
31	Long Beach/Daughtery, CA.....	83	81	351
32	Orlando/Sanford, FL.....	87	98	324
33	Prescott/E. A. Love Field, AZ'.....	56	93	339
34	Honolulu International, HI.....	75	77	324
35	Tulsa/Riverside, OK.....	71	76	322
36	Anchorage International, AK.....	52	55	309
37	Baltimore/Wash. Int'l, MD.....	68	74	305
38	Chicago Midway, IL.....	74	67	304
39	Orlando International, FL.....	75	78	303
40	John F. Kennedy Int'l, NY.....	73	69	301
41	Mesa/Falcon Field, AZ.....	76	70	289
42	Seattle/Boeing Field, WA.....	62	56	286
43	Grand Forks International, FL.....	74	71	286
44	Fort Lauderdale/Hollywood, FL.....	77	74	281
45	Portland International, OR.....	63	65	278
46	Pontiac/Oakland Co. Int'l, MI.....	59	58	278
47	Tucson International, AZ.....	70	68	273
48	Cleveland Hopkins Int'l, OH.....	58	65	262
49	Port Columbus International,	58	61	256
50	Albuquerque International, NM.....	56	63	255

# 50 Busiest Radar Approach Control Facilities

CY 2002 Rank	Facilities/State	Instrument Ops (000s)		
		Jan-Mar 2003*	Jan-Mar 2002	Jan-Dec 2002*
1	Southern Calif. TRACON, CA.....	507	513	2,156
2	New York TRACON, NY.....	443	450	1,986
3	Chicago TRACON, IL.....	333	317	1,416
4	Dallas/Ft Worth, TRACON, TX.....	301	309	1,289
5	Atlanta TRACON, GA.....	312	291	1,283
6	Miami International, FL.....	243	241	915
7	Bay TRACON, CA <sup>1</sup> .....	1	249	848
8	Houston TRACON, TX.....	203	199	829
9	Phoenix TRACON, AZ.....	192	191	773
10	Denver TRACON, CO.....	168	168	715
11	Philadelphia International, PA.....	145	169	692
12	Detroit TRACON, MI.....	159	158	689
13	Washington Dulles Int'l, VA.....	90	153	664
14	Minneapolis TRACON, MN.....	151	142	629
15	Salt Lake City TRACON, UT.....	144	135	621
16	Covington/Cincinnati Int'l, KY.....	146	144	617
17	St Louis TRACON, MO.....	136	149	615
18	Las Vegas TRACON, NV.....	96	147	608
19	Daytona Beach Int'l, FL.....	144	165	595
20	Charlotte/Douglas Int'l, NC.....	130	145	594
21	Orlando International, FL.....	148	162	593
22	Washington National, DC.....	99	129	591
23	San Juan CERAP, PR.....	160	164	587
24	Tampa International, FL.....	145	150	559
25	Boston TRACON, MA.....	112	126	557

\* Preliminary    <sup>1</sup>Missing 2003 data

Source: APO-130  
(202) 267-3350

As of: 03/31/03

# 50 Busiest Radar Approach Control Facilities

CY 2002 Rank	Facilities/State	Instrument Ops (000's)		
		Jan-Mar 2003*	Jan-Mar 2002	Jan-Dec 2002*
26	Seattle/Tacoma TRACON, WA.....	119	123	542
27	Pittsburgh International, PA.....	107	129	524
28	Baltimore-Washington Int'l, MD.....	97	117	513
29	Honolulu Control Facility, HI .....	123	120	494
30	Memphis International, TN.....	114	112	474
31	Jacksonville Int'l, FL.....	110	117	451
32	San Antonio Int'l, TX.....	96	109	436
33	Port Columbus Int'l, OH.....	87	92	405
34	Pensacola TRACON, FL.....	102	109	403
35	Cleveland Hopkins Int'l, OH.....	79	84	363
36	Corpus Christi, TX.....	78	88	361
37	North California TRACON, CA.....	366	<sup>2</sup>	359
38	Yankee TRACON, CT.....	69	83	357
39	Dayton International, OH.....	74	79	357
40	Palm Beach International, FL.....	107	107	356
41	Portland TRACON, OR.....	74	77	339
42	Milwaukee/Gen Mitchell Intl, WI....	73	75	337
43	Anchorage TRACON, AK.....	63	64	327
44	Austin, TX.....	73	79	328
45	Raleigh-Durham Int'l, NC.....	69	77	323
46	Kansas City International, MO.....	67	74	321
47	Oklahoma City/Will Rogers, OK	70	79	315
48	Albuquerque International, NM.....	66	77	312
49	Norfolk International, VA.....	66	74	309
50	Sacramento TRACON, CA.....	<sup>1</sup>	104	308

<sup>2</sup> Became effective in August 2002.

# Automated Flight Service Stations Activity

CY 2002 Rank	AFSS/State	Flight Services (000's)		
		Jan-Apr 2003*	Jan-Apr 2002	Jan-Dec 2002
1	St. Petersburg, FL.....	421	454	1,176
2	Miami AIFSS, FL.....	418	409	1,075
3	Fort Worth, TX.....	244	270	818
4	Macon, GA.....	244	265	790
5	Lansing, MI.....	205	210	775
6	Prescott, AZ.....	226	245	706
7	Denver, CO.....	189	224	692
8	Seattle, WA.....	166	197	667
9	Leesburg, VA.....	218	197	657
10	Gainesville, FL.....	181	225	654
11	Raleigh, NC.....	182	204	640
12	Kankakee, IL.....	170	190	633
13	San Angelo, TX.....	200	210	618
14	Princeton, MN.....	150	170	613
15	Bridgeport, CT.....	130	161	594
16	Green Bay, WI.....	123	139	547
17	Millville, NJ.....	188	162	537
18	Oakland AIFSS, CA.....	157	181	492
19	Anniston, AL.....	146	172	511
20	Mc Alester, OK.....	161	165	518
21	Terre Haute, IN.....	131	152	510
22	Conroe, TX.....	171	172	505
23	Hawthorne, CA.....	151	164	487
24	Columbia, MO.....	136	148	487
25	Kenai AIFSS, AK.....	107	118	459
26	Anderson, SC.....	137	146	444
27	Albuquerque, NM.....	129	139	428
28	Williamsport, PA.....	113	140	422
29	Cleveland, OH.....	105	119	413
30	Altoona, PA.....	119	120	406

\* Preliminary

Source: ATX-400  
(202) 385-4734

Automated International Flight Service Station--AIFSS

As of: 03/31/03

# Automated Flight Service Stations Activity

CY 2002 Rank	AFSS/State	Flight Services (000's)		
		Jan-Apr 2003*	Jan-Apr 2002	Jan-Dec 2002
31	St. Louis, MO.....	114	130	404
32	Jonesboro, AR.....	119	127	397
33	San Juan AIFSS, PR.....	119	127	396
34	Riverside, CA.....	141	135	383
35	Grand Forks, ND.....	115	130	380
36	Reno, NV.....	115	124	379
37	Mc Minnville, OR.....	101	110	374
38	Bangor, ME.....	95	99	374
39	Nashville, TN.....	113	116	363
40	Burlington, VT.....	90	96	362
41	Dayton, OH.....	92	108	361
42	Wichita, KS.....	101	113	355
43	Islip AIFSS, NY.....	110	94	352
44	San Diego, CA.....	92	121	343
45	Rancho Murieta, CA.....	103	112	340
46	De Ridder, LA.....	113	116	326
47	Cedar City, UT.....	100	103	321
48	Fort Dodge, IA.....	72	86	296
49	Louisville, KY.....	78	84	273
50	Buffalo, NY.....	65	76	268
51	Elkins, WV.....	81	80	260
52	Greenwood, MS.....	84	84	258
53	Huron, SD.....	69	63	237
54	Great Falls, MT.....	54	64	227
55	Columbus, NE.....	63	67	225
56	Honolulu, HI.....	79	75	225
57	Jackson, TN.....	61	63	209
58	Fairbanks, AK.....	47	53	197
59	Casper, WY.....	44	53	184
60	Boise, ID.....	48	48	182
61	Juneau, AK.....	27	31	134



# Airports

## Number of U.S. Airports <sup>1</sup> (As of December 31)

	2002	2001	2000
<b>Total Airports</b> .....	19,572	19,356	19,281
Public Use Airports.....	5,286	5,294	5,317
# with Paved Runways.....	3,940	3,947	3,953
# with Unpaved Runways....	1,346	1,347	1,364
# with Lighted Runways.....	4,024	4,034	4,035
# with Unlighted Runways...	1,262	1,260	1,282
Private Use Airports.....	14,286	14,062	13,964
# with Paved Runways.....	4,632	4,555	4,463
# with Unpaved Runways...	9,654	9,507	9,501
# with Lighted Runways.....	1,183	1,118	1,010
# with Unlighted Runways..	13,103	12,944	12,954
<b>Public use airports abandoned...</b>	16	26	13
<b>Private use airports abandoned.</b>	121	220	156
<b>Certificated Airports*</b> .....	633	635	651
Civil .....	558	560	563
Military .....	75	75	88

<sup>1</sup> Includes civil and joint-use civil-military airports, heliports, STOLports, and seaplane bases in the U.S. and its territories.

<sup>2</sup> Preliminary

\* Certificated airports serve Air Carrier Operations with aircraft seating more than 30 passengers. (FAR Part 139).

Source: AAS-330  
(202) 267-8752

As of: 12/31/02

## National Airspace Total System Delays

Year	Jan	Feb	Mar	Apr	May	Jun	Jul	Aug	Sep	Oct	Nov	Dec	YTD Total
<b>2003*</b>	16,159	18,260	25,387	17,474									77,280
<b>2002</b>	14,158	13,821	20,020	24,027	28,533	33,770	32,304	29,056	24,493	25,266	17,712	22,489	285,649
<b>2001</b>	27,894	31,599	30,040	30,260	36,460	41,607	40,037	49,423	18,628	13,365	13,249	15,541	348,103
<b>2000</b>	26,015	27,208	32,205	35,332	36,570	50,114	44,430	47,893	43,357	43,794	34,365	29,006	450,289 r/
<b>1999</b>	24,345	19,851	23,180	34,046	39,533	41,602	45,162	37,189	32,833	28,223	23,330	24,822	374,116 r/

Delays of 15 minutes or longer

r/ Revised

\* Preliminary information that is subjected to change

As of: 04/30/03

Source: ATT-220  
(703) 904-4470

# Aircraft

## U.S. Air Carrier Activity

	CY 2000	CY 1999	CY 1998
<b>Total Number of Aircraft<sup>1</sup>.....</b>	19,399	19,145	18,754
<b>Type of Carrier</b>			
Domestic, flag, supplemental, scheduled, cargo air carriers, and commercial operators.....	7,368	7,094	6,959
Commuter Air Carriers and Air Taxis.....	12,031	12,051	11,795
<b>Total Number of Aircraft<sup>1</sup>.....</b>	19,399	19,145	18,754
<b>Type of Aircraft</b>			
Jet.....	7,769	7,270	6,865
Turboprop.....	3,857	3,740	3,535
Piston.....	5,358	5,757	6,065
Rotary Wing.....	2,415	2,378	2,289
<b>Air Carrier Traffic Statistics<sup>2</sup> (Millions)*</b>		r/ r/	r/ r/
Passenger miles flown.....	708,926	668,626	635,517
Passenger enplanements.....	678	646	625
Ton miles.....	116,096	95,842	91,650
Aircraft miles flown.....	7,039	6,557	6,226
Passenger load factor <sup>3</sup>			
Domestic.....	71.2%	69.8%	70.0%
International.....	76.0%	74.4%	72.8%

<sup>1</sup> Source: Vital Information System

<sup>2</sup> Includes domestic and international scheduled service, of Certificated Route Air Carriers only.

<sup>3</sup> Proportion of aircraft seating capacity that is sold.

r/ Revised.

As of: 12/31/01

Source: AFS-40  
(202) 385-4514  
\*BTS (K-25)  
(202) 366-8513

# U.S. General Aviation and Air Taxi Activity

## (Calendar Years)

	Estimated Active Aircraft (thousands)		Estimated Hours Flown (Millions)	
	2001	2000	2001	2000
<b>Total</b> .....	211.2	217.5	29.1	31.0
<b>By Type Aircraft</b>				
Piston.....	163.3	170.5	20.9	22.2
Turboprop.....	6.6	5.8	1.9	2.0
Jet.....	7.8	7.0	2.7	2.8
Rotary Wing.....	6.8	7.2	2.1	2.3
Other.....	6.5	6.7	0.3	0.4
Experimental.....	20.4	20.4	1.2	1.3
<b>By Type Flying</b>				
Corporate.....	7.8	11.0	2.7	3.8
Business.....	21.6	25.2	3.4	3.6
Personal.....	158.3	148.2	12.4	11.7
Instructional.....	10.5	14.9	4.6	5.4
Aerial Application.....	2.9	4.3	1.0	1.4
Aerial Observation.....	4.6	5.1	1.5	1.6
Aerial Other.....	0.5	1.0	0.2	N/A
External Load.....	0.2	0.2	0.1	0.2
Other Work.....	1.1	1.8	0.3	0.5
Sightseeing.....	0.5	0.9	0.2	0.2
Air Tours.....	0.3	0.3	0.2	0.2
Air Taxi.....	1.9	3.7	2.2	1.7
Air Medical Services...	1.0	1.0	0.4	0.4

N/A = Not Applicable

Source: APO-110

As of: 1/16/03

(202) 267-3103

# Aircraft Certification Service

## Aircraft Certification Mission and Program Profiles

	FY 2002	FY 2001
Type Certificates/Supplemental Type Certificates Issued.....	830	817
Other Design Approvals Issued.....	5,820	5,900
Production Approvals (Including Amendments) Issued.....	2,678	2,729
Airworthiness Certificates Issued.....	757	619
New Airworthiness Directives (AD) Issued.....	389	529
New Designees (Representative of the Administrator) Appointed.....	1,019	870
Total Active Designees.....	4,813	4,750

As of: 9/30/02

Source: AIR-503  
(202) 267-7260

# Industry Trends

## Scheduled U.S. Air Carrier Traffic and Financial Trends

	2nd Qtr FY 2002	2nd Qtr FY 2001	Numerical Change	Percent Change
<b>TRAFFIC</b>				
<b>ASM'S (in millions)</b>				
Majors.....	587,097	671,727	(84,629)	(12.6)
Nationals.....	50,846	49,529	1,317	2.7
Regionals.....	893	647	246	38.0
<b>Totals.....</b>	<b>638,836</b>	<b>721,902</b>	<b>(83,066)</b>	<b>(11.5)</b>
<b>RPM's ( in millions)</b>				
Majors.....	412,037	475,039	(63,002)	(13.3)
Nationals.....	34,273	33,376	897	2.7
Regionals.....	499	344	155	45.0
<b>Totals.....</b>	<b>446,809</b>	<b>508,759</b>	<b>(61,950)</b>	<b>(12.2)</b>
<b>Load Factor (in percent)</b>				
Majors.....	70.2	70.7	(0.5)	
Nationals.....	67.4	67.4	0.0	
Regionals.....	55.8	53.2	2.7	
<b>Totals.....</b>	<b>69.9</b>	<b>70.5</b>	<b>(0.5)</b>	
<b>FINANCIAL</b>				
<b>Revenues (in millions)</b>				
Majors.....	\$69,146	\$86,208	(\$17,062)	(19.8)
Nationals.....	6,551	8,564	(2,013)	(23.5)
Regionals.....	691	681	10	1.4
<b>Totals.....</b>	<b>\$76,388</b>	<b>\$95,453</b>	<b>(\$19,065)</b>	<b>(20.0)</b>
<b>Expenses (in millions)</b>				
Majors.....	\$77,280	\$87,297	(\$10,017)	(11.5)
Nationals.....	6,914	8,573	(1,660)	(19.4)
Regionals.....	689	691	(2)	(0.3)
<b>Totals.....</b>	<b>\$84,882</b>	<b>\$96,561</b>	<b>(\$11,679)</b>	<b>(12.1)</b>
<b>Operating Profit/Loss (in millions)</b>				
Majors.....	\$8,134	\$1,090	(\$7,045)	
Nationals.....	(363)	(10)	(353)	
Regionals.....	2	(10)	12	
<b>Totals.....</b>	<b>(\$8,495)</b>	<b>(\$1,109)</b>	<b>(\$7,386)</b>	

As of: 10/18/02

Source: APO-110  
(202) 493-4236

# Aviation Forecasts

Actual Forecast  
FY 2001 FY 2005

---

## FAA FACILITY WORKLOAD

### Aircraft Handled by FAA ARTCC's (Millions)

Air Carrier.....	24.9	25.2
Air Taxi/Commuter.....	8.3	9.7
General Aviation.....	8.0	8.6
Military.....	4.0	4.1

### Operations Logged by FAA Towers (Millions)

Airport.....	66.2	71.5
Instrument.....	50.9	53.3

### Flight Services Logged by Flight Services Stations (Millions)

	29.0	30.7
--	------	------

---

## CIVIL AVIATION ACTIVITY

### Certificated Route Air Carrier

Revenue Passenger Enplanements (Millions)*.....	649.6	701.0
Revenue Passenger Miles (Billions)*.....	682.2	752.4

<b>Air Carrier Aircraft</b> .....	5,840	6,771
-----------------------------------	-------	-------

### General Aviation Estimated

Hours Flown (Millions)**.....	29.0	29.3
Active Aircraft (Thousands)**.....	216.2	215.7

---

## ESTIMATED FUEL CONSUMED BY U.S. DOMESTIC CIVIL AVIATION (Millions of Gallons)

### Jet Fuel

Air Carrier.....	19,864	20,692
General Aviation.....	986	1,174

### Aviation Gas

Air Carrier.....	2	2
General Aviation.....	313	326

---

<b>Active Pilots (Thousands)**</b> .....	649,957	661,975
--	---------	---------

---

\*\* Calendar Year

Source: APO-110  
(202) 493-4236

As of: 3/18/02

## Active Pilots and Nonpilots (As of 31 December)

	2001		2000	
	Total	Women	Total	Women
<b>Pilot-Total</b> .....	<b>612,274</b>	<b>35,776</b>	<b>625,581</b>	<b>36,757</b>
Student.....	86,731	10,230	93,064	10,809
Private.....	243,823	13,894	251,561	14,554
Commercial.....	120,502	5,932	121,858	5,807
Airline Transport.....	144,702	4,630	141,596	4,411
Other <sup>1</sup> .....	16,516	1,090	17,502	1,176
<b>Nonpilot-Total<sup>2</sup></b> .....	<b>513,100</b>	<b>17,114</b>	<b>547,453</b>	<b>16,552</b>
Mechanic.....	310,850	5,295	344,434	5,047
Repairmen.....	40,085	1,789	38,208	1,704
Ground Instructor.....	72,261	5,169	72,326	5,154
Flight Engineer.....	65,398	2,124	65,098	2,076
Other <sup>3</sup> .....	24,506	2,737	27,387	2,571
<b>Flight Instructor</b> .....	<b>82,875</b>	<b>5,386</b>	<b>80,931</b>	<b>5,193</b>

<sup>1</sup> Includes helicopter (only) & glider (only), and recreational pilot certificates.

<sup>2</sup> Excludes non-pilots 70 years old or over in all certificate types except flight engineers and flight navigators.

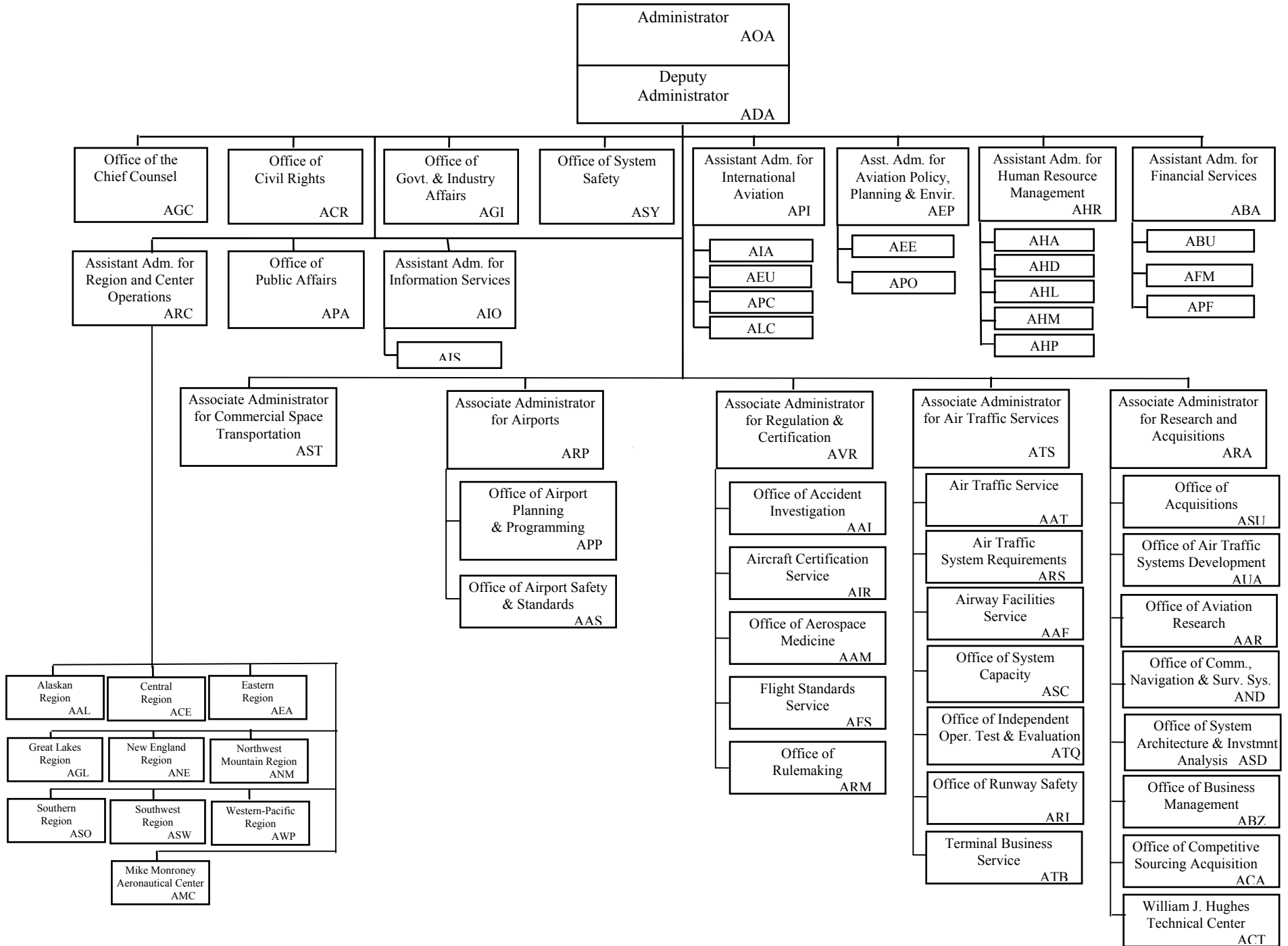
<sup>3</sup> Includes flight navigators, parachute riggers, and dispatchers.

As of 12/31/01

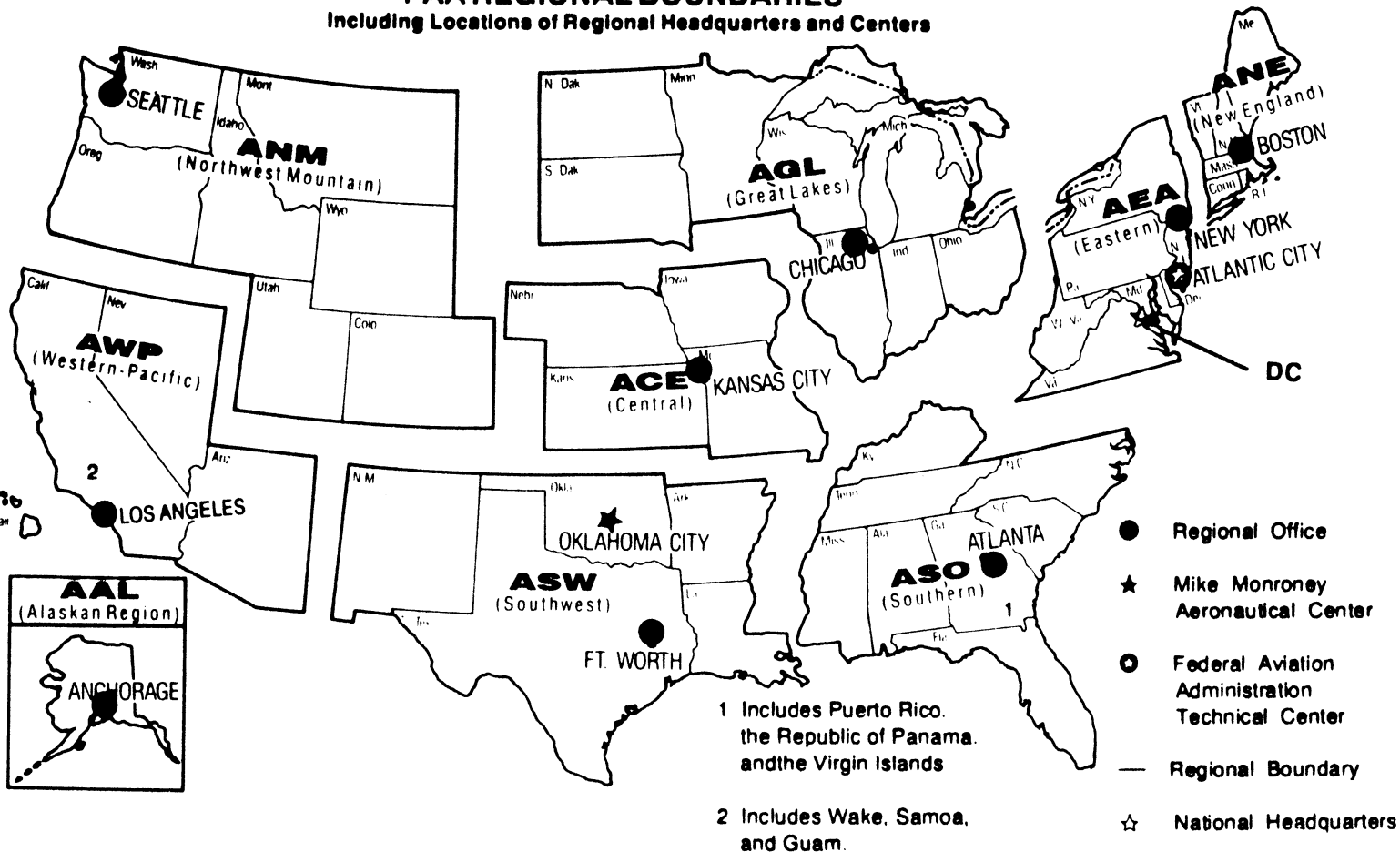
Source: APO-110  
(202) 267-3352



# FEDERAL AVIATION ADMINISTRATION



**U.S. DEPARTMENT OF TRANSPORTATION  
Federal Aviation Administration  
FAA REGIONAL BOUNDARIES**  
Including Locations of Regional Headquarters and Centers



# U.S. Commercial Space Transportation Activity and AST Licensing

	CY 2001	CY 2002	CY 2003 (Projected)
<b>Licensed Commercial Launches</b>			
<b>TOTAL</b>	<b>6</b>	<b>7</b>	<b>10</b>
<b>Number of Orbital Launches</b>	5	6	10
<b>Number of Sub-Orbital Launches</b>	1	1	0
<b>By Launch Vehicle Type</b>			
Delta Family (Boeing Company)	1	2	0
Atlas Family (Lockheed Martin)	1	3	4
Pegasus (Orbital Sciences Corp.)	0	0	1
Taurus (Orbital Sciences Corp.)	1	0	1
Athena 1&2 (Lockheed Martin)	0	0	0
Zenit 3SL (KB Yuzhnoye, Ukraine)	2	1	4
other suborbital	1	1	0
<b>By Launch Site (Federal)</b>			
Cape Canaveral Air Station, FL	1	4	4
Vandenberg AFB, CA	2	1	2
Kwajalein Missile Range	0	0	0
<b>By Launch Site (Commercial)</b>			
California Spaceport	0	0	0
Florida Space Authority	0	0	0
Virginia Space Flight Center	0	0	0
Kodiak Launch Complex (Alaska)	0	0	0
International Sites/Pacific Ocean	3	2	4

Source: AST  
(202) 385-4804

As of: 01/27/03

## United States Commercial Space Launch Schedule, CY 2003

(launch dates are subject to change)

<b>Payload (Operator)/ Description</b>	<b>Launch Company/ Vehicle</b>	<b>Launch Date/ Launch Site</b>
<b><i>Hellas-Sat (Greece)</i></b> Comm. Satellite	Lockheed Martin (International Launch Services, ILS) Atlas V	March Cape Canaveral Air Force Station, FL
<b><i>Unannounced</i></b> Comm. Satellite	Sea Launch Zenit 3SL	March Pacific Ocean Platform
<b><i>Asia Sat 4 (China)</i></b> Comm. Satellite	Lockheed Martin (International Launch Services, ILS) Atlas IIIB	April Cape Canaveral Air Force Station, FL
<b><i>Orb View 3 (U.S.)</i></b> Remote Sensing Satellite	Orbital Sciences Corp. Pegasus XL	April Vandenberg Air Force Base, CA
<b><i>Rainbow (U.S.)</i></b> Comm. Satellite	Lockheed Martin (ILS) Atlas V	May Cape Canaveral Air Force Station, FL
<b><i>Unannounced</i></b>	Sea Launch Zenit 3SL	2 <sup>nd</sup> Quarter Pacific Ocean Platform
<b><i>Thuraya (United Arab Emirates)</i></b> Comm. Satellite	Sea Launch Zenit 3SL	3 <sup>rd</sup> Quarter Pacific Ocean Platform
<b><i>SuperBird 6 (Japan)</i></b> Comm. Satellite	Lockheed Martin (ILS) Atlas IIAS	September Cape Canaveral Air Force Station, FL
<b><i>ROCSAT 2 (TAIWAN)</i></b> Remote Sensing	Orbital Sciences Taurus XL	October Vandenberg Air Force Base, CA
<b><i>Unannounced</i></b> Remote Sensing	Sea Launch Zenit 3SL	4 <sup>th</sup> Quarter Pacific Ocean Platform

As of: 1/24/03

Source: AST  
(202) 267-7989

# FAA Resources

## FAA Employment (Permanent Employees)<sup>1</sup>

	FY 02	FY 01 Revised
<b>Line of Business</b>		
Air Traffic Services (ATS).....	36,238	36,349
Regulation and Certification (AVR).....	6,422	6,195
Civil Aviation Security (ACS).....	*	1,221
Airports (ARP).....	461	472
Research and Acquisitions (ARA).....	1,894	1,858
Comm. Space Transportation (AST)....	58	44
Staff Offices.....	3,761	3,762
<b>Total.....</b>	<b>48,853</b>	<b>49,901</b>
<b>Region/Center/Headquarters (included in above total)</b>		
Aeronautical Center.....	1,581	1,582
Alaskan.....	1,399	1,406
Central.....	2,509	2,587
Eastern.....	5,350	5,411
Great Lakes.....	6,474	6,588
New England.....	1,947	1,996
Northwest Mountain.....	4,171	4,224
Southern.....	7,690	7,883
Southwest.....	5,335	5,430
Western-Pacific.....	5,435	5,661
Washington Headquarters (only) <sup>2</sup> .....	3,980	4,109
Washington Headquarters Field <sup>3</sup> .....	1,997	2,055
Technical Center.....	985	969

<sup>1</sup> Full time permanent and part time permanent employees only.

<sup>2</sup> Washington Headquarters employees physically located in FOB-10A and surrounding areas (i.e. Portals, Market Square, etc.).

<sup>3</sup> Washington Headquarters employees physically located in the Field (i.e. Technical Center, Aeronautical Center, etc.)

\* ACS transferred to Transportation Security Administration (TSA). The portion of ACS that remained in FAA will be included in FY03.

As of: 09/30/02

Source: APF-100  
(202) 267-9946

# FAA Percent Minority & Female Employment<sup>1</sup>

Lines of Business/Region/Center/Headquarters	% Minority		%Female	
	FY 02	FY 01 r	FY 02	FY 01r
AirTraffic Services (ATS).....	17.2	16.8	19.2	19.1
Regulation and Certification (AVR).....	18.4	17.9	28.5	28.3
Civil Aviation Security (ACS).....	*	27.7	*	42.3
Airports (ARP).....	24.7	23.3	38.8	39.6
Research and Acquisitions (ARA).....	28.7	27.5	37.2	38.2
Commercial Space Transportation (AST).....	48.2	45.4	25.9	31.8
Staff Offices.....	32.2	32.0	54.2	54.0
<b>Total.....</b>	<b>19.0</b>	<b>18.9</b>	<b>22.4</b>	<b>24.3</b>
Aeronautical Center.....	23.9	23.7	44.1	43.4
Alaskan.....	13.7	13.8	23.7	25.3
Central.....	14.1	14.2	24.8	24.7
Eastern.....	15.2	15.4	19.2	19.4
Great Lakes.....	10.7	10.7	20.1	20.6
New England.....	7.3	7.7	20.7	21.0
Northwest Mountain.....	11.9	12.0	22.1	22.7
Southern.....	20.5	20.3	19.6	19.9
Southwest.....	22.0	21.2	20.1	20.6
Western-Pacific.....	28.7	28.6	20.9	20.8
Washington Headquarters (only) <sup>2</sup> .....	33.5	32.5	43.9	45.0
Washington Headquarters Field <sup>3</sup> .....	18.9	18.1	31.8	31.0
Technical Center.....	21.0	20.1	31.8	32.4

<sup>1</sup> Full-time permanent, and part-time permanent employees only (FTE 1111 & 1132).

<sup>2</sup> Washington Headquarters employees physically located in FOB-10A and surrounding areas (i.e. Portals, Market Square, etc.).

<sup>3</sup> Washington Headquarters employees physically located in the Field (i.e. Technical Center, Aeronautical Center, etc.).

\* ACS transferred to Transportation Security Administration(TSA). The portion of ACS that remained in FAA will be included in FY03.

r Revised

As of: 09/30/02

Source: APF-100

(202) 267-9946

## Major Work Force Employment

	Employment <sup>1</sup>				
	FY03 Apr	FY02	FY01	%Chg. FY03 - FY02	Actual Change
Air Traffic Controller Work Force ATCS <sup>2</sup> (bargaining unit employees)	17,495	17,501	17,389	0.0%	-6
Traffic Management Coordinators <sup>2</sup> Operations Supervisors <sup>2</sup>	646	654	666	-1.2%	-8
Flight Service Stations	1,605	1,609	1,726	-0.2%	-4
Field Maintenance (210-211 only)	2,813	2,864	2,934	-1.8%	-51
Airports Work Force	7,765	7,901	8,188	-1.7%	-136
Research & Acquisition Work Force <sup>3</sup>	451	454	461	-0.7%	-3
Aircraft Certification	1,771	1,958	1,910	-9.6%	-187
Flight Standards Work Force	1,093	1,123	1,025	-2.7%	-30
	4,434	4,533	4,476	-2.2%	-99

<sup>1</sup> Full time permanent appointments (operations direct).

<sup>2</sup> Included in Air Traffic Controller Work Force Total.

<sup>3</sup> Includes direct operations, F&E, and R,E&D.

Note: Traffic Management Supervisors (TMS) are no longer included in Controller Work Force.

Security Work Force removed at this time incomplete data.

Source: APF-100

As of: 04/30/03

(202) 267-9946

# Labor Relations

	BARGAINING UNITS	LABOR AGREEMENTS	EMPLOYEES REPRESENTED
<b>Unions.....</b>	<b>46</b>	<b>23</b>	<b>38,934</b>
AFGE.....	11	7	1,530
AFSCME (HQ).....	5	0	2,064
LIUNA.....	1	1	171
NAATS.....	1	1	2,257
NAGE.....	3	3	327
NATCA (AT).....	4	3	16,756
NATCA (AF).....	2	1	1,468
NATCA (Other).....	8	0	1,613
NFFE.....	3	2	793
PAACE.....	3	2	402
PASS (AF/AEA).....	1	1	7,619
PASS (AVN).....	1	1	318
PASS (AFS).....	2	1	3,454
PASS (AIR).....	1	0	162

AFGE	--American Federation of Government Employees
AFSCME	--American Federation of State, County, and Municipal Employees
LIUNA	--Laborer's International Union of North America
NAATS	--National Association of Air Traffic Specialists
NAGE	--National Association of Government Employees
NACTA	--National Air Traffic Controllers Association
NFFE	--National Federation of Federal Employees
PAACE	--Professional Association of Aeronautical Center Employees
PASS	--Professional Airway System Specialists

Source: AHL-ZUU  
(202) 267-3375

As of: 2/20/03



# FAA Finances

## (In Millions of Dollars)

	FY 2002 <sup>1</sup>	FY 2003 <sup>2,3</sup>	FY 2004 <sup>3</sup>
	Actual	Est.	Est.
<b>Budget Authority</b>			
Grants-In-Aid (Obliquation Lim/Approp).....	3,475	3,400	3,400
Research, Engineering, & Development....	245	124	100
Facilities and Equipment.....	3,006	2,981	2,916
Operations.....	7,077	7,077	7,591
<b>Total.....</b>	<b>13,803</b>	<b>13,582</b>	<b>14,007</b>
<b>Obligations Incurred--Operations</b>			
<b>Appropriation by Line of Business</b>			
Air Traffic Services.....	5,477	5,764	6,097
Regulation and Certification.....	767	794	873
Civil Aviation Security.....	170	0	0
Research and Acquisitions.....	194	202	218
Commercial Space Transportation.....	12	12	13
Regions/Center Operations.....	86	89	85
Human Resources.....	69	71	82
Financial Services.....	49	52	50
Staff Offices.....	110	108	143
Emergency Response Fund	215	27	0
Information Services/CIO	0	5	30
<b>Total.....</b>	<b>7,149</b>	<b>7,124</b>	<b>7,591</b>
<b>Airport Grant Obligations (NET)</b>			
Primary Airports & Cargo.....	1,125	1,125	1,061
States/Territories/Insular/Alaska Supp.....	666	669	684
Carryover Entitlements.....	315	250	355
Discretionary Fund.....	1,202	1,192	1,213
<b>Total.....</b>	<b>3,308</b>	<b>3,236</b>	<b>3,313</b>
<b>Total FAA Outlays.....</b>	<b>13,096</b>	<b>13,371</b>	<b>14,162</b>
<b>Trust Fund Receipts from Excise Taxes</b>			
Passenger Ticket Tax.....	4,726	4,655	5,180
Passenger Flight Segment Tax.....	1,532	1,888	2,032
Waybill Tax.....	474	433	461
Fuel Tax .....	789	748	778
International Departure/Arrival Tax.....	1,282	1,426	1,526
Rural Airports Tax.....	80	75	83
Frequent Flyer Tax.....	148	155	158
Interest on Investment.....	860	708	709
Offsetting Collections.....	178	136	136
<b>Total.....</b>	<b>10,069</b>	<b>10,224</b>	<b>11,063</b>

Numbers may not add due to rounding.

<sup>1</sup> FY02 includes Emergency Supplemental Funding per P.L. 107-117(Operations, \$200M; F&E, \$108.5M; R,E&D, \$50M; and Grants-in-Aid, \$175M).

<sup>2</sup> FY03 estimates reflect the Administration's 2003 policy proposals because an FY03 Appropriation had not been enacted at the time the FY04 President's Budget was prepared.

<sup>3</sup> FY03 and FY04 exclude Civil Service Retirement System and Federal Employee Health Benefits accruals.

Source: ABU-100  
(202) 267-9070

As of: 2/6/03

# FAA NAS Operational Facilities and FAA Aircraft (As of December 31)

	2002	2001	2000
<b>NAS Operational Facilities<sup>1</sup></b> .....	<b>40,746</b>	<b>40,910</b>	<b>40,921</b>
Communications.....	14,194	14,145	14,103
Automation.....	4,049	4,000	3,889
Environment.....	6,494	6,552	6,620
Navigation.....	11,104	11,210	11,211
Surveillance.....	1,871	1,833	1,794
Weather.....	3,034	3,170	3,304
<b>Air Traffic Control Facilities<sup>2</sup></b>			
Air Route Traffic Control Center.....	21	21	21
Airport Traffic Control Tower.....	449	448	496
Flight Service <sup>3</sup> .....	76	76	75
Flight Service Stations.....	16	16	14
Automated Flight Service Stations.....	60	60	61

<sup>1</sup> Excludes non-federal facilities and foreign facilities.

<sup>2</sup> Included in NAS operational facilities.

<sup>3</sup> Flight Service include Flight Service Stations and Automated Flight Service Stations.

As of: 12/31/02

Source: AOP-200  
(202) 267-3628

# FAA Officials

## Washington Headquarters

Routing Symbol	Officials
<b>AOA*</b>	<b>Administrator</b> <b>Marion C. Blakey, 202-267-3111</b> David Mandell, Chief of Staff, 202-267-3111 Louise E. Maillett, Senior Counsel to AOA, 202-267-7417
<b>ADA*</b>	<b>Deputy Administrator</b> <b>Bobby Sturgell, 202-267-8111</b> Shirley S. Miller, Senior Advisor to ADA, 202-267-8111
<b>AOZ</b>	<i>Free Flight</i> <i>Director, John Thornton, 202-220-3300</i>
<b>ASI</b>	<i>Security and Investigations</i> <i>Director, Eugene Ross Hamory, 202-267-8537</i>
<b>ABA</b>	<b>Assistant Administrator for Financial Services</b> <b>John F. Hennigan, CFO (Actg.), 202-267-9105</b> Deputy, John F. Hennigan, 202-267-8928
<b>ABU</b>	<i>Office of Budget</i> <i>Director, Alex Keenan, 202-267-8010</i>
<b>AFM</b>	<i>Office of Financial Management</i> <i>Director, David M. Zavada, 202-267-3018</i>
<b>APF</b>	<i>Office of Cost and Performance Management</i> <i>Director, Tim Lawler, 202-267-7140</i>
<b>ACR</b>	<b>Assistant Administrator for Civil Rights</b> <b>Fanny Rivera, 202-267-3254</b> Deputy, Barbara A. Edwards, 202-267-3264
<b>AEP*</b>	<b>Asst. Admin. for Aviation Policy, Planning &amp; Environment</b> <b>Sharon L. Pinkerton, 202-267-3927</b> Deputy, Vacant, 202-267-3927
<b>AEE</b>	<i>Office of Environment and Energy</i> <i>Director, Carl Bureson, 202-267-3576</i>
<b>APU</b>	<i>Office of Aviation Policy and Plans</i> <i>Director, John M. Rodgers, 202-267-3274</i>
<b>AGC*</b>	<b>Chief Counsel</b> <b>Andrew B. Steinberg, 202-267-3222</b> Deputy, James Whitlow, 202-267-3773
<b>AGI</b>	<b>Asst. Administrator for Government &amp; Industry Affairs</b> <b>David Balloff, 202-267-3277</b> Deputy, David V. Broome, 202-267-8211
<b>AHR</b>	<b>Asst. Administrator for Human Resource Management</b> <b>Glenda Tate, 202-267-3456</b> Deputy, Mary Ellen Dix, 202-267-3850
<b>AHA</b>	<i>Office of the Accountability Board</i> <i>Director, Maria Fernandez-Greczmiel, 202-267-3065</i>

\* Updated this issue  
As of: 05/16/03

Source: APF-100  
(202) 267-9946

# FAA Officials

## Washington Headquarters--(Cont)

Routing Symbol	Officials
AHD	<i>Office of Organization, Learning &amp; Development Director, Barbara J. Smith (Atcg.), 202-267-9041</i>
AHL	<i>Office of Labor &amp; Employee Relations Director, Melvin Harris, 202-267-3979</i>
AHM	<i>Center for Management Development Director, Barbara J. Smith, 386-446-7136</i>
AHP	<i>Office of Personnel Director, Roger M. Edwards, 202-267-3979</i>
AIO	<b>Assistant Administrator for Information Services Daniel J. Mehan, CIO, 202-493-4570</b> Deputy, Arthur Pyster, 202-493-4570
AIS	<i>Office of Information Systems Security Director, Michael F. Brown, 202-267-7104</i>
APA*	<b>Assistant Administrator for Public Affairs Greg Martin, 202-267-3883</b> Deputy, Laura Brown, 202-267-3883
API*	<b>Asst. Administrator for International Aviation Douglas E. Lavin, 202-267-3033</b> Deputy, Vacant, 202-267-3927
AIA*	<i>Office of International Aviation Director, Ava L. Wilkerson, 202-267-3213</i>
ARC	<b>Assistant Administrator for Region/Center Operations Ruth Leverenz, 817-222-5001 / 202-267-7369</b>
ASY	<b>Assistant Administrator for System Safety Christopher A. Hart, 202-267-3611</b> Deputy, Daniel C. Hedges, 202-267-3611
ARA	<b>Associate Administrator for Research and Acquisitions Charles E. Keegan, 202-267-7222</b> Deputy, Dennis DeGaetano, 202-267-7222
AAR	<i>Office of Aviation Research Director, Herman Rediess, Ph.D., 202-267-9251</i>
ABZ	<i>Office of Business Management Director, Lauraline Gregory, 202-267-3616</i>
ACA*	<i>Office of Competitive Sourcing Acquisition Director, Joann Kansier, 202-385-7749</i>
AND	<i>Office of Communications, Navigation, and Surveillance Sys. Director, Daniel P. Salvano, 202-267-3200</i>
ASD	<i>Office of System Architecture and Investment Analysis Director, John A. Scardina, 202-385-7100</i>
ASU	<i>Office of Acquisitions Director, Gilbert B. Devey, 202-267-8513</i>
AUA	<i>Office of Air Traffic Systems Development Director, Gregory D. Burke, 202-493-0237</i>

# FAA Officials

## Washington Headquarters--(Cont.)

Routing Symbol	Officials
ARP	<b>Associate Administrator for Airports</b> <b>Woodie Woodward, 202-267-9471</b> Deputy, Paul L. Galis, 202-267-8738
AAS	<i>Office of Airport Safety and Standards</i> Director, David L. Bennett, 202-267-3053
APP	<i>Office of Airport Planning &amp; Programming</i> Director, Catherine M. Lang, 202-267-8775
AST*	<b>Assoc. Adm. for Commercial Space Transportation</b> <b>Patricia Grace Smith, 202-267-7793</b> Deputy, Dr. George C. Nield, 202-267-7848
ATS*	<b>Associate Administrator for Air Traffic Services</b> <b>Steven J. Brown, 202-267-7111</b> Deputy, Peter H. Challan, 202-267-3133
AAF	<i>Airway Facilities Service</i> Director, Steven B. Zaidman, 202-267-8181
AAI*	<i>Air Traffic Service</i> Director, David B. Johnson, 202-267-3666
ARI	<i>Runway Safety</i> Director, William S. Davis, 202-385-4778
ARS	<i>Air Traffic System Requirements Service</i> Director, James H. Washington, 202-385-7500
ASC	<i>Office of System Capacity and Requirements</i> Director, Paula R. Lewis, 202-267-7370
ATB	<i>Terminal Business Service</i> Director, William Voss, 202-264-3000
AIQ	<i>Independent Operational Test and Evaluation</i> Director, A. Martin Phillips, 202-267-3341
AVR	<b>Associate Administrator for Regulation &amp; Certification</b> <b>Nicholas A. Sabatini, 202-267-3131</b> Deputy, Peggy Gilligan, 202-267-7804
AAI	<i>Office of Accident Investigation</i> Director, Steven B. Wallace, 202-267-9612
AAM	<i>Office of Aviation Medicine</i> Director, Jon L. Jordan, MD, 202-267-3535
AFS	<i>Flight Standards Service</i> Director, James Ballough, 202-267-8237
AIR	<i>Aircraft Certification Service</i> Director, John J. Hickey, 202-267-8235
ARM	<i>Office of Rulemaking</i> Director, Anthony F. Fazio, 202-267-9677
<b>Duty Officer</b>	<b>(202) 267-3333</b>

# FAA Officials

## Major Field Organizations

Routing Symbol	Officials
<b>AAL</b> .....	<b>Alaskan Region, Regional Administrator</b> <b>Patrick N. Poe, 907-271-5645</b> 222 West 7th Avenue, Box 14 Anchorage, Alaska 99513-7587 Duty Officer, 907-271-5936
<b>ACE</b> .....	<b>Central Region, Regional Administrator</b> <b>Christopher Blum, 816-329-3050</b> 901 Locust Kansas City, Missouri 64106 Duty Officer, 816-329-3000
<b>ACT</b> .....	<b>William J. Hughes Technical Center, Director</b> <b>Anne Harlan, Ph.D., 609-485-6641</b> Atlantic City International Airport New Jersey 08405 Duty Officer, 609-485-6482
<b>AEA</b> .....	<b>Eastern Region, Regional Administrator</b> <b>Arlene B. Feldman, 718-553-3000</b> 1 Aviation Plaza 159-30 Rockaway Blvd. Jamaica, New York 11434-4809 Duty Officer, 718-553-3100
<b>AGL</b> .....	<b>Great Lakes Region, Regional Administrator</b> <b>Cecelia Hunziker, 847-294-7294</b> 2300 East Devon Avenue Des Plaines, Illinois 60018 Duty Officer, 847-294-8400
<b>AMC</b> .....	<b>Mike Monroney Aeronautical Center, Director</b> <b>Lindy Ritz, 405-954-4521</b> 6500 South MacArthur Oklahoma City, Oklahoma 73125 Duty Officer, 405-954-3583

# FAA Officials

## Major Field Organizations--(Cont.)

Routing Symbol	Officials
<b>ANE</b> .....	<b>New England Region, Regional Administrator</b> <b>Amy Lind Corbett, 781-238-7020</b> 12 New England Executive Park Burlington, Massachusetts 01803 Duty Officer, 781-238-7001
<b>ANM</b> .....	<b>Northwest Mountain Region, Regional Administrator</b> <b>Tom Busker (Actg.), 425-227-2001</b> 1601 Lind Avenue, S.W. Renton, Washington 98055-4056 Duty Officer, 425-227-2000
<b>ASO</b> .....	<b>Southern Region, Regional Administrator</b> <b>Carolyn Blum, 404-305-5000</b> 1701 Columbia Avenue College Park, Georgia 30337 Duty Officer, 404-305-5180
<b>ASW</b> .....	<b>Southwest Region, Regional Administrator</b> <b>Ruth Leverenz, 817-222-5001</b> 2601 Meacham Blvd. Ft. Worth, Texas 76137-4298 Duty Officer, 817-222-5006
<b>AWP</b> .....	<b>Western-Pacific Region, Regional Administrator</b> <b>William C. Withycombe, 310-725-3550</b> 15000 Aviation Boulevard Hawthorne, California 90261 Duty Officer, 310-725-3300

# FAA Officials

---

## International Area Offices

---

Routing Symbol	Officials
<b>AEU</b> .....	<b>Europe, Africa, &amp; Middle East Area Office, Director</b> <b>Paul Feldman, 011-322-508-2700</b> American Embassy, Brussels PSC 82 Box 002 APO AE 09724-1011
<b>ALC</b> .....	<b>Latin America &amp; Caribbean Area Office, Director</b> <b>Joaquin Archilla, 305-716-3300</b> 8600 NW 36th Street Miami, FL 33166
<b>APC*</b> .....	<b>Asia-Pacific Area Office, Director</b> <b>Elizabeth E. Erickson, 011-65-6540-4114</b> American Embassy 27 Napier Road Singapore 258508



# FAA STRATEGIC GOALS & FY03 PERFORMANCE GOALS

## SAFETY

**Strategic Goal:** *By 2007, reduce U.S. aviation fatal accident rates by 80% from 1996 levels.*

### **Strategies for Change:**

- Accident prevention.
- Safety Information Sharing and Analysis.
- Certification and Surveillance.

### **FY 2003 GPRA Performance Goals:**

***Commercial Air Carrier Fatal Accident Rate:*** Reduce commercial fatal accidents per 100,000 departures to .033 or less.

***General Aviation Fatal Accidents:*** Reduce the number of general aviation fatal accidents to 374 or less.

### **FY 2003 Supplemental Goals:**

***Runway Incursions:*** Reduce the number of category A/B runway incursions to 44 or less.

***Operational Errors:*** Reduce the number of category A/B operational errors to 642 or less.

## SECURITY

**Strategic Goal: Prevent security incidents in the aviation system.**

*The goal is changing in light of September 11, 2001 and the transfer of functions to the Transportation Security Administration (TSA). FAA's focus has been largely on the transition to TSA and on information security.*

## SYSTEM EFFICIENCY

**Strategic Goal:** *Provide an aerospace transportation system that meets the needs of users and is efficient in the application of FAA and aerospace resources.*

### **Strategies for Change:**

- Free Flight and Operational Evolution.
- NAS Modernization.
- System Integration.

### **FY 2003 GPRA Performance Goals:**

***On-Time Arrival:*** Increase the percentage of aircraft arriving no later than 15 minutes after the scheduled arrival time to 78.2%.

***Aircraft Noise Exposure:*** Limit the number of people in the U.S. exposed to significant aircraft noise to 437,000 or less.

### **FY 2003 Supplemental Goals:**

***Airport Daily Arrival Capacity:*** Maintain an average airport daily arrival capacity of 49.12 (in thousands) at the 35 OEP airports.

***Airport Arrival Efficiency Rate:*** Achieve an airport arrival efficiency rate of 95.49 percent at the 35 OEP airports.

***People Benefiting from Noise Projects.*** Increase the cumulative number of people in residential communities that benefit from noise compatibility projects to 12,500.

## **ORGANIZATIONAL EXCELLENCE GOALS**

### **People: The Foundation of Accomplishment**

#### ***The model work environment at FAA***

Create and maintain a hospitable work environment that supports a productive and skilled work force reflective of the Nation's diversity to accomplish the mission and better serve our customers now and into the 21<sup>st</sup> century.

#### ***Strategies for Change:***

- Intellectual Capital.
- Managing the Diverse Work Force.
- Quality of Work Life.

### **Reform: The Framework for Accomplishment**

FAA is reforming how it does business. The ATO is FAA's major structural reform to integrate modernization, operation, and maintenance of air traffic management. It focuses responsibility on a Chief Operating Officer and bases accountability on results.

#### ***Strategies for Change:***

- Acquisition Reform.
- Personnel Reform.
- Financial Reform.

## **ORGANIZATIONAL EXCELLENCE GOALS (continued)**

### **Environment: Our Responsibility**

*Environmental issues, especially aviation noise, are a key challenge to growth and prosperity of civil aerospace in the 21<sup>st</sup> century. Aerospace environmental impact must be reduced while not constraining aviation and commercial space transportation.*

#### **Strategies for Change:**

- Understanding Aerospace Environmental Impacts.
- Reducing Aerospace Environmental Impacts.
- Quantify and Mitigate Environmental Impacts of FAA Activities.

### **Global Leadership: Commitment to Worldwide Improvements**

*FAA is committed to working for worldwide improvements in safety, security and system efficiency.*

#### **Strategies for Change:**

- International Safety Oversight.
- Global Development and Implementation of Aerospace Traffic Management.
- International Regulatory Harmonization.

### **FY 2003 Performance Goals:**

**Major Acquisition Milestones Met:** Meet 80% of budget and schedule milestones for critical programs published in the Capital Investment Plan (CIP).

**Customer Satisfaction:** Achieve a score of at least 62 on the American Customer Satisfaction Index (ACSI).

**President's Management Agenda:** Achieve a "Yellow Light" in the five areas of the President's Management Agenda on the DOT Scorecard.

(Budget to Performance, Competitive Sourcing, E-Government, Financial Management, and Human Capital)



## **FAA VISION**

*To provide the safest, most efficient and responsive aerospace system in the world, and to be the best Federal employer, continuously improving service to customers and employees.*

### **FAA Mission**

*FAA provides a safe, secure, and efficient global aerospace system that contributes to national security and the promotion of US aerospace safety.*

*As the leading authority in the international aerospace community, FAA is responsive to the dynamic nature of customer needs, economic conditions, and environmental concerns.*

# ***FAA VALUES***

## ***We Believe in***

- ☆ Trust*
- ☆ Integrity*
- ☆ Honesty*
- ☆ Involvement*
- ☆ Teamwork*
- ☆ Diversity*
- ☆ Respect*

## ***We Are Committed To***

- ☆ Responsiveness*
- ☆ Quality*
- ☆ Timeliness*
- ☆ Fiscal Responsibility*
- ☆ Accountability*
- ☆ Communication*

## ***We Will Achieve These Values By***

- ☆ Giving people what they need, then letting them do their jobs.*
- ☆ Making timely decisions at the lowest level and respecting them.*
- ☆ Committing our best to our customers.*
- ☆ Valuing our people.*
- ☆ Being open to new ideas.*
- ☆ Speaking out for what we believe, even when it is unpopular.*
- ☆ Recognizing each person's contributions and realizing each person's full potential.*
- ☆ Collaborating across organizations.*
- ☆ Taking pride in what we do.*