



U.S. Department
of Transportation

**Federal Aviation
Administration**

ADMINISTRATOR'S FACT BOOK

February 2002

(Updated quarterly)

Produced by:
Assistant Administrator for Financial Services
Office of Cost and Performance Management
Standards and Information Division

Web site: <http://www.atctraining.faa.gov/factbook>



FAA VISION

To provide the safest, most efficient and responsive aerospace system in the world, and to be the best Federal employer, continuously improving service to customers and employees.

FAA Mission

FAA provides a safe, secure, and efficient global aerospace system that contributes to national security and the promotion of US aerospace safety.

As the leading authority in the international aerospace community, FAA is responsive to the dynamic nature of customer needs, economic conditions, and environmental concerns.

FAA VALUES

We Believe in

- ☆ *Trust*
- ☆ *Integrity*
- ☆ *Honesty*
- ☆ *Involvement*
- ☆ *Teamwork*
- ☆ *Diversity*
- ☆ *Respect*

We Are Committed To

- ☆ *Responsiveness*
- ☆ *Quality*
- ☆ *Timeliness*
- ☆ *Fiscal Responsibility*
- ☆ *Accountability*
- ☆ *Communication*

We Will Achieve These Values By

- ☆ *Giving people what they need, then letting them do their jobs.*
- ☆ *Making timely decisions at the lowest level and respecting them.*
- ☆ *Committing our best to our customers.*
- ☆ *Valuing our people.*
- ☆ *Being open to new ideas.*
- ☆ *Speaking out for what we believe, even when it is unpopular.*
- ☆ *Recognizing each person's contributions and realizing each person's full potential.*
- ☆ *Collaborating across organizations.*
- ☆ *Taking pride in what we do.*

Table of Contents

FAA Vision and Mission	Inside Front Cover
FAA Values	Inside Back Cover

Safety

Aviation Accidents by Type of Operations	3*
Aviation Accident Rates by Type of Operation	4*
Airspace Incidents by Incident Type	5*
Airspace Incident Rates by Incident Type	6*
NTSB U.S. Transportation Fatalities	7

FAA Air Traffic

FAA Air Traffic Activity	8*
Air Route Traffic Control Center Activity	9*
50 Busiest FAA Air Traffic Control Towers	10*
50 Busiest Approach Control Facilities	12*
Automated Flight Service Station Activity	14*

Airports

Number of U.S. Airports	16
National Airspace Systems Delays	17*

Aircraft

U.S. Air Carrier Activity	18
U.S. General Aviation Activity	19*
Aircraft Certification Service	20*

Airmen

Active Pilots and Nonpilots	21
-----------------------------------	----

Industry Trends

Scheduled U.S. Air Carrier Traffic & Fin. Trends	22*
U.S. Commercial Space Trans. Financial Trends	23*
Aviation Forecasts	24

<i>FAA Regional Boundaries Map</i>	<i>25</i>
--	-----------

FAA Organizational Chart	Center Fold
--------------------------------	-------------

Table of Contents (cont.)

Commercial Space Transportation

Associate Administrator for Commercial Space Transportation (AST).....	28
AST Licensing and Industry Activity.....	29*
U.S. Commercial Space Launch Schedule.....	30*

FAA Resources

FAA Employment	31*
FAA Percent Minority and Women Employment	32*
FAA Major Work Force Employment	33*
Labor Relations	34
FAA Finances.....	35
FAA Facilities and Aircraft.....	36

Organization

FAA Officials–Washington Headquarters	37*
FAA Officials–Major Field Organizations	40*
FAA Officials--International Offices	42*
FAA Goals and Objectives	43

For further information call APF-100 (202-267-9946)

*Updated this issue

Distribution: A-WXYZE-3; A-FOF-O(STD)

Aviation Accidents by Type of Operation

Type of Operation	Year	Jan	Feb	Mar	Apr	May	Jun	Jul	Aug	Sep	Oct	Nov	Dec	Year Total
Large Air Carrier	2000	2	7	7	6	4	2	3	5	6	4	6	5	57
	2001	1	4	3	4	3	1	2	6	7	2	4	1	38
Commuter	2000	0	3	3	0	1	1	0	1	2	1	0	0	12
	2001	1	0	0	1	1	0	1	1	0	2	0	0	7
Air Taxi	2000	5	5	6	6	7	4	9	9	11	6	7	5	80
	2001	7	5	6	6	7	6	8	9	5	6	1	6	72
General Aviation	2000	90	105	130	158	172	191	247	219	179	149	102	95	1,837
	2001	104	107	121	146	157	192	246	203	119	122	116	88	1,721
Rotorcraft*	2000	14	12	20	21	25	20	22	15	18	16	7	17	207
	2001	11	16	18	9	16	17	24	20	18	11	14	6	180

* Part 135 and US registered general aviation rotocraft accidents.

Sep 2001 does include the 4 aircraft destroyed in the terrorist attacks of Sep. 11th

Note: Preliminary data and subject to change.

As of: 01/14/02

Source: AAI-200

(202) 267-3279

Aviation Accident Rates by Type of Operation

Type of Operation	1997		1998		1999		2000		% Chg 00-99	
	Number	Rate	Number	Rate	Number	Rate	Number	Rate	Number	Rate
Large Air Carriers.....	48	.31	50	.29	52	.29	57	.30	10%	3%
Commuter.....	16	1.6	8	2.3	13	4.8	12	2.18	-8%	-55%
Air Taxi.....	83	3.64	78	3.03	77	2.71	80	3.29	4%	21%
General Aviation.....	1,855	7.28	1,908	7.12	1,908	7.05	1,837	5.96	-4%	-15%

Accident Rates are per 100,000 Flight Hours

Rotocraft rates discontinued, currently under review

Note: Preliminary data and subject to change.

As of: 1/14/01

Source: AAI-200

(202) 267-3279

Airspace Incidents by Incident Type

Incident Type	Year	Jan	Feb	Mar	Apr	May	Jun	Jul	Aug	Sep	Oct	Nov	Dec	Year Total
Near Midair Collisions	2000	14	16	25	17	24	21	26	24	20	22	12	18	239
	2001	16	17	19	14	29	28	15	20	17	14	9	7	205
Pilot Deviations	2000	125	153	181	177	199	173	169	184	143	153	134	108	1,899
	2001	118	112	149	143	183	154	146	176	170	226	271	136	1,984
Operational Errors	2000	65	85	101	94	114	115	103	88	100	97	99	77	1,138
	2001	69	82	111	101	112	108	122	130	87	104	91	67	1,184
Vehicle Pedestrian Deviations	2000	43	42	37	51	46	62	49	43	58	43	43	30	547
	2001	38	38	30	49	37	38	53	41	42	40	33	21	460
Surface Incidents	2000	89	103	114	119	137	149	128	127	122	118	100	84	1,390
	2001	96	102	103	112	125	125	107	116	98	113	93	55	1,245
Runway Incursions*	2000	25	24	36	33	40	44	42	48	33	41	33	32	431
	2001	24	33	39	35	37	42	37	31	23	38	24	18	381

Note: Preliminary data and subject to change.

N/A: Not available at time of update.

As of: 1/29/02

*As of: 1/30/02

Source: ATX-400

(202) 267-9630

*ATS

(202) 385-4788

Airspace Incident Rates by Incident Type

Incident Type	Percent Change									
	1998		1999		2000		2001		1998 - 1999 (4)	
	Number	Rate	Number	Rate	Number	Rate	Number	Rate	Number	Rate
Operational Errors (1).....	894	.56	992	.60	1,138	.69	1,184	.74	4%	7%
Pilot Deviations (2).....	1,594	1.00	1,629	.99	1,899	1.15	1,984	1.21	4%	5%
Surface Incidents (3).....	832	1.26	1,048	1.53	1,390	2.05	1,245	1.86	-10%	-9%

9

(1) Per 100,000 Facility Activities

(2) Per 100,000 Flight Hours

(3) Per 1,000,000 Airport Operations

(4) Calculations use fifteen decimal places for rates (rounded two places for display).

Note: 2001 data preliminary and subject to change.

As of: 1/29/02

Source: ATX-400

(202) 385-4802

National Transportation Safety Board

1999-2000 U.S. Transportation Fatalities

	1999	2000 ¹
Highway ¹		
Passenger cars.....	20,862	20,455
Light Trucks and Vans.....	11,265	11,439
Pedestrians.....	4,939	4,727
Motorcycles.....	2,483	2,680
Pedalcycles.....	754	738
Medium and heavy trucks.....	759	746
Buses.....	59	31
All Other.....	596	984
Total.....	41,717	41,800
Grade Crossings ²	(402)	(425)
Rail		
Intercity ³		
Trespassers and nontrespassers..... ⁴	530	544
Employees and contractors.....	43	28
Passengers on trains.....	14	4
Transit ⁵		
Light, heavy, and commuter rail.....	196	194
Total.....	783	770
Marine		
Recreational Boating.....	734	701
Cargo Transport.....	47	36
Commercial fishing..... ⁶	57	41
Commercial Passengers.....	36	23
Total.....	874	801
Aviation		
General Aviation.....	630	592
Airlines.....	12	92
Air Taxi.....	38	71
Commuter.....	12	5
Foreign/Unregistered..... ⁷	1	17
Total.....	693	777
Pipeline		
Gas.....	22	37
Liquids.....	4	1
Total.....	26	38
GRAND TOTAL.....	44,093	44,186

1 2000 figures are preliminary estimates. Aviation data come from the NTSB; all other data from DOT.

2 Grade crossing fatalities are not counted as a separate category for determining the grand totals because they are included in the highway and rail categories, as appropriate.

3 Data reported to Federal Rail Administration (FRA).

4 Does not include motor vehicle occupants killed at grade crossings.

5 Data reported to the FTA. Fatalities for commuter rail operations may also be reported to the FRA and may be included in the intercity railroad fatalities.

6 Refers to only operational fatalities.

7 Includes non-U.S. registered aircraft involved in accidents in the U.S.

Air Traffic

FAA Air Traffic Activity (In Thousands)

Aircraft Handled by	Jan-Oct	Jan-Oct	Jan-Dec
FAA ARTCC's	2001*	2,000	2000
Air Carrier.....	20,410	20,945	25,080
Air Taxi.....	6,981	6,810	8,164
General Aviation.....	6,743	7,373	8,634
Military.....	3,407	3,568	4,178
TOTAL....	37,541	38,696	46,056
Airport Operations			
Logged by FAA Towers			
Air Carrier.....	11,874	12,452	14,892
Air Taxi.....	7,789	7,766	9,230
General Aviation.....	20,736	22,515	25,982
Military.....	1,726	1,697	2,012
TOTAL....	42,125	44,430	52,116
Instrument Operations			
Logged by FAA Towers			
Air Carrier.....	12,881	13,683	16,288
Air Taxi.....	9,476	9,461	11,239
General Aviation.....	16,378	17,588	20,391
Military.....	3,008	2,932	3,423
TOTAL....	41,743	43,664	51,341
Flight Services			
Logged by: **	Jan-Dec	Jan-Dec	
	2001*	2000r	
Flight Service Stations.....	872	830	
Automated Flight Service Stations.....	29,028	29,224	
TOTAL....	29,900	30,054	

*Preliminary r Revised

As of: 1/29/02

Source: APO-130

(202) 267-3350

**Source: ATX-400

(202) 385-4734

Air Route Traffic Control Center Activity

CY 2000 Rank	Center	Aircraft Handled (000's)		
		Jan-Oct 2001*	Jan-Oct 2000	Jan-Dec 2000*
1	Cleveland, OH.....	2,590	2,696	3,206
2	Atlanta, GA.....	2,446	2,481	2,956
3	New York, NY.....	2,375	2,439	2,921
4	Chicago, IL.....	2,375	2,459	2,920
5	Washington, DC.....	2,277	2,323	2,772
6	Indianapolis, IN.....	2,162	2,260	2,685
7	Jacksonville, FL.....	1,805	1,919	2,295
8	Memphis, TN.....	1,836	1,881	2,232
9	Fort Worth, TX.....	1,808	1,878	2,228
10	Kansas City, KS.....	1,807	1,852	2,200
11	Miami, FL.....	1,839	1,819	2,193
12	Los Angeles, CA.....	1,777	1,809	2,165
13	Minneapolis, MN.....	1,747	1,807	2,143
14	Houston, TX.....	1,709	1,757	2,095
15	Albuquerque, NM.....	1,503	1,757	2,052
16	Boston, MA.....	1,591	1,606	1,906
17	Denver, CO.....	1,427	1,451	1,730
18	Oakland, CA.....	1,393	1,406	1,684
19	Salt Lake City, UT.....	1,292	1,298	1,545
20	Seattle, WA.....	1,167	1,221	1,451
21	Anchorage, AK.....	506	481	567
22	Guam **	109	93	112

*Preliminary

**Center Radar Approach Control (CERAP)

As of: 8/31/01

Source: APO-130
(202) 267-3350

50 Busiest FAA Airport Traffic Control Towers

CY 2000 Rank	Tower and State	Airport Operations (000's)		
		Jan-Oct 2001*	Jan-Oct 2000	Jan-Dec 2000
1	Atlanta International, GA.....	747	767	913
2	Chicago/O'Hare Int'l., IL.....	770	761	909
3	Dallas/Ft. Worth Int'l., TX.....	683	728	866
4	Los Angeles Int'l, CA.....	637	651	784
5	Phoenix Sky Harbor Int'l, AZ.....	516	533	639
6	Detroit Metro Wayne Co., MI.....	447	470	555
7	Denver International, CO.....	435	442	529
8	Minneapolis-St. Paul Int'l, MN.....	425	439	522
9	Las Vegas/McCarran Int'l, NV.....	424	433	521
10	Miami International, FL.....	397	431	517
11	Boston/Logan Int'l, MA.....	411	430	508
12	Houston/G Bush Intercont'l, TX.....	404	409	491
13	Lambert-St. Louis Int'l, MO.....	407	408	484
14	Philadelphia Int'l, PA.....	392	404	484
15	Van Nuys, CA.....	377	407	483
16	Washington Dulles Int'l, VA.....	359	408	480
17	Covington/Cincinnati Int'l, KY.....	313	405	478
18	Charlotte/Douglas Int'l, NC.....	394	385	460
19	Newark International, NJ.....	380	382	457
20	Metropolitan Oakland Int'l.....	327	375	449
21	Pittsburgh International, PA.....	378	376	448
22	Seattle Tacoma Int'l, WA.....	345	375	446
23	San Francisco Int'l, CA.....	333	363	431
24	Denver/Centennial.....	317	346	398
25	La Guardia, NY.....	323	321	392

*Preliminary ¹ Missing 2001 data

As of: 10/31/01

50 Busiest FAA Airport Traffic Control Towers

CY 2000 Rank	Tower and State	Airport Operations (000's)		
		Jan-Oct 2001*	Jan-Oct 2000	Jan-Dec 2000
26	Santa Ana/John Wayne, CA.....	326	328	388
27	Memphis International, TN.....	331	320	386
28	Long Beach/Daugherty, CA.....	306	323	379
29	Daytona Beach Int'l, FL.....	319	318	372
30	Orlando/Sanford, FL ¹	297	306	372
31	Phoenix-Deer Valley, AZ.....	276	304	371
32	Salt Lake City Int'l, UT.....	309	309	367
33	Orlando International, FL.....	277	306	366
34	Seattle/Boeing Field, WA.....	256	316	366
35	John F. Kennedy Int'l, NY.....	275	302	359
36	Honolulu International, HI.....	278	288	345
37	Washington National, DC.....	249	288	343
38	Pontiac/Oakland Co. Int'l, MI ¹	225	292	334
39	Cleveland Hopkins Int'l, OH.....	250	281	332
40	Prescott/E. A. Love Field, AZ.....	276	267	320
41	Anchorage International, AK.....	265	280	318
42	Portland International, OR.....	252	268	317
43	Baltimore/Wash. Int'l, MD.....	273	261	315
44	Fort Worth Meacham, TX.....	205	258	301
45	San Jose International, CA.....	233	252	300
46	Chicago Midway, IL.....	233	253	298
47	Raleigh/Durham Int'l, NC.....	237	247	296
48	Fort Lauderdale/Hollywood, FL.....	245	242	292
49	Teterboro, NJ.....	209	235	283
50	Tampa International, FL.....	221	233	279

50 Busiest Radar Approach Control Facilities

CY 2000 Rank	Facilities/State	Instrument Ops (000s)		
		Jan-Oct 2001*	Jan-Oct 2000	Jan-Dec 2000
1	Southern Calif. TRACON, CA.....	1,953	2,049	2,451
2	New York TRACON, NY.....	1,713	1,754	2,086
3	Chicago TRACON, IL.....	1,164	1,180	1,399
4	Dallas/Ft Worth, TRACON, TX.....	1,116	1,176	1,394
5	Atlanta International, GA ¹	276	966	1,147
6	Bay TRACON, CA.....	886	899	1,073
7	Miami International, FL.....	789	827	996
8	Houston TRACON, TX.....	701	718	856
9	Phoenix TRACON, AZ.....	603	636	763
10	Washington Dulles Int'l, VA.....	582	631	746
11	Denver TRACON, CO.....	600	603	718
12	Detroit TRACON, MI.....	595	654	713
13	Minneapolis TRACON, MN ¹	510	595	699
14	Philadelphia International, PA.....	558	577	686
15	Las Vegas TRACON, NV.....	538	569	678
16	Orlando International, FL.....	525	548	655
17	San Juan CERAP, PR.....	538	521	638
18	Boston TRACON, MA.....	530	541	637
19	Washington National, DC.....	509	528	630
20	St Louis TRACON, MO.....	536	533	628
21	Daytona Beach Int'l, FL.....	516	527	619
22	Seattle/Tacoma TRACON, WA.....	507	518	613
23	Covington/Cincinnati Int'l, KY.....	418	518	610
24	Tampa International, FL.....	483	497	594
25	Charlotte/Douglas Int'l, NC.....	498	488	583

* Preliminary ¹Missing 2001 data

Source: APO-130
(202) 267-3350

As of: 10/31/01

50 Busiest Radar Approach Control Facilities

CY 2000 Rank	Facilities/State	Instrument Ops (000's)		
		Jan-Oct 2001*	Jan-Oct 2000	Jan-Dec 2000
26	Salt Lake City TRACON, UT.....	481	486	572
27	Pittsburgh International, PA.....	460	465	551
28	Baltimore-Washington Int'l, MD.....	457	451	540
29	Honolulu CERAP, HI'.....	167	428	512
30	Jacksonville Int'l, FL.....	401	416	502
31	Sacramento TRACON, CA.....	398	392	461
32	San Antonio Int'l, TX.....	367	374	440
33	Memphis International, TN.....	404	398	439
34	Cleveland Hopkins Int'l, OH.....	328	362	426
35	Port Columbus Int'l, OH.....	329	336	393
36	Yankee TRACON, CT.....	319	328	385
37	Palm Beach International, FL.....	326	315	384
38	Corpus Christi, TX.....	317	329	382
39	Portland TRACON, OR.....	306	323	381
40	Pensacola TRACON, FL.....	350	312	377
41	Dayton International, OH.....	301	321	376
42	Raleigh-Durham Int'l, NC.....	304	314	375
43	Honolulu International, HI.....	290	304	363
44	Austin, TX.....	277	292	344
45	Anchorage TRACON, AK.....	279	297	342
46	Milwaukee/Gen Mitchell Intl, WI....	284	290	336
47	Indianapolis Int'l, IN'.....	262	305	333
48	Kansas City International, MO.....	255	266	330
49	Nashville International, TN.....	251	272	314
50	Providence, RI.....	257	261	312

Automated Flight Service Stations Activity

CY 2000 Rank	AFSS/State	Flight Services (000's)	
		Jan-Dec 2001*	Jan-Dec 2000
1	Miami AIFSS, FL.....	1,266	1,196
2	St. Petersburg, FL.....	1,203	1,169
3	Lansing, MI.....	818	858
4	Fort Worth, TX.....	839	813
5	Bridgeport, CT.....	738	756
6	Seattle, WA.....	741	741
7	Prescott, AZ.....	739	727
8	Denver, CO.....	697	690
9	Princeton, MN.....	659	679
10	Kankakee, IL.....	673	669
11	Raleigh, NC.....	682	669
12	Green Bay, WI.....	582	657
13	Macon, GA.....	762	655
14	Columbia, MO.....	516	651
15	Leesburg, VA.....	648	640
16	San Angelo, TX.....	624	613
17	Williamsport, PA.....	562	587
18	Millville, NJ.....	562	570
19	Anderson, SC.....	474	560
20	Terre Haute, IN.....	526	559
21	Kenai AIFSS, AK.....	465	541
22	Oakland AIFSS, CA.....	484	536
23	Anniston, AL.....	526	526
24	Conroe, TX.....	528	516
25	Altoona, PA.....	432	498
26	Mc Alester, OK.....	493	472
27	Albuquerque, NM.....	441	468
28	Cleveland, OH.....	433	457
29	Hawthorne, CA.....	417	440
30	Reno, NV.....	415	432

* Preliminary CY2000 Ranks revised

Source: ATX-400
(202) 385-4734

Automated International Flight Service Station--AIFSS

As of: 12/31/01

Automated Flight Service Stations Activity

CY 2000 Rank	AFSS/State	Flight Services (000's)	
		Jan-Dec 2001*	Jan-Dec 2000
31	Riverside, CA.....	405	429
32	Wichita, KS.....	387	416
33	Jonesboro, AR.....	405	416
34	Rancho Murieta, CA.....	411	410
35	Gainesville, FL.....	491	399
36	Nashville, TN.....	386	394
37	Burlington, VT.....	333	393
38	Dayton, OH.....	383	393
39	St. Louis, MO.....	435	392
40	Mc Minnville, OR.....	380	374
41	Cedar City, UT.....	342	361
42	Bangor, ME.....	347	350
43	De Ridder, LA.....	338	350
44	Fort Dodge, IA.....	309	346
45	Columbus, NE.....	244	329
46	San Diego, CA.....	381	326
47	Islip AIFSS, NY.....	327	321
48	Grand Forks, ND.....	355	317
49	Buffalo, NY.....	285	309
50	Louisville, KY.....	297	303
51	San Juan AIFSS, PR.....	574	302
52	Elkins, WV.....	277	267
53	Great Falls, MT.....	252	262
54	Huron, SD.....	241	252
55	Greenwood, MS.....	251	244
56	Jackson, TN.....	227	242
57	Fairbanks, AK.....	213	223
58	Honolulu, HI.....	263	223
59	Boise, ID.....	204	194
60	Casper, WY.....	200	188
61	Juneau, AK.....	138	154

Airports

Number of U.S. Airports ¹ (As of December 31)

	2000	1999	1998
Total Airports	19,281	19,098	18,770
Public Use Airports.....	5,317	5,324	5,352
# with Paved Runways.....	3,953	3,949	3,970
# with Unpaved Runways.....	1,364	1,375	1,382
# with Lighted Runways.....	4,035	4,051	4,005
# with Unlighted Runways.....	1,282	1,273	1,347
Private Use Airports.....	13,964	13,774	13,418
# with Paved Runways.....	4,463	4,384	4,451
# with Unpaved Runways.....	9,501	9,390	8,967
# with Lighted Runways.....	1,010	918	840
# with Unlighted Runways.....	12,954	12,856	12,578
Public use airports abandoned	13	17	24
Private use airports abandoned	156	109	92
Certificated Airports*	651	655	660
Civil	563	565	566
Military	88	90	94

¹ Includes civil and joint-use civil-military airports, heliports, STOLports, and seaplane bases in the U.S. and its territories.

² Preliminary

* Certificated airports serve Air Carrier Operations with aircraft seating more than 30 passengers. (FAR Part 139).

Source: AAS-330

(202) 267-8752

As of: 12/31/00

National Airspace Total System Delays

Year	Jan	Feb	Mar	Apr	May	Jun	Jul	Aug	Sep	Oct	Nov	Dec	YTD Total
2001	27,894	31,599	30,040	30,260	36,460	41,607	40,037	49,423	18,628	13,365	13,249	15,550	348,112
2000	26,015	27,208	32,205	35,332	36,570	50,114	44,430	47,893	43,357	43,794	34,365	29,006	450,289
1999	24,345	19,851	23,180	34,046	39,533	41,602	45,162	37,189	32,833	28,223	23,330	24,822	374,116 r/
1998	27,623	24,855	24,159	22,563	29,187	37,093	25,672	30,549	20,194	23,988	20,439	19,912	306,234 r/
1997	21,588	15,856	15,055	17,453	19,177	25,068	26,193	24,816	19,388	17,812	22,337	20,516	245,259 r/

Delays of 15 minutes or longer

r/ Revised

As of: 12/31/01

Source: ATT-220
(703) 904-4470

Aircraft

U.S. Air Carrier Activity

	CY 1999	CY 1998	CY 1997
Total Number of Aircraft¹.....	19,145	18,754	17,990
Type of Carrier			
Domestic, flag, supplemental, scheduled, cargo air carriers, and commercial operators.....	7,094	6,959	6,681
Commuter Air Carriers and Air Taxis.....	12,051	11,795	11,309
Total Number of Aircraft¹.....	19,145	18,754	17,990
Type of Aircraft			
Jet.....	7,270	6,865	6,464
Turboprop.....	3,740	3,535	3,207
Piston.....	5,757	6,065	6,167
Rotary Wing.....	2,378	2,289	2,152
Air Carrier Traffic Statistics² (Millions)*			
Passenger miles flown.....	668,169	635,517	605,434
Passenger enplanements.....	635	613	599
Ton miles.....	86,800	82,304	81,057
Aircraft miles flown.....	6,161	5,838	5,679
Passenger load factor ³			
Domestic.....	68.9%	70.0%	69.1%
International.....	74.4%	72.8%	74.1%

¹ Source: Vital Information System

² Includes domestic and international scheduled service, of Certificated Route Air Carriers only.

³ Proportion of aircraft seating capacity that is sold.

As of: 12/31/99

Source: AFS-40
(202) 267-3433
*BTS (K-25)
(202) 366-8513

U.S. General Aviation and Air Taxi Activity

(Calendar Years)

	Estimated Active Aircraft (thousands)		Estimated Hours Flown (Millions)	
	2000	1999	2000	1999
Total	217.5	219.4	31.0	31.8
By Type Aircraft				
Piston.....	170.5	171.9	22.2	22.9
Turboprop.....	5.8	5.7	2.0	1.8
Jet.....	7.0	7.1	2.8	2.7
Rotary Wing.....	7.2	7.4	2.3	2.7
Other.....	6.7	6.8	0.4	0.3
Experimental.....	20.4	20.5	1.3	1.2
By Type Flying				
Public Use.....	N/A	4.1	N/A	1.1
Corporate.....	11.0	10.8	3.8	3.6
Business.....	25.2	24.5	3.6	3.6
Personal.....	148.2	147.1	11.7	11.3
Instructional.....	14.9	16.1	5.4	5.9
Aerial Application.....	4.3	4.6	1.4	1.5
Aerial Observation.....	5.1	3.2	1.6	1.2
External Load.....	0.2	0.2	0.2	0.1
Other Work.....	1.8	2.4	0.5	0.8
Sight Seeing.....	0.9	0.8	0.2	0.2
Air Tours.....	0.3	0.3	0.2	0.1
Air Taxi.....	3.7	4.3	1.7	1.9
Other.....	1.0	N/A	0.2	N/A
<u>Air Medical Services...</u>	0.9	0.8	0.4	0.5

N/A = Not Applicable

Aircraft Certification Service

Aircraft Certification Mission and Program Profiles

	FY 2001	FY 2000r
Type Certificates/Supplemental Type Certificates Issued.....	917	845
Other Design Approvals Issued.....	5,900	5,294
Production Approvals (Including Amendments) Issued.....	2,729	2,639
Airworthiness Certificates Issued.....	619	1,072
New Airworthiness Directives (AD) Issued.....	529	509
New Designees (Representative of the Administrator) Appointed.....	870	975
Total Active Designees.....	4,750	4,847

r revised

As of: 9/30/01

Source: AIR-503
(202) 267-7260

Active Pilots and Nonpilots (As of 31 December)

	2000		1999	
	Total	Women	Total	Women
Pilot-Total	625,581	36,757	635,472	35,762
Student.....	93,064	10,809	97,359	11,191
Private.....	251,561	14,554	258,749	15,171
Commercial.....	121,858	5,807	124,261	5,720
Airline Transport.....	141,596	4,411	137,642	4,126
Other ¹	17,502	1,176	17,461	1,165
Nonpilot-Total²	547,453	16,552	549,588	15,380
Mechanic.....	344,434	5,047	340,402	4,722
Repairmen.....	38,208	1,704	35,989	1,582
Ground Instructor.....	72,326	5,154	10,447	5,016
Flight Engineer.....	65,098	2,076	63,591	1,841
Other ³	27,387	2,571	25,975	2,389
Flight Instructor	80,931	5,193	79,171	5,028

¹ Includes helicopter (only) & glider (only), and recreational pilot certificates.

² Excludes non-pilots 70 years old or over in all certificate types except flight engineers and flight navigators.

³ Includes flight navigators, parachute riggers, and dispatchers.

As of 12/31/00

Source: APO-110
(202) 267-3352

Industry Trends

Scheduled U.S. Air Carrier Traffic and Financial Trends

	FY 2001	FY 2000	Numerical Change	Percent Change
TRAFFIC				
ASM'S (in millions)				
Majors.....	893,977	888,387	5,589	0.6
Nationals.....	66,534	57,639	8,895	15.4
Regionals.....	928	1,081	(153)	(14.2)
Totals.....	961,439	947,107	14,331	1.5
RPM's (in millions)				
Majors.....	635,959	644,813	(\$8,854)	(1.4)
Nationals.....	44,884	38,293	6,591	17.2
Regionals.....	521	546	(25)	(4.6)
Totals.....	681,364	683,652	(\$2,288)	(0.3)
Load Factor (in percent)				
Majors.....	71.1	72.6	(1.4)	
Nationals.....	67.5	66.4	1.0	
Regionals.....	56.1	50.5	5.6	
Totals.....	70.9	72.2	(1.3)	
FINANCIAL				
Revenues (in millions)				
Majors.....	\$111,690	\$115,338	(\$3,648)	(3.2)
Nationals.....	10,740	11,686	(946)	(8.1)
Regionals.....	898	800	98	12.3
Totals.....	\$123,328	\$127,824	(4,496)	(3.5)
Expenses (in millions)				
Majors.....	\$115,895	\$108,016	\$7,879	7.3
Nationals.....	10,792	11,149	(357)	(3.2)
Regionals.....	890	815	75	9.2
Totals.....	\$127,577	\$119,980	7,597	6.3
Operating Profit/Loss (in millions)				
Majors.....	(\$4,205)	\$7,322	(\$11,527)	
Nationals.....	(51)	537	(589)	
Regionals.....	8	(15)	23	
Totals.....	(\$4,249)	\$7,845	(\$12,093)	

As of: 1/28/02

Source: APO-110
(202) 493-4236

U.S. Commercial Space Transportation Financial Trends

	CY 99	CY 00	CY 01 (Projected)
Commercial Launch Revenues (in Millions)	\$851	\$625	\$600

As of: 1/19/01

Source: AST-200
(202) 267-8308

Aviation Forecasts

	Actual FY 2000	Forecast FY 2004
<hr/>		
FAA FACILITY WORKLOAD	46.0	50.4
Aircraft Handled by FAA ARTCC's (Millions)		
Air Carrier.....	25.0	28.0
Air Taxi/Commuter.....	8.1	8.7
General Aviation.....	8.7	9.5
Military.....	4.2	4.2
Operations Logged by FAA Towers (Millions)		
Airport.....	68.7	77.5
Instrument.....	53.0	57.7
Flight Services Logged by Flight Services Stations (Millions)	30.5	30.1
<hr/>		
CIVIL AVIATION ACTIVITY		
Certificated Route Air Carrier		
Revenue Passenger Enplanements (Millions)*.....	658.7	754.9
Revenue Passenger Miles (Billions)*.....	684.0	817.9
Air Carrier Aircraft.....	6,037	7,131
General Aviation Estimated		
Hours Flown (Millions)**.....	32.1	35.4
Active Aircraft (Thousands)**.....	221.2	230.2
<hr/>		
ESTIMATED FUEL CONSUMED BY U.S. DOMESTIC CIVIL AVIATION (Millions of Gallons)		
Jet Fuel		
Air Carrier.....	20,175	24,092
General Aviation.....	1,035	1,383
Aviation Gas		
Air Carrier.....	2.0	2.0
General Aviation.....	347.1	367.0
<hr/>		
Active Pilots (Thousands)**	648.5	714.6
<hr/>		

* Reflects update to forecasts published in FAA Aerospace Forecasts Fiscal Years 2001-2012.

** Calendar Year

As of: 3/7/2001

Source: APO-110
(202) 493-4236

Aviation Forecasts

Actual Forecast
FY 1999 FY 2003

FAA FACILITY WORKLOAD

Aircraft Handled by FAA ARTCC's (Millions)	44.7	49.0
Air Carrier.....	24.0	26.9
Air Taxi/Commuter.....	7.7	8.5
General Aviation.....	8.8	9.6
Military.....	4.1	4.1
Operations Logged by FAA Towers (Millions)		
Airport.....	68.2	73.9
Instrument.....	51.8	56.5
Flight Services Logged by Flight Services Stations (Millions)	32.4	32.2

CIVIL AVIATION ACTIVITY

Certificated Route Air Carrier

Revenue Passenger Enplanements (Millions)....	629.4	713.3
Revenue Passenger Miles (Billions).....	642.8	756.8

Air Carrier Aircraft..... 5,668 6,856

General Aviation Estimated

Hours Flown (Millions)*.....	29.8	32.7
Active Aircraft (Thousands)*.....	206.5	215.1

ESTIMATED FUEL CONSUMED BY U.S. DOMESTIC

CIVIL AVIATION (Millions of Gallons)

Jet Fuel

Air Carrier.....	19,429	22,287
General Aviation.....	888	1,191

Aviation Gas

Air Carrier.....	2	2
General Aviation.....	313	331

Active Pilots (Thousands)*..... 640.1 702.8

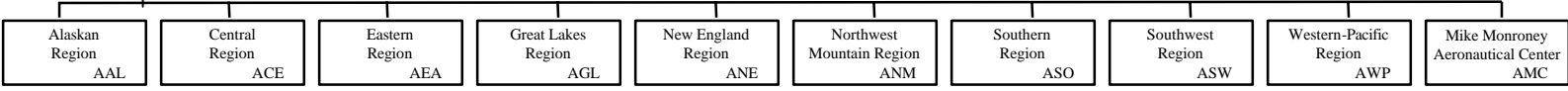
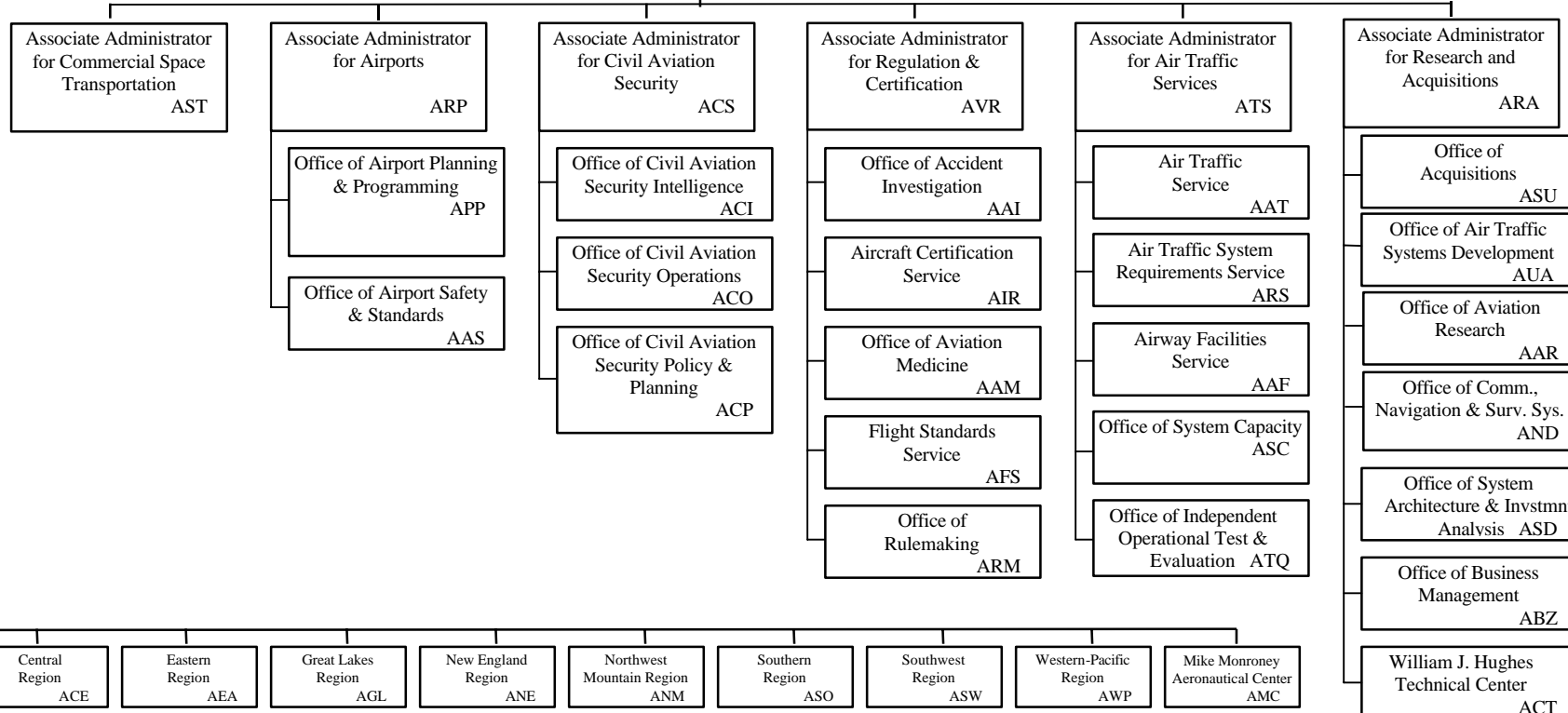
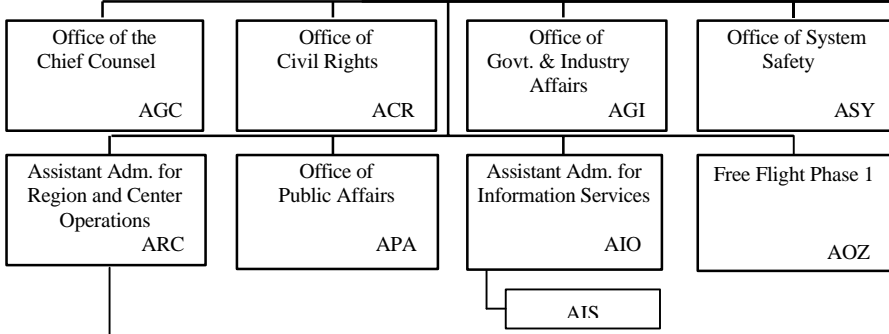
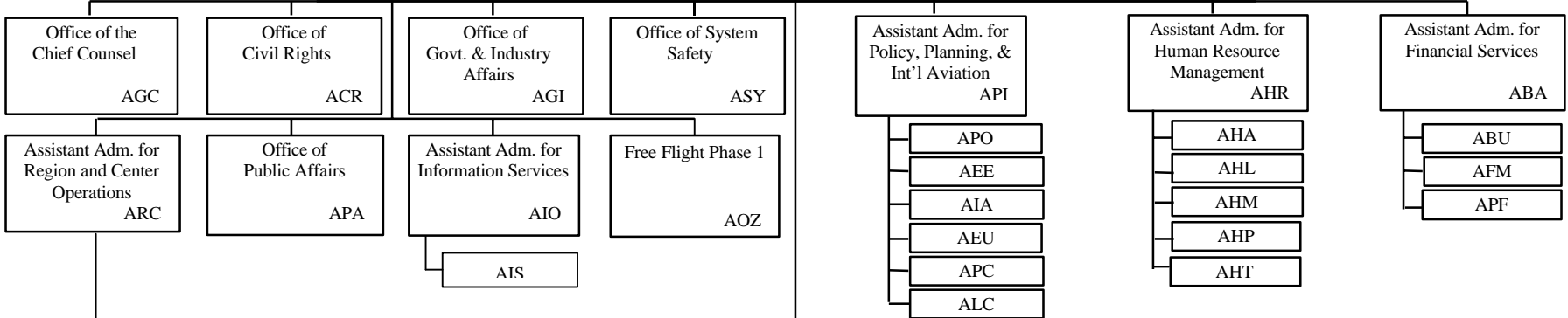
*Calendar Year
As of: 3/2000

Source: APO-110
(202) 493-4236

FEDERAL AVIATION ADMINISTRATION

Administrator
AOA

Deputy
Administrator
ADA



The Associate Administrator for Commercial Space Transportation

Since its establishment in 1984, the primary responsibilities of the Associate Administrator for Commercial Space Transportation (AST) have been to regulate the U.S. commercial space transportation industry and license commercial launches to protect public health and safety, safety of property, national security, and foreign policy interests of the U.S.. The Office is also responsible for encouraging, facilitating and promoting commercial launches by the private sector and for regulating non-federal or commercial space launch sites.

Licenses to conduct commercial launches are granted to commercial launch providers who demonstrate evidence of compliance with all safety regulations and other requirements for conducting commercial space launch activities. Licensees must also have sufficient insurance or financial resources to cover any probable losses from a launch mishap.

Licensed commercial launches are currently conducted at federal launch sites including Cape Canaveral Air Station, Florida; Vandenberg Air Force Base, California; Wallops Flight Facility, Wallops Island, Virginia; and White Sands Missile Range, New Mexico. Four non-federal or commercial sites are now licensed and operational to allow licensed commercial launches and other launch operations. They are the California Spaceport, located at Vandenberg Air Force Base; Florida Space Authority, located at Cape Canaveral; the Virginia Space Flight Center, located on Wallops Island, Virginia; and the Kodiak Launch Complex, located on Kodiak Island, Alaska. Several other states are developing spaceports including New Mexico, Texas, and Oklahoma.

AST Programs and Initiatives

Regulatory and Safety Program

- Licensing, Rulemaking, Insurance Determinations/Risk Assessment, Environmental Compliance, Standards, Compliance Monitoring, Enforcement, Safety Research, Reentry Spacecraft and Operations.

Other Programs and Initiatives

- Launch Technology Development, Customer Service, Industry and Market Analysis, Federal Space Policy Development, International Launch Trade Policy, Community and Educational Outreach

Research Areas

- Flight Safety, Launch Sites, Payload Safety, Standards, GPS, Environmental Issues, Space Safety including Orbital Debris.

World Wide Web Address:

<http://AST.faa.gov/>

U.S. Commercial Space Transportation Activity and AST Licensing

	FY 1999	FY 2000	FY 2001 (Proj.)
Licensed Commercial Launches			
TOTAL	18	12	16
Number of Orbital Launches	18	12	15
Number of Sub-Orbital Launches	0	0	1
By Launch Vehicle Type			
Delta Family (Boeing Company)	7	2	3
Atlas Family (Lockheed Martin)	5	4	3
Pegasus (Orbital Sciences Corp.)	2	2	2
Athena 1&2 (Lockheed Martin)	3	0	1
Taurus (Orbital Sciences Corp.)	0	1	1
Zenit (KB Yuzhnoye, Ukraine)	1	3	3
Other	1	0	3
By Payload Type			
GEO ¹ Communications Satellites	8	8	9
LEO ² Communications Satellites	5	2	0
Scientific Satellites	3	1	1
Remote Sensing Satellites	3	0	3
Microgravity or Sub-orbital Payloads	0	0	1
Mass Simulator / Testing	1	1	2
By Launch Site (Federal)			
Cape Canaveral Air Station, FL	13	6	6
Vandenberg AFB, CA	4	1	3
Wallops Flight Facility, VA	0	1	0
White Sands Missile Range, NM	0	0	0
Kwajalein Missile Range	1	0	1
By Launch Site (Non-Federal)			
California Spaceport	0	0	0
Spaceport Florida Authority	0	0	0
Virginia Space Flight Center	0	0	0
Pacific Ocean Platform	1	3	3
Kodiak Launch Complex, AK	0	0	1
International Site	0	0	2
Number of Licenses			
New	3	6	8
Renewal	4	1	4
Amendments	18	5	3

¹ GEO: Geosynchronous Earth orbit-approx. 22,300 miles above the equator.

² LEO: Low Earth Orbit- from 100-1000 nautical miles.

United States Commercial Space Launch Schedule, CY 2002

(launch dates are subject to change)

Payload (Operator)/ Description	Launch Company/ Vehicle	Launch Date/ Launch Site
<i>Iridium IS-1 (U.S.)</i> Comm. Satellite	The Boeing Company Delta II	February 2002 Vandenberg AFB, CA
<i>Echostar VII (U.S.)</i> Comm. Satellite	Lockheed Martin (International Launch Services, ILS) Atlas IIIB	February 2002 Cape Canaveral Air Force Station, FL
<i>HyShot 2 (Australia)</i> Hypersonic test [suborbital]	Astrotech Space Terrier-Orion	April 2002 Woomera, Australia
<i>Galaxy III C (U.S.)</i> Comm. Satellite	Sea Launch Zenit 3SL	May 2002 Pacific Ocean Platform
<i>Hotbird 6 (Europe)</i> Comm. Satellite	Lockheed Martin (ILS) Atlas V [first launch]	May 2002 Cape Canaveral Air Force Station, FL
<i>Asiasat 4 (U.S.)</i> Comm. Satellite	Lockheed Martin (ILS) Atlas IIIB	May 2002 Cape Canaveral Air Force Station, FL
<i>Unannounced (Europe)</i> Comm. Satellite	The Boeing Company Delta IV [first launch]	July 2002 Cape Canaveral Air Force Station, FL
<i>Unannounced</i>	Sea Launch Zenit 3SL	2002 Pacific Ocean Platform
<i>Hispasat 1-D (Spain)</i> Comm. Satellite	Lockheed Martin (ILS) Atlas IIAS	August 2002 Cape Canaveral Air Force Station, FL
<i>Orbview 3 (U.S.)</i> Remote Sensing	Orbital Sciences Corp. Pegasus XL	September 2002 Vandenberg AFB, CA
<i>Unannounced [suborbital]</i>	Interorbital Systems Taccyon	Fall 2002 Pacific Ocean Platform
<i>Galaxy XIII (U.S.)</i> Comm. Satellite	Sea Launch Zenit 3SL	2002 Pacific Ocean Platform
<i>NIMIQ 2 (Canada)</i> Comm. Satellite	Lockheed Martin (ILS) Atlas V	Fall 2002 Cape Canaveral Air Force Station, FL
<i>Estrela do Sol (Brazil)</i> Comm. Satellite	The Boeing Company Delta IV	Fall 2002 Cape Canaveral Air Force Station, FL

As of 1/29/02

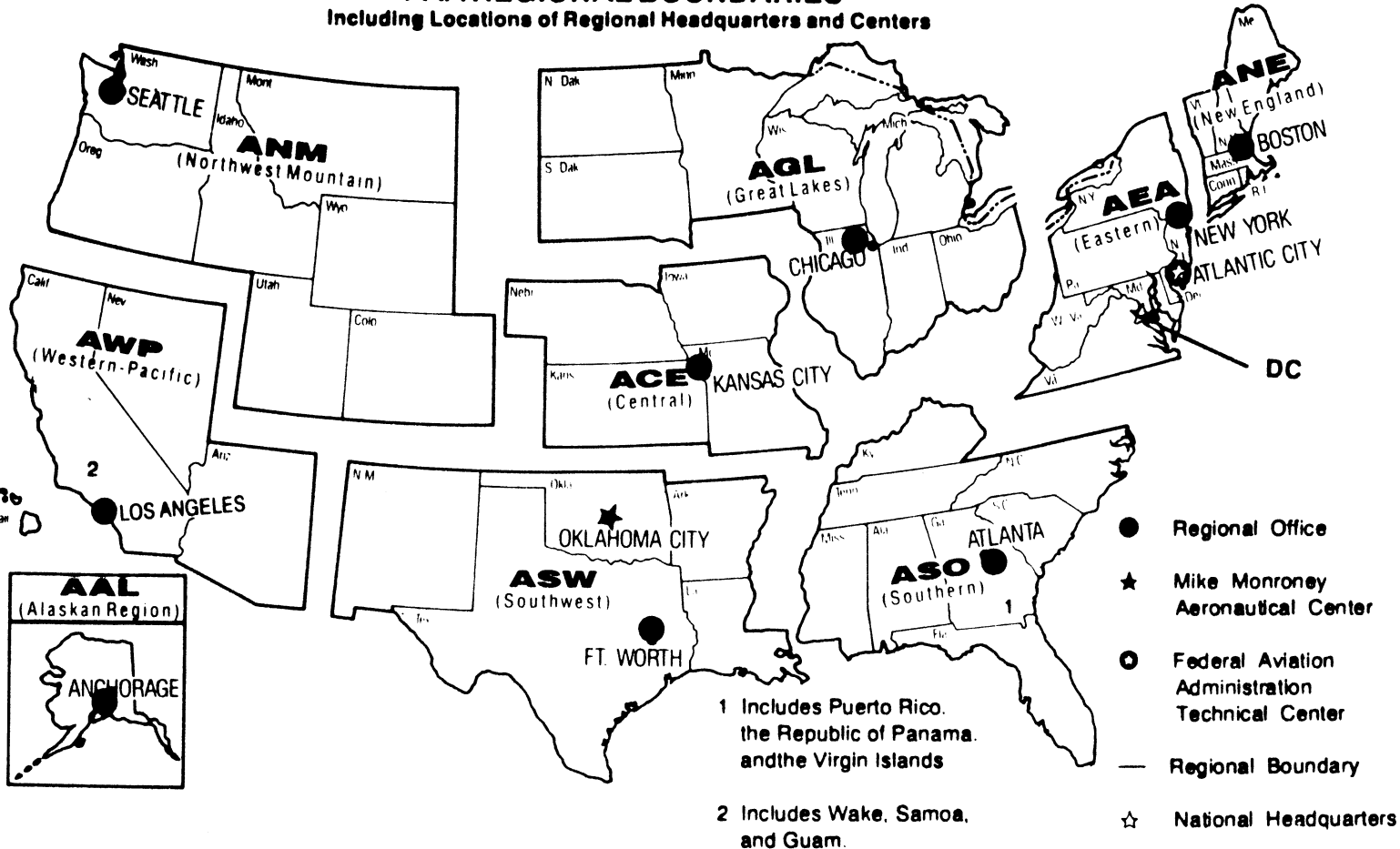
Source: AST
(202) 267-7989

United States Commercial Space Launch Schedule, CY 2002

(launch dates are subject to change)

Payload (Operator)/ Description	Launch Company/ Vehicle	Launch Date/ Launch Site
<i>Unannounced</i>	Sea Launch Zenit 3SL	2002 Pacific Ocean Platform

**U.S. DEPARTMENT OF TRANSPORTATION
Federal Aviation Administration
FAA REGIONAL BOUNDARIES**
Including Locations of Regional Headquarters and Centers



FAA Resources

FAA Employment (Permanent Employees)¹

	FY 01 Revised	FY 02 Dec 01
<hr/>		
Line of Business		
Air Traffic Services (ATS).....	36,349	36,460
Regulation and Certification (AVR).....	6,195	6,164
Civil Aviation Security (ACS).....	1,221	1,560
Airports (ARP).....	472	471
Research and Acquisitions (ARA).....	1,858	1,855
Comm. Space Transportation (AST)....	44	60
Staff Offices.....	3,762	3,789
Total.....	49,901	50,359
<hr/>		
Region/Center/Headquarters (included in above total)		
Aeronautical Center.....	1,582	1,588
Alaskan.....	1,406	1,401
Central.....	2,587	2,577
Eastern.....	5,411	5,484
Great Lakes.....	6,588	6,594
New England.....	1,996	1,987
Northwest Mountain.....	4,224	4,187
Southern.....	7,883	7,888
Southwest.....	5,430	5,425
Western-Pacific.....	5,661	5,672
Washington Headquarters (only) ²	4,109	4,189
Washington Headquarters Field ³	2,055	2,397
Technical Center.....	969	970

¹ Full time permanent and part time permanent employees only.

² Washington Headquarters employees physically located in FOB-10A and surrounding areas (i.e. Portals, Market Square, etc.).

³ Washington Headquarters employees physically located in the Field (i.e. Technical Center, Aeronautical Center, etc.)

Source: APF-100
(202) 267-9946

As of: 12/31/01

FAA Percent Minority & Female Employment¹

Lines of Business/Region/Center/Headquarters	% Minority		%Female	
	FY 01 r	Dec 01	FY 01r	Dec 01
AirTraffic Services (ATS).....	16.8	17.0	19.1	19.1
Regulation and Certification (AVR).....	17.9	18.2	28.3	28.2
Civil Aviation Security (ACS).....	27.7	25.3	42.3	34.9
Airports (ARP).....	23.3	23.5	39.6	40.3
Research and Acquisitions (ARA).....	27.5	27.7	38.2	37.6
Commercial Space Transportation (AST).....	45.4	48.3	31.8	28.3
Staff Offices.....	32.0	31.9	54.0	54.0
Total.....	18.9	19.0	24.3	24.2
Aeronautical Center.....	23.7	23.6	43.4	43.4
Alaskan.....	13.8	13.4	25.3	25.1
Central.....	14.2	14.3	24.7	24.8
Eastern.....	15.4	15.3	19.4	19.5
Great Lakes.....	10.7	10.9	20.6	20.6
New England.....	7.7	7.7	21.0	21.2
Northwest Mountain.....	12.0	12.2	22.7	22.6
Southern.....	20.3	20.6	19.9	20.0
Southwest.....	21.2	21.8	20.6	20.5
Western-Pacific.....	28.6	28.9	20.8	20.9
Washington Headquarters (only) ²	32.5	32.5	45.0	44.8
Washington Headquarters Field ³	18.1	17.8	31.0	27.8
Technical Center.....	20.1	20.1	32.4	31.9

¹ Full-time permanent, and part-time permanent employees only (FTE 1111 & 1132).

² Washington Headquarters employees physically located in FOB-10A and surrounding areas (i.e. Portals, Market Square, etc.).

³ Washington Headquarters employees physically located in the Field (i.e. Technical Center, Aeronautical Center, etc.).

r Revised

Major Work Force Employment

	Employment ¹				
	FY 00	FY01	Dec 01	% Change	Actual Change
Air Traffic Controller Work Force ATCS ² (bargaining unit employees)	17,423	17,510	17,531	0.1%	21
Traffic Management Coordinators ² Operations Supervisors ²	14,904	14,997	15,047	0.3%	50
Flight Service Stations	622	787	784	-0.4%	-3
	1,897	1,726	1,700	-1.5%	-26
Field Maintenance (210-211 only)	2,976	2,934	2,898	-1.2%	-36
Security Work Force	7,830	8,188	8,078	4.6%	-110
Airports Work Force	1,136	1,172	1,187	3.2%	15
Research & Acquisition Work Force ³	440	461	480	4.8%	19
Aircraft Certification	1,945	1,910	1,907	-1.8%	-3
Flight Standards Work Force	992	1,025	1,021	3.3%	-4
	4,206	4,476	4,477	6.4%	1

¹ Full time permanent appointments (operations direct).

² Included in Air Traffic Controller Work Force Total.

³ Includes direct operations, F&E, and R,E&D.

Note: Traffic Management Supervisors (TMS) are no longer included in Controller Work Force.

Source: APF-100
(202) 267-9946

As of: 12/31/01

Labor Relations

	BARGAINING UNITS	LABOR AGREEMENTS	EMPLOYEES REPRESENTED
Unions.....	47	17	38,886
AFGE.....	11	5	1,400
AFSCME (HQ).....	5	0	1,900
LIUNA.....	1	1	150
NAATS.....	1	1	2,400
NAGE.....	3	1	400
NATCA (AT).....	3	1	16,300
NATCA (AF).....	5	1	1,400
NATCA (HQ).....	7	0	1,511
NFFE.....	2	2	1,600
NUDAI.....	1	0	25
PAACE.....	3	2	400
PASS (AF/AEA).....	1	1	7,500
PASS (AVN).....	1	1	250
PASS (AFS).....	2	1	3,500
PASS (AIR).....	1	0	150

AFGE	--American Federation of Government Employees
AFSCME	--American Federation of State, County, and Municipal Employees
LIUNA	--Laborer's International Union of North America
NAATS	--National Association of Air Traffic Specialists
NAGE	--National Association of Government Employees
NACTA	--National Air Traffic Controllers Association
NFFE	--National Federation of Federal Employees
NUDAI	--National Union of Drug Abatement Inspectors
PAACE	--Professional Association of Aeronautical Center Employees
PASS	--Professional Airway System Specialists

As of: 4/23/01

Source: AHL-200
(202) 267-3375

FAA Finances

(In Millions of Dollars)

	FY 2000	FY 2001	FY 2002
	Actual	Est.	Est.
Budget Authority			
Grants-In-Aid (Obligation Limitation).....	1,896	3,193	3,300
Research, Engineering, & Development.....	156	187	188
Facilities and Equipment.....	2,034 ^{1/}	2,651	2,914
Operations.....	5,958 ^{2/}	6,516	6,886
Total.....	10,044	12,547	13,288
Obligations Incurred--Operations			
Appropriation by Budget Activity			
Air Traffic Services.....	4,670	5,185	5,447
Regulation and Certification.....	645	706	745
Civil Aviation Security.....	136	139	150
Research and Acquisitions.....	174	190	197
Commercial Space Transportation.....	6	12	15
Regions/Center Operations.....	85	99	91
Human Resources.....	66	55	75
Financial Services.....	40	48	51
Staff Offices.....	76	105	116
Total.....	5,898	6,539	6,887
Airport Grant Obligations (NET)			
Primary Airports & Cargo.....	612	1,162	1,151
States/Territories/Insular/Alaska Supp.....	353	649	668
Carryover Entitlements.....	136	133	133
Discretionary Fund.....	750	1,196	1,274
Total.....	1,851	3,140	3,226
Total FAA Outlays.....	9,561	11,021	10,558
Trust Fund Receipts from Excise Taxes			
Passenger Ticket Tax.....	5,103	5,273	5,603
Passenger Flight Segment Tax.....	1,655	1,830	2,057
Waybill Tax.....	500	640	683
Fuel Tax.....	887	1,000	1,044
International Departure/Arrival Tax.....	1,349	1,412	1,528
Rural Airports Tax.....	86	91	97
Frequent Flyer Tax.....	159	168	172
Interest on Investment.....	805	871	996
Offsetting Collections.....	144	96	96
Total.....	10,688	11,381	12,276

Numbers may not add due to rounding.

1/ Reflects \$30 million rescission.

2/ Includes \$75 million supplemental and rescission of \$10.8 million in unobligated Y2K balance.

Source: ABU-100
(202) 267-9070

FAA NAS Operational Facilities and FAA Aircraft (As of December 31)

	2000	1999	1998
NAS Operational Facilities¹	40,921	40,360	38,209
Communications.....	14,103	13,901	13,437
Automation.....	3,889	3,802	3,157
Environment.....	6,620	6,391	5,872
Navigation.....	11,211	11,265	11,164
Surveillance.....	1,794	1,764	1,660
Weather.....	3,304	3,237	2,919
Air Traffic Control Facilities²			
Air Route Traffic Control Center.....	21	21	21
Airport Traffic Control Tower.....	496	492	467
Flight Service Stations.....	75	77	76
Automated Flight Service Stations	61	61	61
FAA Aircraft*	50	49	48

¹ Excludes non-federal facilities and foreign facilities.

² Included in NAS operational facilities.

Source: AOP-200
(202) 267-5928
ASW-280*
(405) 954-6231

As of: 12/31/00

FAA Officials

Washington Headquarters

Routing Symbol	Officials
AOA	Administrator Jane F. Garvey, 202-267-3111 Thomas Zoeller, Chief of Staff, 202-267-3111
ADA*	Deputy Administrator Vacant, 202-267-8111 Shirley S. Miller, Executive Assistant, 202-267-8111
AOZ	<i>Free Flight</i> <i>Director, John Thornton (Actg.), 202-220-3300</i>
AIO	Assistant Administrator for Information Services Daniel J. Mehan, CIO, 202-493-4570 Deputy, Arthur Pyster, 202-493-4570
AIS	<i>Office of Information Systems</i> <i>Director, Michael F. Brown, 202-267-7104</i>
ASY	Assistant Administrator for System Safety Christopher A. Hart, 202-267-3611 Deputy, Daniel C. Hedges, 202-267-3611
AGC	Chief Counsel David G. Leitch, 202-267-3222 Deputy, James Whitlow, 202-267-3773
ACR	Assistant Administrator for Civil Rights Fanny Rivera, 202-267-3254 Deputy, Barbara A. Edwards, 202-267-3264
AGI	Asst. Administrator for Government & Industry Affairs Quentin Burgess (Actg.), 202-267-3277 Deputy, Vacant, 202-267-8211
APA	Assistant Administrator for Public Affairs Scott M. Brenner, 202-267-3883 Deputy, Laura Brown, 202-267-3883
API*	Asst. Administrator for Policy, Planning, and Intl. Aviat. Louise E. Maillett (Actg.), 202-267-3033 Deputy, Carl McCullough (Actg.), 202-267-3927
AEE	<i>Office of Environment and Energy</i> <i>Director, Carl Burlison, 202-267-3576</i>
AIA*	<i>Office of International Aviation</i> <i>Director, Ava L. Mims, 202-267-8112</i>
APO	<i>Office of Aviation Policy and Plans</i> <i>Director, John M. Rodgers, 202-267-3274</i>
ARC	Assistant Administrator for Region/Center Operations Ruth Leverenz, 817-222-5001 / 202-267-7369

FAA Officials

Washington Headquarters--(Cont)

Routing Symbol	Officials
ABA	Assistant Administrator for Financial Services Christoph P. Bertram, CFO, 202-267-9105 Deputy, John F. Hennigan, 202-267-8928
ABU	<i>Office of Budget</i> Director, J. Brian Riley, 202-267-8010
AFM	<i>Office of Financial Management</i> Director, David M. Zavada, 202-267-3018
APF	<i>Office of Cost and Performance Management</i> Director, Tim Lawler, 202-267-7140
AHR	Assistant Administrator for Human Resource Management Glenda Tate, 202-267-3456 Deputy, Mary Ellen Dix, 202-267-3850
AHA*	<i>Office of the Accountability Board</i> Director, Barbara J. Smith (Actg.), 202-267-8015
AHD	<i>Office of Organization, Learning & Development</i> Director, Paul Longanbach, 202-267-9041
AHL	<i>Office of Labor & Employee Relations</i> Director, Melvin Harris, 202-267-3979
AHM*	<i>Center for Management Development</i> Director, Barbara J. Smith, 386-446-7136
AHP	<i>Office of Personnel</i> Director, Roger M. Edwards, 202-267-3850
AST	Assoc. Adm. for Commercial Space Transportation Patricia Grace Smith, 202-267-7793 Deputy, Joseph A. Hawkins, 202-267-7848
ARP*	Associate Administrator for Airports Woodie Woodward, 202-267-9471 Deputy, Paul L. Galis, 202-267-8738
AAS	<i>Office of Airport Safety and Standards</i> Director, David L. Bennett, 202-267-3053
APP	<i>Office of Airport Planning & Programming</i> Director, Catherine M. Lang, 202-267-8775
ACS*	Associate Administrator for Civil Aviation Security Paul Busick (Actg.), 202-267-9863 Deputy, Lynne A. Osmus, 202-267-3969
ACI	<i>Office of Civil Aviation Security Intelligence</i> Director, Claudio Manno, 202-267-9075
ACO	<i>Office of Civil Aviation Security Operations</i> Director, Eugene Ross Hamory, 202-267-8537
ACP	<i>Office of Civil Aviation Security Policy and Planning</i> Director, Lee Longmire, 202-267-8058

FAA Officials

Washington Headquarters--(Cont.)

Routing Symbol	Officials
AVR	Associate Administrator for Regulation & Certification Nicholas A. Sabatini, 202-267-3131 Deputy, Peggy Gilligan, 202-267-7804
AAI	<i>Office of Accident Investigation</i> Director, Steven B. Wallace, 202-267-9612
AAAM	<i>Office of Aviation Medicine</i> Director, Jon L. Jordon, MD, 202-267-3535
AFS*	<i>Flight Standards Service</i> Director, James Ballough, 202-267-8237
AIR	<i>Aircraft Certification Service</i> Director, John J. Hickey, 202-267-8235
ARM	<i>Office of Rulemaking</i> Director, Anthony F. Fazio, 202-267-9677
ATS	Associate Administrator for Air Traffic Services Monte Belger, 202-267-8111 Steven J. Brown (Actg.), 202-267-7111 Deputy, Peter H. Challan, 202-267-3133
AAF	<i>Airway Facilities Service</i> Director, Alan Moore, 202-267-8181
AAT	<i>Air Traffic Service</i> Director, Bill G. Peacock, 202-267-3666
ARI*	<i>Runway Safety</i> Director, William S. Davis, 202-385-4778
ARS	<i>Air Traffic System Requirements Service</i> Director, James H. Washington, 202-385-7500
ASC	<i>Office of System Capacity and Requirements</i> Director, Paula R. Lewis, 202-267-7370
AIB	<i>Terminal Business Service</i> Director, William Voss, 202-264-3500
ATQ	<i>Independent Operational Test and Evaluation</i> Director, A. Martin Phillips, 202-267-3341
ARA	Associate Administrator for Research and Acquisitions Steven Zaidman, 202-267-7222 Deputy, Dennis DeGaetano, 202-267-7222
AAR	<i>Office of Aviation Research</i> Director, Herman Rediess, Ph.D., 202-267-9251
ABZ	<i>Office of Business Management</i> Director, Lauraline Gregory, 202-267-3616
AND*	<i>Office of Communications, Navigation, & Surveillance Sys.</i> Director, Daniel P. Salvano (Actg.), 202-267-3200
ASD	<i>Office of System Architecture and Investment Analysis</i> Director, John A. Scardina, 202-358-5238
ASU	<i>Office of Acquisitions</i> Director, Gilbert B. Devey, 202-267-8513
AUA	<i>Office of Air Traffic Systems Development</i> Director, Gregory D. Burke (Actg.), 202-493-0313

Duty Officer (202) 267-3333

FAA Officials

Major Field Organizations

Routing Symbol	Officials
AAL	Alaskan Region, Regional Administrator Patrick N. Poe, 907-271-5645 222 West 7th Avenue, Box 14 Anchorage, Alaska 99513-7587 Duty Officer, 907-271-5936
ACE*	Central Region, Regional Administrator Christopher Blum, 816-329-3050 901 Locust Kansas City, Missouri 64106 Duty Officer, 816-329-3000
ACT	William J. Hughes Technical Center, Director Anne Harlan, Ph.D., 609-485-6641 Atlantic City International Airport New Jersey 08405 Duty Officer, 609-485-6482
AEA	Eastern Region, Regional Administrator Arlene B. Feldman, 718-553-3000 1 Aviation Plaza 159-30 Rockaway Blvd. Jamaica, New York 11434-4809 Duty Officer, 718-553-3100
AGL	Great Lakes Region, Regional Administrator Cecelia Hunziker, 847-294-7294 2300 East Devon Avenue Des Plaines, Illinois 60018 Duty Officer, 847-294-8400
AMC	Mike Monroney Aeronautical Center, Director Lindy Ritz, 405-954-4521 6500 South MacArthur Oklahoma City, Oklahoma 73125 Duty Officer, 405-954-3583

FAA Officials

Major Field Organizations--(Cont.)

Routing Symbol	Officials
ANE	New England Region, Regional Administrator Robert S. Bartanowicz, 781-238-7020 12 New England Executive Park Burlington, Massachusetts 01803 Duty Officer, 781-238-7001
ANM	Northwest Mountain Region, Regional Administrator Larry Andriesen, 425-227-2001 1601 Lind Avenue, S.W. Renton, Washington 98055-4056 Duty Officer, 425-227-2000
ASO	Southern Region, Regional Administrator Carolyn Blum, 404-305-5000 1701 Columbia Avenue College Park, Georgia 30337 Duty Officer, 404-305-5180
ASW	Southwest Region, Regional Administrator Ruth Leverenz, 817-222-5001 2601 Meacham Blvd. Ft. Worth, Texas 76137-4298 Duty Officer, 817-222-5006
AWP	Western-Pacific Region, Regional Administrator William C. Withycombe, 310-725-3550 15000 Aviation Boulevard Hawthorne, California 90261 Duty Officer, 310-725-3300

FAA Officials

International Area Offices

Routing Symbol	Officials
AEU	Europe, Africa, & Middle East Area Office, Director Paul Feldman, 011.32.2.508.2700 American Embassy, Brussels PSC 82 Box 002 APO AE 09724-1011
ALC	Latin America & Caribbean Area Office, Director Joaquin Archilla, 305-716-3300 8600 NW 36th Street Miami, FL 33166
APC*	Asia-Pacific Area Office, Director Elizabeth E. Erickson, 011.65.543.1466 American Embassy 27 Napier Road Singapore 258508

FAA STRATEGIC PLAN

SAFETY

GOAL: *By 2007, reduce U.S. aviation fatal accident rates by 80% from 1996 levels.*

Outcome Measures:

Fatal Aircraft Accident Rate: By 2007, reduce the U.S. aviation fatal accident rate per aircraft departure, as measured by a three-year moving average, by 80 percent from the three-year average of 1994-96.

Overall Aircraft Accident Rate: Reduce the rate per aircraft departure.

Fatalities and Losses by Type of Accident: Reduce the number and type of fatalities and losses from accidents that occur for each major type of accident.

Occupant Risk: Reduce the risk of mortality to a passenger or flight crew member on a typical flight.

Strategic Focus Areas:

Regulatory Reform: Implement a regulatory process that is timely, responsive, and consistently applied.

Safety information Sharing and Analysis: Develop partnerships with the aviation community to share data and information supporting safe, secure aviation.

Surveillance/Inspection: Develop new approaches to working with others on inspection and surveillance and targeting FAA resources where they will do the most good.

Accident Prevention: Based on detailed root cause analysis, prevent accidents before they happen through appropriate, targeted, systematic interventions in the aviation system.

As of 3/31/99

Source: APO-120
(202) 267-3220

Security

GOAL: Prevent security incidents in the aviation system.

Outcome Measures:

Explosive Device and Weapons Detection: Increase ability to detect improvised explosive devices (through use of simulants) and weapons with no significant increase in operational impact - in checked and carry-on baggage and on the person.

Compliance with Security Requirements: Increase as measured by compliance audits.

Risk and Vulnerability at Airports and Airway Facilities: Reduce as measured by risk assessments.

Strategic Focus Areas:

New Security Baseline: Continue to improve the baseline security system for civil aviation.

Performance and Procedures: Maximize the performance capability of people working in security for air carriers and airport operators and at FAA facilities.

Information Security Architecture: Develop a systematic information security architecture that describes the future NAS information security system FAA will build toward.

SYSTEM EFFICIENCY

GOAL: Provide an aerospace transportation system that meets the needs of users and is efficient in the application of FAA and aerospace resources.

Outcome Measures:

System Flexibility: Reduce total number of published ATC preferential routes by 7%.

User Access: Reduce the average call waiting times for Automated Flight Service Stations (AFSS) by 20%.

System Delays: Reduce the rates of volume and equipment related delays by 20%.

Strategic Focus Areas:

NAS Modernization: Using the NAS Architecture as the guideline, continually refine and update the NAS to achieve efficient aerospace systems and operations.

Free Flight: Within safety consideration, work toward giving aircraft the opportunity to fly in the way that gives them the most benefit as they define it.

Systems Integration: Integrate airport and commercial space requirements into NAS planning and architecture.

ENABLING GOALS:

People: The Foundation of Accomplishment

Provide a model work environment supporting the productive, diverse, and highly skilled workforce needed to carry out the FAA mission into the twenty-first century. To accomplish this, FAA will focus on:

Intellectual Capital

Managing the Diverse Work Force

Quality of Work Life

Reform: The Framework for Accomplishment

Fundamentally change the way the FAA operates by implementing personnel and acquisition reform and pursuing financial reform. FAA will focus on:

Acquisition Reform

Personnel Reform

Financial Reform

The Environment: Our Responsibility

Address what may represent the single greatest challenge to the continued growth and prosperity of civil aerospace as we enter the twenty first century, focusing on:

Understanding Aerospace Environmental Impacts

Reducing Aerospace Environmental Impacts of FAA Activities

Quantify and Mitigate Environmental Impacts of FAA Activities

Global Leadership: Commitment to Worldwide Improvements

Improve safety, security and system efficiency globally through:

International Safety Oversight

Global Safety Action Plan

Global CNS/ATM Development and Implementation

International Regulatory Harmonization