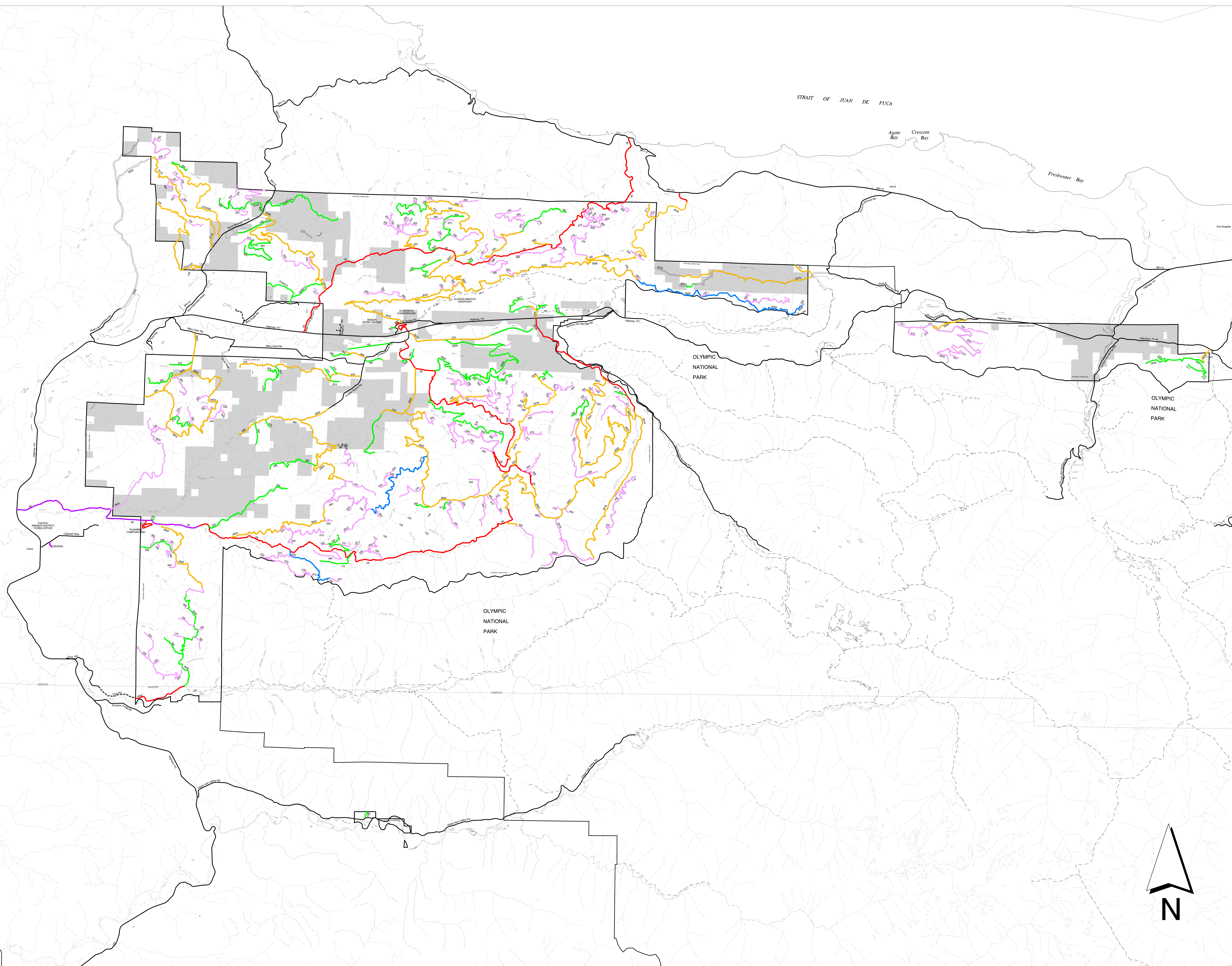
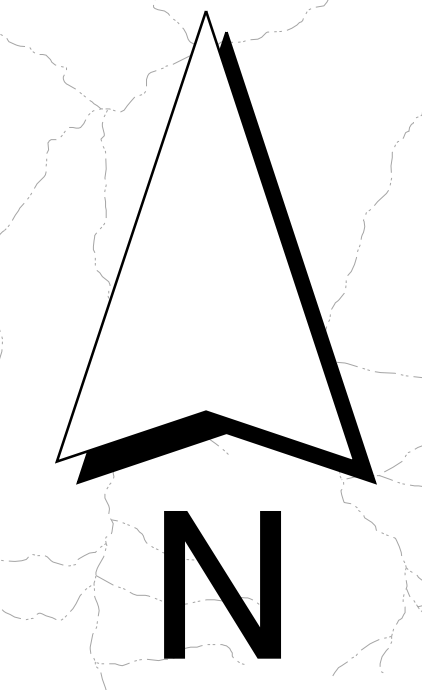
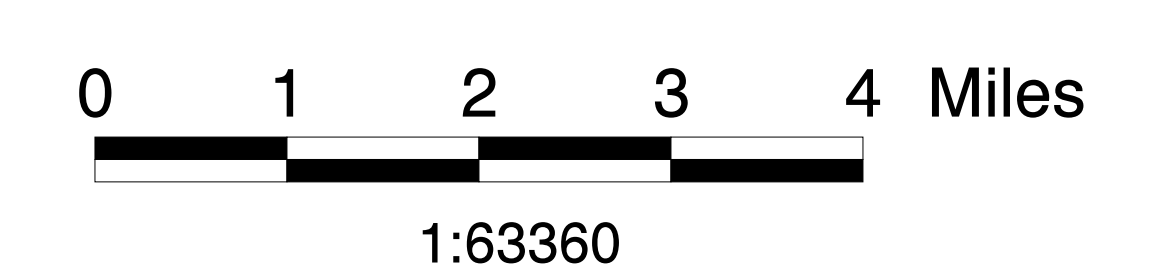


# Draft A&TM Objective Maint. Level

Pacific RD  
(North Area)



- Proposed Object. Maint. Level**
- 4 Passenger cars, high comfort
  - 3 Passenger cars
  - 2 High clearance vehicles
  - 1 Not maintained for travel
  - C Convert to trail
  - D Decommission
  - Trail
- Road**
- Double Lane Paved
  - Single Lane Paved
  - Gravel, Passenger Cars
  - Gravel, High Clearance Vehicles
  - Closed Roads
  - Forest Bdy.
  - Streams
  - Private



Original data was compiled from multiple source data and may not meet the U.S. National Mapping Accuracy Standard of the Office of Management and Budget. For specific source dates and/or additional digital information contact the Forest Supervisor, Olympic National Forest, 1835 Black Lake Blvd. SW Suite A, Olympia WA 98512-5623. This map has no warranties to its contents or accuracy.