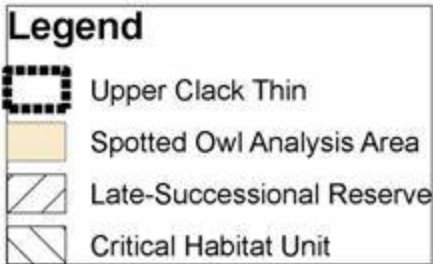
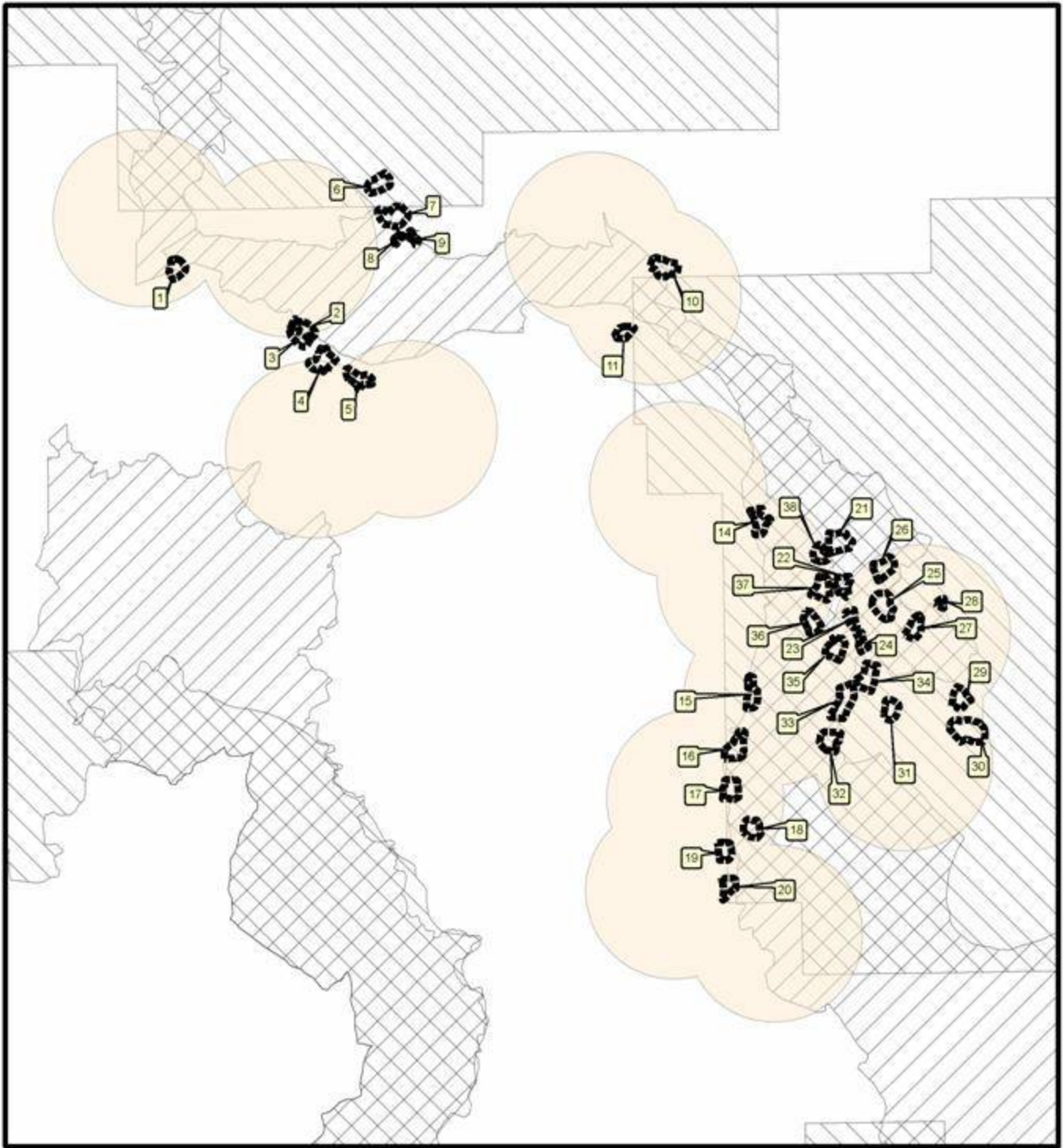
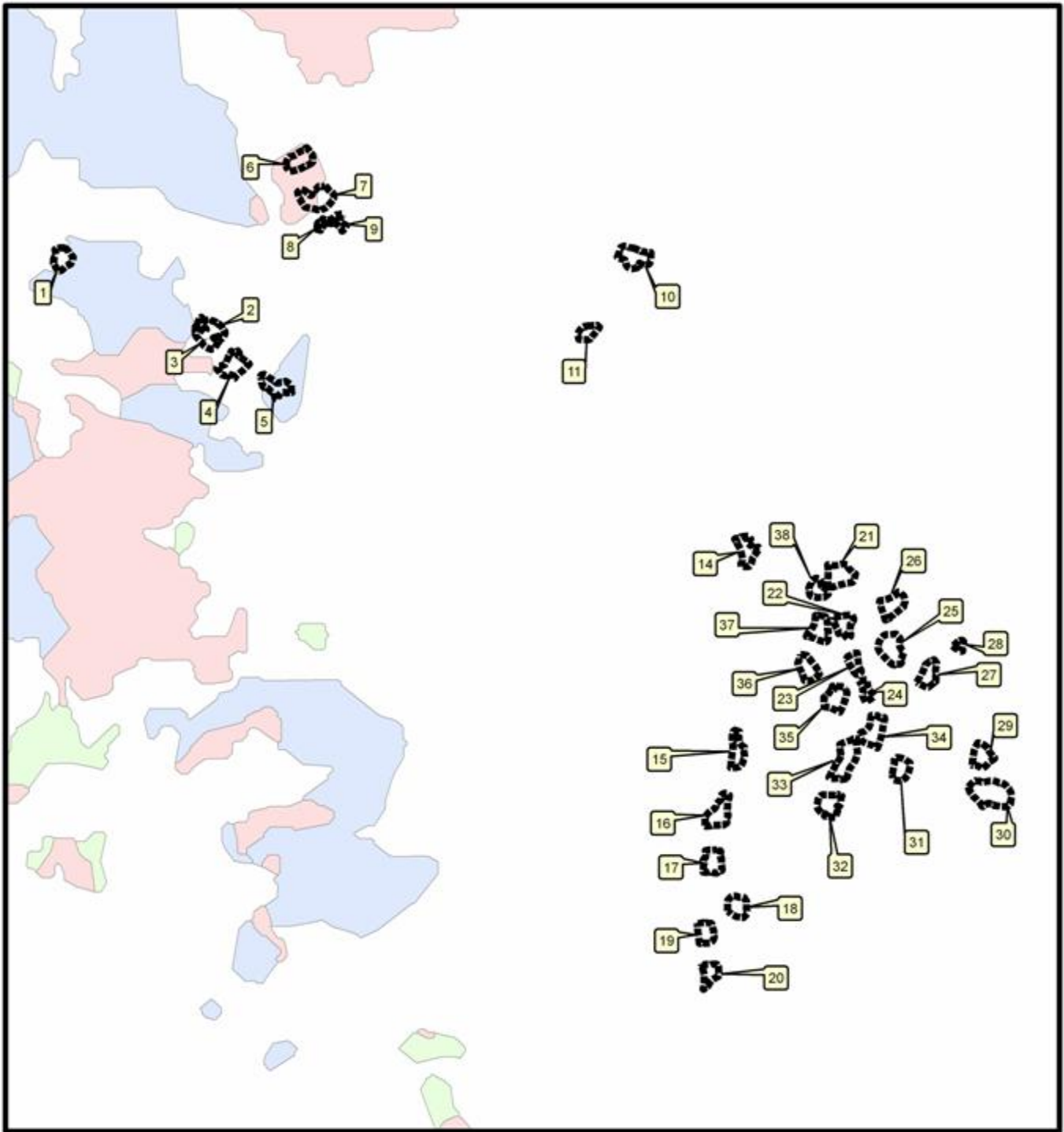


Table of Contents for Appendix E





Maps

- F2 Northern Spotted Owl Analysis Area - Late-Successional Reserves and Critical Habitat Units
- F3 Earthflows – High and Moderate Risk Earthflows
- F4 Watersheds – Key Watersheds, Wild and Scenic Rivers, Riparian Reserves, Drainages
- F5 Deer & Elk – Analysis Areas, Summer and Winter Range
- F6 Scenery – Modification, Partial Retention, and Retention Visual Quality Objectives
- F7 Snags – Snag Analysis Areas
- F8 Matrix – including Timber Emphasis
- F9 to end Unit Maps – Units, Unit Numbers, Roads, Road Numbers, Road Work, Logging Systems, Temporary Roads, Streams, Contour Lines



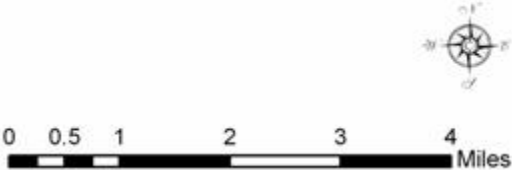


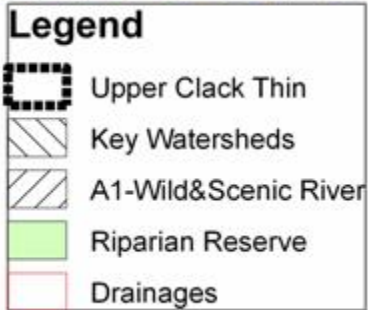
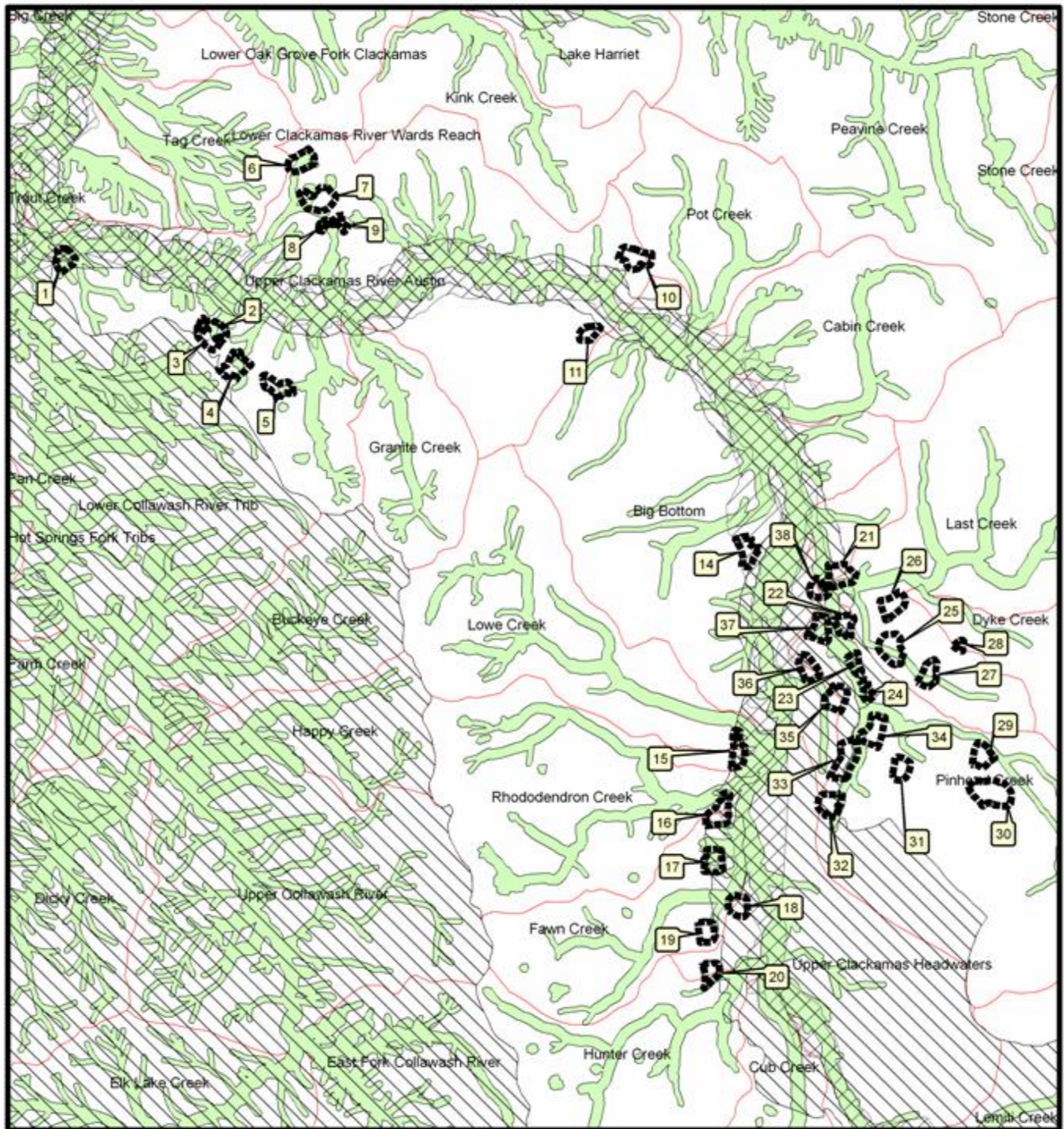
Legend

-  Upper Clack Thin
-  High
-  Moderate
-  Low

Earthflow

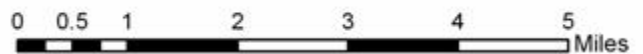
Upper Clack Thinning

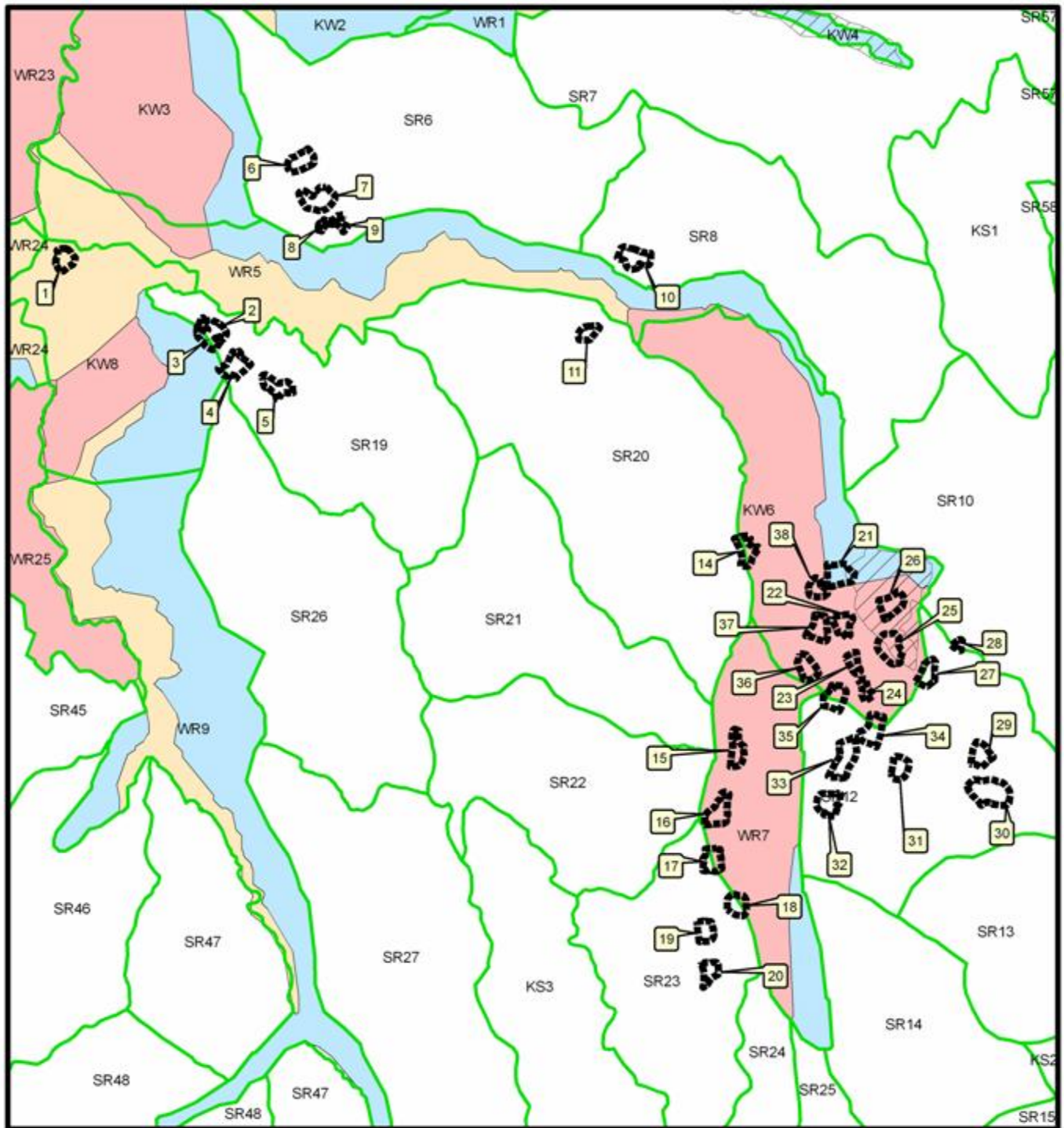







Watersheds

Upper Clack Thinning

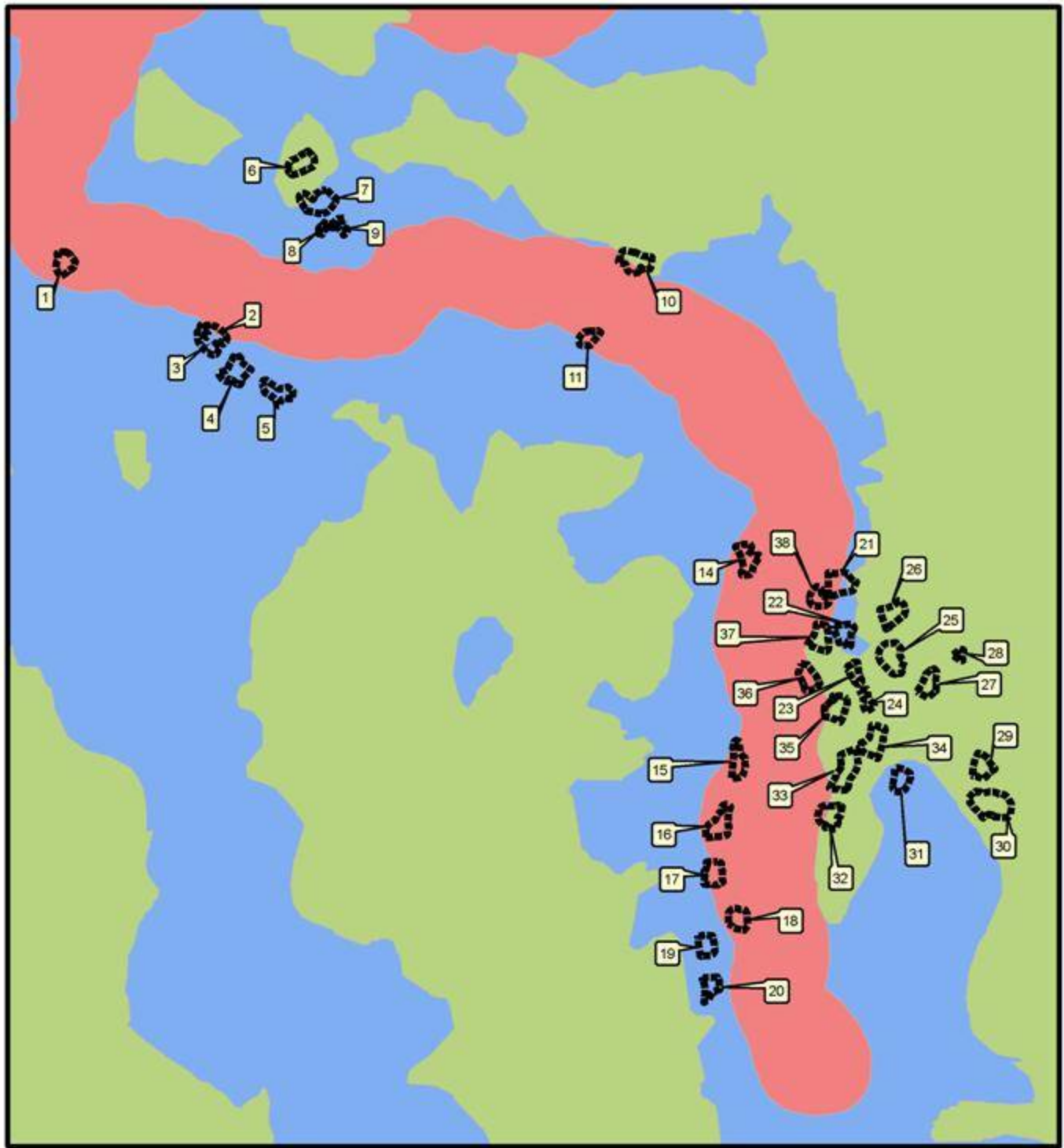





Legend **Deer and Elk** **Upper Clack Thinning**

	Upper Clack Thin		Crucial Winter Range
	Deer&Elk analysis areas		High Value Winter Range
	Summer Range		Moderate Winter Range
	Designated Winter Range		








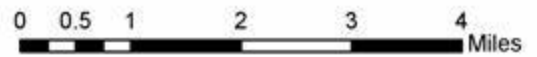
Legend

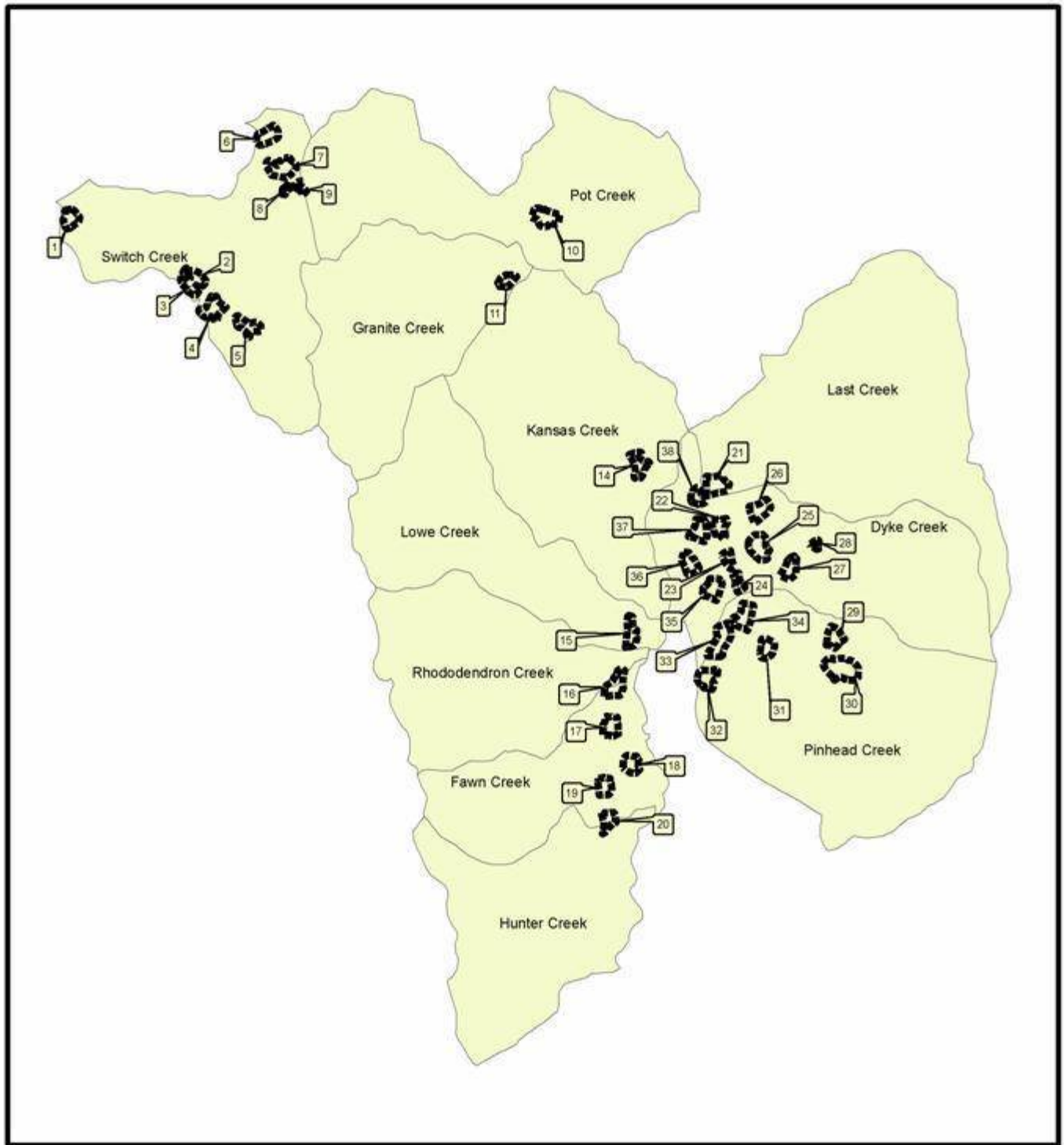
 Upper Clack Thin

Visual Quality Objectives

-  Retention
-  Partial Retention
-  Modification

Upper Clack Thinning


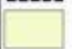




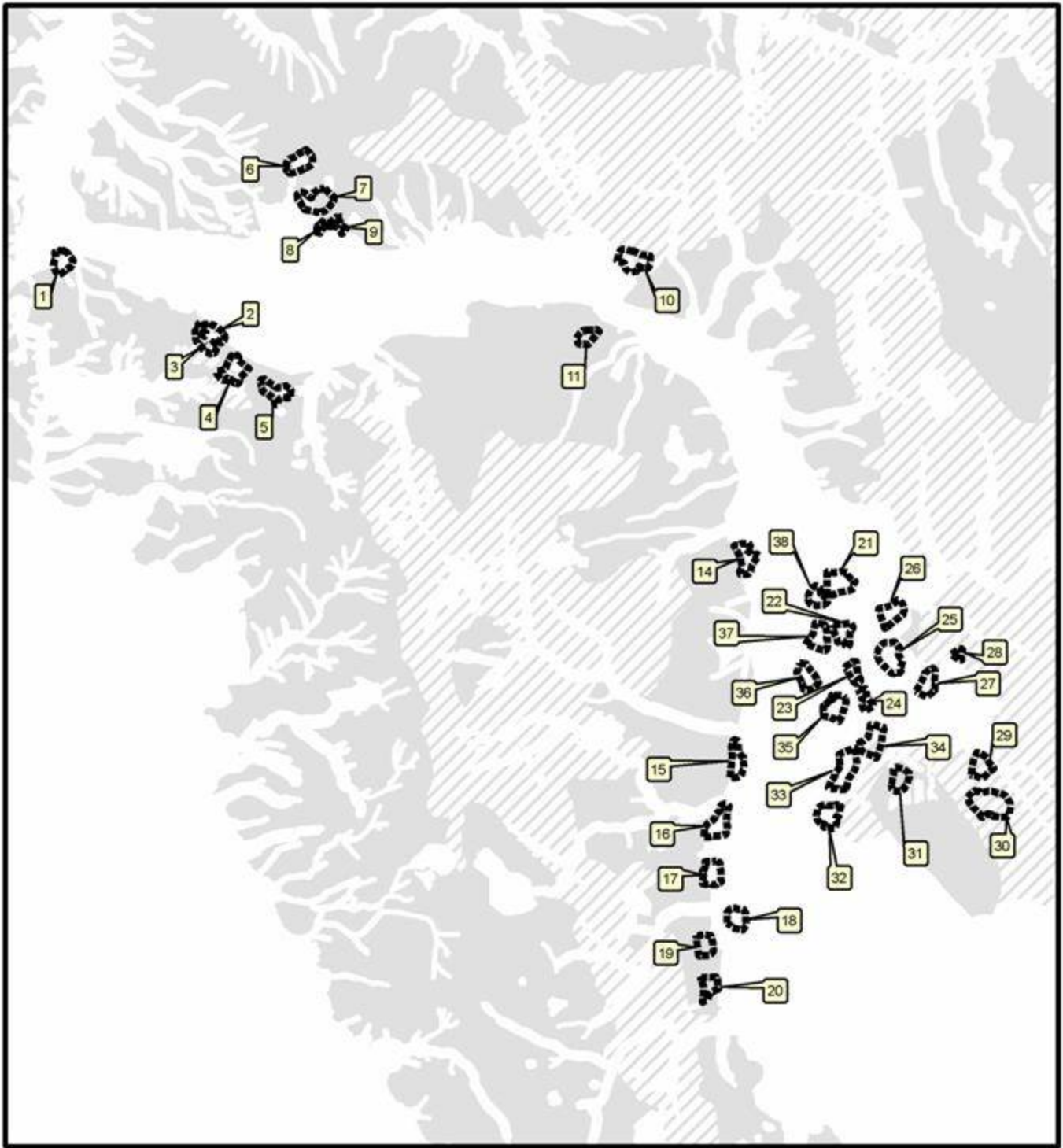
Upper Clack Thinning



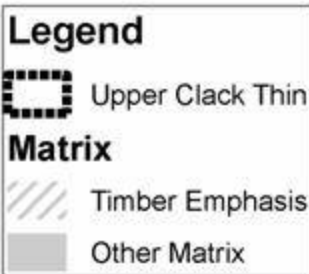
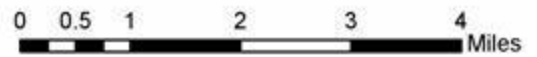
Legend

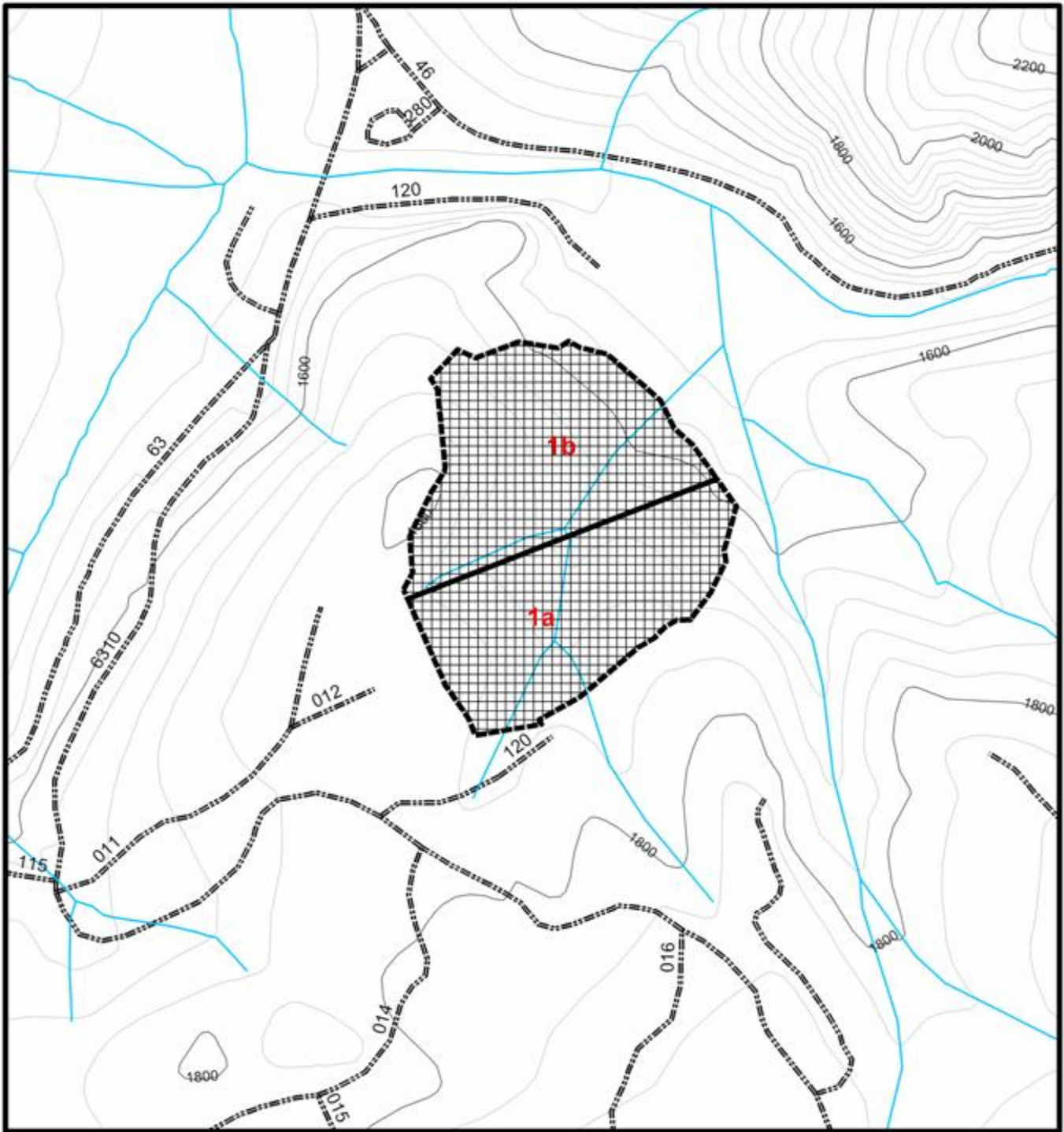
-  Upper Clack Thin
-  Snag Analysis Areas





Upper Clack Thinning





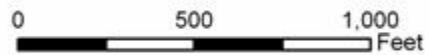
Legend

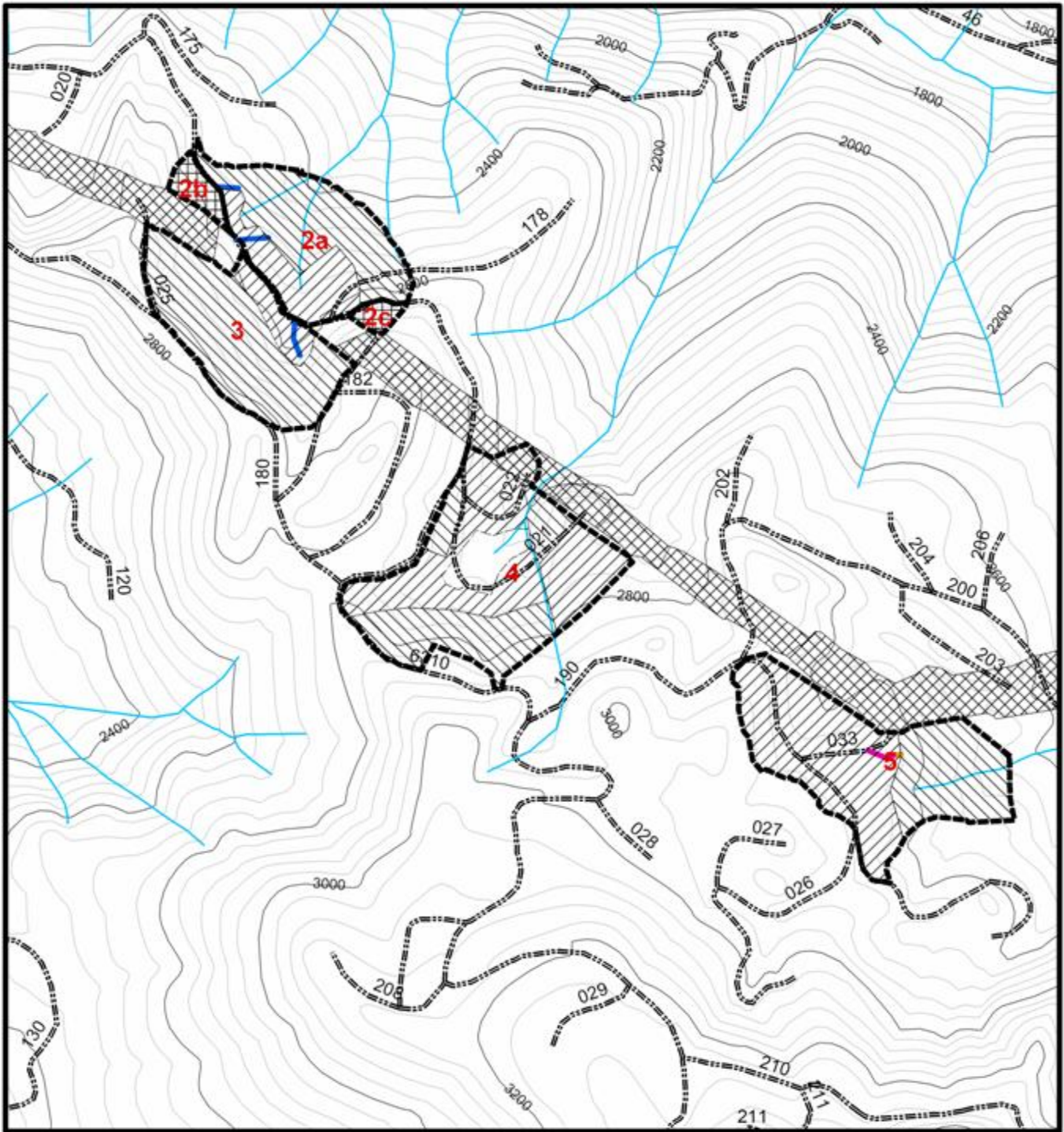
- Logging System**
- Ground
 - Helicopter
 - Skyline
 - powerline
- Road Work**
- Decommission
 - Berm

Unit Map

- Temporary Roads**
- Existing Temp
 - New Temp
 - Skid Temp
 - Old System

Upper Clack Thinning





Legend

- Logging System**
- Ground
 - Helicopter
 - Skyline
 - powerline

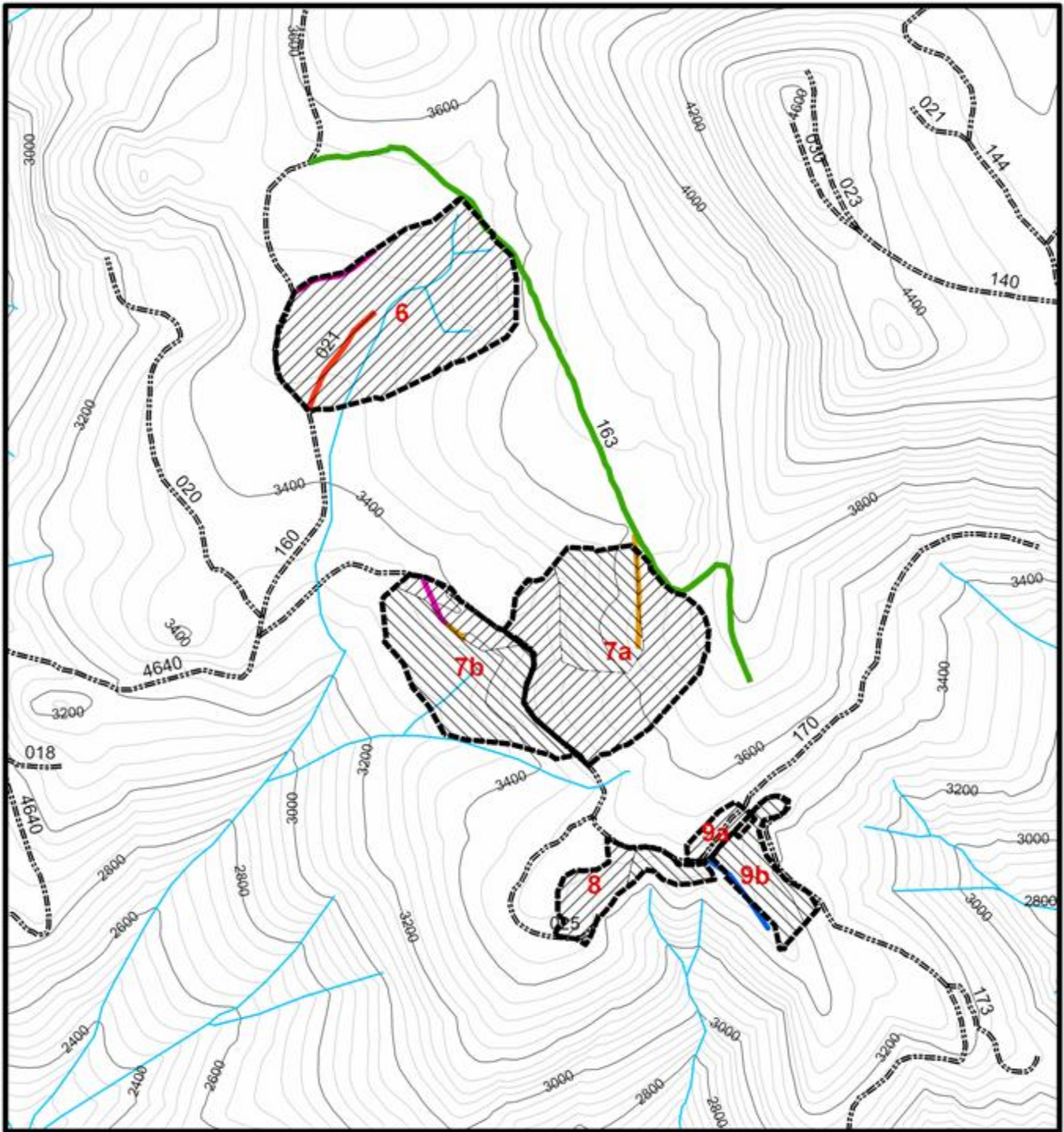
- Road Work**
- Decommission
 - Berm

Unit Map

- Temporary Roads**
- Existing Temp
 - New Temp
 - Skid Temp
 - Old System

Upper Clack Thinning





Legend

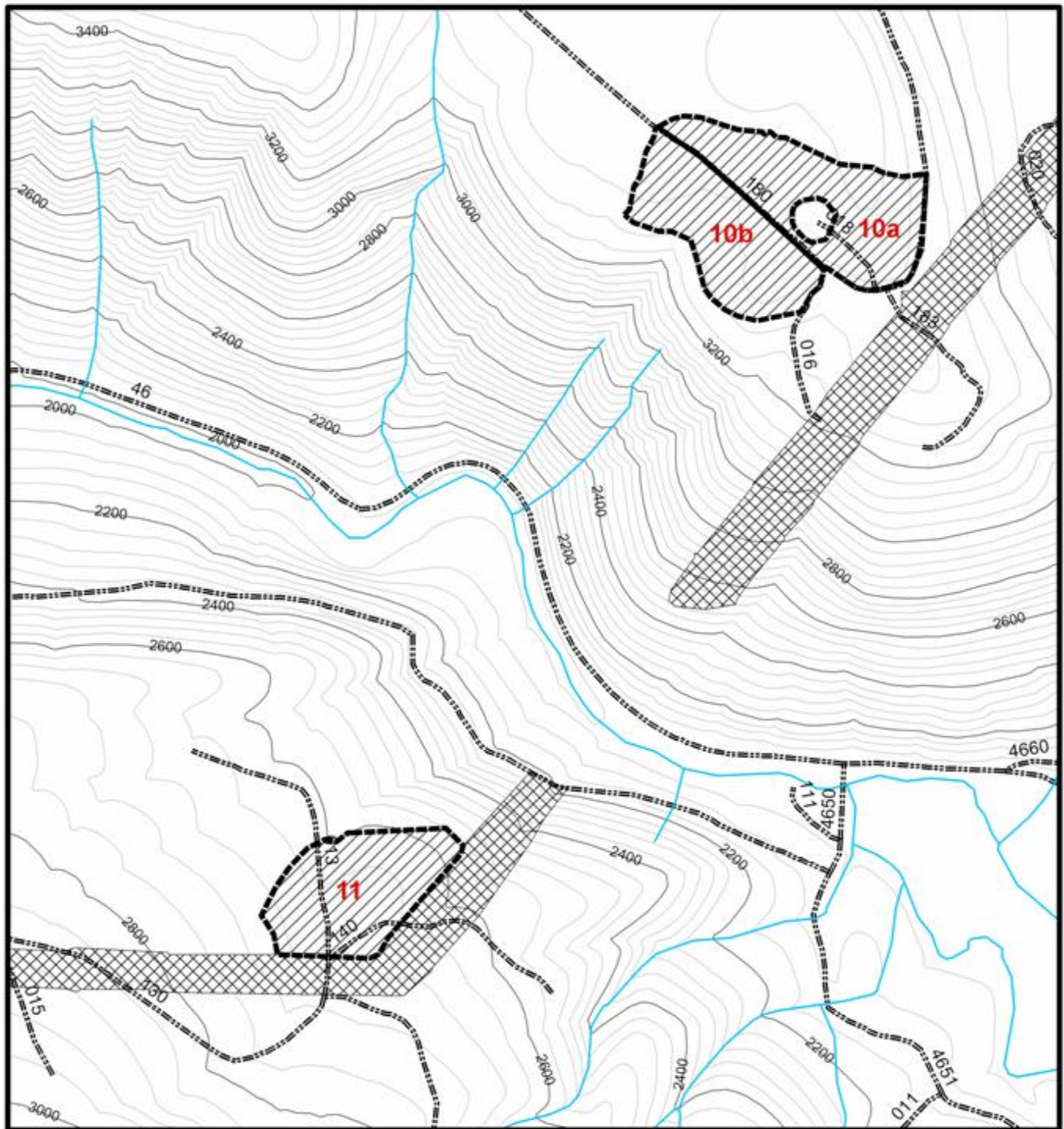
- Logging System Road Work**
-  Ground
 -  Helicopter
 -  Skyline
 -  powerline

Unit Map

- Temporary Roads**
-  Decommission
 -  Berm
 -  Existing Temp
 -  New Temp
 -  Skid Temp
 -  Old System

Upper Clack Thinning





Legend

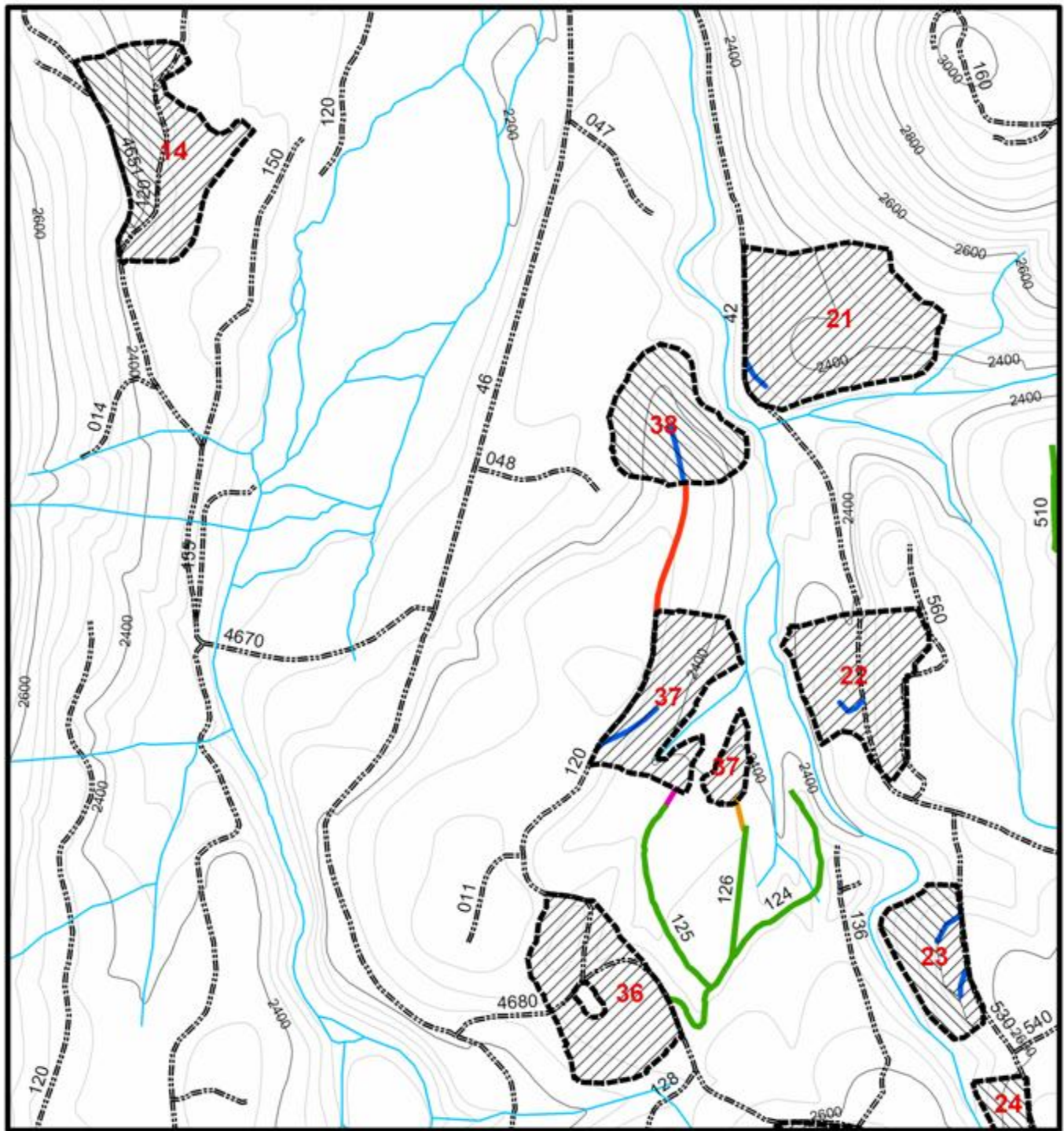
- | Logging System | | Road Work | |
|---|------------|---|--------------|
|  | Ground |  | Decommission |
|  | Helicopter |  | Berm |
|  | Skyline | | |
|  | powerline | | |

Unit Map

- | Temporary Roads | |
|---|---------------|
|  | Existing Temp |
|  | New Temp |
|  | Skid Temp |
|  | Old System |

Upper Clack Thinning





Legend

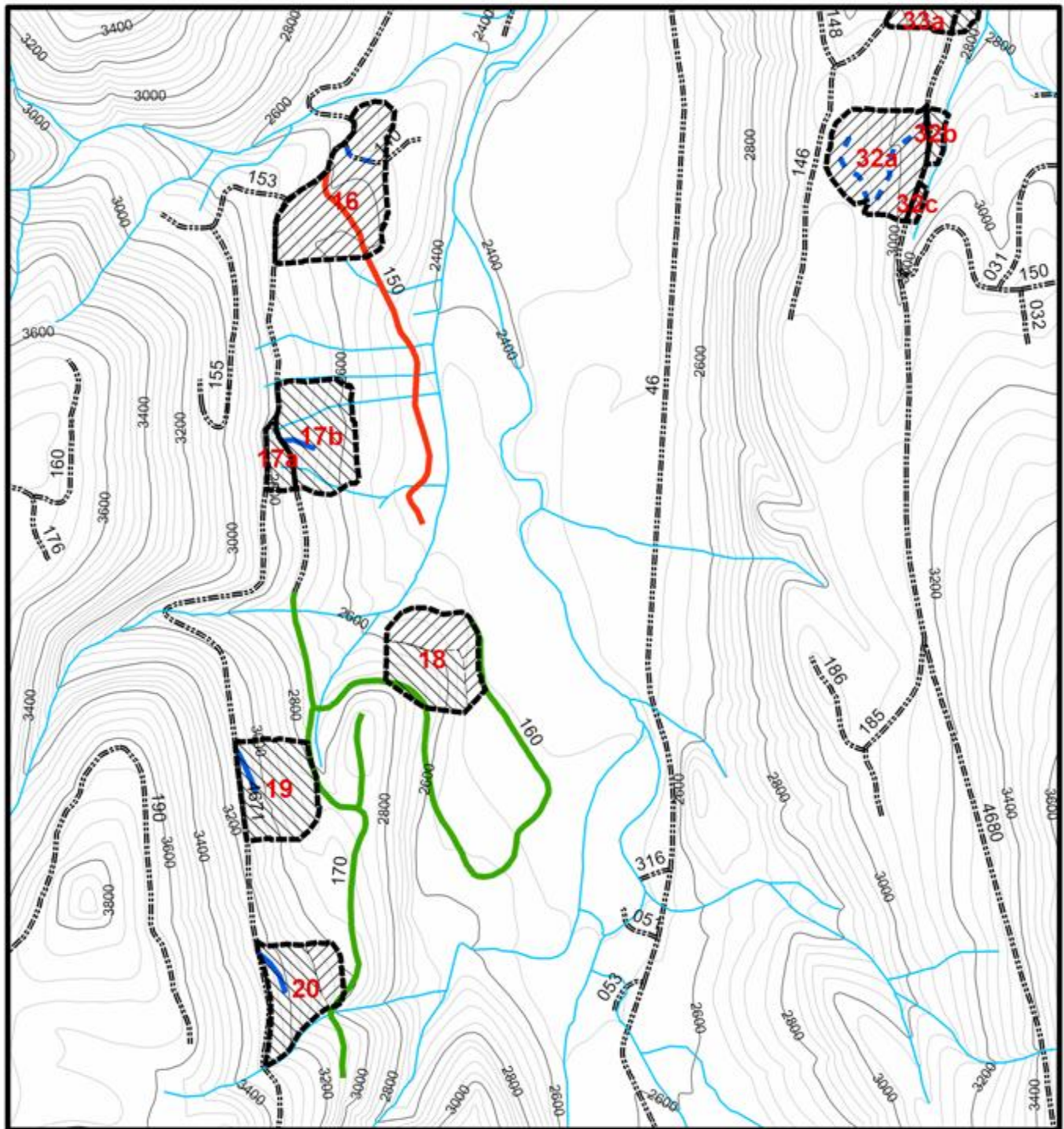
- Logging System**
- Ground
 - Helicopter
 - Skyline
 - powerline
- Road Work**
- Decommission
 - Berm

Unit Map

- Temporary Roads**
- Existing Temp
 - New Temp
 - Skid Temp
 - Old System

Upper Clack Thinning





Legend

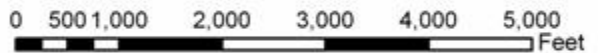
- Logging System**
-  Ground
 -  Helicopter
 -  Skyline
 -  powerline

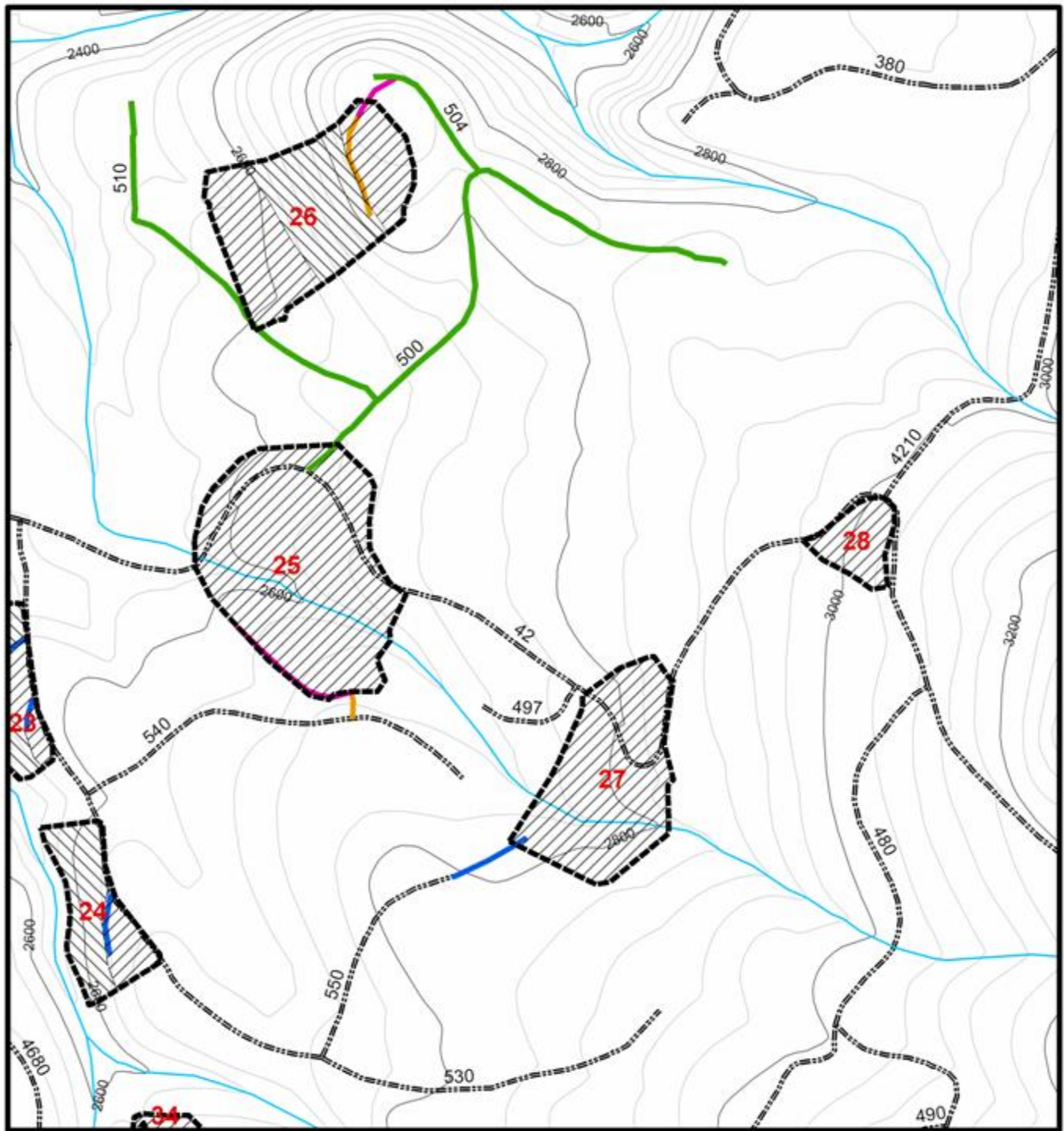
- Road Work**
-  Decommission
 -  Berm

Unit Map

- Temporary Roads**
-  Existing Temp
 -  New Temp
 -  Skid Temp
 -  Old System

Upper Clack Thinning





Legend

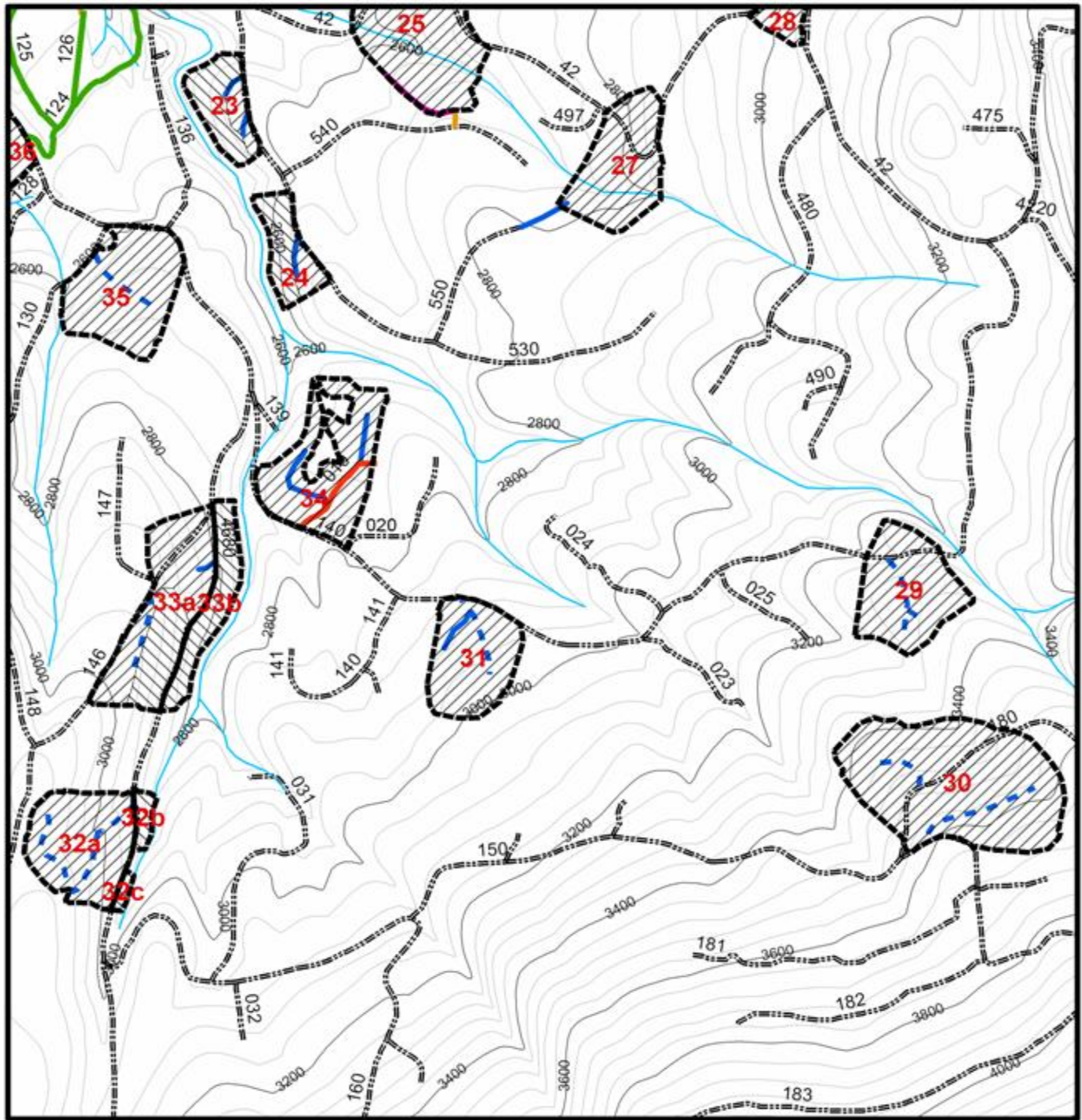
- Logging System**
- Ground
 - Helicopter
 - Skyline
 - powerline
- Road Work**
- Decommission
 - Berm

Unit Map

- Temporary Roads**
- Existing Temp
 - New Temp
 - Skid Temp
 - Old System

Upper Clack Thinning





Legend

Logging System Road Work

-  Ground
-  Helicopter
-  Skyline
-  powerline
-  Decommission
-  Berm

Unit Map

Temporary Roads

-  Existing Temp
-  New Temp
-  Skid Temp
-  Old System

Upper Clack Thinning

