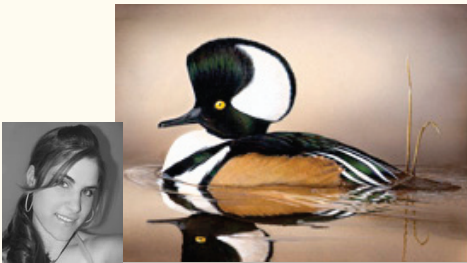


2009 Junior Duck Stamp Program and Contest



Nene Hawaiian Geese
2008 Junior Duck Stamp Competition First Place Winner
Seokkyun Hong, Age 18, Dallas, TX



Hooded Merganser, Third Place
Rebekah Nastav, Age 17
Amoret, MO



Ruddy Ducks, Second Place
Lydia Han, Age 15, San Jose, CA

“Conservation is our respect for the past, participation of the present, and our responsibility to the future.”

2008 Conservation Message Winner, Jeriel Chalk, CO



Contents

Conservation Through Science and the Arts	3
The Junior Duck Stamp and The Federal Duck Stamp	4
Special Information for Teachers or Supervising Adults.....	5
Procedures for Entering the Contest	6
Permitted Species	8
Special Provisions and Authorities	9
Junior Duck Stamp Coordinators and State Receiving Sites.....	11
Original Artwork and Integrity	14

An increasing body of evidence shows, that a relationship with the natural world helps children become healthier in body and mind — the Junior Duck Stamp program is a wonderful gateway to that relationship.”

H. Dale Hall, Director, U.S. Fish and Wildlife Service



Placed in the Top 5 of the 2008 National Competition

Ohio Best of Show

Lily Spang
Age 15, Acrylic Paint



Placed in the Top 5 of the 2008 National Competition

South Dakota Best of Show

Nate Buchholz
Age 18, Acrylic Paint



Placed in the Top 5 of the 2008 National Competition

Pennsylvania Best of Show

Ashley Matters
Age 18, Acrylic Paint



Placed in the Top 10 of the 2008 National Competition

Alaska Best of Show

Sara Firth
Age 15, Color Pencil



Placed in the Top 10 of the 2008 National Competition

Colorado Best of Show

Jeriel Chalk
Age 17, Color Pencil



Placed in the Top 10 of the 2008 National Competition

Iowa Best of Show

Alex Murillo
Age 17, Acrylic Paint

Conservation Through Science and the Art

Junior Duck Stamp Program

This Conservation and Design Program is a dynamic educational program designed to teach wetland habitat and waterfowl conservation to students in kindergarten through high school. Using scientific and wildlife observation principles, the program helps students communicate visually what they have learned by creating an entry for the Junior Duck Stamp Program art contest. This non-traditional pairing of subjects brings new interest to both science and the arts. It crosses cultural, ethnic, social, and geographic boundaries to teach greater awareness of our Nation's natural resources.

Hands-on Learning

Preparation for the Junior Duck Stamp contest and involvement in the program requires students to learn the fundamental principles of anatomy and environmental science, and can be a valid barometer of a student's grasp of these topics. The program also provides an opportunity for students to express, artistically, their knowledge of the diversity, interdependence, and beauty of wildlife. In fact, preparation for the program often includes a visit to a national wildlife refuge, a prime location not only for observing wildlife, but also for the hands-on educational experiences at visitor centers.

How the competition works

The Junior Duck Stamp competition begins each spring when students submit their artwork to a state or territory contest. At the state level, students are judged in four groups according to grade level: K-3, 4-6, 7-9, and 10-12. Three first, three second, and three third place entries, along with 16 honorable mentions, are selected for each group. Contest judges select a "Best of Show" from the twelve first place winners. Each state or territory "Best of Show" is then submitted to the Federal Duck Stamp Office and entered into the National Junior Duck Stamp Contest. To further the interdisciplinary goals of the program, students are also encouraged, but not required, to include a conservation message on their entry form along with their artwork. The conservation message is judged in some states, and at the national level for "Best of Show" winners. The message should explain something the student has learned about wetland habitats, conservation, or waterfowl. It may also be a statement encouraging others to learn about and participate in conservation.

State and National Recognition

The first place art from the national contest is used to create a National Junior Duck Stamp each year. The stamp is sold by the U.S. Postal Service and Amplex Corporation consignees for \$5 per stamp. Although the stamp isn't valid for postage, proceeds from the sale of stamps support conservation education and provide awards and scholarships for participating students, teachers, and schools.

Two Types of Federal Duck Stamps

Each Federal Duck Stamp has a special purpose. The Federal Migratory Bird Hunting and Conservation Stamp was created in 1934 to help fund the purchase and conservation of our Nation's wetlands. The Federal Junior Duck Stamp was modeled after the Federal Conservation Duck Stamp and was created in 1968 to provide awards and incentive to students learning about wetland habitat and waterfowl.

How Each Stamp is Used

Neither of the Federal Duck Stamps can be used for postage. The Federal Conservation Stamp is required on waterfowl hunting permits, is a collector's item, and serves as an entrance pass to National Wildlife Refuges where entrance fees are charged. The Junior Duck Stamp is becoming a collector's item, and provides awards and incentives to students participating in the Junior Duck Stamp Program.

Over the years, sales of Federal Conservation Stamps has generated more than \$700 million, helping to acquire or lease more than 5.2 million acres of waterfowl habitat in the United States. These conservation lands are managed by the U.S. Fish and Wildlife Service's National Wildlife Refuge System. Students can find many opportunities to observe waterfowl and see wetland habitat on National Wildlife Refuges.

Where to Purchase Duck Stamps

Federal Conservation Duck Stamps are sold for \$15 in many U.S. Postal Service Offices across the country, at many sporting goods and outdoor-gear stores, over the Internet, and at many National Wildlife Refuges. The Junior Duck Stamp is available for \$5 from the U.S. Postal Service website and from many National Wildlife Refuges.

To learn more about the Junior Duck Stamp Program, visit: <http://www.fws.gov/juniorduck>, or contact your state coordinator using the contact information on page 11 of this brochure.

Special Information for Teachers and Supervising Adults

Please read and follow carefully:

Adults, please explain and discuss with your students the rules of this competition along with the special criteria upon which their artwork will be judged, including the ethics of art.

Important Guidance
on Creativity and Ethics

The entry must be the student's own creation and idea. Do not approve student work that carries any doubt as to its authenticity or originality. Please do not submit work that has been directly or indirectly copied from any published source. Students limited by environment or experience may rely on published images as guides when producing a work, especially when many references are used to develop an understanding of the subject represented in the entry. Students in grade groups III and IV (see Reference Form on page 16 for definition of groups) are required to submit a reference sheet along with their contest entry.

Aesthetic Criteria

Use the following questions to help students understand the meaning of aesthetic criteria and how to apply the criteria when developing their own illustrations:

- Form: Is the waterfowl anatomically accurate?
- Texture: Are the textures visually and physically appropriate to the species of waterfowl chosen?
- Line: Are the details necessary, correct, and effective?
- Colors: Are the colors in the illustration appropriate to the selected species and surrounding habitat? Does the illustration accurately depict the species of waterfowl in plumage, habitat, and season, in a realistic or decorative depiction of the bird or birds?
- Size: Is the visual statement appropriate for a 1½" × 1" stamp or will details in the illustration be lost when reduced in size?
- Shape: Is the design suited to a horizontal and rectangular stamp shape?
- Clarity of Visual Symbolism: Does the illustration communicate the purpose of the stamp, and can the elements of the illustration be easily identified?
- Spatial Divisions: Are there negative and positive areas within the illustration, and do they work together?

Proof of USA Residency

Students who enter the contest must be citizens of the United States, or have an official Immigration Visa, or a Green Card as proof of legal residency. A valid social security number or Visa number is required for the award of monetary prizes. Teachers, parents, and guardians should check to make sure all students who enter are U.S. citizens, or legal residence in this country. A valid social security number or Visa number must accompany the State "Best of Show" entry when provided to the national contest.

Procedures for Entering the Contest

Contest Deadlines

- **Artwork with entry and reference forms must be postmarked by midnight, March 15, 2009**
(Note: North Carolina deadline is January 18; South Carolina's deadline is January 30; and Ohio's deadline is March 1).
- **Send entries and forms to your state's Junior Duck Stamp State Coordinator (see contact list on page 11). DO NOT** send entries to the Federal Duck Stamp Office. For students attending military school abroad, send the entry to the coordinator in the state of the student's legal residence. A Junior Duck Stamp Contest entry form and reference form are available for download from the Junior Duck Stamp website <<http://www.fws.gov/juniorduck>>

Contest Eligibility — Who May Participate?

- K-12 students attending public, private, tribal, or home schools in the United States and the U.S. Territories are eligible to enter as long as they are U.S. citizens, resident aliens, or nationals. U.S. citizens attending schools abroad may enter through their legal state of residence.
- A student who won first place in the National Junior Duck Stamp Contest the preceding year **may not submit an entry in the current year's contest.**
- One entry per student.
- Teachers or supervising adults should encourage all students to participate in the Junior Duck Stamp program and enter the art contest. In the case of foreign exchange students, their artwork may be judged at the state level, but if awarded State Best of Show, the entry will not be forwarded and entered in the national contest.

Technical Requirements for Design and Submission of Entry

- The physical size of submitted artwork must be 9"× 12".
- Entries must be less than ¼" thick.
- Image layout must be **horizontal**.
- Image must be a live portrayal of a native North American duck, swan, or goose (refer to eligible species list on page 8).
- Entries should not be matted.
- There should be no border around the image.
- A loose, detachable cover sheet may be laid over the art face to protect it during shipping. Spray chalk and pastel entries with a fixative to eliminate possible scuffing and smudging during transfer of artwork.
- Signatures are not allowed on the front of the artwork. Should this entry win, a signature may interfere with the final stamp design.

An entry may be multi-color, black and white, or a single color; it may be rendered in ink, paint, pastel, crayon, or pencil. Techniques may include scratch-board, airbrush, linoleum printing, paper collage, dry brush, crosshatch, pointillism, etc. No photography, weak pencil, or computer-generated art will be accepted. No lettering, words, signatures, or initials may appear on the front of the artwork. Inclusion of such markings will result in disqualification. Design entries must be the contestant's original, hand-illustrated creation and may not be traced or copied from published photographs or other artists' works. Photographs taken by the student may be used as references in the development of the design. Computers or other mechanical devices may not be used in creating artwork.

Creating Your Own Illustration

Scenes should depict birds in their natural habitat; for example, sea ducks should be shown in ocean areas. Feather colors should be appropriate to the time of the year depicted by the environment. Decoratively designed birds are to receive equal voting consideration as realistic depictions, as long as they are anatomically correct according to the species depicted.

Original Artwork Requirement

Students should not reproduce another artists' visual images and present them as their own creative artwork. **Only work that is the unique creation of the individual student should be entered into competition.** Please do not submit work which has been directly or indirectly copied from any published source. Students limited by environment or experience may rely on multiple published images as guides when producing an artwork entry, especially when many references are used to develop an understanding of the subject represented in the entry. The entry must be the student's own creation and idea.

Students in all grade groups should review the Original Design Requirements on page 14 and the Reference Form on page 16. **Students in grade groups III and IV must submit a Reference Form with their Junior Duck Stamp Contest Entry.**

Permitted Species

Please submit an entry featuring one of the species listed below. Contact the state coordinator for questions regarding the permitted species list. Note: Mute swans are not a permitted species.

- A. Whistling Ducks
1. Fulvous Whistling-Duck (*Dendrocygna bicolor*)
 2. Black-bellied Whistling-Duck (*Dendrocygna autumnalis*)
- B. Swans
1. Trumpeter Swan (*Cygnus buccinator*, formerly *olor buccinator*)
 2. Tundra Swan (*Cygnus columbianus*, formerly *olor columbianus*)
- C. Geese
1. Greater White-fronted Goose (*Anser albifrons*)
 2. Snow Goose, including blue phase (*Chen caerulescens*)
 3. Ross's Goose (*Chen rossii*)
 4. Emperor Goose (*Chen canagica*)
 5. Canada Goose (*Branta canadensis*)
- D. Brant (*Branta bernicla*)
- E. Dabbling Ducks
1. Wood Duck (*Aix sponsa*)
 2. American Wigeon (*Anas americana*)
 3. Gadwall (*Anas strepera*)
 4. Green-winged Teal (*Anas crecca*)
5. Mallard (*Anas platyrhynchos*)
 6. Mottled Duck (*Anas fulvigula*)
 7. American Black Duck (*Anas rubripes*)
 8. Northern Pintail (*Anas acuta*)
 9. Blue-winged Teal (*Anas discors*)
 10. Cinnamon Teal (*Anas cyanoptera*)
 11. Northern Shoveler (*Anas clypeata*)
- F. Diving Ducks
1. Canvasback (*Aythya valisineria*)
 2. Redhead (*Aythya americana*)
 3. Ring-necked Duck (*Aythya collaris*)
 4. Greater Scaup (*Aythya marila*)
 5. Lesser Scaup (*Aythya affinis*)
- G. Sea Ducks
1. Common Eider (*Somateria mollissima*)
 2. King Eider (*Somateria spectabilis*)
 3. Spectacled Eider (*Somateria fisheri*)
 4. Steller's Eider (*Polysticta stelleri*)
 5. Harlequin Duck (*Histrionicus histrionicus*)
 6. Long-tailed Duck, formerly Oldsquaw (*Clangula hyemalis*)
7. Black Scoter (*Melanitta nigra*)
 8. Surf Scoter (*Melanitta perspicillata*)
 9. White-winged Scoter (*Melanitta fusca*)
 10. Bufflehead (*Bucephala albeola*)
 11. Barrow's Goldeneye (*Bucephala islandica*)
 12. Common Goldeneye (*Bucephala clangula*)
- H. Mergansers
1. Hooded Merganser (*Lophodytes cucullatus*)
 2. Red-breasted Merganser (*Mergus serrator*)
 3. Common Merganser (*Mergus merganser*)
- I. Stiff Tails
1. Ruddy Duck (*Oxyura jamaicensis*)
 2. Masked Duck (*Oxyura dominica*)
- J. Hawaiian Ducks
1. Nene (*Branta sandvicensis*)
 2. Koloa (*Anas wyvilliana*)
 3. Laysan Duck (*Anas laysanensis*)

Special Provisions and Authorities

By participating in the Junior Duck Stamp Contest, each student, teacher, and legal guardian acknowledges the following rights and authorities and willingly agrees to each of these conditions:

The Department of the Interior,
U.S. Fish and Wildlife Service:

1. Reserves the exclusive right to authorize the reproduction of the national first-place winning design, including on stamps and various licensed products, and to photograph the winning stamp design without compensation to the student.
2. Has the right to use the name, artwork, and photographs of the student for promotional purposes without compensation to the student.
3. May disqualify any entry submitted to the Junior Duck Stamp contest that has the appearance of a plagiarized submission.
4. Will not insure the entries it receives or be responsible for loss or damage of the entries. In the event of an address change, it is the student's responsibility to inform the U.S. Fish and Wildlife Service of this change. Artwork unclaimed after 1 year from the date of the contest may be destroyed.
5. May send artwork on tour around the United States. Artwork on tour may be handled by a third party.
6. Requires that the winning artist provide autographs on Junior Duck Stamps and Junior Duck Stamp products without charge to the public or Federal Government.

Judging and Awards

All judging procedures will be open to the general public. Artwork entries will be judged on the basis of original design, anatomical accuracy, artistic composition, and suitability for reproduction on a 1" by 1½" stamp.

Judging will continue until awards have been allocated for first, second, and third place, plus honorable mention. For each state, district, or territory, there will be up to 100 awards: 12 first places, 12 second places, 12 third places, and up to 64 honorable mentions. One student's design will be selected from the 12 first place winners as "Best of Show." Notification of winners will be made as soon as possible.

Conservation Message Award	<p>Each student is encouraged, but not required, to write a short conservation message that expresses the spirit of what they have learned through classroom discussions, research, and planning for their Junior Duck Stamp Contest entire. Please limit the length of the conservation message to the space provided on the entry form.</p> <p>Only one message per state is judged at the national level. States submit the Best of Show winner’s conservation message. For more information regarding your state’s conservation message contest, please contact your state coordinator.</p>
Awards at the State Level	<p>Recognition and prizes will vary from state to state; however, all entrants will receive certificates of participation, and winners will receive special ribbons. Teachers and supervising adults are encouraged to submit artwork from every participant in their program or to work with their State Junior Duck Stamp Coordinator to ensure every participant receives a certificate.</p>
Awards at the National Level	<p>In acknowledgment of the integral part teachers and parents play in education and in the future of our Nation’s youth, the national winner, one parent or guardian, and the winner’s teacher will receive a free trip to participate in the First Day of Sale ceremony in late June/early July.</p>
Cash prizes at the National Level	<p>National First Place\$5,000 National Second Place\$3,000 National Third Place\$2,000 National Conservation Message First Place \$500</p>
Return of Entries	<p>All entries will be returned to the students or schools. Non-winning entries will be returned by June 1. Winning stamp designs will be returned up to 1 year after the state contest date. For questions regarding your artwork, please contact your state, territory, or district coordinator (see list on page 11). If artwork is unclaimed, the U.S. Fish and Wildlife Service will not be obligated to trace the location of the artist to return the artwork. All unclaimed entries may be destroyed 1 year from the date of the contest. Every effort will be made to safely return artwork to the students. In some areas, teachers will be notified to pick up the work at a central location.</p>
Display of Winning Artwork	<p>Each state, district, or territory Best of Show entry will be displayed at the Federal Duck Stamp Contest judging-event, waterfowl festivals, wildlife museums, and galleries throughout the United States. State programs may also choose to display the top winning artwork.</p>

State Junior Duck Stamp Coordinators and Receiving Sites

Alaska

Tamara Zeller
Division of Migratory Bird
Management
1011 E. Tudor Road, MS 201
Anchorage, AK 99503
907 / 786 3517
tamara_zeller@fws.gov

Alabama

Kevin Hamrick
Wheeler NWR
2700 Refuge Headquarters Road
Decatur, AL 35603
256 / 350 6639
kevin_hamrick@fws.gov

America Samoa

Mary Jane Porter
Department of Marine
& Wildlife Resources
PO Box 3730
Pago Pago, AS 96799-3730
011 - 684 / 633 4456
dmwr@samoatelco.com

Arizona

Denise Brausch / Margot Bissell
1611 North 2nd Avenue
Ajo, AZ 85321
520 / 387 6483

Arkansas

Mendy Boyles
Arkansas 4-H Center
One 4-H Way
Little Rock, AR 72223
501 / 821 6884
mboyles@uaex.edu

California

Marilyn Gamette
Sacramento NWR Complex
752 County Road 99W
Willows, CA 95988
530 / 934 2801
marilyn_gamette@fws.gov

Colorado

Seth Beres
Rocky Mountain Arsenal NWR
USFWS, Building 121
Commerce City, CO 80022-2108
303 / 289 0867
seth_beres@fws.gov

Connecticut

Chris Samor
CN Waterfowl Association
29 Bowers Hill Road
Oxford, CT 06478
203 / 888 0352
csamor16@comcast.net

Delaware

Trina Cale-Rosario
Delaware Division of Fish & Wildlife
4876 Hay Point Landing Road
Smyrna, DE 19977
302 / 653 2882 ext. 104
trina.rosario@state.de.us

Florida

Toni Westland
J.N. "Ding" Darling NWR
1 Wildlife Drive
Sanibel, FL 33957
239 / 472 1100
toni_westland@fws.gov

Georgia

Resee Collins
USFWS-Migratory Birds
1875 Century Boulevard, Suite 240
Atlanta, GA 30345
404 / 679 7051
resee_collins@fws.gov

Hawaii

Sandy Hall
USFWS, Pacific Island Office
300 Ala Moana Boulevard, Rm 5-311
Honolulu, HI 96850
808 / 792 9530
sandra_hall@fws.gov

Idaho

Susan Kain
Deer Flat NWR
13751 Upper Embankment Road
Nampa, ID 83686
208 / 467 9278
susan_kain@fws.gov

Illinois

Joe Bauer
Illinois Dept. of Natural Resources
1 Natural Resources Way
Springfield, IL 62702
217 / 782 6302
joe.bauer@illinois.gov

Indiana

Donna Stanley
Muscatatuck NWR
12985 E. US Hwy 50
Seymour, IN 47274
812 / 522 4352
donna_stanley@fws.gov

Iowa

Doreen Van Ryswyk
Neal Smith NWR
9981 Pacific Street
PO Box 399
Prairie City, IA 50228
515 / 994 3400
doreen_vanryswyk@fws.gov

Kansas

Lorrie Beck
Great Plains Nature Center
6232 East 29th Street North
Wichita, KS 67220
316 / 683 5499
lorrie_beck@fws.gov

Kentucky

Lee Andrews
Kentucky Field Office
330 West Broadway
Frankfort, KY 40601
502 / 695 0468
lee_andrews@fws.gov

Louisiana
Gay Brantley
North Louisiana Refuges Complex
11372 Highway 143
Farmerville, LA 71241
318 / 387 1114
gay_brantley@fws.gov
Maine
Karrie Schwaab
Rachel Carson NWR
321 Port Road
Wells, ME 04090
207 / 646 9226
karrie_schwaab@fws.gov
Maryland
Susan Minter
Patuxent Research Refuge
10901 Scarlet Tanager Loop
Laurel, MD 20708-4027
301 / 497 5789
mdjuniorduckstamp@earthlink.net
Massachusetts
Pam Landry
MassWildlife (Massachusetts
Division of Fisheries and Wildlife)
One Rabbit Hill Road
Westboro, MA 01581
508 / 389 6310
pam.landry@state.ma.us
Michigan
Becky Goche
Shiawassee NWR
6975 Mower Road
Saginaw, MI 48601
989 / 759 1669
becky_goche@fws.gov
Minnesota
Mara Koenig
Minnesota Valley NWR
3815 American Boulevard East
Bloomington, MN 55425
952 / 858 0710
mara_koenig@fws.gov

Mississippi
Rebecca Gruneberg
MS Museum of Natural Science
2148 Riverside Drive
Jackson, MS 39202
601 / 354 7303
rebeccag@mmns.state.ms.us
Missouri
Tim Haller
Big Muddy NFWR
4200 New Haven Dr.
Columbia, MO 65201
573 / 441 2799
tim_haller@fws.gov
Montana
Bob Danley
Lee Metcalf NWR
4567 Wildfowl Lane
Stevensville, MT 59870
406 / 777 5552 ext. 203
bob_danley@fws.gov
Nebraska
Lydia Patrick
Crescent Lake NWR Complex
115 Railway Street
Scottsbluff, NE 69361
308 / 635 7851 ext. 10
lydia_patrick@fws.gov
Nevada
Donna Withers
Stillwater NWR
1000 Auction Road
Fallon, NV 89406
775 / 423 5128
donna_withers@fws.gov
New Hampshire
Victor Young
NH Fish & Game Department
11 Hazen Drive
Concord, NH 03301
603 / 271 3211
vyoung@wildlife.state.nh.us

New Jersey
Lysa Helm
The Wetlands Institute
1075 Stone Harbor Blvd.
Stone Harbor, NJ 08247
609 / 368 1211
lhelm@wetlandsinstitute.org
New Mexico
Daniel Perry
Bosque del Apache NWR
P.O. Box 1246
Socorro, NM 87801
505 / 835 1828
daniel_perry@fws.gov
New York
Alison Penn
Long Island NWR Complex
360 Smith Road
P.O. Box 21
Shirely, NY 11967
631 / 286 0485
alison_penn@fws.gov
North Carolina
Patty Matteson
USFWS Raleigh Field Office
551 F. Pylon Drive
Raleigh, NC 27606
919 / 856 4520
patty_matteson@fws.gov
North Dakota
Jackie Jacobson
Audubon NWR
3275 11th Street NW
Coleharbor, ND 58531-9419
701 / 442 5474 ext. 17
jackie_jacobson@fws.gov
Ohio
Rebecca Hinkle
Ottawa NWR
14000 West State Route 2
Oak Harbor, OH 43449
419 / 898 0014
rebecca_hinkle@fws.gov

Oklahoma
 D'Anna Mallow
 Wichita Mountains NWR
 32 Refuge Headquarters Road
 Indianahoma, OK 73552
 580 / 429 3221
 d'anna_mallow@fws.gov
 Oregon
 Pam Johnson
 Oregon Coast NWR Complex
 2127 SE Marine Science Dr.
 Newport, OR 97365
 541 / 867 4550
 pam_johnson@fws.gov
 Pennsylvania
 Gary Stolz
 John Heinz NWR
 8601 Lindbergh Blvd.
 Philadelphia, PA 19153
 215 / 365 3118
 gary_stolz@fws.gov
 Rhode Island
 Janna Greenhalgh
 Rhode Island NWR Complex
 50 Bend Road
 Charlestown, RI 02813
 401 / 364 9124
 janna_greenhalgh@fws.gov
 South Carolina
 Steve Bates
 South Carolina
 Department of Natural Resources
 1000 Assembly Street #209
 Columbia, SC 29202
 803 / 734 3885
 batess@dnr.sc.gov
 South Dakota
 Eric T. Davis
 D.C. Booth HNFH
 423 Hatchery Circle
 Spearfish, SD 57783-4643
 605 / 642 7730 ext. 221
 ericdavis@rushmore.com

Tennessee
 Joan Stevens
 Tennessee NWR
 3006 Dinkins Lane
 Paris, TN 38242
 731 / 642 2091
 joan_stevens@fws.gov
 Texas
 Jennifer L. Sanchez
 Texas Mid-Coast NWR Complex
 2547 CR 316
 Brazoria, TX 77422
 979-964-4011
 jennifer_sanchez@fws.gov
 Utah
 Betsy Beneke
 Bear River Migratory Bird Refuge
 2155 West Forest Street
 Brigham City, UT 84302
 435 / 734 6436
 betsy_beneke@fws.gov
 Vermont
 Eileen Nunez
 Missisquoi NWR
 29 Tabor Road
 Swanton, VT 05488
 802 / 868 4781
 eileen_nunez@fws.gov
 Virgin Islands
 William Coles
 VI Division of Fish & Wildlife
 45 Mars Hill
 Fredriksted, VI 00840
 340 / 713 2422
 wcoles@vitelcom.net
 Virginia
 Laurel Wilkerson
 Chincoteague NWR
 P.O. Box 62
 Chincoteague, VA 23336
 757 / 336 6122
 laurel_wilkerson@fws.gov

Washington
 Jackie LaRue
 Nisqually NWR
 100 Brown Farm Road
 Olympia, WA 98516
 306 / 753 9467
 jackie_larue@fws.gov
 Washington, DC
 Susan Minter & Duck Stamp Office
 Patuxent Research Refuge
 10901 Scarlet Tanager Loop
 Laurel, MD 20708-4027
 301 / 497 5789
 mdjuniorduckstamp@earthlink.net
 West Virginia
 Janet Butler
 Ohio River Islands NWR
 3868 Waverly Road
 Williamstown, WV 26187
 304 / 375 2923
 janet_butler@fws.gov
 Wisconsin
 Daniel Peterson
 Necedah NWR
 W7996 20th Street West
 Necedah, WI 54646
 608 / 565 2551
 daniel_peterson@fws.gov
 Wyoming
 Amy Goicoechea
 National Museum of Wildlife Art
 2820 Rungius Road
 P.O. Box 6825
 Jackson Hole, WY 83002
 307 / 732 5435
 agoicoechea@wildlifeart.org

Creating Original Artwork for the Junior Duck Stamp Program

As students participating in the Junior Duck Stamp Conservation and Design Contest, you will create your vision of the colorful, winged waterfowl that grace wetlands across North America. To do this, you'll study these beautiful creatures, reviewing pictures, images, or video. Perhaps you'll even have the opportunity to observe wildlife in their natural habitat at a national wildlife refuge, a park in your community, or your own backyard.

Artist integrity

The idea that each student artist is creating his or her own depiction of waterfowl and submitting that original creation as a Junior Duck Stamp Contest entry is an important aspect of this contest. The U.S. Fish and Wildlife Service encourages all students who participate in the Junior Duck Stamp Conservation and Design Contest to complete the reference worksheet on the next page. For students in grade groups III and IV, please submit the reference worksheet along with your entry. Do not attach the reference worksheet to your artwork, but include it in the envelope with your entry—or give it to your teacher to send along with your artwork. Students in grade groups I and II are encouraged to work with their teacher or parent to complete the reference form, but are not required to submit it with their entry.

Artistic Reference

This artistic reference form will encourage you, the young artist, to delve into your own sense of creativity while producing your original wildlife artwork.

When filling in your reference form:

- Include as much information as possible (see examples below)
- Reference all major sources
- For students in grade groups III and IV, you must include this reference sheet with your entry or your entry will be disqualified.

Reference Examples

Published References from Books, Magazines, or Posters	Photographer or artist last name, first name, Title Of The Book/ Magazine <i>Italicized</i> , with page numbers. i.e. Mueller, Keith. Waterfowl Concepts. Pages 6, 32, 54, 112.
References Not Found In A Book	Location Observed, Cable, Lee. Mallards on Backbay. i.e. Fredlund Gallery, Winter Park, Fl.
Personal Photographs	Photographers last name, first name, species photographed, location of photograph, date the photograph was taken. i.e. Herman, Amber, Mallards, Mississippi River, Davenport, Iowa May 2007.
Images from the Internet	Photographer or artist last name, first name, website address. i.e. Sevcik, Jan, www.naturephoto-cz.com/photos/sevcik/mallard—anas-platyrhyncos-5.jpg
Other Sources	Provide as much identifying information as possible.

How do I enter the contest?

To enter the Junior Duck Stamp Contest, fill out an entry form and reference form that are available for download from the Federal Junior Duck Stamp website <<http://www.fws.gov/juniorduck>>

Mail these in with your entry to your state Junior Duck Stamp Coordinator /receiving site. A list of receiving sites can be found on the Junior Duck Stamp website and on page 11 of this packet.

Going Green

This brochure is offered online at <http://www.fws.gov/juniorduck>. Rack cards announcing the brochure web address will be provided to State Coordinators to accommodate any schools or students without access to the Internet. A limited number of printed copies and CD versions of the brochure will be available through the Federal Duck Stamp Office upon request.

2009 Junior Duck Stamp Conservation and Design Contest Reference Form

Grade Group (check one)

Group I
Grades K-3

Group II
Grades 4-6

Group III
Grades 7-9

Group IV
Grades 10-12

Students in grade groups III and IV must submit this reference sheet along with their entry to the Junior Duck Stamp Contest. Visit <http://www.fws.gov/juniorduck> for more information about this Reference Form.

Student Information (Please print clearly)

First Name, Last Name

Reference Information

While creating your Junior Duck Stamp Contest entry, you likely reviewed many sources. Please include your major sources in the space below.

1. _____
2. _____
3. _____
4. _____
5. _____
6. _____
7. _____
8. _____
9. _____
10. _____



2009 Junior Duck Stamp Conservation and Design Contest Entry Form

<http://www.fws.gov/juniorduck>

For Office Use Only

Age Group **Group I** Grades K-3 **Group II** Grades 4-6 **Group III** Grades 7-9 **Group IV** Grades 10-12
(Check One)

Student Information For awards, please print clearly

First Name _____ Last Name _____ Age _____

Mailing Address (Street or P.O. Box) _____ Email Address _____

City _____ State _____ Zip Code _____

Parent Name _____ Parent Daytime Phone _____

Entry Information

Entry Title _____ Species of bird (from permitted species list) _____

Medium Used (i.e. acrylic, colored pencil) _____

Conservation Message

Please use only the space provided to write a message explaining what you have learned about conservation efforts, or why conservation is important to you. See website for sample messages.

Supervising Adult/Teacher: Please fill in the following information (Print Clearly)

First Name _____ Last Name _____

School/Studio/Organization/Troop Name _____ Daytime Phone _____

Mailing Address _____ City _____ State _____ Zip _____

Email Address _____

Please check one of the following: Parent Teacher Counselor Troop Leader Other

Supervising Adult: Fill in the STATE RECEIVING SITE address here (before duplicating)
Participants: Mail your art to this address.

- Before Mailing Did You:**
- Read the contest brochure?
 - For grade groups III and IV, include Reference Form?
 - Obtain required signatures?
 - Prepare entry as horizontal design on 9" x 12" media no more than 1/4" thick?
 - Affix entry form to the back of the entry?
 - Confirm the address of the STATE RECEIVING SITE? (addresses located on page 11 of brochure)
 - Postmark Materials by March 15, 2009? (North Carolina, Arizona by January 18, South Carolina by Jan. 30, Ohio by March 1)
 - Email questions to your STATE COORDINATOR?

AUTHENTICITY AND LIABILITY STATEMENT

DO NOT COPY THE WORK OF OTHERS. PLAGIARISM IS A CRIME! STUDENTS, PARENTS, AND TEACHERS, DO NOT SIGN THIS ENTRY FORM WITHOUT READING THE FOLLOWING STATEMENT:

I hereby certify that this is my original work and not copied or traced from published photos, magazines, books, illustrations, artists' published works, or other materials protected by copyright laws. I understand that the U.S. Fish & Wildlife Service and other sponsors are not responsible for loss or damage to my artwork. I grant exclusive rights to the U.S. Fish & Wildlife Service and its designees to use, alter, copy, publish, and display my artwork for reproduction and promotional purposes as they see fit without compensation to me, including the use of my photograph if taken at related a Junior Duck Stamp program function or submitted to a state or national coordinator. I further understand that the U.S. Fish & Wildlife Service has the exclusive right to understand that the U.S. Fish & Wildlife Service has the exclusive right to disqualify any entry whose authenticity is questionable.

Signature of Student _____ Date _____

Signature of Parent _____ Date _____

Signature of Teacher _____ Date _____

How did you hear about the Junior Duck Stamp Contest?

- School Art Studio Parent/Guardian Art Show
- Friend Internet Other

Spanish version of this entry form online at <http://www.fws.gov/juniorduck>
Para una version espanola de esta forma <http://www.fws.gov/juniorduck>



Federal Junior Duck Stamp Program
Connecting Children with Nature
Through Science and Art
<http://www.fws.gov/juniorduck>

For Relay Service Connection
TTY/Voice: 711

U.S. Fish & Wildlife Service
<http://www.fws.gov>

For Refuge Information
1 800 / 344 WILD

October 2008

