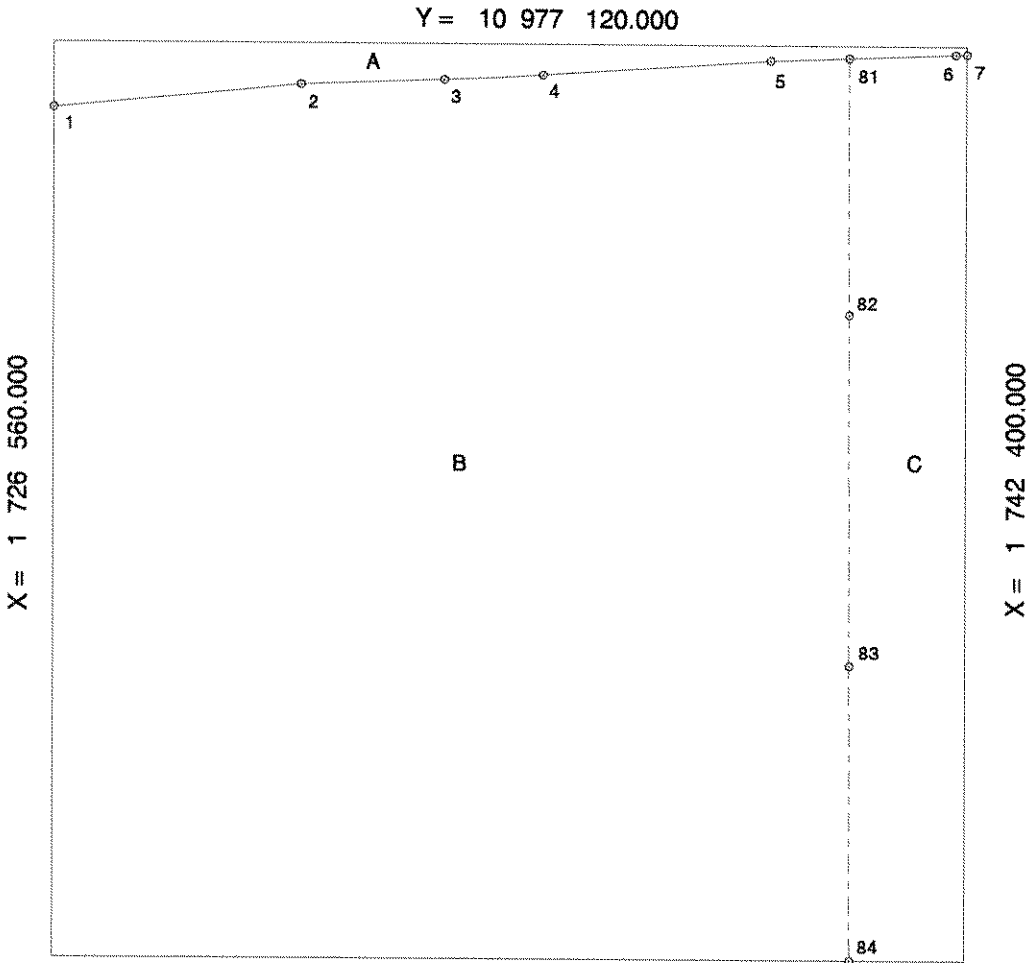


Supplemental Official OCS Block Diagram

OCS Planning Area Name Eastern Gulf of Mexico
 Leasing Map / OPD Name Pensacola
 Submerged Lands Act Boundary Radius 54 684.930

Leasing Map/
OPD Number NH16-05
 Block Number 770
 Datum NAD 27
 Units Feet
 Previous SOBD
Signature Date 02-JUN-1983



State Area A = 205.150000 ac
 Federal 8(g) Area B = 4829.200000 ac
C = 725.650000 ac
 Total Area 5760.000000 ac

	Offshore Intersections		Contributing Baseline Points		Tangent Baseline End Points	
	X	Y	X	Y	X	Y
1	1 726 560.000	10 975 987.530	* 1 - 2	1 715 905.270	11 029	902.130
2	1 730 844.220	10 976 397.940	* 2 - 3	1 727 211.020	11 030	985.170
3	1 733 331.670	10 976 491.050	3 - 4	1 731 286.120	11 031	137.710
4	1 735 044.870	10 976 582.110	* 4 - 5	1 731 286.120	11 031	137.710
5	1 738 996.400	10 976 854.360	* 5 - 6	1 736 100.510	11 031	469.410
6	1 742 208.030	10 976 973.760	6 - 7	1 740 176.410	11 031	620.940
7	1 742 400.000	10 976 981.240				
81	1 740 360.261	10 976 905.065				
82	1 740 372.644	10 972 449.187				
83	1 740 389.516	10 966 375.328				
84	1 740 403.662	10 961 280.000				

----- Military Mission Line
 ----- Submerged Lands Act Boundary

John G. Hayes 8/23/07
 For the Director, MMS Date

 For the State Date