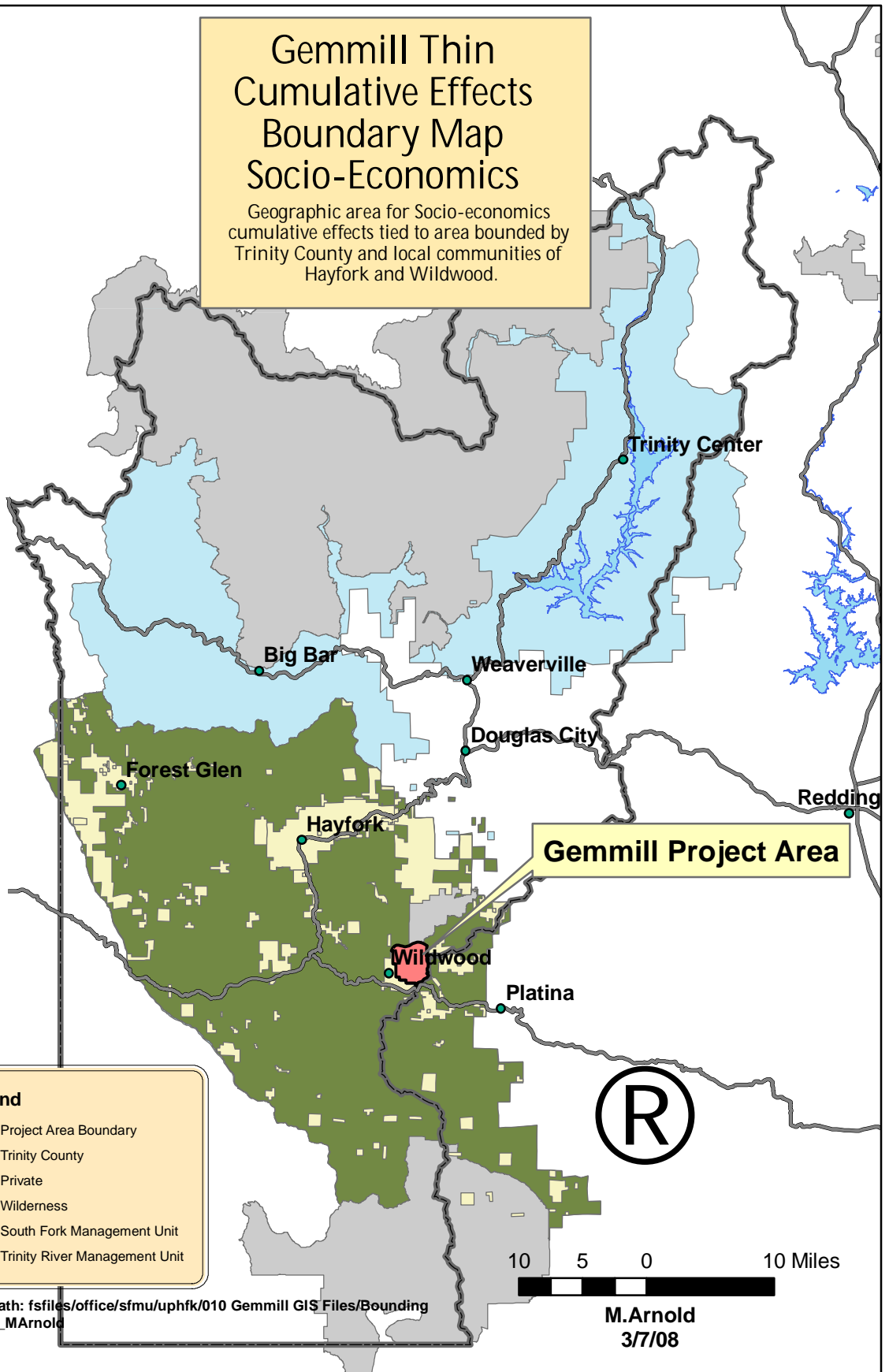


# Gemmill Thin Cumulative Effects Boundary Map Socio-Economics

Geographic area for Socio-economics  
cumulative effects tied to area bounded by  
Trinity County and local communities of  
Hayfork and Wildwood.



## Legend

- Project Area Boundary
- Trinity County
- Private
- Wilderness
- South Fork Management Unit
- Trinity River Management Unit

File path: fsfiles/office/sfmu/uphfk/010 Gemmill GIS Files/Bounding  
Maps\_MArnold

M.Arnold  
3/7/08