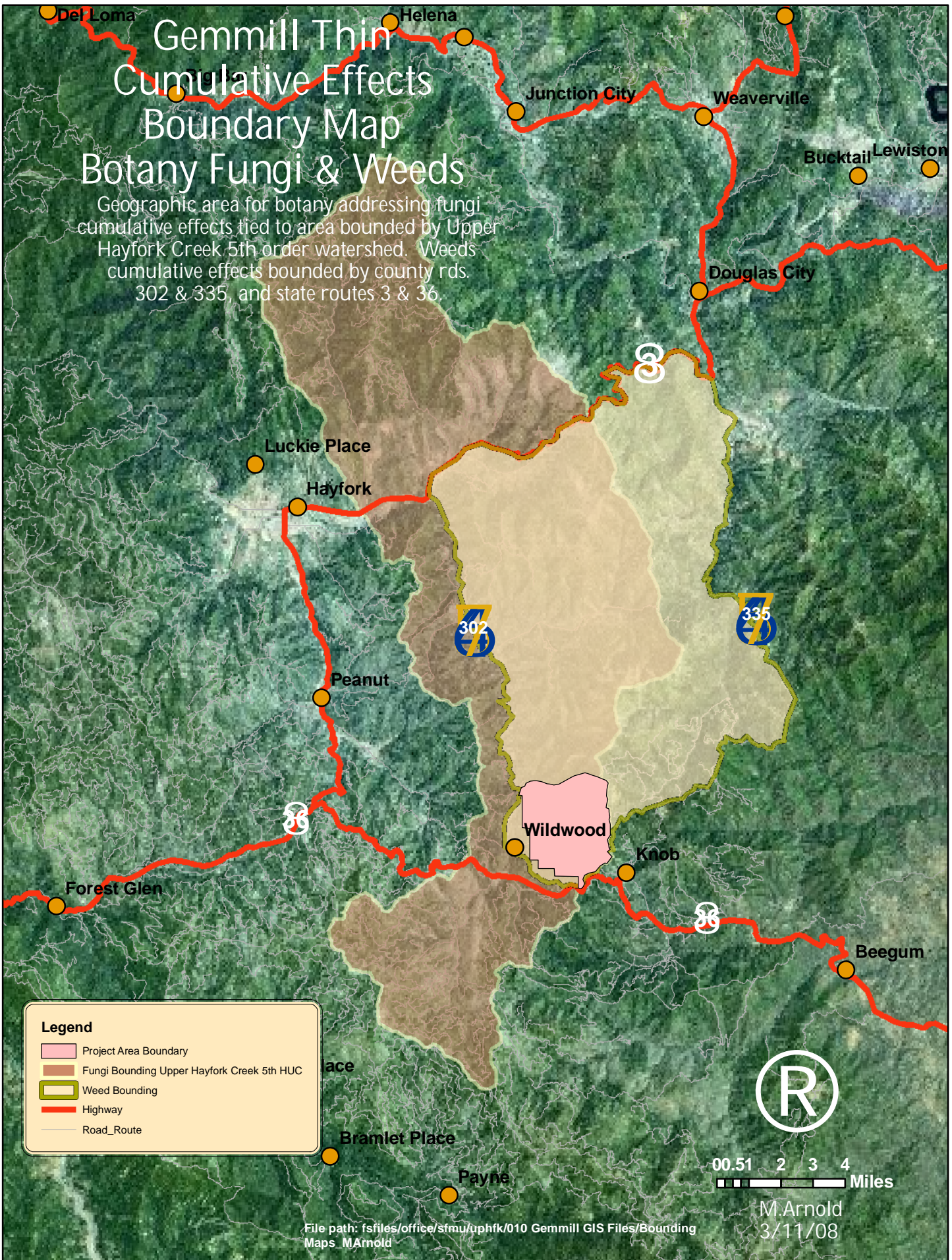


# Gemmill Thin Cumulative Effects Boundary Map Botany Fungi & Weeds

Geographic area for botany addressing fungi cumulative effects tied to area bounded by Upper Hayfork Creek 5th order watershed. Weeds cumulative effects bounded by county rds. 302 & 335, and state routes 3 & 36.



**Legend**

- Project Area Boundary
- Fungi Bounding Upper Hayfork Creek 5th HUC
- Weed Bounding
- Highway
- Road\_Route



M. Arnold  
3/11/08

File path: fs:\files\office\sfmu\uphfk\010 Gemmill GIS Files\Bounding  
Maps\_MArnold